



Not all models are available in all countries.

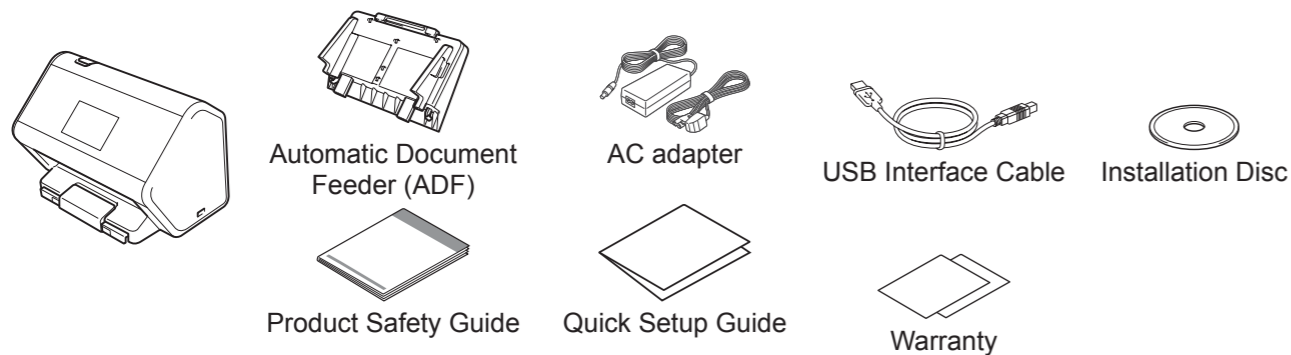
The latest manuals are available from the Brother Solutions Center: support.brother.com

Please read the **Product Safety Guide** before you set up your machine.

WARNING WARNING indicates a potentially hazardous situation which, if not avoided, could result in death or serious injuries.

NOTE Unless otherwise specified, illustrations in this guide show the ADS-3600W.

1 Unpack the machine and check the components



WARNING

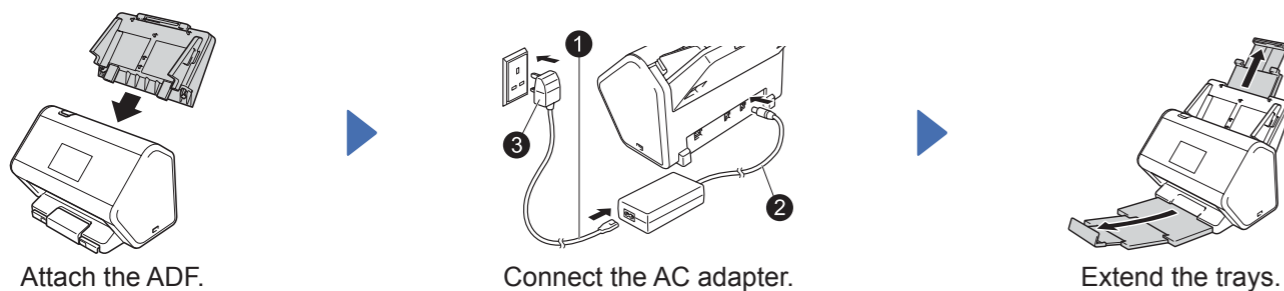
- This product is packaged in a plastic bag. To avoid suffocation, keep plastic bags away from babies and children. The bag is not a toy.
- Use only the AC adapter supplied with this product.

NOTE

- We recommend saving the original packaging in case you must ship your machine.
- Use the supplied USB cable to connect the machine to a computer.

Secure Network Access
Your machine's default password is on the label on the back of the scanner (preceded by "Pwd"). We strongly recommend you change it to protect your machine from unauthorised access.

2 Prepare your machine



3 Select your language, if needed (Touchscreen models only)

- On the machine's Touchscreen, press
- Press or and select Initial Setup.
- Press Local Language.
- Press or and select your language.
- Press .

4 Connect your machine and install software

Select your preferred scanning method.
If you are using ADS-2400N or ADS-3000N, you cannot connect to the network through Wi-Fi.

Using your scanner with your computer

Wi-Fi connection to Network

LAN cable to Network

USB cable to computer

Using your scanner with your mobile device

Wi-Fi connection to Network

- A computer with a network connection **A**
- A computer without a network connection **B**

LAN cable to Network

C

Using your scanner as a stand-alone device

Wi-Fi connection to Network

- A computer with a network connection **A**
- A computer without a network connection **B**

LAN cable to Network

D

A Using your scanner with your computer

Windows® computer with CD drive

NOTE:
If the Brother screen does not appear automatically, click **(Start) > Computer (My Computer)**. (For Windows® 8 and 8.1: click the (File Explorer) icon on the taskbar, and then go to **This Computer**.) Double-click the CD icon, and then double-click **start.exe**.

Macintosh and Windows® computer without CD drive
Download the full driver and software package from the Brother Solutions Center support.brother.com

Follow the on-screen instructions to continue installation. **Finish**
NOTE: When finished, restart your computer.

B Using your scanner with your mobile device or as a stand-alone device (Wi-Fi connection to network)

1. **WiFi** > Setup Wizard > Yes.
2. Select the SSID. Enter the Network key.
3. The LCD displays Connected.

If you are using your scanner with your mobile device

If you are using your scanner as a stand-alone device

Download "Brother iPrint&Scan" to start using your machine with mobile devices. Go to support.brother.com/ips and select your product and mobile device to download "Brother iPrint&Scan".

Finish

NOTE
If you cannot find the SSID, ask your network administrator or wireless access point/router manufacturer.

C Using your scanner with your mobile device (LAN cable to Network)

Connect your machine to your Network using a LAN cable.

Download "Brother iPrint&Scan" to start using your machine with mobile devices. Go to support.brother.com/ips and select your product and mobile device to download "Brother iPrint&Scan".

Finish

D Using your scanner as a stand-alone device (LAN cable to Network)

Connect a LAN cable to your machine.

NOTE
If you cannot connect to the network, confirm the LAN settings and enable LAN.
ADS-2400N/3000N: Open the front cover. Press and hold and for about five seconds until the machine beeps.
ADS-2800W/3600W: Press , Network, Wired LAN, Wired Enable, and then On.

Finish