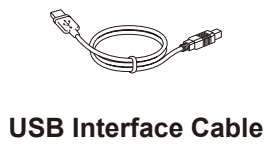
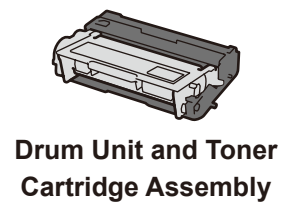
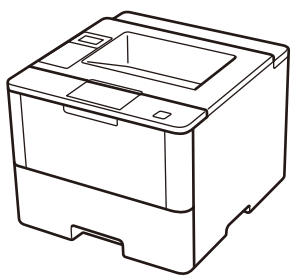


Unpack the machine and check the components



NOTE:

- The available connection interfaces vary depending on the model.
- Use the appropriate interface cable for the connection you want to use. (Network cable and Parallel cable are not standard accessories.)

USB cable

We recommend using a USB 2.0 cable (Type A/B) that is no more than 2 metres long.

Network cable

(For HL-5590DN / HL-5595DN)

Please purchase a straight-through Category 5 (or greater) twisted-pair cable for the machine.

Parallel cable

(For HL-5580D)

Please purchase the optional parallel cable (PC-5000) for the machine.

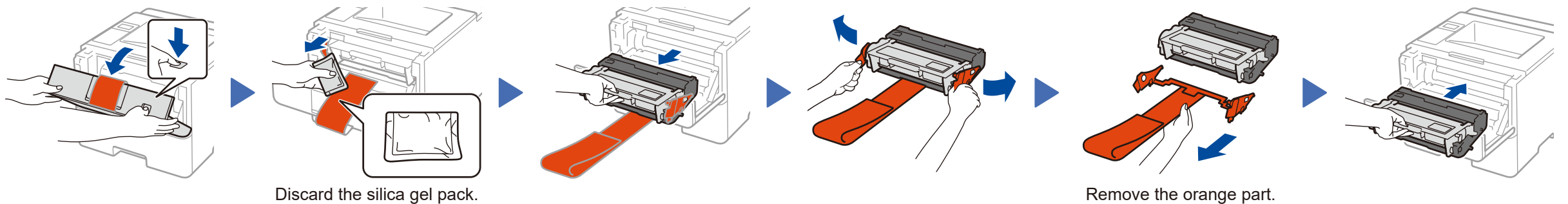
- The illustrations in this Quick Setup Guide show the HL-5595DN.

Secure Network Access

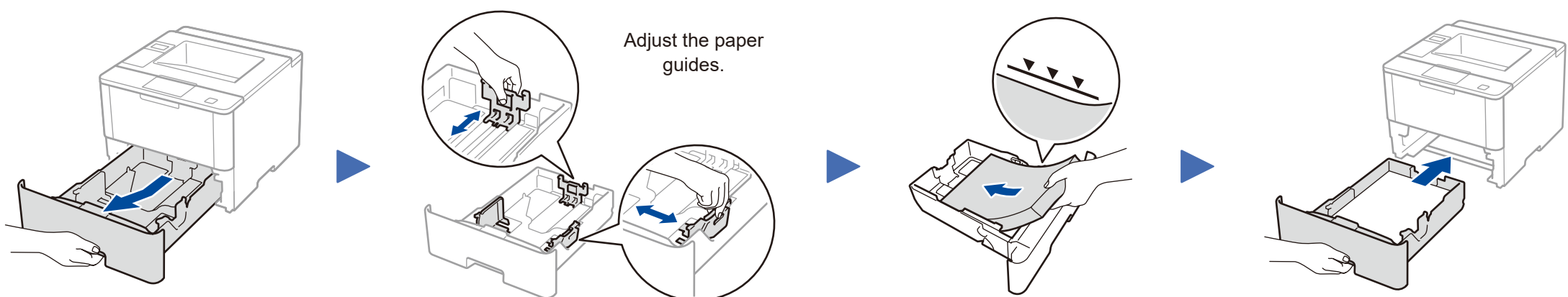
Your machine's default password is on the label on the back of the machine (preceded by "Pwd").

We strongly recommend you change it to protect your machine from unauthorised access.

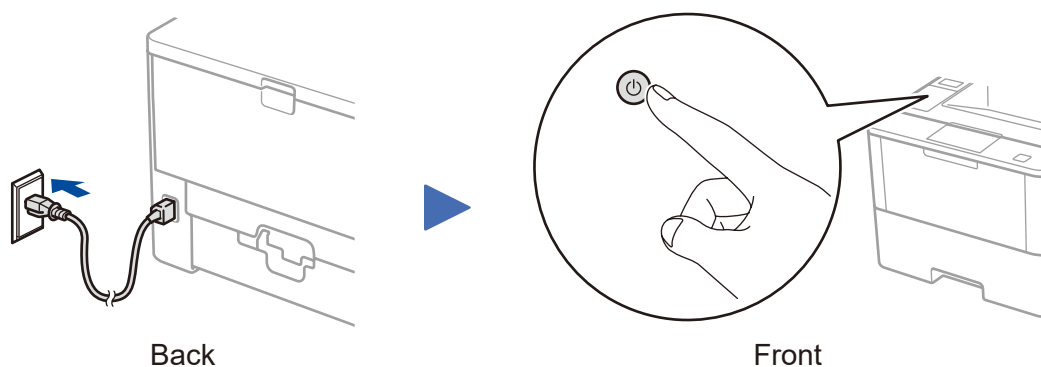
1 Remove the packing materials and install the drum unit and toner cartridge assembly



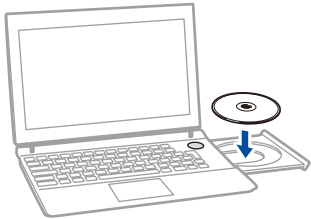
2 Load paper in the paper tray



3 Connect the power cord and turn the machine on



Windows® computer with CD-ROM drive

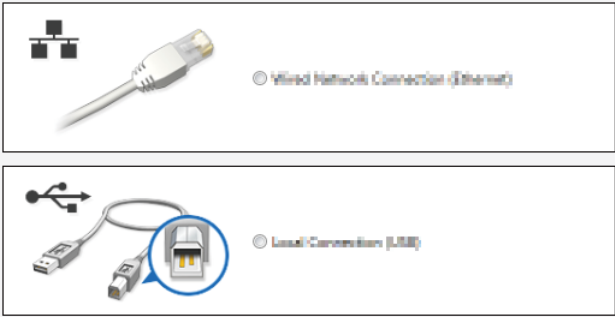


NOTE:
If the Brother screen does not appear automatically, click **(Start) > Computer (My Computer)**.
(For Windows® 8: click the **(File Explorer)** icon on the taskbar, and then go to **Computer (This PC)**.)
Double-click the CD-ROM icon, and then double-click **start.exe**.

- For HL-5580D / HL-5585D
(The Parallel connection is only for HL-5580D)



- For HL-5590DN / HL-5595DN
Choose your Connection Type:



Macintosh/Windows® computer without CD-ROM drive



Download the full driver and software package from the Brother Solutions Center.
(Macintosh) solutions.brother.com/mac
(Windows®) solutions.brother.com/windows

Follow the on-screen instructions to continue installation.

Finish

NOTE:
If connection is unsuccessful, repeat this step.

