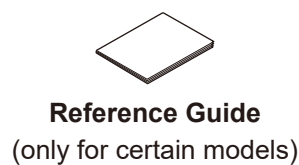
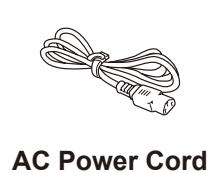
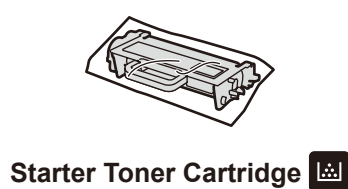
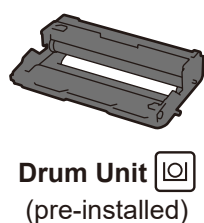
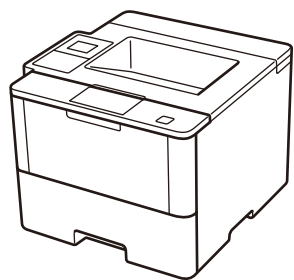




## Unpack the machine and check the components



Watch our Video FAQs for help with setting up your Brother machine:  
[solutions.brother.com/videos](http://solutions.brother.com/videos).

### NOTE:

- Manuals in Spanish for this model are available on the Brother Solutions Center. (USA only): [solutions.brother.com/manuals](http://solutions.brother.com/manuals)  
Los manuales en español de este modelo están disponibles en el Brother Solutions Center. (Solamente en los Estados Unidos): [solutions.brother.com/manuals](http://solutions.brother.com/manuals)
- You must purchase the correct interface cable for the interface you want to use.

### USB cable

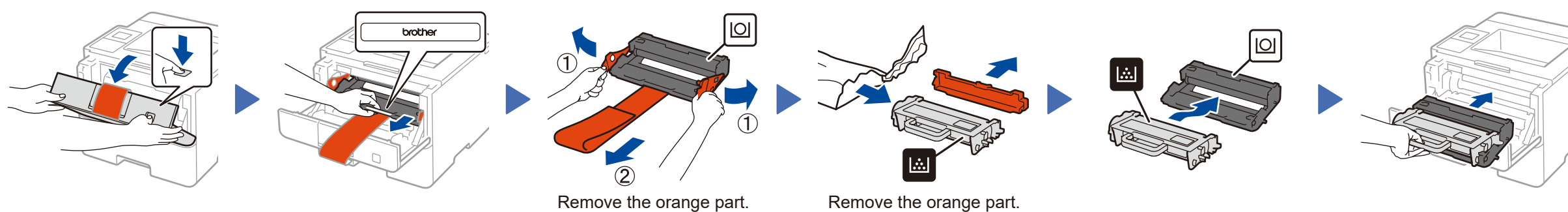
We recommend using a USB 2.0 cable (Type A/B) that is no more than 6 feet (2 meters) long.

### Network cable

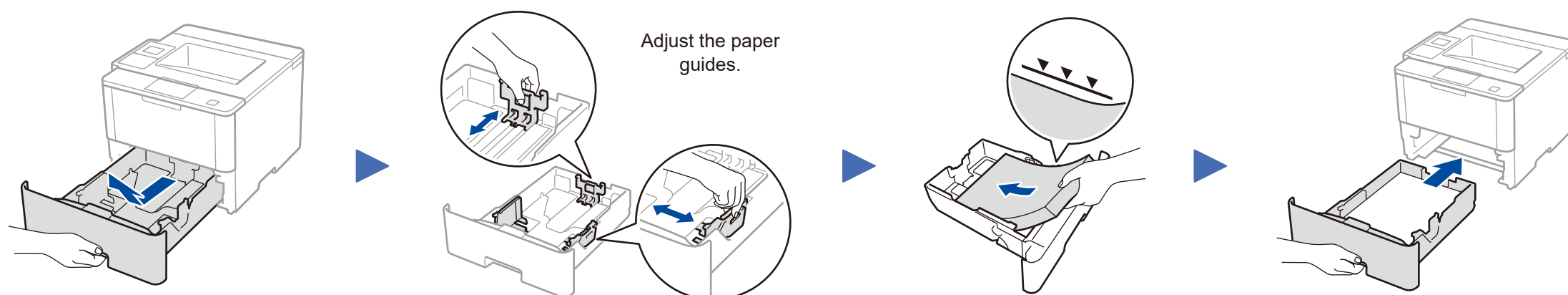
Use a straight-through Category 5 (or greater) twisted-pair cable.

- The illustrations in this Quick Setup Guide show the HL-L6400DW.

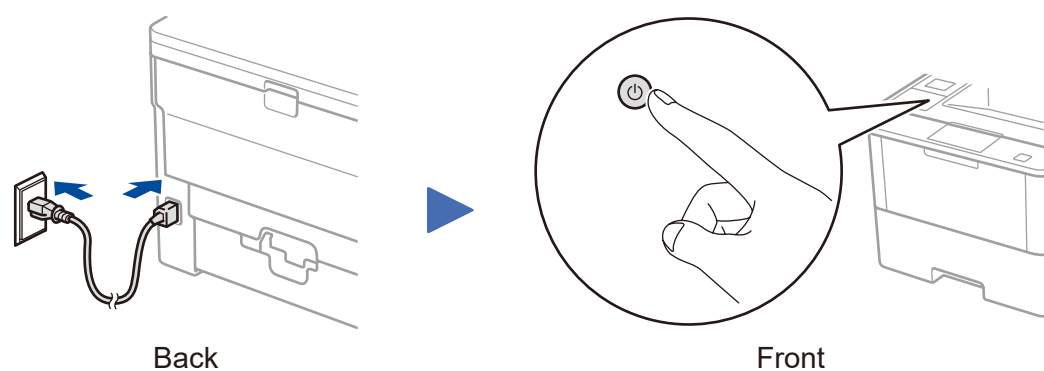
## 1 Remove the packing materials and install the drum unit and toner cartridge assembly



## 2 Load paper in the paper tray

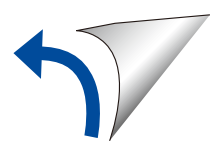
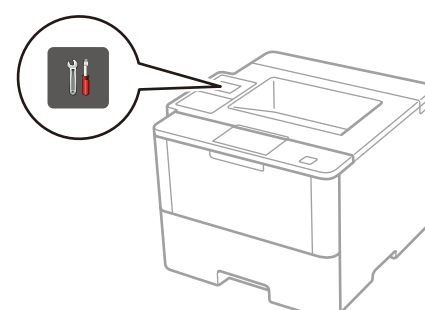


## 3 Connect the power cord and turn on the machine



## 4 Select your language (if needed)

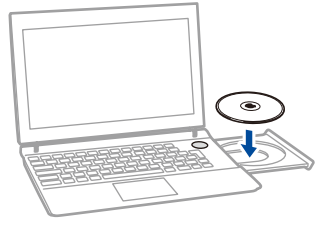
- On the machine's Touchscreen, press [Settings] > [General Setup] > [Local Language].
- Press your language.
- Press .



## 5 Connect your machine and install software

Brother regularly updates firmware to add features and fix identified problems. To check for the latest firmware, visit [solutions.brother.com/up1](http://solutions.brother.com/up1).

### Windows® computer with CD-ROM drive



#### NOTE:

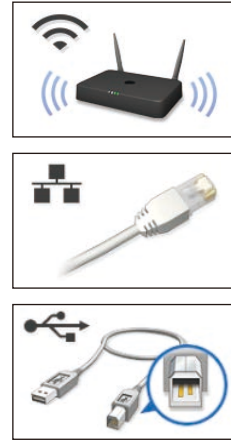
If the Brother screen does not appear automatically, click **(Start) > Computer (My Computer)**. (For Windows® 8: click the **(File Explorer)** icon on the taskbar, and then go to **Computer (This PC)**.) Double-click the CD-ROM icon, and then double-click **start.exe**.

### Macintosh/Windows® computer without CD-ROM drive



Download the full driver and software package from the Brother Solutions Center.  
(Macintosh) [solutions.brother.com/mac](http://solutions.brother.com/mac)  
(Windows®) [solutions.brother.com/windows](http://solutions.brother.com/windows)

Choose your Connection Type:



Follow the on-screen instructions to continue installation.

Follow the on-screen instructions to continue installation.

Finish

If using a wireless network connection:  
When the **Wireless Device Setup** screen appears, select **Setup without a USB cable (Recommended)**.



When instructed, go to your machine's LCD.

a. Press the **WiFi** icon on the LCD.



b. Press [WLAN Assistant].

Follow the on-screen instructions to continue installation.

Finish

#### NOTE:

- When finished, restart your computer.
- If connection is unsuccessful, see **? Cannot set up your machine?** below.

#### NOTE:

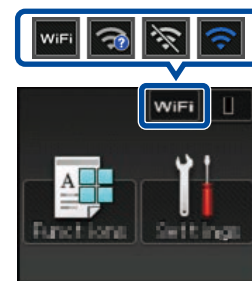
If the LCD screen is blank, press **[Wake Up]** to wake up the device.

## WiFi Alternate wireless configuration method (Setup Wizard)

Restart your wireless access point/router.



Find your  
SSID: XXXXXXXX  
Network key: XXXX



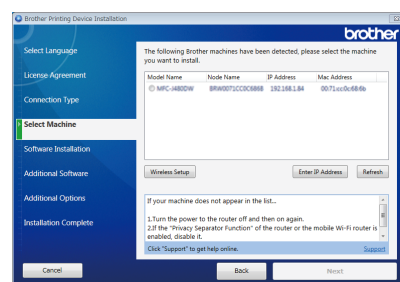
Press **WiFi** > [Setup Wizard] > [Yes].

Select the SSID.  
Enter the Network key.

The LCD displays  
[Connected.].

If you cannot find this information, ask your network administrator or wireless access point/router manufacturer.

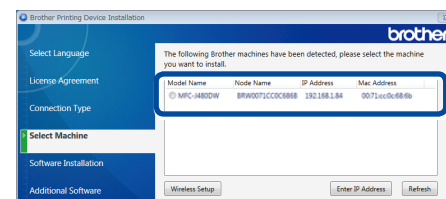
To use with your computer, follow Step 5 until the **Select Machine** screen appears, listing all machines in your network.



Select your machine.

Follow the on-screen instructions to continue installation.

Finish



#### NOTE:

- When finished, restart your computer.
- If connection is unsuccessful, see **? Cannot set up your machine?** below.

#### For Network Users: Important Notice for Network Security

The default Web Based Management password is located on the back of the machine and marked "Pwd". We recommend immediately changing the default password to use network tools/utilities securely and to protect your machine from unauthorized access.

## Print using your mobile device

Before printing from your mobile device, your machine must be configured according to step 5 or **WiFi Alternate wireless configuration method (Setup Wizard)**.



Download "Brother iPrint&Scan" to start using your machine with mobile devices.

[solutions.brother.com/ips](http://solutions.brother.com/ips)



AirPrint is available for OS X and iOS users. For more information, see the **AirPrint Guide** on your model's **Manuals** web page.  
[solutions.brother.com/manuals](http://solutions.brother.com/manuals)

## ? Cannot set up your machine?



Wired network



USB



Wireless network

Disconnect the cable.

Restart your machine,  
computer and/or mobile  
device.

Repeat 5.

Go to **WiFi Alternate wireless configuration method (Setup Wizard)**.

#### NOTE:

If you repeat these steps and connection is still unsuccessful, please visit the Brother Solutions Center at: <http://support.brother.com>.



Brother support website <http://support.brother.com>