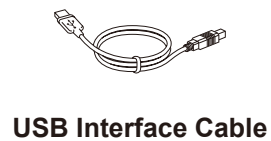
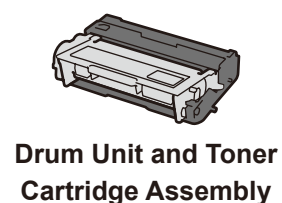


Unpack the machine and check the components



NOTE:

- Use the appropriate interface cable for the connection you want to use. (Network cable is not a standard accessory.)

USB cable

We recommend using a USB 2.0 cable (Type A/B) that is no more than 2 metres long.

Network cable

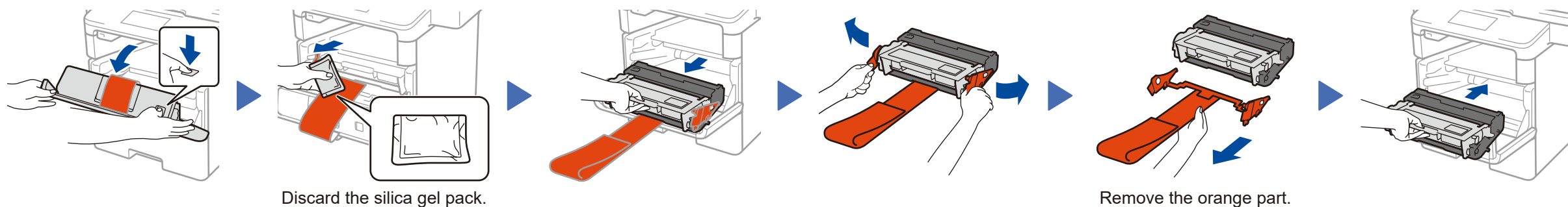
Please purchase a straight-through Category 5 (or greater) twisted-pair cable for the machine.

- The illustrations in this Quick Setup Guide show the MFC-8540DN.

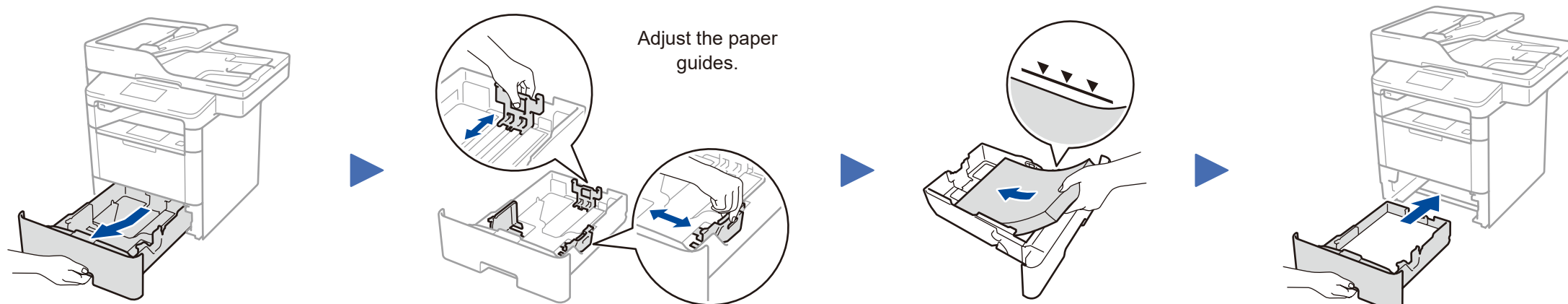
Secure Network Access

Your machine's default password is on the label on the back of the machine (preceded by "Pwd"). We strongly recommend you change it to protect your machine from unauthorised access.

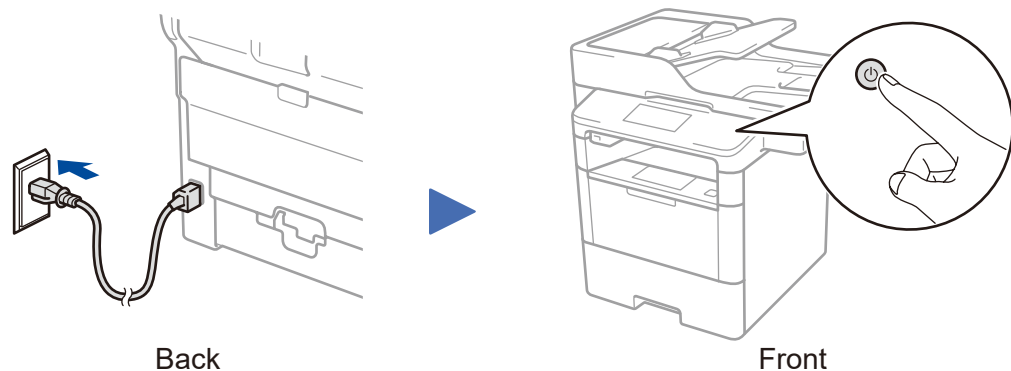
1 Remove the packing materials and install the drum unit and toner cartridge assembly



2 Load paper in the paper tray

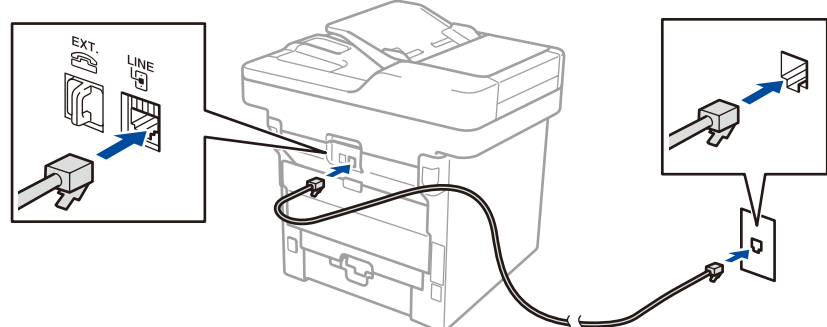


3 Connect the power cord and turn the machine on



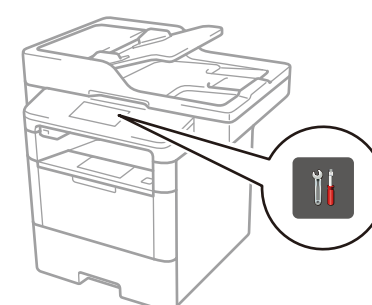
4 Connect the telephone line cord

If you do not plan to use the fax feature on this machine, go to step 5.



5 Select your language (if needed)

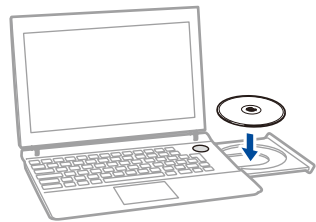
- On the machine's Touchscreen, press [设置] (Settings) > [所有设置] (All Settings) > [初始设置] (Initial Setup) > [语言] (Local Language).
- Press your language.
- Press .



6 Connect your machine and install software

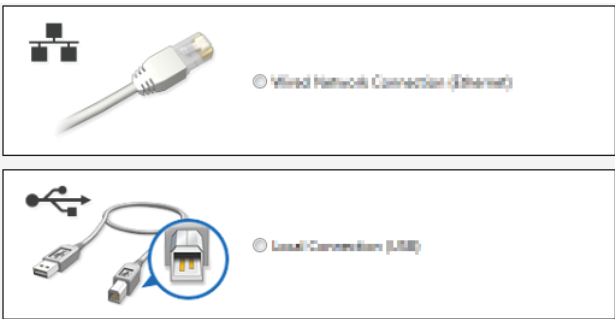
Brother regularly updates firmware to add features and fix identified problems. To check for the latest firmware, visit solutions.brother.com/up1.

Windows® computer with CD-ROM drive



NOTE:
If the Brother screen does not appear automatically, click **(Start) > Computer (My Computer)**.
(For Windows® 8: click the **(File Explorer)** icon on the taskbar, and then go to **Computer (This PC)**.)
Double-click the CD-ROM icon, and then double-click **start.exe**.

Choose your Connection Type:



Macintosh/Windows® computer without CD-ROM drive



Download the full driver and software package from the Brother Solutions Center.
(Macintosh) solutions.brother.com/mac
(Windows®) solutions.brother.com/windows

Follow the on-screen instructions to continue installation.

Finish

NOTE:
If connection is unsuccessful, repeat this step.

