

Three overlapping circles in shades of blue are positioned on the left side of the page, behind the title. The circles are of increasing size from left to right, with the largest circle being a light blue and the two smaller ones being a darker blue.

Product Safety Guide

MFC-J2330DW/J2730DW/J3530DW/J3930DW

Brother Industries, Ltd.

15-1, Naeshiro-cho, Mizuho-ku, Nagoya 467-8561, Japan

Please read this booklet before attempting to operate the product, or before attempting any maintenance. Failure to follow these instructions may result in an increased risk of fire, electrical shock, burns or suffocation. Brother shall not be liable for damage caused where the product owner has failed to follow instructions set out in this guide.

How to use this guide:

- 1 Read the whole guide before using your product and keep it for later reference. Please keep these instructions for later reference.
- 2 Carefully follow the instructions set out in this guide and always ensure that you follow all warnings and instructions marked on the product.
- 3 If you have concerns about how to use your product after reading this guide, please contact Brother customer service or your local Brother dealer.
- 4 To ensure you understand all of the instructions, study the Symbols and Conventions used in the documentation.

Symbols and conventions used in the documentation

The following symbols and conventions are used throughout the documentation.
Follow all warnings and instructions marked on the product.

WARNING

WARNING indicates a potentially hazardous situation which, if not avoided, could result in death or serious injuries.

CAUTION






CAUTION indicates a potentially hazardous situation which, if not avoided, may result in minor or moderate injuries.

IMPORTANT

IMPORTANT indicates a potentially hazardous situation which, if not avoided, may result in damage to property or loss of product functionality.

NOTE

NOTE specifies the operating environment, conditions for installation, or special conditions of use.

-  Prohibition icons indicate actions that must not be performed.
-  This icon indicates that flammable sprays must not be used.
-  This icon indicates that organic solvents such as alcohol and liquids must not be used.
-  Electrical Hazard icons alert you to possible electrical shocks.
-  Fire Hazard icons alert you to the possibility of a fire.

- Bold** Bold typeface identifies specific keys on the product's control panel or on the computer screen.
- Italics* Italicized typeface emphasizes an important point or refers you to a related topic.
- `Courier New` Text in the Courier New font identifies messages on the LCD of the product.

NOTE

The illustrations in this guide show the MFC-J3930DW.

Table of Contents

Compilation and Publication Notice	4
Choose a safe location for your product	4
General precautions	6
Connecting the product safely	11
Servicing the product	14
Important Safety Instructions	15
Product Warranty & Liability	16
Trademarks	18
Open Source Licensing Remarks	18
Copyright and License	18
Other Information	19
Brother Customer Service	19
Unlawful use of copying equipment	19

Compilation and Publication Notice

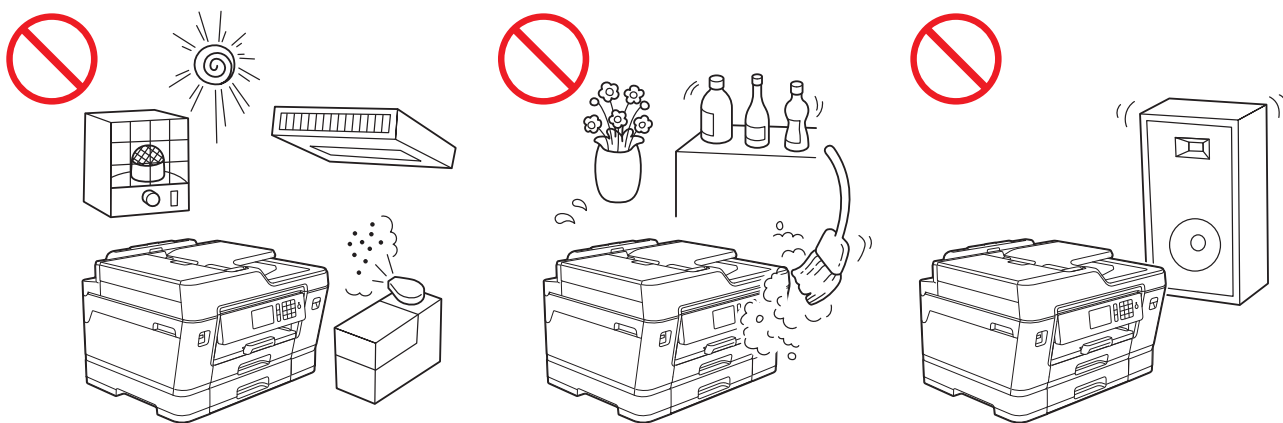
This product's manuals have been compiled and published to provide the latest product safety information at the time of publication. The information contained in the manuals may be subject to change.

For the latest manuals, please visit us at support.brother.com.

Use only GENUINE brother supplies

Brother multifunction products are designed to work ink of a particular specification and work to a level of optimum performance when used with genuine Brother ink cartridges. Brother cannot guarantee this optimum performance if ink or ink cartridges of other specifications are used. Brother does not therefore recommend the use of cartridges other than genuine Brother cartridges with this product or the refilling of empty cartridges with ink from other sources. If damage is caused to the print head or other parts of this product as a result of the use of ink or ink cartridges other than genuine Brother products due to the incompatibility or lack of suitability of those products with this product, any repairs required as a result will not be covered by the warranty.

Choose a safe location for your product



WARNING



Choose a location where the temperature remains between 10°C and 35°C and the humidity is between 20% to 80% (without condensation).



DO NOT expose the product to direct sunlight, excessive heat, open flames, corrosive gasses, moisture or dust.

Doing so may create a risk of an electrical shock, electrical short or fire. It may also damage the product and/or render it inoperable.



DO NOT place the product near chemicals or in a place where chemicals could be spilled on it. Should chemicals come into contact with the product, there may be a risk of fire or electrical shock. In particular, organic solvents or liquids such as benzene, paint thinner, polish remover, or deodoriser may melt or dissolve the plastic cover and/or cables, resulting in a risk of fire or electrical shock. These or other chemicals may also cause the product to malfunction or become discoloured.

CAUTION

Put your product on a flat, stable surface that is free from shocks and vibrations, such as a desk. Put the product near a telephone socket and a standard grounded electrical socket.

DO NOT place heavy objects on the product. DO NOT place this product on an unstable cart, stand, or table, particularly if children are expected to be near the product. The product is heavy and may fall, causing injury to you or others, and serious damage to the product. For the products with scanning functionality, there is an added risk of injury if the scanner glass should break.

Avoid placing your product in a high-traffic area. If you must place it in a high-traffic area, ensure that the product is in a safe location where it cannot be accidentally knocked-over, which could cause injury to you and serious damage to the product.

IMPORTANT

- DO NOT put objects on top of the product. Doing so could increase the risk of overheating should the product malfunction.
 - DO NOT place anything in front of the product that will block received faxes or printed pages. DO NOT place anything in the path of received faxes or printed pages.
 - DO NOT place your product next to sources of interference, such as speakers or the base units of non-Brother cordless telephones. Doing so may interfere with the operation of the product's electronic components.
 - DO NOT place the product on any tilted/slanted surface. DO NOT tip the product after the ink cartridges are installed. Doing so may cause ink spillage and internal damage to the product.
-

General precautions

WARNING

Plastic bags are used in the packing of your product. Plastic bags are not toys. To avoid the danger of suffocation, keep these bags away from babies and children and dispose of them correctly.

DO NOT use the product near any medical electrical equipment. The radio emissions from the product may affect medical electrical equipment and cause a malfunction, which may result in a medical accident.

For users with pacemakers:

This product generates a weak magnetic field. If you experience any unusual symptoms with your pacemaker while near the product, move away from the product and consult a doctor immediately.



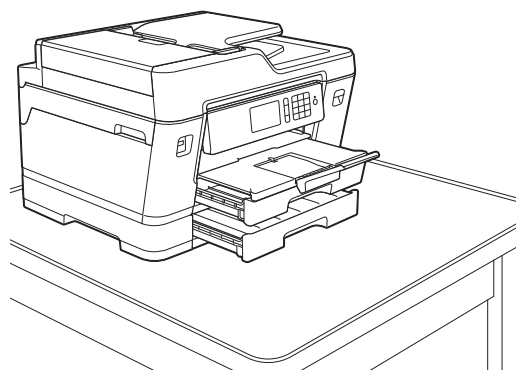
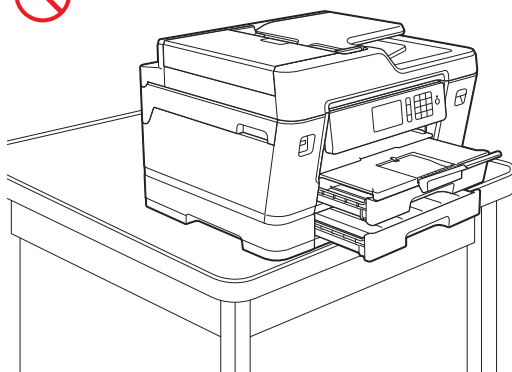
DO NOT use flammable substances, any type of spray, or an organic solvent/liquid containing alcohol or ammonia to clean the inside or outside of the product. Doing so could cause a fire or electrical shock. Instead, use only a dry, lint-free cloth. For instructions on how to clean the product, see the Online User's Guide.

CAUTION

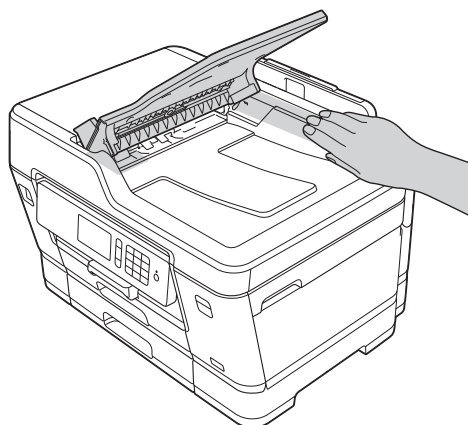
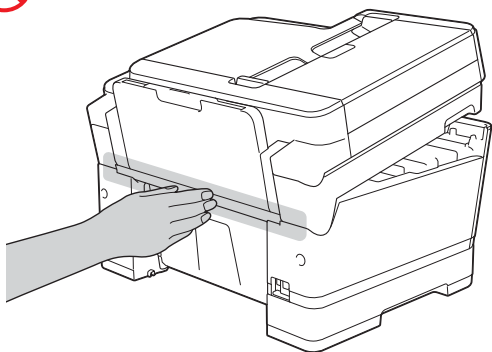
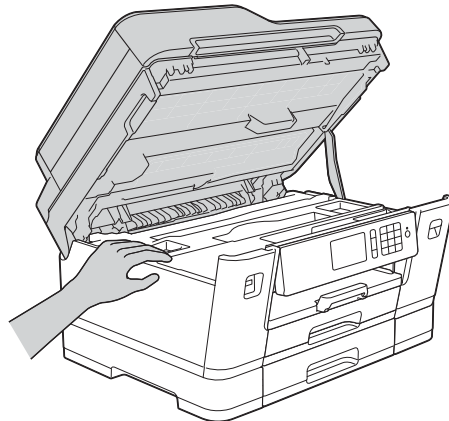
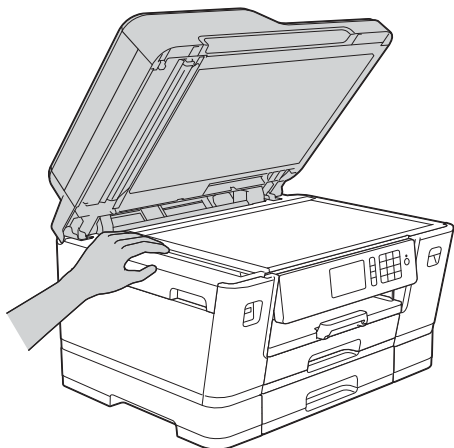
Wait until pages have exited the product before picking them up. Failure to do this may cause injury to your fingers by trapping them in a roller.

DO NOT put your hand or any foreign objects into the ink insertion slot. Doing this may cause injury.

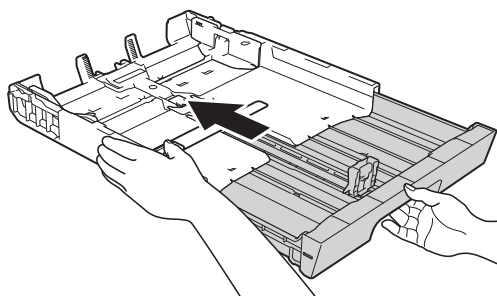
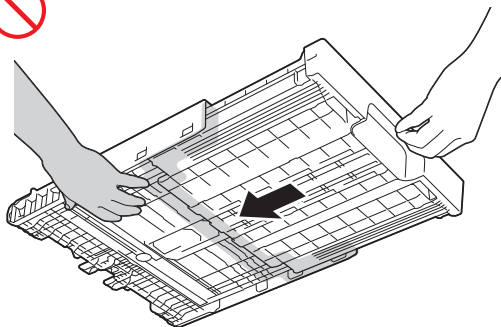
If the tray has been extended to hold large paper such as A3, Legal, Ledger or Folio size paper, position the product so that the tray does not protrude past the edge of the table or desk. If someone hits the tray, the product could fall and cause injury.



To prevent injuries, be careful not to put your fingers in the areas shown in the illustrations.

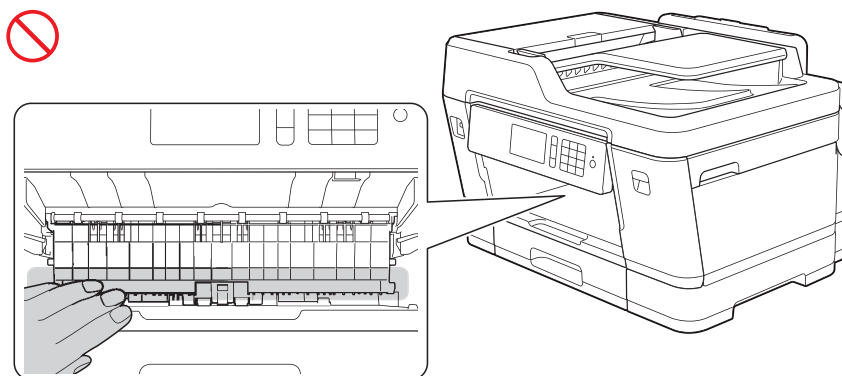


When adjusting the tray size from A3, Legal, Ledger or Folio to the original size, take care not to trap your fingers in the gaps or slots at the bottom of the tray.



(MFC-J3530DW/J3930DW)

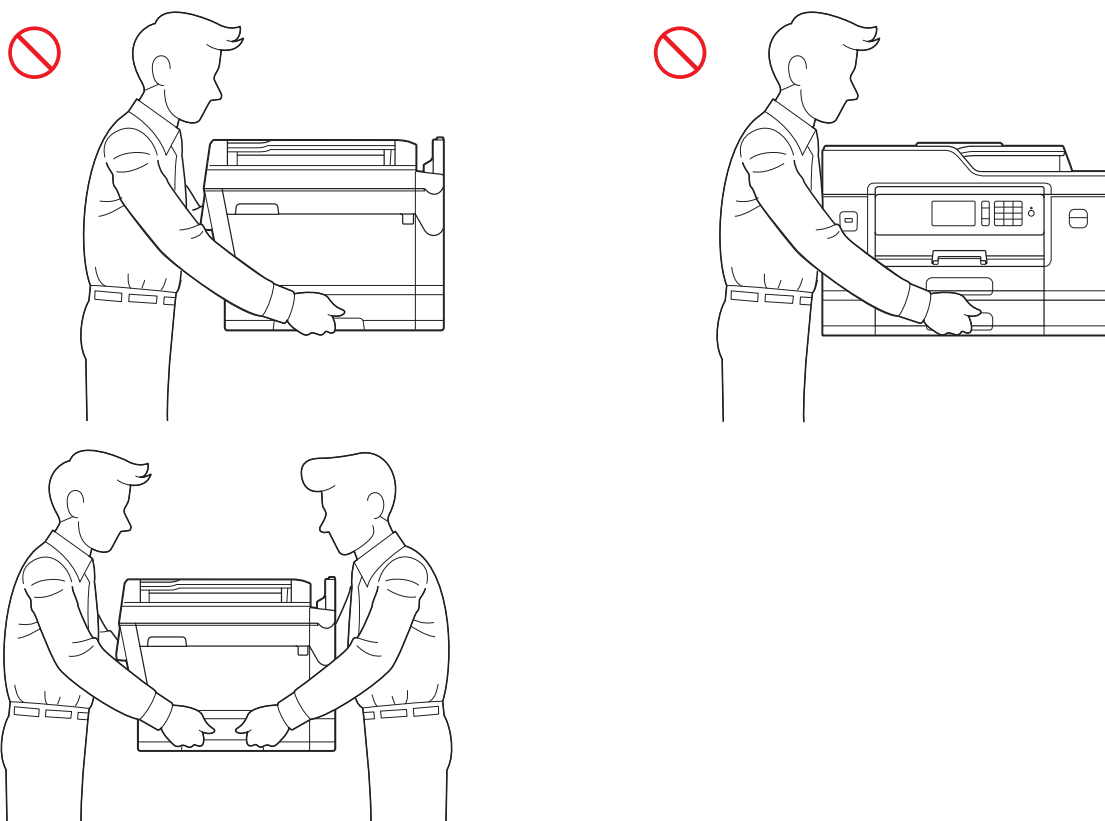
Be careful not to put your fingers in the areas shown in the illustrations. It may cause injury to you.



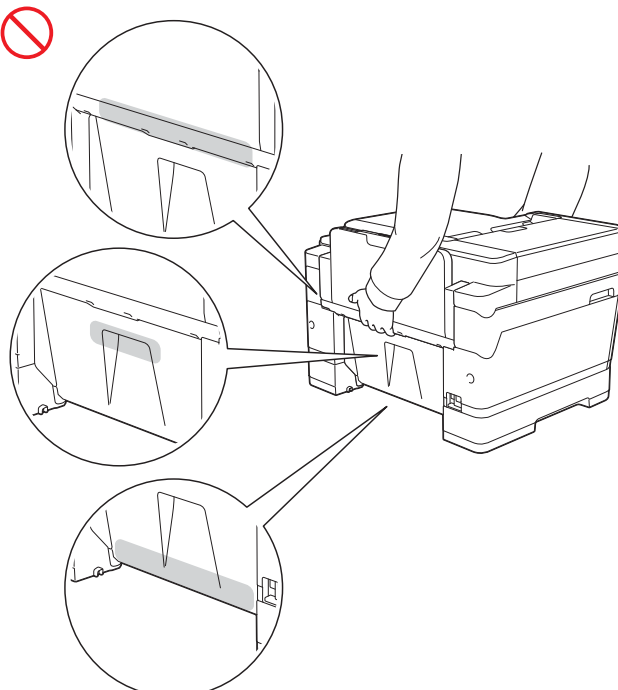
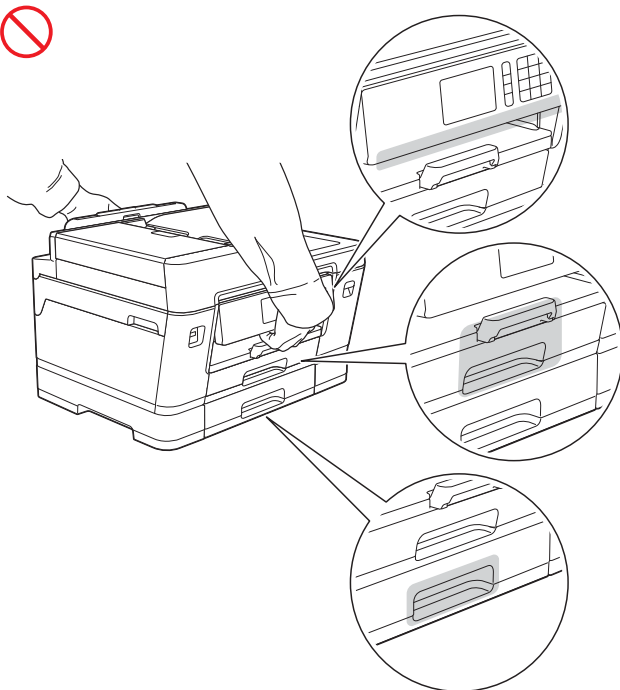
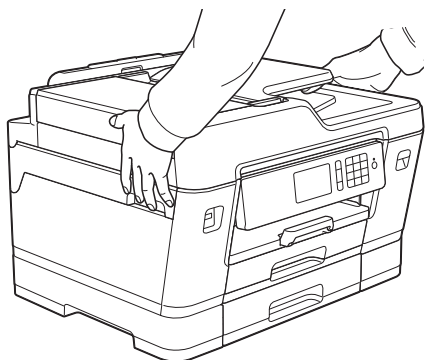
(MFC-J2730DW/J3530DW/J3930DW)

To prevent possible injuries, at least two people should lift the product. One person should hold the front of the product, and one person should hold the back, as shown in the illustration below. Carry the product by sliding your hands into the handhold indentations located on each side of the product. Be careful not to trap your fingers when you put the product down.

DO NOT carry the product by holding the lower tray when it is installed. The lower tray could fall and cause injury to you.

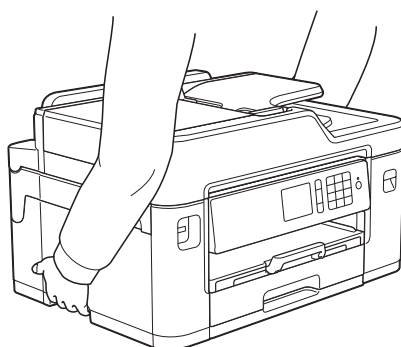


DO NOT carry the product by holding the areas shown in the illustrations. Doing this may cause the product to slip out of your hands and may result in injury.

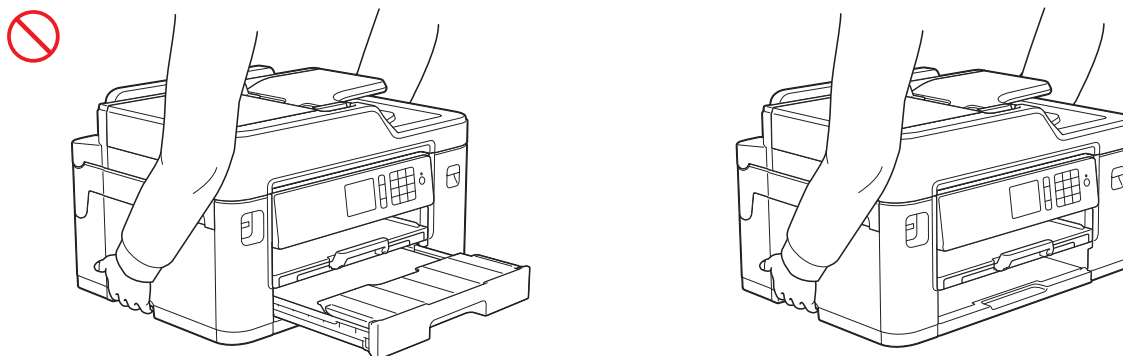


(MFC-J2330DW)

Carry the product by sliding your hands into the handhold indentations located on each side of the product.



When carrying the product, remove the trays if they have been expanded to hold large paper such as Ledger, A3, Legal or Folio size paper. The weight of the paper could cause the trays to fall and cause injury to you.



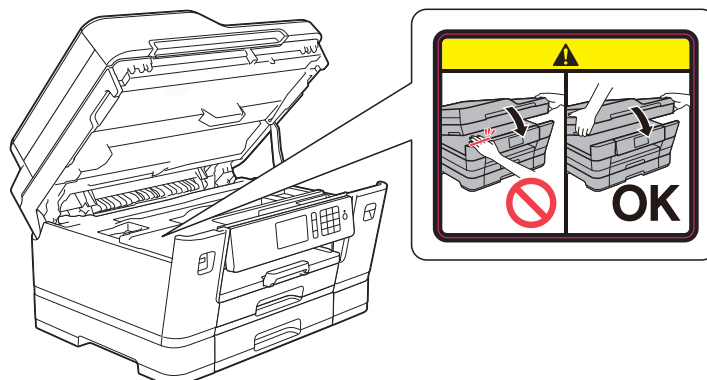
If ink comes into contact with your skin, or into your eyes or mouth, please follow these steps immediately:

- If ink is on your skin, wash it away with water and soap immediately.
 - If ink gets into your eyes, rinse them with water immediately. If left as it is, it may cause red eye or mild inflammation. In case of any abnormality, consult your doctor.
 - If ink gets into your mouth, spit it out and consult your doctor immediately.
-
- Be careful not to get ink in your eyes when replacing the ink cartridge.
 - Keep the ink cartridge out of the reach of children.
 - Avoid swallowing ink.
 - DO NOT shake the ink cartridge. The ink may leak out if the cartridge is shaken.
 - DO NOT dismantle the ink cartridge. The ink may get in your eyes, or on your skin.
-

DO NOT run your hand over the edge of the printer paper.
Sharp edges of the paper may cause an injury.

(MFC-J3530DW/J3930DW)

DO NOT remove or damage any of the caution or warning labels inside the product.



IMPORTANT

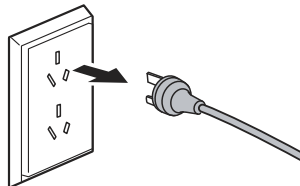
- Disruption of power can wipe out information in the product's memory.
 - DO NOT connect your product to an electrical socket on the same circuit as large appliances or other equipment that requires a significant amount of electricity to operate. Operating this product in conjunction with the other product(s) could create an overvoltage, tripping your circuit breaker or blowing your fuse.
 - We recommend that you only use our genuine ink cartridges.
Use of non-genuine ink may cause damage to the print head, and also result in variations in colours and print quality.
-

Connecting the product safely

WARNING



There are high-voltage electrodes inside the product. Before you access the inside of the product, including for routine maintenance such as cleaning, make sure you have unplugged the power cord from the electrical socket as well as any telephone (RJ-11) or Ethernet cables from the product.



DO NOT handle the plug with wet hands.



Always make sure the plug is fully inserted.



DO NOT allow the plug, power outlet or the product to become dusty.



DO NOT attempt to service this product yourself. Opening or removing covers may expose you to dangerous voltages and other risks, and may void your warranty. If you experience any problems with your product, contact Brother customer service or your local Brother dealer.



DO NOT allow any type of liquid to come into contact with the plug or power outlet.



If water, other liquids, or metal objects get inside the product, immediately unplug the product from the electrical socket, and contact Brother customer service or your local Brother dealer.



This product should be connected to an AC power source within the range indicated on the rating label. DO NOT connect it to a DC power source or inverter. If you are not sure what kind of power source you have, contact a qualified electrician.

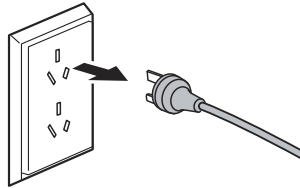


Power Cord Safety:

- DO NOT allow anything to rest on the power cord.
- DO NOT place this product where people can walk on the cord.
- DO NOT place this product in a position where the cord is stretched, or strain is otherwise put on the cord.
- Doing so may cause the cord to become worn or frayed.



This product is equipped with a 3-wire grounded plug. This plug will only fit into a grounded power outlet. This is a safety feature. If you are unable to insert the plug into the outlet, call your electrician to replace your obsolete outlet. DO NOT use the supplied grounded plug in any other outlet except those specified. Doing so may cause an electrical shock.



Use caution when installing or modifying telephone lines.

Never touch telephone wires or terminals that are not insulated unless the telephone line has been unplugged at the wall socket. Never install telephone wiring during a lightning storm. Never install a telephone wall socket in a wet location.



DO NOT use the product or handle the cord if the cord has become worn or frayed. If unplugging your product, DO NOT touch the damaged/frayed part.



DO NOT pull on the middle of the AC power cord. DO NOT allow anything to rest on the power cord. DO NOT place this product where people may step on the cord. Doing so may cause an electrical shock or fire.



Brother strongly recommends that you DO NOT use any type of extension cord.

⚠ CAUTION

When multiple devices, including this product, are connected to a computer using USB cables, you may feel an electric charge when you touch metal parts of the product.

Servicing the product

WARNING



If the product has been dropped or the casing has been damaged, there may be the possibility of an electrical shock. Unplug the product from the electrical socket and contact Brother customer service or your local Brother dealer.



If the product becomes unusually hot, releases smoke, generates any strong smells, or if you accidentally spill any liquid on it, immediately unplug the product from the electrical socket. Contact Brother customer service or your local Brother dealer.

IMPORTANT

If the product does not operate normally when the operating instructions are followed, adjust only those controls that are covered by the operating instructions. Incorrect adjustment of other controls may result in damage and will often require extensive work by a qualified technician to restore the product to normal operation.

Important Safety Instructions

- 1 Read all of these instructions.
- 2 Save them for later reference.
- 3 Follow all warnings and instructions marked on the product.
- 4 Unplug this product from the wall outlet before cleaning the outside of the product and the scanner glass. Do not use liquid or aerosol cleaners. Use a damp cloth for cleaning.
- 5 Do not place this product near water.
- 6 Do not place this product on an unstable cart, stand, or table. The product may drop, causing serious damage to the product.
- 7 Slots and openings in the cabinet and the back or bottom are provided for ventilation; to ensure reliable operation of the product and to protect it from overheating, these openings must not be blocked or covered. The openings should never be blocked by placing the product on a bed, sofa, rug, or other similar surface. This product should never be placed near or on a radiator or heater. This product should never be placed in a built-in installation unless proper ventilation is provided.
- 8 This product should be connected to an AC power source within the range indicated on the rating label. Do not connect it to a DC power source. If you are not sure, contact a qualified electrician.
- 9 This product is equipped with a 3-wire grounding type plug, a plug having three pins. This plug will only fit into a grounding-type power outlet. This is a safety feature. If you are unable to insert the plug into the outlet, contact your electrician to replace your obsolete outlet. Do not defeat the purpose of the grounding-type plug.
- 10 Do not place anything on top of the power cord including this product. Do not allow the power cord to be stepped on.
- 11 If an extension cord is used with this product, make sure that the total ampere ratings on the products plugged into the extension cord do not exceed the extension cord ampere rating.
- 12 Do not place anything in front of the product that will block printouts. Do not place anything in the path of received faxes.
- 13 Do not touch a document during printing.
- 14 Never push objects of any kind into this product through cabinet slots, since they may touch dangerous voltage points or short out parts resulting in the risk of fire or electric shock. Never spill liquid of any kind on the product.
- 15 Do not attempt to service this product yourself. Opening or removing covers may expose you to dangerous voltage points and/or other risks, and may void your warranty. Please refer all servicing to our Authorized Service Personnel. A list of Authorized Service Centres has been included for your convenience, or you may contact the Brother Dealer for Service.

16 Unplug this product from the wall outlet and refer servicing to Authorized Service Personnel under the following conditions:

- If the power cord is damaged or frayed.
- If the product has been spilled by liquid.
- If the product has been exposed to rain or water.
- If the product does not operate normally when the operating instructions are followed. Adjust only those controls that are covered by the operating instructions. Improper adjustment of other controls may result in damage and will often require extensive work by a qualified technician to restore the product to normal operation.
- If the product has been dropped or the cabinet has been damaged.
- If the product exhibits a distinct change in performance, indicating a need for service.

Product Warranty & Liability

Nothing in this guide shall affect any existing product warranty or be construed as granting any additional product warranty. Failure to follow the safety instructions in this guide may invalidate your product's warranty.

WARNING

DO NOT allow this product to come into contact with water. This product should not be used around standing water, including a bath tub, sink, or swimming pool; around appliances containing water, including a refrigerator; or in a wet basement.

Avoid using this product during an electrical storm. There may be a remote risk of electrical shock from lightning.

DO NOT use this product to report a gas leak in the vicinity of the leak.

Only use the power cord supplied with this product.

CAUTION

This product must be installed near an electrical socket that is easily accessible. In case of an emergency, you must unplug the power cord from the electrical socket to shut off the power completely.

Approval Information

THIS EQUIPMENT IS DESIGNED TO WORK WITH A TWO WIRE ANALOGUE PSTN LINE FITTED WITH THE APPROPRIATE CONNECTOR.

Brother advises that this product may not function correctly in a country other than where it was originally purchased, and does not offer any warranty in the event that this product is used on public telecommunication lines in another country.

Notes on Using the Wireless Network Models

- 1 For Wireless LAN Function of the Equipment
 - Operating frequency: 2.4 - 2.4835 GHz
 - Equivalent isotropic radiated power (EIRP): ≤ 100 mW
 - Maximum power spectral density: ≤ 10 dBm / MHz (EIRP)
 - Carrier frequency tolerance: 20 ppm
 - Out-of-band emission power (Outside the 2.4 to 2.4835 GHz frequency band)
 ≤ -80 dBm / Hz (EIRP)
 - Spurious emission (radiation) power (Outside the range of the corresponding carrier ± 2.5 times the channel bandwidth):
 - ≤ -36 dBm / 100 kHz (30 - 1000 MHz)
 - ≤ -33 dBm / 100 kHz (2.4 - 2.4835 GHz)
 - ≤ -40 dBm / 1 MHz (3.4 - 3.53 GHz)
 - ≤ -40 dBm / 1 MHz (5.725 - 5.85 GHz)
 - ≤ -30 dBm / 1 MHz (1 - 12.75 GHz for others)
- 2 For NFC function of the Equipment
 - Operating frequency: 13.553 - 13.567 MHz
 - The magnetic field strength of emission at the distance of 10 meters away from the equipment shall not exceed 42 dB μ A/m (based on quasi-peak detection mode);
 - Frequency tolerance: $\leq 100 \times 10^{-6}$
 - Spurious radiation: For the equipment within the 13.553-13.567 MHz frequency band, the offset threshold from the 140 kHz frequency range at the both ends of the frequency band is 9 dB μ A/m (at 10 meters away, quasi-peak).
- 3 Do not, without appropriate permission, attempt to alter the emission frequency or increase the emission power (including by installing an additional RF power amplifier), or connect any external antenna or use any unspecified transmitting antenna.
- 4 This equipment must not cause harmful interference to other radio services. In case such interference occurred, the equipment must be stopped immediately and cannot be used until the appropriate measures are taken to eliminate the harmful interference.
- 5 This micro-power wireless equipment must accept any interference caused by the legal operation of other radio services or radiated interference received from the industrial, scientific and medical appliances.
- 6 DO NOT use this equipment anywhere near the plane or airport.

LAN connection (Models with Wired LAN function only)

CAUTION

DO NOT connect this product to a LAN connection that is subject to over-voltages.

Trademarks

Windows and Windows Vista are either registered trademarks or trademarks of Microsoft Corporation in the United States and/or other countries.

Apple, Macintosh and Mac are trademarks of Apple Inc., registered in the United States and other countries.

Wi-Fi® is a registered trademark of Wi-Fi Alliance®.

Wi-Fi Protected Setup™ is a trademark of Wi-Fi Alliance®.

Android is a trademark of Google, Inc. Use of this trademark is subject to Google Permissions.

magicJack® is a registered trademark of magicJack VocalTec Ltd.

Each company whose software title is mentioned in this manual has a Software License Agreement specific to its proprietary programs.

Any trade names and product names of companies appearing on Brother products, related documents and any other materials are all trademarks or registered trademarks of those respective companies.

Open Source Licensing Remarks

This product includes open-source software.

To see the open source licensing remarks, please go to the manual download selection of your model's home page on Brother Solutions Center at support.brother.com.

Copyright and License

©2016 Brother Industries, Ltd. All rights reserved.

This product includes software developed by the following vendors:

©1983-1998 PACIFIC SOFTWARES, INC. ALL RIGHTS RESERVED.

©2008 Devicescape Software, Inc. All rights reserved.

This product includes the "KASAGO TCP/IP" software developed by ZUKEN ELMIC, Inc.

Other Information

FlashFX® is a registered trademark of Datalight, Inc.

FlashFX® Copyright 1998-2014 Datalight, Inc.

U.S. Patent Office 5,860,082/6,260,156

FlashFX® Pro™ is a trademark of Datalight, Inc.

FlashFX® Tera™ is a trademark of Datalight, Inc.

Reliance™ is a trademark of Datalight, Inc.

Reliance Nitro™ is a trademark of Datalight, Inc.

Datalight® is a registered trademark of Datalight, Inc.

Copyright 1989-2014 Datalight, Inc., All Rights Reserved

Brother Customer Service

Customer Service

Visit www.brother.com for contact information for your local Brother office.

Service centre locations

For service centres in your country, contact your local Brother Office. Address and telephone contact information for local offices can be found at www.brother.com by selecting your country.

Unlawful use of copying equipment

It is an offence to make reproductions of certain items or documents with the intent to commit fraud. The following is a non-exhaustive list of documents which it may be unlawful to produce copies of. We suggest you check with your legal adviser and/or the relevant legal authorities if in doubt about a particular item or document:

- Currency
- Bonds or other certificates of debt
- Certificates of deposit
- Armed forces service or draft papers
- Passports
- Postage stamps (cancelled or uncanceled)
- Immigration papers
- Welfare documents
- Cheques or drafts drawn by governmental agencies
- Identifying badges or insignias

In addition, driving licenses and/or Certificates of Title to motor vehicles may not be copied under certain national laws.

Copyrighted works cannot be copied lawfully, subject to the “fair dealing” exception relating to sections of a copyrighted work. Multiple copies would indicate improper use. Works of art should be considered the equivalent of copyrighted works.

brother



www.brotherearth.com

CHN-ENG
Version 0