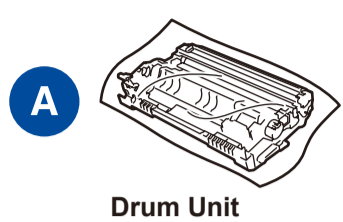


Unpack the machine and check the components



NOTE:

- The available connection interfaces vary depending on the model.
- Use the appropriate interface cable for the connection you want to use. (Network cable is not a standard accessory.)

USB cable

We recommend using a USB 2.0 cable (Type A/B) that is no more than 2 metres long.

Network cable

Use a straight-through Category 5 (or greater) twisted-pair cable.

- The illustrations in this *Quick Setup Guide* show the MFC-B7720DN.

Secure Network Access

Your machine's default password is on the label on the back of the machine (preceded by "Pwd"). We strongly recommend you change it to protect your machine from unauthorised access.

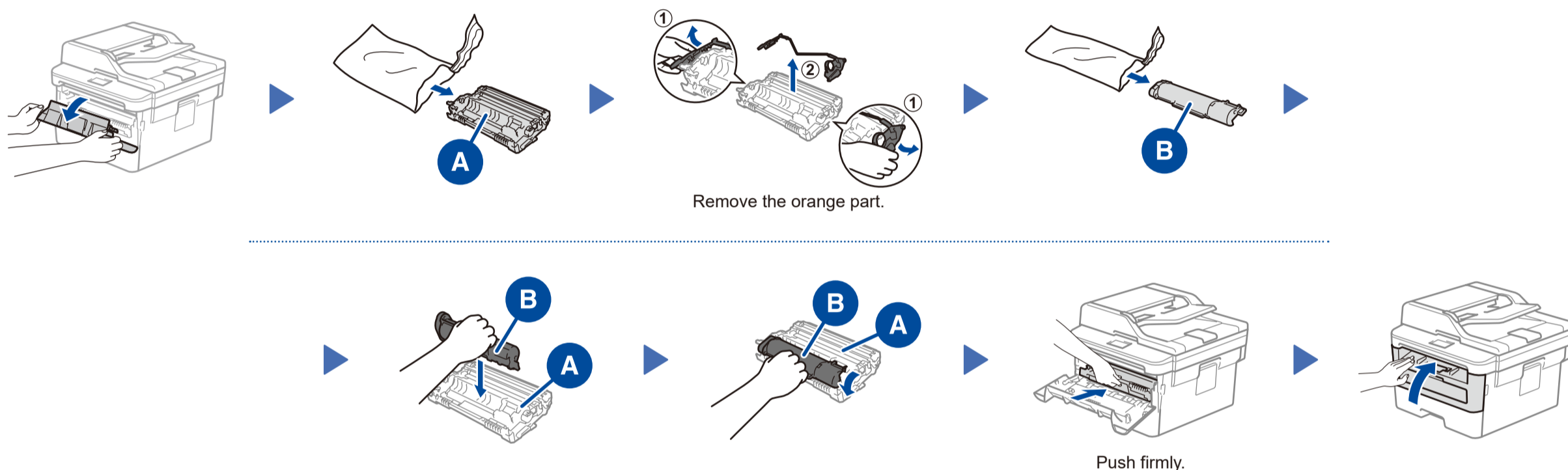
Operation Videos

www.95105369.com

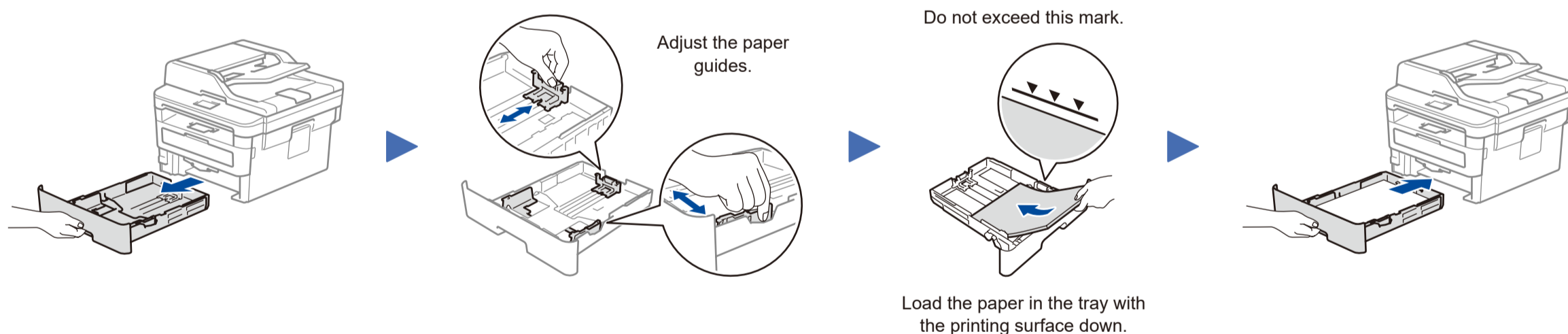


Installation
& Using
Videos

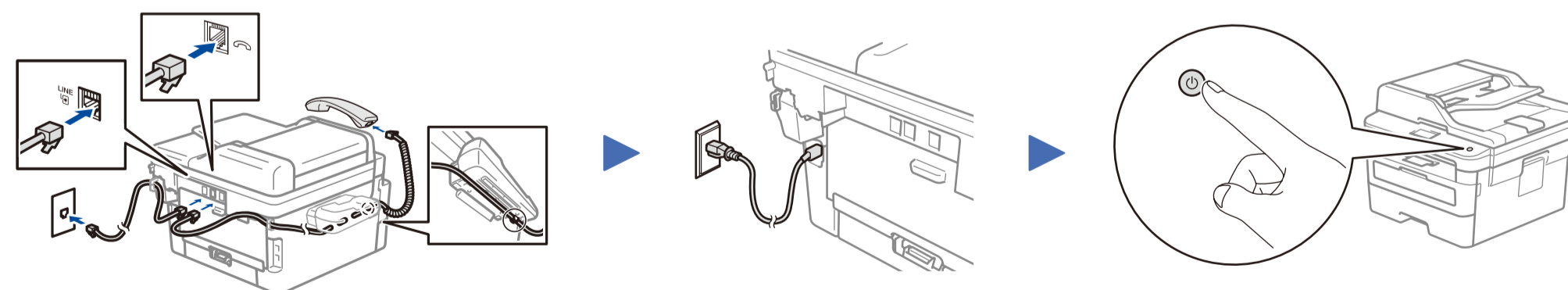
1 Remove the packing materials and install the drum unit and toner cartridge assembly



2 Load paper in the paper tray



3 Connect telephone line and power cord, and turn the machine on.



Connect telephone line and handset cord
(Only for MFC-B7720DN/MFC-B7700D)

4 Select a device to connect to your machine

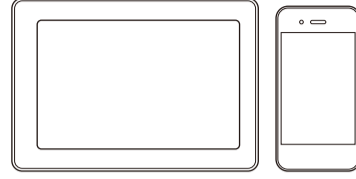
Computer



Go to **5** and follow the instructions.

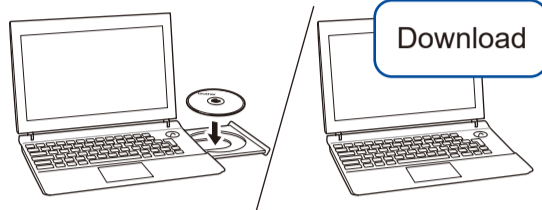
NOTE:
We recommend configuring wireless settings from your computer.

Mobile Device (MFC-B7720DN/DCP-B7535DW/DCP-B7530DN/DCP-B7520DW)



Go to **6** and follow the instructions.

5 Connect your computer



Put the installation disc into your CD/DVD drive, or download the Full Driver & Software Package at:

www.95105369.com

If you are using a recently released operating system on your computer, visit the above websites for updated driver and software information.

Brother regularly updates firmware to add features and apply bug fixes. To check for the latest firmware, visit support.brother.com/up5.

▶ Follow the on-screen instructions and prompts.

▶ Finished

For Windows®:
If the Brother screen does not appear automatically, go to **Computer (This PC)**. Double-click the CD/DVD-ROM icon, and then double-click **start.exe**.

For Mac:
For full driver functionality, we recommend choosing the **CUPS driver** when adding a printer.

Can't Connect? Check the following:

Wireless network

▶ Restart your wireless access point/router (if possible).

Wired network
USB connection

▶ Disconnect the cable.

▶ Restart your machine and computer, and then go to **5**.

▶ If still not successful, go to **6**.

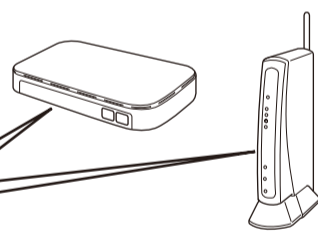
▶ If still not successful, visit www.95105369.com for FAQs & Troubleshooting.

6 Alternative wireless setup (DCP-B7535DW/DCP-B7520DW)

Find your SSID (Network Name) and Network Key (Password) on your wireless access point/router and write them in the table provided below.

SSID (Network Name)	
Network Key (Password)	

SSID: XXXXXXXX
Network key: XXXX



▶ To select each menu option, press ▲ or ▼, and then press **OK** to confirm. Select [Network] > [WLAN] > [Setup Wizard], and then press ▲.

▶ Select the SSID (Network Name) for your access point/router and enter the Network Key (Password).

▶ When the wireless setup is successful, the touchscreen displays [Connected].

For Computer

Go to **5** to install software.

For Mobile Device

Go to **7** to install apps.

If you cannot find this information, ask your network administrator or wireless access point/router manufacturer.

If setup is not successful, restart your Brother machine and your wireless access point/router, and repeat **6**.

7 Print or scan using your mobile device (Scan only by Brother iPrint&Scan) (MFC-B7720DN/DCP-B7535DW/DCP-B7530DN/DCP-B7520DW)

Your mobile device must be connected to the same wireless network as your Brother machine. (See **6**)



Download and install our free application **Brother iPrint&Scan**.

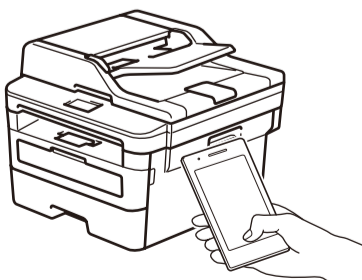


Read the two-dimensional code (or Visit <http://m.95105369.com/I-SDownload.aspx>), download and install our free application **Brother iPrint&Scan**.

NOTE:
We suggest Android users using a mobile browser to scan and download our product.

AirPrint is available for all supported iOS devices including iPhone, iPad and iPod touch. You do not need to download any software to use AirPrint. For more information, see the *Online User's Guide*.

Search Mopria from the search engine you use, then download and install the Mopria® Print Service app using your Android™ device.



Optional apps

You can print from and scan to your mobile device using various apps (Scan only by **Brother iPrint&Scan**). For instructions, see the *Online User's Guide*.