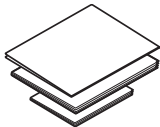
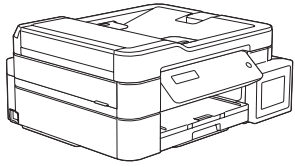


## 1 Unpack the machine and check the components

Remove the protective tape and film covering the machine and the ink tank cover.



**Inbox Ink Bottles\***

- Black
- Yellow
- Cyan
- Magenta

**Quick Setup Guide  
Product Safety Guide**

**Power Cord**



**USB Interface Cable**



**Brother Installation Disc**



**Telephone Line Cord  
(MFC-T810W only)**

### NOTE

- The *Reference Guide* for these models is available on the enclosed installation disc.
- The illustrations in this *Quick Setup Guide* show the MFC-T810W.
- Save all packing materials and the box in case you must ship your machine.
- **For a network connection you must purchase a network interface cable. A USB cable is included with your machine.**

### USB cable

We recommend using a USB 2.0 cable (Type A/B) that is no more than 2 metres long.

### Ethernet (Network) cable (MFC-T810W only)

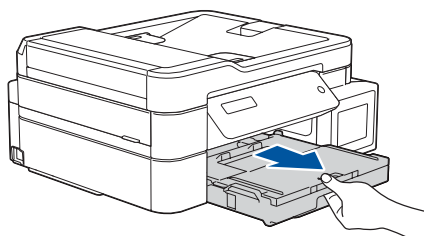
Use a straight-through Category 5 (or greater) twisted-pair cable for 10BASE-T or 100BASE-TX Fast Ethernet Network.

### Secure Network Access

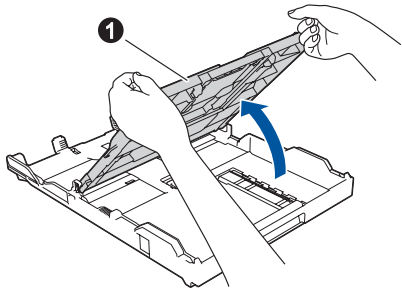
Your machine's default password is on the label on the back of the machine (preceded by "Pwd").

We strongly recommend you change it to protect your machine from unauthorised access.

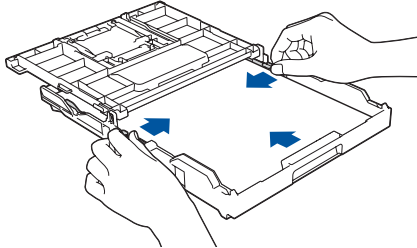
## 2 Load paper in the paper tray



Pull the paper tray completely out of the machine.

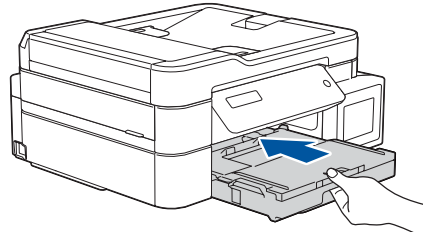


Open the output paper tray cover ❶.

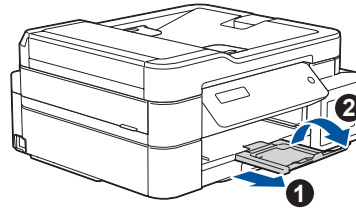


Adjust the paper guides.

Fan the paper well and load it in the tray with the printing surface down.



Close the output paper tray cover, and then slowly push the tray completely into the machine.



### NOTE

Pull out the paper support ❶, and unfold the paper support flap ❷ so that the printed pages do not fall.

## 3 Connect the power cord

Connect the power cord. The machine will power on automatically.

## 4 Set the date and time

### For DCP models:

Press ▲ or ▼ to select the number, and then press **OK** to set the date and time.

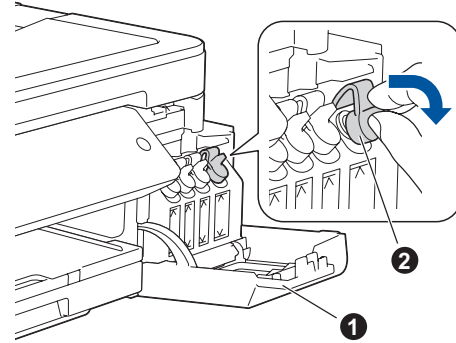
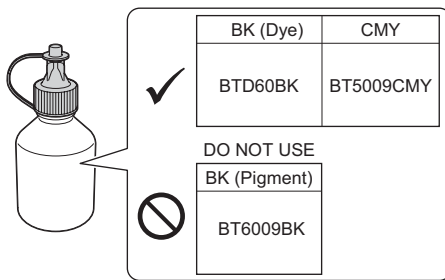
### For MFC model:

Follow the prompts displayed on the LCD to set the date and time.

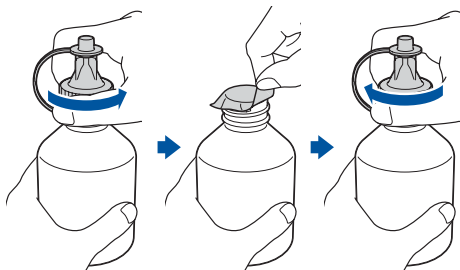
## 5 Fill the ink tanks with the inbox ink

### IMPORTANT

Check the ink bottle model name on the label. Incorrect ink may cause damage to the machine.



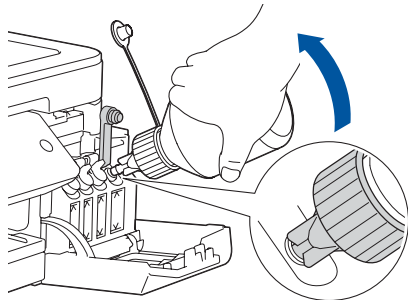
Open the ink tank cover ❶ and pull the tab ❷ downwards to open the cap of the ink tank.



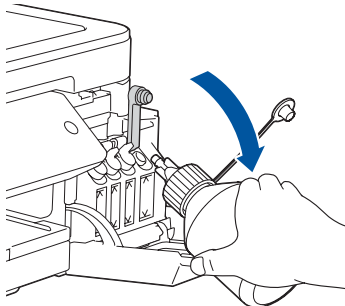
Remove the cap and protective film from the ink bottle, and then replace the cap.

### NOTE

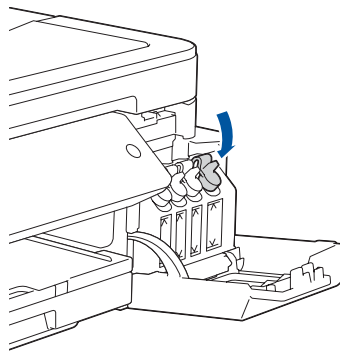
Fasten the ink bottle cap tightly to avoid leakage.



Remove the tip of the ink bottle. Insert the nozzle of the ink bottle firmly so that the ink does not spill. Fill the ink tank by gently squeezing the bottle as shown. Empty the entire bottle into the ink tank.



Point the nozzle upward so that the ink does not spill, and then remove the nozzle from the ink tank.



Push down on the cap of the ink tank to close it tightly. Repeat step ❷ for the three other ink tanks.

Close the ink tank cover. The machine will prepare the ink tube system for printing.

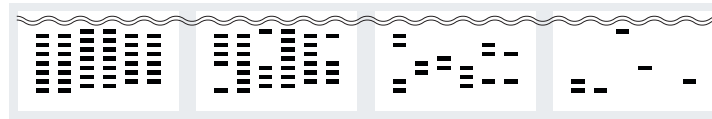
## 6 Machine settings

When the machine has finished the initial cleaning process, follow the steps on the LCD to configure the machine settings.

- Check print quality

### NOTE

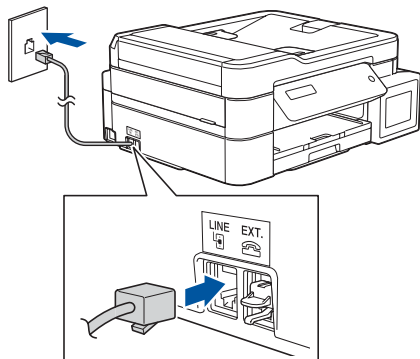
Refer to the sample below to check the print quality.



None      A Few      About Half      Many

## 7 Connect the telephone line cord (MFC-T810W only)

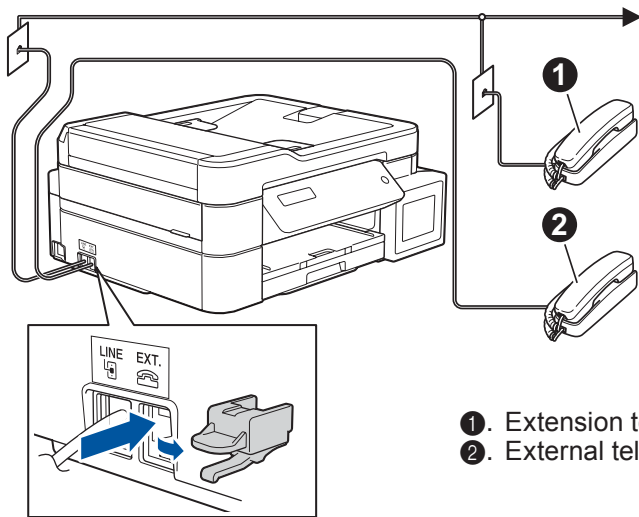
If you are not using your machine as a fax, go to ❸.



Connect the telephone line cord. Use the socket marked **LINE**.

### NOTE

If you are sharing one telephone line with an external telephone, connect it as shown below.



❶ Extension telephone  
❷ External telephone

8

Select a device to connect to your machine

Computer



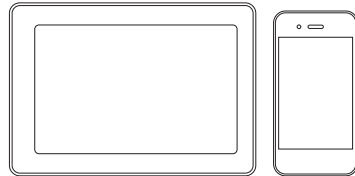
Go to **9** and follow the instructions.

NOTE

We recommend configuring wireless settings from your computer.

Mobile Device

(DCP-T510W/DCP-T710W/MFC-T810W only)

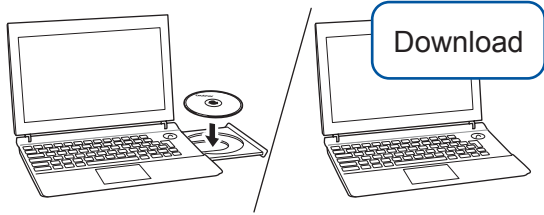


Go to **10** and follow the instructions.

9

Connect your computer

Brother regularly updates firmware to add features and apply bug fixes. To check for the latest firmware, visit [support.brother.com/up4](http://support.brother.com/up4).



Put the installation disc into your CD/DVD drive, or download the Full Driver & Software Package at:

[www.95105369.com](http://www.95105369.com)

If you are using a recently released operating system on your computer, visit the above websites for updated driver and software information.

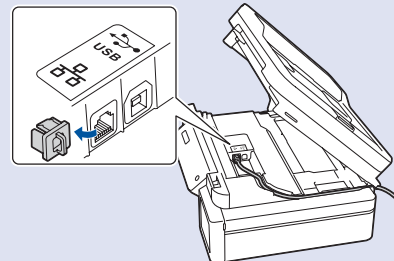
Follow the on-screen instructions and prompts.

For Windows®:  
If the Brother screen does not appear automatically, go to **Computer (My Computer/This PC)**. Double-click the CD/DVD-ROM icon, and then double-click **start.exe**.

For Mac:  
For full driver functionality, we recommend choosing the **CUPS driver** when adding a printer.

For Wired Network Connection\* and USB Connection:

Locate the correct port (based on the cable you are using) inside the machine as shown.



\*MFC-T810W only

Finished

Can't Connect? Check the following:



Wireless network  
(DCP-T510W/DCP-T710W/  
MFC-T810W only)

Restart your wireless access point/router  
(if possible).



Wired network  
(MFC-T810W only)



USB connection

Disconnect the cable.

Restart your machine and computer,  
and then go to **9**.

If still not successful, go to **10**.

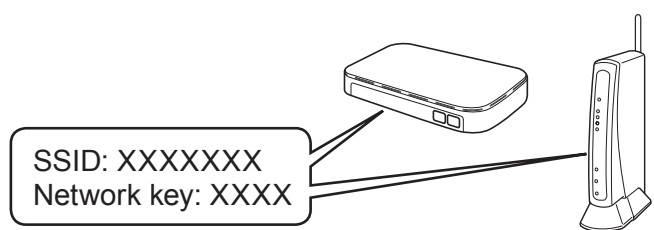
If still not successful, visit [www.95105369.com](http://www.95105369.com)  
for FAQs and Troubleshooting.

10

Alternative wireless setup  
(DCP-T510W/DCP-T710W/MFC-T810W only)

Find your SSID (Network Name) and Network Key (Password) on your wireless access point/router and write them in the table provided below.

SSID (Network Name)	
Network Key (Password)	



If you cannot find this information, ask your network administrator or wireless access point/router manufacturer.

1. Press **Menu**.
2. Press **▲** or **▼** to select [Network], and then press **OK**.
3. Press **▲** or **▼** to select [WLAN], and then press **OK**.
4. Press **▲** or **▼** to select [Setup Wizard], and then press **OK**.

Select the SSID (Network Name) for your access point/router and enter the Network Key (Password). For more information, see *Enter Text on Your Brother Machine* in the *Online User's Guide*.

When the wireless setup is successful, the LCD displays [Connected].

If setup is not successful, restart your Brother machine and your wireless access point/router, and repeat **10**.

For Computer

Go to **9** to install software.

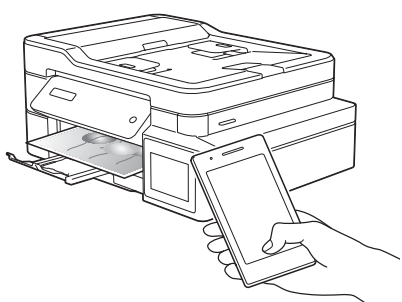
For Mobile Device

Go to **11** to install apps.

11

Print or scan using your mobile device  
(DCP-T510W/DCP-T710W/MFC-T810W only)

Your mobile device must be connected to the same wireless network as your Brother machine.



Works with  
**Apple AirPrint**



AirPrint is available for all supported iOS devices including iPhone, iPad, and iPod touch. You do not need to download any software to use AirPrint. For more information, see the *Online User's Guide*.

Search Mopria from the search engine you use, then download and install the Mopria® Print Service app using your Android™ device.

Download and install our free application **Brother iPrint&Scan**.



Read the two-dimensional code (or visit [www.95105369.com](http://www.95105369.com)), click **iPrint&Scan** from the mobile application menu on the right-lower corner to enter the download page.

Optional apps

You can print from and scan to your mobile device using various apps.

For instructions, see the *Online User's Guide*.