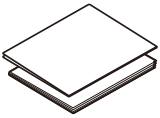
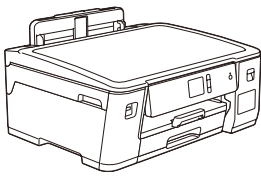


1

Unpack the machine and check the components

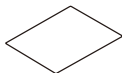
The components included in the box may differ depending on your country. Remove the protective tape or film covering the machine.



Starter Ink Bottles
• [BT5001Y] Yellow
• [BT5001C] Cyan
• [BT5001M] Magenta

**Quick Setup Guide
Product Safety Guide**

Brother Installation Disc



Maintenance Sheet



**USB Interface Cable
(For some countries)**

NOTE

- The *Reference Guide* for this model is available on the enclosed installation disc.
- Save all packing materials and the box in case you must ship your machine.
- **You must purchase the correct interface cable for the interface you want to use. A USB cable is included in some countries.**

USB cable

Use a USB 2.0 cable (Type A/B) that is no more than 16 feet (5 meters) long.

Ethernet (Network) cable

Use a straight-through Category 5 (or greater) twisted-pair cable for 10BASE-T or 100BASE-TX Fast Ethernet Network.

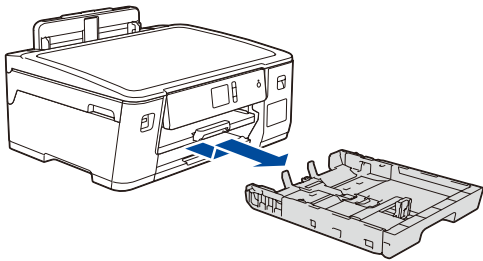


Watch our FAQ Videos for help with setting up your Brother machine.
support.brother.com/videos

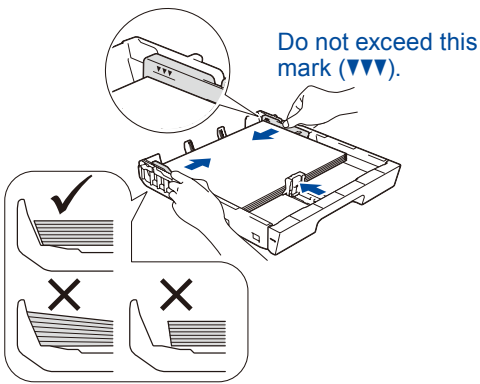
2

Load plain Letter/A4 paper

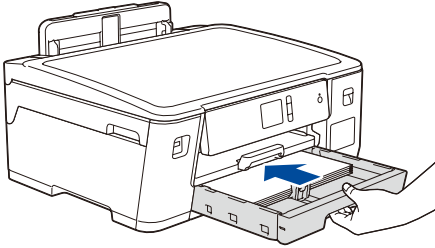
For more information about paper handling and sizes, see the *Reference Guide*.



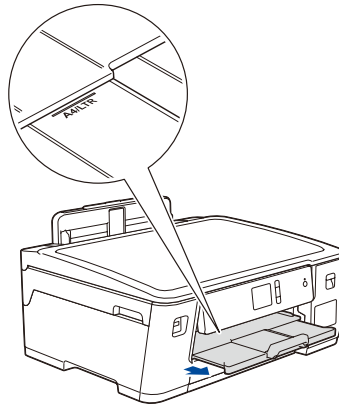
Pull the paper tray completely out of the machine as shown by the arrow.



Adjust the paper guides.
Fan the paper well and load it in the tray.



Slowly push the paper tray completely into the machine.



Pull out the paper support until it locks into place.

3

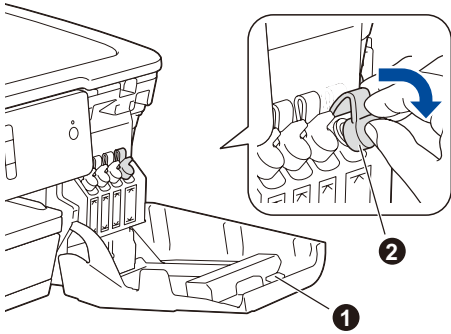
Connect the power cord

Connect the power cord and the machine powers on automatically.

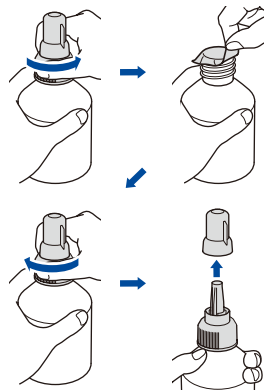
Follow the touchscreen instructions to set the date and time.

4

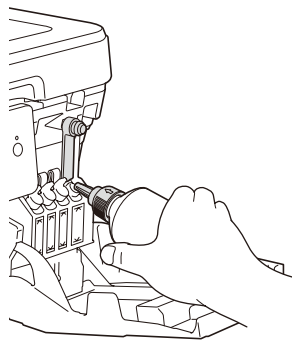
Fill the ink tanks with the starter ink



Open the ink tank cover ① and pull the tab ② downwards to open the cap of the ink tank.

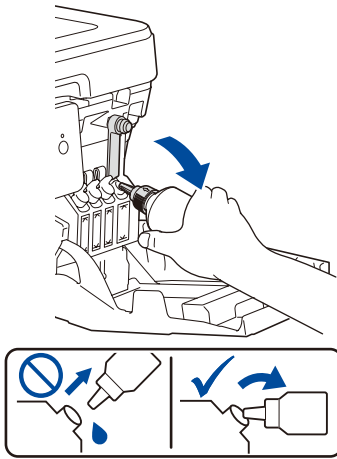
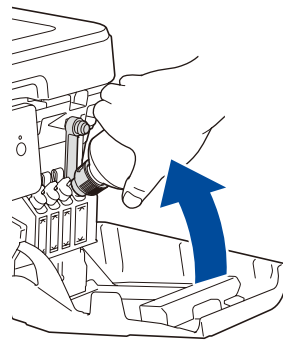


Remove the film and tighten the cap firmly.



Remove the nozzle cap and insert the bottle nozzle firmly into the ink tank so that the ink does not spill.

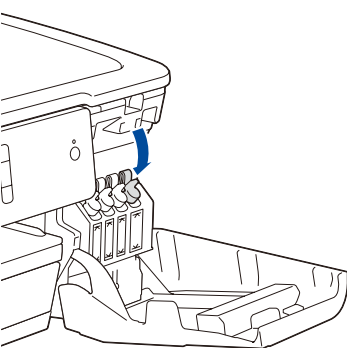
The bottle is self-standing and the ink fills automatically until the bottle is empty. To fill the ink tank faster, squeeze the bottle on both sides.



When finished, remove the bottle, pointing the nozzle upward so the ink does not spill.

5

Machine settings



Push down on the cap of the ink tank to close it tightly. Repeat step 4 for the three other ink tanks.

Close the ink tank cover. The machine will prepare the ink tube system for printing.

When the machine has finished the initial cleaning process, follow the touchscreen instructions to configure the machine settings.

- Check print quality
- Configure the tray or paper size settings
- Set Firmware Update Notice
- Print the installation sheet

6

Select your language (if needed)

1. Press [Settings] > [All Settings] > [Initial Setup] > [Local Language].
2. Press your language.
3. Press [OK].



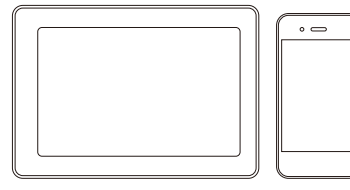
7 Select a device to connect to your machine

Computer



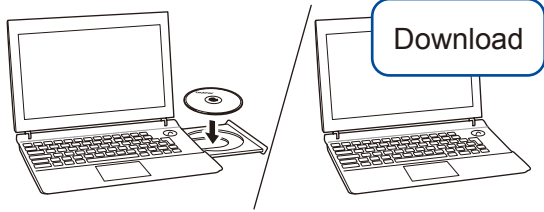
Go to **8** and follow the instructions.

Mobile Device



Go to **9** and follow the instructions.

8 Connect your computer



Put the installation disc into your CD/DVD drive, or download the Full Driver & Software Package at:

For Windows®: support.brother.com/windows
For Mac: support.brother.com/mac

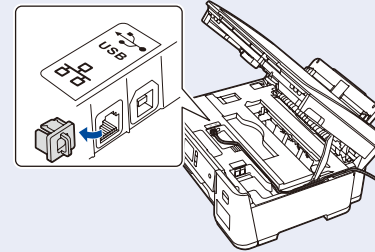
If you are using a recently released operating system on your computer, visit the above websites for updated driver and software information.

Follow the on-screen instructions and prompts.

For Windows®:
If the Brother screen does not appear automatically, go to **Computer (My Computer/This PC)**. Double-click the CD/DVD-ROM icon, and then double-click **start.exe**.

For Mac:
For full driver functionality, we recommend choosing the **CUPS driver** when adding a printer.

For Wired Network Connection and USB Connection:
Locate the correct port (based on the cable you are using) inside the machine as shown.



Finished

For Network Users: Important Notice for Network Security
The default Web Based Management password is located on the back of the machine and marked "Pwd". We recommend immediately changing the default password to use network tools/utilities securely and to protect your machine from unauthorized access.

Can't Connect? Check the following:

Wireless network

Restart your wireless access point/router (if possible).

Wired network
USB connection

Disconnect the cable.

Restart your machine and computer, and then go to **8**.

If still not successful, go to **9**.

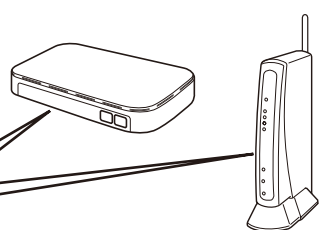
If still not successful, visit support.brother.com for FAQs and Troubleshooting.

9 Alternative wireless setup

Find your SSID (Network Name) and Network Key (Password) on your wireless access point/router and write them in the table provided below.

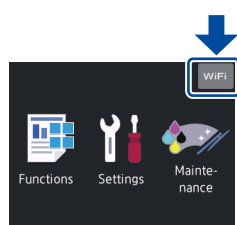
SSID (Network Name)	
Network Key (Password)	

SSID: XXXXXXXX
Network key: XXXX



If you cannot find this information, ask your network administrator or wireless access point/router manufacturer.

Go to your machine, and press **WiFi** > [Setup Wizard] > [Yes].



Select the SSID (Network Name) for your access point/router and enter the Network Key (Password).

When the wireless setup is successful, the touchscreen displays [Connected].

If setup is not successful, restart your Brother machine and your wireless access point/router, and repeat **9**.

For Computer

Go to **8** to install software.

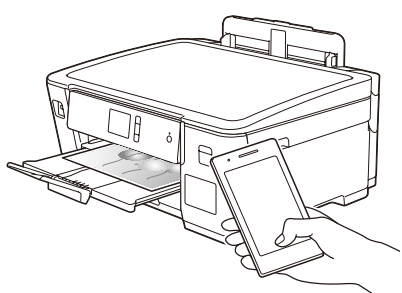
For Mobile Device

Go to **10** to install apps.

Even if you do not have a wireless access point/router, you can connect your device and your machine directly. For additional wireless network support, go to support.brother.com/wireless-support.

10 Print using your mobile device

Your mobile device must be connected to the same wireless network as your Brother machine.



Works with
Apple AirPrint



AirPrint is available for all supported iOS devices including iPhone, iPad, and iPod touch. You do not need to download any software to use AirPrint. For more information, see the *Online User's Guide*.

Download and install the Mopria® Print Service app from Google Play™ using your Android™ device.

Download and install our free application **Brother iPrint&Scan** from a mobile application store, such as the App Store, Google Play™, or Microsoft® Store using your mobile device.

Brother SupportCenter is a mobile app that provides the latest support information for your Brother product. Visit the App Store or Google Play™ to download.



Optional apps

You can print from your mobile device using various apps. For instructions, see the *Online User's Guide*.



Additional Wireless Support: support.brother.com/wireless-support

For FAQs, Troubleshooting, and to download software and manuals, visit support.brother.com. For product specifications, see the *Online User's Guide*.

© 2018 Brother Industries, Ltd. All rights reserved.