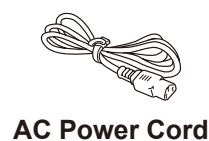
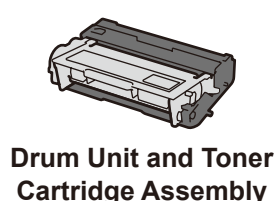
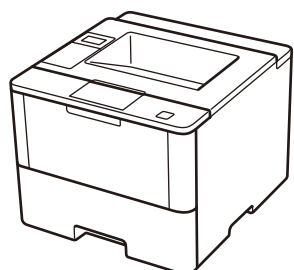


## Unpack the machine and check the components



Watch our Video FAQs for help with setting up your Brother machine:  
[solutions.brother.com/videos](http://solutions.brother.com/videos).

### NOTE:

You must purchase the correct interface cable for the interface you want to use.

#### USB cable

We recommend using a USB 2.0 cable (Type A/B) that is no more than 2 metres long.

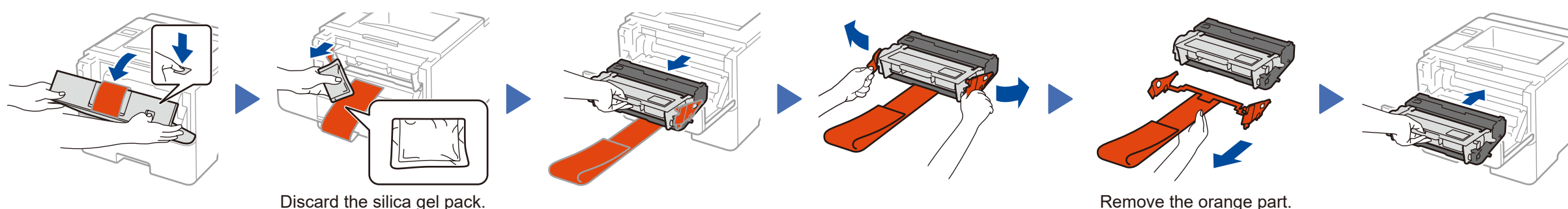
#### Network cable

Use a straight-through Category 5 (or greater) twisted-pair cable.

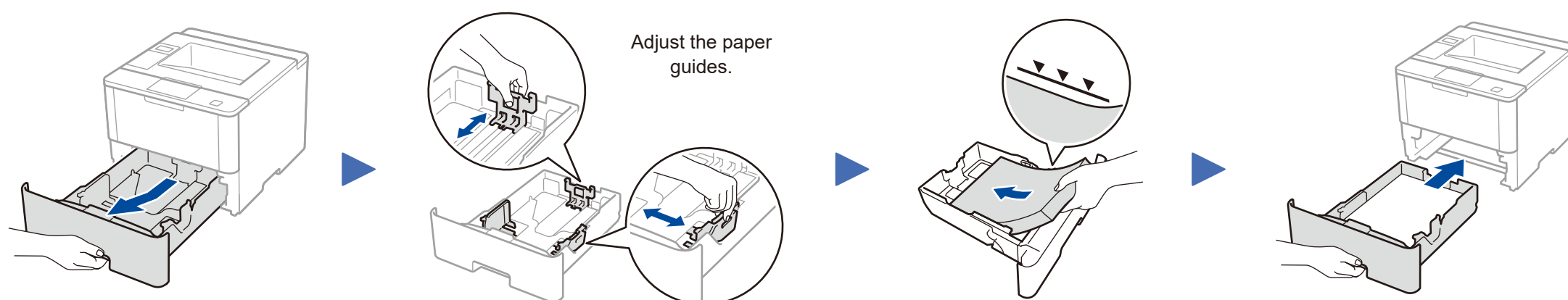
### Secure Network Access

Your machine's default password is on the label on the back of the machine (preceded by "Pwd"). We strongly recommend you change it to protect your machine from unauthorised access.

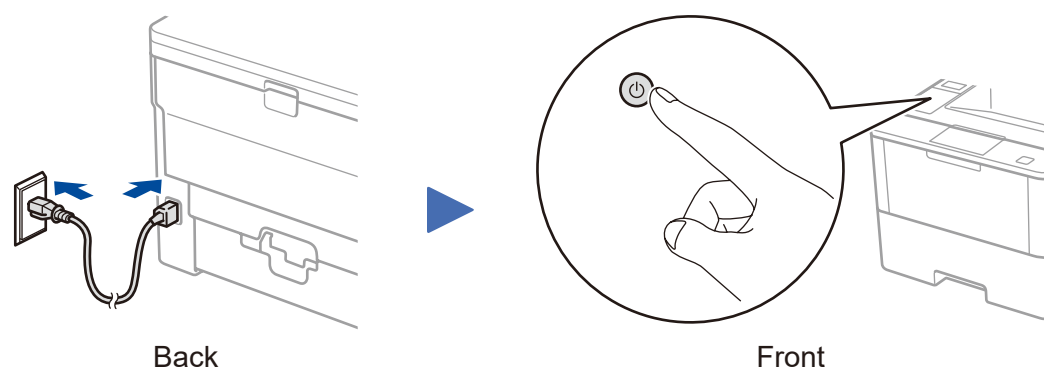
## 1 Remove the packing materials and install the drum unit and toner cartridge assembly



## 2 Load paper in the paper tray

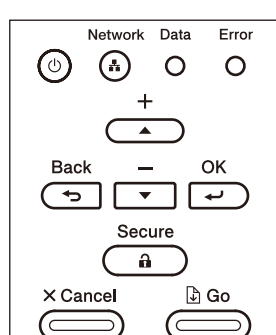


## 3 Connect the power cord and turn the machine on

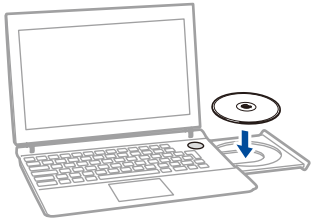


## 4 Select your language (if needed)

1. Press ▼ or ▲ to select [General Setup], and then press **OK**.
2. Press **OK** to select [Local Language].
3. Press ▼ or ▲ to select your language, and then press **OK**.
4. Press **Cancel**.





Windows computer with CD-ROM drive



**NOTE:**  
If the Brother screen does not appear automatically, go to **Computer (This PC)**. Double-click the CD/DVD-ROM icon, and then double-click **start.exe**.

Choose your Connection Type:

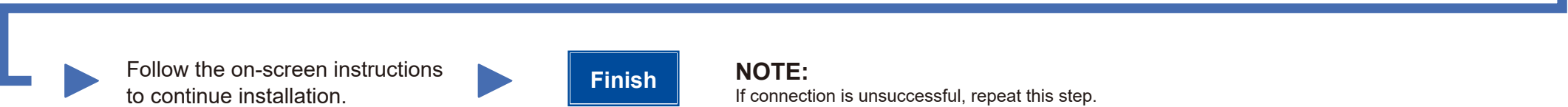
☐ Wireless Network Connection (Wireless)

☐ Local Connection (USB)

Macintosh/Windows computer without CD-ROM drive



Download the full driver and software package from the Brother Solutions Center.  
(Macintosh) [solutions.brother.com/mac](http://solutions.brother.com/mac)  
(Windows) [solutions.brother.com/windows](http://solutions.brother.com/windows)



Print using your mobile device



Download “Brother iPrint&Scan” to start using your machine with mobile devices.

[solutions.brother.com/ips](http://solutions.brother.com/ips)

