

## Quick Setup Guide

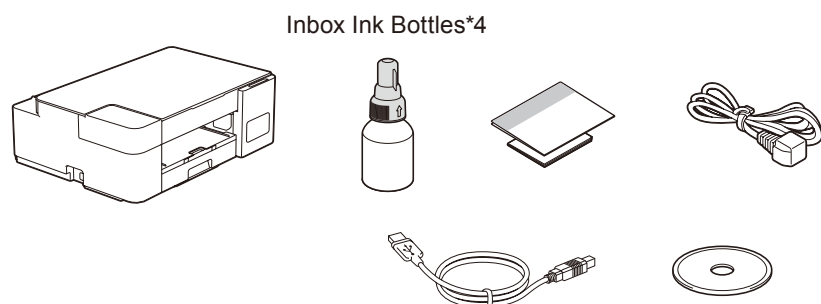
Read the *Product Safety Guide* first, then read this guide for the correct installation procedure. Keep this guide next to your machine for quick reference.

CHN-ENG  
Version A

In this guide, the illustrations of the DCP-T420W are used unless otherwise specified.

You must follow steps 1 to 5 to complete the setup.

### 1 Unpack the machine and check the components



Remove the protective tape and the film covering the machine.

#### NOTE

- Save all packing materials and the box in case you must ship your machine.
- We recommend using a USB 2.0 cable (Type A/B) that is no more than 2 meters long.

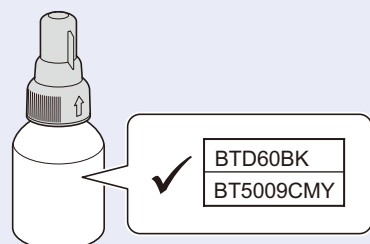
#### Operation Videos

[www.95105369.com](http://www.95105369.com)



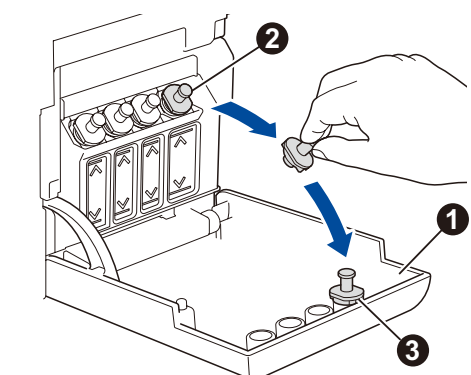
Installation  
& Using  
Videos

### 2 Fill the ink tanks with inbox ink

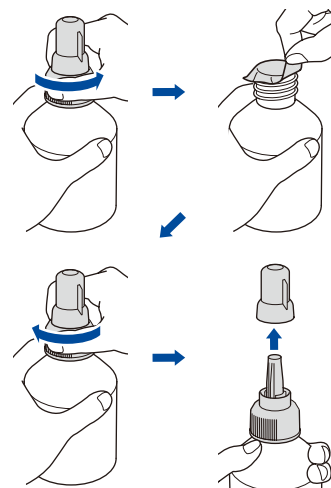


#### IMPORTANT

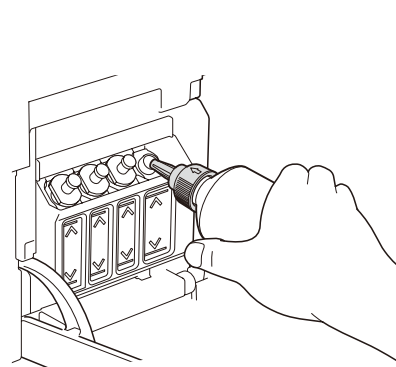
Check the ink bottle model name on the label. Using the incorrect ink may cause damage to the machine.



Open the ink tank cover ①, remove the cap ②, and place it on the back of the cover ③.

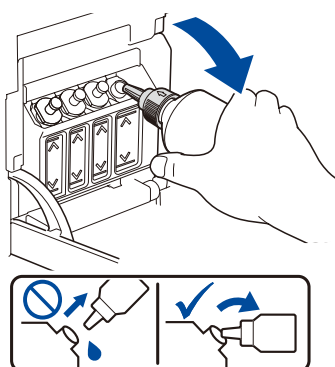
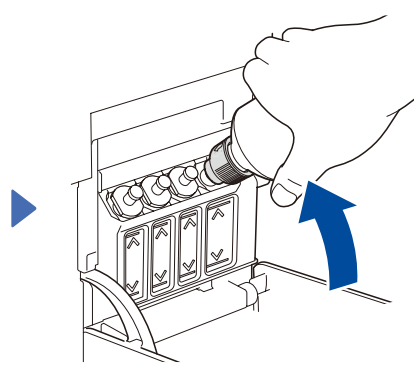


Remove the film and tighten the cap firmly.

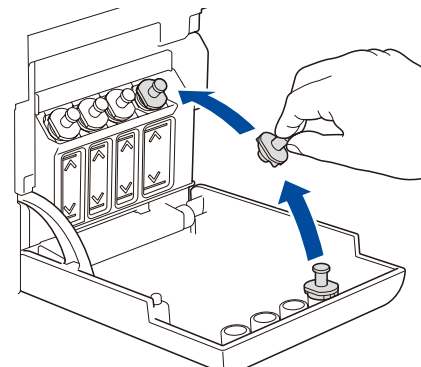


Remove the nozzle cap and insert the bottle nozzle firmly into the ink tank so that the ink does not spill.

The bottle is self-standing and the ink fills automatically until the bottle is empty. To fill the ink tank faster, squeeze the bottle on both sides.



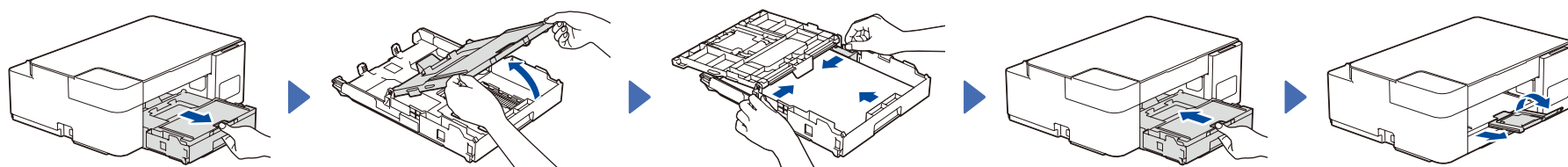
When finished, remove the bottle, pointing the nozzle upward so the ink does not spill.



Replace the ink tank cap. Repeat step 2 for the other ink tanks, and then close the ink tank cover.

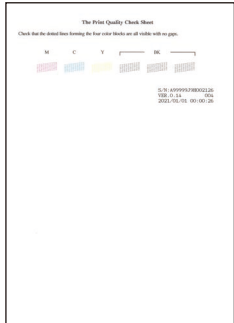
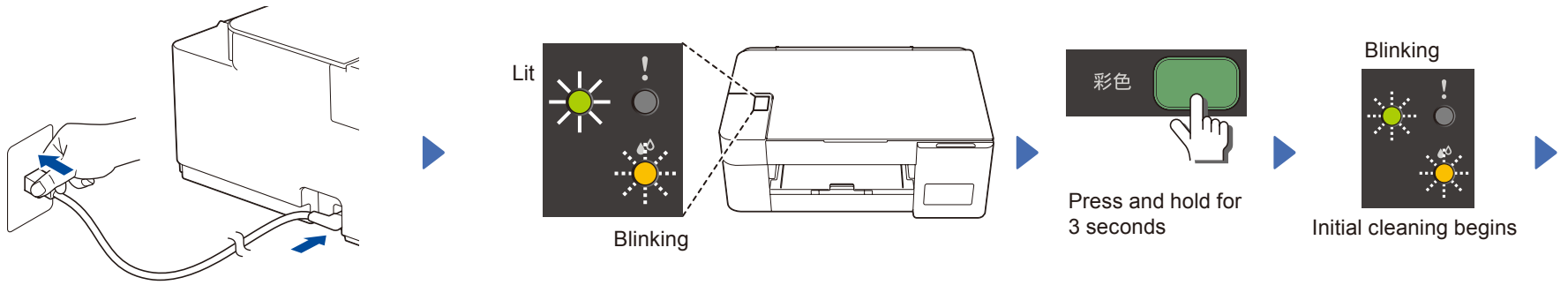
### 3 Load plain A4 paper in the paper tray

Fan the paper well.



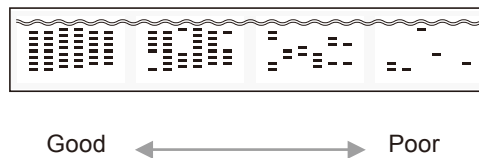
## 4

## Start the initial cleaning



The machine prints the Print Quality Check Sheet.

Check the Print Quality Check Sheet.



To improve the print quality, clean the print head. See *Improve Print Quality* in this guide.

## 5

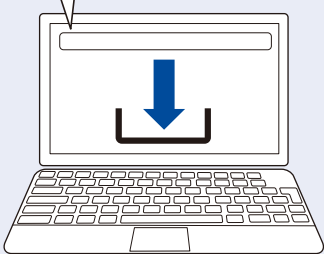
## Connect your computer or mobile device

Connect your Brother machine and computer/mobile device to the same network.

Install Brother software to use your machine. Visit one of the following websites:

**For Computers:**

[setup.brother.com](http://setup.brother.com)



For Windows only, CD installation is also available.

**For Mobile Devices:**

(DCP-T420W/DCP-T425W/  
DCP-T426W/DCP-T428W)

[brother.com/apps](http://brother.com/apps)

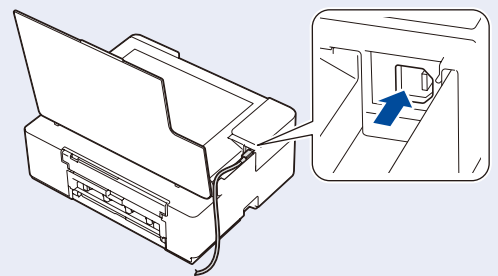


Install the **Brother iPrint&Scan** application.

Follow the on-screen instructions.

**For USB Connection:**

Use the USB port inside the machine, as shown.



## Setup Complete

## Connect with WeChat (DCP-T420W / DCP-T425W / DCP-T426W)

Your machine can print through an applet of WeChat, which is called "兄弟畅享印". "兄弟畅享印" lets you wirelessly print photos and documents without the need to install an app or a driver.

Binding your printer before using WeChat print function for the first time. Please scan the QR code on the right for operation instructions.



Reference Guide



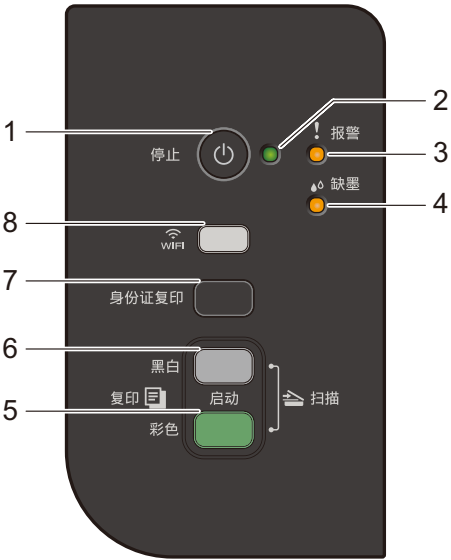
For detailed machine operation including scanning and troubleshooting tips, see the *Online User's Guide*:

[www.95105369.com](http://www.95105369.com)



Using &  
Troubleshooting

Control Panel Overview



1	Power / Stop button	5	Color Start button
2	Power LED	6	Mono Start button
3	Warning LED	7	<div>• Copy Shortcut button (DCP-T220/DCP-T226/DCP-T420W/DCP-T425W/DCP-T426W)</div> <div>• Upload button (DCP-T428W)</div>
4	Ink LED	8	Wi-Fi button / LED (DCP-T420W/DCP-T425W/DCP-T426W/DCP-T428W)










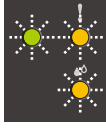

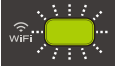

Press to turn the machine on. Press and hold to turn the machine off.

Machine Settings

The machine's settings are set from the application (**Brother iPrint&Scan** or **Brother Utilities**) on your computer or mobile device.

**Important Notice for Network Security:** The default password to manage this machine's settings is located on the back of the machine and marked "Pwd". We recommend immediately changing the default password to protect your machine from unauthorized access. See the *Online User's Guide*.

LED Indications

 Lit	 Blinking	 <ul style="list-style-type: none"><li>• Standby</li></ul>	 <ul style="list-style-type: none"><li>• Busy (blinking)</li><li>• Sleep (blinking slowly and faintly)</li></ul>	
 <ul style="list-style-type: none"><li>• See <i>Check Ink Volume</i> in this guide. When finished, press <b>Stop</b>.</li></ul>	 <ul style="list-style-type: none"><li>• Paper jam (blinking simultaneously): See <i>Remove Jammed Paper</i> in this guide.</li></ul>			
 <ul style="list-style-type: none"><li>• No paper loaded: Load paper in the tray, and then press <b>Mono Start</b> or <b>Color Start</b>.</li><li>• Tray not detected: Slowly push the paper tray completely into the machine.</li></ul>	 <ul style="list-style-type: none"><li>• Wrong paper size</li></ul>			
 <ul style="list-style-type: none"><li>• Out of memory</li></ul>	 <ul style="list-style-type: none"><li>• Machine error</li></ul>	For solutions, see the <i>Online User's Guide</i> : <a href="http://www.95105369.com">www.95105369.com</a>		
Wi-Fi (DCP-T420W/DCP-T425W/ DCP-T426W/DCP-T428W)		 <ul style="list-style-type: none"><li>• Off</li></ul>	 <ul style="list-style-type: none"><li>• Connecting</li></ul>	 <ul style="list-style-type: none"><li>• Connected</li></ul>

Copy

Normal Copy

1. Load the paper in the paper tray.
2. Place the document in the lower right corner of the scanner glass.
3. Press **Mono Start** or **Color Start**.

Multiple Copy

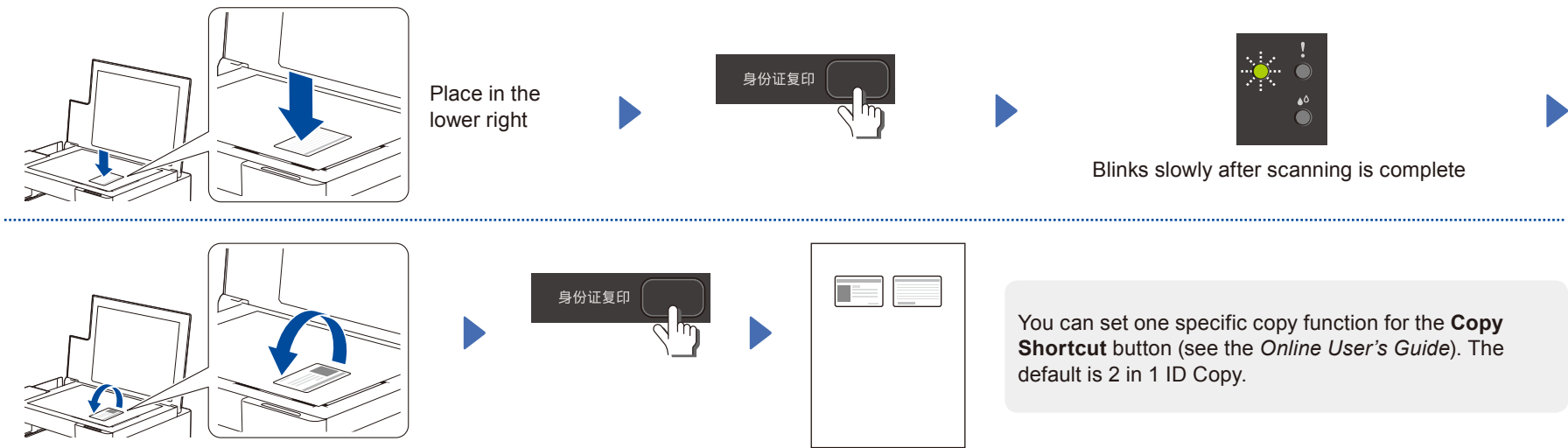
Press **Mono Start** or **Color Start** once for each additional copy.

Best Quality Copy

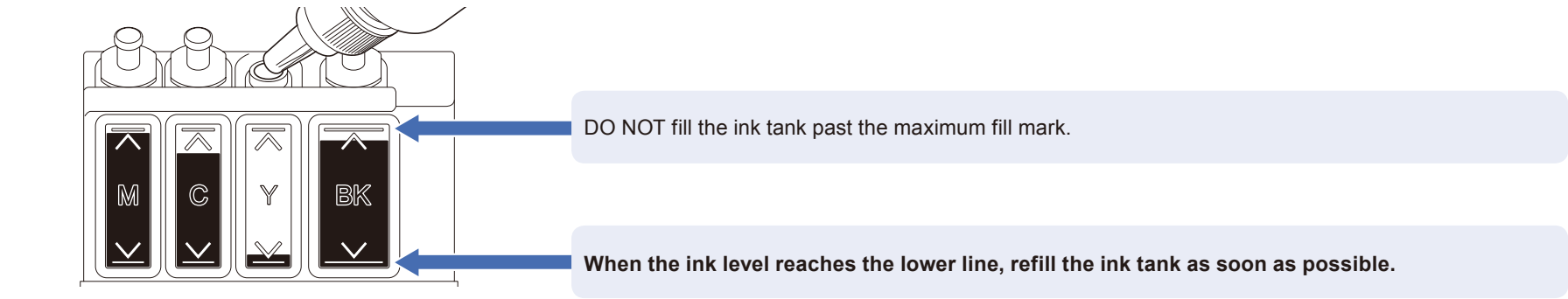
Press and hold **Mono Start** or **Color Start** for two seconds.

Other Copy

Use the **Brother iPrint&Scan** application on a computer or mobile device. See the *Online User's Guide*.



## Check Ink Volume



## Improve Print Quality

Clean the print head.



If the print quality does not improve with normal cleaning, try the Special cleaning (Note that this operation will consume a large amount of ink).

1. Make sure all ink tanks are at least half-full.
2. Use the procedure above, but hold **Mono Start** and **Color Start** simultaneously for five seconds while the **Ink LED** is blinking.

## Remove Jammed Paper

