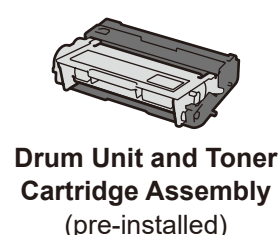


Unpack the machine and check the components



Watch our Video FAQs for help with setting up your Brother machine:
solutions.brother.com/videos.

NOTE:

- Manuals in Spanish for this model are available on the Brother Solutions Center. (USA only): solutions.brother.com/manuals
Los manuales en español de este modelo están disponibles en el Brother Solutions Center. (Solamente en los Estados Unidos): solutions.brother.com/manuals
- The available connection interfaces vary depending on the model.
- You must purchase the correct interface cable for the interface you want to use.

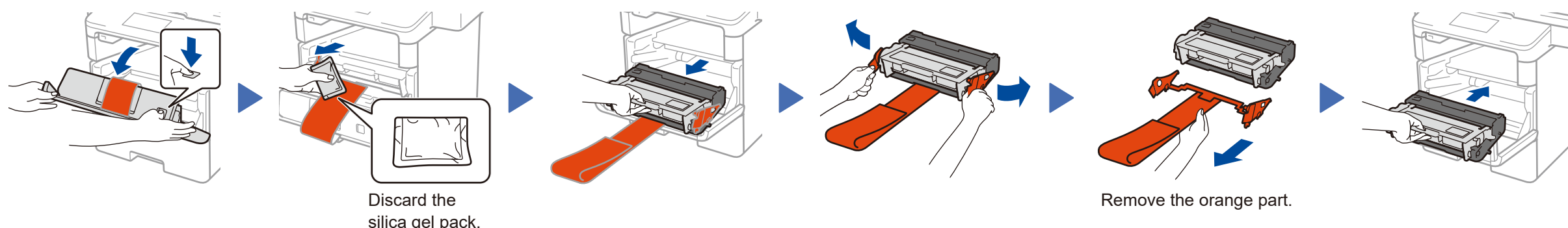
USB cable

We recommend using a USB 2.0 cable (Type A/B) that is no more than 6 feet (2 meters) long.

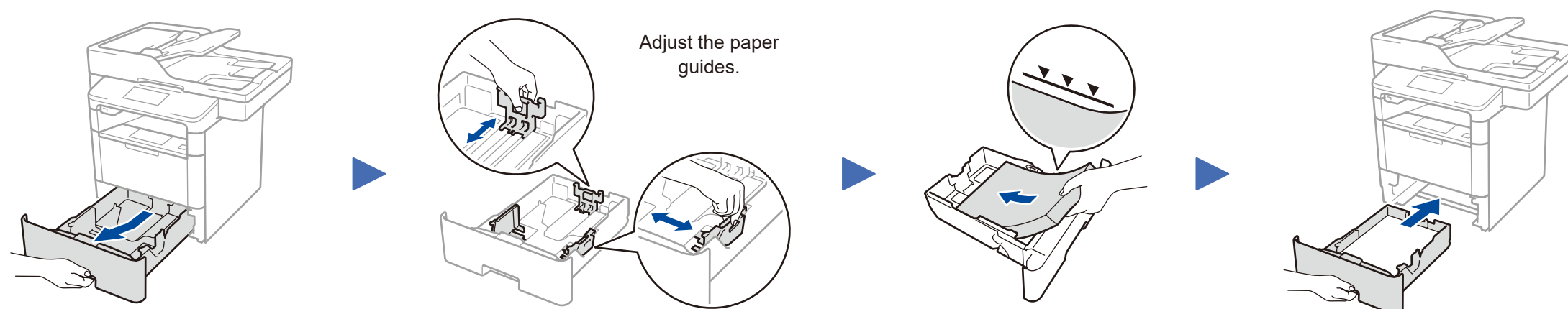
Network cable

Use a straight-through Category 5 (or greater) twisted-pair cable.

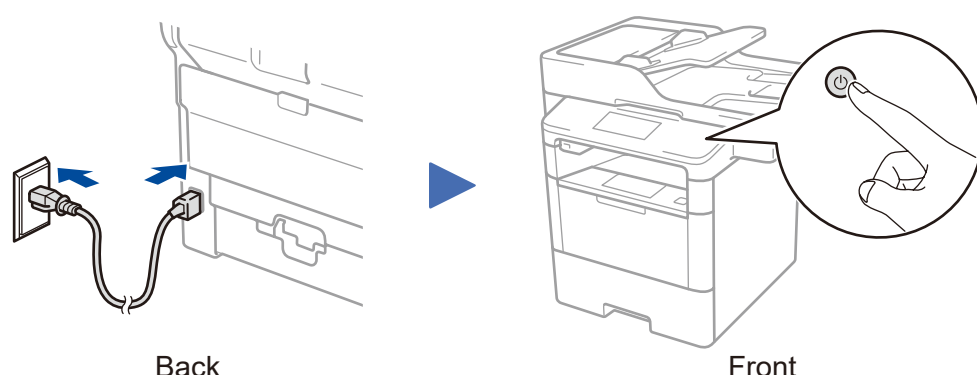
1 Remove the packing materials and install the drum unit and toner cartridge assembly



2 Load paper in the paper tray

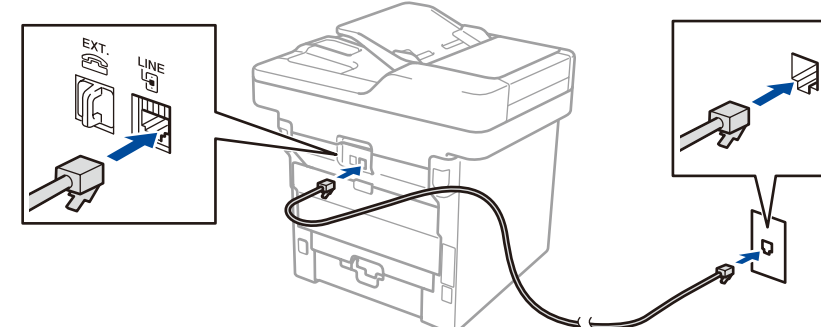


3 Connect the power cord and turn on the machine



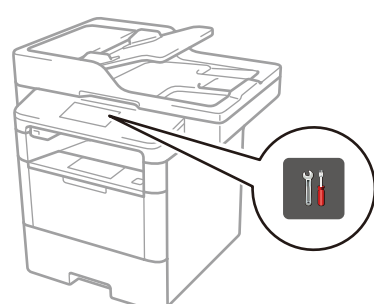
4 Connect the telephone line cord

If you do not plan to use the fax feature on this machine, go to step 5.



5 Select your language (if needed)

- On the machine's Touchscreen, press [Settings] > [All Settings] > [Initial Setup] > [Local Language].
- Press your language.
- Press .



6 Configure the machine for faxing

If you do not plan to use the fax feature on this machine, go to step 7.

A. Set the date and time

- Press [Settings] > [All Settings] > [Initial Setup] > [Date & Time].
- Date**
- Press [Date].
 - Enter the last two digits for the year using the Touchscreen, and then press [OK].
 - Enter the two digits for the month using the Touchscreen, and then press [OK].
 - Enter the two digits for the day using the Touchscreen, and then press [OK].

Clock Type

- Press [Clock Type].
 - Press [12h Clock] or [24h Clock].
- Time**
- Press [Time].
 - Enter the time using the Touchscreen.
 - 12h Clock only
 Press [AM/PM] to select [AM] or [PM].
 - Press [OK].
 - Press .

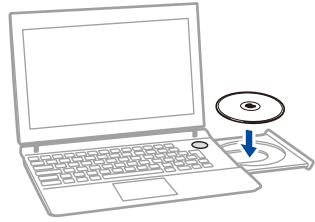
B. Set the Station ID

- Press [Settings] > [All Settings] > [Initial Setup] > [Station ID].
- Fax number**
- Press [Fax].
 - Enter your fax number (up to 20 digits) using the Touchscreen, and then press [OK].
- Telephone number**
- Press [Tel].
 - Enter your telephone number (up to 20 digits) using the Touchscreen, and then press [OK].
- Name**
- Press [Name].
 - Enter your name (up to 20 characters) using the Touchscreen, and then press [OK].
 - Press .

7 Connect your machine and install software

Brother regularly updates firmware to add features and fix identified problems. To check for the latest firmware, visit solutions.brother.com/up1.

Windows® computer with CD-ROM drive



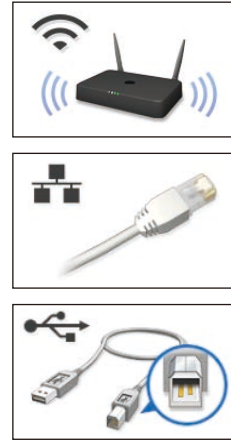
NOTE:
If the Brother screen does not appear automatically, click **(Start) > Computer (My Computer)**. (For Windows® 8: click the **(File Explorer)** icon on the taskbar, and then go to **Computer (This PC)**.)
Double-click the CD-ROM icon, and then double-click **start.exe**.

Windows® computer without CD-ROM drive



Download the full driver and software package from the Brother Solutions Center.
solutions.brother.com/windows

Choose your Connection Type:

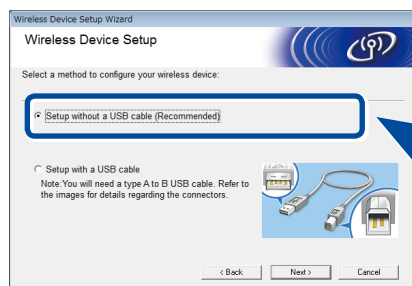


Follow the on-screen instructions to continue installation.

Follow the on-screen instructions to continue installation.

Finish

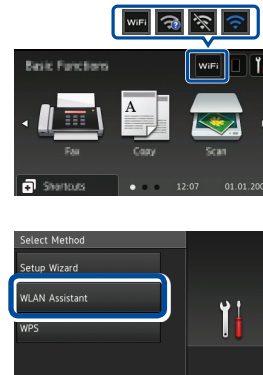
If using a wireless network connection:
When the **Wireless Device Setup** screen appears, select **Setup without a USB cable (Recommended)**.



When instructed, go to your machine's LCD.

a. Press the **WiFi** icon on the LCD.

b. Press [WLAN Assistant].



Follow the on-screen instructions to continue installation.

Finish

NOTE:

- When finished, restart your computer.
- If connection is unsuccessful, see **? Cannot set up your machine?** below.

NOTE:

If the LCD screen is blank, press **[Wake Up]** to wake up the device.

WiFi Alternate wireless configuration method (Setup Wizard)

Restart your wireless access point/router.



Find your
SSID: XXXXXXX
Network key: XXXX



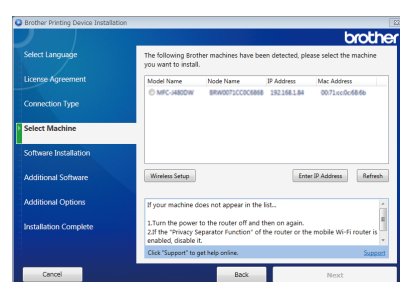
Press **WiFi** > [Setup Wizard] > [Yes].

Select the SSID.
Enter the Network key.

The LCD displays
[Connected].

If you cannot find this information, ask your network administrator or wireless access point/router manufacturer.

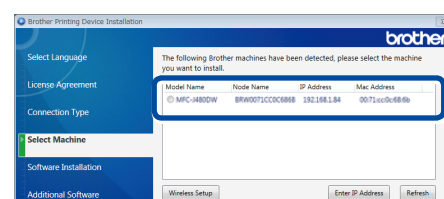
To use with your computer, follow Step 7 until the **Select Machine** screen appears, listing all machines in your network.



Select your machine.

Follow the on-screen instructions to continue installation.

Finish



NOTE:

- When finished, restart your computer.
- If connection is unsuccessful, see **? Cannot set up your machine?** below.

For Network Users: Important Notice for Network Security

The default Web Based Management password is located on the back of the machine and marked "Pwd". We recommend immediately changing the default password to use network tools/utilities securely and to protect your machine from unauthorized access.

Print and scan using your mobile device

Before printing from your mobile device, your machine must be configured according to step 7 or **WiFi Alternate wireless configuration method (Setup Wizard)**.



Download "Brother iPrint&Scan" to start using your machine with mobile devices.

solutions.brother.com/ips



? Cannot set up your machine?



Wired network



USB



Wireless network

Disconnect the cable.

Restart your machine,
computer and/or mobile
device.

Repeat 7.

Go to **WiFi Alternate wireless configuration method (Setup Wizard)**.

NOTE:

If you repeat these steps and connection is still unsuccessful, please visit the Brother Solutions Center at: <http://support.brother.com>.



Brother support website <http://support.brother.com>