

The latest manuals are available at the Brother support website: [support.brother.com/manuals](http://support.brother.com/manuals).

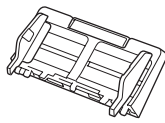
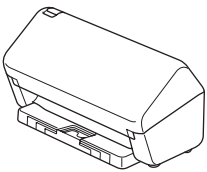
Please read the **Product Safety Guide**, located later in this document before you set up your machine.

## WARNING

**WARNING** indicates a potentially hazardous situation which, if not avoided, could result in death or serious injuries.

## 1 Unpack the machine and check the components

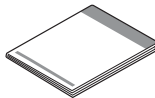
The components included in the box may differ depending on your country. Remove the protective tape and film covering the machine. Open the Front Cover and Roller Cover, and then remove the protective tape.



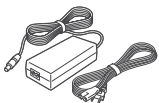
Automatic Document Feeder (ADF)



USB Interface Cable



Quick Setup Guide/Product Safety Guide



AC Adapter

## WARNING

- This product is packaged in a plastic bag. To avoid suffocation, keep plastic bags away from babies and children. Do not use the bag in cribs, beds, carriages, or playpens. The bag is not a toy.
- Use only the AC Adapter supplied with this product.

## NOTE

We recommend saving the original packaging in case you must ship your machine.

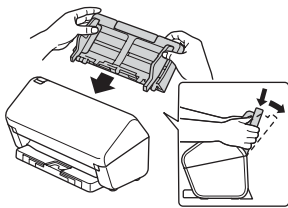
## For Network Users

Best practice is to configure a unique admin password for any network device.

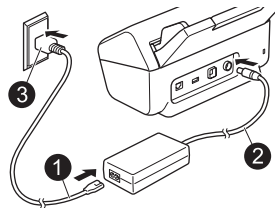
Your machine's default password is on the back of the machine (the eight-digit character string marked "Pwd"). We recommend changing this default password immediately in order to use network tools/utilities securely.

Unless otherwise specified, illustrations in this guide show the ADS-4300N.

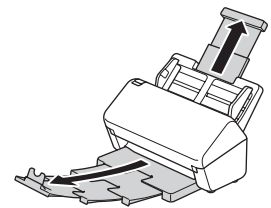
## 2 Prepare your machine



Attach the Automatic Document Feeder (ADF) firmly until it locks into place.



Connect the AC Adapter.



Extend the trays.

## NOTE

When loading a document, always fan the paper and align its edges before loading it into the Automatic Document Feeder (ADF).

## 3 Select your language (ADS-3300W/ADS-4700W/ADS-4900W only)

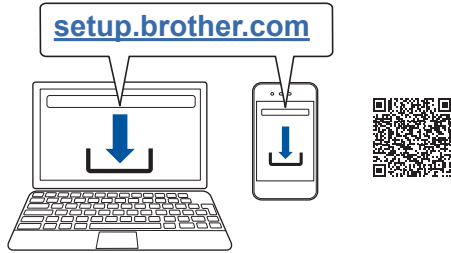
Press [Settings] > [Initial Setup] > [Local Language] and select your language. Press .

## 4 Connect your machine and install software

Select your preferred scanning method and choose your connection method.

### A Using your scanner with your computer or mobile device

Visit [setup.brother.com](http://setup.brother.com) to download and install Brother software.



**For Mac:** Visit [support.brother.com/mac](http://support.brother.com/mac) to download Brother software.

Follow the on-screen instructions to continue installation.

#### For Mobile Devices:

- Set up the connection manually.
- You can also connect to your machine if it is connected to your router/access point using a LAN cable. For more information, see the *Online User's Guide*.

### Finish

- When finished, restart your computer.
- To check for the latest firmware, visit [support.brother.com/up7](http://support.brother.com/up7).
  - If not successful, try to set up the connection manually.

For detailed scanning instructions, see the *Online User's Guide* at [support.brother.com/manuals](http://support.brother.com/manuals).

### B Using your scanner as a standalone device (ADS-3300W/ADS-4300N/ADS-4700W/ADS-4900W only)

Connect your machine to your network using a network cable (purchased separately) or via Wi-Fi®. You can set up your Wi-Fi connection either using the machine's control panel or using your computer.

#### Manual Wireless Setup (ADS-3300W/ADS-4700W/ADS-4900W only)

If you do not have a computer connected to the network or if you cannot connect your machine using your computer, try to set up the connection manually.

1. Press > [Find Wi-Fi Network] > [Yes].
2. Select the SSID (Network Name). Enter the Network Key (Password).

When the wireless setup is successful, the LCD displays [Connected].

If you cannot find your SSID or Network Key, ask your network administrator or wireless access point/router manufacturer.

#### NOTE

- If setup is not successful, restart your machine and the wireless access point/router, and then repeat these steps.
- If using a computer, go back to **A** to install software.

#### NOTE

If setup is not successful, visit [support.brother.com](http://support.brother.com) for FAQs, Troubleshooting, and manuals. For product specifications, see the *Online User's Guide*.

### LED Indications (ADS-3100/ADS-4300N only)

|  |          |
|--|----------|
|  | Off      |
|  | Lit      |
|  | Blinking |

| Machine Status |                         |
|----------------|-------------------------|
|                | Ready                   |
|                | Sleep (Blinking slowly) |

| Error Status |  |
|--------------|--|
|              | <ul style="list-style-type: none"> <li>• Document Jam</li> <li>• Pick Up Document Error</li> <li>• Front Cover Open</li> <li>• Multifeed Detection Error (ADS-4300N only)</li> <li>• Access Error</li> </ul> |
|              | <ul style="list-style-type: none"> <li>• Scheduled Maintenance Notification</li> <li>• Pick Up Roller Replacement Notification</li> </ul>  |

For more information about troubleshooting your machine, see the *Online User's Guide*.

# Product Safety Guide

Failure to follow these instructions may result in an increased risk of personal injury or damage to property, including through fire, electrical shock, burns, or suffocation.

## Symbols and conventions used in the documentation

The following symbols and conventions are used throughout the documentation.

### **WARNING**

**WARNING** indicates a potentially hazardous situation which, if not avoided, could result in death or serious injuries.

### **CAUTION**







**CAUTION** indicates a potentially hazardous situation which, if not avoided, may result in minor or moderate injuries.

### **IMPORTANT**

**IMPORTANT** indicates a potentially hazardous situation which, if not avoided, may result in damage to property or loss of product functionality.

### **NOTE**

Notes tell you how you should respond to a situation that may arise or give tips about how the operation works with other features.

-  Prohibition icons indicate actions that must not be performed.
-  This icon indicates that flammable sprays may not be used.
-  This icon indicates that organic solvents, alcohol, or other liquids may not be used.
-  Electrical Hazard icons alert you to possible electrical shock.
-  Fire Hazard icons alert you to the possibility of fire.
-  Unplug icons indicate that you should unplug the machine.

(ADS-3300W/ADS-4700W/ADS-4900W only)

Courier New                      Text in Courier New font  
identifies messages on the  
LCD of the machine.

Follow all warnings and instructions marked on the machine.

### **NOTE**

The illustrations in this guide show the ADS-4300N.

## Compilation and Publication

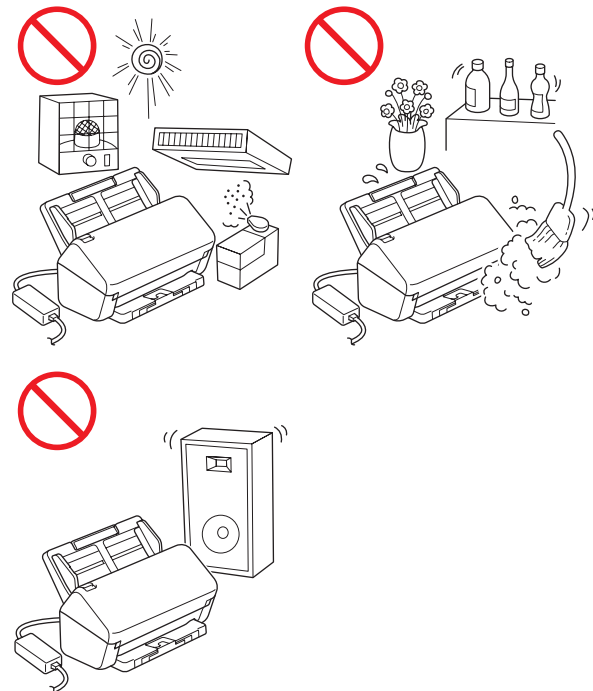
Under the supervision of Brother Industries, Ltd., this manual has been compiled and published, covering the latest product descriptions and specifications.

The contents of this manual and the specifications of this product are subject to change without notice.

Brother reserves the right to make changes without notice in the specifications and materials contained herein and shall not be responsible for any damages (including consequential) caused by reliance on the materials presented, including but not limited to typographical and other errors relating to the publication.

## Choosing a location

Place your machine and AC Adapter (hereinafter collectively referred to as "the unit") on a flat, level, stable surface that is free of vibration and shocks, such as a desk. Choose a location where the temperature remains between 41°F and 95°F (5°C and 35°C) and the humidity is between 20% to 80% (without condensation).



## WARNING



The unit should be connected to an AC power source within the range indicated on *Specifications* in the *Online User's Guide*. DO NOT connect it to a DC power source or inverter. Doing this might cause an electrical shock or a risk of fire. If you are not sure what kind of power source you have, contact a qualified electrician.

This product must be installed near an AC power outlet that is easily accessible. In case of an emergency, you must unplug the AC Adapter from the AC power outlet to shut off the power completely.

### IMPORTANT

- Brother cannot accept any financial or other responsibilities that may be the result of your use of this information, including direct, special or consequential damages. There are no warranties extended or granted by this document.
- This machine has been certified to comply with FCC standards, which are applied to the USA only.



DO NOT expose the unit to direct sunlight, excessive heat, open flames, corrosive gasses, moisture or dust.

DO NOT place the unit on a carpet or rug, as this will expose it to dust. Exposing the unit to dust may create a risk of an electrical short or fire. It may also damage the unit and/or render it inoperable.



DO NOT place the unit near heaters, air conditioners, electric fans, refrigerators, radiators, or water. Doing so may create the risk of a short circuit or fire should water come into contact with the unit (including condensation from heating, air conditioning, and/or ventilation equipment that may be sufficient to create a short circuit or fire).



DO NOT place the unit near chemicals or in a place where chemicals could be spilled on it. Should chemicals come into contact with the unit, there may be a risk of fire or electrical shock. In particular, organic solvents or liquids such as benzene, paint thinner, polish remover, or deodorizer may melt or dissolve the plastic cover and/or cables, resulting in a risk of fire or electrical shock. These or other chemicals may also cause the unit to malfunction or become discolored.



The product should be placed so as not to come into contact with any wall or other device. Otherwise, it could create a risk of overheating and/or fire. Clearance is needed between the product and the wall.

## CAUTION

Avoid placing the unit in a high-traffic area. If you must place it in a high-traffic area, ensure that the unit is in a safe location where it cannot be accidentally knocked over, which could cause injury to you or others and serious damage to the unit.

Ensure that cables and cords leading to the unit are secured so as not to pose a tripping hazard.

Make sure that no part of the unit protrudes from the desk or stand where the unit is located. Make sure that the unit is located on a flat, level, and stable surface free from vibration. Failure to observe these precautions could cause the unit to fall, causing injury to you or to others and serious damage to the unit.

### IMPORTANT

- DO NOT place your machine next to sources of interference, such as speakers or the base units of non-Brother cordless telephones. Doing so may interfere with the operation of the machine's electronic components.
- DO NOT connect the unit to an AC power outlet controlled by wall switches or automatic timers. Disruption of power can delete information from the machine's memory, and repeated cycling of the power can damage the unit.

## To use the unit safely

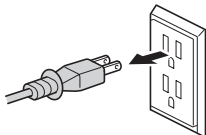
### WARNING

#### ELECTRICAL HAZARDS

Failure to follow the warnings in this section may create the risk of an electrical shock. In addition, you could create the risk of an electrical short, which may create the risk of a fire.



There are high-voltage electrodes inside the unit. Before you access the inside of the machine, including for routine maintenance such as cleaning, make sure you have unplugged the AC Adapter from the AC power outlet and that you have unplugged any Ethernet cables (Network models only) from the machine.



(Example for USA)



DO NOT push objects of any kind into the unit through slots or openings in the machine, as they may touch dangerous voltage points or short out parts.



DO NOT continue using the unit if it has been dropped or the machine has been damaged. Instead, unplug the unit from the power outlet and contact Brother Authorized Service Personnel.



If water, other liquids, or metal objects get inside the unit, immediately unplug the unit from the AC power outlet and contact Brother Authorized Service Personnel.



#### Power Cord Safety:

- Use only the power cord supplied with this product.
- DO NOT allow anything to rest on the power cord.
- DO NOT place the unit where people can walk on the cord.
- DO NOT place the unit in a position where the cord is stretched or strain is otherwise put on the cord, as it may become worn or frayed.

- DO NOT use the unit or handle the cord if the cord has become worn or frayed. If the cord has become worn or frayed, unplug the unit but DO NOT touch the damaged/frayed part.
- Brother strongly recommends that you DO NOT use any type of extension cord.

#### AC Adapter Safety



Only use the supplied AC Adapter with the unit. Only plug the AC Adapter into a power outlet with voltage that is within the range indicated on *Specifications* in the *Online User's Guide*. Failure to do so may result in injury to yourself or others, or damage to the machine or other property. Brother does not assume any responsibility for any damage resulting from using an AC Adapter other than the one specified.



DO NOT use a damaged AC Adapter.



DO NOT place heavy objects on, damage, or modify the AC Adapter.



DO NOT forcibly bend or pull the cord of the AC Adapter.



DO NOT drop, hit, or otherwise damage the AC Adapter.



DO NOT use or touch the unit during a thunderstorm when the AC Adapter is plugged in. There may be a remote risk of electrical shock from lightning when the machine is used during a thunderstorm.

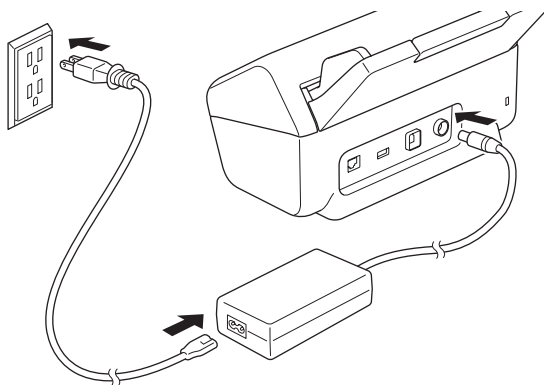


When disconnecting the AC Adapter from the machine or from the power outlet, always hold the connector, not the cable, and pull firmly. Failure to do so may result in exposed or broken power cord wires and/or create a risk of fire, or electrical shock.

# Product Safety Guide



Make sure that one end of the AC Adapter is firmly plugged into a standard power outlet and the other end is firmly plugged into the adapter block. Do not use an outlet that is loose. If the AC Adapter is not completely plugged into the power outlet and adapter block, the adapter may become hot and/or catch fire.



(Example for USA)



DO NOT exceed the rated input or output listed on the rated label on the AC Adapter.



DO NOT connect the supplied AC Adapter to other products.

## FIRE HAZARDS

Failure to follow the warnings in this section may create the risk of a fire.



When cleaning the inside or outside of the unit, DO NOT use flammable substances, any type of spray, any organic solvent, alcohol, ammonia, or any liquid that contains alcohol or ammonia. Doing this may cause a risk of fire or electrical shock.



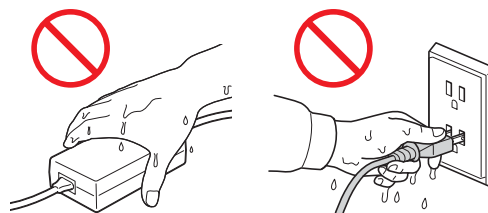
Do not disassemble or modify the unit, otherwise fire or electrical shock may result. If the unit requires repair, contact Brother Authorized Service Personnel.



If the unit becomes hot, releases smoke, or generates any strong smells, immediately unplug the unit from the power outlet and call Brother Customer Service.



DO NOT touch the AC Adapter or handle the plug with wet hands.



(Example for USA)

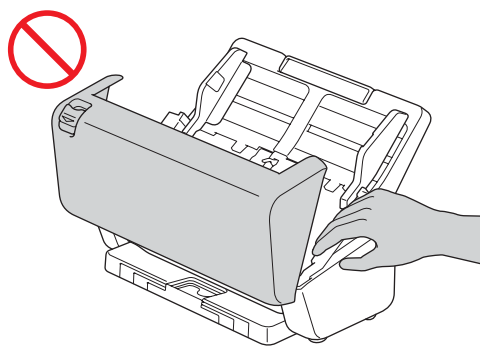
## CAUTION

DO NOT put pressure or weight on the unit or use it for any purpose beyond its intended purpose.

Wait until pages have exited the machine before taking them out, or you could cause injury to your fingers by trapping them in a roller.

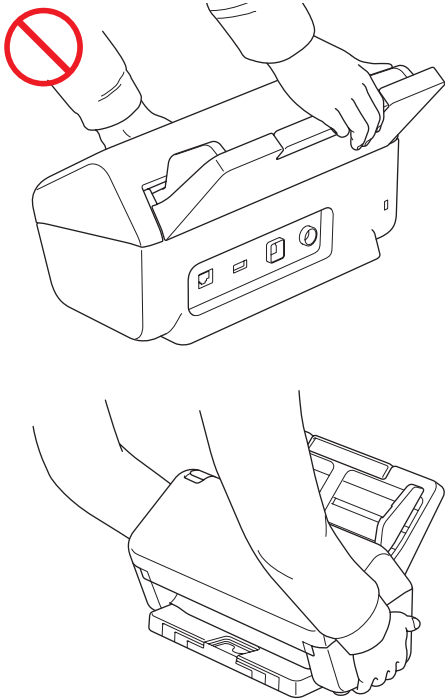
To avoid cutting yourself, do not slide or scrape your hand or fingers along the edge of the Carrier Sheet (not included).

Some areas of the machine can cause injury if the Cover (shaded area shown) is closed with force. Be careful when placing your hand in or near the shaded area.



# Product Safety Guide

DO NOT carry the machine by holding the Automatic Document Feeder (ADF). Doing this may cause the Automatic Document Feeder (ADF) to detach from the machine. Only carry the machine by placing your hands under the entire machine.



When multiple devices, including this product, are connected to a computer using USB cables, you may feel an electric charge when you touch metal parts of the product.

If you do not intend to use the unit for an extended period of time, disconnect the AC Adapter from the power outlet.

DO NOT swing the AC Adapter around or play with it. Doing so may result in injury to yourself or others.

## WARNING

Use caution when operating the machine to prevent clothing (particularly sleeves, neckties, etc.), hair, or accessories from being drawn into the machine, otherwise injury may result. In the event that an object is drawn into the machine, immediately disconnect the machine from the power source.

## IMPORTANT

- Disruption of power can wipe out information in the machine's memory.
- DO NOT put objects on top of the unit.
- If the machine does not operate normally when the operating instructions are followed, adjust only those controls that are covered by the operating instructions. Improper adjustment of other controls may result in damage or minor exposure to electromagnetic waves and will often require extensive work by a qualified technician to restore the machine to normal operation.
- A distinct change in the machine's performance may indicate a need for service.
- (Touchscreen models only)  
DO NOT touch the touchscreen while the machine is booting up. Doing this may cause an error.

## Important Safety Instructions

DO NOT attempt to service the unit yourself because disassembling the unit may expose you to dangerous voltage points and other risks and may void your warranty. Refer all servicing to a Brother Authorized Service Center. For the location of your nearest Brother Authorized Service Center, please call:

In USA: 1-877-BROTHER (1-877-276-8437)

## Regulation

### WARNING

**This product must be installed near an AC power outlet that is easily accessible. In case of an emergency, you must unplug the AC Adapter from the AC power outlet to shut off the power completely.**

## IMPORTANT

- Brother cannot accept any financial or other responsibilities that may be the result of your use of this information, including direct, special or consequential damages. There are no warranties extended or granted by this document.
- This machine has been certified to comply with FCC standards, which are applied to the USA only.

## Federal Communications Commission (FCC) Supplier's Declaration of Conformity (USA only)

Responsible Party: Brother International Corporation  
200 Crossing Boulevard  
Bridgewater, NJ 08807-0911 USA  
TEL: (908) 704-1700

declares, that the products

Product Name: ADS-3100/ADS-3300W/ADS-4300N/  
ADS-4700W/ADS-4900W

comply with Part 15 of the FCC Rules. Operation is subject to the following two conditions: (1) This device may not cause harmful interference, and (2) this device must accept any interference received, including interference that may cause undesired operation.

This equipment has been tested and found to comply with the limits for a Class B digital device, pursuant to Part 15 of the FCC Rules. These limits are designed to provide reasonable protection against harmful interference in a residential installation. This equipment generates, uses, and can radiate radio frequency energy and, if not installed and used in accordance with the instructions, may cause harmful interference to radio communications. However, there is no guarantee that interference will not occur in a particular installation. If this equipment does cause harmful interference to radio or television reception, which can be determined by turning the equipment off and on, the user is encouraged to try to correct the interference by one or more of the following measures:

- Reorient or relocate the receiving antenna.
- Increase the separation between the equipment and receiver.
- Connect the equipment to an outlet on a circuit different from that to which the receiver is connected.
- Consult with an experienced radio/TV technician for help.

(Wireless network models only)

- This transmitter must not be co-located or operated in conjunction with any other antenna or transmitter.

### IMPORTANT

- Changes or modifications not expressly approved by Brother Industries, Ltd. could void the user's authority to operate the equipment.
- A shielded interface cable should be used to ensure compliance with the limits for a Class B digital device.

## Compliance with FCC requirement 15.407(c) (ADS-4900W only)

Data transmission is always initiated by software, which is the passed down through the MAC, through the digital and analog baseband, and finally to the RF chip. Several special packets are initiated by the MAC. These are the only ways the digital baseband portion will turn on the RF transmitter, which it then turns off at the end of the packet.

Therefore, the transmitter will be on only while one of the aforementioned packets is being transmitted. In other words, this device automatically discontinues transmission in case of either absence of information to transmit or operational failure.

Frequency Tolerance:  $\pm 20$ ppm

## Industry Canada Compliance Statement (Canada only)

This device complies with Industry Canada's licence-exempt RSSs. Operation is subject to the following two conditions: (1) this device may not cause interference, and (2) this device must accept any interference, including interference that may cause undesired operation of the device.

Le présent appareil est conforme aux CNR d'Industrie Canada applicables aux appareils radio exempts de licence. L'exploitation est autorisée aux deux conditions suivantes : (1) l'appareil ne doit pas produire de brouillage, et (2) l'utilisateur de l'appareil doit accepter tout brouillage radioélectrique subi, même si le brouillage est susceptible d'en compromettre le fonctionnement.

For indoor use only (5150 MHz - 5350 MHz)  
(ADS-4900W only)

Pour usage intérieur seulement (5150 MHz - 5350 MHz)  
(ADS-4900W uniquement)

## For use in the USA or Canada only

These machines are made for use in the USA and Canada only. We cannot recommend using them overseas because the power requirements of your machine may not be compatible with the power available in foreign countries. Using USA or Canada models overseas is at your own risk and may void your warranty.



## LAN connection (Models with wired LAN function only)

### **!** CAUTION

DO NOT connect this product to a LAN connection that is subject to over-voltages.

## International ENERGY STAR® Qualification Statement (USA and Canada only)

The purpose of the International ENERGY STAR® Program is to promote the development and popularization of energy-efficient equipment.

As an ENERGY STAR® Partner, Brother Industries, Ltd. has determined that this product meets the ENERGY STAR® specifications for energy efficiency.



## RF Exposure Notice (USA or Canada only) (Wireless models only)

This equipment complies with FCC/IC radiation exposure limits set forth for an uncontrolled environment and meets the FCC radio frequency (RF) Exposure Guidelines and RSS-102 of the IC radio frequency (RF) Exposure rules. This equipment should be installed and operated keeping the radiator at least 20 cm or more away from person's body.

Cet équipement est conforme aux limites d'exposition aux rayonnements énoncées pour un environnement non contrôlé et respecte les lignes directrices d'exposition aux fréquences radioélectriques (RF) de la FCC et les règles d'exposition aux fréquences radioélectriques (RF) CNR-102 de l'IC. Cet équipement doit être installé et utilisé en gardant une distance de 20 cm ou plus entre le radiateur et le corps humain.

## Wireless connection (Mexico only) (Wireless models only)

The operation of this equipment is subject to the following two conditions:

(1) it is possible that this equipment or device may not cause harmful interference, and (2) this equipment or device must accept any interference, including interference that may cause undesired operation.

## Trademarks

Mac is a trademark of Apple Inc., registered in the U.S. and other countries.

Wi-Fi is a registered trademark of Wi-Fi Alliance®.

Each company whose software title is mentioned in this manual has a Software License Agreement specific to its proprietary programs.

**Any trade names and product names of companies appearing on Brother products, related documents and any other materials are all trademarks or registered trademarks of those respective companies.**

### Copyright and License

© 2021 Brother Industries, Ltd. All rights reserved.

## Legal Limitations for Copying or Scanning

Color reproductions of certain documents are illegal and may result in either criminal or civil liability.

The listing below is intended to be a guide rather than a complete listing of every possible prohibition. In case of doubt, we suggest that you consult with the appropriate authority or advisor with regard to the specific document.

The following documents issued by the United States/Canadian Government or any of its Agencies, States, Territories, or Provinces may not be copied or scanned.

- Money
- Bonds or other certificates of indebtedness
- Certificates of Deposit
- Internal Revenue Stamps (canceled or uncanceled)
- Selective Service or draft papers
- Passports
- United States/Canadian Postage Stamps (canceled or uncanceled)
- Food Stamps
- Immigration Papers
- Checks or drafts drawn by Governmental agencies
- Identifying badges or insignias
- Licenses and Certificates of Title to motor vehicles, under certain State/Provincial law

Copying or Scanning copyrighted works may be regulated by Federal, State, or local law. For more information, consult an appropriate authority or advisor.

## To request a printed version of the Online User's Guide, please contact us at:

### Chile and Bolivia:

Tel: 800-541-000 / Email: [info@brother.cl](mailto:info@brother.cl)

### Peru:

Tel: 0800-00-066 / Email: [info@brother.com.pe](mailto:info@brother.com.pe)

### Mexico:

Tel: 01-800-759-6000 / 01-800-759-8000

URL: [www.brother.com.mx](http://www.brother.com.mx)

### Argentina, Paraguay and Uruguay:

In Argentina: [www.brother.com.ar](http://www.brother.com.ar)

In Paraguay: [www.brother.com.py](http://www.brother.com.py)

In Uruguay: [www.brother.com.uy](http://www.brother.com.uy)

### Other countries in Latin America and the Caribbean:

Tel: 888-800-7303\* (Eastern Standard Time, USA.)

Email: [CALASales@brother.com](mailto:CALASales@brother.com)

\* AT&T USADirect® Service is not available in all locations. Calling this number may incur charges. Contact your local telephone company for more information.

## Disclaimer

Brother disclaims any warranties with respect to avoidance, mitigation or non-occurrence of any breakdowns, malfunctions, system crashes, hang-ups, virus infections, damage and disappearances of data, and any other kind of errors by using this product. AS LONG AS PERMITTED BY APPLICABLE LAWS, BROTHER WILL NOT BE LIABLE FOR ANY LOST REVENUES OR INDIRECT, SPECIAL, INCIDENTAL, CONSEQUENTIAL, EXEMPLARY, OR PUNITIVE DAMAGES OF THE CUSTOMERS OR ANY OTHER THIRD PARTY.

# brother

Visit us on the World Wide Web  
[www.brother.com](http://www.brother.com)

These machines are approved for use in the country of purchase only.  
Local Brother companies or their dealers will support only machines purchased  
in their own countries.



[www.brotherearth.com](http://www.brotherearth.com)

Month of publication: 9/2021

USA Version 0