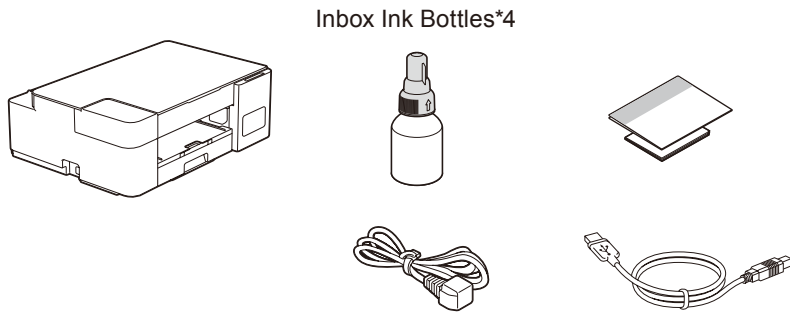


1 Unpack the machine and check the components



Remove the protective tape and the film covering the machine.

NOTE

- Save all packing materials and the box in case you must ship your machine.
- We recommend using a USB 2.0 cable (Type A/B) that is no more than 2 meters long.

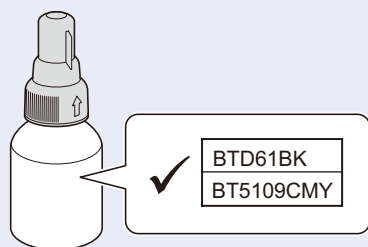
Operation Videos

www.95105369.com



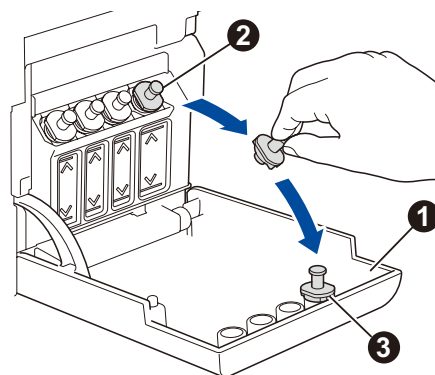
Installation
& Using
Videos

2 Fill the ink tanks with inbox ink

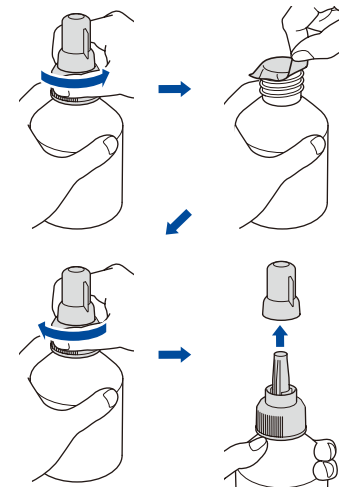


IMPORTANT

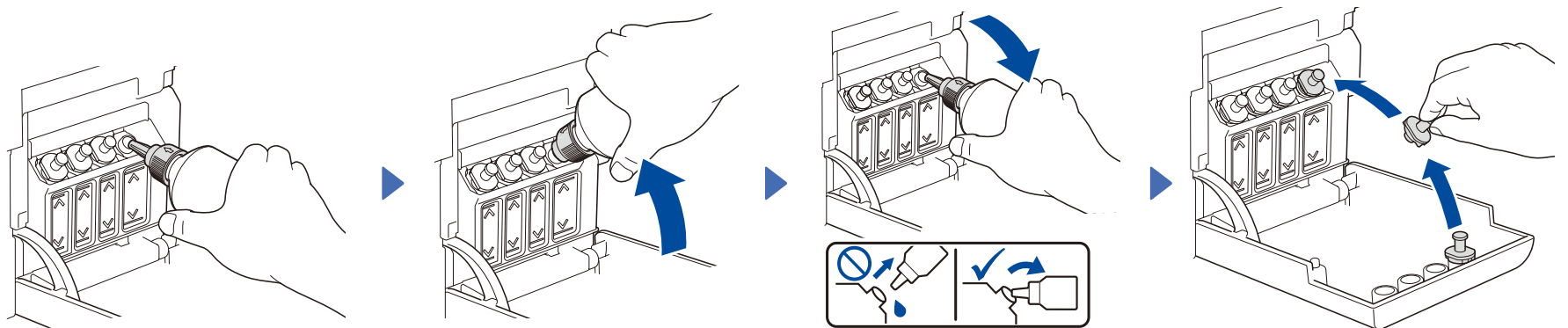
Check the ink bottle model name on the label. Using the incorrect ink may cause damage to the machine.



Open the ink tank cover 1, remove the cap 2, and place it on the back of the cover 3.



Remove the film and tighten the cap firmly.



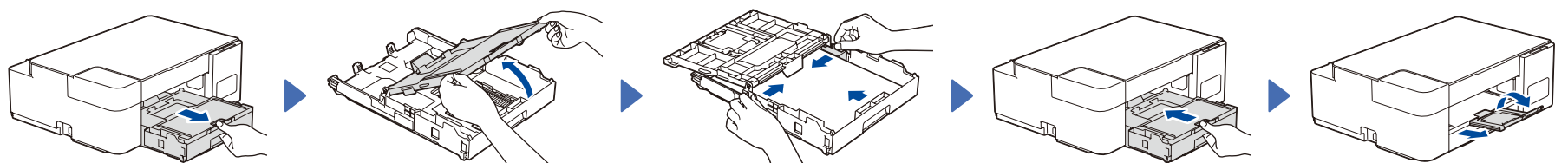
Remove the nozzle cap and insert the bottle nozzle firmly into the ink tank so that the ink does not spill.

The bottle is self-standing and the ink fills automatically until the bottle is empty. To fill the ink tank faster, squeeze the bottle on both sides.

When finished, remove the bottle, pointing the nozzle upward so the ink does not spill.

Replace the ink tank cap. Repeat step 2 for the other ink tanks, and then close the ink tank cover.

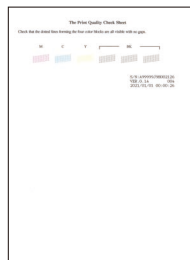
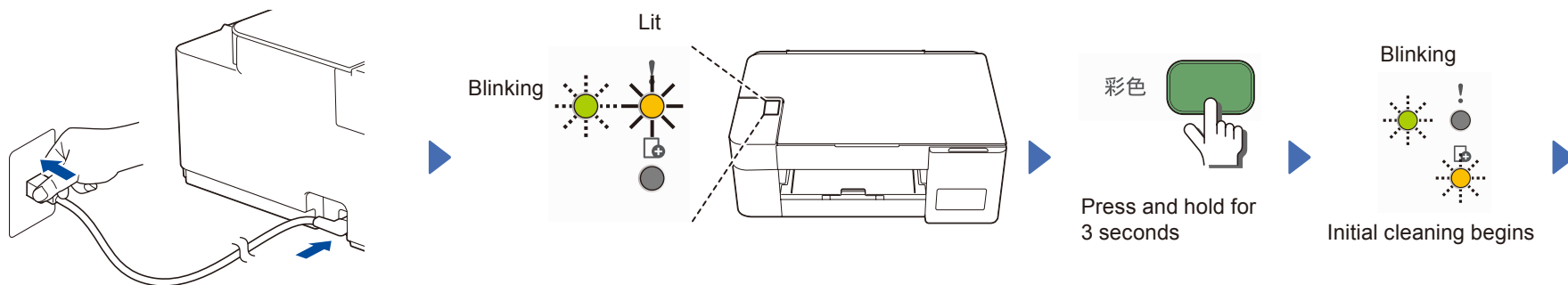
3 Load plain A4 paper in the paper tray



Fan the paper well.

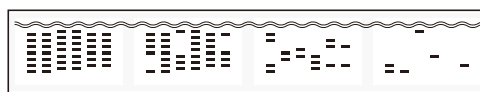


4 Start the initial cleaning



The machine prints the Print Quality Check Sheet.

Check the Print Quality Check Sheet.



Good ← → Poor

To improve the print quality, clean the print head. See *Improve Print Quality* in this guide.

5 Charge printable pages

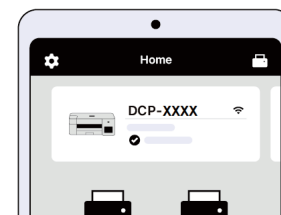
Make sure you have installed WeChat to your mobile device.

1. Visit setup.brother.com and install **Brother Mobile Connect** to use your machine and charge printable pages from your mobile device.



2. Start **Brother Mobile Connect** on your mobile device.

3. Follow the on-screen instructions to register your machine to **Brother Mobile Connect**. When the registration is completed, the Home screen of **Brother Mobile Connect** displays your model name as shown on the right.



If the registration fails, try to set up the connection manually. Visit FAQs and troubleshooting tips, search for the keyword "WPS".

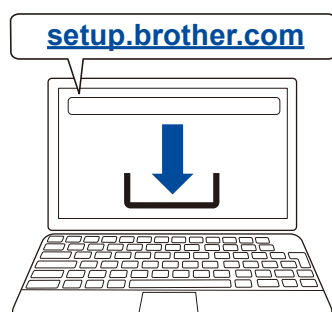
www.95105369.com



FAQs

4. Tap **Charge Function Settings** on the Home screen.
5. Follow the on-screen instructions to add an administrator's account for charging.
6. Charge the number of printable pages using WeChat Mini Program for charging. The print feature becomes available after charging.

6 Connect with your PC (if necessary)



Visit setup.brother.com to download and install Brother software with your computer.

Follow the on-screen instructions and prompts.

Setup Complete

Connect with WeChat

Your machine can print through an applet of WeChat, which is called "兄弟畅享印". "兄弟畅享印" lets you wirelessly print photos and documents without the need to install an app or a driver.

Binding your printer before using WeChat print function for the first time. Please scan the two-dimensional code on the right for operation instructions.



Reference Guide



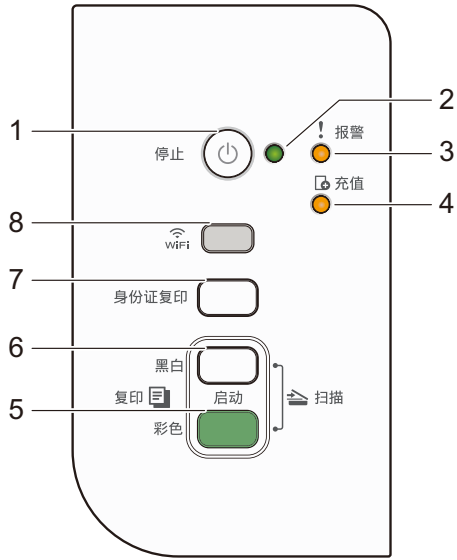
For detailed machine operation including scanning and troubleshooting tips, see the *Online User's Guide*:

www.95105369.com



Using & Troubleshooting

Control Panel Overview



1	Power / Stop button	5	Color Start button
2	Power LED	6	Mono Start button
3	Warning LED	7	Copy Shortcut button
4	Charge LED	8	Wi-Fi button / LED

Press to turn the machine on. Press and hold to turn the machine off.

Machine Settings

To change machine settings, access Web Based Management using either **Brother Mobile Connect** on your mobile device or **Brother iPrint&Scan** on your computer.

Important Notice for Network Security: The default password to manage this machine's settings is located on the back of the machine and marked "Pwd". We recommend immediately changing the default password to protect your machine from unauthorized access. See the *Online User's Guide*.

LED Indications

Lit	Blinking	• Standby	• Busy (blinking) • Sleep (blinking slowly and faintly)	• Wrong paper size
<ul style="list-style-type: none"> Initial cleaning: After filling the ink for the first time, press and hold Color Start for 3 seconds. Check ink level: See <i>Check Ink Volume</i> in this guide. When finished, press Stop. 	<ul style="list-style-type: none"> Paper jam (blinking simultaneously): See <i>Remove Jammed Paper</i> in this guide. 			
<ul style="list-style-type: none"> No paper loaded: Load paper in the tray, and then press Mono Start or Color Start. Tray not detected: Slowly push the paper tray completely into the machine. 	<ul style="list-style-type: none"> Printable pages charge near empty 	<ul style="list-style-type: none"> Printable pages charge empty 		
<ul style="list-style-type: none"> Out of memory 	<ul style="list-style-type: none"> Machine error 	For solutions, see the <i>Online User's Guide</i> : www.95105369.com		
Wi-Fi	• Off	• Connecting	• Connected	

Copy

Normal Copy

1. Load the paper in the paper tray.
2. Place the document in the lower right corner of the scanner glass.
3. Press **Mono Start** or **Color Start**.

Multiple Copy

Press **Mono Start** or **Color Start** once for each additional copy.

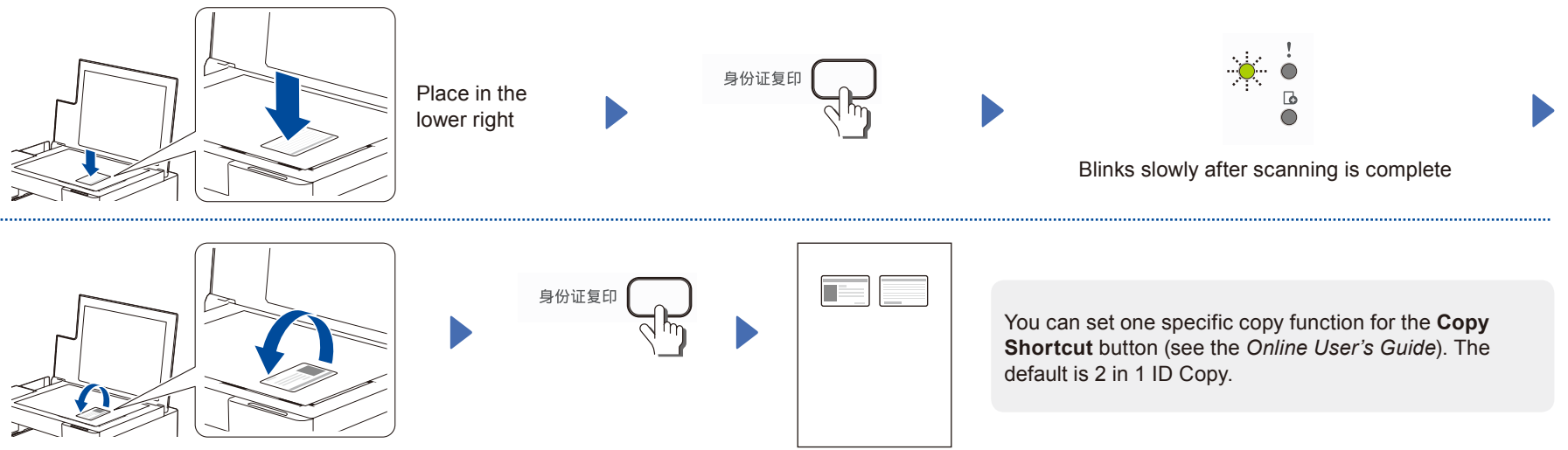
Best Quality Copy

Press and hold **Mono Start** or **Color Start** for two seconds.

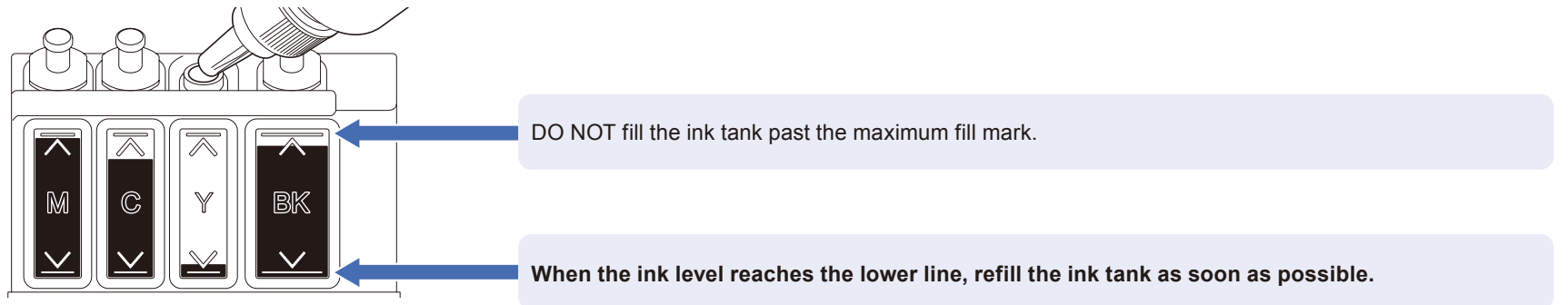
Other Copy

Use **Brother Mobile Connect** on your mobile device or **Brother iPrint&Scan** on your computer. See the *Online User's Guide*.

2 in 1 ID Copy



Check Ink Volume



Improve Print Quality

Clean the print head.



If the print quality does not improve with normal cleaning, try the Special cleaning (Note that this operation will consume a large amount of ink).

1. Make sure all ink tanks are at least half-full.
2. Use the procedure above, but hold **Mono Start** and **Color Start** simultaneously for five seconds while the **Charge LED** is blinking.

Remove Jammed Paper

