



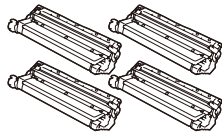
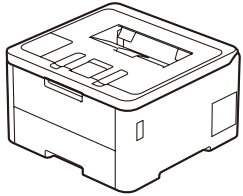
Operation Videos:  
[www.95105369.com](http://www.95105369.com)



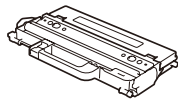
Installation & Using Videos

EN

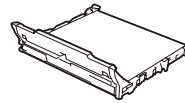
## Unpack the machine and check the components



**Toner Cartridge and Drum Unit Assemblies\***  
(Black, Cyan, Magenta, and Yellow)



**Waste Toner Box\***



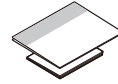
**Belt Unit\***



**AC Power Cord**



**USB Interface Cable**



**Quick Setup Guide  
Product Safety Guide**

\* Installed in the machine

**NOTE:**

- Use the appropriate interface cable for the connection you want to use. (Network cable is not a standard accessory.)

- **USB cable**

We recommend using a USB 2.0 cable (Type A/B) that is no more than 2 metres long.

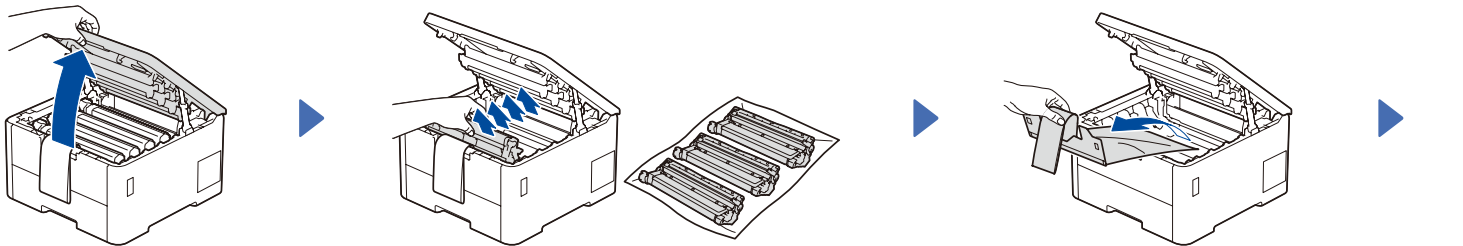
- **Network cable (HL-L3288CDW)**

Use a straight-through Category 5 (or greater) twisted-pair cable.

- The illustrations in this *Quick Setup Guide* show the HL-L3228CDW.

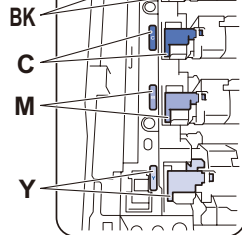
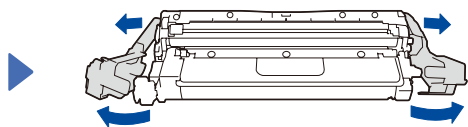
## 1 Remove the packing materials and re-install the toner cartridge and drum unit assemblies

Remove all the blue packing tape.

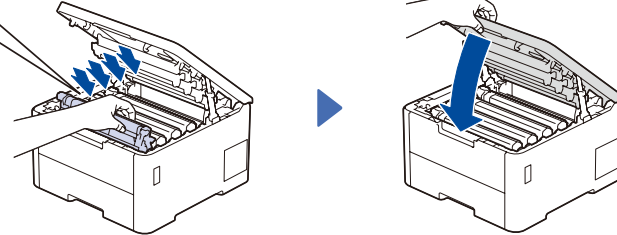


Remove the orange parts from each cartridge.

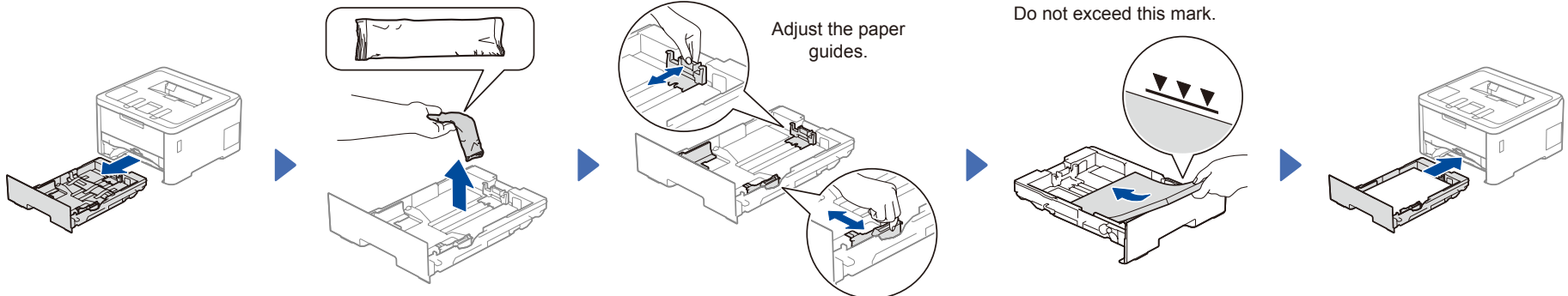
x4



Push firmly.

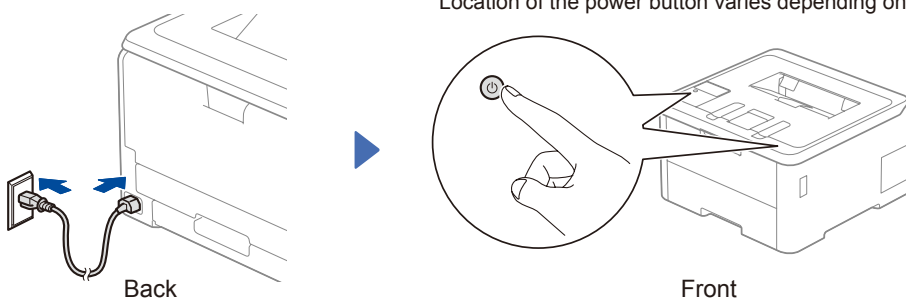


## 2 Load paper in the paper tray



## 3 Connect the power cord and turn the machine on

Location of the power button varies depending on the model.



Back

Front

## 4 Connect your computer or mobile device to your machine

Follow these steps to complete the setup using one of the connection types available on your machine.

Visit [setup.brother.com](http://setup.brother.com) to download and install Brother software.

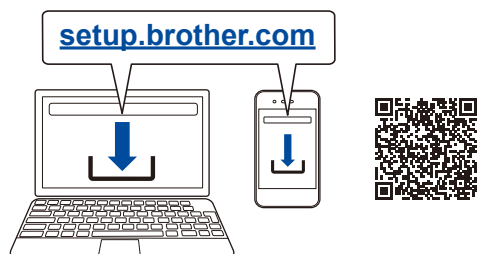
▶ Follow the on-screen instructions and prompts. ▶

### Setup Finished

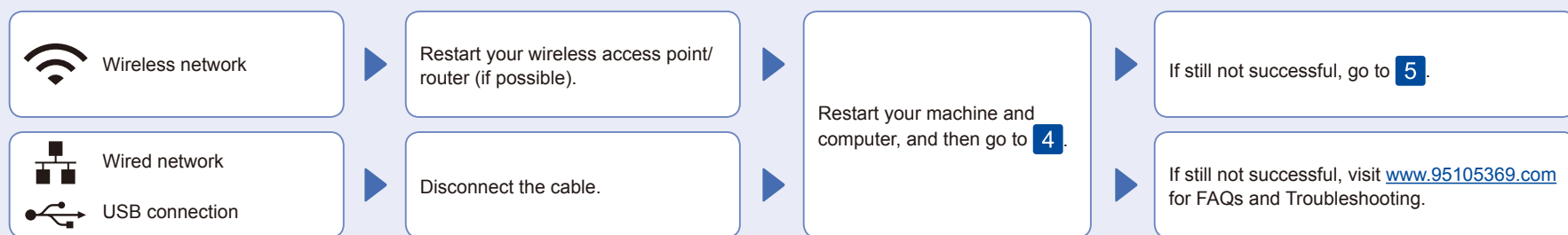
You can now print using your machine. To check for the latest firmware, visit [support.brother.com/up7](http://support.brother.com/up7).

#### Important Notice for Network Security:

The default password to manage this machine's settings is located on the back of the machine and marked "Pwd". We recommend immediately changing the default password to protect your machine from unauthorised access.



### Can't Connect? Check the following:

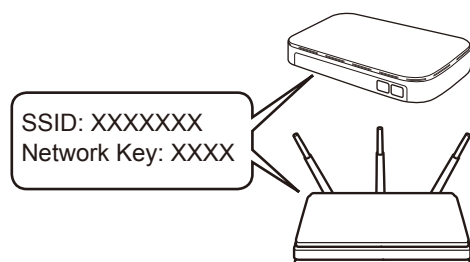


## 5 Manual wireless setup (Wireless models)

If the wireless setup is not successful, try to set up the connection manually.

Find your SSID (Network Name) and Network Key (Password) on your wireless access point/router and write them in the table provided below.

SSID (Network Name)	
Network Key (Password)	



#### ■ For LCD models

To select menu options, press ▲ or ▼, and then press **OK** to confirm.  
 Select [Network] > [WLAN (Wi-Fi)] > [Find Network].  
 Follow the LCD instructions.

#### ■ For Touchscreen models

Press > [Find Wi-Fi Network].  
 Follow the Touchscreen instructions.

Select the SSID (Network Name) for your access point/router and enter the Network Key (Password).

#### • For LCD models

Press and hold ▲/▼ to select one of the following characters:  
 0123456789abcdefghijklmnopqrstuvwxyz  
 Z(space)!"#%&'()\*+,-./:;<=>@[ ]^\_`{|}~

▶ Go to 4 to install software.

When the wireless setup is successful, the Touchscreen/LCD displays [Connected].

If setup is not successful, restart your Brother machine and your wireless access point/router, and repeat 5.

If you cannot find this information, ask your network administrator or wireless access point/router manufacturer.

