

# Product Safety Guide

**HL-L5210DN/HL-L5210DW/HL-L5215DN/HL-L6210DW/HL-L6410DN/HL-L6415DN/DCP-L5510DW/  
MFC-L5710DN/MFC-L5715DN/MFC-L5710DW/MFC-L6710DW/MFC-L6910DN/MFC-L6915DN/  
MFC-EX910**

Read this guide before attempting to operate the product, or before attempting any maintenance, and ensure that you follow all warnings and instructions marked on the product. Brother shall not be liable for the damage caused where the product owner has failed to follow the instructions set out in this guide or on the product.

For more detailed instructions, information, and product specifications, see the *Online User's Guide* at [support.brother.com/manuals](http://support.brother.com/manuals).

## Symbols and Conventions Used in the Documentation

The following symbols and conventions are used throughout the documentation.

### WARNING

WARNING indicates a potentially hazardous situation which, if not avoided, could result in death or serious injuries.

### CAUTION

CAUTION indicates a potentially hazardous situation which, if not avoided, may result in minor or moderate injuries.

### IMPORTANT

IMPORTANT indicates a potentially hazardous situation which, if not avoided, may result in damage to property or loss of product functionality.



Hot Surface icons warn you not to touch product parts that are hot.



Prohibition icons indicate actions that must not be performed.



Electrical Hazard icons alert you to the possibility of an electric shock.



Fire Hazard icons alert you to the possibility of a fire.



Explosion Hazard icons alert you to the possibility of an explosion.



This icon alerts you to the areas that contain moving parts.

**Bold** Bold typeface identifies specific keys on the product's control panel or on the computer screen.

*Italics* Italicised style emphasises an important point or refers you to a related topic.

*Courier New* Text in Courier New font identifies messages on the LCD of the product.

## Compilation and Publication Notice

Not all models are available in all countries.

In this guide, the illustrations of the following models are used unless otherwise specified:

HL-L6415DN

This product's manuals have been compiled and published to provide the latest product safety information at the time of

publication. The information contained in these manuals may be subject to change.

For the latest manuals, visit [support.brother.com](http://support.brother.com).

©2022 Brother Industries, Ltd. All rights reserved.

## Choose a Safe Location for Your Product

### WARNING



- Choose a location where the temperature remains between 10°C and 32.5°C, the humidity is between 20% and 80%, and where there is no condensation.
- DO NOT place the product near heaters, air conditioners, electrical fans, refrigerators, or water.
- DO NOT expose the product to direct sunlight, excessive heat, open flames, corrosive gasses, moisture, or dust.
- DO NOT place the product near chemicals or in a place where chemicals could be spilled on it. In particular, organic solvents or liquids such as benzene, paint thinner, polish remover, or deodoriser may melt or dissolve the plastic cover and/or cables. These or other chemicals may cause the product to malfunction or become discoloured.



Do not install or use in areas where explosive or electrically conductive dusts are generated.



Do not obstruct any slots or openings to ensure efficient ventilation and reduce the risk of overheating or fire.



- Keep the following clearance around the product:  
**Products without the scanning function**  
Top: 150 mm  
Rear: 150 mm  
Sides: 150 mm  
**Products with the scanning function**  
Top: 300 mm  
Rear: 150 mm  
Sides: 150 mm
- DO NOT place this product near a radiator or heater.
- Make sure you install the product in a well-ventilated area.

Make sure you place this product on a stable and level surface free from vibration and shocks. The product is

heavy and may fall, causing injury to you or others and serious damage to the product.

### ⚠ CAUTION

- Install the product near a telephone socket (models with the fax function only) and a standard earthed electrical socket.
- Install the product in a safe location where it cannot be accidentally knocked over.
- Ensure that cables and cords are secured so as not to pose a tripping hazard.
- DO NOT place heavy objects on the product.
- DO NOT place any objects around the product that may block access to the electrical socket. It is important that the product can be unplugged whenever needed.
- This product emits some chemical substances during printing, and additionally if used for prolonged periods or in poorly ventilated areas may cause the emission of odorous gases such as ozone. Install the product in a well-ventilated area for optimum performance and comfort.

### IMPORTANT

- DO NOT place your product next to devices that contain magnets or generate magnetic fields. Doing so may interfere with the operation of the product, causing print quality problems.
- DO NOT place your product next to sources of interference, such as speakers or the base units of cordless telephones. Doing so may interfere with the operation of the product's electronic components.

### Connect the Product Safely

#### ⚠ WARNING



- There are high-voltage electrodes inside the product. Before cleaning or other routine maintenance of your product, disconnect the telephone line cord first, and then unplug the power cord and disconnect all other cables.
- Always make sure the plug is fully inserted. DO NOT use the product if the power cord has become worn or frayed.
- DO NOT drop any metal objects or any type of liquid on the product's power plug.
- Connect this product to an AC power source within the range shown on your machine's rating label. DO NOT connect it to a DC power source, inverter or UPS (uninterruptible power supply). If you are not sure what kind of power source you have, contact a qualified electrician.



DO NOT handle the plug with wet hands.



To prevent the accumulation of dust, unplug the power plug regularly to clean it. Use a dry cloth to clean the base of the plug pins and between the pins.

### Use the Product Safely

#### ⚠ WARNING



- DO NOT dismantle this product.
- DO NOT attempt to service this product yourself. Opening or removing covers may expose you to dangerous voltage points and other risks and may void your warranty. Refer all servicing to Brother customer service or your local Brother dealer.

- If the product has been dropped or the casing has been damaged, there may be the possibility of an electric shock. Unplug the product from the electric socket and contact Brother customer service or your local Brother dealer.
- If water, other liquids, or metal objects get inside the product, immediately unplug the product from the electrical socket and contact Brother customer service or your local Brother dealer.
- If the product becomes unusually hot, releases smoke, or generates any strong smells, immediately unplug the product from the electrical socket. Contact Brother customer service or your local Brother dealer.

#### Power Cord Safety

- This product is equipped with an earthed plug. This plug will only fit into an earthed electrical socket. This is a safety feature. If you are unable to insert the plug into the socket, ask your electrician to replace your obsolete socket.
- DO NOT allow anything to rest on the power cord.
- DO NOT place this product where others might step on the cord.
- DO NOT place this product in a position where the cord is stretched as it may become worn or frayed.
- DO NOT use the product or handle the cord if the cord has become worn or frayed. If unplugging your product, DO NOT touch the damaged/frayed part.
- DO NOT pull on the middle of the power cord; pulling on the middle may cause the cord to separate from the plug.
- DO NOT use unsupported hardware. Cables must meet the cable specifications described in the *Specifications* chapter of the *Online User's Guide*.
- Brother strongly recommends that you DO NOT use any type of extension cord.
- If the power cord is provided with this product, use ONLY the provided cord. Installation must be performed correctly as described in the *Quick Setup Guide*.



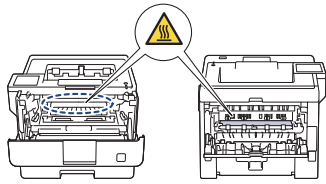
- DO NOT use or install this product during a thunderstorm.
- (Models with the fax function only) Use caution when installing or modifying telephone lines. Never touch telephone wires or terminals that are not insulated unless the telephone line has been unplugged from the wall socket. Never install a telephone wall socket in a location that is wet or may become wet.



- DO NOT attempt to operate this product when a paper jam or stray pieces of paper are inside the product. Prolonged contact of paper with the fuser unit could cause a fire.
- DO NOT use a vacuum cleaner to clean up scattered toner. Carefully clean the toner dust with a dry, lint-free soft cloth, and dispose of it according to local regulations.



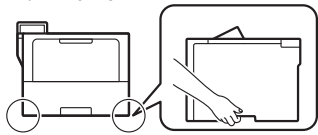
Immediately after use, some internal parts of the product will be extremely hot. Wait at least 10 minutes for the product to cool down before you touch the internal parts.



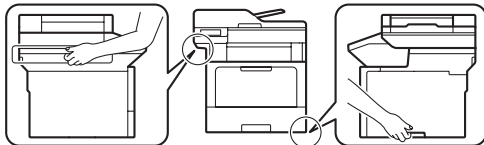
DO NOT use flammable substances, any type of spray, or an organic solvent/liquid containing alcohol or ammonia to clean the inside or outside of the product. Instead, use only a dry, lint-free cloth. For instructions on how to clean the product, see the *Online User's Guide*.

- (Models with the Wireless LAN function only)  
DO NOT use the product near any medical electrical equipment. The radio waves emitted from the product may affect medical electrical equipment and cause a malfunction, which may result in accident or injury.
- For users with pacemakers: (Models with the Wireless LAN function only)  
This product generates a weak magnetic field. If you feel anything wrong with the operation of your pacemaker when near the product, move away from the product and consult a doctor immediately.

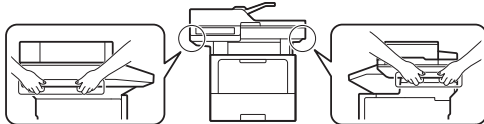
- Plastic bags are used in the packing of this product. Plastic bags are not toys. To avoid the danger of suffocation, keep these bags away from babies and children, and dispose of them correctly.
- If you use a Lower Tray/optional output tray, DO NOT carry the product with the Lower Tray/optional output tray as you may be injured or cause damage to the product because it is not attached to the Lower Tray/optional output tray.
- When you move the product, carry the product as shown in the illustration.  
HL-L5210DN/HL-L5210DW/HL-L5215DN/HL-L6210DW/HL-L6410DN/HL-L6415DN:



DCP-L5510DW/MFC-L5710DN/MFC-L5715DN/  
MFC-L5710DW:



MFC-L6710DW/MFC-L6910DN/MFC-L6915DN/  
MFC-EX910:



- (MFC-L6710DW/MFC-L6910DN/MFC-L6915DN/  
MFC-EX910)  
To prevent possible injuries, at least two people should lift the product by holding it from the front and back.



Keep toner cartridges out of the reach of children. If toner dust is swallowed, consult a doctor immediately and refer

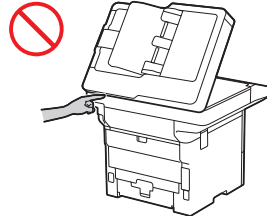
to the Safety Data Sheets (SDS) at [sds.brother.co.jp/sdsapp/index.html](http://sds.brother.co.jp/sdsapp/index.html).

## ⚠ CAUTION

- DO NOT carry the product by holding the areas shown in the illustrations. Doing this may cause the product to slip out of your hands and may result in injury.



- To prevent injuries, keep your hands away from the areas shown in the illustrations.



For your safety, unplug the product from the electrical socket when not in use.

Some products and/or their cartons contain a silica gel pack. DO NOT eat the silica gel pack; throw it away. If you ingest it, seek medical attention immediately.

We recommend placing the toner cartridge and drum unit assembly on a clean, flat surface with disposable paper underneath it in case you accidentally spill or scatter the toner.

Should you come into contact with toner, follow these instructions:

- Inhalation: Immediately move to fresh air and seek urgent medical attention.
- Skin contact: Remove contaminated clothing immediately and wash the affected skin with soap and cold water.
- Eye contact: Rinse your eyes with water continuously for at least 15 minutes and seek medical attention.
- Ingestion: Thoroughly rinse your mouth with water, drink 200-300 ml (one cup) of water, and seek medical attention.
- For more safety information regarding the toners used in your product, see the Safety Data Sheets (SDS) at [sds.brother.co.jp/sdsapp/index.html](http://sds.brother.co.jp/sdsapp/index.html).

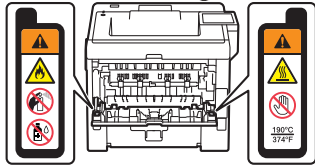
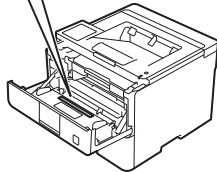
DO NOT attempt to dismantle the toner cartridge.

DO NOT run your hand over the edge of the paper. The thin and sharp edges of the paper may cause an injury.

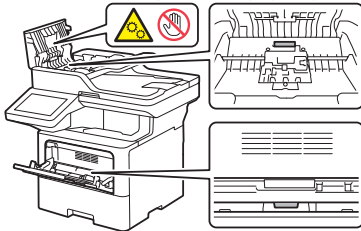
This machine contains electronic components that emit electromagnetic radiation during the printing operation. To avoid the possibility of electromagnetic radiation

exposure, maintain a distance of 7.87 inches (20 cm) from the machine when printing.

- DO NOT remove or damage any of the caution or warning labels inside the product.

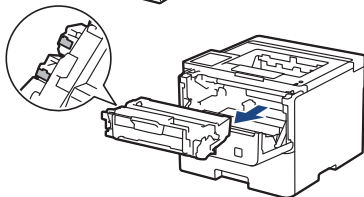
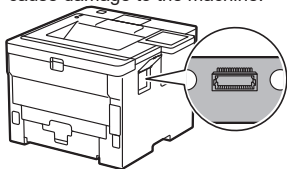


- Moving parts are located in the grey shaded areas shown in the illustration. Keep your hands away from those areas when the parts are moving, or else injury may result.



## IMPORTANT

- A distinct change in the product's performance may indicate a need for service.
- DO NOT connect your product to an electrical socket controlled by wall switches or automatic timers, or to the same circuit as a large appliance or other equipment that requires a significant amount of electricity. It could disrupt the power supply. Disruption of the power supply may also delete information from the product's memory, and repeated cycling of the power supply can damage the product.
- If the product does not operate normally when the operating instructions are followed, adjust only those controls that are covered by the operating instructions. Incorrect adjustment of other controls may result in damage and will often require extensive work by a qualified technician to restore the product to normal operation.
- DO NOT touch the shaded parts shown in the illustrations. Doing so may cause damage to the machine.



## Product Warranty & Liability

Nothing in this guide shall affect any existing product warranty or be construed as granting any additional product warranty. Failure to follow the safety instructions in this guide may invalidate your product's warranty.

### WARNING



- Only use the power cord supplied with this product (if included in the box).
- This product must be installed near an electrical socket that is easily accessible. In case of an emergency, you must unplug the power cord from the electrical socket to shut off the power completely.

### Declaration of Conformity (Europe Only)

We, Brother Industries, Ltd.

15-1, Naeshiro-cho, Mizuho-ku, Nagoya 467-8561 Japan

declare that this product is in conformity with the relevant EU harmonization legislation (Europe only) and UK legislation (Great Britain only).

The Declaration of Conformity (DoC) can be downloaded from our website. Visit [support.brother.com/manuals](http://support.brother.com/manuals).

### UK Declaration of Conformity for Radio Equipment Regulation 2017 (Great Britain Only) (Applicable to Models with Radio Interfaces)

We, Brother Industries, Ltd.

15-1, Naeshiro-cho, Mizuho-ku, Nagoya 467-8561 Japan

declare that these products are in conformity with the provisions of the Radio Equipment Regulation 2017. A copy of the Declaration of Conformity can be downloaded by following the instructions in the Declaration of Conformity (Europe Only) section.

### EU Declaration of Conformity for RE Directive 2014/53/EU (Europe Only) (Applicable to Models with Radio Interfaces)

We, Brother Industries, Ltd.

15-1, Naeshiro-cho, Mizuho-ku, Nagoya 467-8561 Japan

declare that these products are in conformity with the provisions of the RE Directive 2014/53/EU. A copy of the Declaration of Conformity can be downloaded by following the instructions in the Declaration of Conformity (Europe Only) section.

### IEC 60825-1:2014 (For 220-240V Models Only)

This product is a Class 1 laser product as defined in the IEC 60825-1:2014 standard.

The label shown below is attached in countries where required.



### EN 60825-1:2014+A11:2021 and EN 50689:2021 (Europe Only)

This product is a Class 1 consumer laser product as defined in the EN 60825-1:2014+A11:2021 and EN 50689:2021 standards.

This product's main intended use is as follows:

- Single-function printer: printing
  - Multi-function printer: printing, copying, scanning, faxing\*
- \* The fax function is not available on certain models.

### IEC 60825-1:2014 (For 220-240V Models Only) EN 60825-1:2014+A11:2021 (Europe Only)

This product has a Class 3B laser diode which emits invisible laser radiation in the laser unit. The laser unit must not be opened under any circumstances.

#### Internal laser radiation

Wavelength: 775 nm - 800 nm

Output: 25 mW max.  
Laser class: Class 3B

### **⚠ WARNING**

Use of controls, adjustments or performance of procedures other than those specified in your product's documentation may result in hazardous radiation exposure.

### **Wireless LAN (Models with the Wireless LAN Function Only)**

This Printer/Multifunction Printer supports Wireless LAN.

- Frequency band(s): 2400 MHz - 2483.5 MHz  
Maximum radio-frequency power transmitted in the frequency band(s): Less than 20 dBm (e.i.r.p.)
- Frequency band(s): 5150 MHz - 5350 MHz  
Maximum radio-frequency power transmitted in the frequency band(s): Less than 23 dBm (e.i.r.p.)  
For indoor use only (5.15 GHz - 5.35 GHz)
- Frequency band(s): 5470 MHz - 5725 MHz  
Maximum radio-frequency power transmitted in the frequency band(s): Less than 30 dBm (e.i.r.p.)

### **LAN Connection (Models with the Wired LAN Function Only)**

### **⚠ CAUTION**

DO NOT connect this product to a LAN connection that is subject to overvoltages.

### **NFC (Models with the NFC Function Only)**

This Printer/Multifunction Printer supports NFC (Near Field Communication).

- Frequency band(s): 13.553 MHz - 13.567 MHz  
Maximum radio-frequency power transmitted in the frequency band(s): Less than 111.5 dBuV/m at 10 m

### **Trademarks**

Wi-Fi® is a registered trademark of Wi-Fi Alliance®.

QR Code is a registered trademark of DENSO WAVE INCORPORATED in Japan and in other countries.

Each company whose software title is mentioned in this manual has a Software Licence Agreement specific to its proprietary programs.

**Any trade names and product names of companies appearing on Brother products, related documents and any other materials are all trademarks or registered trademarks of those respective companies.**

### **Customer Service and Service Centre Locations**

Visit [global.brother/en/gateway](http://global.brother/en/gateway).

### **Unlawful Use of Copying or Scanning Equipment (Products with the scanning function only)**

It is an offence to make reproductions of certain items or documents with the intent to commit fraud. The following is a non-exhaustive list of documents which it may be unlawful to produce copies of. We suggest you check with your legal adviser and/or the relevant legal authorities if in doubt about a particular item or document:

- Currency
- Bonds or other certificates of indebtedness
- Certificates of deposit
- Armed forces service or draft papers
- Passports
- Postage stamps (cancelled or uncancelled)

- Immigration papers
- Welfare documents
- Cheques or drafts drawn by governmental agencies
- Identifying badges or insignias

In addition, driving licences and/or Certificates of Title to motor vehicles may not be copied or scanned under certain national laws.

Copyrighted works cannot be copied or scanned lawfully, subject to the "fair dealing" exception relating to sections of a copyrighted work. Multiple copies would indicate improper use. Works of art should be considered the equivalent of copyrighted works.

### **Disclaimer**

Brother disclaims any warranties with respect to avoidance, mitigation or non-occurrence of any breakdowns, malfunctions, system crashes, virus infections, damage and disappearances of data, and any other kind of errors by using this product. **AS LONG AS PERMITTED BY APPLICABLE LAWS, BROTHER WILL NOT BE LIABLE FOR ANY LOST REVENUES OR INDIRECT, SPECIAL, INCIDENTAL, CONSEQUENTIAL, EXEMPLARY, OR PUNITIVE DAMAGES OF THE CUSTOMERS OR ANY OTHER THIRD PARTY.**