

DCP-L5518DN / MFC-L5718DN / MFC-L5728DW

Read the *Product Safety Guide* first, then read this *Quick Setup Guide* for the correct installation procedure.



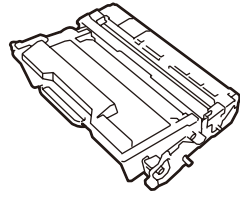
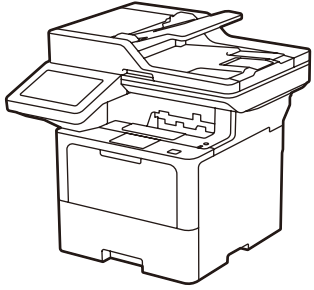
Operation Videos:  
[www.95105369.com](http://www.95105369.com)



Installation & Using Videos

EN

## Unpack the machine and check the components



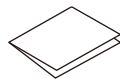
**Toner Cartridge and Drum Unit Assembly**  
(Installed in the machine)



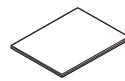
**AC Power Cord**



**USB Interface Cable**



**Quick Setup Guide**

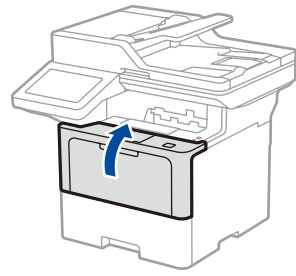
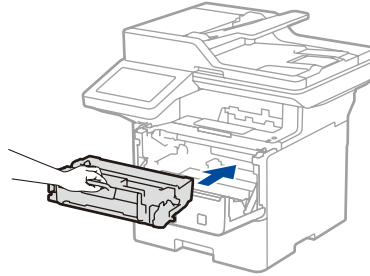
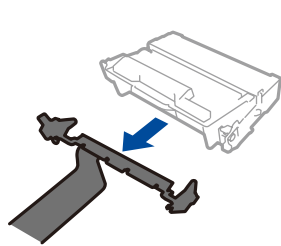
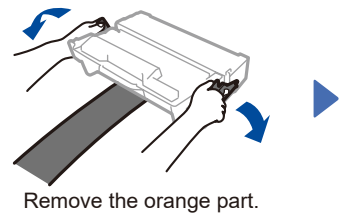
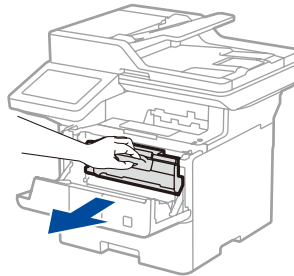
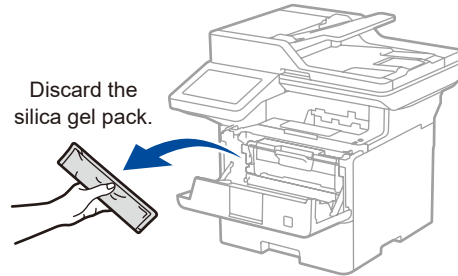
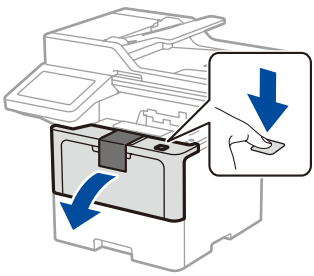


**Product Safety Guide**

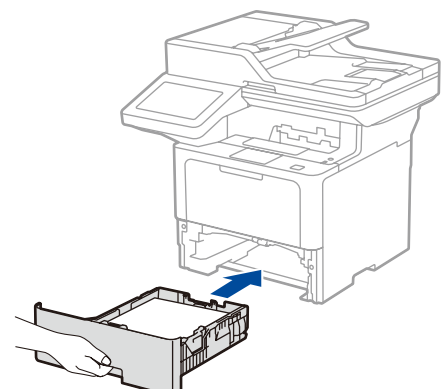
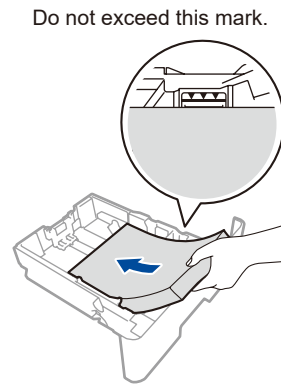
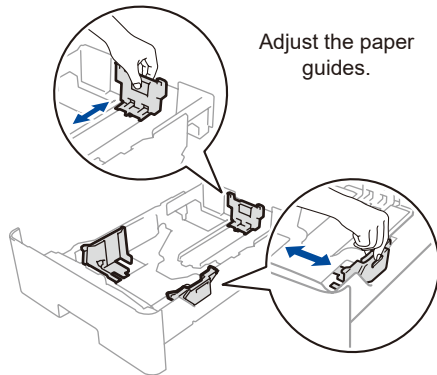
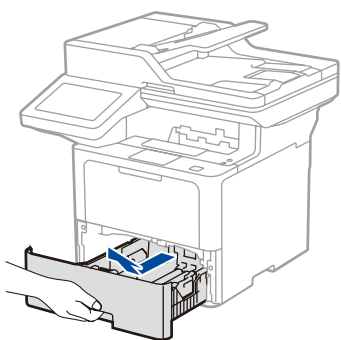
### NOTE:

- The available connection interfaces vary depending on the model. You must purchase the correct interface cable if you require one.
- **USB cable**  
We recommend using a USB 2.0 cable (Type A/B) that is no more than 2 metres long.
- **Network cable**  
Use a straight-through Category 5 (or greater) twisted-pair cable. (Network cable is not a standard accessory.)
- The screens and images in this *Quick Setup Guide* show the MFC-L5728DW.

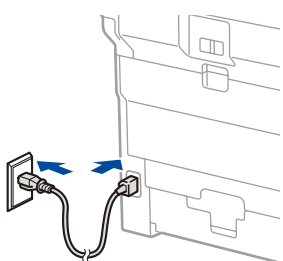
## 1 Remove the packing materials and re-install the toner cartridge and drum unit assembly



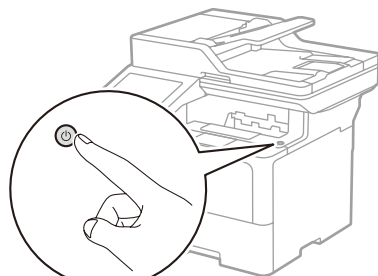
## 2 Load paper in the paper tray



## 3 Connect the power cord and turn the machine on



Back

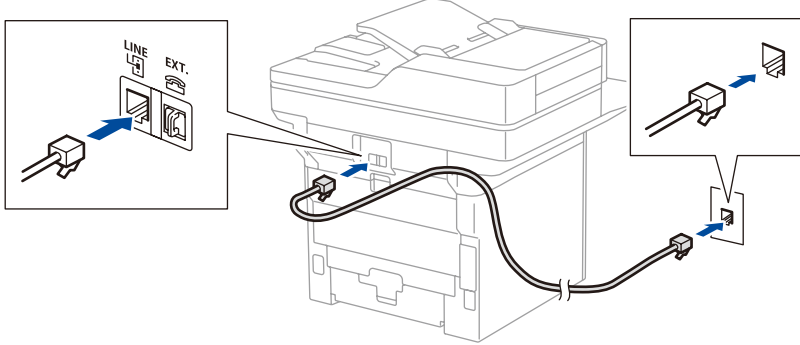


Front

## 4 Connect the telephone line cord (For MFC models)

If you do not plan to use the fax feature on this machine, go to step **5**.

The telephone line cord is not included in the box.



## 5 Connect your computer or mobile device to your machine

Follow these steps to complete the setup using one of the connection types available on your machine.

Visit [setup.brother.com](http://setup.brother.com) to download and install Brother software.

Follow the on-screen instructions and prompts.

**Setup Finished**

You can now print and scan using your machine.

To check for the latest firmware, visit [support.brother.com/up7](http://support.brother.com/up7).

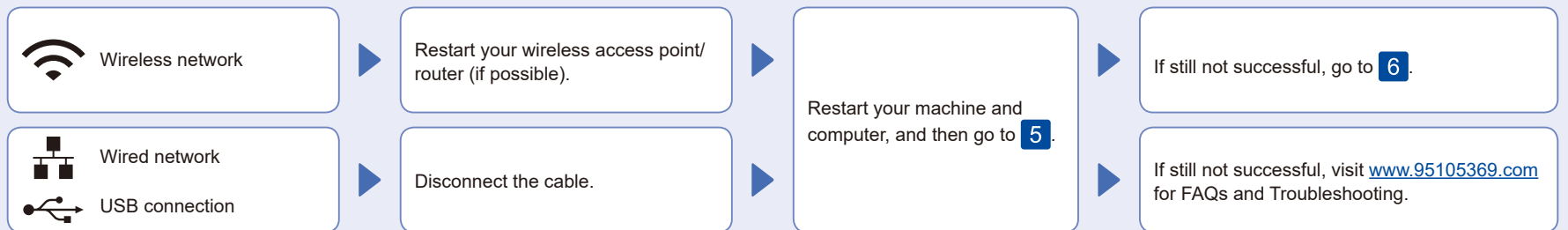
### Important Notice for Network Security:

The default password to manage this machine's settings is located on the back of the machine and marked "Pwd".

We recommend immediately changing the default password to protect your machine from unauthorised access.



### Can't Connect? Check the following:

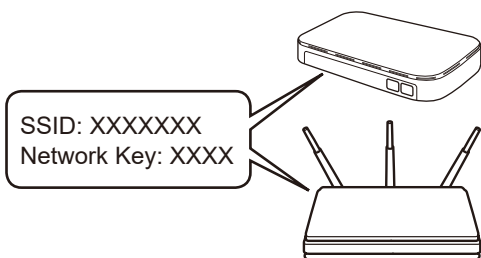


## 6 Manual wireless setup (Wireless models)

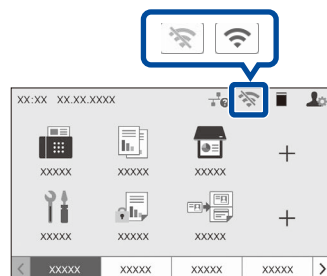
If the wireless setup is not successful, try to set up the connection manually.

Find your SSID (Network Name) and Network Key (Password) on your wireless access point/router and write them in the table provided below.

SSID (Network Name)	
Network Key (Password)	



Press > [Find Wi-Fi Network]. Follow the LCD instructions.



Select the SSID (Network Name) for your access point/router and enter the Network Key (Password).

When the wireless setup is successful, the touchscreen displays [Connected].

Go to **5** to install software.

If you cannot find this information, ask your network administrator or wireless access point/router manufacturer.

If setup is not successful, restart your Brother machine and your wireless access point/router, and repeat **6**. If still not successful, visit [www.95105369.com](http://www.95105369.com).