



D0277N001-00
USA/CAN
Version 0

Quick Setup Guide



DCP-L5510DN / MFC-L5710DN / MFC-L5710DW / MFC-L5715DW / MFC-L5717DW /
MFC-L5915DW / MFC-L6810DW / MFC-L6915DW / MFC-EX915DW

Read the *Product Safety Guide* first, then read this *Quick Setup Guide* for the correct installation procedure.
Not all models are available in all countries.

EN

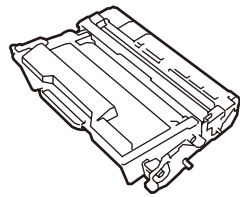
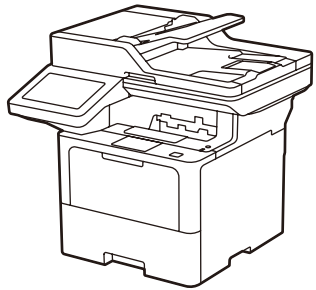


Video setup instructions:
support.brother.com/videos



The latest manuals are available at the Brother support website:
support.brother.com/manuals

Unpack the machine and check the components



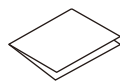
Toner Cartridge and Drum Unit Assembly
(Installed in the machine)



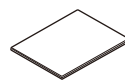
AC Power Cord



USB Port Cover
(Not included in all models)



Quick Setup Guide

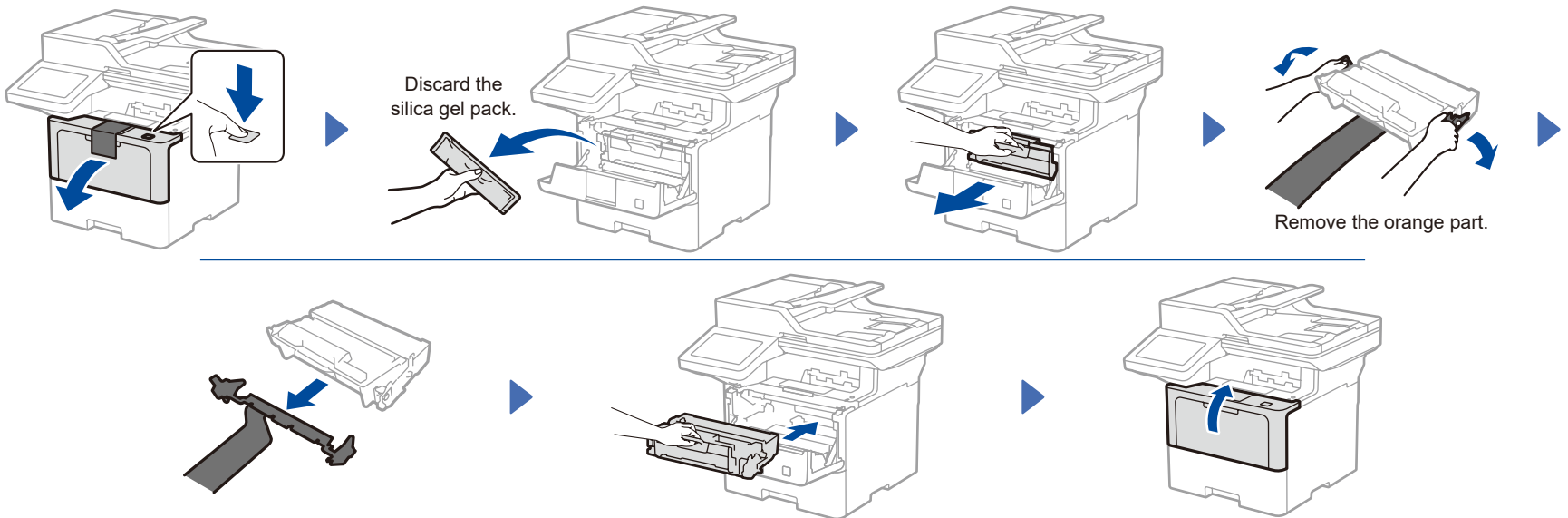


Product Safety Guide

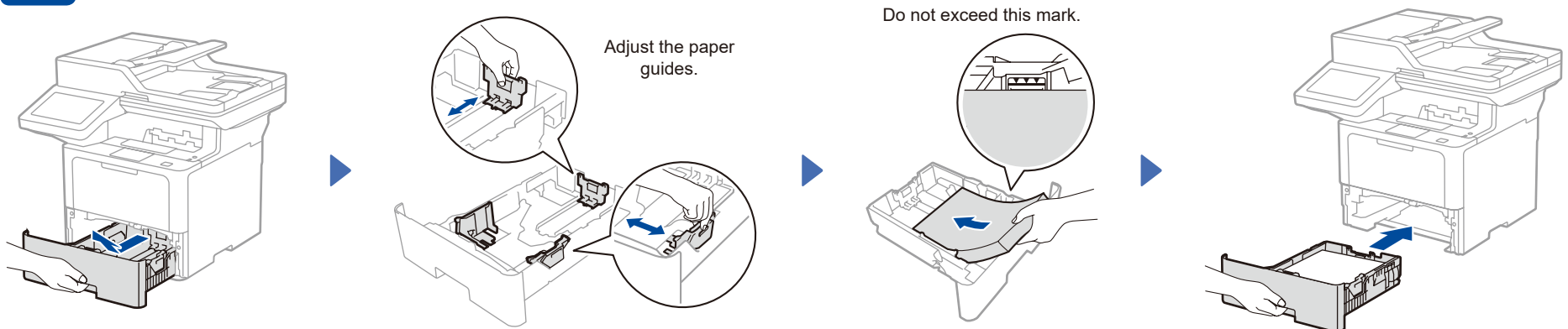
NOTE:

- Manuals in Spanish for this model are available at support.brother.com.
Manuales en Español para este modelo están disponibles en support.brother.com.
- The components included in the box may differ depending on your country.
- The available connection interfaces vary depending on the model. You must purchase the correct interface cable if you require one.
- **USB cable**
We recommend using a USB 2.0 cable (Type A/B) that is no more than 6 feet (2 meters) long.
- **Network cable**
Use a straight-through Category 5 (or greater) twisted-pair cable.
- The screens and images in this *Quick Setup Guide* show the MFC-L6915DW.

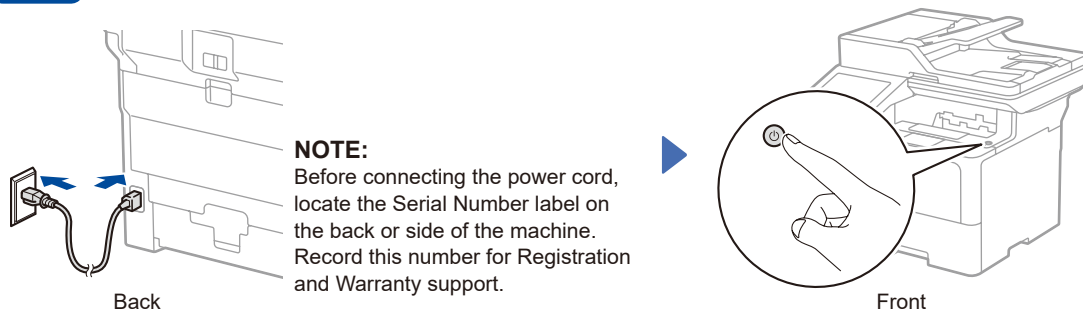
1 Remove the packing materials and re-install the toner cartridge and drum unit assembly



2 Load paper in the paper tray



3 Connect the power cord and turn the machine on



NOTE:
Before connecting the power cord, locate the Serial Number label on the back or side of the machine. Record this number for Registration and Warranty support.

4 Select your language (if needed)

1. On the machine's touchscreen, press [Settings]* > [All Settings] > [Initial Setup] > [Local Language].
2. Press your language.
3. Press .

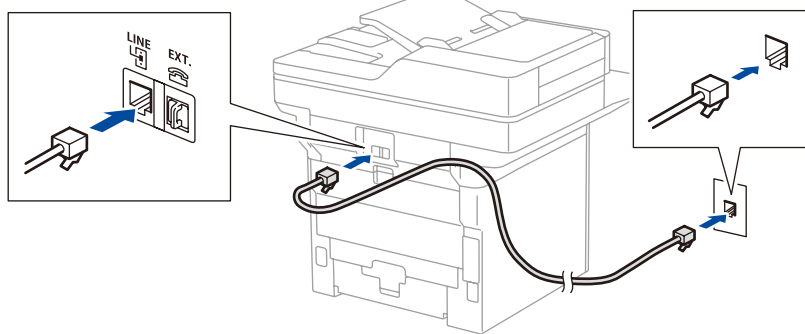


* If your machine displays the [All Settings] menu on the Home screen, start from [All Settings].



5 Connect the telephone line cord (For MFC models)

If you do not plan to use the fax feature on this machine, go to step 7.



6 Configure the machine for faxing (For MFC models)

If you do not plan to use the fax feature on this machine, go to step 7.

NOTE:

- For more information on using the fax feature, see the *Online User's Guide*.
- Your machine is programmed to automatically receive faxes. To change this default mode, see the *Online User's Guide*.

A. Set the date and time

Press [Settings] > [All Settings] > [Initial Setup] > [Date & Time], and then set the date and time you want.

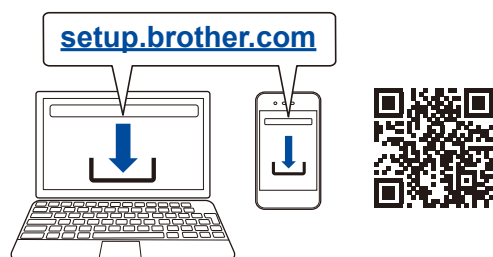
B. Set the Station ID

Press [Settings] > [All Settings] > [Initial Setup] > [Station ID], and then set your fax or telephone number and your name.

7 Connect your computer or mobile device to your machine

Follow these steps to complete the setup using one of the connection types available on your machine.

Visit setup.brother.com to download and install Brother software.



Follow the on-screen instructions and prompts.

Setup Finished

You can now print and scan using your machine.

To check for the latest firmware, visit support.brother.com/up7.

Important Notice for Network Security:

The default password to manage this machine's settings is located on the back of the machine and marked "Pwd". We recommend immediately changing the default password to protect your machine from unauthorized access.

Before connecting your machine to a 5 GHz Wi-Fi® network, confirm the channels that your machine supports. Go to support.brother.com/g/d/a5m6/, select your product, and then click **Download** for more information.



Can't Connect? Check the following:

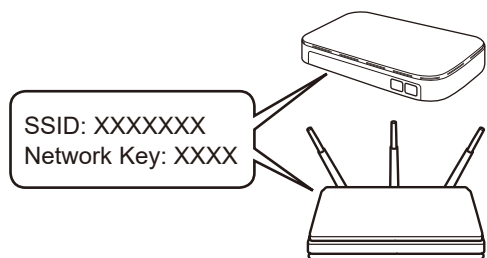
Wireless network	Restart your wireless access point/router (if possible).	Restart your machine and computer, and then go to 7.	If still not successful, go to 8.
Wired network USB connection	Disconnect the cable.		If still not successful, visit support.brother.com for FAQs and Troubleshooting.

8 Manual wireless setup (Wireless models)

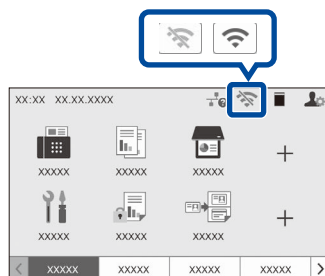
If the wireless setup is not successful, try to set up the connection manually.

Find your SSID (Network Name) and Network Key (Password) on your wireless access point/router and write them in the table provided below.

SSID (Network Name)	
Network Key (Password)	



Press > [Find Wi-Fi Network]. Follow the LCD instructions.



Select the SSID (Network Name) for your access point/router and enter the Network Key (Password).

When the wireless setup is successful, the touchscreen displays [Connected].

Go to 7 to install software.

If setup is not successful, restart your Brother machine and your wireless access point/router, and repeat 8. If still not successful, visit support.brother.com.

If you cannot find this information, ask your network administrator or wireless access point/router manufacturer.