



D02TSU001-01
UK
Version A

Quick Setup Guide

HL-L2400D / HL-L2402D



Read the *Product Safety Guide* first, then read this *Quick Setup Guide* for the correct installation procedure.
Not all models are available in all countries.

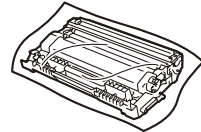
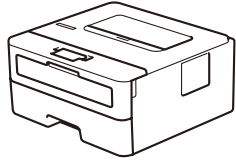
EN



The latest manuals are available at the Brother support website:
support.brother.com/manuals

Unpack the machine and check the components

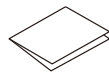
Remove the protective tape or film covering the machine and the supplies.



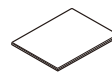
Toner Cartridge and Drum Unit Assembly



AC Power Cord



Quick Setup Guide

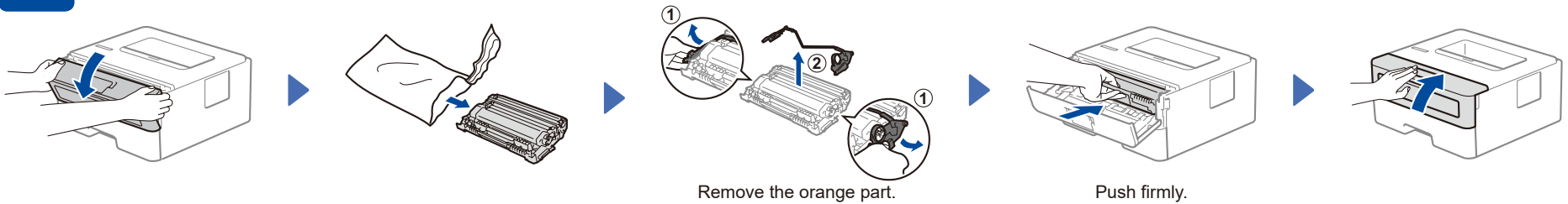


Product Safety Guide

NOTE:

- The components included in the box may differ depending on your country.
- This product requires a USB cable to connect to a computer. If you do not already have one, please purchase a USB 2.0 cable (Type A/B) that is no more than 2 metres long.
- The screens and images in this *Quick Setup Guide* show the HL-L2402D.
- Brother aims to reduce waste and save both raw materials and the energy required to produce them.
Read more about our environmental work at www.brotherearth.com.
- Save all packing materials and the box in case you must ship your machine.

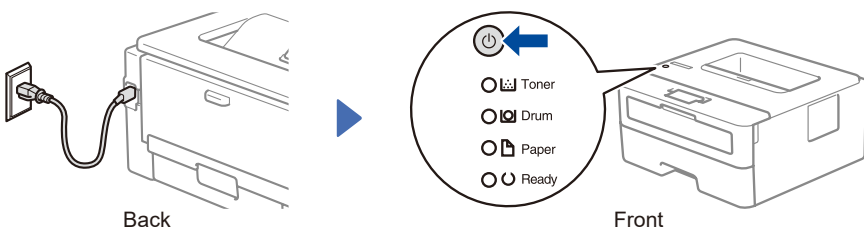
1 Remove the packing materials and install the toner cartridge and drum unit assembly



2 Load paper in the paper tray



3 Connect the power cord and turn the machine on



NOTE:
Before connecting the power cord, locate the Serial Number label on the back or side of the machine. Record this number for product registration and warranty support.

Printer LED Indications

Blinking: ON: or OFF:

	Toner Low ¹	Replace Toner	Drum End Soon ¹	Replace Drum	Drum ! ²	Paper Jam / Cover is Open ²	No Paper
Toner							
Drum							
Paper							
Ready							

- 1 The yellow LED blinks for two seconds, then turns off for three seconds.
- 2 The LED will blink ON and OFF quickly.

4 Connect your computer to your machine

Follow these steps to complete the setup using one of the connection types available on your machine.

Visit setup.brother.com to download and install Brother software.

Follow the on-screen instructions and prompts.

Setup Finished

NOTE:
CD installation is also available for Windows in some countries.

You can now print using your machine.

Can't Connect? Check the following:



USB connection

Disconnect the cable.

Restart your machine and computer, and then go to **4**.

If still unsuccessful, visit support.brother.com for FAQs and Troubleshooting.