



D02YBM001-00
USA/CAN
Version A

Quick Setup Guide



HL-L2405W / HL-L2420DW / HL-L2460DW / HL-L2460DWXL / HL-L2865DW

Read the *Product Safety Guide* first, then read this *Quick Setup Guide* for the correct installation procedure.
Not all models are available in all countries.

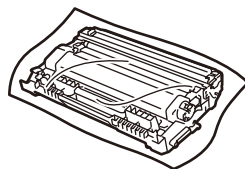
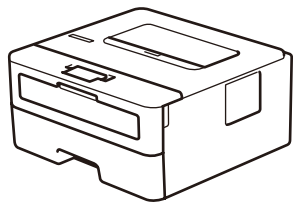
EN



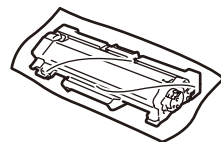
The latest manuals are available at the Brother support website:
support.brother.com/manuals

Unpack the machine and check the components

Remove the protective tape or film covering the machine and the supplies.



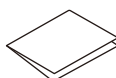
Toner Cartridge and Drum Unit Assembly



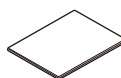
Toner Cartridge Replacement
(HL-L2460DWXL only.
Save for later use.)



AC Power Cord



Quick Setup Guide

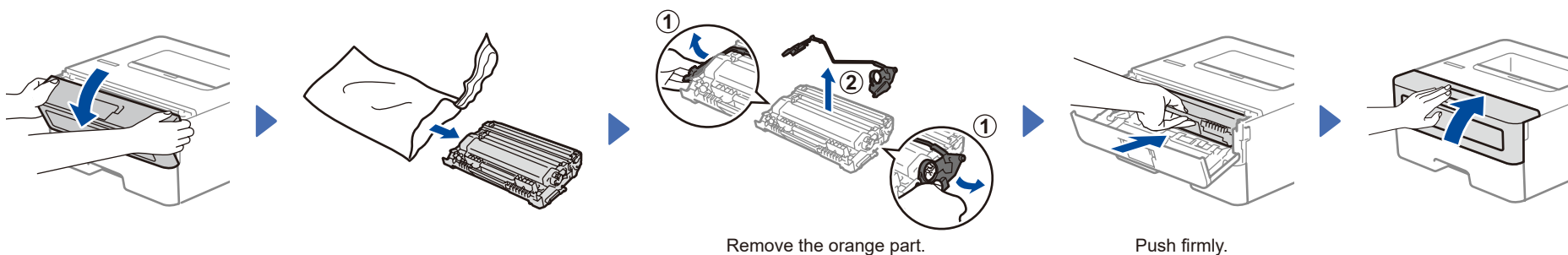


Product Safety Guide

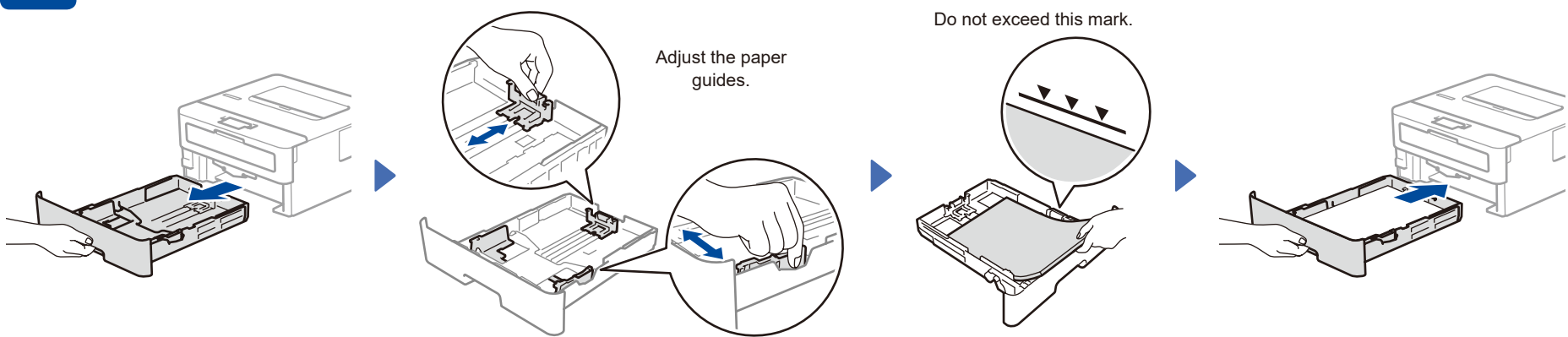
NOTE:

- Manuals in Spanish for this model are available at support.brother.com.
Manuales en Español para este modelo están disponibles en support.brother.com.
- The components included in the box may differ depending on your country.
- The available connection interfaces vary depending on the model.
If you use a wired connection, you must purchase the correct cable for the interface you want to use.
 - **USB cable**
We recommend using a USB 2.0 cable (Type A/B) that is no more than 6 feet (2 meters) long.
 - **Network cable (for wired network models only)**
Use a straight-through Category 5 (or greater) twisted-pair cable.
- The screens and images in this *Quick Setup Guide* show the HL-L2460DW.
- Save all packing materials and the box in case you must ship your machine.

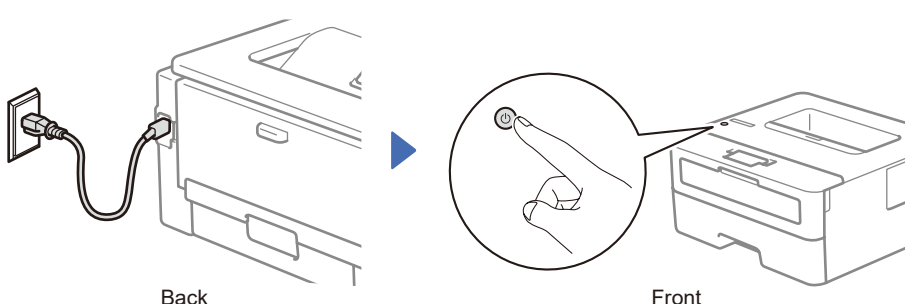
1 Remove the packing materials and install the toner cartridge and drum unit assembly



2 Load paper in the paper tray



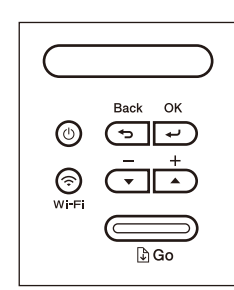
3 Connect the power cord and turn the machine on



NOTE:
Before connecting the power cord, locate the Serial Number label on the back or side of the machine. Record this number for product registration and warranty support.

4 Select your language (if needed)

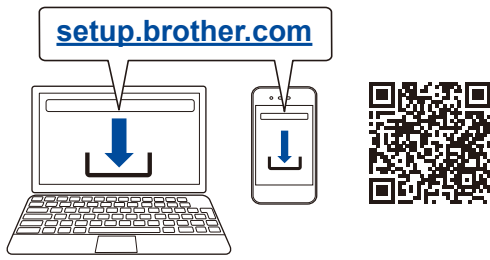
1. Press ▼ or ▲ to select [Initial Setup], and then press OK.
2. Press ▼ or ▲ to select [Local Language], and then press OK.
3. Press ▼ or ▲ to select your language, and then press OK.



5 Connect your computer or mobile device to your machine

Follow these steps to complete the setup using one of the connection types available on your machine.

Visit setup.brother.com to download and install Brother software.



Follow the on-screen instructions and prompts.

Setup Finished

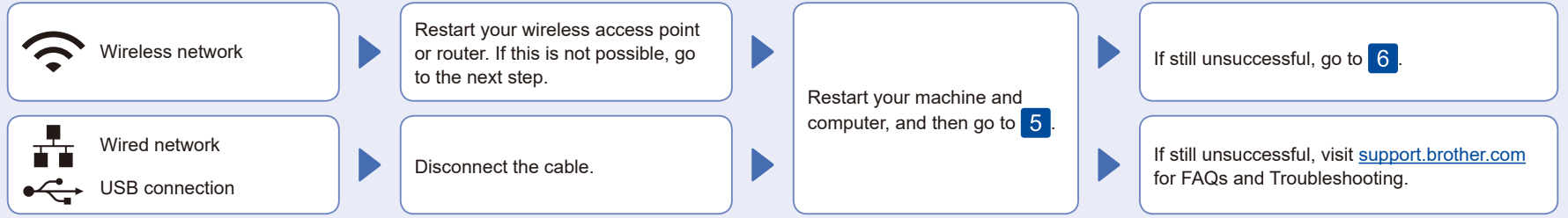
You can now print using your machine.

Important Notice for Network Security:
The default password to manage this machine's settings is located on the back of the machine and marked "Pwd". We recommend immediately changing the default password to protect your machine from unauthorized access.

Before connecting your machine to a 5 GHz Wi-Fi® network, confirm the channels that your machine supports. Go to support.brother.com/g/d/a5m6/, select your product, and then click **Download** for more information.



Can't Connect? Check the following:

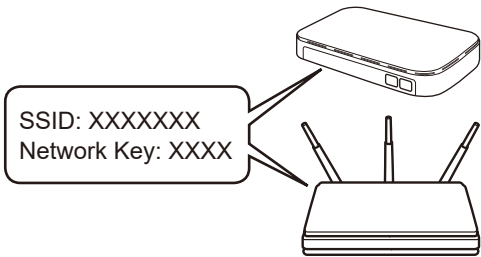


6 Manual wireless setup (Wireless models)

If the wireless setup is unsuccessful, set up the connection manually.

Find your SSID (Network Name) and Network Key (Password) on your wireless access point or router and write them in the table provided below.

SSID (Network Name)	
Network Key (Password)	



To select each menu option, press ▲ or ▼, and then press **OK** to confirm.
Select [Network] > [WLAN (Wi-Fi)] > [Find Network].
Follow the LCD instructions.

Select the SSID (Network Name) for your access point or router and enter the Network Key (Password).

Press and hold (or press repeatedly) ▲ or ▼ to select one of the following characters:
0123456789abcdefghijklmnopqrstuvwxyz
ABCDEFGHIJKLMNOPQRSTUVWXYZ
(space)!"#%&'()*+,-./:;<=>@[^_`{}~

When the wireless setup is successful, the LCD displays [Connected].

Go to **5** to install software.

If you cannot find this information, ask your network administrator or wireless access point or router manufacturer.

If the setup is unsuccessful, restart your Brother machine and your wireless access point or router, and repeat **6**.
If still unsuccessful, visit support.brother.com.