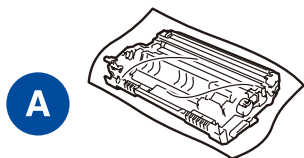
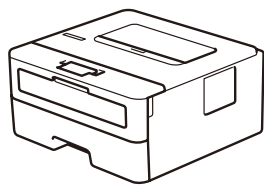


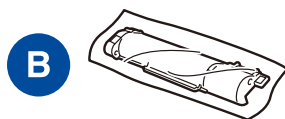


Unpack the machine and check the components

Remove the protective tape or film covering the machine and the supplies.



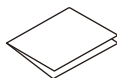
Drum Unit



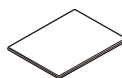
Toner Cartridge



USB Interface Cable



Quick Setup Guide



Product Safety Guide

NOTE:

The available connection interfaces vary depending on the model. If you use a wired connection, you must purchase the correct cable for the interface you want to use.

• USB cable

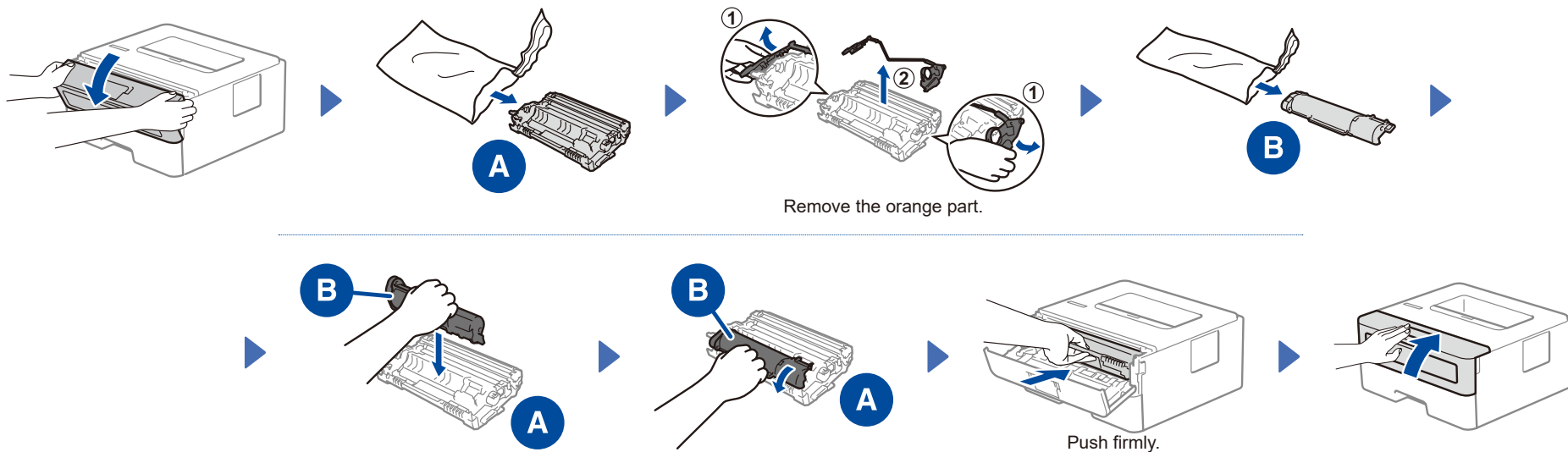
We recommend using a USB 2.0 cable (Type A/B) that is no more than 2 metres long.

• Network cable

Use a straight-through Category 5 (or greater) twisted-pair cable.

- The screens and images in this *Quick Setup Guide* show the HL-B2188DW.
- Save all packing materials and the box in case you must ship your machine.

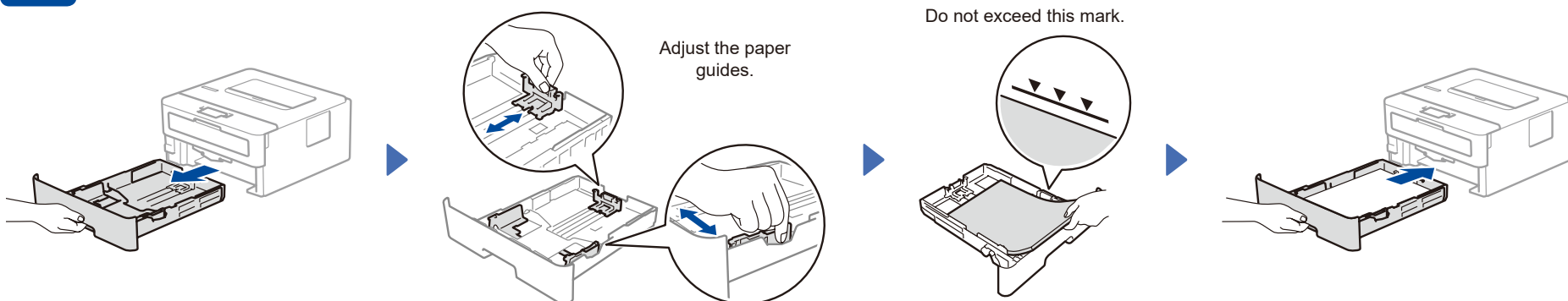
1 Remove the packing materials and install the toner cartridge and drum unit assembly



Remove the orange part.

Push firmly.

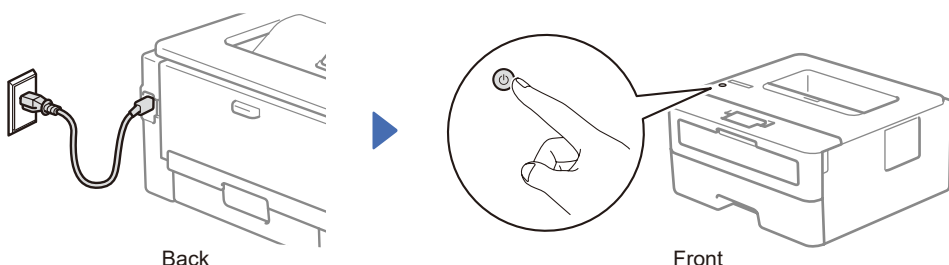
2 Load paper in the paper tray



Adjust the paper guides.

Do not exceed this mark.

3 Connect the power cord and turn the machine on



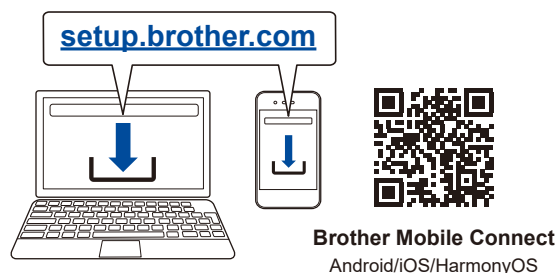
Back

Front

4 Connect your computer or mobile device to your machine

Follow these steps to complete the setup using one of the connection types available on your machine.

Visit setup.brother.com to download and install Brother software.



Follow the on-screen instructions and prompts.

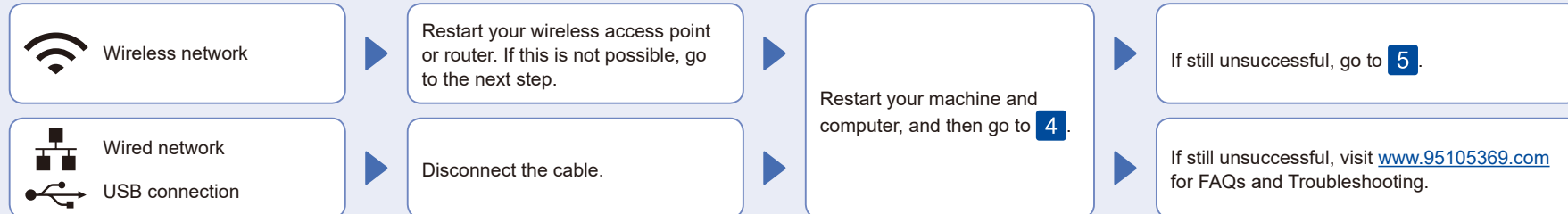
Setup Finished

You can now print using your machine.

Important Notice for Network Security:

The default password to manage this machine's settings is located on the back of the machine and marked "Pwd". We recommend immediately changing the default password to protect your machine from unauthorised access.

Can't Connect? Check the following:

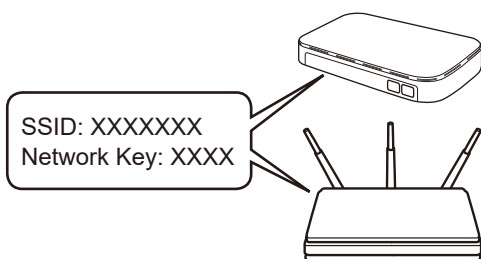


5 Manual wireless setup (Wireless models)

If the wireless setup is unsuccessful, set up the connection manually.

Find your SSID (Network Name) and Network Key (Password) on your wireless access point or router and write them in the table provided below.

SSID (Network Name)	
Network Key (Password)	



To select each menu option, press ▲ or ▼, and then press 确定 to confirm.

Select [Network] > [WLAN (Wi-Fi)] > [Find Network]. Follow the LCD instructions.

Select the SSID (Network Name) for your access point or router and enter the Network Key (Password).

Press and hold (or press repeatedly) ▲ or ▼ to select one of the following characters:

0123456789abcdefghijklmnopqrstuvwxyz
 ABCDEFGHIJKLMNOPQRSTUVWXYZ
 (space)!"#\$%&'()*+,-./:;<=>?@[\] ^ _ ` { } ~

Go to 4 to install software.

When the wireless setup is successful, the LCD displays [Connected].

If you cannot find this information, ask your network administrator or wireless access point or router manufacturer.

If the setup is unsuccessful, restart your Brother machine and your wireless access point or router, and repeat 5.

If still unsuccessful, visit www.95105369.com.

Setup Complete

Connect with WeChat

Your machine can print through an applet of WeChat, which is called “兄弟畅享印”. “兄弟畅享印” lets you wirelessly print photos and documents without the need to install an app or a driver.

Binding your printer before using WeChat print function for the first time. Please scan the QR code on the right for operation instructions.

