

- Not all models are available in all countries.
- Thank you for choosing Brother. Your support is important to us and we value your business.

The latest manuals are available at the Brother support website: [support.brother.com/manuals](http://support.brother.com/manuals).

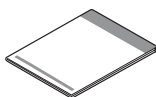
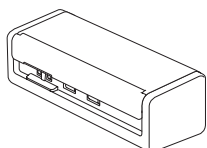
Please read the **Product Safety Guide**, located later in this document, before you set up your machine.

## WARNING

**WARNING** indicates a potentially hazardous situation which, if not avoided, could result in death or serious injuries.

## 1 Unpack the machine and check the components

The components included in the box may differ depending on your country. Remove the protective tape and film covering the machine. Open the Top Cover, and then remove the protective tape.



Quick Setup Guide/Product Safety Guide

## WARNING

- This product is packaged in a plastic bag. To avoid suffocation, keep plastic bags away from babies and children. The bag is not a toy.
- Use only power supplies listed in your model's *Online User's Guide*.

## NOTE

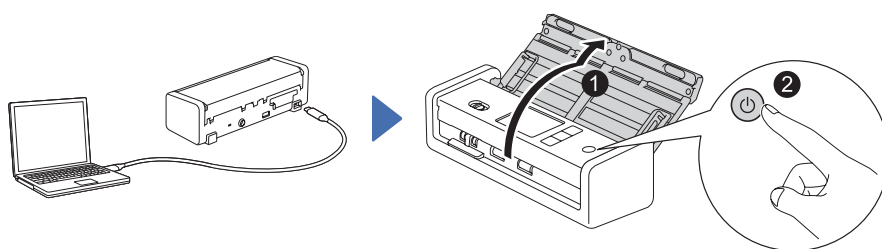
- We recommend saving the original packaging in case you must ship your machine.
- For more information, see your model's *Online User's Guide* at [support.brother.com/manuals](http://support.brother.com/manuals).

### For Network Users: Important Notice for Network Security (ADS-1800W only)

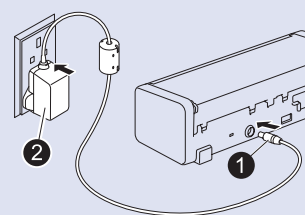
Your machine's default password is located on the bottom of the machine and marked "Pwd". We recommend immediately changing the default password to use network tools/utilities securely and to protect your machine from unauthorised access.

Unless otherwise specified, illustrations in this guide show the ADS-1800W.

## 2 Connect the USB Cable



**If using the AC Adapter:**  
Connect the AC Adapter as shown.



## NOTE

- Before loading documents into the Automatic Document Feeder (ADF), fan the paper and align its edges as shown in the illustration on the machine's Top Cover.
- Use the USB Type-C® Cable included in the box to connect to your scanner.
- Make sure to use a computer that has a USB Type-C port that supports 15 W output or higher.
- The AC Adapter is an optional accessory and is available on the Brother website. Search for part number LK-1001C (the AC Adapter (SA-AD-001) and a USB Type-A to USB Type-C Cable).

## 3 Select your language (ADS-1800W only)

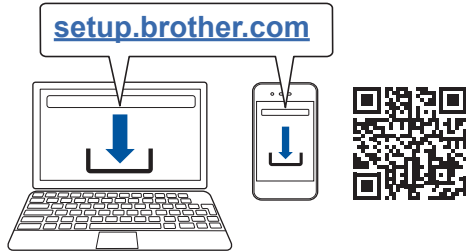
Press [Settings] > [Initial Setup] > [Local Language] and select your language. Press .

## 4 Connect your machine and install software

Select your preferred scanning method and choose your connection method.

### A Using your scanner with your computer or mobile device

Visit [setup.brother.com](http://setup.brother.com) to download and install the required Brother software.



**For Mac:** Visit [support.brother.com/mac](http://support.brother.com/mac) to download the required Brother software.

Follow the on-screen instructions to continue installation.

**For Mobile Devices (ADS-1800W only):** Set up the connection manually.

### Setup Finished

When finished, restart your computer. If not successful, set up the connection manually.

For detailed scanning instructions, see the *Online User's Guide* at [support.brother.com/manuals](http://support.brother.com/manuals).

### B Using your scanner as a standalone device (ADS-1800W only)

Connect your machine to your network via Wi-Fi®.

You can set up your Wi-Fi connection using either the machine's control panel or your computer.

This machine supports only 2.4 GHz.

#### Manual Wireless Setup (ADS-1800W only)

If you do not have a computer connected to the network or if you cannot connect your machine using your computer, try to set up the connection manually.

1. Press > [Find Wi-Fi Network] > [Yes].
2. Select the SSID (Network Name). Enter the Network Key (Password).

When the wireless setup is successful, the LCD displays [Connected].

If you cannot find your SSID or Network Key, ask your network administrator or wireless access point/router manufacturer.

#### NOTE

- If setup is not successful, restart your machine and the wireless access point/router, and then repeat these steps.
- If using a computer, go back to **A** to install software.

#### NOTE

If setup is still not successful, visit [support.brother.com](http://support.brother.com) for FAQs, Troubleshooting, and manuals. For product specifications, see the *Online User's Guide*.

### Power Shortage Error

LED Status (ADS-1300)	LCD Status (ADS-1800W)	Scan Operation	Description
Off     Off     Lit	The Home Screen appears.	✓	The machine works correctly, running on over 15 W power.
Flashing     Flashing     Off	The error message "Power Shortage (Code: 01)" appears.	×	The machine does not work due to a power shortage (less than 15 W). Visit <a href="http://support.brother.com">support.brother.com</a> for FAQs & Troubleshooting or see your model's <i>Online User's Guide</i> at <a href="http://support.brother.com/manuals">support.brother.com/manuals</a> .
Off     Off     Off	The machine is not turned on and nothing appears.	×	

## Symbols and conventions used in this guide

The following symbols and conventions are used throughout this guide:

### **WARNING**

**WARNING** indicates a potentially hazardous situation which, if not avoided, could result in death or serious injuries.

### **CAUTION**








**CAUTION** indicates a potentially hazardous situation which, if not avoided, may result in minor or moderate injuries.

### **IMPORTANT**

**IMPORTANT** indicates a potentially hazardous situation which, if not avoided, may result in damage to property or loss of product functionality.

### **NOTE**

**NOTE** tells you how you should respond to a situation that may arise or give tips about other scanning features.

-  Prohibition icons indicate actions that must not be performed.
-  This icon indicates that flammable sprays must not be used.
-  This icon indicates that organic solvents, such as alcohol or other liquids, must not be used.
-  Electrical Hazard icons alert you to possible electrical shocks.
-  Fire Hazard icons alert you to the possibility of fire.
-  This icon alerts you to the areas that contain moving parts.
-  Unplug icons indicate that you should unplug the machine.

(ADS-1800W only)

**Courier New** Text in Courier New font identifies messages on the LCD of the machine.

Follow all warnings and instructions marked on the machine and AC Adapter (from now on collectively referred to as “the unit”).

### **NOTE**

The illustrations in this guide show the ADS-1800W.

## Compilation and Publication Notice

This manual has been compiled and published to provide the latest product safety information at the time of publication. The information contained in this manual may be subject to change.

For the latest manual, please visit us at [support.brother.com/manuals](http://support.brother.com/manuals).

## Choose a safe location for the unit

Make sure the machine is located on a flat and stable surface free from vibration. Choose a dry, well-ventilated location where the temperature remains between 5 °C and 35 °C and the humidity is between 20% to 80% (without condensation).

### **WARNING**



DO NOT expose the unit to direct sunlight, excessive heat, open flames, corrosive gasses, moisture or dust. DO NOT place the unit on a carpet or rug, as this will expose it to dust. Doing so may create a risk of an electrical short or fire. It may also damage the unit and/or render it inoperable.



DO NOT place the unit near radiators, heaters, air conditioners, water, chemicals or devices that contain magnets or generate magnetic fields. Doing so may create the risk of a short circuit or fire should water come into contact with the unit (including condensation from heating, air conditioning, and/or ventilation equipment that may be sufficient to create a short circuit or fire).



DO NOT place the unit near chemicals or in a place where chemical spillage could occur. In particular, organic solvents or liquids may cause the casing and/or cables to melt or dissolve, risking a fire or electrical shock. They may also cause the unit to malfunction or become discoloured.



Slots and openings in the casing, back or bottom of the product are provided for ventilation. The product should be placed so as not to come into contact with any wall or other device so these openings are not blocked or covered. Blocking the unit's ventilation could create a risk of overheating and/or fire.

## IMPORTANT

- Always place the unit on a solid surface, never on a bed, sofa, rug, or similar soft surfaces.
- DO NOT place the unit in a "built-in" installation.

Make sure that no part of the unit protrudes from the desk or stand where the unit is located. Make sure the unit is located on a flat and stable surface free from vibration. Failure to observe these precautions could cause the unit to fall, causing an injury.

## CAUTION

Avoid placing the unit in a high-traffic area. If you must place it in a high-traffic area, ensure that the unit is in a safe location where it cannot be accidentally knocked over, which could cause injury to you or others and serious damage to the unit.

Ensure that cables leading to the unit are secured so as not to pose a trip hazard.

DO NOT place the unit on an unstable or tilted cart, stand, or table, or on any tilted/slanted surface. The machine may fall, causing injury to you and serious damage to the unit. There is an added risk of injury if the scanner glass should break.

## IMPORTANT

- DO NOT put objects on top of the unit.
- DO NOT place the unit next to sources of interference, such as speakers or the base units of non-Brother cordless telephones. Doing so may interfere with the operation of the unit's electronic components.

## General precautions

### ! WARNING



Never insert any object into slots in the machine's casing, as they may touch dangerous voltage points or short out parts resulting in the risk of fire or electrical shock. If metal objects or liquid gets inside the machine, immediately disconnect the unit from the electrical socket. Contact your Brother dealer or Brother customer service.



DO NOT use flammable substances, any type of spray, or an organic solvent/liquid that contains alcohol or ammonia to clean the inside or outside of the unit. Doing this may cause a fire or electrical shock.



DO NOT disassemble or modify the unit, otherwise a fire or electrical shock may occur. If the unit requires repair, contact your Brother dealer or Brother customer service.

### For users using the AC Adapter (SA-AD-001):



DO NOT use a damaged AC Adapter.



DO NOT damage, modify, or place heavy objects on the AC Adapter. Do not forcibly bend or pull the cord.



DO NOT drop, hit, or otherwise damage the AC Adapter.



DO NOT touch the unit during a thunderstorm. There may be a risk of electrical shock from lightning when the machine is used during a thunderstorm.



DO NOT use the unit near any liquids, for example, near a bath tub, wash bowl, kitchen sink or washing machine, in a wet basement or near a swimming pool.

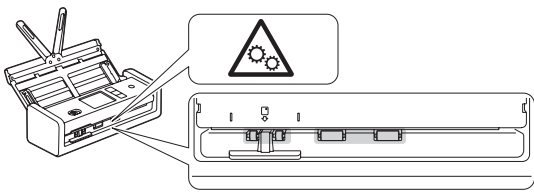
# Product Safety Guide

## **⚠ CAUTION**

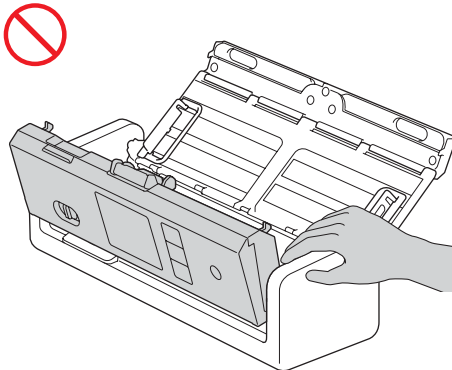
DO NOT put pressure or weight on the unit or use it for any purpose beyond its intended purpose.

Be careful not to cut your fingers on the edge of the Carrier Sheet. The Carrier Sheet is an optional accessory and is available on the Brother website by searching for part number CS-A3301.

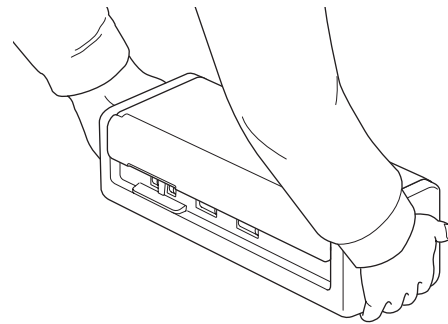
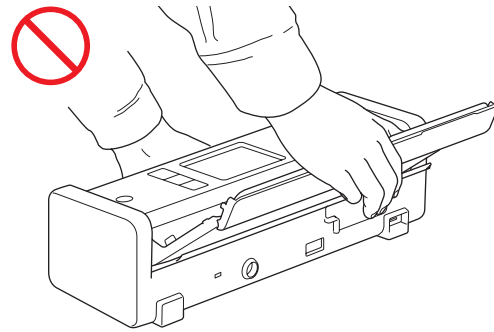
Wait until the machine ejects the pages to avoid trapping your fingers in the rollers.



Some areas of the machine can cause injury if the cover (shaded) is closed with force. Take care when placing your hand in the areas shown in the illustrations.



DO NOT carry the machine by holding the Automatic Document Feeder (ADF). Doing this may cause the Automatic Document Feeder (ADF) to detach from the machine. Only carry the machine by placing your hands under the entire machine.



Use caution when operating the machine to prevent clothing, hair, or other accessories from being drawn into the machine, otherwise an injury may occur.

In the event that an object is drawn into the machine, immediately disconnect the unit from the power source.

## **IMPORTANT**

(LCD models only)

DO NOT touch the LCD immediately after plugging in the USB cable or the AC Adapter or turning the machine on. Doing this may cause an error.

## Connecting the unit safely

### **WARNING**



There are high-voltage electrodes inside the machine and the AC Adapter. Before you access the inside of the machine, make sure you have unplugged the USB cable from the computer and the AC Adapter from the electrical socket.

#### **AC Adapter Safety (For users using the AC Adapter (SA-AD-001))**



DO NOT touch the AC Adapter, or handle the power plug with wet hands. Doing this may cause an electrical shock.



DO NOT connect the AC Adapter to a DC power source or inverter. Doing this may cause an electrical shock. If you are not sure what kind of power source you have, contact a qualified electrician.



If you notice any damage or abnormalities while using the AC Adapter, do not touch it. Disconnect the power supply to the electrical socket in a safe manner, such as by turning off the breaker, and contact your Brother dealer or Brother customer service.



Brother strongly recommends that you DO NOT use any type of extension cord. Failure to observe these precautions could cause a fire, electrical shock, or damage to the unit.



When disconnecting the AC Adapter from the machine or from the electrical socket, always hold the AC Adapter or the connector, not the cord, and pull firmly.

Failure to do so may result in exposed or broken cord wires or fire.



Make sure that the AC Adapter is firmly plugged into a standard electrical socket. Do not use an electrical socket that is loose. If the AC Adapter is not completely plugged into the electrical socket, there is a danger of the adapter becoming hot and catching fire.



Always use the AC Adapter, and plug it into an electrical socket within the voltage range indicated in *Specifications* in the *Online User's Guide*. Failure to do so may result in an injury to yourself or others, or damage to the machine or other property. Brother does not assume any responsibility for any accident or damage resulting from not using the AC Adapter.



DO NOT connect the AC Adapter to other products.



DO NOT overload the AC Adapter.

### **CAUTION**

If you do not intend to use the machine for an extended period of time, unplug the USB cable from the computer and the AC Adapter from the electrical socket.

## Servicing the unit

DO NOT attempt to service the unit yourself. Opening or removing covers may expose you to dangerous voltages and other risks, and may void your warranty. Contact your Brother dealer or Brother customer service.

### **WARNING**



If the machine or the AC Adapter has been dropped or the casing has been damaged, there may be the possibility of an electrical shock or fire. Unplug the USB cable from the computer and the AC Adapter from the electrical socket and contact your Brother dealer or Brother customer service.



If the machine or the AC Adapter becomes unusually hot, releases smoke, generates any strong smells, or if you accidentally spill any liquid on it, immediately unplug the USB cable from the computer and the AC Adapter from the electrical socket. Contact your Brother dealer or Brother customer service.



## IMPORTANT

If the unit does not operate normally when the operating instructions are followed, adjust only those controls that are covered by the operating instructions. Incorrect adjustment of other controls may result in damage, and will often require extensive work by a qualified technician to restore the unit to normal operation.

## Product Warranty & Liability

Nothing in this guide shall affect any existing product warranty or be construed as granting any additional product warranty. Failure to follow the safety instructions in this guide may invalidate your product's warranty.

## WARNING

### For users using the AC Adapter (SA-AD-001):

Use only the AC Adapter with this machine.

Output of the external power source shall be complied with ES1, PS2 or LPS requirements, output rating between 5 V d.c., minimum 3 A, with minimum operating ambient 35°C, altitude 5000m and has to be evaluated according to IEC/EN 60950-1 and/or IEC/EN 62368-1.

Ensure to connect the power cord of power adapter to a socket-outlet with earthing connection.

### Disconnect device

When using the AC Adapter, this product must be installed near an electrical socket that is easily accessible.

## Declaration of Conformity (Europe and Turkey only)

We, Brother Industries, Ltd.  
15-1 Naeshiro-cho, Mizuho-ku, Nagoya 467-8561  
Japan

declare that these products are in conformity with the relevant EU harmonization legislation (Europe and Turkey only) and UK legislation (Great Britain only).

The Declaration of Conformity (DoC) can be downloaded from our website. Visit [support.brother.com/manuals](http://support.brother.com/manuals).

## UK Declaration of Conformity for Radio Equipment Regulation 2017 (Great Britain only) (Applicable to Models with Radio Interfaces)

We, Brother Industries, Ltd.  
15-1 Naeshiro-cho, Mizuho-ku, Nagoya 467-8561  
Japan

declare that these products are in conformity with the provisions of the Radio Equipment Regulation 2017. A copy of the Declaration of Conformity can be downloaded by following the instructions in the Declaration of Conformity (Europe and Turkey only) section.

## UK Statements of Compliance for the Product Security and Telecommunications Infrastructure (Security Requirements for Relevant Connectable Products) Regulations 2023

We, Brother Industries, Ltd.  
15-1, Naeshiro-cho, Mizuho-ku, Nagoya 467-8561,  
Japan

declare that these products are in conformity with the provisions of the Product Security and Telecommunications Infrastructure (Security Requirements for Relevant Connectable Products) Regulations 2023.

A copy of the Statements of Compliance can be downloaded by following the instructions in the Declaration of Conformity (Europe Only) section.

## EU Declaration of Conformity for RE Directive 2014/53/EU (Europe and Turkey only) (Applicable to Models with Radio Interfaces)

We, Brother Industries, Ltd.  
15-1 Naeshiro-cho, Mizuho-ku, Nagoya 467-8561  
Japan

declare that these products are in conformity with the provisions of the RE Directive 2014/53/EU. A copy of the Declaration of Conformity can be downloaded by following the instructions in the Declaration of Conformity (Europe and Turkey only) section.

## Wireless LAN (Models with the wireless LAN function only)

This scanner supports a wireless interface.

Frequency band(s): 2400 MHz - 2483.5 MHz



Maximum radio-frequency power transmitted in the frequency band(s): Less than 20 dBm (e.i.r.p.)

## Information for compliance with Commission Regulation 801/2013

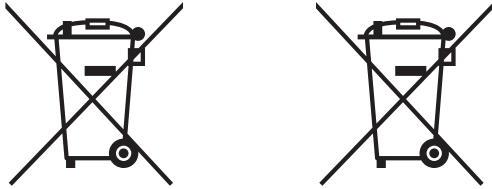
Model	Power consumption* (Networked Standby mode)
ADS-1300	Approx. 1.2 W
ADS-1800W	Approx. 2.0 W

\* All network ports activated and connected

## Wireless LAN Enable/Disable (ADS-1800W only)

- 1 Press  [Settings] > [Network] > [WLAN (Wi-Fi)] > [WLAN (Wi-Fi) Enable].
- 2 Press [On] (or [Off]).
- 3 Press .

## Recycling information in accordance with the WEEE and Battery Directives



Product mark

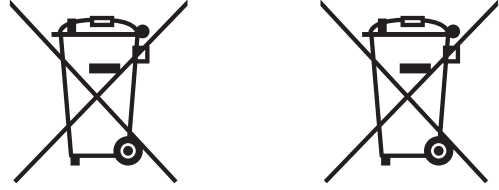


Battery mark

Europe only

The product/battery is marked with one of the above recycling symbols. It indicates that at the end of the life of the product/battery, you should dispose of it separately at an appropriate collection point and not place it in the normal domestic waste stream.

## WEEE ve Pil Direktifleriyle uyumlu geri dönüşüm bilgileri



Ürün markası

Pil markası

Sadece Avrupa

Ürün/pil yukarıdaki geri dönüşüm simgelerinden bir tanesinin işaretini taşımaktadır. Bu, ürün/pil ömrünün sonunda ürünün uygun bir toplama noktasına ayrıca atmalısınız ve normal ev atıklarıyla birlikte atmamanız gerekliliğini, belirtmektedir. Kullanıcı tarafından değiştirilebilen pilleri kullanan ürünlerle ilgili kullanım kılavuzundaki değiştirme bilgilerine bakınız.

## Türkiye RoHS Uygunluk Bildirisi

EEE Yönetmeliğine Uygundur.

## Trademarks

Mac is a trademark of Apple Inc., registered in the U.S. and other countries.

Wi-Fi is a registered trademark of Wi-Fi Alliance®.

Each company whose software title is mentioned in this manual has a Software License Agreement specific to its proprietary programs.

USB Type-C® is registered trademarks of USB Implementers Forum.

**Any trade names and product names of companies appearing on Brother products, related documents and any other materials are all trademarks or registered trademarks of those respective companies.**

## Copyright and License

© 2023 Brother Industries, Ltd. All rights reserved.



## Brother customer service

### Customer service

Visit [www.brother.com](http://www.brother.com) for contact information for your local Brother office.

### Service centre locations

For service centres in Europe, contact your local Brother office. Address and telephone contact information for European offices can be found at [www.brother.com](http://www.brother.com) by selecting your country.

## Unlawful use of scanning equipment

It is an offence to make reproductions of certain items or documents with the intent to commit fraud. The following is a non-exhaustive list of documents which it may be unlawful to produce copies of. We suggest you check with your legal adviser and/or the relevant legal authorities if in doubt about a particular item or document:

- Currency
- Bonds or other certificates of debt
- Certificates of deposit
- Armed forces service or draft papers
- Passports
- Postage stamps (cancelled or uncanceled)
- Immigration papers
- Welfare documents
- Cheques or drafts drawn by governmental agencies
- Identifying badges or insignias

Copyrighted works cannot be copied lawfully, subject to the “fair dealing” exception relating to sections of a copyrighted work. Multiple copies would indicate improper use. Works of art should be considered the equivalent of copyrighted works.

## Disclaimer

Brother disclaims any warranties with respect to avoidance, mitigation or non-occurrence of any breakdowns, malfunctions, system crashes, virus infections, damage and disappearances of data, and any other kind of errors by using this product. AS LONG AS PERMITTED BY APPLICABLE LAWS, BROTHER WILL NOT BE LIABLE FOR ANY LOST REVENUES OR INDIRECT, SPECIAL, INCIDENTAL, CONSEQUENTIAL, EXEMPLARY, OR PUNITIVE DAMAGES OF THE CUSTOMERS OR ANY OTHER THIRD PARTY.

# brother

Visit us on the World Wide Web  
[www.brother.com](http://www.brother.com)



[www.brotherearth.com](http://www.brotherearth.com)

Month of publication: 12/2023

UK Version A