

The latest manuals are available at the Brother support website: support.brother.com/manuals.

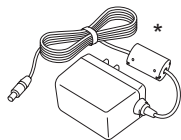
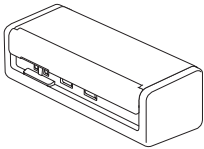
Please read the **Product Safety Guide**, located later in this document, before you set up your machine.

⚠ WARNING

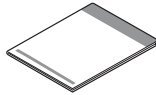
WARNING indicates a potentially hazardous situation which, if not avoided, could result in death or serious injuries.

1 Unpack the machine and check the components

The components included in the box may differ depending on your country. Remove the protective tape and film covering the machine. Open the Top Cover, and then remove the protective tape.



*The AC Adapter is included in some countries.



Quick Setup Guide/Product Safety Guide



⚠ WARNING

- This product is packaged in a plastic bag. To avoid suffocation, keep plastic bags away from babies and children. Do not use the bag in cribs, beds, carriages, or playpens. The bag is not a toy.
- If you plan to use an AC Adapter, we recommend using the Brother AC Adapter. This AC Adapter is configured to the exact voltage and current requirements of this Brother machine. Use of unsupported AC Adapters may result in damage to your product.

NOTE

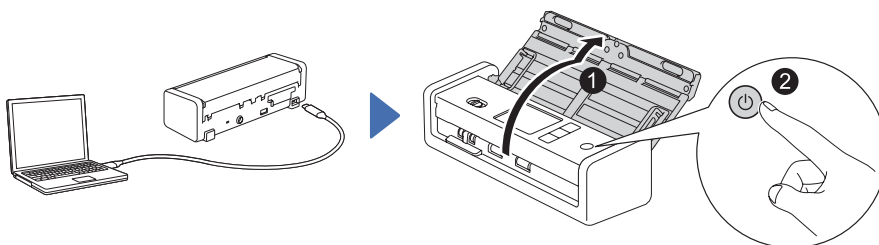
- We recommend saving the original packaging in case you must ship your machine.
- For Mexico and countries in Southern America: The AC Adapter and USB Type-A to USB Type-C® Cable are included, but the USB Type-C Cable is not included.
- The AC Adapter is not included in all countries, but is available as an optional accessory. Look for part number LK-1001C (the AC Adapter (SA-AD-001) and a USB Type-A to USB Type-C Cable) on the Brother website.
- For more information, see your model's *Online User's Guide* at support.brother.com/manuals.

For Network Users: Important Notice for Network Security (ADS-1350W/ADS-1800W only)

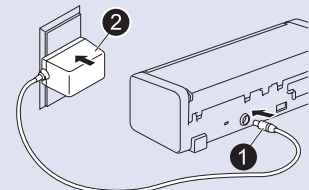
Your machine's default password is located on the bottom of the machine and marked "Pwd". We recommend immediately changing the default password to use network tools/utilities securely and to protect your machine from unauthorized access.

Unless otherwise specified, illustrations in this guide show the ADS-1800W.

2 Connect the USB Cable



If using the AC Adapter:
Connect the AC Adapter as shown.



NOTE

- Before loading documents into the Automatic Document Feeder (ADF), fan the paper and align its edges as shown in the illustration on the machine's Top Cover.
- Use the USB Type-C Cable included in the box to connect to your scanner.
- If you purchase a USB Type-C Cable separately, use a Certified USB Cable.
- Make sure to use a computer that has a USB Type-C port that supports 15 W output or higher.
- For Mexico and countries in Southern America: Use only the AC Adapter supplied with this product.

3 Select your language (ADS-1800W only)

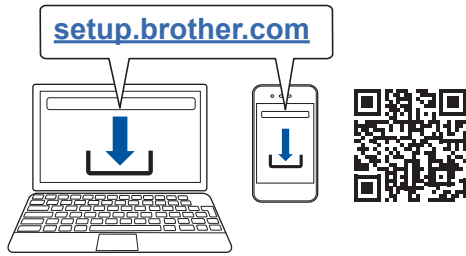
Press [Settings] > [Initial Setup] > [Local Language] and select your language. Press .

4 Connect your machine and install software

Select your preferred scanning method and choose your connection method.

A Using your scanner with your computer or mobile device

Visit setup.brother.com to download and install the required Brother software.



For Mac: Visit support.brother.com/mac to download the required Brother software.

Follow the on-screen instructions to continue installation.

For Mobile Devices (ADS-1350W/ADS-1800W only): Set up the connection manually.

Setup Finished

When finished, restart your computer. If not successful, set up the connection manually.

For detailed scanning instructions, see the *Online User's Guide* at support.brother.com/manuals.

B Using your scanner as a standalone device (ADS-1350W/ADS-1800W only)

Connect your machine to your network via Wi-Fi®.


You can set up your Wi-Fi connection using either the machine's control panel or your computer.

This machine supports only 2.4 GHz.

Manual Wireless Setup (ADS-1350W/ADS-1800W only)

If you do not have a computer connected to the network or if you cannot connect your machine using your computer, try to set up the connection manually.


ADS-1350W

Press and hold  for two seconds.

When the Wi-Fi Indicator starts blinking, press the WPS button on your wireless access point/router.

When the wireless setup is successful, the Wi-Fi Indicator stops blinking and remains lit.

ADS-1800W

Press  > [Find Wi-Fi Network] > [Yes].

Select the SSID (Network Name). Enter the Network Key (Password).

When the wireless setup is successful, the LCD displays [Connected].

If you cannot find your SSID or Network Key, ask your network administrator or wireless access point/router manufacturer.










NOTE

- If setup is not successful, restart your machine and the wireless access point/router, and then repeat these steps.
- If using a computer, go back to **A** to install software.

NOTE

If setup is still not successful, visit support.brother.com for FAQs, Troubleshooting, and manuals. For product specifications, see the *Online User's Guide*.

Power Shortage Error

LED Status (ADS-1300/ADS-1350W)	LCD Status (ADS-1800W)	Scan Operation	Description
 Off  Off  Lit	The Home Screen appears.	✓	The machine works correctly, running on over 15 W power.
 Flashing  Flashing  Off	The error message "Power Shortage (Code: 01)" appears.	×	The machine does not work due to a power shortage (less than 15 W). Visit support.brother.com for FAQs & Troubleshooting or see your model's <i>Online User's Guide</i> at support.brother.com/manuals .
 Off  Off  Off	The machine is not turned on and nothing appears.	×	

DON'T FORGET TO REGISTER!

Registering your product will provide purchase confirmation, proof of ownership and, if you choose, allow us to notify you of product enhancements and special offers!

You can register online at: www.registeryourbrother.com (USA)



Product Safety Guide

Failure to follow these instructions may result in an increased risk of personal injury or damage to property, including through fire, electrical shock, burns, or suffocation.

Symbols and conventions used in the documentation

The following symbols and conventions are used throughout the documentation.

WARNING

WARNING indicates a potentially hazardous situation which, if not avoided, could result in death or serious injuries.

CAUTION








CAUTION indicates a potentially hazardous situation which, if not avoided, may result in minor or moderate injuries.

IMPORTANT

IMPORTANT indicates a potentially hazardous situation which, if not avoided, may result in damage to property or loss of product functionality.

NOTE

Notes tell you how you should respond to a situation that may arise or give tips about how the operation works with other features.

-  Prohibition icons indicate actions that must not be performed.
-  This icon indicates that flammable sprays must not be used.
-  This icon indicates that organic solvents, alcohol, or other liquids must not be used.
-  Electrical Hazard icons alert you to possible electrical shock.
-  Fire Hazard icons alert you to the possibility of fire.
-  This icon alerts you to the areas that contain moving parts.
-  Unplug icons indicate that you should unplug the machine.

(ADS-1800W only)

Courier New

Text in Courier New font identifies messages on the LCD of the machine.

Follow all warnings and instructions marked on the machine.

NOTE

The illustrations in this guide show the ADS-1800W.

Compilation and Publication

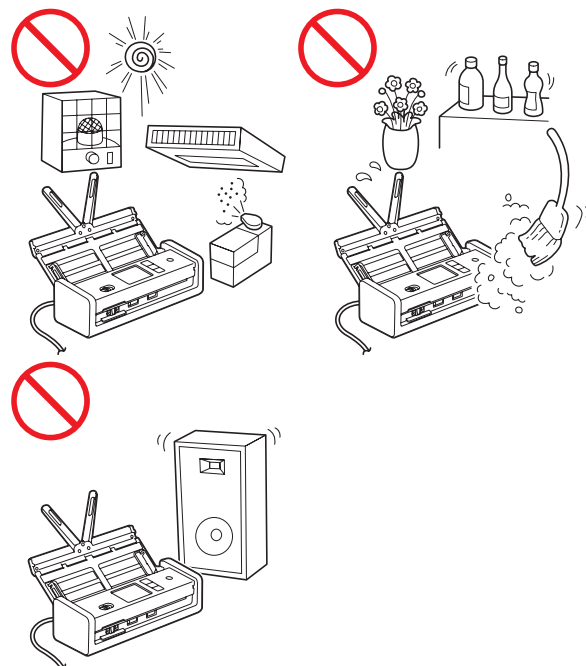
Under the supervision of Brother Industries, Ltd., this manual has been compiled and published, covering the latest product descriptions and specifications.

The contents of this manual and the specifications of this product are subject to change without notice.

Brother reserves the right to make changes without notice in the specifications and materials contained herein and shall not be responsible for any damages (including consequential) caused by reliance on the materials presented, including but not limited to typographical and other errors relating to the publication.

Choosing a location

Place your machine and AC Adapter (hereinafter collectively referred to as “the unit”) on a flat, level, stable surface that is free of vibration and shocks, such as a desk. Choose a location where the temperature remains between 41 °F and 95 °F (5 °C and 35 °C) and the humidity is between 20% to 80% (without condensation).



WARNING



For users using the AC Adapter (SA-AD-001):

The AC Adapter should be connected to an AC power source within the range indicated on *Specifications* in the *Online User's Guide*. DO NOT connect it to a DC power source or inverter. Doing this might cause an electrical shock or a risk of fire. If you are not sure what kind of power source you have, contact a qualified electrician.



DO NOT expose the unit to direct sunlight, excessive heat, open flames, corrosive gasses, moisture or dust.

DO NOT place the unit on a carpet or rug, as this will expose it to dust. Exposing the unit to dust may create a risk of an electrical short or fire. It may also damage the unit and/or render it inoperable.



DO NOT place the unit near heaters, air conditioners, electric fans, refrigerators, radiators, or water. Doing so may create the risk of a short circuit or fire should water come into contact with the unit (including condensation from heating, air conditioning, and/or ventilation equipment that may be sufficient to create a short circuit or fire).



DO NOT place the unit near chemicals or in a place where chemicals could be spilled on it. Should chemicals come into contact with the unit, there may be a risk of fire or electrical shock. In particular, organic solvents or liquids such as benzene, paint thinner, polish remover, or deodorizer may melt or dissolve the plastic cover and/or cables, resulting in a risk of fire or electrical shock. These or other chemicals may also cause the unit to malfunction or become discolored.



The product should be placed so as not to come into contact with any wall or other device. Otherwise, it could create a risk of overheating and/or fire. Clearance is needed between the product and the wall.

Make sure that no part of the unit protrudes from the desk or stand where the unit is located. Make sure that the unit is located on a flat, level, and stable surface free from vibration. Failure to observe these precautions could cause the unit to fall, causing injury to you or to others and serious damage to the unit.

CAUTION

Avoid placing the unit in a high-traffic area. If you must place it in a high-traffic area, ensure that the unit is in a safe location where it cannot be accidentally knocked over, which could cause injury to you or others and serious damage to the unit.

Ensure that cables and cords leading to the unit are secured so as not to pose a trip hazard.

IMPORTANT

- DO NOT place your machine next to sources of interference, such as speakers or the base units of non-Brother cordless telephones. Doing so may interfere with the operation of the machine's electronic components.
- DO NOT connect the unit to an AC power outlet controlled by wall switches or automatic timers. Disruption of power can delete information from the machine's memory, and repeated cycling of the power can damage the unit.

To use the unit safely

WARNING

ELECTRICAL HAZARDS

Failure to follow the warnings in this section may create the risk of an electrical shock. In addition, you could create the risk of an electrical short, which may create the risk of a fire.



There are high-voltage electrodes inside the machine and the AC Adapter. Before you access the inside of the machine, make sure you have unplugged the USB cable from the computer and the AC Adapter from the AC power outlet.



DO NOT push objects of any kind into the unit through slots or openings in the machine, as they may touch dangerous voltage points or short out parts.



DO NOT continue using the machine or the AC Adapter if it has been dropped or the machine has been damaged. Instead, unplug the USB cable from the computer and the AC Adapter from the AC power outlet and contact Brother Authorized Service Personnel.



If water, other liquids, or metal objects get inside the machine or the AC Adapter, immediately unplug the USB cable from the computer and the AC Adapter from the AC power outlet and contact Brother Authorized Service Personnel.

AC Adapter Safety (For users using the AC Adapter (SA-AD-001))



Only use the AC Adapter with the machine. Only plug the AC Adapter into a power outlet with voltage that is within the range indicated on *Specifications* in the *Online User's Guide*. Failure to do so may result in injury to yourself or others, or damage to the machine or other property. Brother does not assume any responsibility for any damage resulting from using an AC Adapter other than the one specified.



DO NOT use a damaged AC Adapter.



DO NOT damage, modify, or place heavy objects on the AC Adapter.



DO NOT forcibly bend or pull the cord of the AC Adapter.



DO NOT drop, hit, or otherwise damage the AC Adapter.



DO NOT use or touch the unit during a thunderstorm when the AC Adapter is plugged in. There may be a risk of electrical shock from lightning when the machine is used during a thunderstorm.



When disconnecting the AC Adapter from the machine or from the power outlet, always hold the AC Adapter or the connector, not the cable, and pull firmly.

Failure to do so may result in exposed or broken cable wires and/or create a risk of fire.



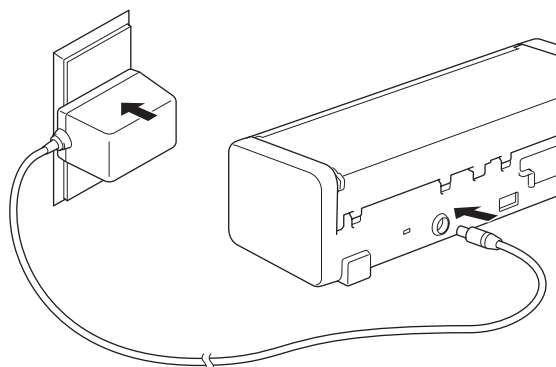
If you notice any damage or abnormalities while using the AC Adapter, do not touch it. Disconnect the power supply from the AC power outlet in a safe manner, such as by turning off the breaker, and contact Brother Authorized Service Personnel.



Brother strongly recommends that you DO NOT use any type of extension cord.



Make sure that the AC Adapter is firmly plugged into a standard power outlet. Do not use an outlet that is loose. If the AC Adapter is not completely plugged into the power outlet and adapter block, the adapter may become hot and/or catch fire.



(Example for USA)



DO NOT exceed the rated input or output listed on the rated label on the AC Adapter.



DO NOT connect the AC Adapter to other products.

FIRE HAZARDS

Failure to follow the warnings in this section may create the risk of a fire.



When cleaning the inside or outside of the unit, DO NOT use flammable substances, any type of spray, any organic solvent, alcohol, ammonia, or any liquid that contains alcohol or ammonia. Doing this may cause a risk of fire or electrical shock.



Do not disassemble or modify the unit, otherwise fire or electrical shock may result. If the unit requires repair, contact Brother Authorized Service Personnel.



If the machine or the AC Adapter becomes hot, releases smoke, or generates any strong smells, immediately unplug the USB cable from the computer and the AC Adapter from the AC power outlet and call Brother Customer Service.

For users using the AC Adapter (SA-AD-001):

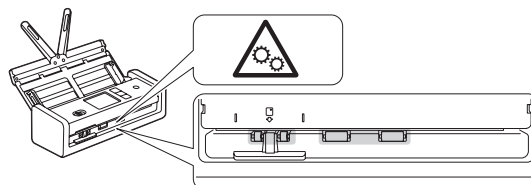


DO NOT touch the AC Adapter or handle the power plug with wet hands.

CAUTION

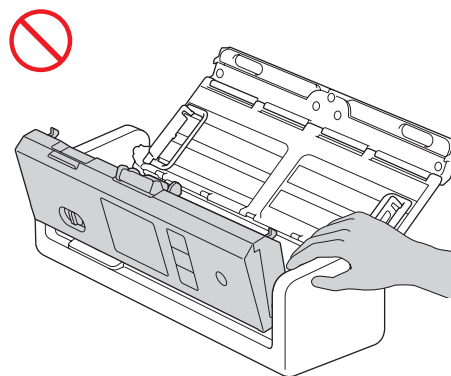
DO NOT put pressure or weight on the unit or use it for any purpose beyond its intended purpose.

Wait until pages have exited the machine before taking them out, or you could cause injury to your fingers by trapping them in a roller.



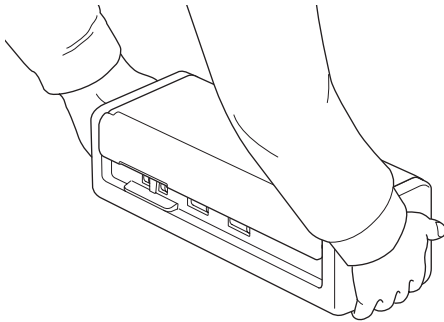
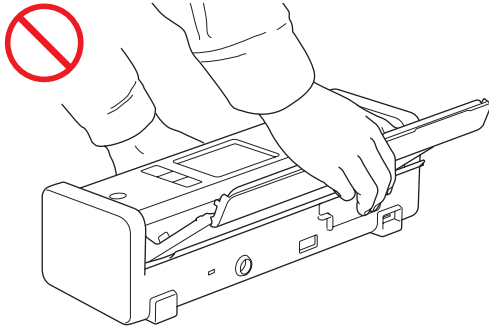
Be careful not to cut your fingers on the edge of the Carrier Sheet. The Carrier Sheet is not included, but is available as an optional accessory. Look for part number CS-A3301 on the Brother website.

Some areas of the machine can cause injury if the Cover (shaded area shown) is closed with force. Be careful when placing your hand in or near the shaded area.



Product Safety Guide

DO NOT carry the machine by holding the Automatic Document Feeder (ADF). Doing this may cause the Automatic Document Feeder (ADF) to detach from the machine. Only carry the machine by placing your hands under the entire machine.



When multiple devices, including this product, are connected to a computer using USB cables, you may feel an electric charge when you touch metal parts of the product.

If you do not intend to use the machine for an extended period of time, unplug the USB cable from the computer or the AC Adapter from the power outlet.

DO NOT swing the USB cable or the AC Adapter around or play with it. Doing so may result in injury to yourself or others.

WARNING

Use caution when operating the machine to prevent clothing, hair, or other accessories from being drawn into the machine, otherwise injury may result. In the event that an object is drawn into the machine, immediately disconnect the machine from the power source.

IMPORTANT

- Disruption of power can delete data in the machine's memory.
- DO NOT put objects on top of the unit.
- If the machine does not operate normally when the operating instructions are followed, adjust only those controls that are covered by the operating instructions. Improper adjustment of other controls may result in damage or minor exposure to electromagnetic waves and will often require extensive work by a qualified technician to restore the machine to normal operation.
- A distinct change in the machine's performance may indicate a need for service.
- (ADS-1800W only)
DO NOT touch the LCD while the machine is booting up. Doing this may cause an error.

Important Safety Instructions

DO NOT attempt to service the unit yourself. Disassembling the unit may expose you to dangerous voltage points and other risks and may void your warranty. Refer all servicing to a Brother Authorized Service Center. For the location of your nearest Brother Authorized Service Center, please call:

In USA: 1-877-BROTHER (1-877-276-8437)

Regulation

WARNING

Disconnect device

When using the AC Adapter, this product must be installed near an AC power outlet that is easily accessible.

IMPORTANT

- Brother cannot accept any financial or other responsibilities that may be the result of your use of this information, including direct, special or consequential damages. There are no warranties extended or granted by this document.
- This machine has been certified to comply with FCC standards, which are applied to the USA only.

Federal Communications Commission (FCC) Supplier's Declaration of Conformity (USA only)

Responsible Party: Brother International Corporation
200 Crossing Boulevard
Bridgewater, NJ 08807-0911 USA
TEL: (908) 704-1700

declares, that the products

Product Name: ADS-1300/ADS-1350W/
ADS-1800W

comply with Part 15 of the FCC Rules. Operation is subject to the following two conditions: (1) This device may not cause harmful interference, and (2) this device must accept any interference received, including interference that may cause undesired operation.

This equipment has been tested and found to comply with the limits for a Class B digital device, pursuant to Part 15 of the FCC Rules. These limits are designed to provide reasonable protection against harmful interference in a residential installation. This equipment generates, uses, and can radiate radio frequency energy and, if not installed and used in accordance with the instructions, may cause harmful interference to radio communications. However, there is no guarantee that interference will not occur in a particular installation. If this equipment does cause harmful interference to radio or television reception, which can be determined by turning the equipment off and on, the user is encouraged to try to correct the interference by one or more of the following measures:

- Reorient or relocate the receiving antenna.
- Increase the separation between the equipment and receiver.
- Connect the equipment to an outlet on a circuit different from that to which the receiver is connected.
- Consult with an experienced radio/TV technician for help.

(Wireless network models only)

- This transmitter must not be co-located or operated in conjunction with any other antenna or transmitter.

IMPORTANT

- Changes or modifications not expressly approved by Brother Industries, Ltd. could void the user's authority to operate the equipment.
- A shielded interface cable should be used to ensure compliance with the limits for a Class B digital device.

Industry Canada Compliance Statement (Canada only)

This device complies with Industry Canada's licenceexempt RSSs. Operation is subject to the following two conditions: (1) this device may not cause interference, and (2) this device must accept any interference, including interference that may cause undesired operation of the device.

Le present appareil est conforme aux CNR d'Industrie Canada applicables aux appareils radio exempts de licence. L'exploitation est autorisee aux deux conditions suivantes : (1) l'appareil ne doit pas produire de brouillage, et (2) l'utilisateur de l'appareil doit accepter tout brouillage radioelectrique subi, meme si le brouillage est susceptible d'en compromettre le fonctionnement.

For use in the USA or Canada only

These machines are made for use in the USA and Canada only. We cannot recommend using them overseas because the power requirements of your machine may not be compatible with the power available in foreign countries. Using USA or Canada models overseas is at your own risk and may void your warranty.

International ENERGY STAR® Qualification Statement (USA and Canada only)

The purpose of the International ENERGY STAR® Program is to promote the development and popularization of energy-efficient equipment.

As an ENERGY STAR® Partner, Brother Industries, Ltd. has determined that this product meets the ENERGY STAR® specifications for energy efficiency.



RF Exposure Notice (USA or Canada only) (Wireless models only)

This equipment complies with FCC/IC radiation exposure limits set forth for an uncontrolled environment and meets the FCC radio frequency (RF) Exposure Guidelines and RSS-102 of the IC radio frequency (RF) Exposure rules. This equipment should be installed and operated keeping the radiator at least 20 cm or more away from person's body.

Cet équipement est conforme aux limites d'exposition aux rayonnements énoncées pour un environnement non contrôlé et respecte les lignes directrices d'exposition aux fréquences radioélectriques (RF) de la FCC et les règles d'exposition aux fréquences radioélectriques (RF) CNR-102 de l'IC. Cet équipement doit être installé et utilisé en gardant une distance de 20 cm ou plus entre le radiateur et le corps humain.

Wireless connection (Mexico only) (Wireless models only)

The operation of this equipment is subject to the following two conditions:

(1) it is possible that this equipment or device may not cause harmful interference, and (2) this equipment or device must accept any interference, including interference that may cause undesired operation.

Trademarks

Mac is a trademark of Apple Inc., registered in the U.S. and other countries.

Wi-Fi is a registered trademark of Wi-Fi Alliance®.

Each company whose software title is mentioned in this manual has a Software License Agreement specific to its proprietary programs.

USB Type-C® is registered trademarks of USB Implementers Forum.

Any trade names and product names of companies appearing on Brother products, related documents and any other materials are all trademarks or registered trademarks of those respective companies.

Copyright and License

© 2023 Brother Industries, Ltd. All rights reserved.

Legal Limitations for Copying or Scanning

Color reproductions of certain documents are illegal and may result in either criminal or civil liability.

The listing below is intended to be a guide rather than a complete listing of every possible prohibition. In case of doubt, we suggest that you consult with the appropriate authority or advisor with regard to the specific document.

The following documents issued by the United States/Canadian Government or any of its Agencies, States, Territories, or Provinces may not be copied or scanned.

- Money
- Bonds or other certificates of indebtedness
- Certificates of Deposit
- Internal Revenue Stamps (canceled or uncanceled)
- Selective Service or draft papers
- Passports
- United States/Canadian Postage Stamps (canceled or uncanceled)
- Food Stamps
- Immigration Papers
- Checks or drafts drawn by Governmental agencies
- Identifying badges or insignias
- Licenses and Certificates of Title to motor vehicles, under certain State/Provincial law

Copying or Scanning copyrighted works may be regulated by Federal, State, or local law. For more information, consult an appropriate authority or advisor.

To request a printed version of the Online User's Guide, please contact us at:

Chile and Bolivia:

Tel: 800-541-000 / Email: info@brother.cl

Peru:

Tel: 0800-00-066 / Email: info@brother.com.pe

Mexico:

Tel: 01-800-759-6000 / 01-800-759-8000

URL: www.brother.com.mx

Argentina, Paraguay and Uruguay:

In Argentina: www.brother.com.ar

In Paraguay: www.brother.com.py

In Uruguay: www.brother.com.uy

Other countries in Latin America and the Caribbean:

Tel: 888-800-7303* (Eastern Standard Time, USA.)

Email: CALASales@brother.com

* AT&T USADirect® Service is not available in all locations. Calling this number may incur charges. Contact your local telephone company for more information.

Disclaimer

Brother disclaims any warranties with respect to avoidance, mitigation or non-occurrence of any breakdowns, malfunctions, system crashes, hang-ups, virus infections, damage and disappearances of data, and any other kind of errors by using this product. AS LONG AS PERMITTED BY APPLICABLE LAWS, BROTHER WILL NOT BE LIABLE FOR ANY LOST REVENUES OR INDIRECT, SPECIAL, INCIDENTAL, CONSEQUENTIAL, EXEMPLARY, OR PUNITIVE DAMAGES OF THE CUSTOMERS OR ANY OTHER THIRD PARTY.

brother

Visit us on the World Wide Web
www.brother.com

These machines are approved for use in the country of purchase only.
Local Brother companies or their dealers will support only machines purchased
in their own countries.



www.brotherearth.com

Month of publication: 09/2023

USA Version 0