



Operation Videos:
www.95105369.com

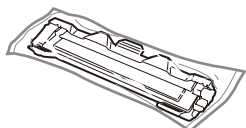
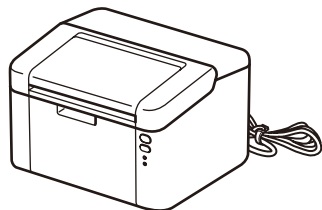


Installation & Using Videos

EN

Unpack the machine and check the components

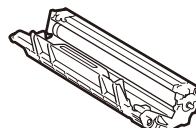
Remove the protective tape or film covering the machine and the supplies.



Toner Cartridge



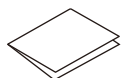
A5 Paper Long Edge Support



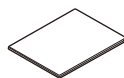
Drum Unit
(Installed in the machine)



USB Interface Cable



Quick Setup Guide



Product Safety Guide

NOTE:

• The available connection interfaces vary depending on the model.

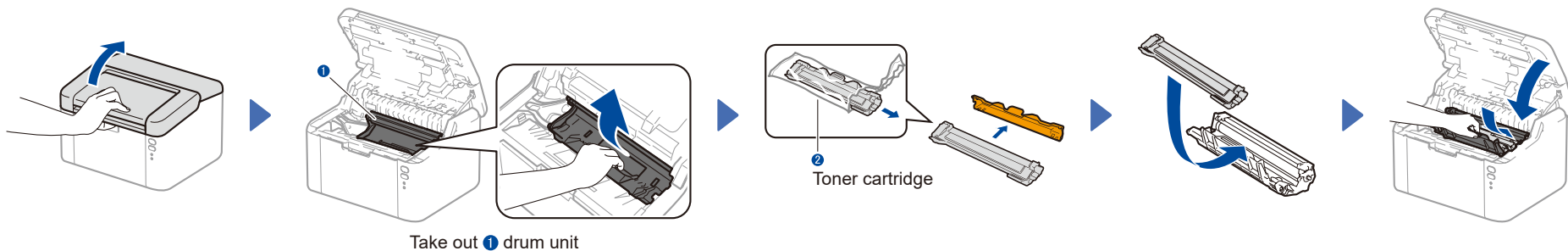
USB cable

We recommend using a USB 2.0 cable (Type A/B) that is no more than 2 metres long.

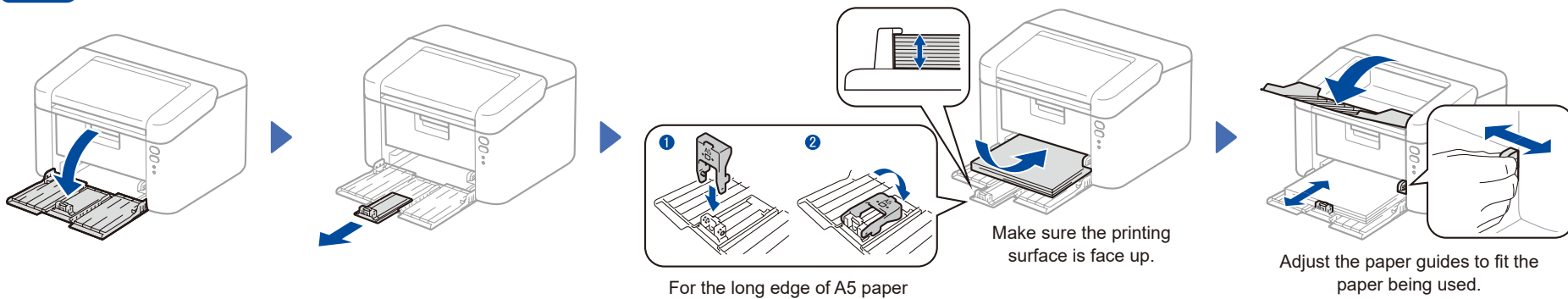
• The screens and images in this *Quick Setup Guide* show the HL-L1238W.

• Save all packing materials and the box in case you need to ship your machine.

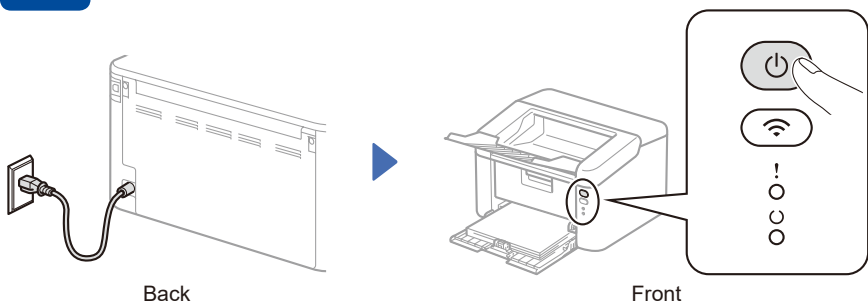
1 Remove the packing materials and install the toner cartridge



2 Load paper in the paper tray



3 Connect the power cord and turn the machine on



Printer LED Indications

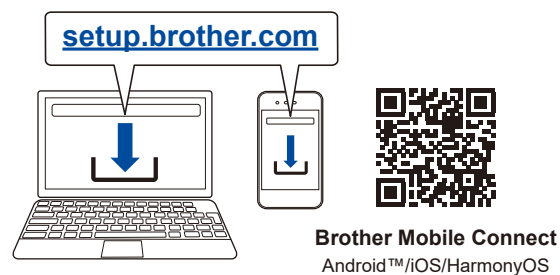
Blinking: ☀ or 🌱 ON: ● OFF: ○

	Power Off	Ready Data Remaining	Sleep Deep Sleep	Warming Up Cooling Down	Receiving Data	Toner Low	Replace Toner	Paper Jam	Drum End Soon Replace Drum
!	○	○	○	○	○	☀ ○	☀ ○	☀ ☀ ○	☀ ☀ ☀ ○
⏻	○	●	● Dimmed	🌱 1 second interval	🌱 0.5 second interval	●	○	○	●

4 Connect your computer or mobile device* to your machine

Follow these steps to complete the setup using one of the connection types available on your machine.

Visit setup.brother.com to download and install Brother software.



Follow the on-screen instructions and prompts.

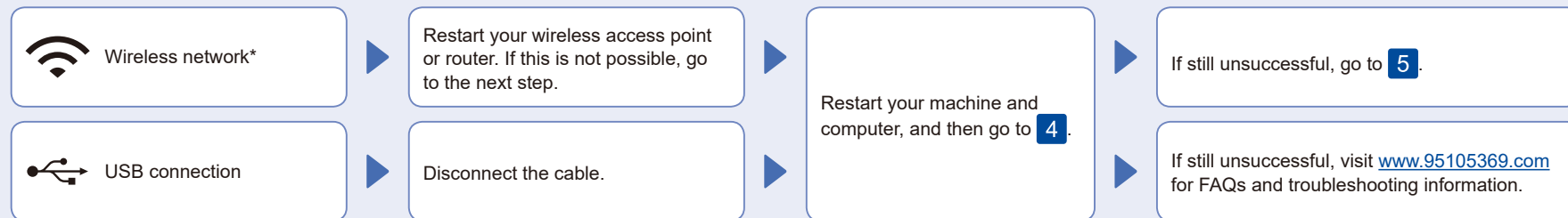
Setup Finished

You can now print using your machine.

Important Notice for Network Security*:

The default password to manage this machine's settings is located on the back of the machine and marked "Pwd". We recommend immediately changing the default password to protect your machine from unauthorised access.

Can't Connect? Check the following:

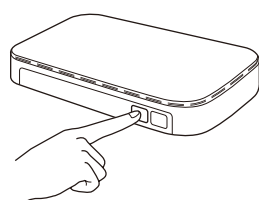


* Not available for HL-L1228.

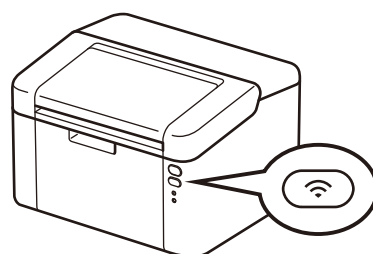
5 Manual wireless setup*

If the wireless setup is unsuccessful, set up the connection manually.

* Not available for HL-L1228.



Press the WPS button on your wireless LAN access point or router.



Press and hold the Wi-Fi button on your machine for about 2 seconds. The Wi-Fi button will light up when connected.

Go to **4** to install software.

If the setup is unsuccessful, restart your Brother machine and your wireless access point or router, and repeat **5**.
If still unsuccessful, visit www.95105369.com.

Setup Complete

Connect with WeChat

Your machine can print through an applet of WeChat, which is called “兄弟畅享印”. “兄弟畅享印” lets you wirelessly print photos and documents without the need to install an app or a driver.

Binding your printer before using WeChat print function for the first time. Please scan the QR Code on the right for operation instructions.

