

# Product Safety Guide

DCP-T230 / DCP-T236 / DCP-T430W / DCP-T435W / DCP-T436W / DCP-T530DW / DCP-T535DW / DCP-T536DW /  
DCP-T730DW / DCP-T735DW / DCP-T830DW / DCP-T835DW / MFC-T930DW / MFC-T935DW

Read this guide before attempting to operate the product, or before attempting any maintenance, and ensure that you follow all warnings and instructions marked on the product. If you have concerns about how to use your product safely after reading this guide, contact Brother customer service or your local Brother dealer. Failure to follow these instructions may result in an increased risk of personal injury or damage to property, including through fire, electrical shock, burns or suffocation. Brother shall not be liable for the damage caused where the product owner has failed to follow the instructions set out in this guide or on the product.

For more advanced instructions, information, and product specifications, see the *Online User's Guide* at [support.brother.com/manuals](http://support.brother.com/manuals).

## Symbols and Conventions Used in the Documentation

### WARNING

WARNING indicates a potentially hazardous situation which, if not avoided, could result in death or serious injuries.

### CAUTION

CAUTION indicates a potentially hazardous situation which, if not avoided, may result in minor or moderate injuries.

### IMPORTANT

IMPORTANT indicates a potentially hazardous situation which, if not avoided, may result in damage to property or loss of product functionality.

### NOTE

NOTE specifies the operating environment, conditions for installation, or special conditions of use.



Prohibition icons indicate actions that must not be performed.



This icon indicates that flammable sprays must not be used.



This icon indicates that organic solvents/liquids such as alcohol must not be used.



Electrical Hazard icons alert you to the possibility of an electric shock.



Fire Hazard icons alert you to the possibility of a fire.



Explosion Hazard icons alert you to the possibility of an explosion.



This icon alerts you to the possibility of being injured by moving parts.



This icon alerts you to the areas that contain moving parts.



This icon warns you not to swallow ink.



This icon indicates that the ink bottle must be held upright.

# Font Styles Used in the Documentation

The definitions of font style are as follows:

<b>Bold</b>	Bold typeface identifies specific buttons on the product's control panel or on the computer screen.
<i>Italics</i>	Italicised style emphasises an important point or refers you to a related topic.
Courier New	Text in Courier New font identifies messages on the LCD of the product.

## Compilation and Publication Notice

Not all models are available in all countries.

The illustrations in this guide show the MFC-T930DW.

This product's manuals have been compiled and published to provide the latest product safety information at the time of publication. The information contained in these manuals may be subject to change.

For the latest manuals, visit [support.brother.com](http://support.brother.com).

©2024 Brother Industries, Ltd. All rights reserved.

## Choose a Safe Location for Your Product

### WARNING



Choose a location where the temperature remains between 10°C and 35°C, the humidity is between 20% and 80%, and where there is no condensation.



Do not install or use in areas where explosive or electrically conductive dusts are generated.



DO NOT expose the product to direct sunlight, excessive heat, open flames, corrosive gasses, moisture, or dust. Doing so may create a risk of an electrical shock, short circuit, or fire, causing damage to the product and/or rendering it inoperable.



DO NOT place the product near chemicals or in a place where chemicals could be spilled on it. Should chemicals come into contact with the product, there may be a risk of fire or electrical shock. In particular, organic solvents or liquids such as benzene, paint thinner, polish remover, or deodoriser may melt or dissolve the plastic cover and/or cables, resulting in a risk of fire or electrical shock. These or other chemicals may cause the product to malfunction or become discoloured.

---

DO NOT place this product on an unstable surface, particularly if children are expected to be near the product. The product is heavy and may fall, causing injury to you or others and serious damage to the product. For products with scanning functionality, there is an added risk of injury if the scanner glass should break.

---

## CAUTION

Put your product on a flat, stable surface (such as a desk), that is free from vibration and shocks. Put the product near a telephone socket (models with the fax function only) and a standard grounded electrical socket.

---

Avoid placing your product in a busy area. If you must place it in a busy area, ensure that the product is in a safe location where it cannot be accidentally knocked over, which could cause injury to you or others and serious damage to the product.

---

Ensure that cables and cords leading to the product are secured so as not to pose a tripping hazard.

---

DO NOT place heavy objects on the product.

---

DO NOT place any objects around the product. Such objects block the access to the electrical socket in case of emergency. It is important that the product can be unplugged whenever needed.

---

## IMPORTANT

---

- DO NOT place your product next to devices that contain magnets or generate magnetic fields. Doing so may interfere with the operation of the product, causing print quality problems.
- DO NOT tip or turn the product upside down after ink tanks are filled. Doing so may cause ink spillage and internal damage to the product.
- DO NOT place your product next to sources of interference, such as speakers or the base units of cordless telephones. Doing so may interfere with the operation of the product's electronic components.

- DO NOT place anything in front of the product that will block printed pages or received faxes (models with the fax function only).
- 

## Connect the Product Safely

### WARNING



#### ELECTRICAL HAZARDS

*Failure to follow the warnings in this section may create the risk of an electrical shock. In addition, you could cause a short circuit, which may create the risk of fire.*

---



There are high-voltage electrodes inside the product. Before you access the inside of the product, including for routine maintenance such as cleaning, make sure you have unplugged the telephone line cord first (models with the fax function only) and then the power cord from the electrical socket, as well as any telephone/RJ-11 (models with the fax function only) or Ethernet/RJ-45 cables (network models only) from the product.

DO NOT push objects of any kind into this product through slots or openings in the product, as they may touch dangerous voltage points or short-out parts.

---



DO NOT handle the plug with wet hands. Doing this might cause an electrical shock.

---



Always make sure the plug is fully inserted. DO NOT use the product or handle the cord if the cord has become worn or frayed.

---



Unplug the power plug regularly to clean it. Use a dry cloth to clean the base of the plug pins and between the pins. If the power plug is plugged into the socket over a long period, dust accumulates around the plug blades/pins, which may cause a short circuit, resulting in a fire.

---



DO NOT drop any metal objects or any type of liquid on the product's power plug. It may cause an electrical shock or a fire.



This product should be connected to an AC power source within the range indicated on the rating label on your machine. DO NOT connect it to a DC power source or inverter. If you are not sure what kind of power source you have, contact a qualified electrician.

## Use the Product Safely

### WARNING

Plastic bags are used in the packing of this product. Plastic bags are not toys. To avoid the danger of suffocation, keep these bags away from babies and children, and dispose of them correctly.



#### ELECTRICAL HAZARDS

*Failure to follow the warnings in this section may create the risk of an electrical shock. In addition, you could cause a short circuit, which may lead to fire.*



DO NOT dismantle this product. Dismantling this product could cause a fire or electrical shock.

DO NOT attempt to service this product yourself. Opening or removing covers may expose you to dangerous voltage points and other risks and may void your warranty. Refer all servicing to Brother customer service or your local Brother dealer.



If the product has been dropped or the casing has been damaged, there may be the possibility of an electrical shock. Unplug the product from the electrical socket and contact Brother customer service or your local Brother dealer.



If water, other liquids, or metal objects get inside the product, immediately unplug the product from the electrical socket and contact Brother customer service or your local Brother dealer.



DO NOT use this product during a thunderstorm. There may be a remote risk of an electrical shock from lightning.

---

## FIRE HAZARDS

*Failure to follow the warnings in this section may create the risk of fire.*



DO NOT use flammable substances, any type of spray, or an organic solvent/liquid containing alcohol or ammonia to clean the inside or outside of the product. Doing so could cause a fire. Instead, use only a dry, lint-free cloth. For instructions on how to clean the product, see the *Online User's Guide*.

---

(Models with the Wireless LAN function only)

DO NOT use the product near any medical electrical equipment. The radio waves emitted from the product may affect medical electrical equipment and cause a malfunction, which may result in accident or injury.

---

For users with pacemakers:

This product generates a weak magnetic field. If you feel anything wrong with the operation of your pacemaker when near the product, move away from the product and consult a doctor immediately.

---



DO NOT place metal objects, such as clips, staples, or jewellery on the product. If these objects contact the electrical parts inside the product, it may cause a fire or electrical shock.

---



DO NOT place a container holding water or liquid on the product. The water or liquid in the container may spill into the product, making contact with the electrical parts inside the product, which may cause a fire or electrical shock.

---



If the product becomes unusually hot, releases smoke, generates any strong smells, or if you accidentally spill any liquid on it, immediately unplug the product from the electrical socket. Contact Brother customer service or your local Brother dealer.

---



(Models with the fax function only)

Use caution when installing or modifying telephone lines. Never touch telephone wires or terminals that are not insulated unless the telephone line has been unplugged from the wall socket.

Never install telephone wiring during a thunderstorm. Never install a telephone wall socket in a location that is wet or may become wet, for example, near a refrigerator or other appliance that produces condensation.



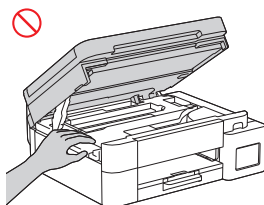
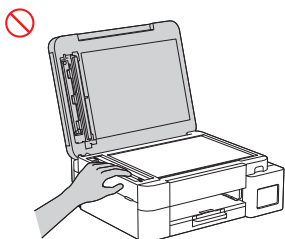
Power Cord Safety:

- (DCP-T830DW/DCP-T835DW/MFC-T930DW/MFC-T935DW) This product is equipped with an earthed plug. This plug will only fit into an earthed electrical socket. This is a safety feature. If you are unable to insert the plug into the socket, ask your electrician to replace your obsolete socket. DO NOT attempt to defeat the purpose of the earthed plug.
- DO NOT allow anything to rest on the power cord.
- DO NOT place this product where others might step on the cord.
- DO NOT place this product in a position where the cord is stretched or strained as it may become worn or frayed.
- DO NOT use the product or handle the cord if the cord has become worn or frayed. If unplugging your product, DO NOT touch the damaged/frayed part.
- DO NOT pull on the middle of the power cord; pulling on the middle may cause the cord to separate from the plug. Doing this might cause an electrical shock.
- DO NOT use any undesignated cables (or optional devices). Doing so may cause a fire or injuries. Installation must be performed correctly according to the *Quick Setup Guide*.
- Brother strongly recommends that you DO NOT use any type of extension cord.
- This product should be positioned so that nothing pinches or constricts the power cord.
- DO NOT use cables that do not meet the cable specifications described in the *Online User's Guide: Specifications*. Doing so may cause a fire or injuries.
- If the power cord is provided with this product, use ONLY the provided cord. Installation must be performed correctly as described in the *Quick Setup Guide*.

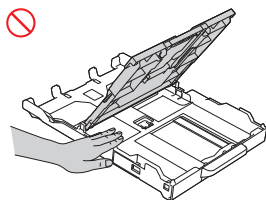
## CAUTION

Wait until pages have exited the product before picking them up. Failure to do this may cause injury to your fingers by trapping them inside the machine.

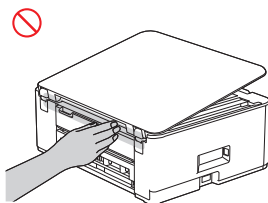
To prevent injuries, be careful not to put your fingers in the areas shown in the illustrations.



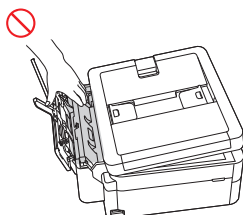
(DCP-T830DW/DCP-T835DW/  
MFC-T930DW/MFC-T935DW)



(DCP-T830DW/DCP-T835DW/  
MFC-T930DW/MFC-T935DW)



\* Example for DCP-T530DW

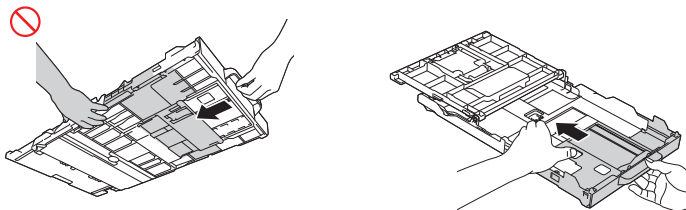


(DCP-T830DW/DCP-T835DW/  
MFC-T930DW/MFC-T935DW)



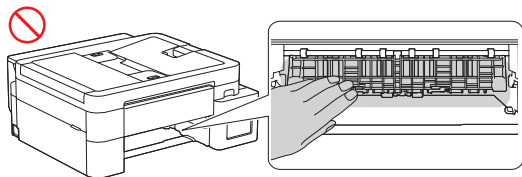
---

When changing the tray size from the Legal size to the original size, be careful not to trap your fingers in the gaps or slots in the bottom of the tray. It may cause injury to you.

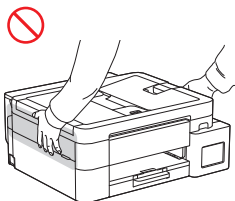


---

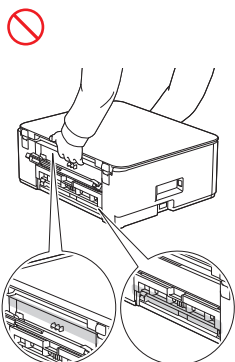
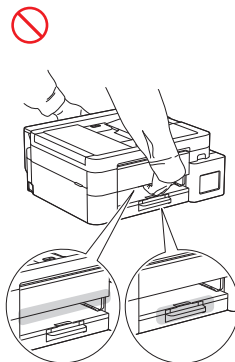
Do not put your fingers in the areas shown in the illustrations except when removing jammed paper or cleaning the machine. Be careful when doing so, to avoid injury.



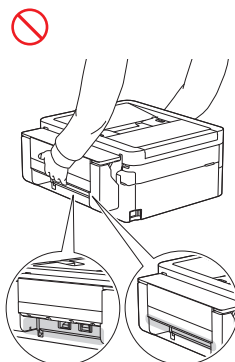
DO NOT carry the product by holding the areas shown in the illustrations. Doing this may cause the product to slip out of your hands and may result in injury.



(DCP-T830DW/DCP-T835DW/  
MFC-T930DW/MFC-T935DW)



(DCP-T230/DCP-T236/DCP-T430W/  
DCP-T435W/DCP-T436W/DCP-T530DW/  
DCP-T535DW/DCP-T536DW/  
DCP-T730DW/DCP-T735DW)

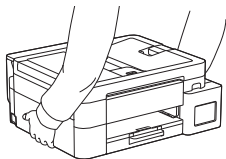


(DCP-T830DW/DCP-T835DW/  
MFC-T930DW/MFC-T935DW)

---

Only carry the machine by placing your hands under the entire machine.

Turn off the machine, unplug the power cord from the machine, and then hold the bottom of the machine, as illustrated.



Storage of Ink Bottles:

- Be careful not to get the ink in your eyes or mouth when refilling the ink tank.
- Keep the ink bottle out of the reach of children.
- DO NOT shake the ink bottle. The ink may leak out if the bottle is shaken.
- DO NOT store the ink bottle in a place subject to temperature changes.
- DO NOT expose the ink bottle to direct sunlight.
- DO NOT drop or damage the ink bottle.
- DO NOT swallow ink. If you swallow any ink, spit it out, rinse your mouth and consult your doctor immediately.
- Avoid tilting the ink bottle or storing it on its side; it may leak.
- If any ink remains in the ink bottle, fasten the cap tightly and store the ink bottle on a level surface in a cool, dark place.
- DO NOT let children or anyone else swallow the ink bottle cap or the ink tank cap.

---

If the ink contacts your skin or gets into your eyes or mouth, follow these steps immediately:

- If your skin comes into contact with the ink, wash your skin with water and soap immediately.
- If the ink gets into your eyes, rinse them with water, and consult your doctor immediately. If left untreated, it may cause redness or mild inflammation of the eyes.
- If the ink gets into your mouth or you swallow it, spit it out, rinse your mouth, and consult your doctor immediately. Failure to seek medical attention could lead to sickness.

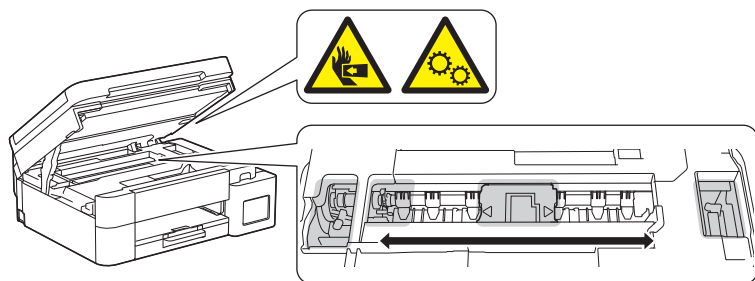
---

DO NOT run your hand over the edge of the paper. The thin and sharp edges of the paper may cause an injury.

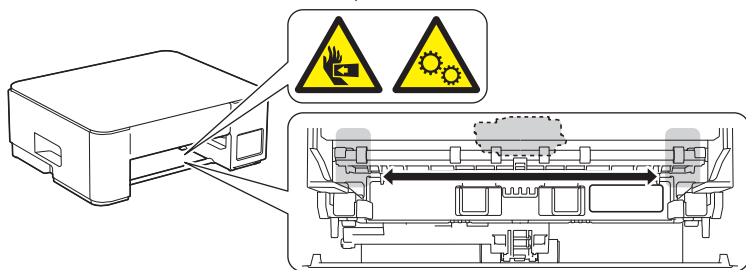
Moving parts are located in the grey shaded areas shown in the illustration. Keep your hands away from those areas when the parts are moving, or else injury may result.

DO NOT remove or damage the caution or warning label inside the product.

(DCP-T830DW/DCP-T835DW/MFC-T930DW/MFC-T935DW)



(DCP-T230/DCP-T236/DCP-T430W/DCP-T435W/DCP-T436W/DCP-T530DW/DCP-T535DW/  
DCP-T536DW/DCP-T730DW/DCP-T735DW)



## IMPORTANT

- A distinct change in the product's performance may indicate a need for service.
- DO NOT connect your product to an electrical socket controlled by wall switches or automatic timers, or to the same circuit as a large appliance or other equipment that requires a significant amount of electricity. It could disrupt the power supply. Disruption of the power supply may also delete information from the product's memory, and repeated cycling of the power supply can damage the product.
- DO NOT put any objects on top of the product. Doing so may cause the product to malfunction.
- If the product does not operate normally when the operating instructions are followed, adjust only those controls that are covered by the operating instructions. Incorrect adjustment of other controls may result in damage and will often require extensive work by a qualified technician to restore the product to normal operation.

- DO NOT put any foreign objects into the ink tank. Doing this may cause the product to malfunction.
- 

## Product Warranty & Liability

Nothing in this guide shall affect any existing product warranty or be construed as granting any additional product warranty. Failure to follow the safety instructions in this guide may invalidate your product's warranty.

### WARNING



Only use the power cord supplied with this product (if included in the box).

---

#### Disconnect machine



This product must be installed near an electrical socket that is easily accessible. In case of an emergency, you must unplug the power cord from the electrical socket to shut off the power completely.

---

## Declaration of Conformity (Europe Only)

---

We, Brother Industries, Ltd.

15-1, Naeshiro-cho, Mizuho-ku, Nagoya 467-8561 Japan

declare that this product is in conformity with the relevant EU harmonization legislation (Europe only) and UK legislation (Great Britain only).

The Declaration of Conformity (DoC) can be downloaded from our website. Visit [support.brother.com/manuals](http://support.brother.com/manuals).

## EU Declaration of Conformity for RE Directive 2014/53/EU (Europe Only) (Applicable to Models with Radio Interfaces)

---

We, Brother Industries, Ltd.

15-1, Naeshiro-cho, Mizuho-ku, Nagoya 467-8561 Japan

declare that these products are in conformity with the provisions of the RE Directive 2014/53/EU. A copy of the Declaration of Conformity can be downloaded by following the instructions in the Declaration of Conformity (Europe Only) section.

## Wireless LAN (Models with the Wireless LAN Function Only)

---

This Printer/Multifunction Printer supports Wireless LAN.

- Frequency band(s): 2400 MHz - 2483.5 MHz  
Maximum radio-frequency power transmitted in the frequency band(s): Less than 20 dBm (e.i.r.p.)
- Frequency band(s): 5150 MHz - 5350 MHz  
Maximum radio-frequency power transmitted in the frequency band(s): Less than 23 dBm (e.i.r.p.)  
For indoor use only (5.15 GHz - 5.35 GHz)
- Frequency band(s): 5470 MHz - 5725 MHz  
Maximum radio-frequency power transmitted in the frequency band(s): Less than 23 dBm (e.i.r.p.)

## LAN Connection (Models with the Wired LAN Function Only)

---

### CAUTION

DO NOT connect this product to a LAN connection that is subject to overvoltages.

## Recycling Information in Accordance with the WEEE and Battery Directives

---



Product Mark



Battery Mark

### Europe Only

The product/battery is marked with one of the above recycling symbols. It indicates that at the end of the life of the product/battery, you should dispose of it separately at an appropriate collection point and not place it in the normal domestic waste stream.

# Trademarks

Wi-Fi® and Wi-Fi Direct® are registered trademarks of Wi-Fi Alliance®.

Mac is a trademark of Apple Inc., registered in the U.S. and other countries.

QR Code is a registered trademark of DENSO WAVE INCORPORATED in Japan and in other countries.

Each company whose software title is mentioned in this manual has a Software Licence Agreement specific to its proprietary programs.

**Any trade names and product names of companies appearing on Brother products, related documents and any other materials are all trademarks or registered trademarks of those respective companies.**

## Brother Customer Service

### Customer Service

---

Visit [global.brother/en/gateway](http://global.brother/en/gateway) for contact information for your local Brother office.

### Service Centre Locations

---

For service centres in your country, contact your local Brother office. Address and telephone contact information for local offices can be found at [global.brother/en/gateway](http://global.brother/en/gateway) by selecting your region and country.

## Unlawful Use of Copying or Scanning Equipment (Products with the scanning function only)

It is an offence to make reproductions of certain items or documents with the intent to commit fraud. The following is a non-exhaustive list of documents which it may be unlawful to produce copies of. We suggest you check with your legal adviser and/or the relevant legal authorities if in doubt about a particular item or document:

- Currency
- Bonds or other certificates of indebtedness
- Certificates of deposit
- Armed forces service or draft papers
- Passports
- Postage stamps (cancelled or uncanceled)
- Immigration papers
- Welfare documents
- Cheques or drafts drawn by governmental agencies

- Identifying badges or insignias

In addition, driving licences and/or Certificates of Title to motor vehicles may not be copied or scanned under certain national laws.

Copyrighted works cannot be copied or scanned lawfully, subject to the “fair dealing” exception relating to sections of a copyrighted work. Multiple copies would indicate improper use. Works of art should be considered the equivalent of copyrighted works.

## Information for compliance with Commission Regulation (EU)2023/826 (Europe only)

To download the information for compliance with Commission Regulation, visit the Brother support website at [support.brother.com/g/d/a4m9/](http://support.brother.com/g/d/a4m9/).

Models	Power Consumption Networked Standby <sup>1</sup>
DCP-T230/DCP-T236	Approx. 0.6 W
DCP-T430W/DCP-T435W/DCP-T436W/ DCP-T530DW/DCP-T535DW/DCP-T536DW/ DCP-T730DW/DCP-T735DW	Approx. 0.7 W
DCP-T830DW/DCP-T835DW	Approx. 1.6 W
MFC-T930DW/MFC-T935DW	Approx. 2.0 W

<sup>1</sup> All network ports activated and connected

### How to enable/disable wireless LAN

- **DCP-T430W/DCP-T435W/DCP-T436W**

Press **Wi-Fi** and **Stop** simultaneously, and then press **Mono Copy**.

- **DCP-T530DW/DCP-T535DW/DCP-T536DW/DCP-T730DW/DCP-T735DW/DCP-T830DW/DCP-T835DW**

Press **Wi-Fi**, and then press **▲** or **▼** to select the following:

1. Select [WLAN Enable]. Press **OK**.
2. Select [On] or [Off]. Press **OK**.

- **MFC-T930DW/MFC-T935DW**

Press **Settings**, and then press **▲** or **▼** to select the following:

1. Select [Network]. Press **OK**.
2. Select [WLAN (Wi-Fi)]. Press **OK**.
3. Select [WLAN Enable]. Press **OK**.
4. Select [On] or [Off]. Press **OK**.

### How to enable/disable Wi-Fi Direct



- **DCP-T530DW/DCP-T535DW/DCP-T536DW/DCP-T730DW/DCP-T735DW/DCP-T830DW/DCP-T835DW**

Press **Menu**, and then press ▲ or ▼ to select the following:

1. Select [Network]. Press **OK**.
2. Select [Wi-Fi Direct]. Press **OK**.
3. Select [I/F Enable]. Press **OK**.
4. Select [On] or [Off]. Press **OK**.

- **MFC-T930DW/MFC-T935DW**

Press **Settings**, and then press ▲ or ▼ to select the following:

1. Select [Network]. Press **OK**.
2. Select [Wi-Fi Direct]. Press **OK**.
3. Select [I/F Enable]. Press **OK**.
4. Select [On] or [Off]. Press **OK**.

#### **How to enable/disable Wireless Direct**

- **DCP-T430W/DCP-T435W/DCP-T436W**

Press **Wi-Fi** and **Stop** simultaneously, and then press **Copy Shortcut**.

#### **Power consumption**

Your machine has a power-saving function. If you deactivate this function or choose to delay its activation, power consumption will increase.

## **Disclaimer**

Brother disclaims any warranties with respect to avoidance, mitigation or non-occurrence of any breakdowns, malfunctions, system crashes, virus infections, damage and disappearances of data, and any other kind of errors by using this product. AS LONG AS PERMITTED BY APPLICABLE LAWS, BROTHER WILL NOT BE LIABLE FOR ANY LOST REVENUES OR INDIRECT, SPECIAL, INCIDENTAL, CONSEQUENTIAL, EXEMPLARY, OR PUNITIVE DAMAGES OF THE CUSTOMERS OR ANY OTHER THIRD PARTY.

brother

Month of publication: 11/2024



D030B7001-00  
CEE-ENG  
Version 0