

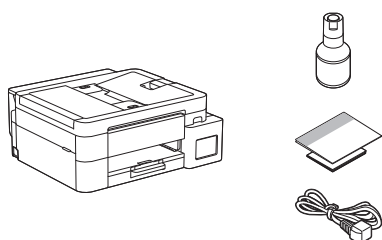


The latest manuals are available at the Brother support website: support.brother.com/manuals

Read the *Product Safety Guide* first, then read this *Quick Setup Guide* for the correct installation procedure.

i If you selected **[[5-B] Set up from the control panel on the machine]** in the printed *Quick Setup Guide* included with the machine, go to **[5-B]**.

1 Unpack the machine and check the components



Remove the protective tape and the film covering the machine.

NOTE

- The illustrations in this guide may not match your model exactly, but the steps are the same for each model. The above illustration is MFC-T930DW.
- The components may differ depending on your country.
- Save all packing materials and the box in case you need to ship your machine.
- We recommend using a USB 2.0 cable (Type A/B) that is no more than 2 metres long (included in some countries).
- Use a straight-through Category 5 (or greater) twisted-pair cable for 10BASE-T or 100BASE-TX Fast Ethernet Network (not included). (DCP-T830DW / DCP-T835DW / MFC-T930DW / MFC-T935DW)
- Brother aims to reduce waste and save both raw materials and the energy required to produce them. Read more about our environmental work at www.brotherearth.com.

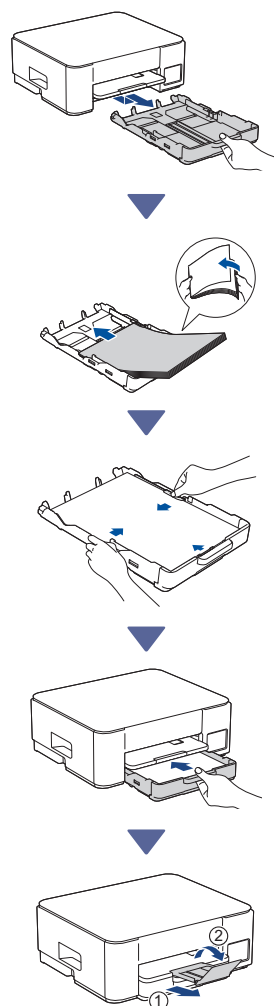
2 Load plain A4 paper in the paper tray

Proceed to the next step according to your model. The model name can be found on the front of the machine.

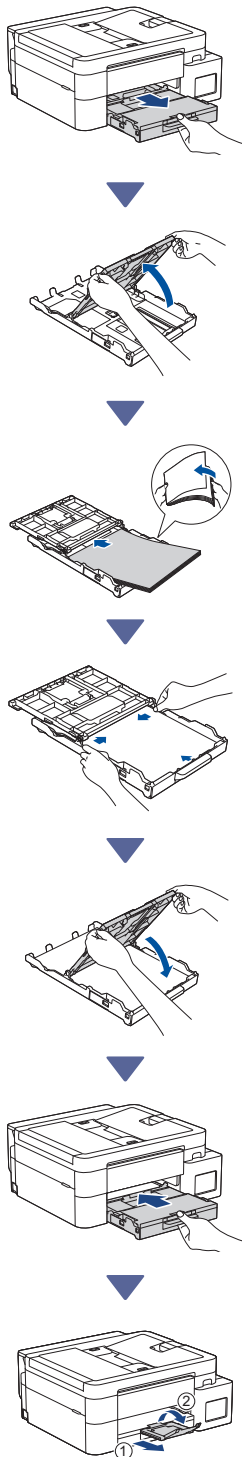
DCP-T530DW / DCP-T535DW / DCP-T536DW → **2-A**
DCP-T730DW / DCP-T735DW

DCP-T830DW / DCP-T835DW → **2-B**
MFC-T930DW / MFC-T935DW

2-A



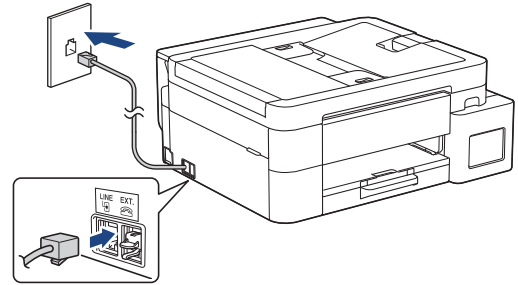
Continue to the next column



3 Connect the telephone line cord (MFC-T930DW / MFC-T935DW)



Follow this step only for models MFC-T930DW / MFC-T935DW and if you are using this machine as a fax machine.

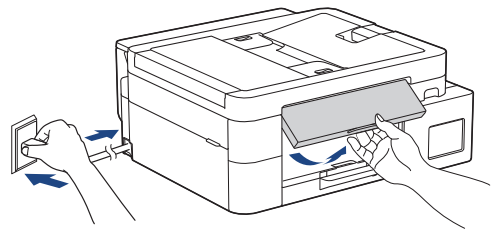


Insert the telephone line cord into the socket marked **LINE**.

For more information on using the fax feature, see the *Online User's Guide*.

(For Europe) We can send you a genuine Brother cord free of charge if you need one. To contact us, visit www.brother.eu.

4 Connect the power cord



The machine powers on automatically.

(For certain models only) If you are prompted to select your country or language, follow the LCD instructions.

5 Choose your setup method

Choose your setup method below.

- To complete both the setup and the connection settings with your device at the same time, follow the instructions in [5-A].
- To set up your machine using a Mac, follow the instructions in section [5-B].



Set up using mobile app or computer software (recommended) → **5-A**

Set up from the control panel on the machine → **5-B**

Recommended

5-A Set up using mobile app or computer software

(To set up your machine using a Mac, follow the instructions in section [5-B].)

Go to the website applicable to your setup method:

Set up with your mobile device

* The mobile device must be connected to Wi-Fi®.



setup.brother.com

Set up with your computer



 setup.brother.com

NOTE

Even after the setup is complete, you can also use your machine on another device by installing the software on that device.

5-B Set up from the control panel on the machine


Follow the steps below according to your model.

➤ DCP-T530DW / DCP-T535DW / DCP-T536DW
DCP-T730DW / DCP-T735DW / DCP-T830DW
DCP-T835DW

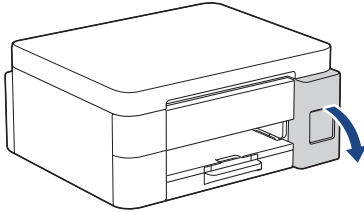
1. When [Set up?] is displayed, press ▼.
2. Press ▲ or ▼ to select [Set up using LCD], and then press **OK**.
3. When the message appears on the LCD, press ▲.

➤ MFC-T930DW / MFC-T935DW

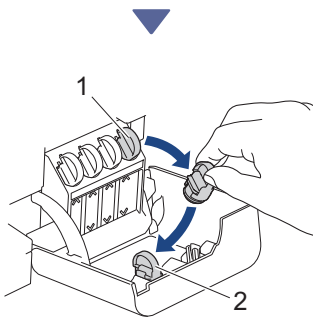
1. Press ◀ when the QR Code screen appears.
2. Press ▶ when the [Set up from machine] screen appears to confirm the change of mode.

Continue to the next column 

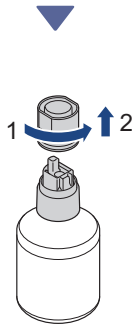
6 Fill the ink tanks with inbox ink



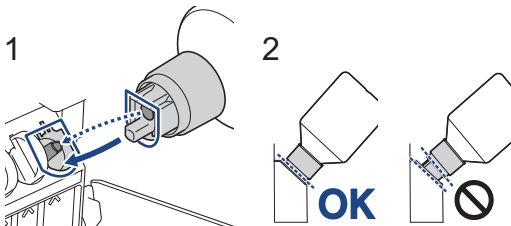
Open the ink tank cover.
(The illustrations in this guide may not match your model exactly, but the steps are the same for each model.)



Remove the cap (1) and place it inside the back of the cover (2).



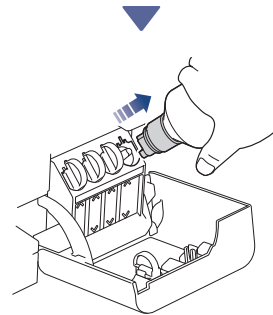
Remove the ink bottle cap.



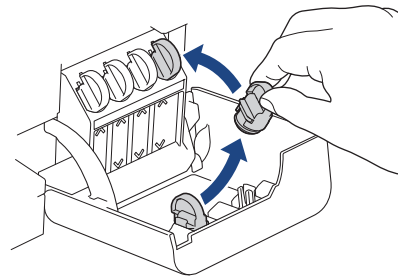
Align the bottle so that the pin on the ink tank can be inserted into the hole in the bottle, as shown in (1).

Slide the bottle onto the pin at the angle shown in (2) until the cap is flush with the ink tank surface. (You will hear a click when you insert it for the first time.)

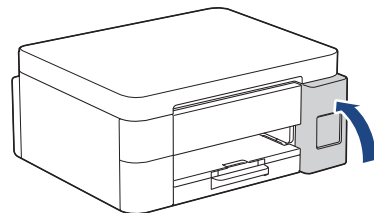
The bottle will support itself when in the correct position and the ink will fill the tank automatically. If ink flow does not start automatically or if it fills very slowly, carefully remove and reinsert the bottle.




When finished, remove the bottle, pulling the nozzle slowly so the ink does not spill.

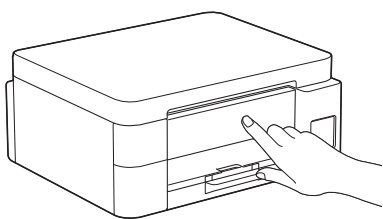


Remove the cap from inside the ink tank cover and seal the ink tank.



After filling all of the ink tanks, close the ink tank cover.

Continue to the next column 



Check the LCD messages to continue setup. When the message preparing ink appears, follow the LCD instructions to perform initial ink system cleaning. Cleaning can take a few minutes, and you can perform the next step during this time.

7 Set the date and time

Follow the steps on the LCD to set the date and time.

➤ DCP-T530DW / DCP-T535DW / DCP-T536DW
DCP-T730DW / DCP-T735DW / DCP-T830DW
DCP-T835DW

1. Press **OK** to set the date and time.
2. Press **▲** or **▼** to select the number, and then press **OK** to set the date and time.

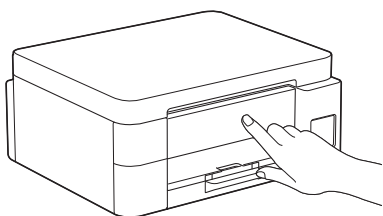
➤ MFC-T930DW / MFC-T935DW

Follow the LCD instructions to set the date and time.

8 Set firmware update notifications

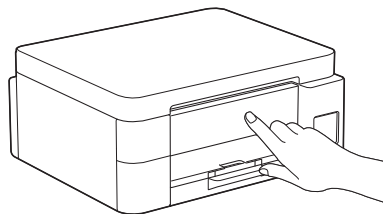


Follow this step for models MFC-T930DW / MFC-T935DW only.



When the firmware update information screen appears, configure your firmware settings.

9 Check the print quality



When the initial ink system cleaning has finished, print the Print Quality Check Sheet:

➤ DCP-T530DW / DCP-T535DW / DCP-T536DW
DCP-T730DW / DCP-T735DW / DCP-T830DW
DCP-T835DW

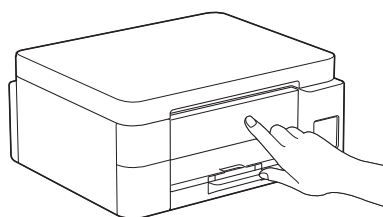
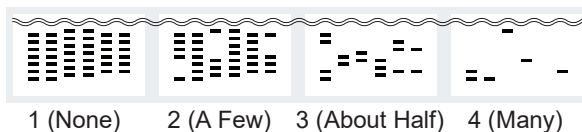
Press **Start**.

➤ MFC-T930DW / MFC-T935DW

Press **▶**.

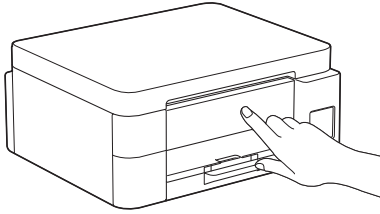


The machine prints the Print Quality Check Sheet.



On the machine's LCD, select the images that closely match the image for each colour on the Print Quality Check Sheet, and then restart the cleaning procedure, if required.

10 Adjust the print alignment (recommended)



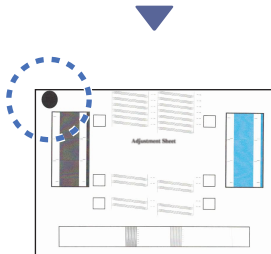
To adjust the print alignment before using your machine, print the Adjustment Sheet:

➤ DCP-T530DW / DCP-T535DW / DCP-T536DW
DCP-T730DW / DCP-T735DW / DCP-T830DW
DCP-T835DW

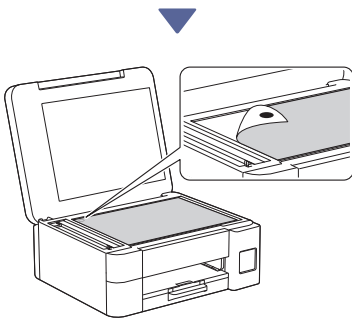
When the alignment check message appears, press ▲ and follow the LCD instructions.

➤ MFC-T930DW / MFC-T935DW

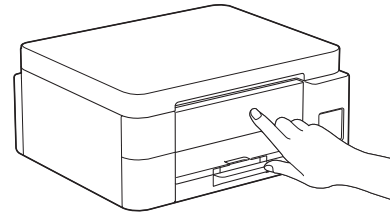
When the paper adjustment message appears, press ► and follow the LCD instructions.



There is a black circle located in the upper left corner of the sheet.



Place the Adjustment Sheet face down on the scanner glass, making sure the black circle is in the upper left corner of the scanner glass, as shown.



Follow the LCD instructions to adjust the alignment.

When finished, remove the Adjustment Sheet from the scanner glass.

11 Connect your computer or mobile device to your machine (if needed)

Visit the following website from your computer or mobile device or scan the code below to install the software.

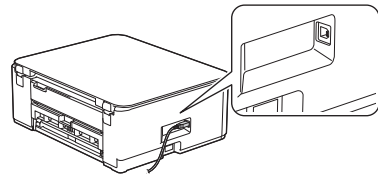
 setup.brother.com




Make sure your machine and mobile device are connected to the same network.

NOTE

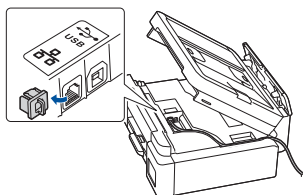
➤ DCP-T530DW / DCP-T535DW / DCP-T536DW
DCP-T730DW / DCP-T735DW



For USB connection, locate the correct port on the side of the machine, as shown.

Continue to the next column 

➤ DCP-T830DW / DCP-T835DW / MFC-T930DW
MFC-T935DW



For wired network connection and USB connection, locate the correct port (based on the cable you are using) inside the machine, as shown.

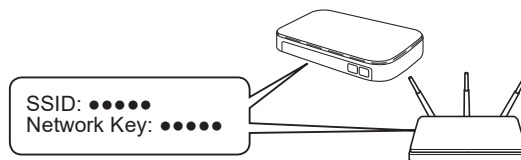
Setup Finished

Now you are ready to print or scan from this machine. Perform the following steps as necessary.

Important Notice for Network Security:

The default password to manage this machine's settings is located on the back of the machine and marked "Pwd". We recommend immediately changing the default password to protect your machine from unauthorized access.

Manual wireless setup



Find the SSID (Network Name) and Network Key (Password) on your wireless access point/router.



➤ DCP-T530DW / DCP-T535DW / DCP-T536DW
DCP-T730DW / DCP-T735DW / DCP-T830DW
DCP-T835DW


1. Go to your machine and press **Wi-Fi**.
2. Press **OK** to select [Find Network].
The [WLAN Enable?] message appears on the LCD.
3. Press **▲** to select [On].
4. Select the SSID (Network Name) for your access point/router and enter the Network Key (Password).


If you cannot find this information, ask your network administrator or wireless access point/router manufacturer.

To enter the Network Key (Password), hold down or repeatedly press **▲** or **▼** to select a character from the list below:

aAbBcCdDeEfFgGhHijJkKlLmMnNoOpPqQrRsStT
uUvVwWxXyYzZ!@&%#^{}[] ();,~<>=+~*/
_1234567890

➤ MFC-T930DW / MFC-T935DW

1. Go to your machine, and press **▼**  on the panel.
2. Press **OK** to select [Find Wi-Fi Network].
The [Enable WLAN?] message appears on the LCD.
3. Press **▶** to select Yes.
4. Select the SSID (Network Name) for your access point/router and enter the Network Key (Password).

Continue to the next column 

If you cannot find this information, ask your network administrator or wireless access point/router manufacturer.

For more information, see *Enter Text on Your Brother Machine* in the *Online User's Guide*.

When the wireless setup is successful, the LCD displays [Connected].

For detailed machine information and product specifications, see the *Online User's Guide* at support.brother.com/manuals.