



The latest manuals are available at the Brother support website: support.brother.com/manuals

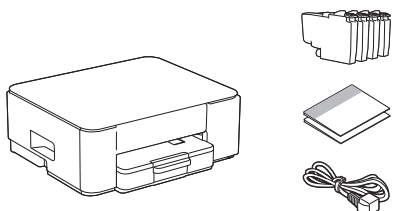


Read the *Product Safety Guide* first, then read this *Quick Setup Guide* for the correct installation procedure.



If you have followed the instructions in the printed *Quick Setup Guide* included with your machine and selected step 4-B "Set up from the machine's control panel", go directly to step 4-B in this guide.

1 Unpack the machine and check the components

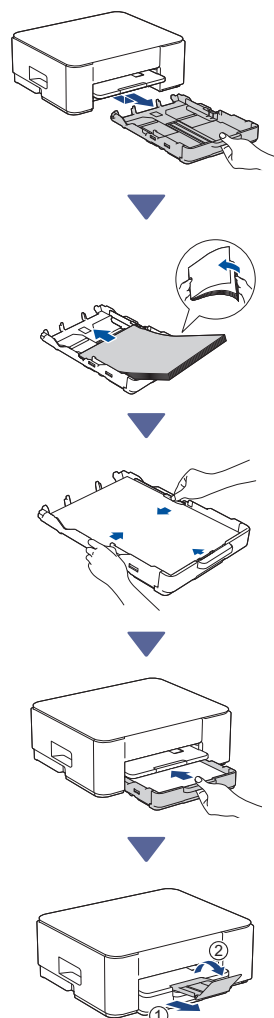


Remove the protective tape or film covering the machine and the supplies.

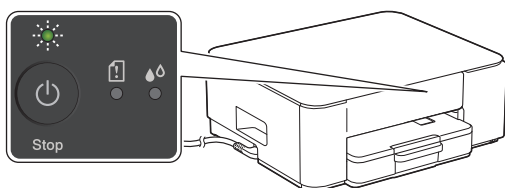
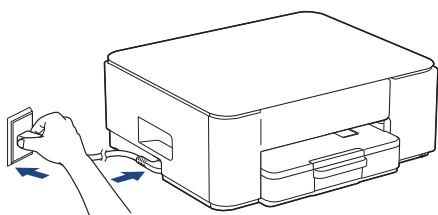
NOTE

- The components may differ depending on your country.
- Save all packing materials and the box in case you need to ship your machine.
- If you use a wired connection, you must purchase the correct interface cable for the interface you want to use.
USB cable: Use a USB 2.0 cable (Type A/B) that is no more than 2 metres long (included in some countries).
- Brother aims to reduce waste and save both raw materials and the energy required to produce them. Read more about our environmental work at www.brotherearth.com.

2 Load plain A4 paper in the paper tray



3 Connect the power cord



The machine powers on automatically and the Power LED starts flashing.

4 Choose your setup method



Choose the setup method according to your environment.

Set up using mobile app or computer software (Recommended) → **4-A**

Set up from the machine's control panel (Mac users who cannot use a mobile device for setup should select this method.) → **4-B**

Recommended

4-A Set up using mobile app or computer software

Go to the website applicable to your setup method:

Set up with your mobile device

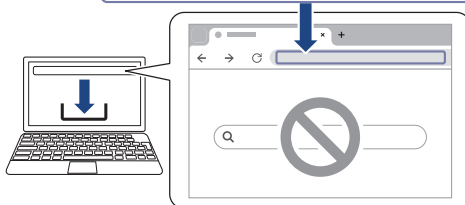
* The mobile device must be connected to Wi-Fi®.



setup.brother.com

Set up with your computer (Windows only)

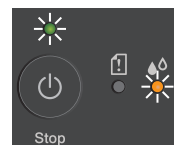
<https://setup.brother.com>



NOTE

You can use your machine with multiple devices. Use one of the setup methods in this step to download the machine's software onto other devices that you want to use.

4-B Set up from the machine's control panel

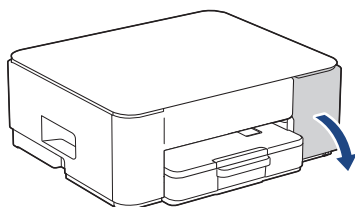


When the Power LED starts flashing slowly, press and hold the **Mono Copy** button for three seconds.

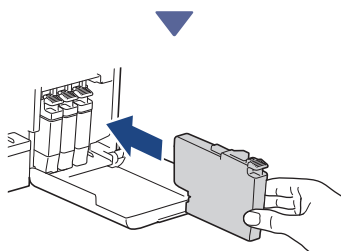
Confirm that both the Power LED and the Ink LED are lit, and then proceed to the next step.

Continue to the next column →

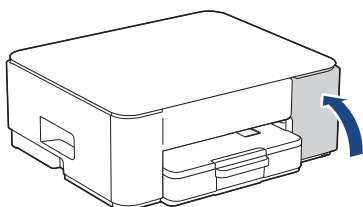
5 Install the inbox ink cartridges



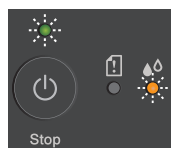
Open the ink cartridge cover.
(The illustrations in this guide may not match your model exactly, but the steps are the same for each model.)



Install the inbox ink cartridges.



After installing all of the four ink cartridges, close the ink cartridge cover. The machine will start the initial ink system cleaning.



During the initial cleaning, both the Power and Ink LEDs will flash.
Cleaning can take a few minutes. The machine may be silent for the first two minutes while it fills ink into the tank.

IMPORTANT

DO NOT power off the machine. Allow the setup to continue until the Print Quality Check Sheet is printed.

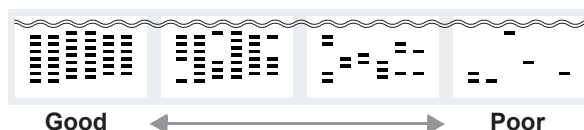


When the initial ink system cleaning has finished, the machine prints the Print Quality Check Sheet.

NOTE

The first time you install the ink cartridges, the machine will use extra ink to fill the ink delivery tubes. This is a one-time process that enables high-quality printing.

6 Check the print quality



Check the Print Quality Check Sheet.

If the quality of any of the four colour blocks is **Poor**, we strongly recommend cleaning the print head to improve the print quality. See the *Reference Guide* included with the machine.

7 Connect your computer or mobile device to your machine (if needed)

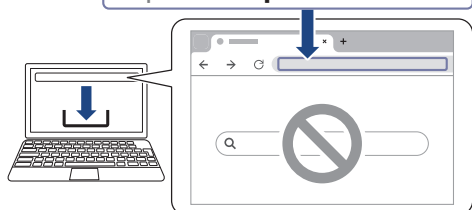
Visit the following website from your computer or mobile device or scan the code below to install the software:



setup.brother.com

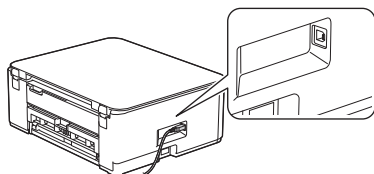


<https://setup.brother.com>



Make sure your machine and mobile device are connected to the same network.

NOTE



For USB connection, locate the correct port on the side of the machine, as shown.

Setup Finished

Now you are ready to print or scan from this machine.

Important Notice for Network Security:

The default password to manage this machine's settings is located on the back of the machine and marked "Pwd". We recommend immediately changing the default password to protect your machine from unauthorised access.

For detailed machine information and product specifications, see the *Online User's Guide* at support.brother.com/manuals.