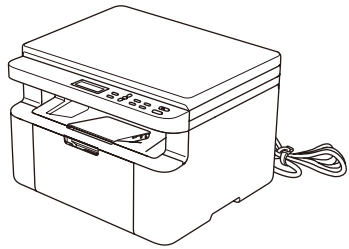


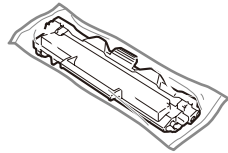


## Unpack the machine and check the components

Remove the protective tape or film covering the machine and the supplies.



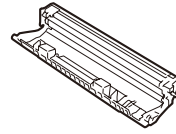
USB Interface Cable



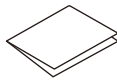
Toner Cartridge



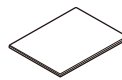
A5 Paper Long Edge Support



Drum Unit  
(Installed in the machine)



Quick Setup Guide



Product Safety Guide

### NOTE:

- The available connection interfaces vary depending on the model.  
If you use a wired connection, you must purchase the correct cable for the interface you want to use.

#### • USB cable

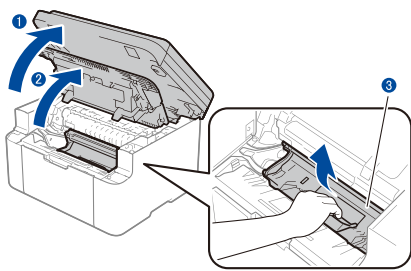
We recommend using a USB 2.0 cable (Type A/B) that is no more than 2 metres long.

#### • Network cable

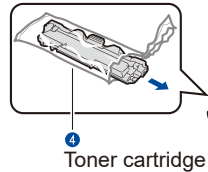
Use a straight-through Category 5 (or greater) twisted-pair cable.

- Save all packing materials and the box in case you need to ship your machine.

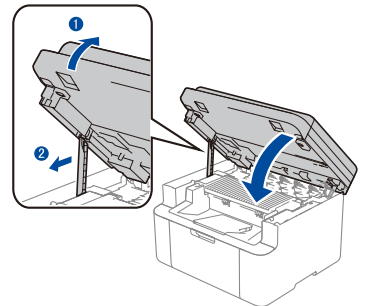
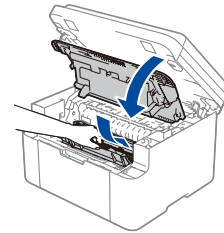
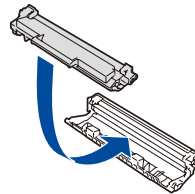
## 1 Remove the packing materials and install the toner cartridge



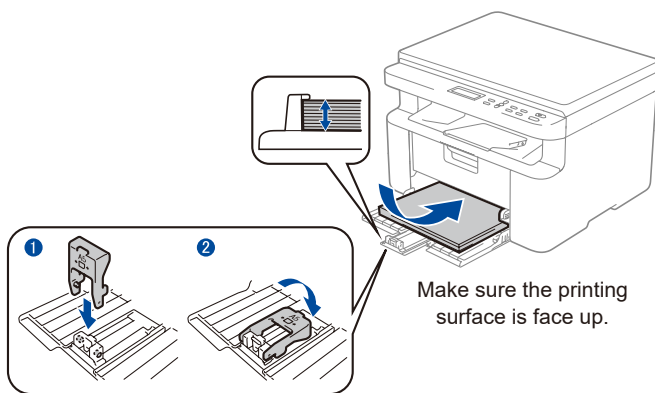
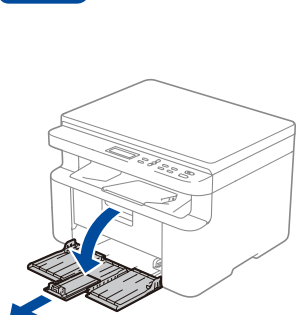
Take out ③ drum unit



Toner cartridge

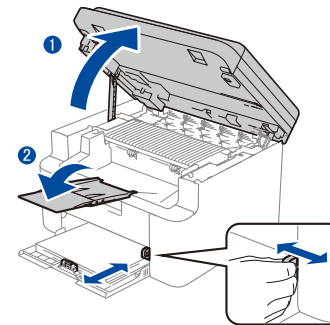


## 2 Load paper in the paper tray

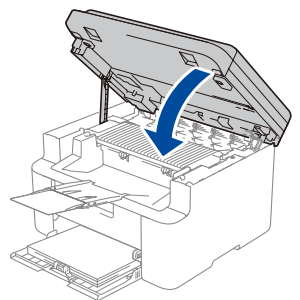


For the long edge of A5 paper

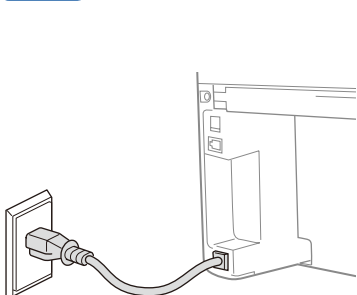
Make sure the printing surface is face up.



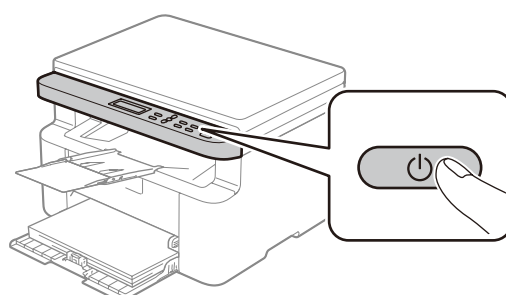
Adjust the paper guides to fit the paper being used.



## 3 Connect the power cord and turn the machine on



Back



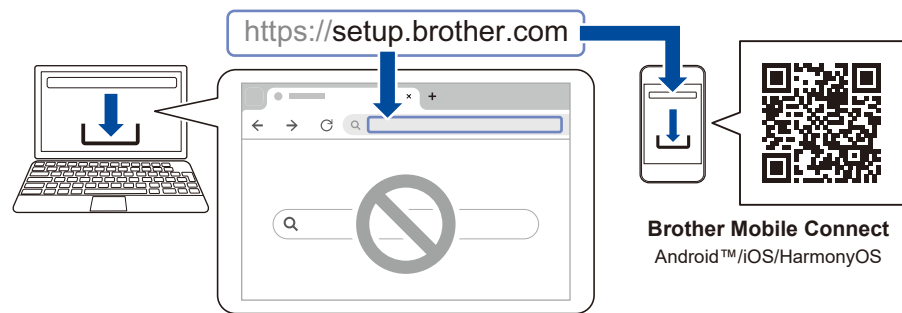
Front

## 4 Connect your computer or mobile device to your machine

Follow these steps to complete the setup using one of the connection types available on your machine.

You can also print directly from your mobile devices using AirPrint or Mopria™ Print Service. For more information, see the *Online User's Guide*.

Visit [setup.brother.com](https://setup.brother.com) to download and install Brother software.



Follow the on-screen instructions and prompts.

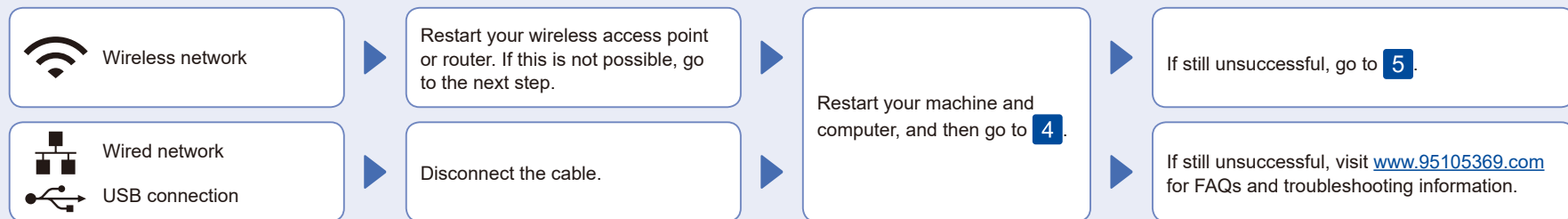
Setup Finished

You can now print and scan using your machine.

### Important Notice for Network Security:

The default password to manage this machine's settings is located on the back of the machine and marked "Pwd". We recommend immediately changing the default password to protect your machine from unauthorised access.

### Can't Connect? Check the following:

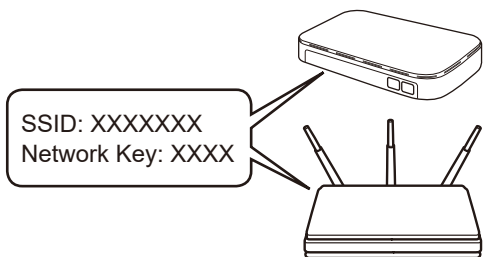


## 5 Manual wireless setup

If the wireless setup is unsuccessful, set up the connection manually.

Find your SSID (Network Name) and Network Key (Password) on your wireless access point or router and write them in the table provided below.

|                        |  |
|------------------------|--|
| SSID (Network Name)    |  |
| Network Key (Password) |  |



Press **设置**, and then select [Network] > [WLAN (Wi-Fi)] > [Find Network]. Follow the LCD instructions.

If you cannot find this information, ask your network administrator or wireless access point or router manufacturer.

Select the SSID (Network Name) for your access point or router and enter the Network Key (Password).

Press and hold (or press repeatedly) ▲ or ▼ to select one of the following characters:  
0123456789abcdefghijklmnopqrstuvwxyz  
ABCDEFGHIJKLMNOPQRSTUVWXYZ  
(space)!"#%&'()\*+,-./:;<=>?@[\\]^\_`{|}~

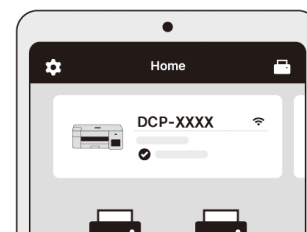
When the wireless setup is successful, the LCD displays [Connected].

Go to **4** to install software.

If the setup is unsuccessful, restart your Brother machine and your wireless access point or router, and repeat **5**. If still unsuccessful, visit [www.95105369.com](http://www.95105369.com).

## 6 Charge printable pages

- When the connection is complete, the home screen of Brother Mobile Connect, as shown on the right, will display your device name.
- Click **云充功能设置** on the home page.
- Follow the screen to activate, and add the administrator account. Click the **Start wechat mini program** button or scan the QR code to start the **Brother Cloud Charge** wechat mini program.
- Use the **Brother Cloud Charge** wechat mini program to charge printable pages.



## Setup Complete

### Scan the QR code to query the product usage guide

Contains installation instructions videos such as unpacking, network connection, activation, and frequently asked questions.

