



The latest manuals are available at the Brother support website: support.brother.com/manuals

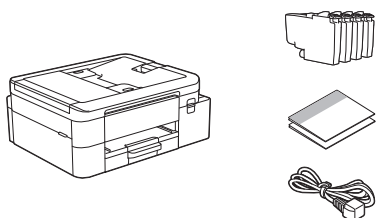


Read the *Product Safety Guide* first, then read this *Quick Setup Guide* for the correct installation procedure.

Manuals in Spanish for this model are available at support.brother.com/manuals.
Manuales en Español para este modelo están disponibles en support.brother.com/manuals.

i If you have followed the instructions in the printed *Quick Setup Guide* included with your machine and selected “Manual Setup”, go directly to step 6 in this guide.

1 Unpack the machine and check the components



Remove the protective tape or film covering the machine and the supplies.

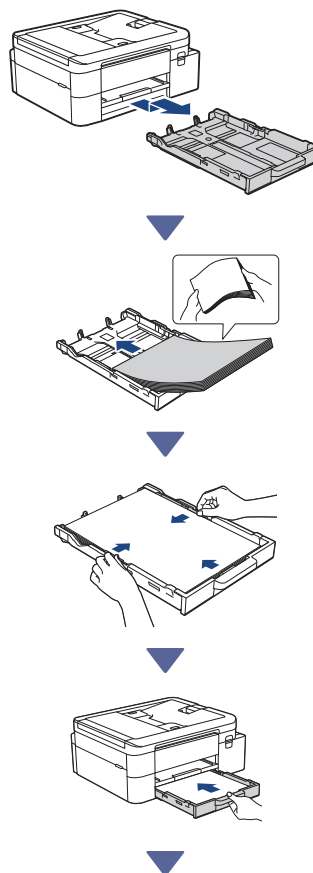
NOTE

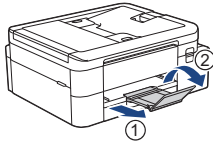
- The illustrations in this guide may not match your model exactly, but the steps are the same for each model.
- The components may differ depending on your country.
- Save all packing materials and the box in case you need to ship your machine.
- A telephone line cord is not included. If you use this machine for faxing, you must purchase a cord separately.
- If you use a wired connection, you must purchase the correct interface cable for the interface you want to use. (Supported models only)

USB cable: Use a USB 2.0 cable (Type A/B) that is no more than 6 feet (2 meters) long (included in some countries).

Ethernet (Network) cable: Use a straight-through Category 5 (or greater) twisted-pair cable for 10BASE-T or 100BASE-TX Fast Ethernet Network (not included).

2 Load plain Letter paper in the paper tray

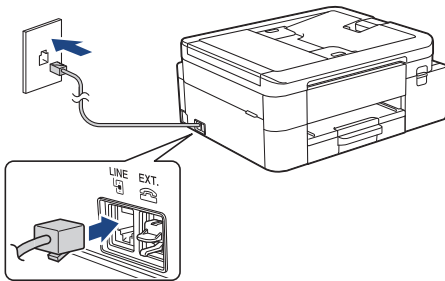




3 Connect the telephone line cord (models with the fax function only)



Follow this step only if you are using this machine as a fax machine.

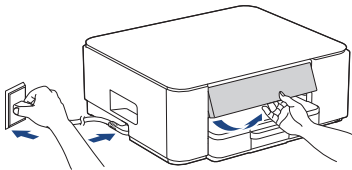


Insert the telephone line cord into the socket marked **LINE**.

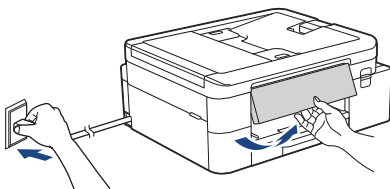
For more information on using the fax feature, see the *Online User's Guide*.


4 Connect the power cord

➤ MFC-J1355DW / MFC-J1360DW / MFC-J1365DW
MFC-J1367DW / MFC-J1410DW



➤ MFC-J4355DW / MFC-J4555DW



Continue to the next column 

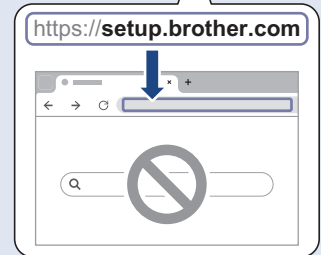
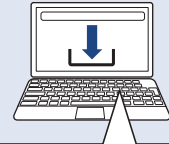
The machine powers on automatically.

(For certain models only) If you are prompted to select your country or language, follow the LCD instructions.

5 Choose your setup method

Easy Setup

Go to setup.brother.com and download the app or software that helps you to easily complete your setup and connection.



Not available for macOS

Manual Setup

Go to step 6.

NOTE

You can use your machine with multiple devices. Use one of the setup methods in this step to download the machine's software onto other devices that you want to use.

6 Set up from the machine's control panel

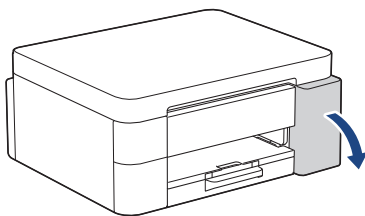
➤ MFC-J1355DW / MFC-J1360DW / MFC-J1365DW
MFC-J1367DW / MFC-J4355DW

1. Press ◀ when the QR Code screen appears.
2. Press ▶ when the [Set up from machine] screen appears.

➤ MFC-J1410DW / MFC-J4555DW

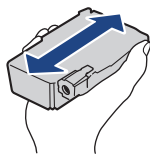
1. Press [Setup without app/software] when the QR Code screen appears.
2. Press [Yes] when the [Setup without app/software] screen appears.

7 Install the starter ink cartridges

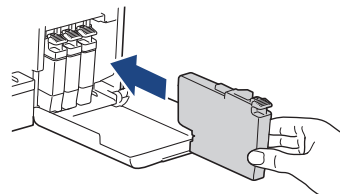


Open the ink cartridge cover.
(The illustrations in this guide may not match your model exactly, but the steps are the same for each model.)

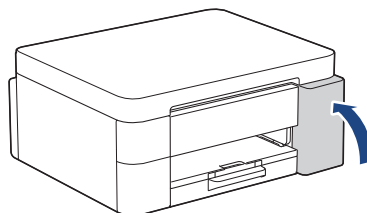
➤ MFC-J4355DW / MFC-J4555DW



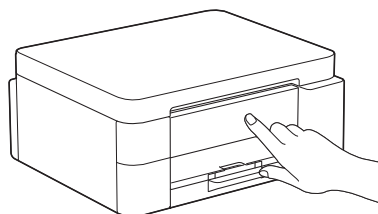
Quickly shake just the **black** ink cartridge horizontally 15 times as shown, before inserting it into the machine.



Follow the LCD instructions to install the ink cartridges.



After installing all of the four ink cartridges, close the ink cartridge cover.



Check the LCD messages to continue the setup. When the ink preparation message appears, follow the LCD instructions to perform the initial ink system cleaning. Cleaning can take a few minutes, and you can perform the next step during this time.

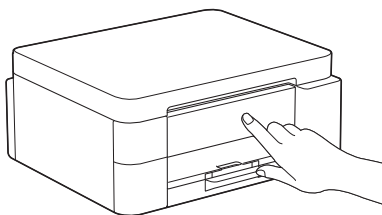
NOTE

The first time you install the ink cartridges, the machine will use extra ink to fill the ink delivery tubes. This is a one-time process that enables high-quality printing.

8 Set the date and time

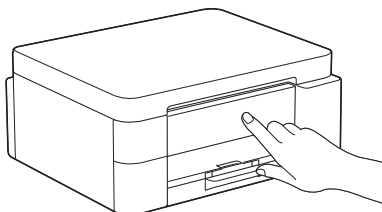
Follow the LCD instructions to set the date and time.

9 Set firmware update notifications



When the firmware update information screen appears, configure your firmware settings.

10 Check the print quality



When the initial ink system cleaning has finished, print the Print Quality Check Sheet:

- MFC-J1355DW / MFC-J1360DW / MFC-J1365DW
MFC-J1367DW / MFC-J4355DW

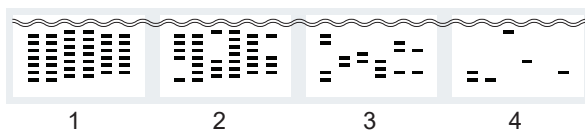
Press ▶.

- MFC-J1410DW / MFC-J4555DW

Press [OK].

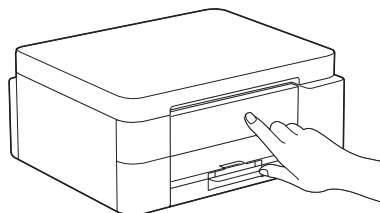


The machine prints the Print Quality Check Sheet.



On the machine's LCD, select the images that closely match the image for each color on the Print Quality Check Sheet, and then restart the cleaning procedure, if required.

11 Adjust the print alignment (recommended)



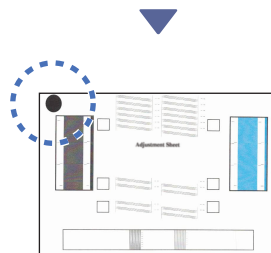
To adjust the print alignment before using your machine, print the Adjustment Sheet:

- MFC-J1355DW / MFC-J1360DW / MFC-J1365DW
MFC-J1367DW / MFC-J4355DW

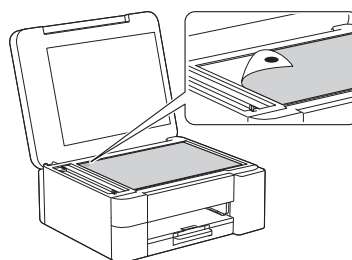
When the paper adjustment message appears, press ▶ and follow the LCD instructions.

- MFC-J1410DW / MFC-J4555DW

When the paper adjustment message appears, press [Start] and follow the LCD instructions.

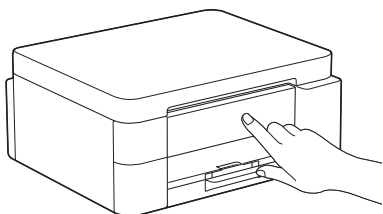


There is a black circle located in the top left corner of the sheet.



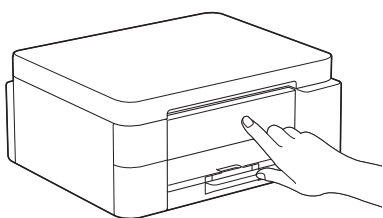
Place the Adjustment Sheet face down on the scanner glass, making sure the black circle is in the top left corner of the scanner glass, as shown.

Continue to the next column ↗



Follow the LCD instructions to adjust the alignment.
When finished, remove the Adjustment Sheet from the scanner glass.

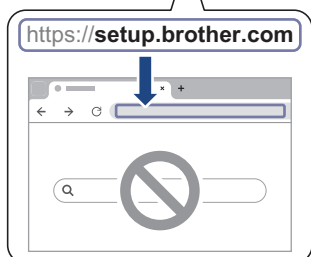
12 Confirm the machine setup completion



Follow the LCD instructions if displayed, and then confirm the machine setup completion.

13 Connect your computer or mobile device to your machine (if needed)

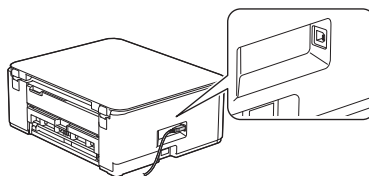
Go to setup.brother.com and download the app or software.



NOTE

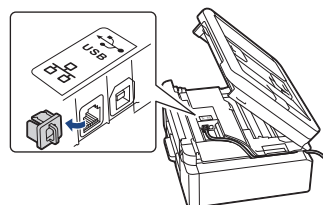
➤ MFC-J1355DW / MFC-J1360DW / MFC-J1365DW
MFC-J1367DW / MFC-J1410DW

For USB connection, locate the correct port on the side of the machine, as shown.



➤ MFC-J4355DW / MFC-J4555DW

For USB connection or wired network connection (certain models only), locate the correct port (based on the cable you are using) inside the machine, as shown.



Setup Finished

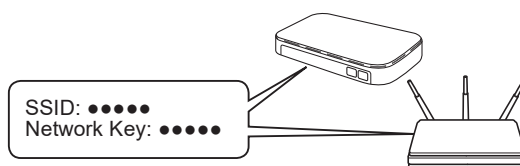
Now you are ready to print or scan from this machine.

Important Notice for Network Security:

The default password to manage this machine's settings is located on the back of the machine and marked "Pwd". We recommend immediately changing the default password to protect your machine from unauthorized access.

14 Manual wireless setup

If the wireless setup is not successful, try to set up the connection manually.




Find the SSID (Network Name) and Network Key (Password) on your wireless access point/router.

If you cannot find this information, ask your network administrator or wireless access point/router manufacturer.


Continue to the next column ↗

➤ MFC-J1355DW / MFC-J1360DW / MFC-J1365DW
MFC-J1367DW / MFC-J4355DW

1. Go to your machine, and press  or **Wi-Fi** on the panel.
2. Press **OK** to select [Find Wi-Fi Network]. The [Enable WLAN?] message appears on the LCD.
3. Press **▶** to select Yes.
4. Select the SSID (Network Name) for your access point/router and enter the Network Key (Password).

For more information on how to enter text, see *Enter Text on Your Brother Machine* in the *Online User's Guide*.

➤ MFC-J1410DW / MFC-J4555DW

1. Go to your machine and press  > [Find Wi-Fi Network] > [Yes].
2. Select the SSID (Network Name) for your access point/router and enter the Network Key (Password).

When the wireless setup is successful, the LCD displays [Connected]. Go to step **13** to download the app or software.

If still not successful, visit support.brother.com for FAQs and Troubleshooting.

For detailed machine information and product specifications, see the *Online User's Guide* at support.brother.com/manuals.