



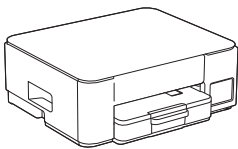
Operation Videos:
www.95105369.com



1. Search for the product model
2. Click on the operation video

- This product **requires charging** before printing. Please read the instructions carefully and perform the charging process before starting to print.
- Read the *Product Safety Guide* first, then read this *Quick Setup Guide* for the correct installation procedure.

1 Unpack the machine and check the components



Inbox Ink Bottles*4



Power Cord



Quick Setup Guide
Product Safety Guide
Reference Guide



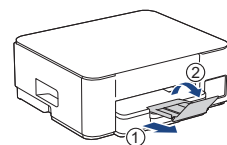
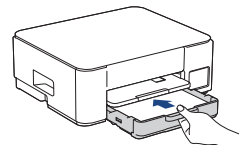
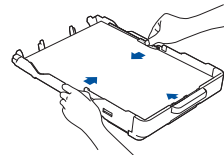
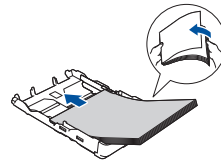
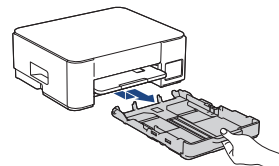
USB Cable

Remove the protective tape and the film covering the machine.

NOTE

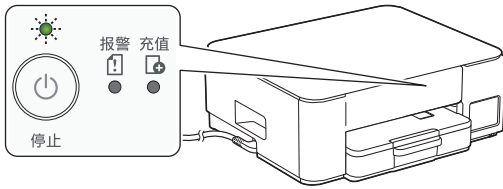
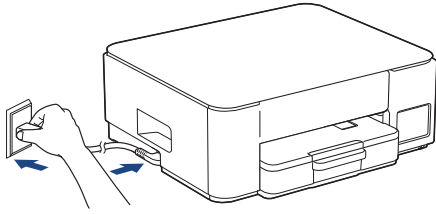
- The illustrations in this guide may not match your model exactly, but the steps are the same for each model.
- Save all packing materials and the box in case you need to ship your machine.
- We recommend using a USB 2.0 cable (Type A/B) that is no more than 2 metres long.

2 Load plain A4 paper in the paper tray



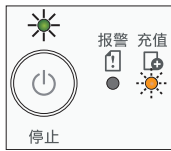
Continue to the next column

3 Connect the power cord

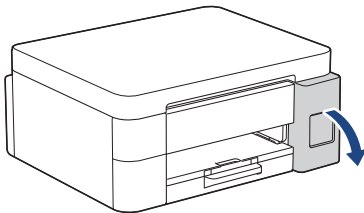


The machine powers on automatically and the Power LED is flashing.

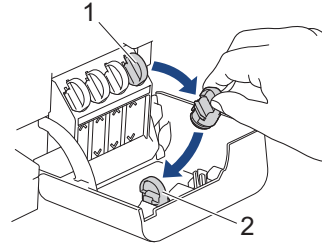
4 Fill the ink tanks with inbox ink



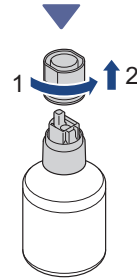
After waiting for a moment, confirm that the Power LED is lit and the Charge LED is flashing, and then proceed to the next step.



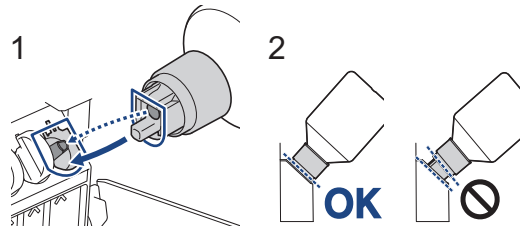
Open the ink tank cover.
(The illustrations in this guide may not match your model exactly, but the steps are the same for each model.)



Remove the cap (1) and place it inside the back of the cover (2).



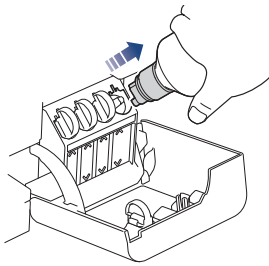
Remove the ink bottle cap.



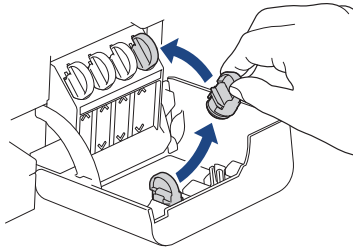
Align the bottle so that the pin on the ink tank can be inserted into the hole in the bottle, as shown in (1).

Slide the bottle onto the pin at the angle shown in (2) until the cap is flush with the ink tank surface. (You will hear a click when you insert it for the first time.)

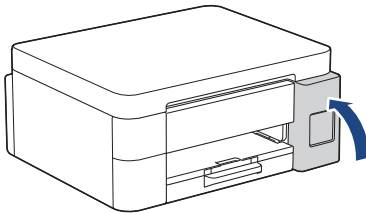
The bottle will support itself when in the correct position and the ink will fill the tank automatically. If the ink flow does not start automatically or if the tank fills very slowly, carefully remove and reinsert the bottle.



When finished, remove the bottle, pulling the nozzle slowly so the ink does not spill.

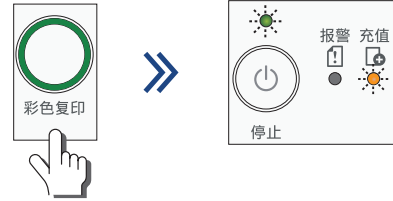


Remove the cap from inside the ink tank cover and seal the ink tank.



After filling all of the ink tanks, close the ink tank cover.

5 Start the initial cleaning

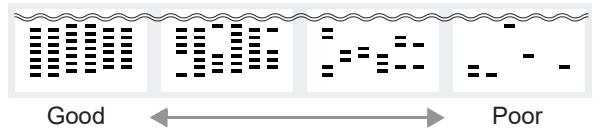


Press and hold the **Colour Copy** button for three seconds to start the initial ink system cleaning. During the initial cleaning, both the Power and Charge LEDs will flash. Cleaning can take a few minutes.



When the initial ink system cleaning has finished, the machine prints the Print Quality Check Sheet.

6 Check the print quality



Check the Print Quality Check Sheet. To improve the print quality, clean the print head. See the *Reference Guide*.

7 Connect your mobile device and charge printable pages

- Make sure you have installed WeChat to your mobile device.
- Make sure your machine and mobile device are connected to the same network.

1. Visit setup.brother.com and install **Brother Mobile Connect** to use your machine and charge printable pages from your mobile device.




setup.brother.com

2. Start **Brother Mobile Connect** on your mobile device.
3. Follow the on-screen instructions to register your machine to **Brother Mobile Connect**. When the registration is completed, the Home screen of **Brother Mobile Connect** displays your model name. Tap **云充功能设置** on the Home screen.

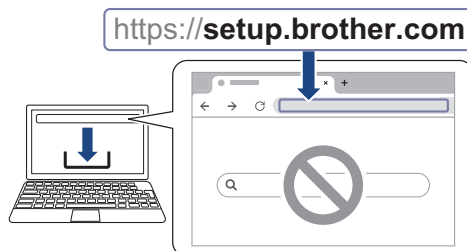


4. Follow the on-screen instructions to add an administrator's account for charging.
5. Charge the number of printable pages using WeChat Mini Program for charging.

Continue to the next column 

8 (For PC Users only) Connect with your PC

When using a Wireless LAN (Wi-Fi) connection, make sure your machine and computer are connected to the same network.



Visit setup.brother.com to download and install Brother software with your computer.



Follow the on-screen instructions and prompts.

Setup Finished

Now you are ready to print or scan from this machine.