

Refer to the operation manual for detailed instruction.

Podrobný návod naleznete v uživatelské příručce.

A részletes utasításokért lásd a Használati utasítást.

Szczegółowe informacje znajdują się w instrukcji obsługi.

За подробни инструкции, направете справка с ръководството за работа.

Pentru instrucțiuni detaliate consultați manualul de utilizare.

START 11.5mm

1 [Diagram of a bobbin being inserted into the bobbin case]

2 [Diagram of a bobbin being inserted into the bobbin case]

3 [Diagram of a bobbin being inserted into the bobbin case]

4 [Diagram of a bobbin being inserted into the bobbin case]

5 [Diagram of a bobbin being inserted into the bobbin case]

6 [Diagram of a bobbin being inserted into the bobbin case]

7 [Diagram of a bobbin being inserted into the bobbin case]

8 [Diagram of a bobbin being inserted into the bobbin case]

9 [Diagram of a bobbin being inserted into the bobbin case]

10 [Diagram of a bobbin being inserted into the bobbin case]

11 [Diagram of a bobbin being inserted into the bobbin case]

12 [Diagram of a bobbin being inserted into the bobbin case]

OK!



Refer to the operation manual for detailed instruction.

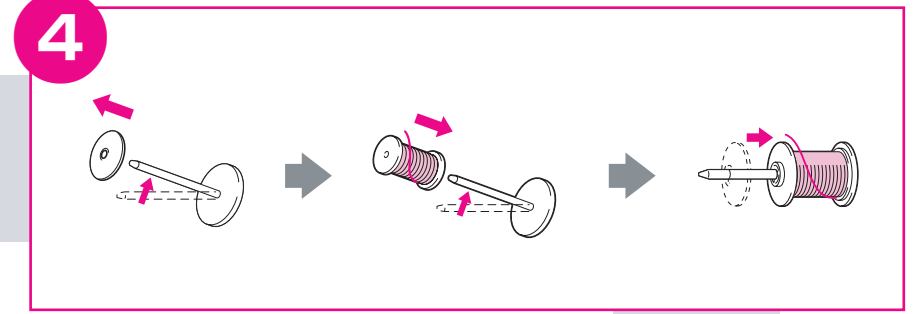
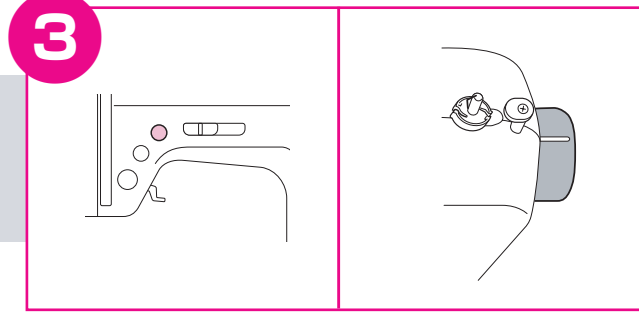
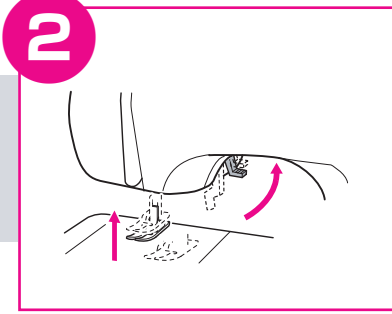
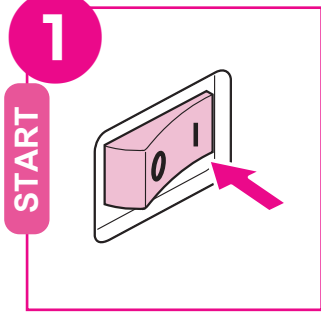
Podrobný návod naleznete v uživatelské příručce.

A részletes utasításokért lásd a Használati utasítást.

Szczegółowe informacje znajdują się w instrukcji obsługi.

За подробни инструкции, направете справка с ръководството за работа.

Pentru instrucțiuni detaliate consultați manualul de utilizare.



OK!

