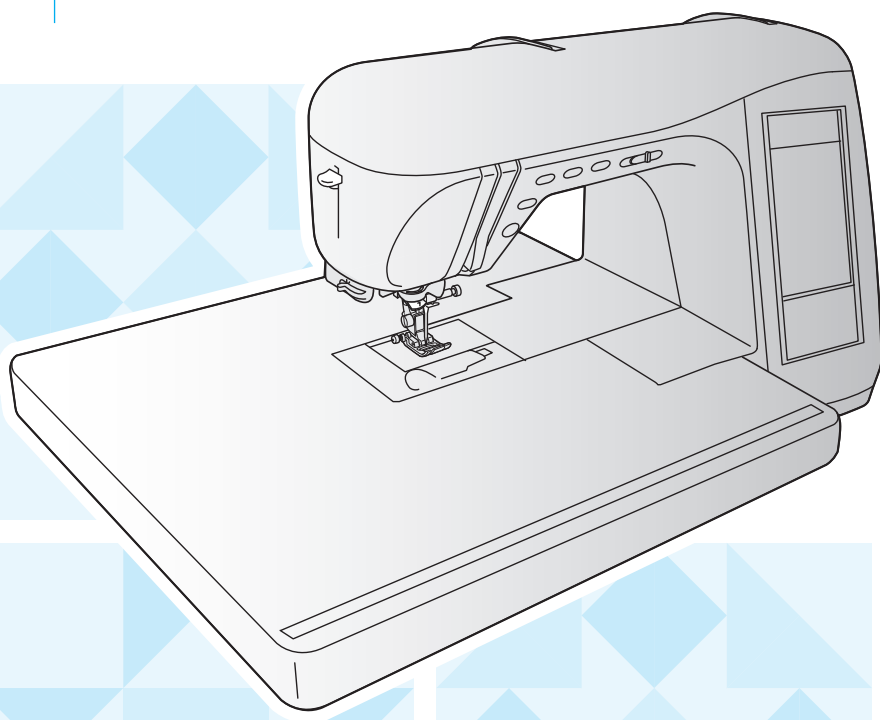


快速操作指南



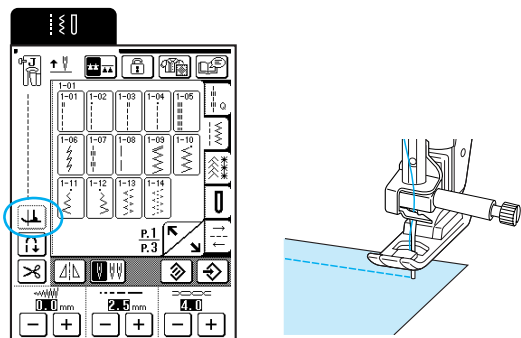
目录

特殊功能	2
I) 枢轴功能	2
II) 自动布料感应器系统	2
III) 自动升降送布牙 (自由模式)	3
自由绗缝压脚 “C”	3
开口式自由绗缝压脚 “O”	4
自由波纹绗缝压脚 “E”	4
IV) 返回开始键	5
V) 初始针迹页	5
梭芯绕线	6
放入梭芯	6
面线穿线	7
选择针迹花样	8
实用针迹	8
字母 / 装饰针迹	8
其他	9
针迹花样摘要	10
实用针迹	10
字母 / 装饰针迹	11

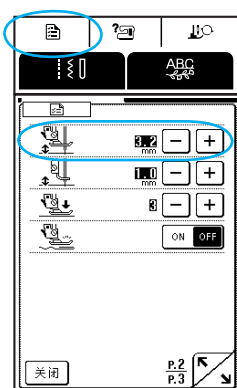
有关详细说明，请参见使用说明书。

◆ I) 枢轴功能

该功能在改变缝制方向时特别有用。缝纫机停止时针会被放低（在布料中）并且在按下“开始/停止”按钮时压脚会自动抬到适当的高度。

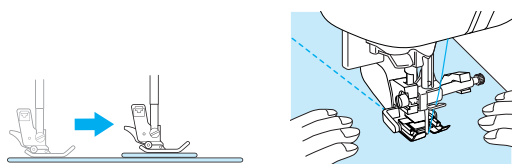


从设置画面可以将压脚调整到三种高度之一（3.2毫米、5.0毫米和7.5毫米）。

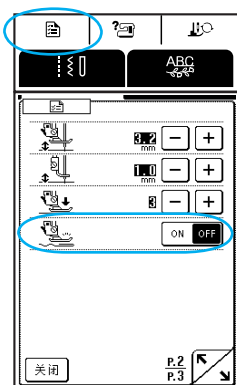


◆ II) 自动布料感应器系统

内部感应器在缝制过程中自动感应布料厚度并自动调整为合适的压脚压力，因此布料可顺利送入。该功能在缝制厚缝边或送布牙抬起状态下进行绗缝时非常有用。

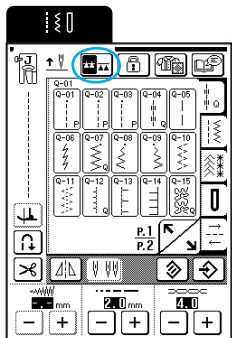


缝制时自动布料感应器系统连续运行。



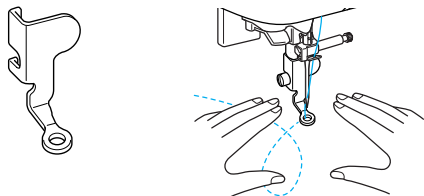
◆ III) 自动升降送布牙（自由模式）

该功能在自由绗缝时非常有用。触摸送布牙升降键，送布牙自动放低以便自由绗缝布料。增加压脚抬起的高度并调整面线张力进行自由缝制。此外，当选择该按钮缝制时，送布牙自动降低。

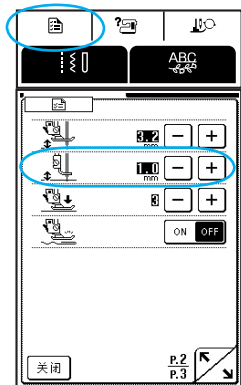


自由绗缝压脚“C”

该压脚用于使用直线针迹进行自由缝制。请务必选择中心（中央）针位的直线针迹（ 或 ）。



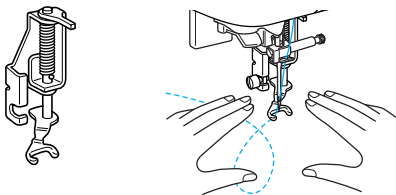
缝纫过程中，内部感应器会自动感应布料厚度，并且压脚抬起到设置画面中指定的高度。缝制弹性布料等特殊布料时，增加压脚抬起的高度以方便缝制。



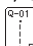
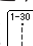
开口式自由绉缝压脚“0”

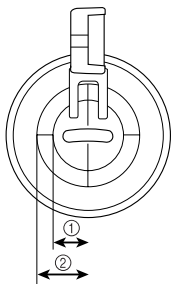
该压脚在使用曲折或装饰针迹进行自由绉缝或在厚度不均匀的布料上进行直线自由绉缝时使用。

(注意：当使用开口式自由压脚“0”时，无法进行自由压脚高度设置。)

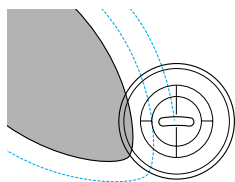
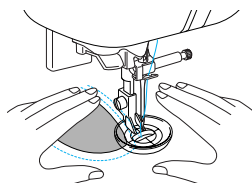


自由波纹绉缝压脚“E”

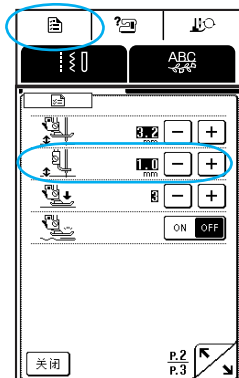
该压脚用于在某个主题花样或者针迹的周围创建等间距的针迹，有时称为波纹绉缝。选择中心（中央）针位的直线针迹（ 或 ），并参考压脚上的度量值进行缝制。



- ① 6.4毫米
(约1/4英寸)
- ② 9.5毫米
(约3/8英寸)



缝纫过程中，内部感应器会自动感应布料厚度，并且压脚抬起到设置画面中指定的高度。缝制弹性布料等特殊布料时，增加压脚抬起的高度以方便缝制。

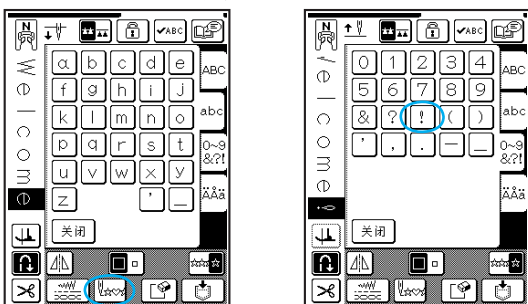


◆ IV) 返回开始键



如果组合针迹花样的缝制已停止，按此键可从花样的开头重新缝制。（在此例中，缝制从“W”开始。）

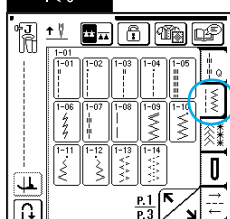
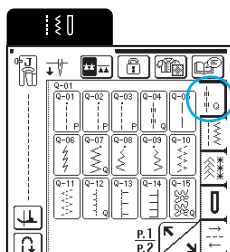
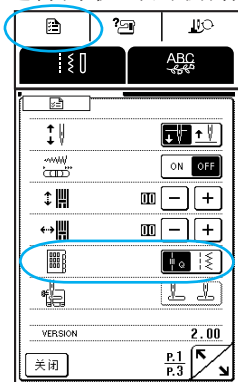


此外，如果缝制停止时按此键，可以在组合针迹花样的结尾处添加花样。（在本示例中，添加了“!”。）



◆ V) 初始针迹页

选择开机时的初始画面为拼布针迹  还是实用针迹 .

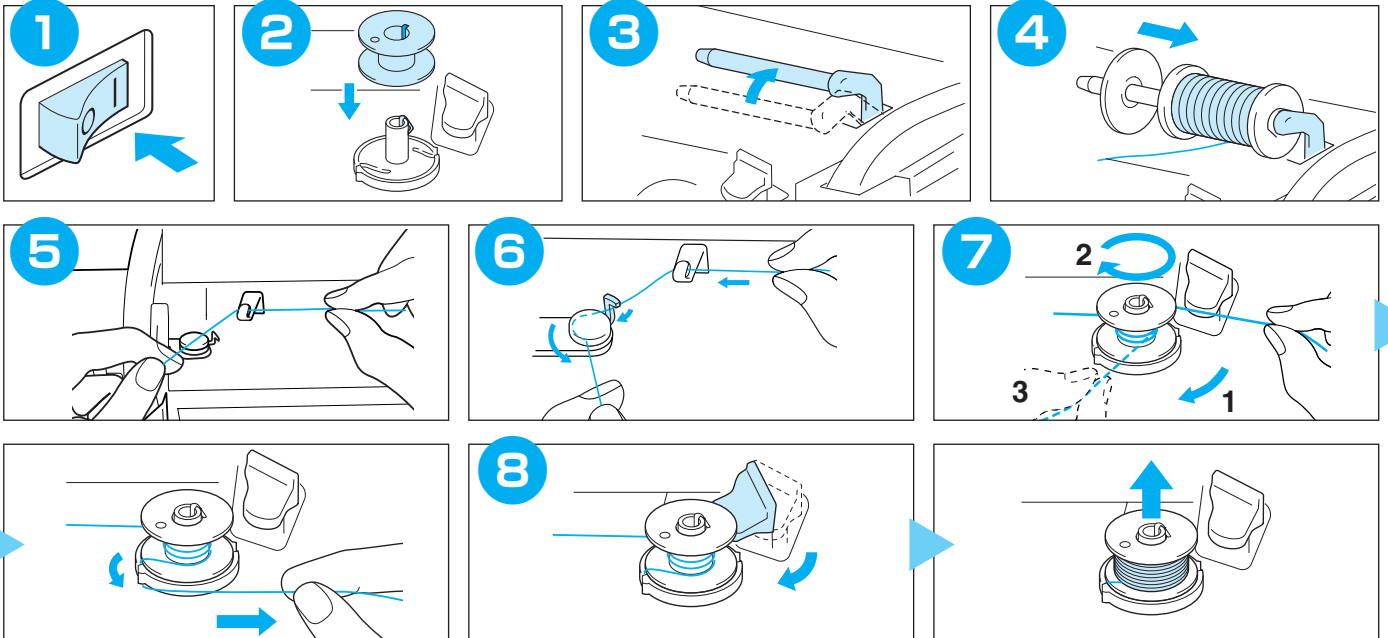
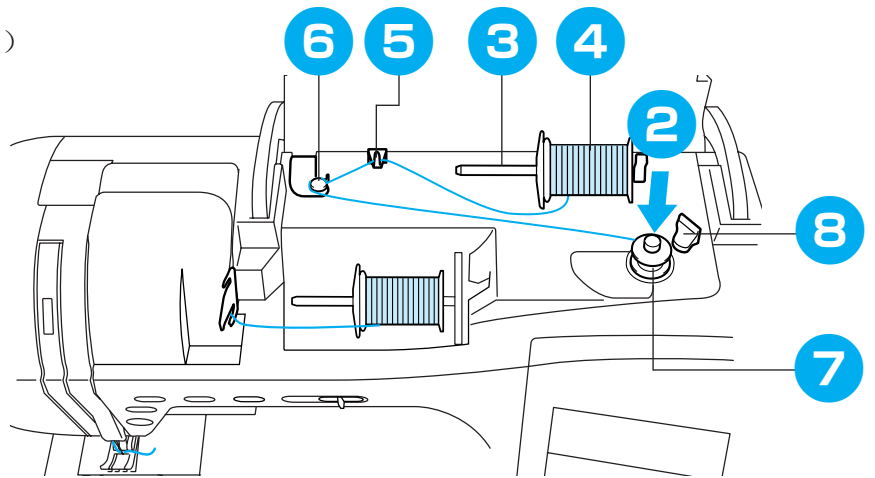


梭芯绕线

遵循下图中编号的顺序步骤。有关详细说明，请参见使用说明书。
只使用随机的梭芯或相同类型的梭芯。

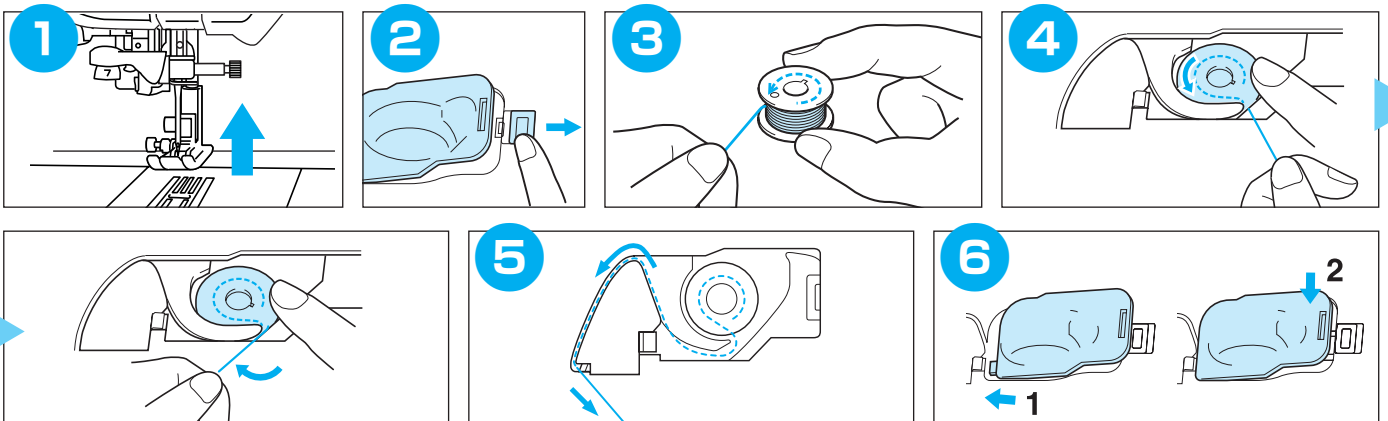


使用辅助的线筒轴

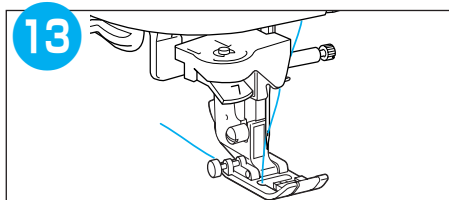
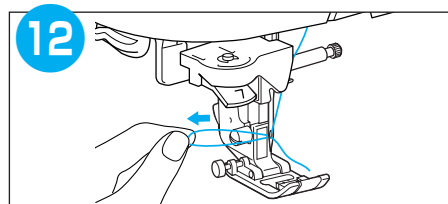
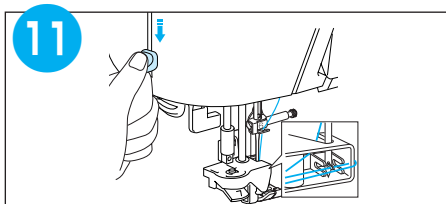
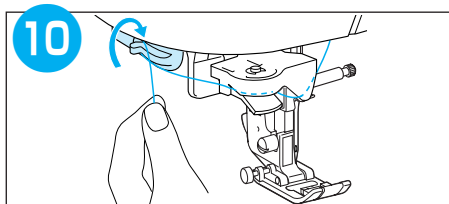
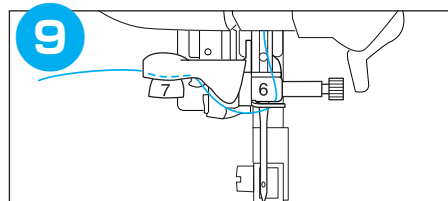
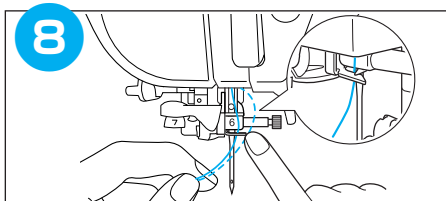
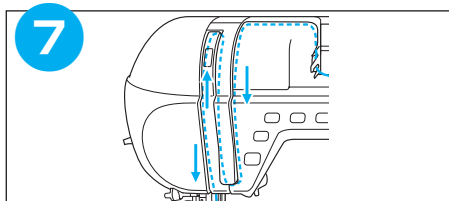
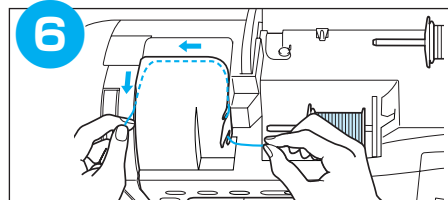
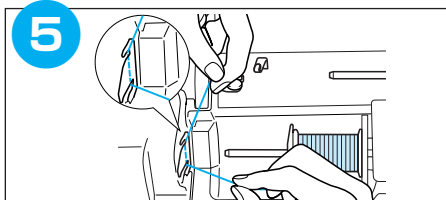
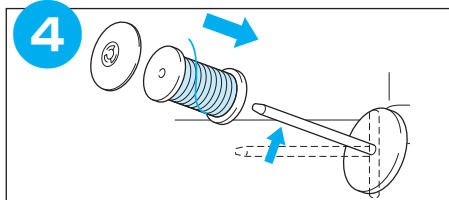
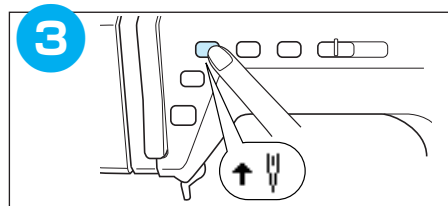
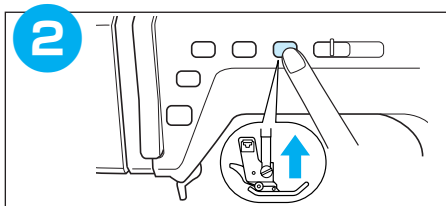
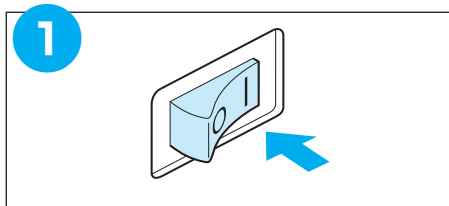
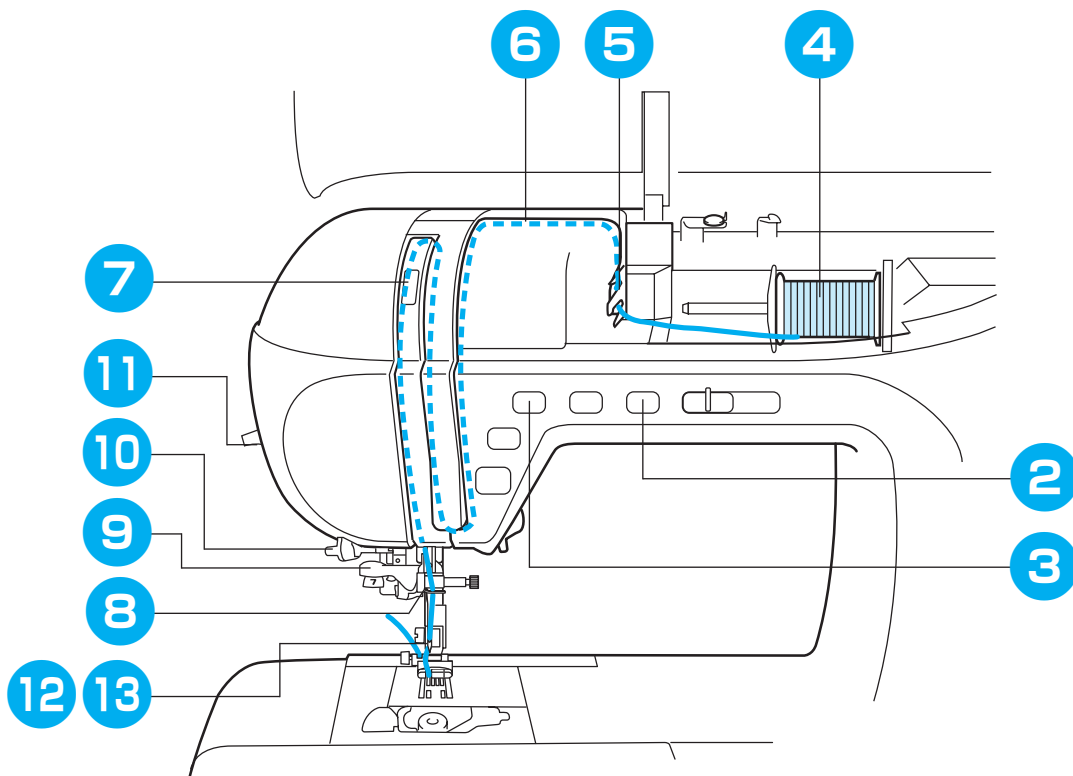


放入梭芯

有关详细说明，请参见使用说明书。



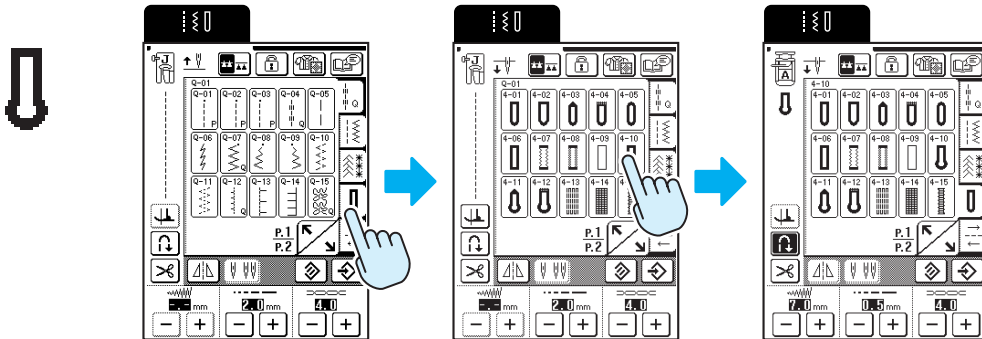
面线穿线



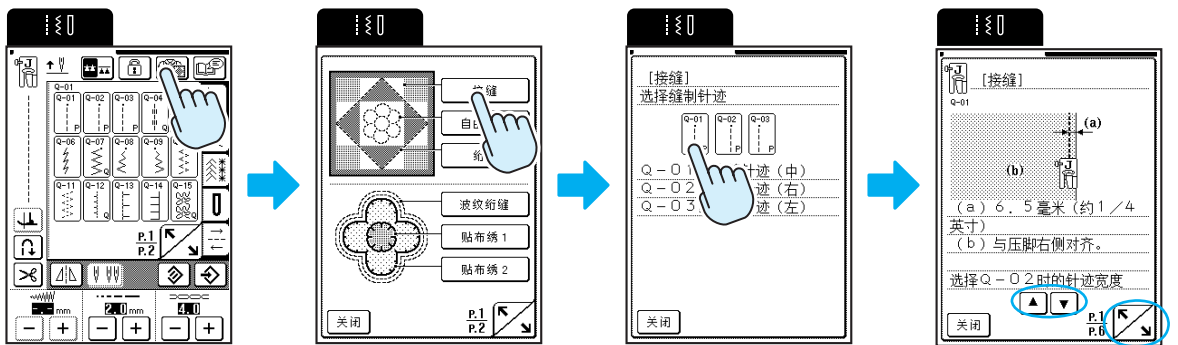
选择针迹花样

◆实用针迹

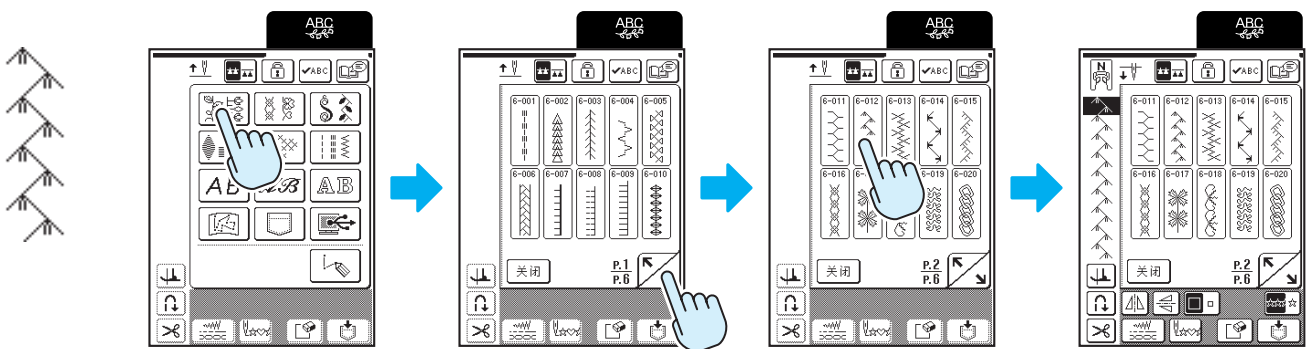
打开缝纫机时，画面将显示开机画面。触摸画面显示实用针迹。根据设置，会自动选择“Q-01 接缝针迹（中）”“1-01 直线针迹（左）”或“1-03 直线针迹（中）”。



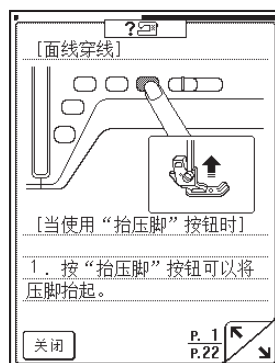
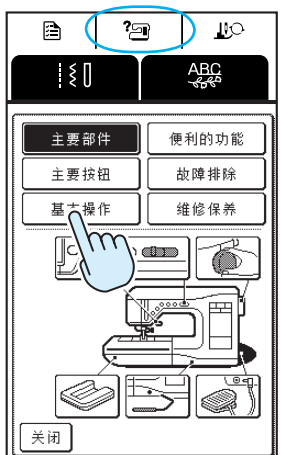
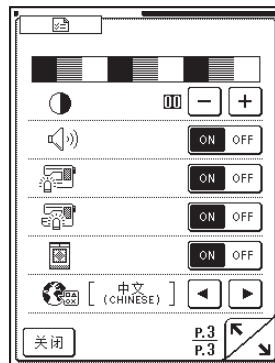
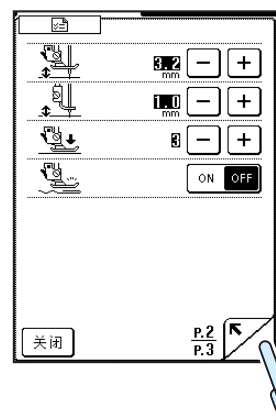
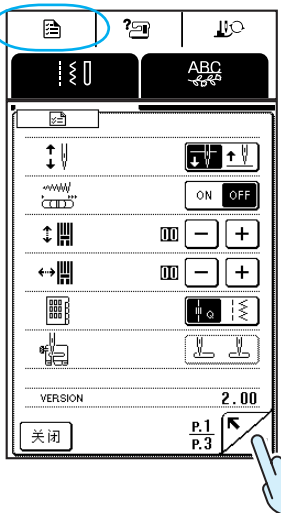
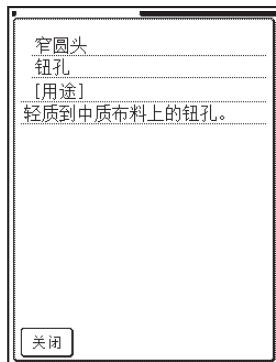
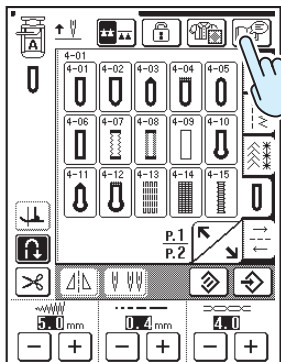
接缝



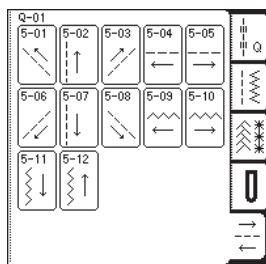
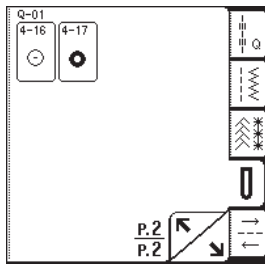
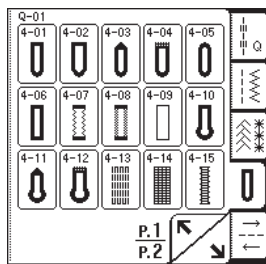
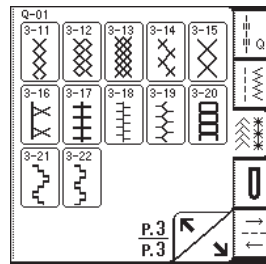
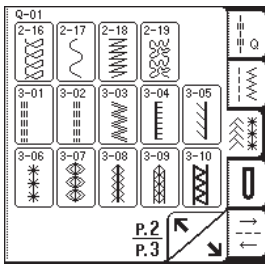
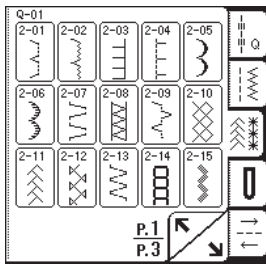
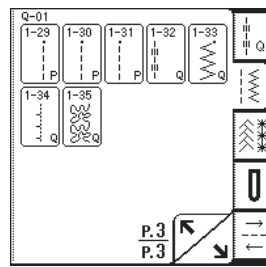
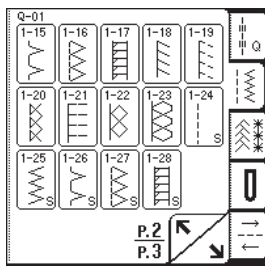
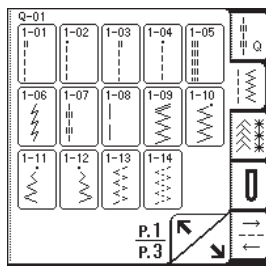
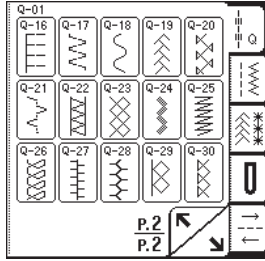
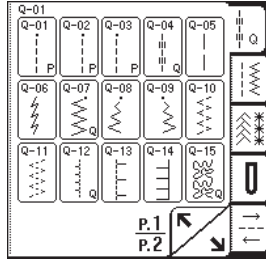
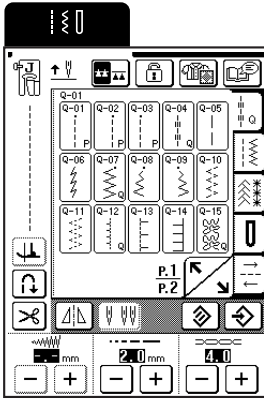
◆字母 / 装饰针迹



◆其他



◆ 实用针迹



◆字母 / 装饰针迹

