

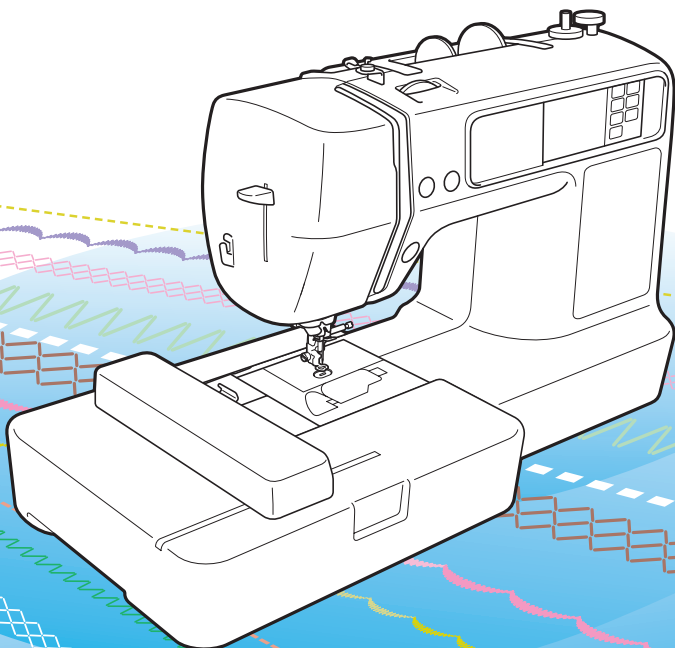
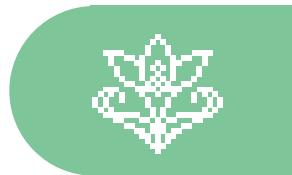
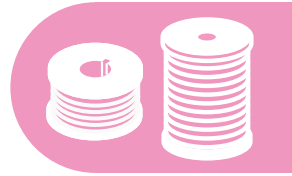
brother®

Quick Reference Guide

快速操作指南

快速導覽手冊

빠른 설정 가이드



Refer to the operation manual for detailed instruction.

Also, there are differences in the keys and screens depending on the display language.
In this guide, English screens are used for basic explanations.

有关详细说明，请参见使用说明书。

另外，按键和画面会因显示语言略有不同。
在本操作指南中，使用英文画面进行基本说明。

有關詳細說明，請參閱說明書。

此外，視顯示語言而定，按鍵和畫面各有不同。
在本手冊中，英文畫面用於基本解釋。

세부 지침에 대해서는 사용설명서를 참조하십시오.

또한 표시 언어에 따라 키와 화면에 차이가 있습니다.
이 가이드에서는 기본 설명에 영어 화면을 사용합니다.

Contents 目录 内容 내용

	Machine Features 刺繡機的特點	绣花机功能 자수기의 특징	2
	Bobbin Winding and Setting 捲底線與設定	梭芯绕线和设置 밀실 감기 및 설정	4
	Upper Threading 穿上線	面线穿线 윗실 끼우기	6
	Preparing to Embroider 準備進行刺繡	准备绣花 자수 준비	8
	Selecting Embroidery Patterns 選擇刺繡花樣	选择绣花花样 자수 패턴 선택	10
	Alphanumeric Character Patterns 字母數字文字花樣	字母、数字花样 문자 패턴	16
	Frame Patterns 外框花樣	框架花样 프레임 패턴	18
	Embroidery Pattern Color Change Table 刺繡花樣顏色變換表	绣花花样颜色变换表 패턴 실 색상표	19
	Color Thread Conversion Chart 彩線對照表	绣花线对照表 컬러 실 변환 차트	23

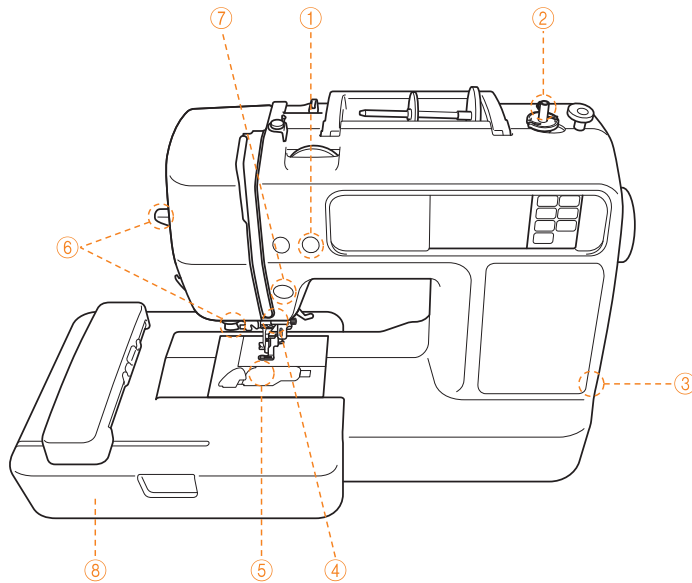


Machine Features

刺繡機的特點

绣花机功能

자수기의 특징



- ① **Automatic thread cutting:** The thread can be cut automatically after embroidering.
- ② **Fast bobbin winding system:** With the fast and simple bobbin winder, you can wind bobbins with one press of a button.
- ③ **USB port:** Embroidery patterns saved in a USB flash drive (USB flash memory) can be imported to the machine by plugging the USB flash drive directly into the USB port.
- ④ **Bright light:** The convenient LED lamp makes it easy to work on dark fabrics.
- ⑤ **Quick-set bobbin:** You can start embroidering without pulling up the bobbin thread.
- ⑥ **Easy-to-use needle threader:** You can thread the needle easily by one press of a lever.
- ⑦ **Lighting Start/Stop button:** When the green light is on, the machine is ready to embroider. A red or orange light indicates an error or that the machine is warming up.
- ⑧ **Embroidery:** You can embroider built-in embroidery patterns, alphanumeric characters, framed decorations, and designs from optional embroidery cards.

- ① **自动切线:** 绣花后可以自动剪线。
- ② **快速梭芯绕线系统:** 装有快速和简单的梭芯绕线器，能够通过按下一个按钮进行梭芯绕线。
- ③ **USB 端口:** 绣花花样存储在U盘中 (USB 闪存)，将U盘直接插入到USB端口上，以输入到绣花机中。
- ④ **照明灯:** 近处的LED灯可方便缝制深色布料。
- ⑤ **快装梭芯:** 不用拉起梭芯线，便可直接开始绣花。
- ⑥ **易于使用的穿线器:** 按下拔杆，轻松穿线。
- ⑦ **开始/停止按钮指示灯:** 绿灯亮时，绣花机绣花准备就绪。红灯或橙色灯亮表示出错或者绣花机正在暖机。
- ⑧ **绣花:** 可以绣出内藏绣花花样、字母、数字、装饰边框，以及可选绣花卡上的图案。

- ① **自動切線裝置:** 刺繡完成後，可自動將線切斷。
- ② **快速捲底線系統:** 透過快速且簡單的捲底線裝置，您可藉由按下按鈕來捲底線。
- ③ **USB 插槽:** 儲存在 USB 媒體 (隨身碟) 的刺繡花樣，可透過將 USB 媒體直接插入 USB 插槽來匯入。
- ④ **亮光:** 此方便的 LED 燈可讓您更輕鬆地處理深色布料。
- ⑤ **快速安裝底線:** 您可直接開始刺繡，無需再引起底線。
- ⑥ **“自動穿線”裝置:** 您可透過按下拉柄來輕鬆穿線。
- ⑦ **照明啟動/停止按鈕:** 綠燈亮起時，表示機器已準備好進行刺繡。紅燈或橘燈亮起時，表示發生錯誤或是刺繡機正在暖機。
- ⑧ **刺繡:** 您可刺繡內建的刺繡花樣、字母數字文字、外框花樣和選購刺繡卡中的設計。

- ① **자동 실 자르기:** 자수가 끝난 후 자동으로 실을 자를 수 있습니다.
- ② **빠른 밀실 감기 장치:** 실토리에 밀실을 손쉽게 빠르게 감을 수 있습니다.
- ③ **USB 포트:** USB 플래시 드라이브 (USB 플래시 메모리)에 저장된 자수 패턴은 USB 플래시 드라이브를 자수기의 USB 포트에 직접 꽂아서 불러올 수 있습니다.
- ④ **조명 장치:** 내장된 LED 조명 램프로 어두운 곳에서도 쉽게 작업할 수 있습니다.
- ⑤ **원터치 밀실 처리:** 자수 시작 전에 밀실을 끌어올리지 않고 바로 사용할 수 있습니다.
- ⑥ **간편한 뒷실 끼우기:** 레버를 내림으로써 손쉽게 바늘에 실을 끼울 수 있습니다.
- ⑦ **시작/멈춤 버튼:** 녹색 등이 켜져 있을 때 자수가 가능하며 예러가 났거나 준비 단계일 때 적색 또는 오렌지색 등이 들어옵니다.
- ⑧ **자수:** 내장된 자수 패턴, 문자, 프레임 장식 및 별매품 자수 카드의 디자인을 사용할 수 있습니다.

Bobbin Winding and Setting

梭芯绕线和设置

捲底線與設定

밑실 감기 및 설정



Follow the numbered steps below in order. Refer to the operation manual for detailed instruction.

按顺序执行以下编号的步骤。详细指导请参阅使用说明书。

依順序進行以下的編號步驟。有關詳細說明，請參閱說明書。

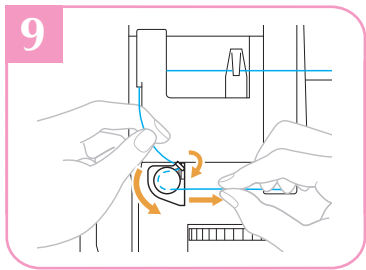
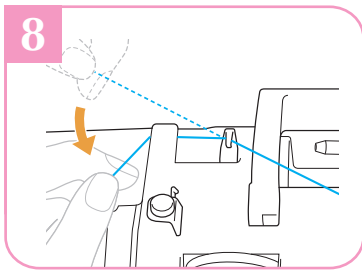
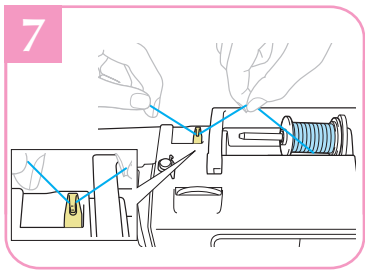
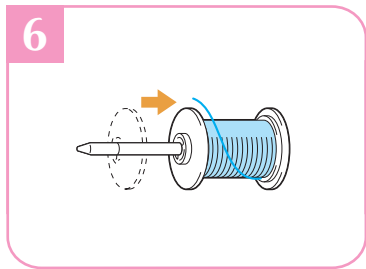
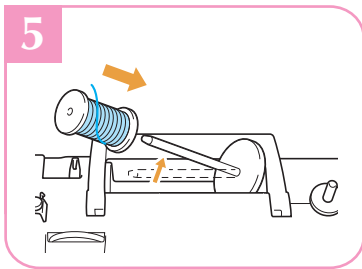
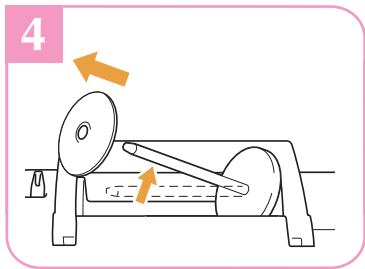
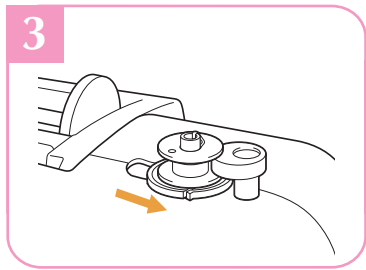
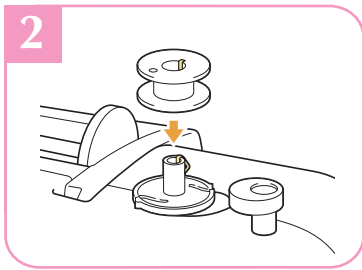
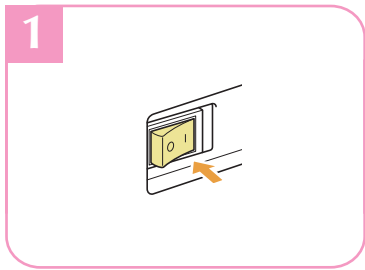
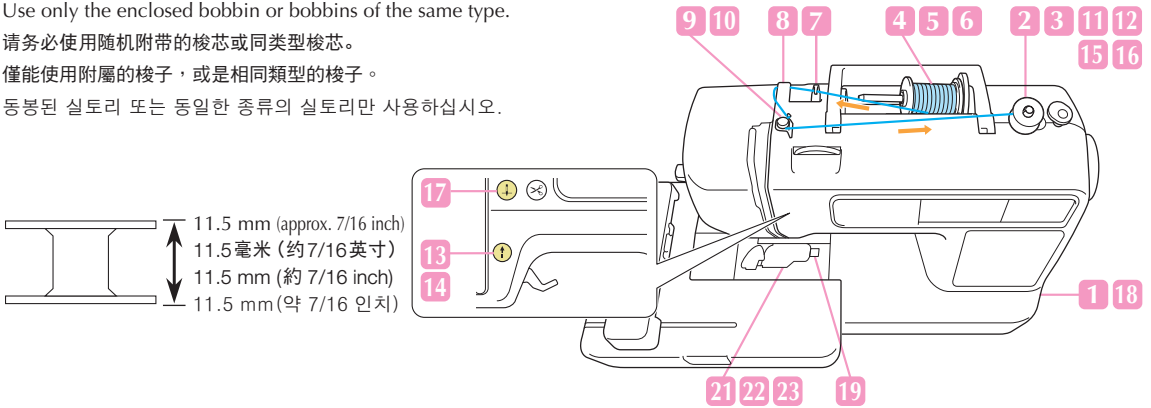
아래에 번호가 매겨진 단계를 순서대로 따르십시오. 세부 지침에 대해서는 사용설명서를 참조하십시오.

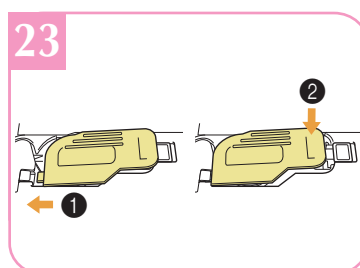
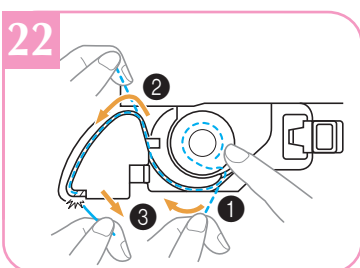
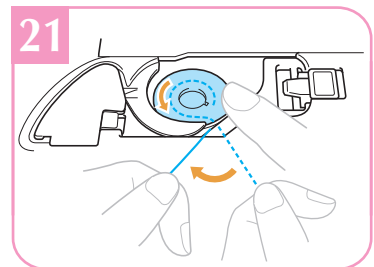
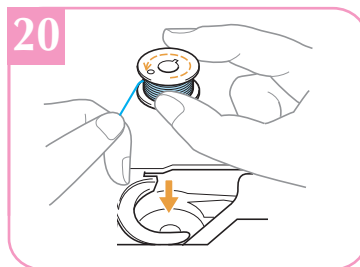
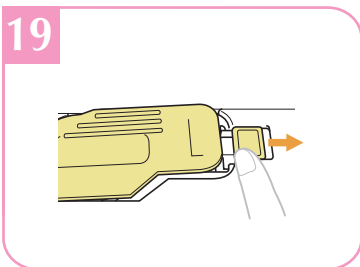
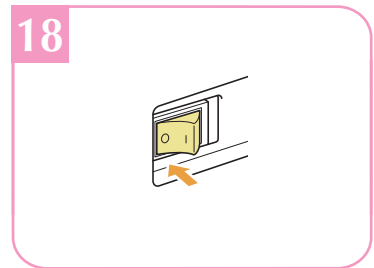
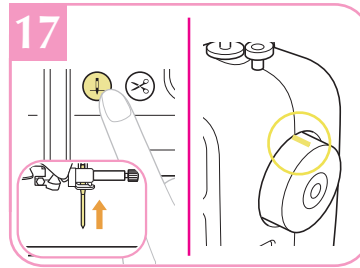
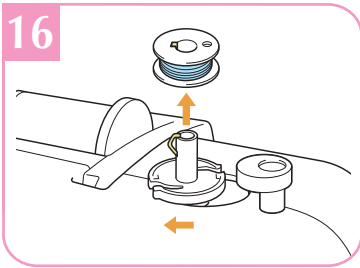
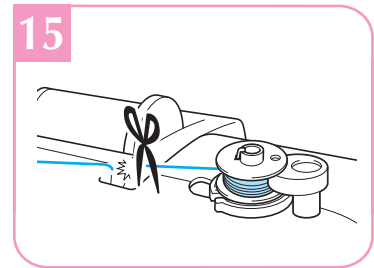
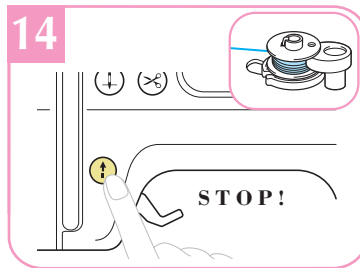
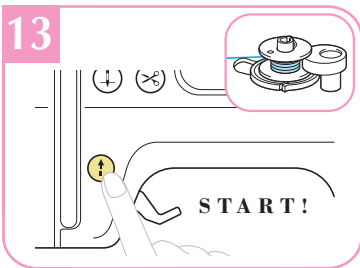
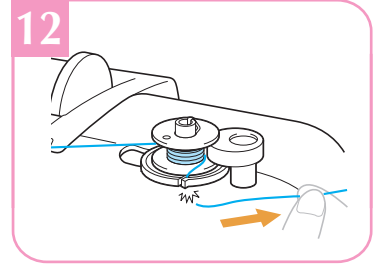
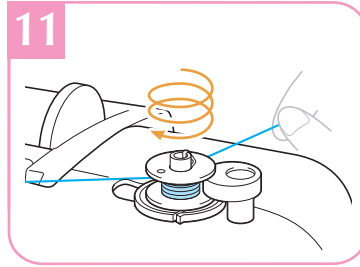
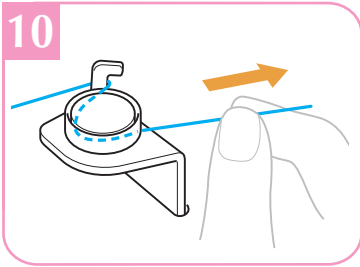
Use only the enclosed bobbin or bobbins of the same type.

请务必使用随机附带的梭芯或同类型梭芯。

僅能使用附屬的梭子，或是相同類型的梭子。

동봉된 실토리 또는 동일한 종류의 실토리만 사용하십시오.



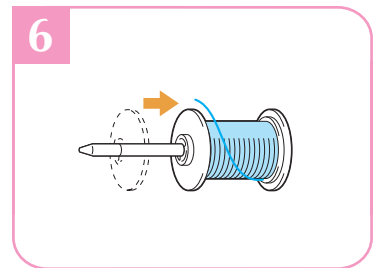
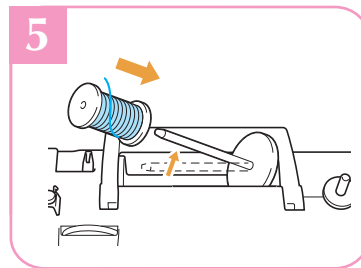
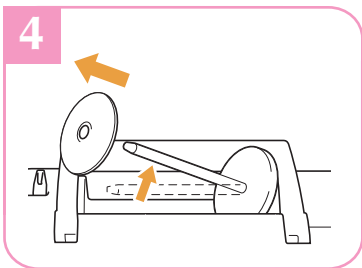
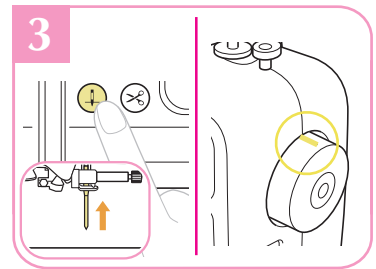
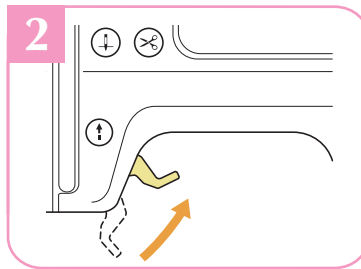
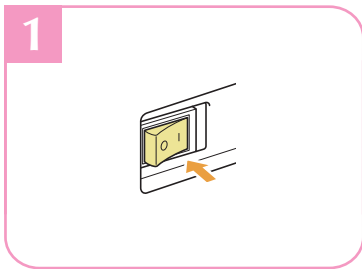
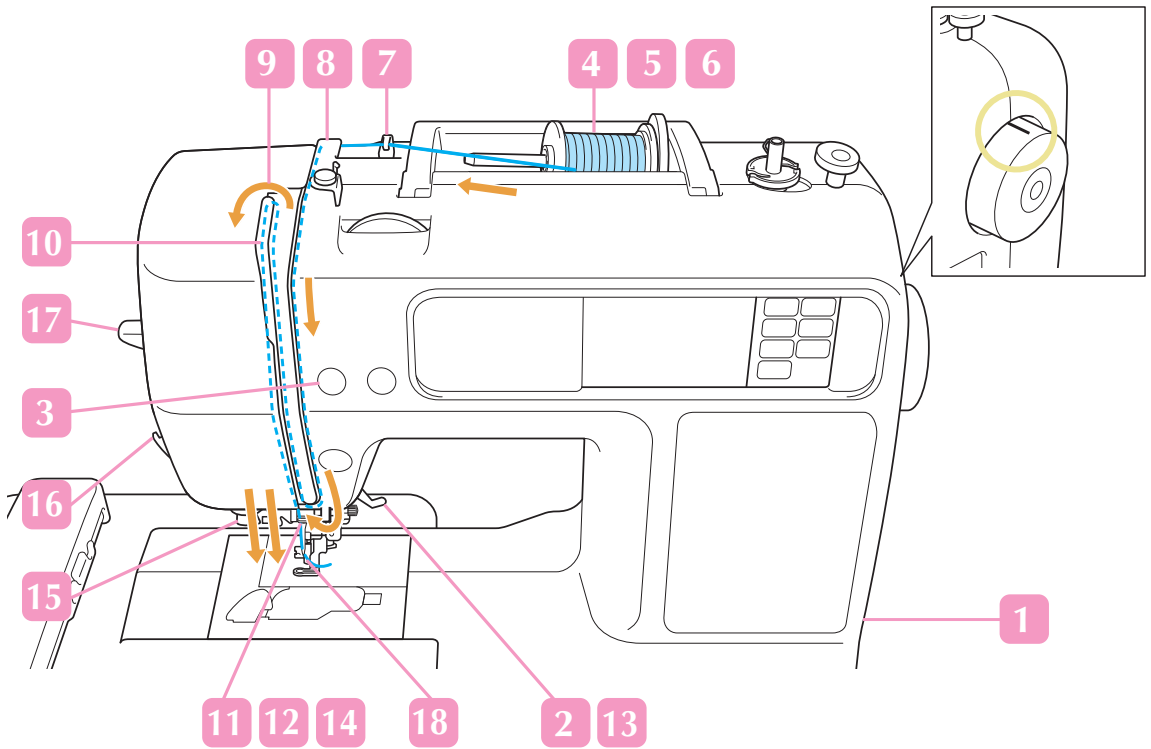
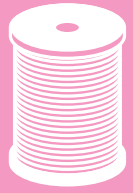


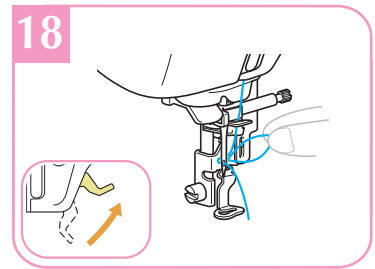
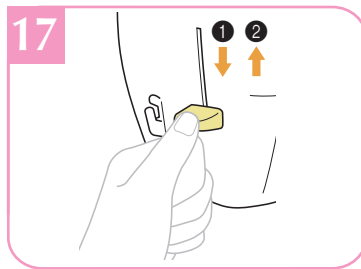
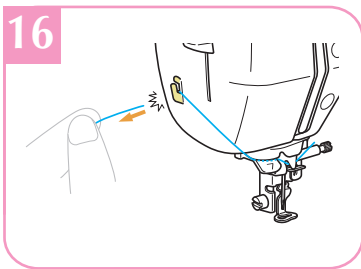
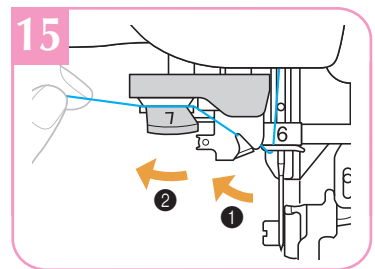
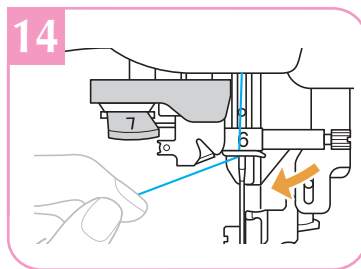
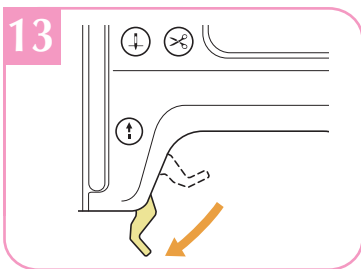
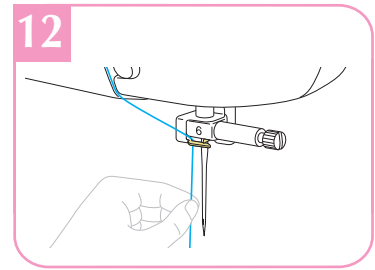
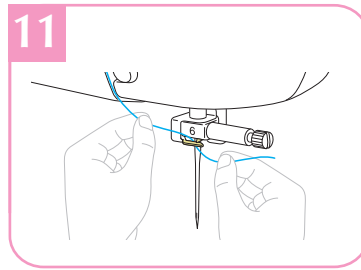
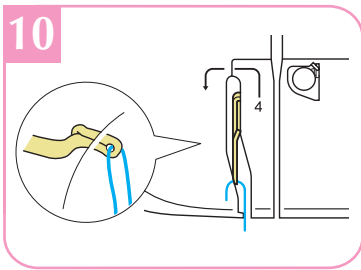
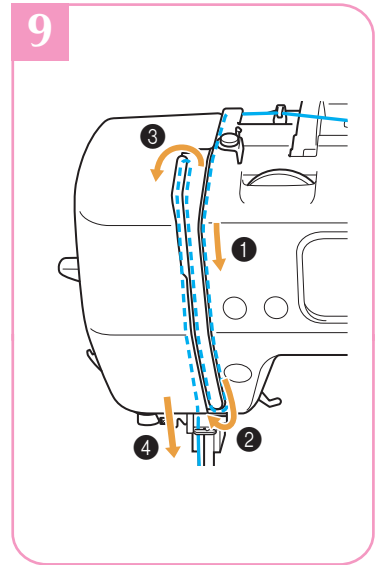
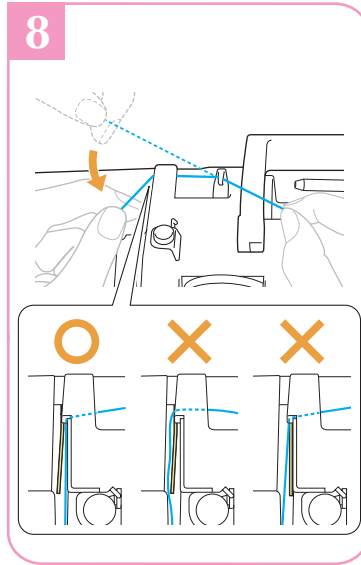
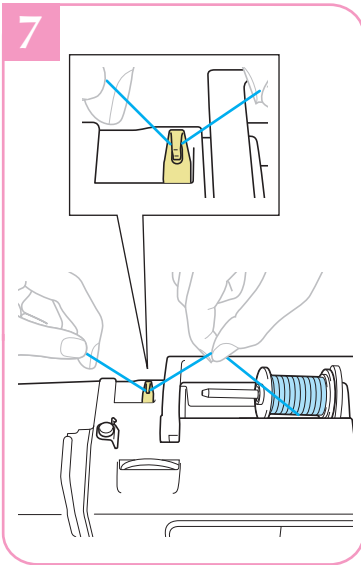
Upper Threading

面线穿线

穿上線

윗실 끼우기



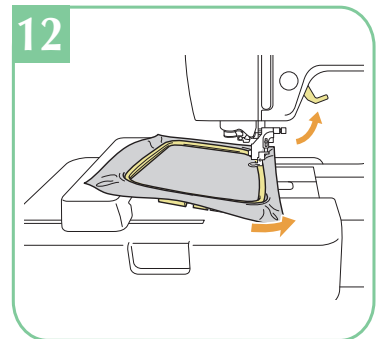
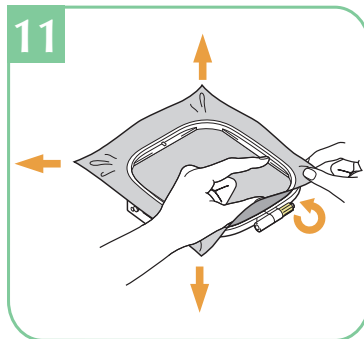
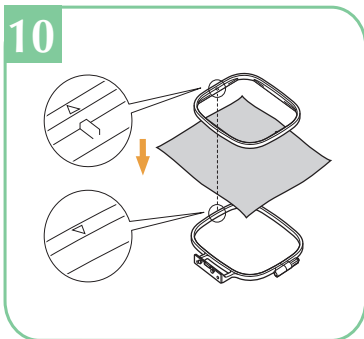
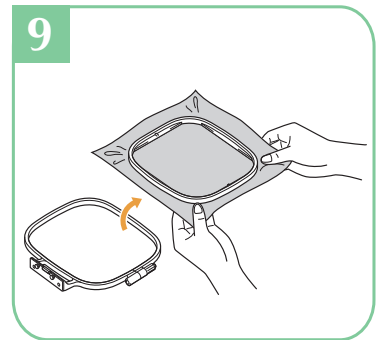
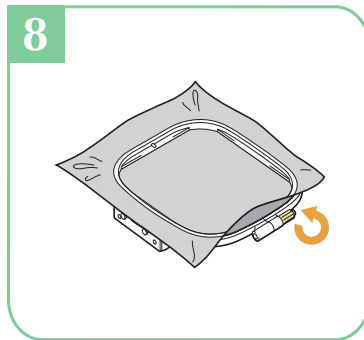
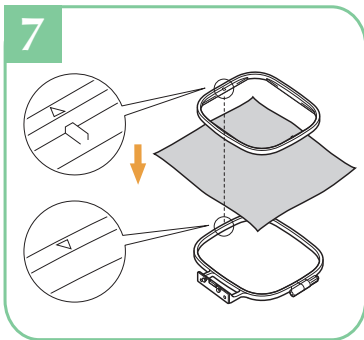
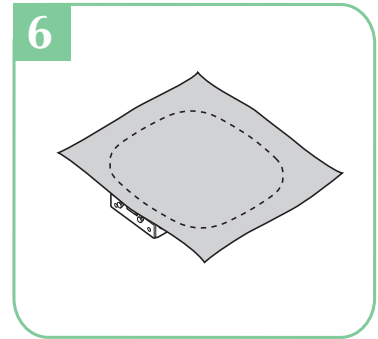
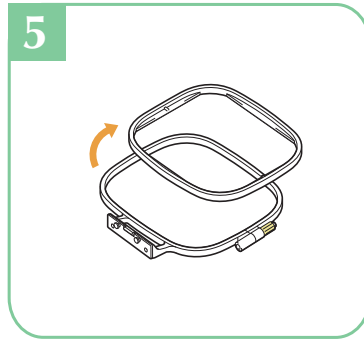
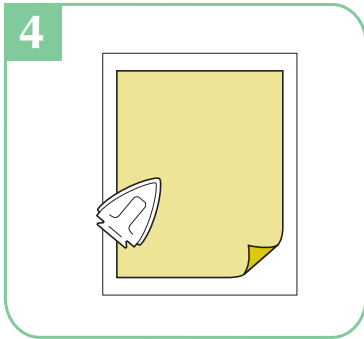
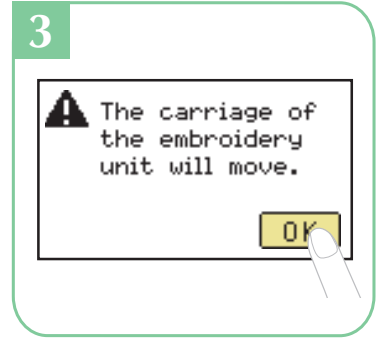
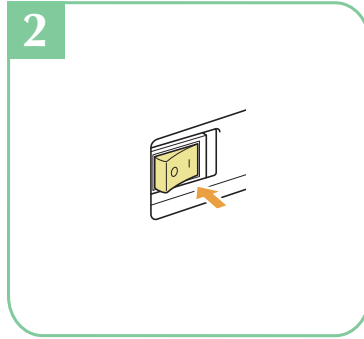
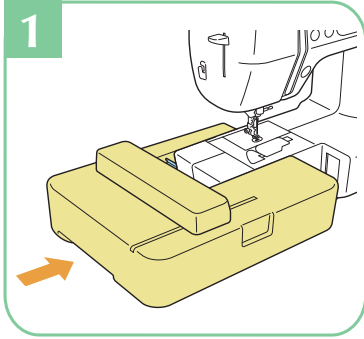


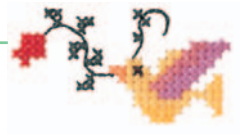
Preparing to Embroider

准备绣花

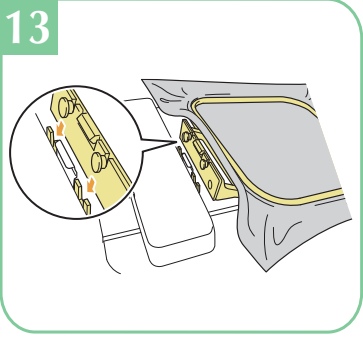
準備進行刺繡

자수 준비





13



Selecting Embroidery Patterns

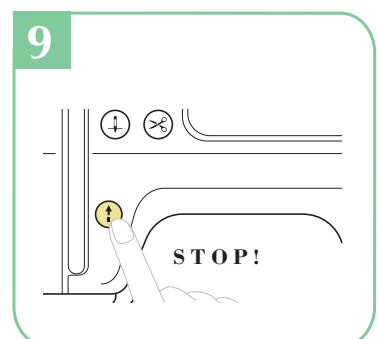
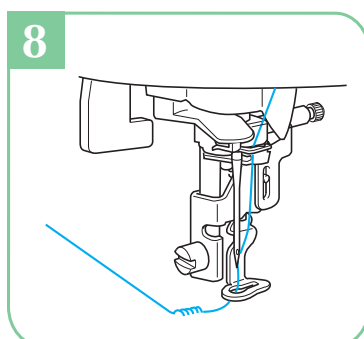
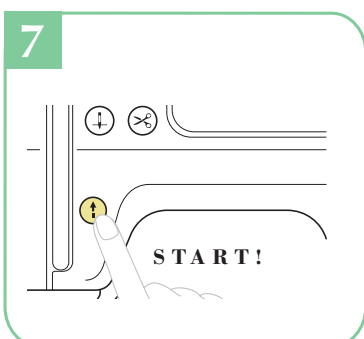
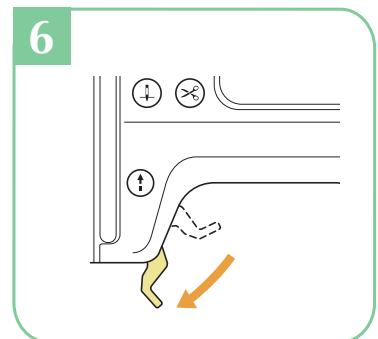
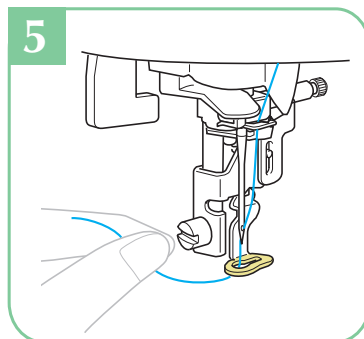
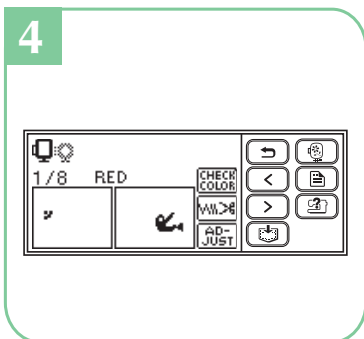
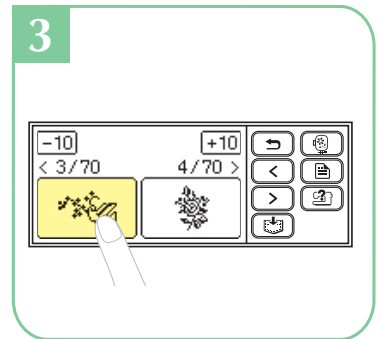
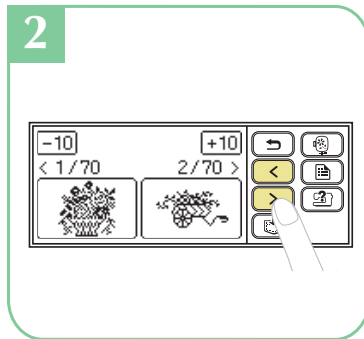
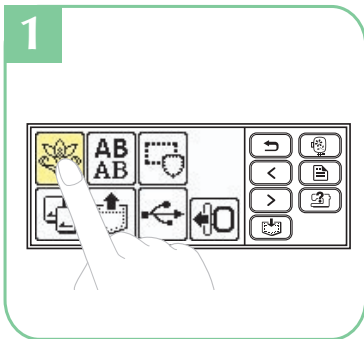
选择绣花花样

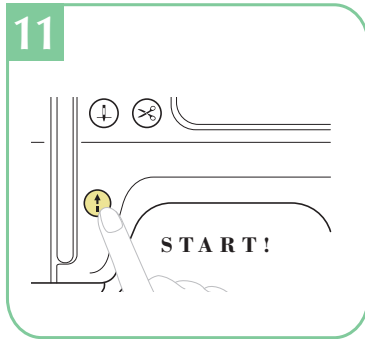
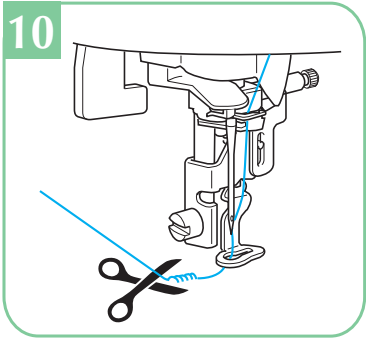
選擇刺繡花樣

자수 패턴 선택



- ◆ Selecting the built-in patterns
- ◆ 选择内置花样
- ◆ 選擇內建花樣
- ◆ 내장된 패턴 선택





Selecting Embroidery Patterns

选择绣花花样

選擇刺繡花樣

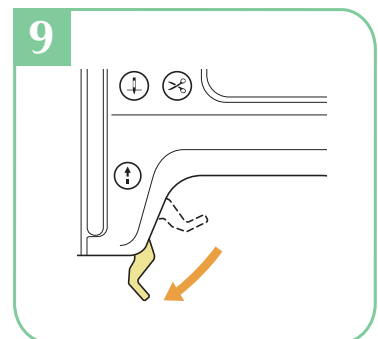
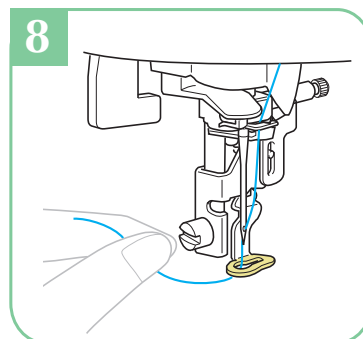
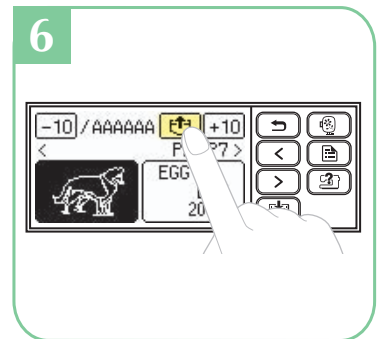
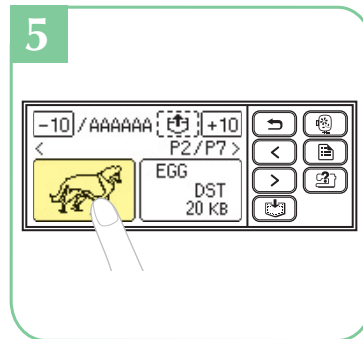
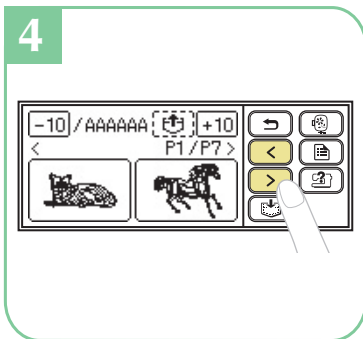
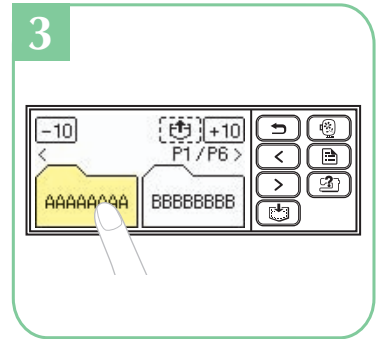
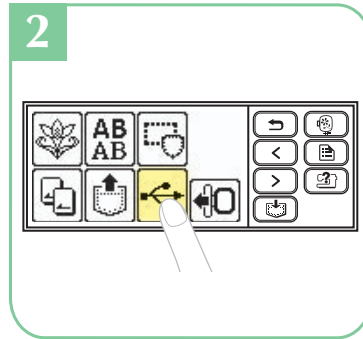
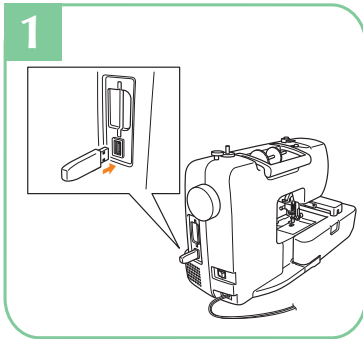
자수 패턴 선택

◆ Retrieving patterns from a USB flash drive (USB flash memory)

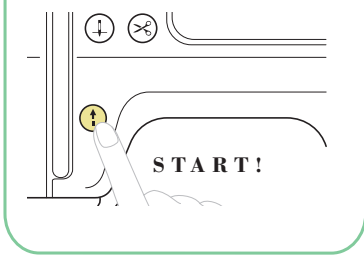
◆ 从U盘 (USB 闪存) 调用花样

◆ 自 USB 媒體 (隨身碟) 取得花樣

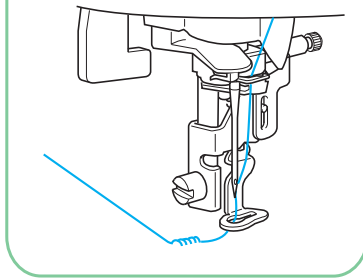
◆ USB 플래시 드라이브(USB 플래시 메모리)에서 패턴 불러오기



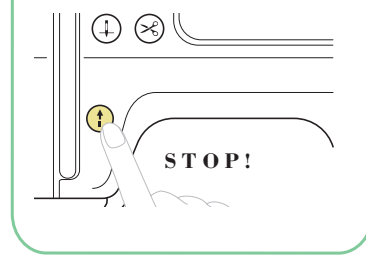
10



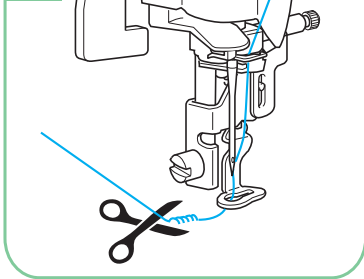
11



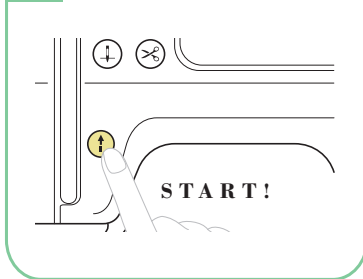
12



13



14



LCD Flow Chart

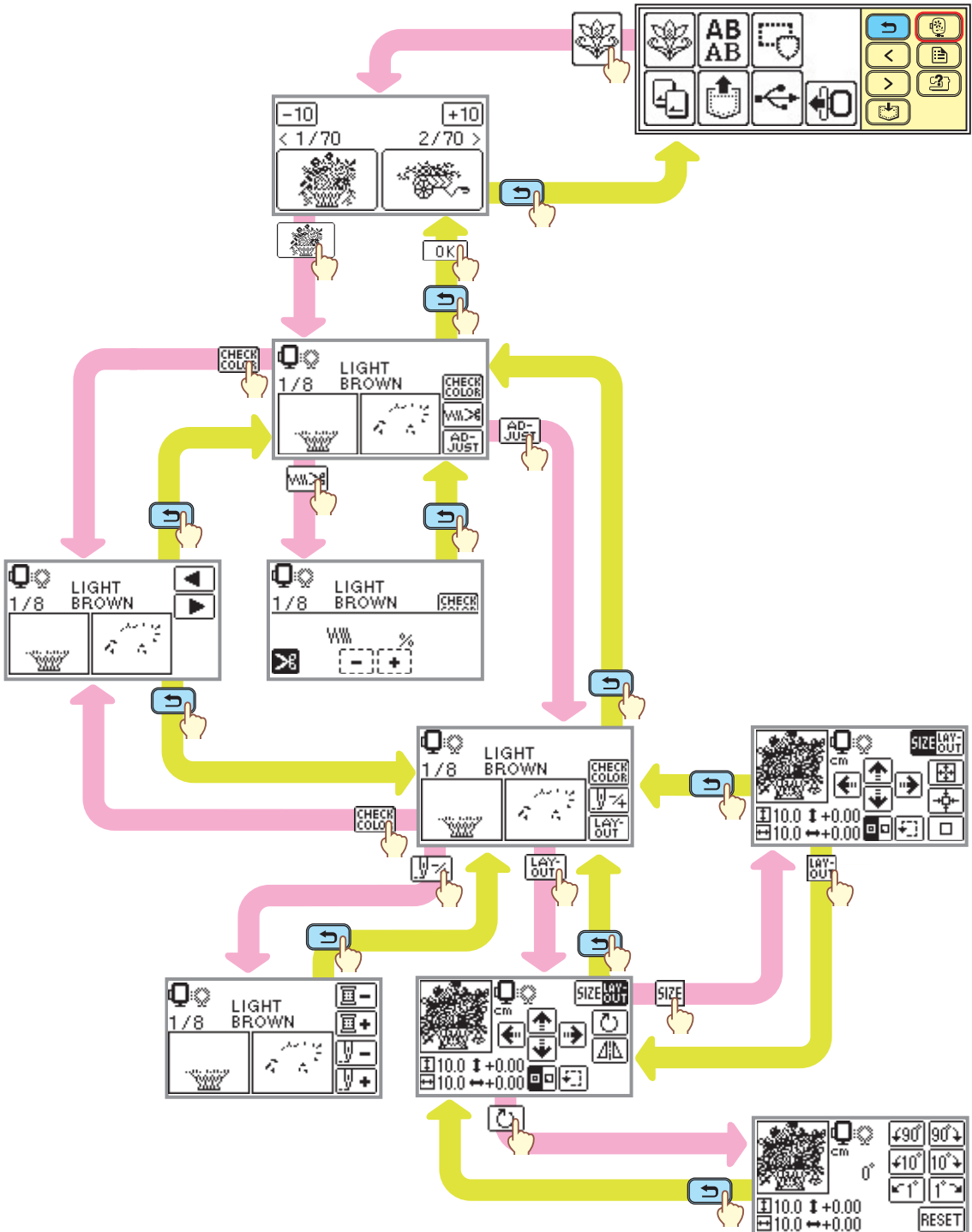
LCD 流程圖

LCD流程图

LCD 흐름도

- ◆ Embroidery Patterns
- ◆ 刺繡花樣

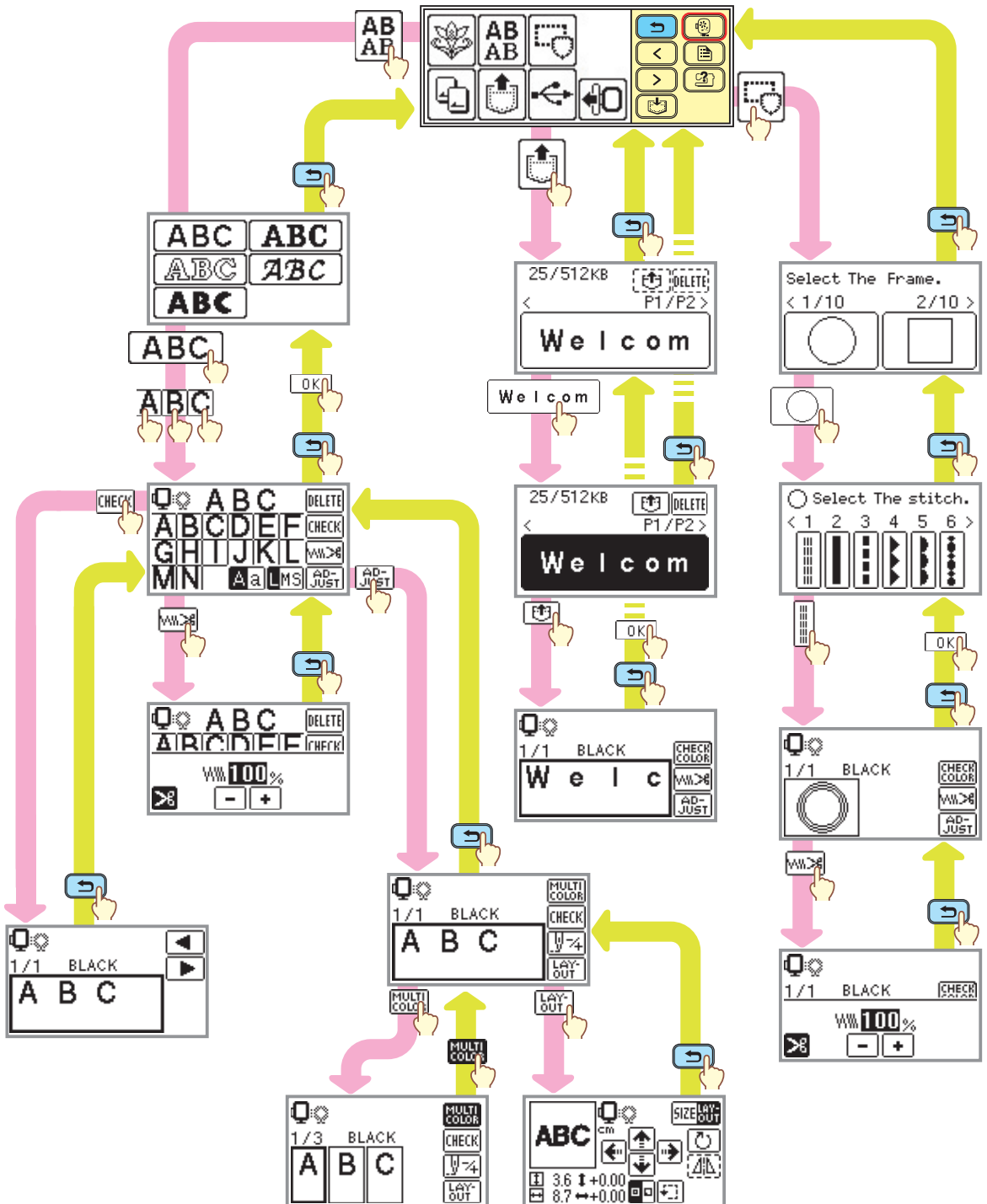
- ◆ 绣花花样
- ◆ 자수 패턴





- ◆ Other Patterns
- ◆ 其他花樣

- ◆ 其他花樣
- ◆ 기타 패턴



Alphanumeric Character Patterns

字母、数字花样

字母數字文字花樣

문자 패턴



ABC

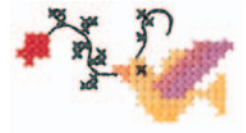
A B C D E F G H I J K L M N O P Q R S
T U V W X Y Z
a b c d e f g h i j k l m n o p q r s
t u v w x y z
0 1 2 3 4 5 6 7 8 9
& ? ! - _ () ' . , /
Ä Å Æ Æ Ñ Ö Ø Ç Ü
ä à â â æ ë è é ê ñ ö ò ø ì ç ü ù ß

ABC

A B C D E F G H I J K L M N O P Q R S
T U V W X Y Z
a b c d e f g h i j k l m n o p q r s
t u v w x y z
0 1 2 3 4 5 6 7 8 9
& ? ! - _ () ' . , /
Ä Å Æ Æ Ñ ö ø ç ü
ä à â â æ ë è é ê ñ ö ò ø ì ç ü ù ß

ABC

A B C D E F G H I J K L M N O P Q R S
T U V W X Y Z
a b c d e f g h i j k l m n o p q r s
t u v w x y z
0 1 2 3 4 5 6 7 8 9
& ? ! - _ () ' . , /
Ä Å Æ Æ Ñ ö ø ç ü
ä à â â æ ë è é ê ñ ö ò ø ì ç ü ù ß



ABC

A B C D E F G H I J K L M N O P Q R S
T U V W X Y Z
a b c d e f g h i j k l m n o p q r s
t u v w x y z
0 1 2 3 4 5 6 7 8 9
& ? ! - _ () ' . , /
Ä Å Æ Æ Ñ Ö Ø Ç Ü
ä å æ æ ñ ö ø ç ü ß

ABC

**A B C D E F G H I J K L M N O P Q R S
T U V W X Y Z
a b c d e f g h i j k l m n o p q r s
t u v w x y z
0 1 2 3 4 5 6 7 8 9
& ? ! - _ () ' . , /
Ä Å Æ Æ Ñ Ö Ø Ç Ü
ä å æ æ ñ ö ø ç ü ß**



Frame Patterns

框架花样

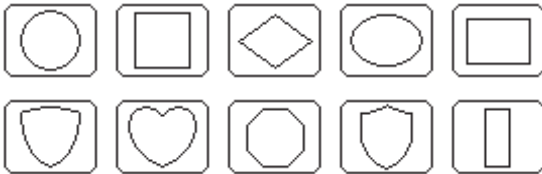
外框花樣

프레임 패턴



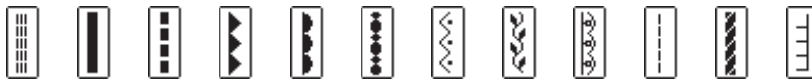
■ Frame shapes
■ 外框形狀

■ 框架形状
■ 프레임 모양



■ Stitches
■ 針趾

■ 针迹
■ 재봉 모양

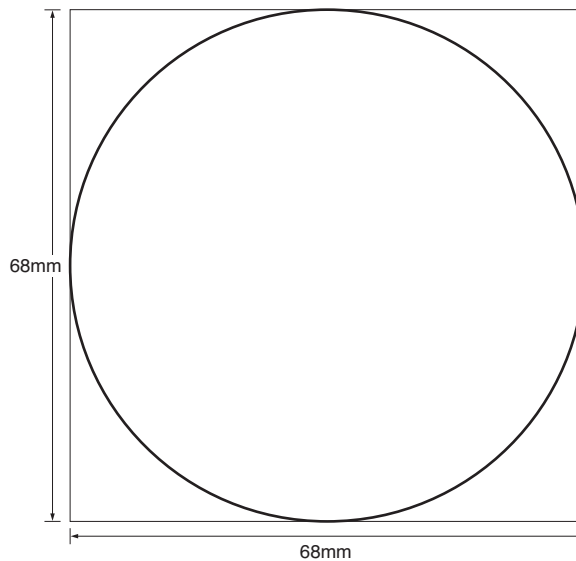


■ Sample at actual size
■ 實際大小的樣品

■ 真实尺寸样品
■ 실제 크기의 샘플

Sample combining  and  / 組合  和  的样品/

結合  和  的樣品/  및  을 조합한 샘플



Embroidery Pattern Color Change Table

绣花花样颜色变换表

刺繡花樣顏色變換表

패턴 실 색상표



No.1 25 min

Time required for embroidering
绣花所需时间
刺繡所需時間
자수 시 소요 시간

Order to embroider
绣花顺序
刺繡順序
자수 순서

Embroidery thread color number
绣花颜色线编号
刺繡線顏色編號
자수 실 색상 번호

Embroidery size
绣花尺寸
繡花大小
자수 사이즈

Embroidery thread color
绣花线颜色
刺繡線顏色
자수 실 색상

1	(255)
2	(463)
3	(444)
4	(155)
5	(024)
6	(224)
7	(334)
8	(485)

↓10.0cm ↔10.0cm

COUNTRY



No.7 5 min

1	(476)
2	(126)
3	(024)
4	(122)

↓8.1cm ↔1.6cm

COUNTRY

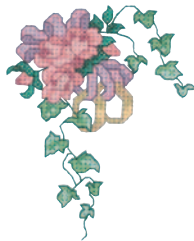


No.2 10 min

1	(334)
2	(322)
3	(335)
4	(336)
5	(473)
6	(354)
7	(485)
8	(148)
9	(255)

↓4.8cm ↔9.4cm

COUNTRY



No.5 21 min

1	(126)
2	(155)
3	(152)
4	(122)
5	(625)
6	(624)
7	(623)
8	(476)
9	(485)
10	(463)
11	(461)
12	(446)
13	(444)
14	(354)
15	(404)
16	(370)
17	(126)
18	(636)
19	(224)
20	(476)

↓9.4cm ↔7.6cm

COUNTRY



No.8 23 min

1	(017)
2	(019)
3	(070)
4	(810)
5	(001)
6	(019)
7	(070)

↓9.4cm ↔9.4cm

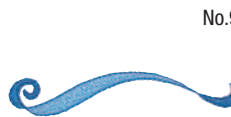


No.3 3 min

1	(149)
2	(370)
3	(334)
4	(133)
5	(624)
6	(322)
7	(717)
8	(485)

↓2.8cm ↔5.4cm

COUNTRY



No.9 3 min

1	(019)
2	(017)
3	(070)

↓1.6cm ↔9.0cm



No.4 5 min

1	(024)
2	(152)
3	(444)
4	(473)
5	(623)

↓5.3cm ↔4.0cm

COUNTRY



No.6 6 min

1	(588)
2	(000)
3	(126)
4	(024)
5	(255)
6	(354)
7	(586)

↓3.4cm ↔8.1cm

COUNTRY



No.11 21 min

1	(513)
2	(534)
3	(612)
4	(620)
5	(070)
6	(010)


↓9.6cm ↔8.6cm



Embroidery Pattern Color Change Table

绣花花样颜色变换表
 刺繡花樣顏色變換表
 패턴 실 색상표


No.12 17 min



1	■	(502)
2	■	(612)
3	■	(070)
4	■	(010)
5	■	(007)

↕7.4cm ↔ 7.4cm


No.17 6 min



1	■	(070)
2	■	(079)

↕6.9cm ↔ 6.3cm


No.23 1 min



1	■	(612)
---	---	-------

↕4.7cm ↔ 8.5cm


No.13 9 min



1	■	(502)
2	■	(010)
3	■	(208)

↕7.3cm ↔ 6.0cm


No.18 2 min



1	■	(124)
---	---	-------

↕2.7cm ↔ 3.0cm


No.24 1 min



1	■	(612)
---	---	-------

↕5.8cm ↔ 9.4cm

No.14 20 min



1	■	(502)
2	■	(010)
3	■	(208)
4	■	(810)
5	■	(086)
6	■	(017)
7	■	(085)
8	■	(328)

↕9.6cm ↔ 6.7cm


No.19 9 min



1	■	(017)
---	---	-------

↕5.9cm ↔ 8.3cm


No.25 3 min



1	■	(019)
2	■	(807)

↕4.9cm ↔ 6.2cm


No.15 4 min



1	■	(534)
2	■	(800)
3	■	(307)
4	■	(030)


↕2.7cm ↔ 4.1cm

No.20 8 min

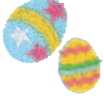


1	■	(126)
---	---	-------

↕9.2cm ↔ 8.5cm

COUNTRY 


No.26 5 min



1	■	(017)
2	■	(205)
3	■	(513)
4	■	(086)
5	■	(001)
6	■	(017)

↕3.2cm ↔ 3.4cm


No.16 10 min



1	■	(534)
2	■	(800)
3	■	(070)
4	■	(307)
5	■	(019)
6	■	(030)


↕8.9cm ↔ 9.0cm

No.21 6 min




1	■	(126)
---	---	-------

↕7.8cm ↔ 9.3cm

COUNTRY 


No.27 4 min



1	■	(807)
2	■	(515)
3	■	(001)
4	■	(070)

↕3.0cm ↔ 7.9cm


No.22 2 min



1	■	(612)
---	---	-------

↕9.6cm ↔ 9.4cm


No.28 10 min



1	■	(208)
2	■	(205)
3	■	(900)
4	■	(620)
5	■	(001)
6	■	(515)

↕5.0cm ↔ 4.1cm


No.29 4 min



1	■	(337)
2	■	(030)
3	■	(058)

↕2.5cm ↔ 2.5cm

No.30




11 min

1	(800)
2	(007)
3	(307)
4	(399)
5	(900)
6	(017)
7	(001)
8	(800)

↓5.6cm ↔9.0cm

No.31




5 min

1	(800)
2	(515)
3	(017)
4	(124)
5	(206)

↓3.7cm ↔3.6cm


No.32




9 min

1	(586)
2	(025)
3	(473)
4	(242)
5	(224)
6	(255)
7	(747)

↓5.0cm ↔5.0cm

COUNTRY 

No.33




20 min

1	(513)
2	(001)
3	(323)
4	(800)
5	(017)
6	(810)
7	(900)
8	(513)
9	(001)
10	(323)
11	(019)
12	(070)
13	(900)
14	(058)
15	(502)
16	(704)
17	(900)

↓9.6cm ↔6.5cm

No.34




3 min

1	(001)
2	(307)
3	(707)

↓2.6cm ↔2.4cm

No.35




5 min

1	(001)
2	(323)
3	(010)
4	(900)

↓3.4cm ↔3.8cm

No.36




5 min

1	(001)
2	(843)
3	(707)
4	(900)

↓4.0cm ↔2.7cm

No.37




3 min

1	(001)
2	(405)
3	(017)
4	(800)

↓3.2cm ↔3.3cm

No.38




1 min

1	(800)
2	(017)
3	(339)

↓1.6cm ↔2.5cm

No.39




3 min

1	(704)
---	-------

↓2.3cm ↔3.0cm

★ No.40




3 min

1	(107)
2	(107)
3	(107)
4	(328)

↓4.9cm ↔4.8cm

No.41




5 min

1	(800)
2	(205)
3	(001)
4	(507)
5	(900)

↓2.4cm ↔5.7cm

No.42




2 min

1	(205)
2	(405)
3	(507)
4	(800)
5	(900)

↓2.4cm ↔5.8cm

★ No.43




7 min

1	(019)
2	(019)
3	(019)
4	(205)
5	(507)
6	(007)
7	(900)

↓5.6cm ↔5.7cm

★ No.44



17 min

1	(800)
2	(800)
3	(800)
4	(019)
5	(800)
6	(513)
7	(124)
8	(085)
9	(086)


↓6.2cm ↔6.2cm

- ★ Refer to the operation manual for the embroidery machine for details on how to embroider appliqués.
- ★ 请参阅绣花机使用说明书了解如何贴布绣花的详情。
- ★ 有關如何刺繡貼布的詳細資訊，請參閱刺繡機的說明書。
- ★ 아플리케 자수를 놓는 방법에 대해서는 자수기의 사용설명서를 참조하십시오.


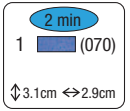



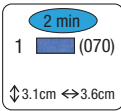
Embroidery Pattern Color Change Table


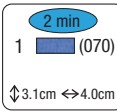
绣花花样颜色变换表
 刺繡花樣顏色變換表
 패턴 실 색상표


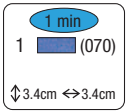
No.45  
 1 (070)
 ↓3.1cm ↔3.9cm

No.54  
 1 (070)
 ↓4.5cm ↔3.1cm


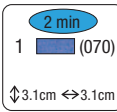
No.63  
 1 (070)
 ↓3.1cm ↔2.9cm


No.46  
 1 (070)
 ↓3.1cm ↔3.6cm

No.55  
 1 (070)
 ↓3.1cm ↔4.0cm

No.64  
 1 (070)
 ↓3.4cm ↔3.4cm


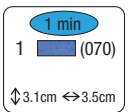
No.47  
 1 (070)
 ↓3.1cm ↔2.9cm

No.56  
 1 (070)
 ↓3.1cm ↔3.1cm


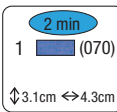
No.65  
 1 (070)
 ↓3.1cm ↔3.7cm


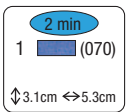
No.48  
 1 (070)
 ↓3.1cm ↔3.1cm

No.57  
 1 (070)
 ↓3.1cm ↔4.6cm

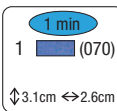
No.66  
 1 (070)
 ↓3.1cm ↔3.5cm


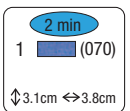
No.49  
 1 (070)
 ↓3.1cm ↔2.8cm

No.58  
 1 (070)
 ↓3.1cm ↔4.3cm


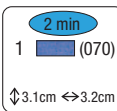
No.67  
 1 (070)
 ↓3.1cm ↔5.3cm


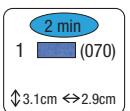
No.50  
 1 (070)
 ↓3.5cm ↔3.2cm


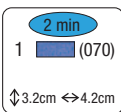
No.59  
 1 (070)
 ↓3.1cm ↔2.6cm


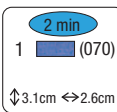
No.68  
 1 (070)
 ↓3.1cm ↔3.8cm


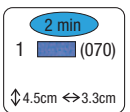
No.51  
 1 (070)
 ↓3.1cm ↔2.4cm


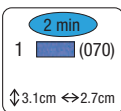
No.60  
 1 (070)
 ↓3.1cm ↔3.2cm


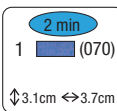
No.69  
 1 (070)
 ↓3.1cm ↔2.9cm

No.52  
 1 (070)
 ↓3.2cm ↔4.2cm

No.61  
 1 (070)
 ↓3.1cm ↔2.6cm

No.70  
 1 (070)
 ↓4.5cm ↔3.3cm

No.53  
 1 (070)
 ↓3.1cm ↔2.7cm

No.62  
 1 (070)
 ↓3.1cm ↔3.7cm

Color Thread Conversion Chart

绣花线对照表

彩線對照表

컬러 실 변환 차트



	Color Name	Embroidery	Country	Madeira Polyneon	Madeira Rayon	Sulky Rayon	R.A. Polyester
1	Black / 黑色 / 黒 / 검정색	900	100	1800	1000	1005	5596
2	White / 白色 / 白 / 흰색	001	000	1801	1002	1001	5597
3	Red / 红色 / 紅 / 빨강색	800	149	1637	1037	1037	5678
4	Pink / 粉红色 / 粉 / 핑크색	085	155	1921	1108	1224	5523
5	Deep Rose / 深玫红 / 深玫瑰 / 담홍색	086	024	1721	1117	1154	9168
6	Flesh Pink / 肉粉色 / 淡粉 / 연핑크	124	152	1915	1015	1064	5677
7	Dark Fuchsia / 深紫红 / 深桃红 / 어두운 핑크	107	126	1984	1383	1533	5804
8	Vermillion / 朱红色 / 朱紅 / 주홍색	030	148	1779	1179	1184	9023
9	Carmine / 洋红色 / 胭脂红 / 진홍색	807	158	1986	1081	1511	5561
10	Royal Purple / 蓝紫色 / 皇家紫 / 청자주	869	636	1788	1188	1192	5681
11	Magenta / 品红 / 紅紫 / 자홍색	620	625	1710	1319	1191	5592
12	Salmon Pink / 橙红色 / 橙紅 / 밝은 주황	079	122	1816	1317	1225	5773
13	Amber Red / 琥珀红 / 琥珀紅 / 짙은 적갈색	333	212	1942	1341	1119	5591
14	Lemon Yellow / 柠檬黄 / 檸檬黃 / 레몬색	202	342	1623	1023	1067	5625
15	Yellow / 黄色 / 黃 / 노란색	205	043	1980	1068	1187	5860
16	Harvest Gold / 金黄色 / 金 / 황금색	206	334	1971	1024	1124	5770
17	Orange / 橙色 / 橘 / 주황색	208	335	1951	1137	1024	5694
18	Pumpkin / 南瓜色 / 南瓜色 / 호박색	126	322	1952	1155	1065	5630
19	Tangerine / 橘子色 / 蜜桔橘 / 다홍색	209	336	1965	1078	1078	5518
20	Cream Brown / 乳褐色 / 奶油棕 / 담황색	010	331	1866	1022	1061	5761
21	Cream Yellow / 乳黄色 / 奶油黃 / 연노랑	812	370	1861	1349	1135	5564
22	Khaki / 卡其色 / 卡其色 / 카키색	348	242	1939	1255	1055	5636
23	Deep Gold / 深黄色 / 深金 / 황토색	214	354	1772	1172	1025	5770
24	Brass / 黄铜色 / 黃銅色 / 황동색	328	404	1791	1192	1159	9109
25	Linen / 亚麻色 / 亞麻色 / 샨색	307	025	1682	1149	1082	5635
26	Dark Brown / 深褐色 / 深棕 / 암갈색	058	717	1859	1130	1129	5637
27	Reddish Brown / 红褐色 / 紅棕 / 적갈색	337	264	1753	1253	1021	5781
28	Clay Brown / 土棕褐色 / 土棕褐 / 흙갈색	339	224	1621	1021	1158	5590
29	Beige / 米黄色 / 米色 / 베이지색	843	012	1738	1138	1127	5598
30	Warm Gray / 暖灰色 / 暖灰 / 연회색	399	706	1860	1085	1218	9126
31	Russet Brown / 赤褐色 / 黃褐棕 / 황갈색	330	414	1726	1194	1126	5702
32	Light Brown / 浅棕色 / 淺棕 / 연갈색	323	255	1729	1056	1128	5789
33	Seacrest / 蓝绿色 / 靑瓷色 / 청자색	542	505	1647	1219	1077	5578
34	Mint Green / 薄荷绿 / 薄荷綠 / 민트 그린	502	461	1702	1302	1047	5511
35	Leaf Green / 叶绿色 / 黃 / 연녹색	509	463	1749	1050	1510	5514
36	Olive Green / 橄榄绿 / 橄欖綠 / 올리브 그린	519	476	1904	1396	1174	5502
37	Dark Olive / 深橄榄色 / 暗橄欖綠 / 암녹색	517	473	1769	1156	1156	9122
38	Teal Green / 青绿色 / 深靑綠 / 청녹색	534	483	1879	1298	1503	5751
39	Emerald Green / 翡翠绿 / 鮮綠 / 선녹색	507	485	1750	1250	1079	5508
40	Deep Green / 深绿色 / 深綠 / 진녹색	808	467	1703	1370	1208	5615

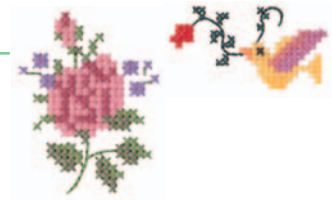


Color Thread Conversion Chart

绣花线对照表

彩線對照表

컬러 실 변환 차트



	Color Name	Embroidery	Country	Madeira Polyneon	Madeira Rayon	Sulky Rayon	R.A. Polyester
41	Fresh Green / 嫩绿色 / 青綠 / 연두색	027	442	1706	1102	1209	9153
42	Lime Green / 亮绿色 / 萊姆綠 / 황녹색	513	444	1848	1049	1177	5622
43	Moss Green / 苔绿色 / 苔蘚綠 / 초록색	515	446	1770	1369	1176	9091
44	Blue / 蓝色 / 藍 / 파랑색	405	586	1829	1177	1076	5684
45	Ultra Marine / 深蓝色 / 群青色 / 군청색	406	575	1842	1076	1042	5736
46	Light Blue / 浅蓝色 / 淡藍 / 밝은 파랑	017	150	1932	1132	1074	5683
47	Sky Blue / 天蓝色 / 天藍 / 하늘색	019	512	1828	1029	1196	5506
48	Electric Blue / 铁蓝色 / 鋼青色 / 감청색	420	564	1797	1297	1250	5829
49	Peacock Blue / 孔雀蓝 / 孔雀藍 / 남색	415	057	1652	1252	1206	5810
50	Prussian Blue / 普鲁士蓝 / 普魯士藍 / 감청색	007	588	1767	1166	1535	5737
51	Cornflower Blue / 矢车菊蓝 / 矢車菊藍 / 청보라색	070	015	1830	1335	1028	5601
52	Light Lilac / 浅紫色 / 淺紫 / 연보라색	810	133	1911	1031	1121	9016
53	Lilac / 淡紫色 / 雪青 / 엷은 자색	612	623	1831	1080	1080	9009
54	Violet / 紫罗兰 / 紫羅蘭色 / 보라색	613	624	1631	1033	1194	5588
55	Purple / 紫色 / 紫 / 자주색	614	635	1880	1122	1122	5554
56	Lavender / 薰衣草淡紫 / 薰衣草紫 / 연자주색	804	604	1630	1261	1193	5586
57	Wisteria Violet / 紫藤紫 / 紫藤紫 / 청보라	607	003	1943	1311	1032	5587
58	Pewter / 青灰色 / 沙電色 / 회색	704	745	1840	1041	1041	9114
59	Dark Gray / 深灰色 / 深灰 / 암회색	707	747	1841	1241	1220	5565
60	Silver / 银色 / 銀 / 은색	005	020	1812	1087	1011	5640
61	Gray / 灰色 / 灰 / 회색	817	734	1640	1118	1219	5782
62	----->X						
63	-----						
64	~~~~~						
65	NOT DEFINED / 未定义 / 未定義 / 정의되지 않음						

Note: The conversion chart is based on Embroidery thread. The color shades may vary with the different brands listed on the chart. If unsure of a particular color(s), please sew test. Robison Anton (R.A.), Isacord, Madeira, Sulky and Gütermann are respectively registered trademarks. Actual colors may vary slightly from the chart.

备注: 本转换表以绣花线为基准。根据表中所列的品牌不同，可能会有色差。如果对于某个特定颜色不确定时，请先进行试绣。Robison Anton (R.A.), Isacord, Madeira, Sulky与Gütermann分别为注册商标。实际的颜色可能会与表中所示的颜色略有不同。

注意: 本对照表是根据刺繡線而定。顏色可能會與表中所列的不同品牌而有不同。若不確定特定顏色，請進行縫紉測試。Robison Anton (R.A.)、Isacord、Madeira、Sulky 和 Gütermann 各自為註冊商標。實際顏色與對照表可能稍有不同。

참고: 변환 차트는 자수 실을 기준으로 합니다. 색조는 차트에 나열된 브랜드에 따라 다를 수 있습니다. 특정 색상을 알 수 없는 경우에는 시험 재봉을 해 보십시오. Robison Anton (R.A.), Isacord, Madeira, Sulky 및 Gütermann은 각각 등록 상표입니다. 실제 색상은 차트와 약간 다를 수 있습니다.

English
Chinese-simp
Chinese-trad
Korean

885-V55
XF0278-001
Printed in China