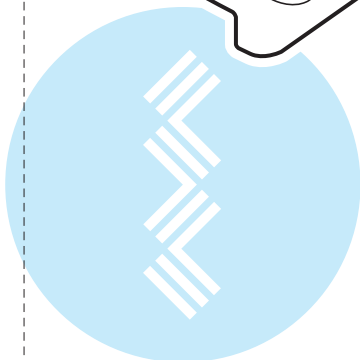
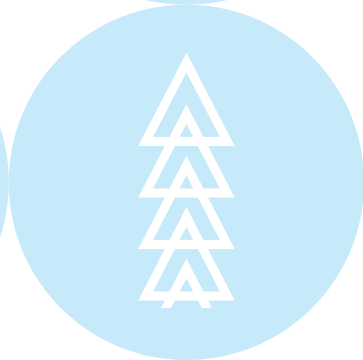
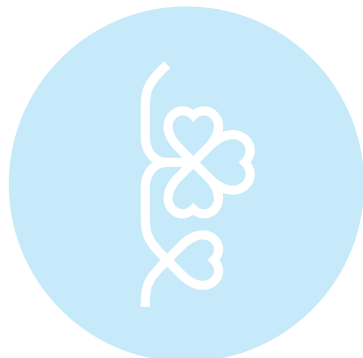
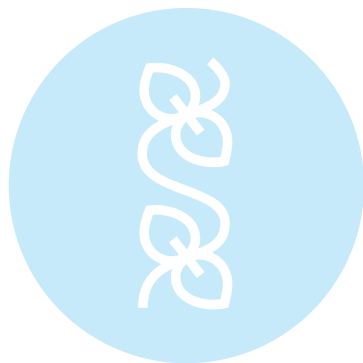


Quick Reference Guide

빠른 설정 가이드



Refer to the operation manual for detailed instruction.

자세한 설명은 사용 설명서를 참조하십시오.



Bobbin winding and setting

☞ 2

밑실감기 및 설정



Upper threading

☞ 4

윗실 끼우기



Selecting stitch patterns

☞ 6

재봉 패턴 선택하기



Adjusting the stitch width and length

☞ 7

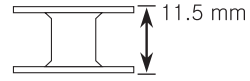
땀 폭 땀 길이 조절하기

Bobbin winding and setting

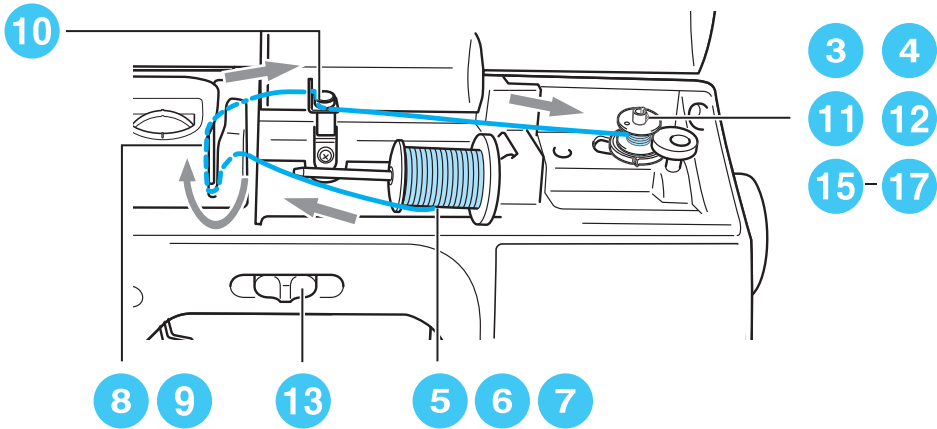
밑실감기 및 설정



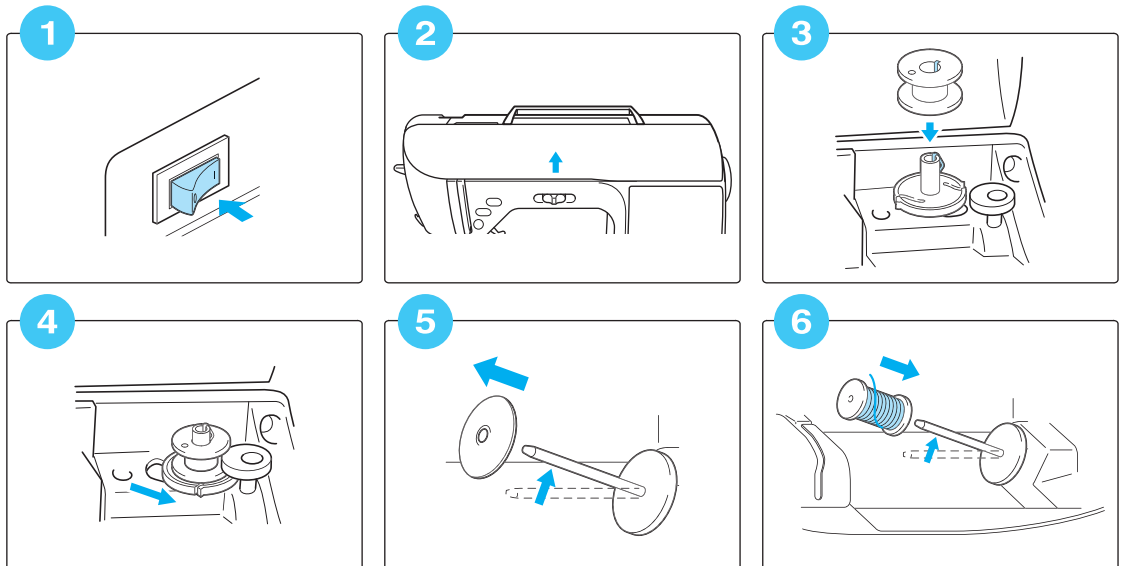
포함된 실토리 또는 동일한 타잎의 실토리만 사용하십시오.

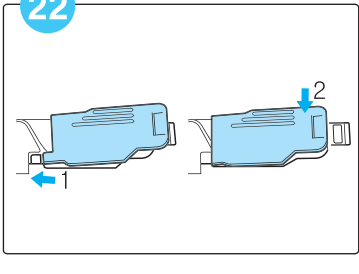
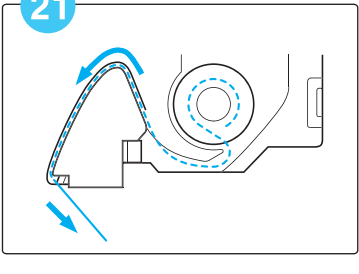
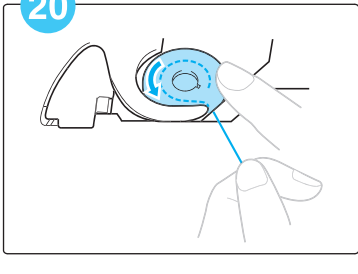
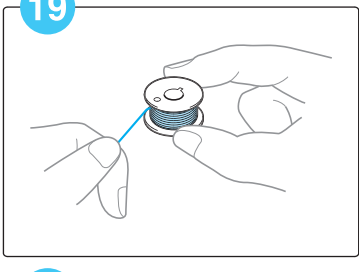
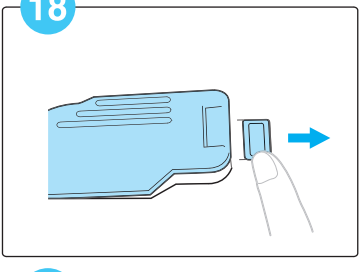
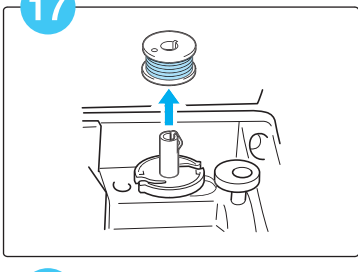
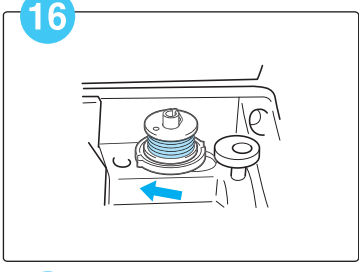
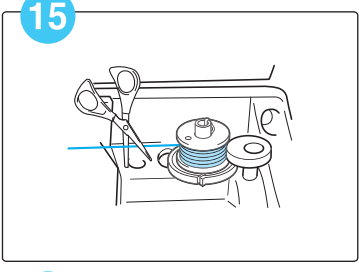
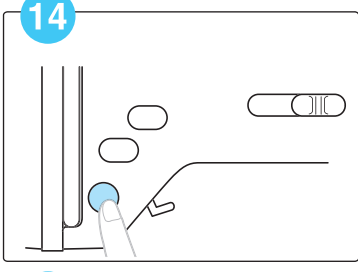
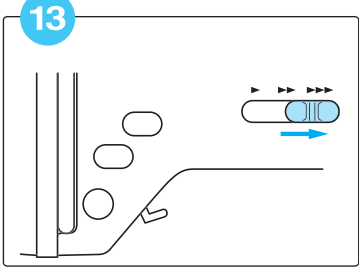
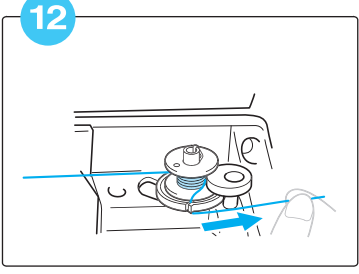
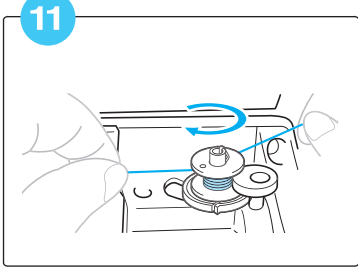
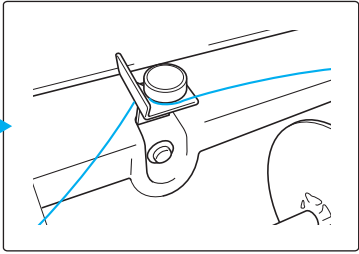
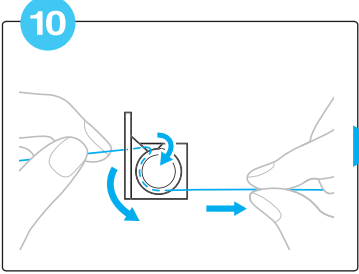
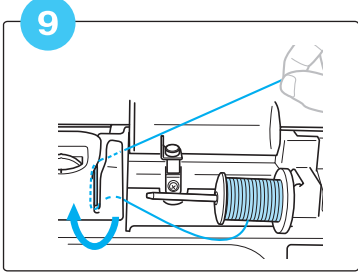
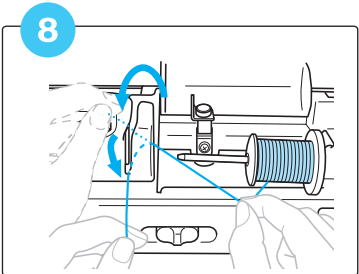
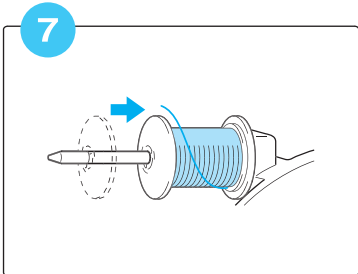
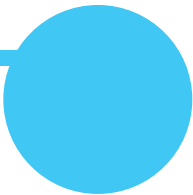


사용 실토리



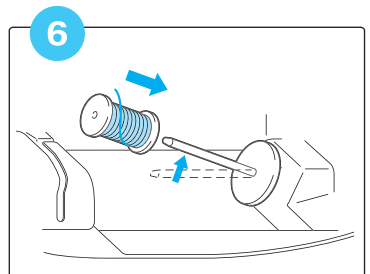
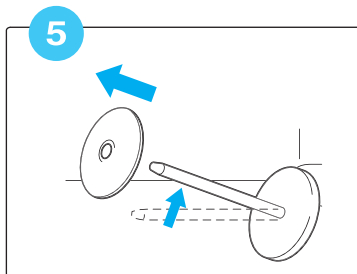
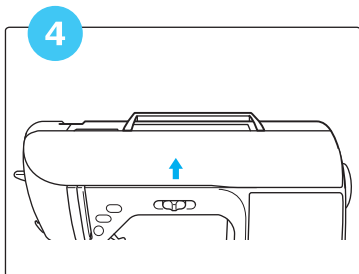
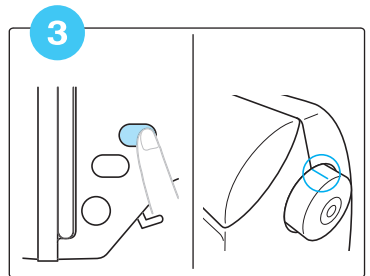
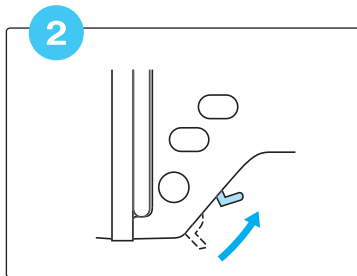
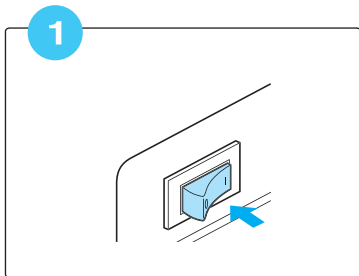
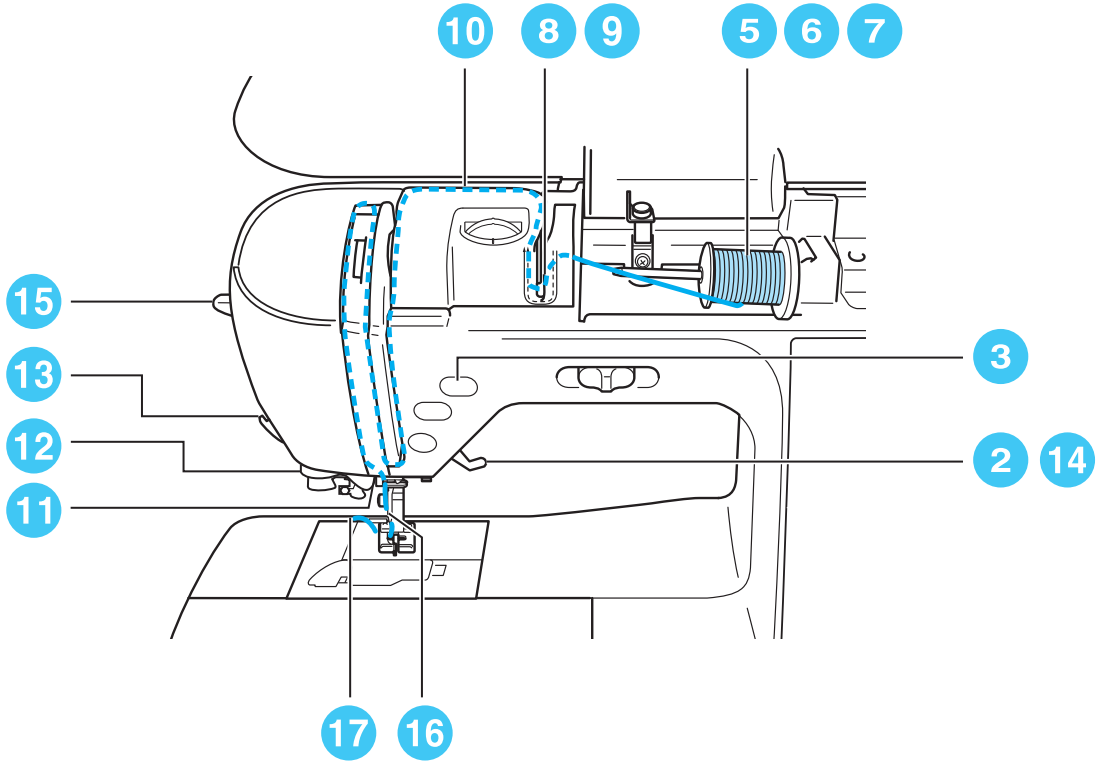
표시된 숫자의 순서대로 실을 걸어 주십시오. 자세한 내용은 사용 설명서를 참조 하십시오.

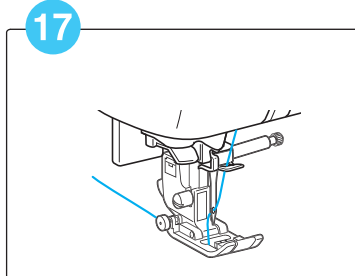
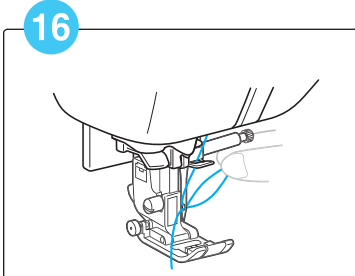
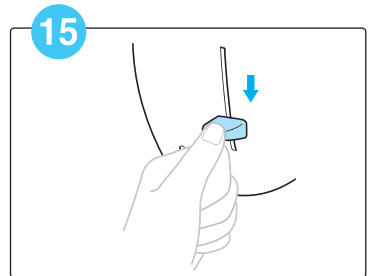
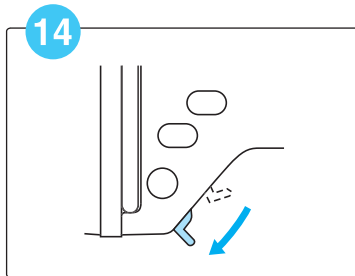
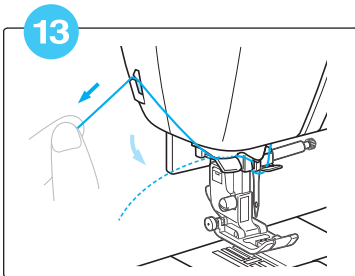
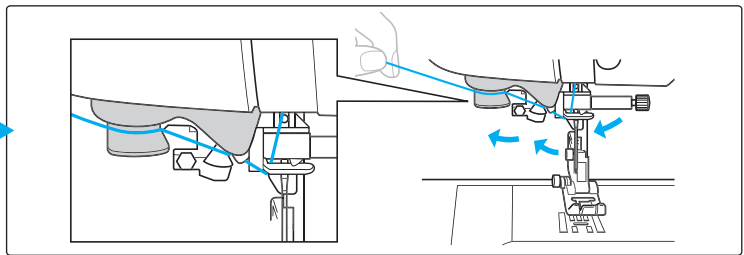
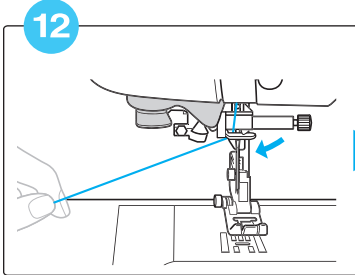
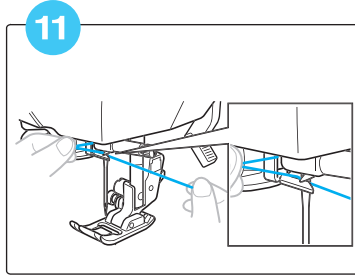
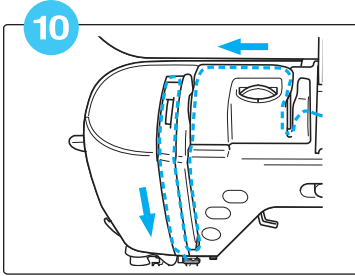
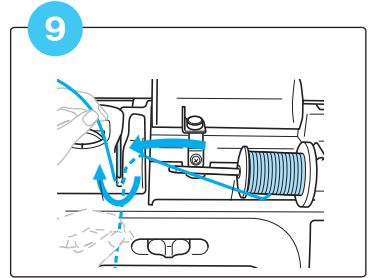
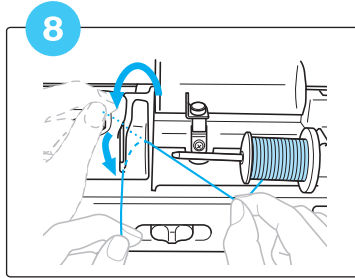
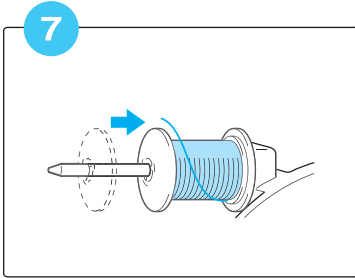
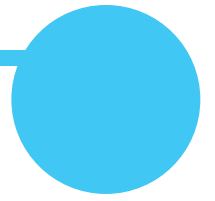




Upper threading

윗실 끼우기

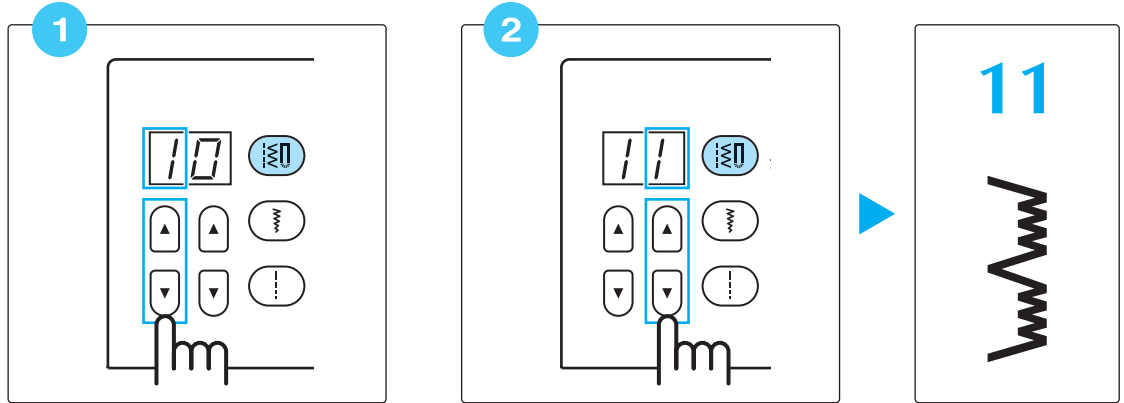






Selecting stitch patterns

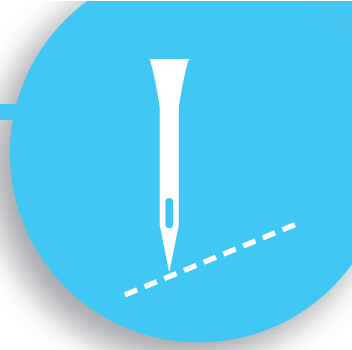
재봉 패턴 선택하기



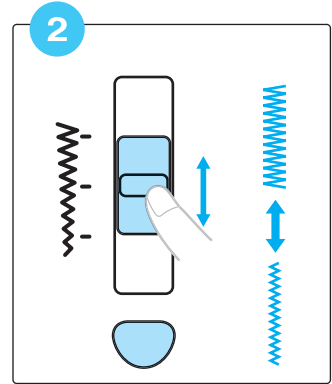
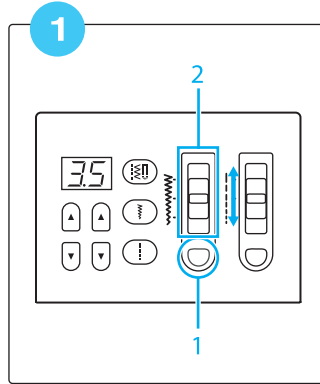
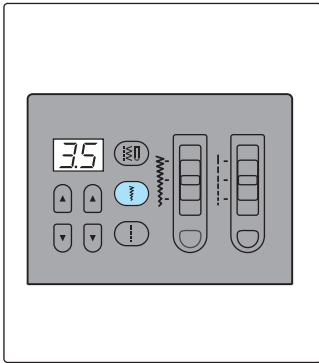
	00	0	1	2	3	4	5	6	7	8	9
0	00	01	02	03	04	05	06	07	08	09	
1	10	11	12	13	14	15	16	17	18	19	
2	20	21	22	23	24	25	26	27	28	29	
3	30	31	32	33	34	35	36	37	38	39	
4	40	41	42	43	44	45	46	47	48	49	
5	50	51	52	53	54	55	56	57	58	59	
6	60	61	62	63	64	65	66	67	68	69	
7	70	71	72	73	74	75	76	77	78	79	

Adjusting the stitch width and length

땀 폭 땀 길이 조절하기



땀 폭 조절하기



땀 길이 조절하기

