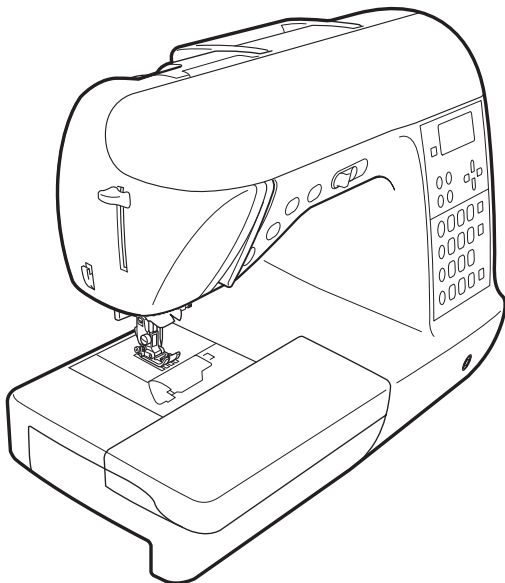


# Quick Reference Guide

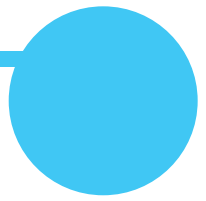
빠른 설정 가이드



Refer to the operation manual for detailed instruction.

자세한 설명은 사용 설명서를 참조하십시오.

# Contents



Bobbin winding and setting

☞ 2

밑실감기 및 설정



Upper threading

☞ 4

윗실 끼우기



Selecting stitch patterns

☞ 6

재봉 패턴 선택하기



Combining and saving patterns

☞ 10

결합과 패턴의 저장



Saved patterns' memo

☞ 11

저장된 패턴의 메모



Summary of stitch patterns

☞ 12

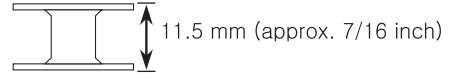
재봉 패턴 요약

# Bobbin winding and setting

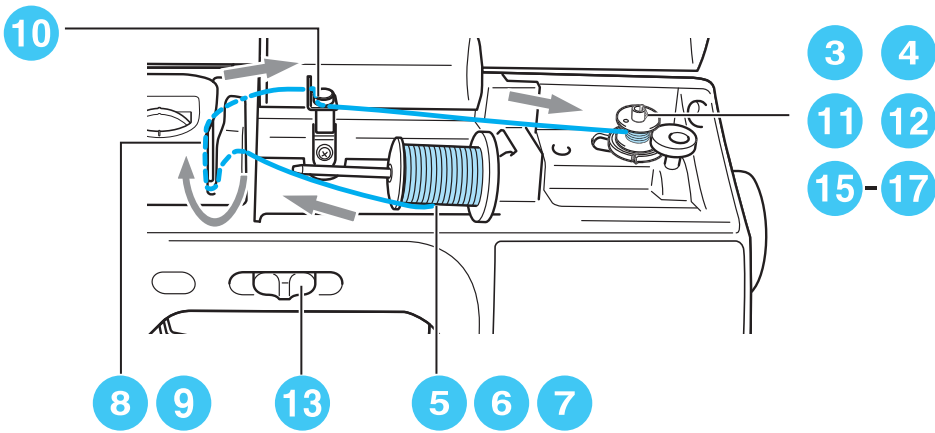
## 밑실감기 및 설정



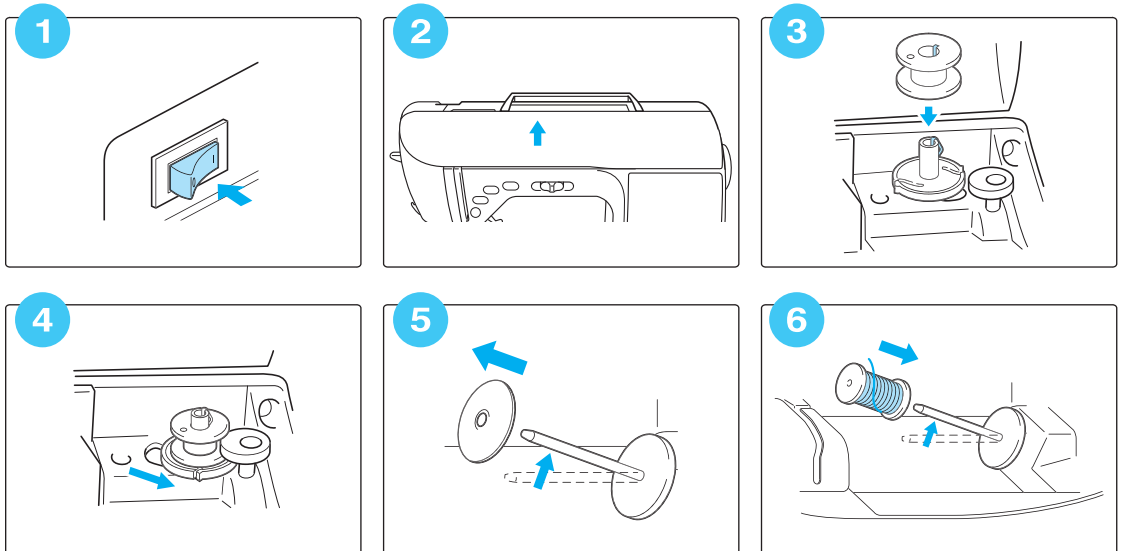
포함된 실토리 또는 동일한 타잎의 실토리만 사용하십시오.

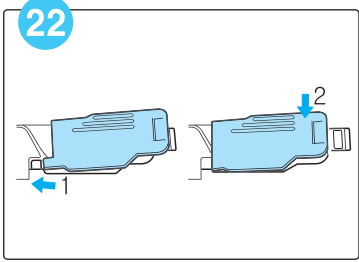
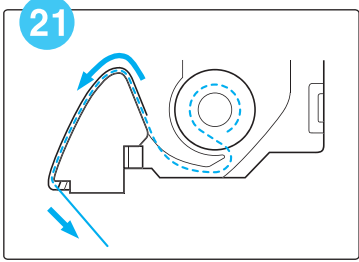
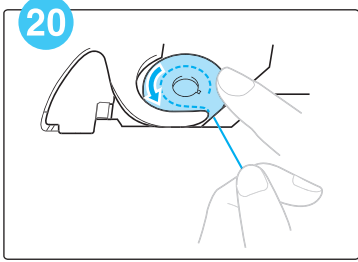
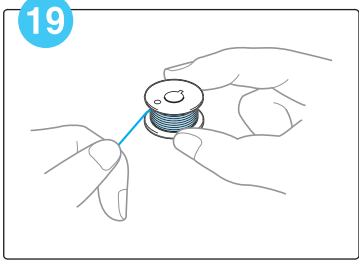
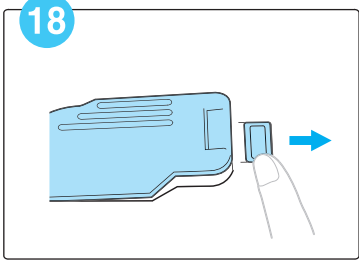
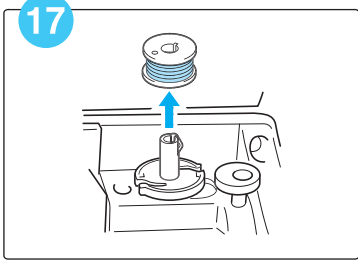
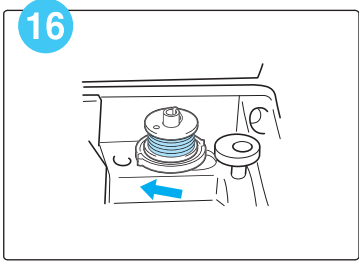
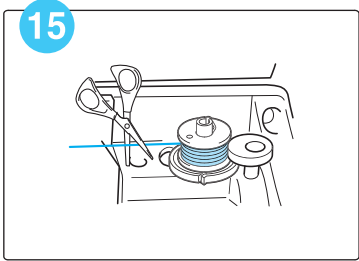
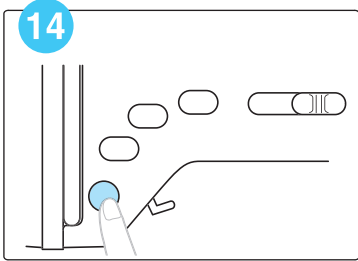
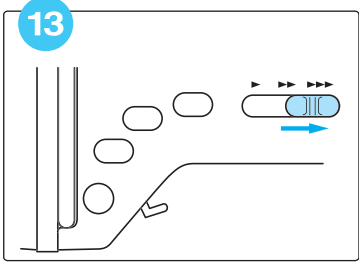
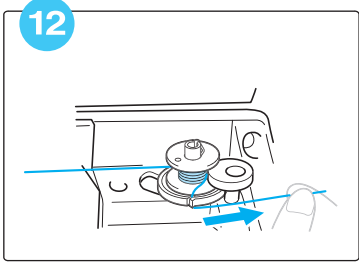
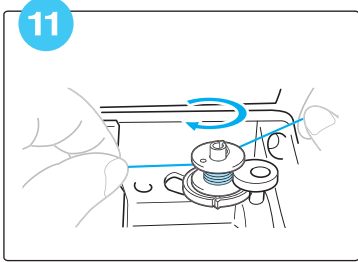
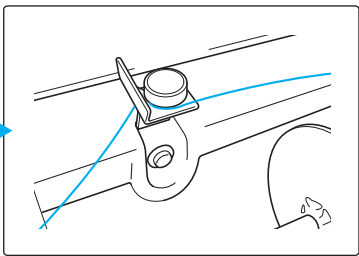
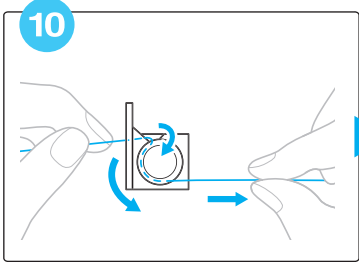
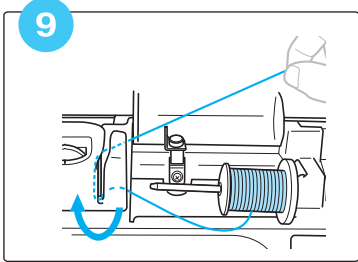
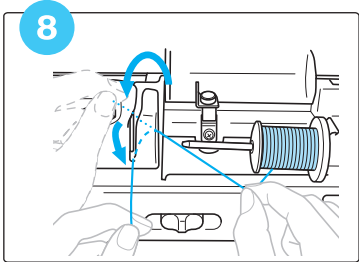
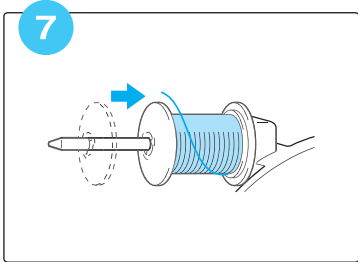
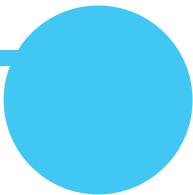


사용 실토리



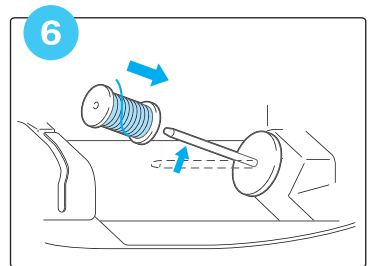
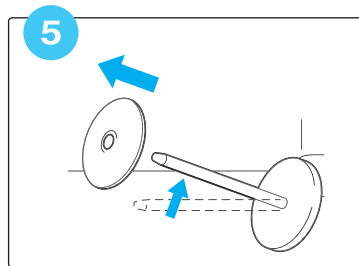
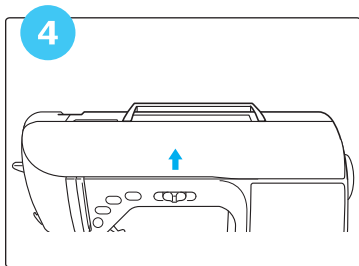
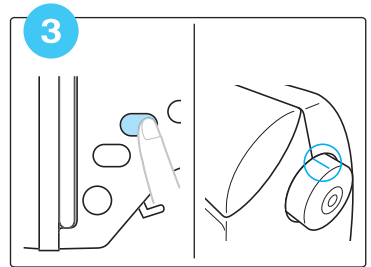
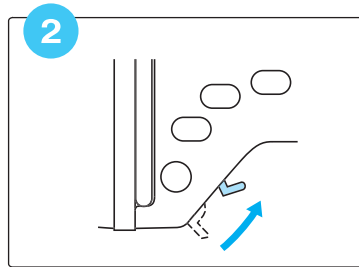
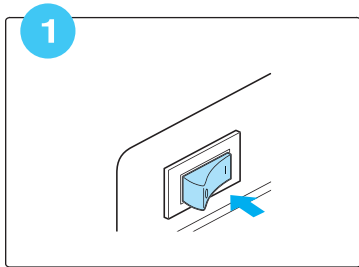
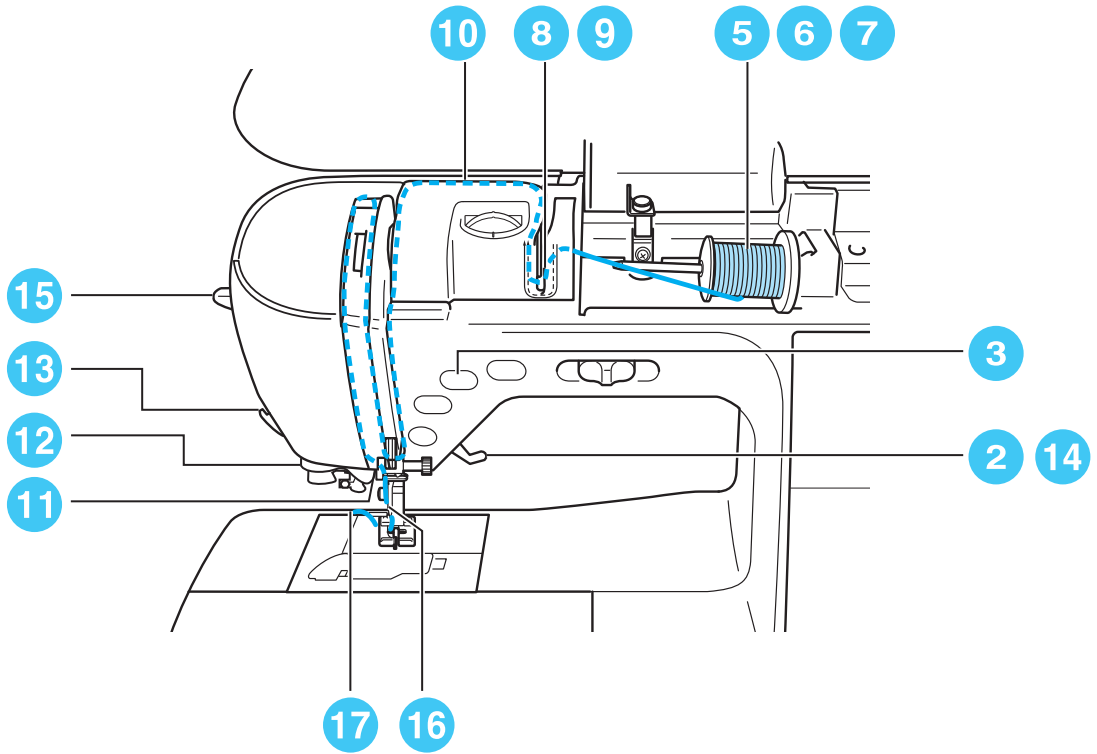
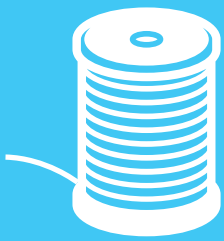
표시된 숫자의 순서대로 실을 걸어 주십시오. 자세한 내용은 사용 설명서를 참조 하십시오.

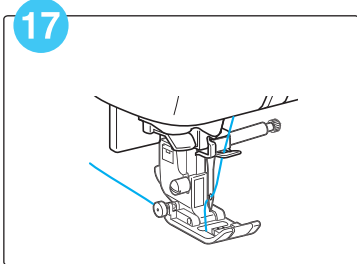
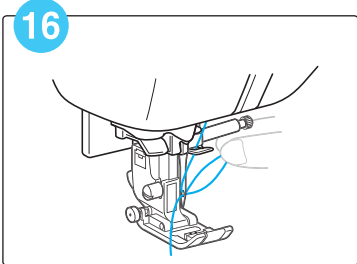
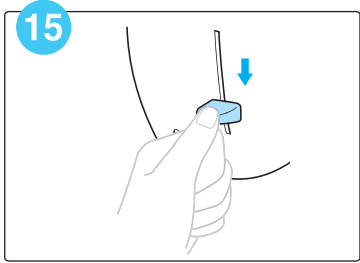
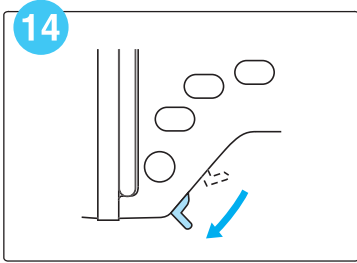
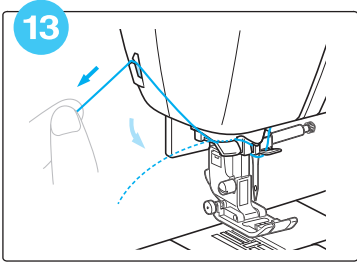
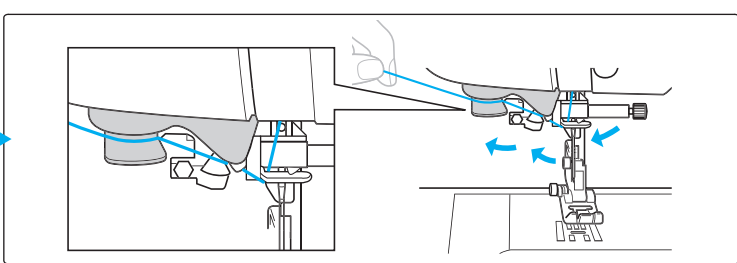
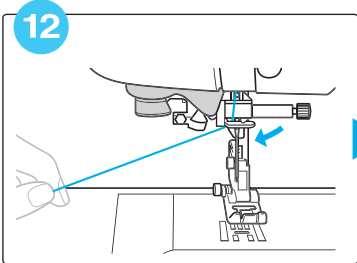
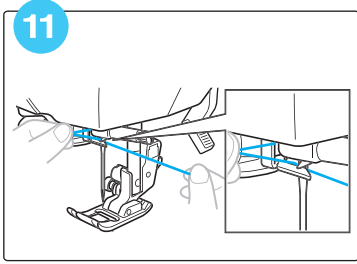
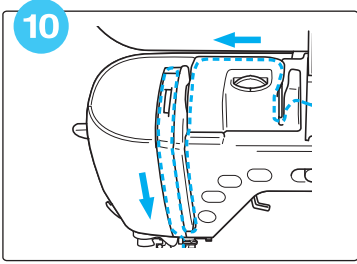
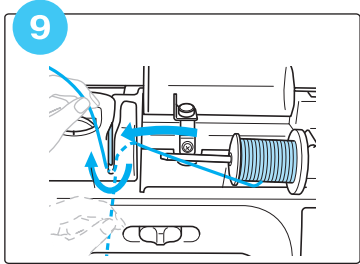
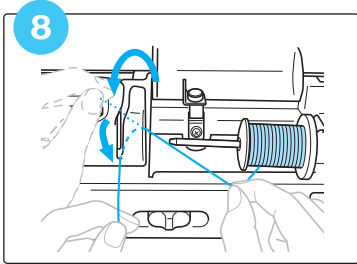
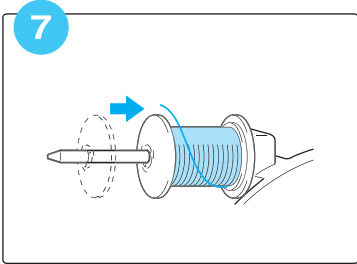
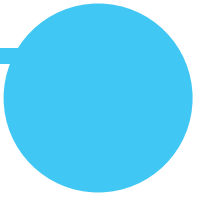




# Upper threading

## 윗실 끼우기



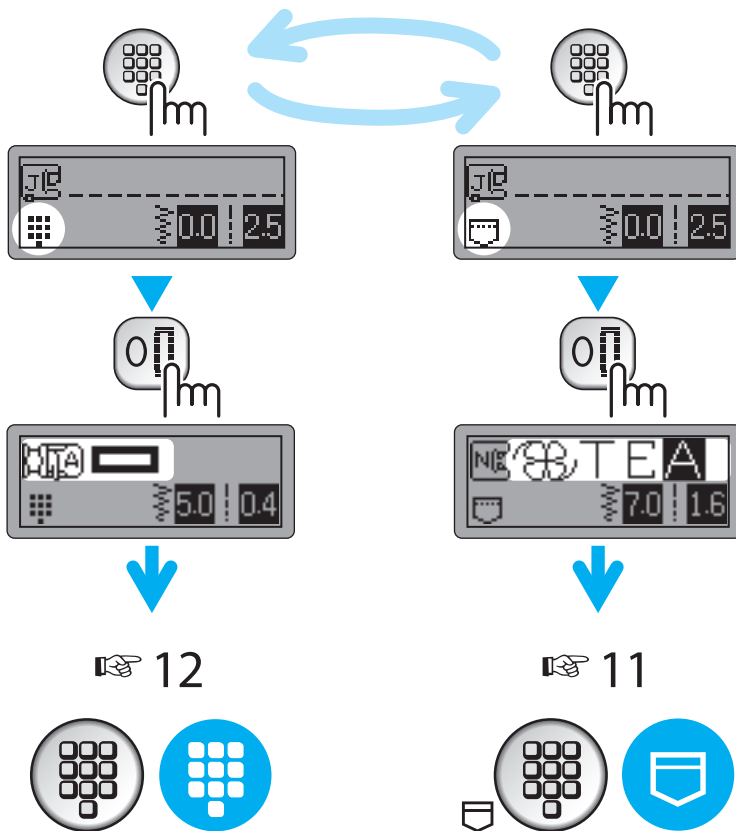


# Selecting stitch patterns

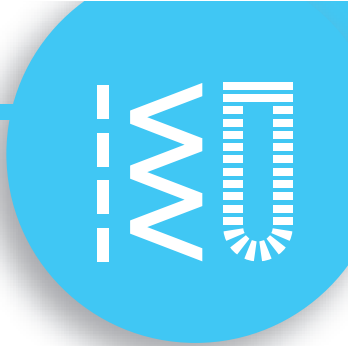
## 재봉 패턴 선택하기

Preset utility stitch/  
saved pattern

유용한 재봉 설정/  
패턴 저장

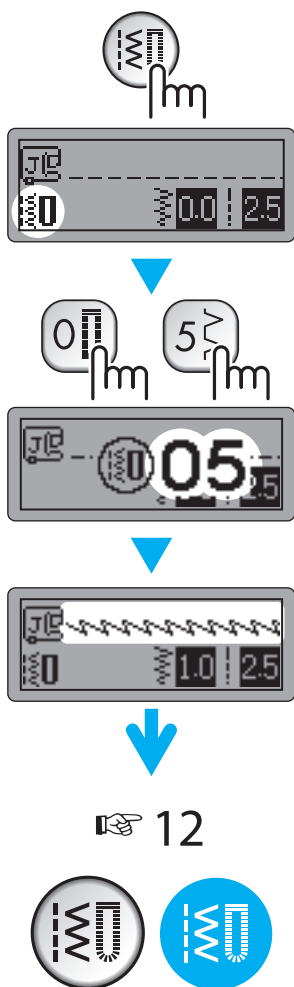
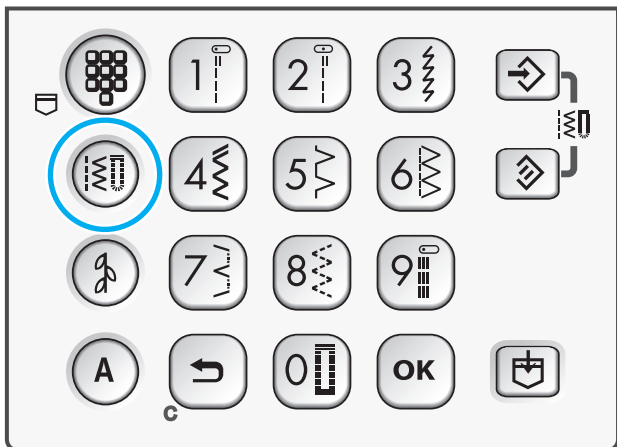






# Utility stitches

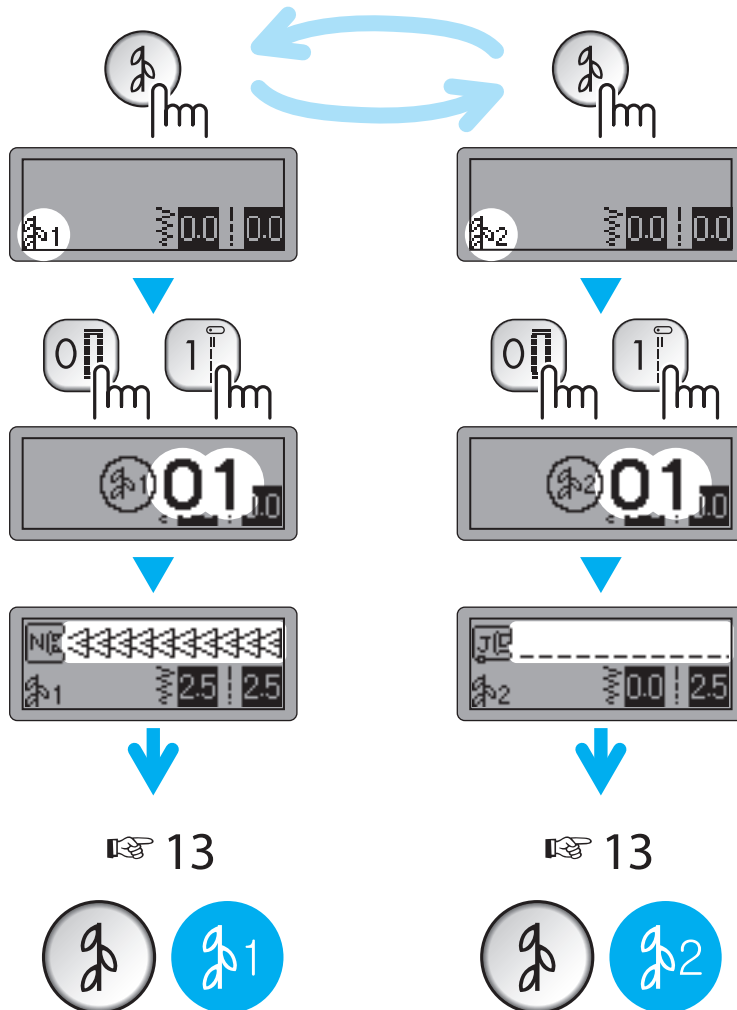
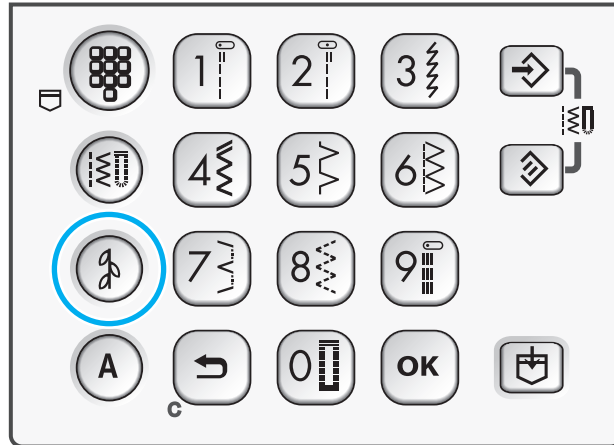
유용한 재봉





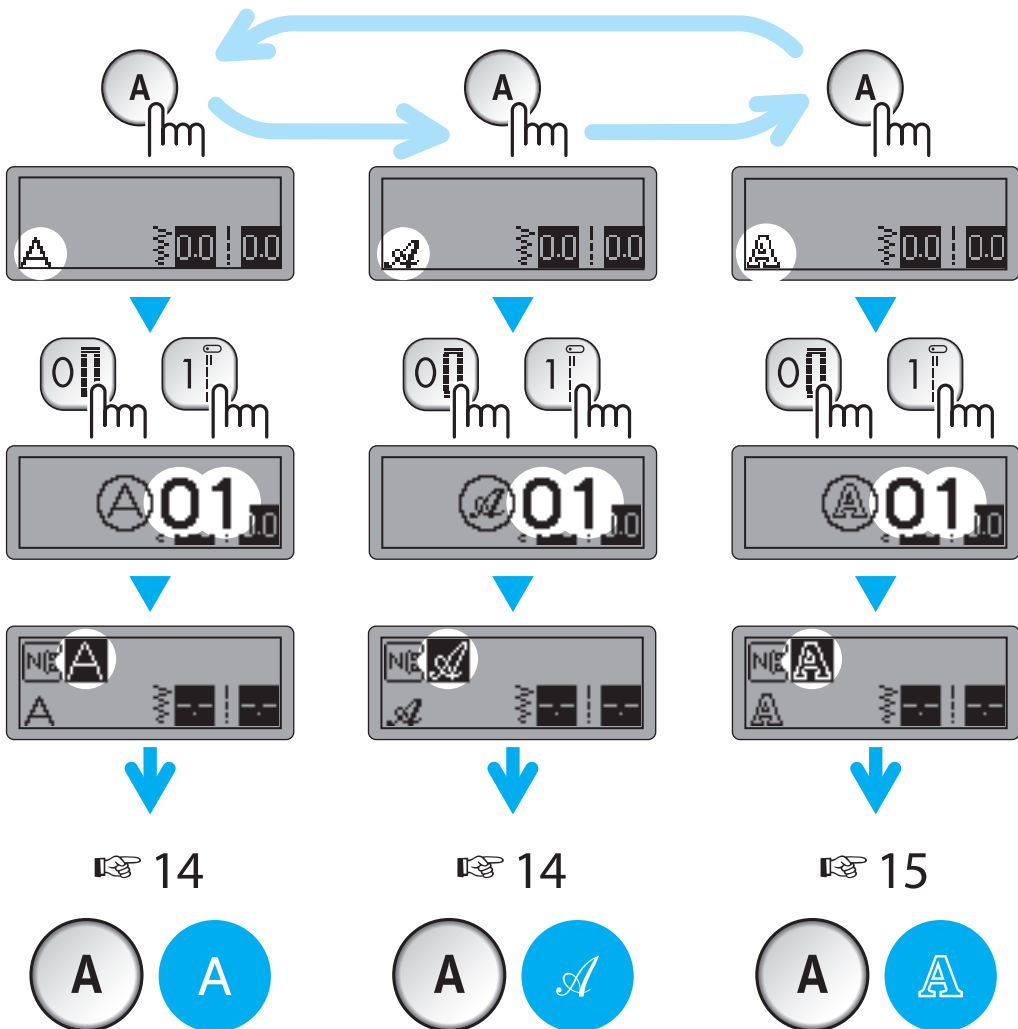
Decorative stitches

장식 재봉



# A

Character stitches  
캐릭터 재봉



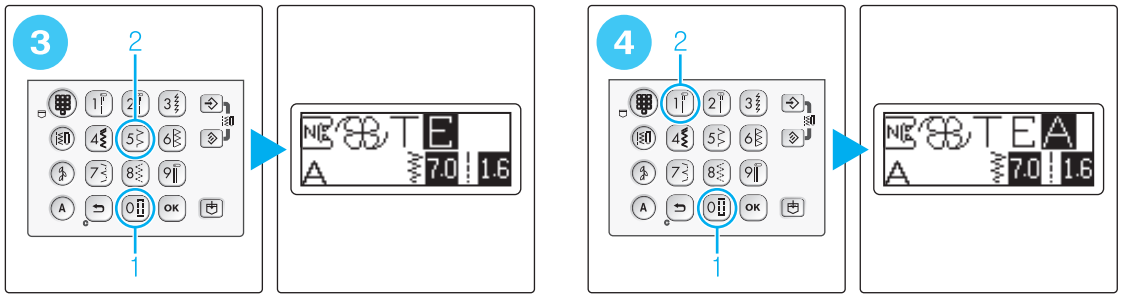
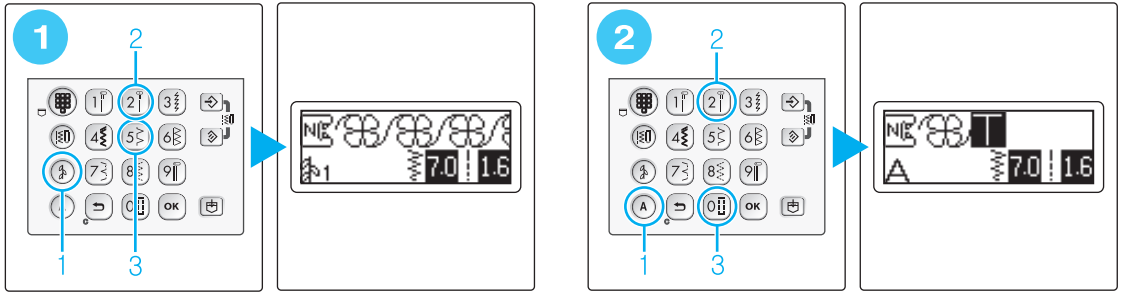
# Combining and saving patterns

## 결합과 패턴의 저장

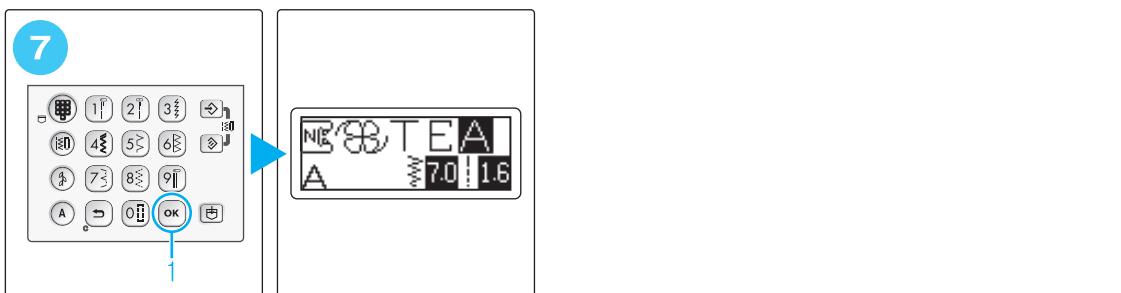
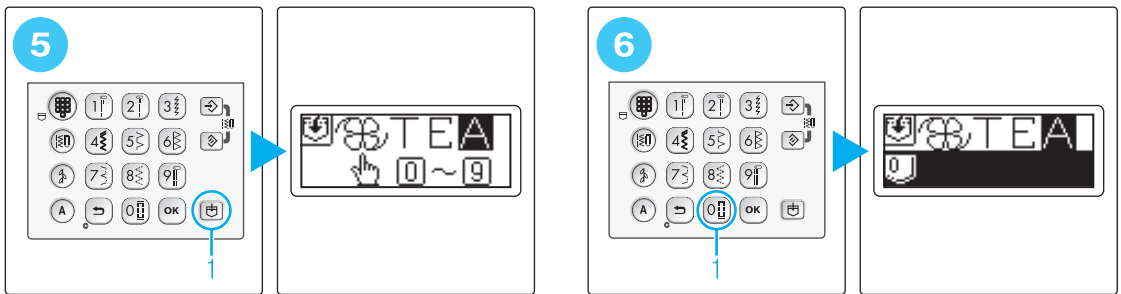
예제 :

☸ TEA

### Combining patterns 패턴의 연결



### Saving patterns 패턴의 저장



# Saved patterns' memo

## 저장된 패턴의 메모



Saved patterns  
저장된 패턴

1	
2	
3	
4	
5	
6	
7	
8	
9	
0	

# Summary of stitch patterns

## 재봉 패턴 요약



### Preset utility stitch

유용한 재봉의 조절

1	2	3	4	5	6	7	8	9	0



### Utility stitches

유용한 재봉

00	0	1	2	3	4	5	6	7	8	9



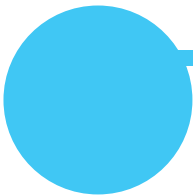
1 Decorative stitches  
장식 재봉

00	0	1	2	3	4	5	6	7	8	9
00		01	02	03	04	05	06	07	08	09
1	10	11	12	13	14	15	16	17	18	19
2	20	21	22	23	24	25	26	27	28	29
3	30	31	32	33	34	35	36	37	38	39
4	40	41	42	43	44	45	46	47	48	49
5	50	51	52	53	54	55	56	57	58	59
6	60	61	62							
9										99



2 Decorative stitches  
장식 재봉

00	0	1	2	3	4	5	6	7	8	9
00		01	02	03	04	05	06	07	08	09
1	10	11	12	13	14	15	16	17	18	19
2	20	21	22	23	24	25	26	27	28	29
3	30	31	32	33	34	35	36	37	38	39



**A** **A** Character stitches (Gothic font)  
캐릭터 재봉(고딕 문자)

00	01	02	03	04	05	06	07	08	09	
00	01	02	03	04	05	06	07	08	09	
01	10	11	12	13	14	15	16	17	18	19
02	20	21	22	23	24	25	26	27	28	29
03	30	31	32	33	34	35	36	37	38	39
04	40	41	42	43	44	45	46	47	48	49
05	50	51	52	53	54	55				

**A** **A** Character stitches (Script font)  
캐릭터 재봉(필기체)

00	01	02	03	04	05	06	07	08	09	
00	01	02	03	04	05	06	07	08	09	
01	10	11	12	13	14	15	16	17	18	19
02	20	21	22	23	24	25	26	27	28	29
03	30	31	32	33	34	35	36	37	38	39
04	40	41	42	43	44	45	46	47	48	49
05	50	51	52	53	54	55				



A



# Character stitches (Outline style)

캐릭터 재봉(테두리 문자)

00	01	02	03	04	05	06	07	08	09	
00	01	02	03	04	05	06	07	08	09	
01	A	B	C	D	E	F	G	H	I	
10	J	K	L	M	N	O	P	Q	R	S
20	T	U	V	W	X	Y	Z	&	?	!
30	_	0	1	2	3	4	5	6	7	8
40	9	'	,	.	(	)	-	Ä	À	Æ
50	Ñ	Ö	Ø	Ç	Ü	ß				





