

Quick Reference Guide

빠른 설정 가이드



Refer to the operation manual for detailed instruction.

자세한 설명은 사용 설명서를 참조하십시오.



Bobbin winding and setting

2

밑실감기 및 설정



Upper threading

4

윗실 끼우기



Selecting stitch patterns

6

재봉 패턴 선택하기



Combining and saving patterns

10

결합과 패턴의 저장



Saved patterns' memo

11

저장된 패턴의 메모



Summary of stitch patterns

12

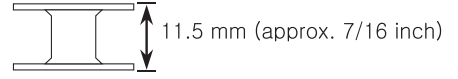
재봉 패턴 요약

Bobbin winding and setting

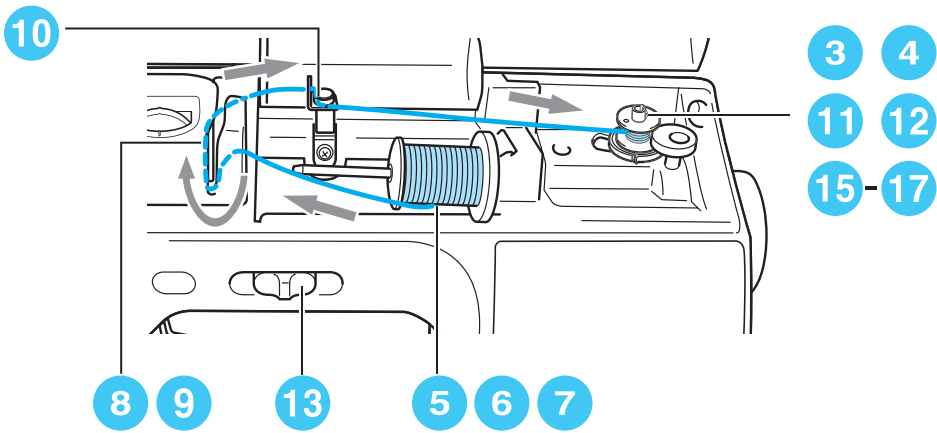
밑실감기 및 설정



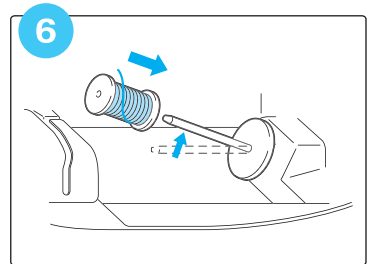
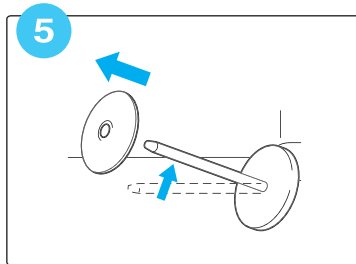
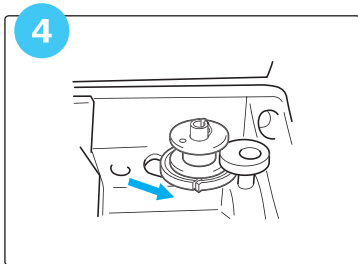
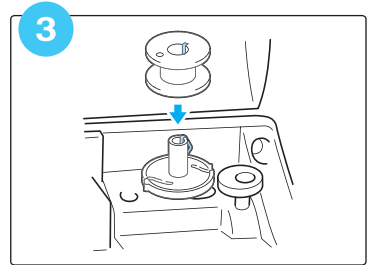
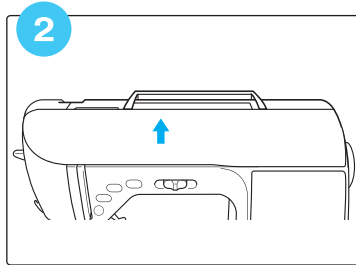
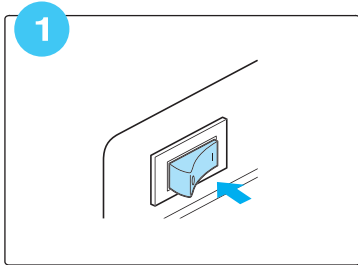
포함된 실토리 또는 동일한 타잎의 실토리만 사용하십시오.

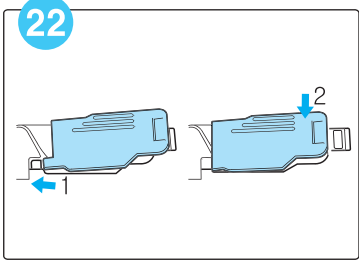
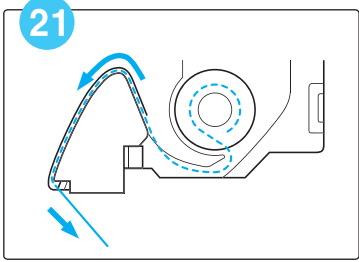
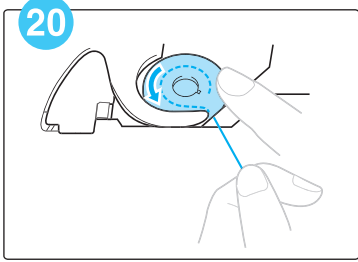
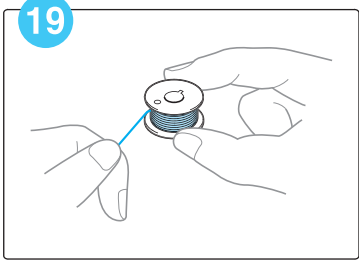
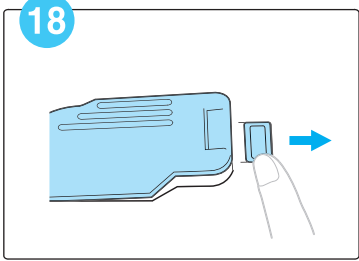
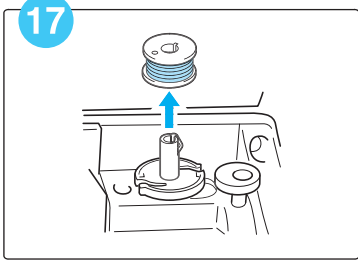
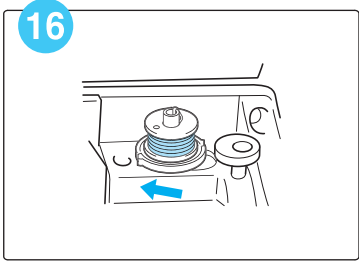
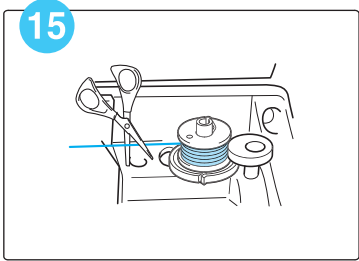
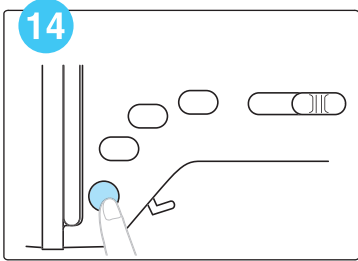
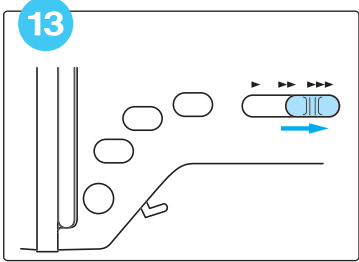
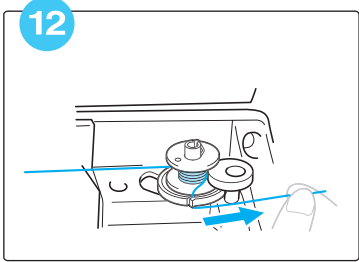
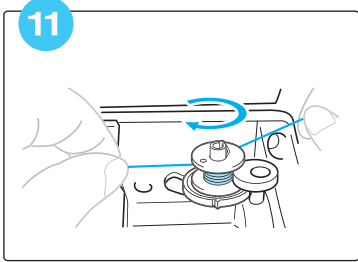
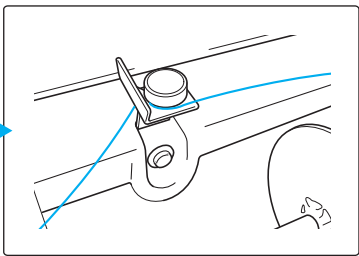
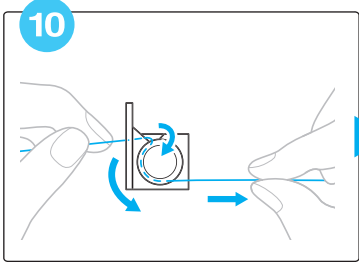
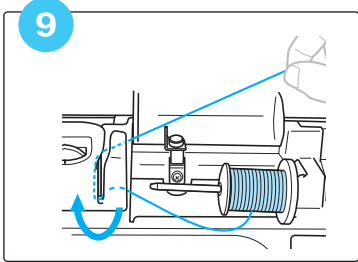
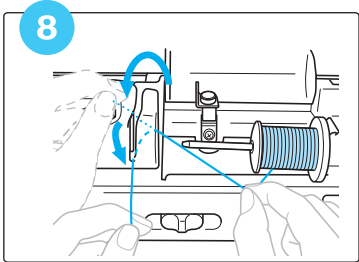
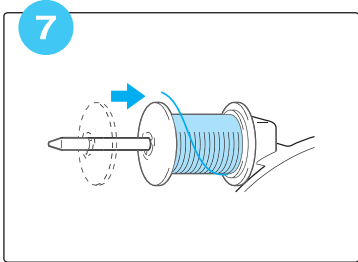
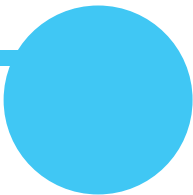


사용 실토리



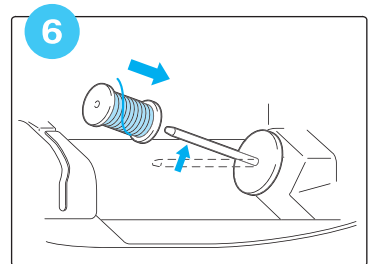
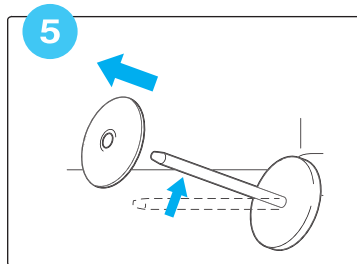
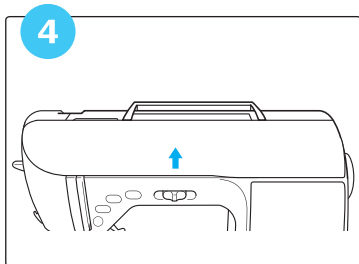
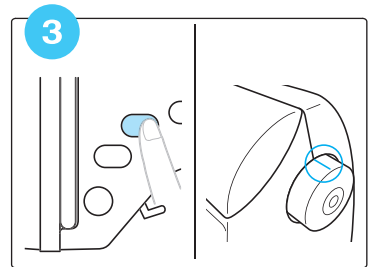
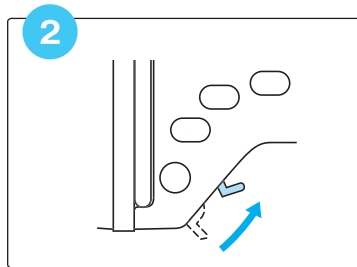
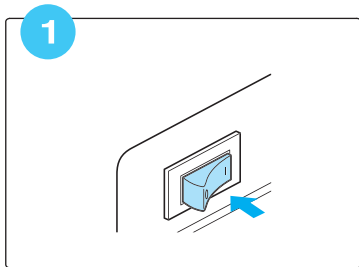
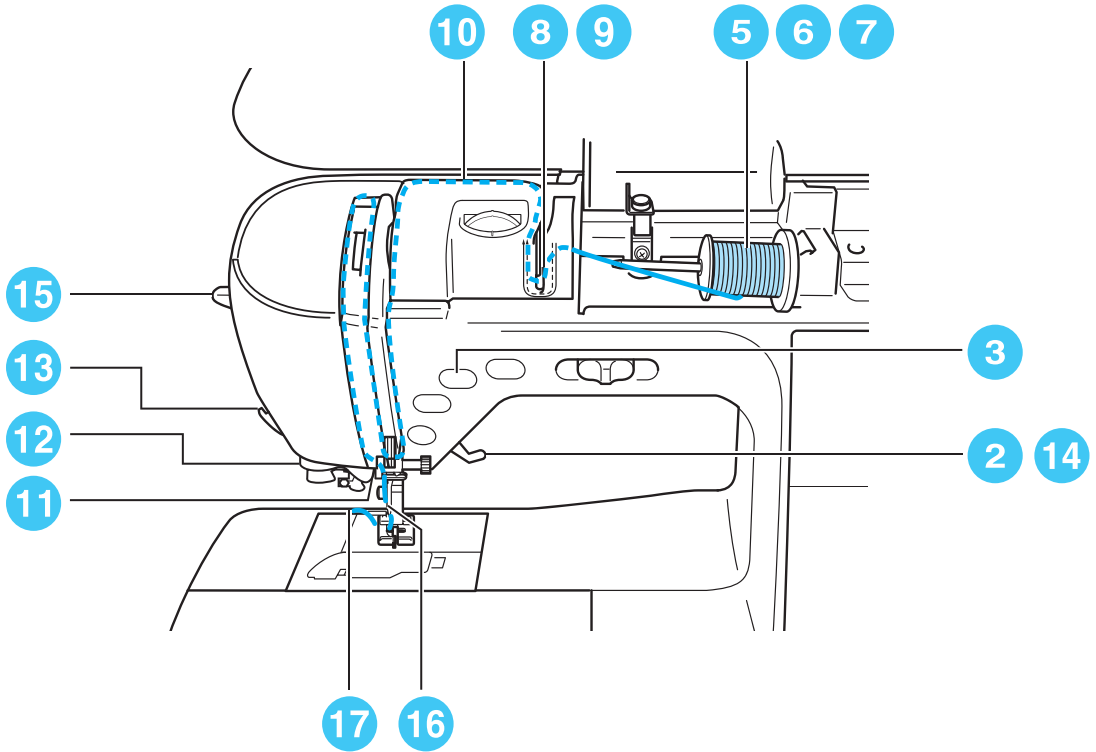
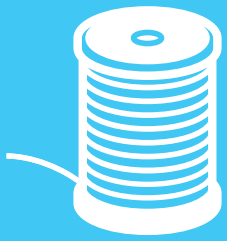
표시된 숫자의 순서대로 실을 걸어 주십시오. 자세한 내용은 사용 설명서를 참조 하십시오.

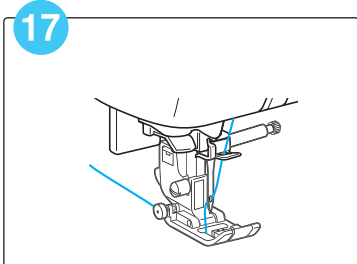
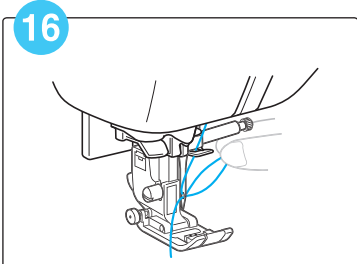
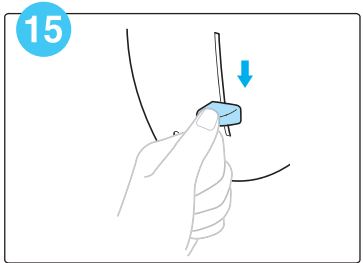
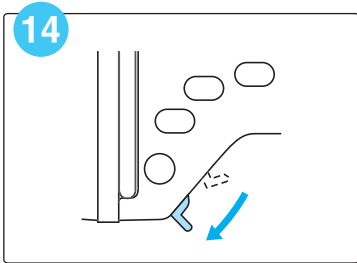
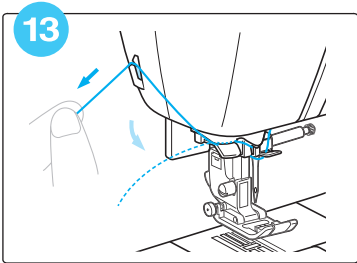
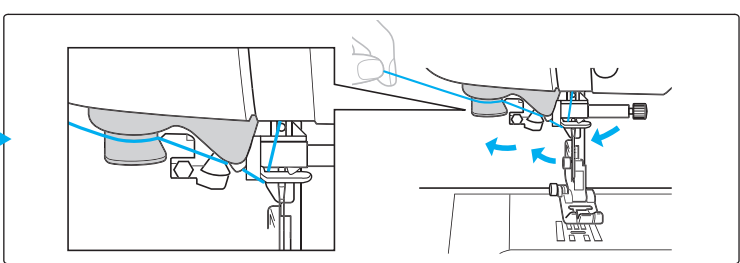
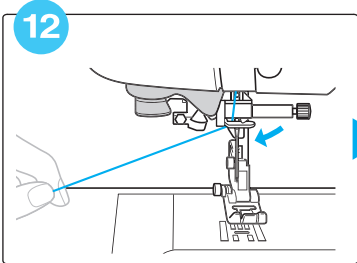
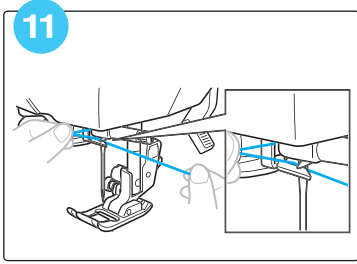
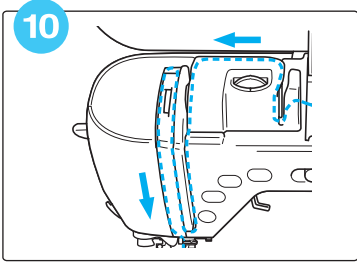
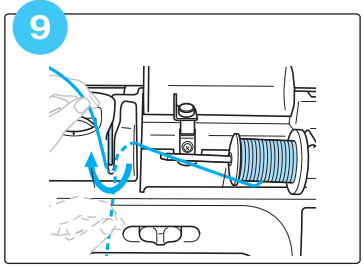
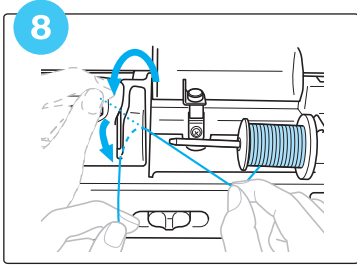
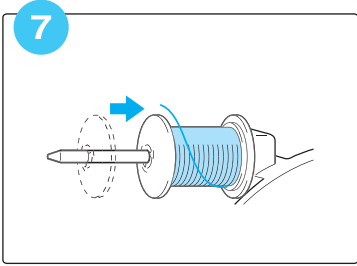
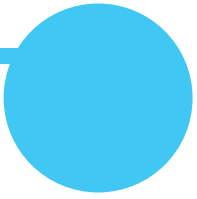




Upper threading

윗실 끼우기



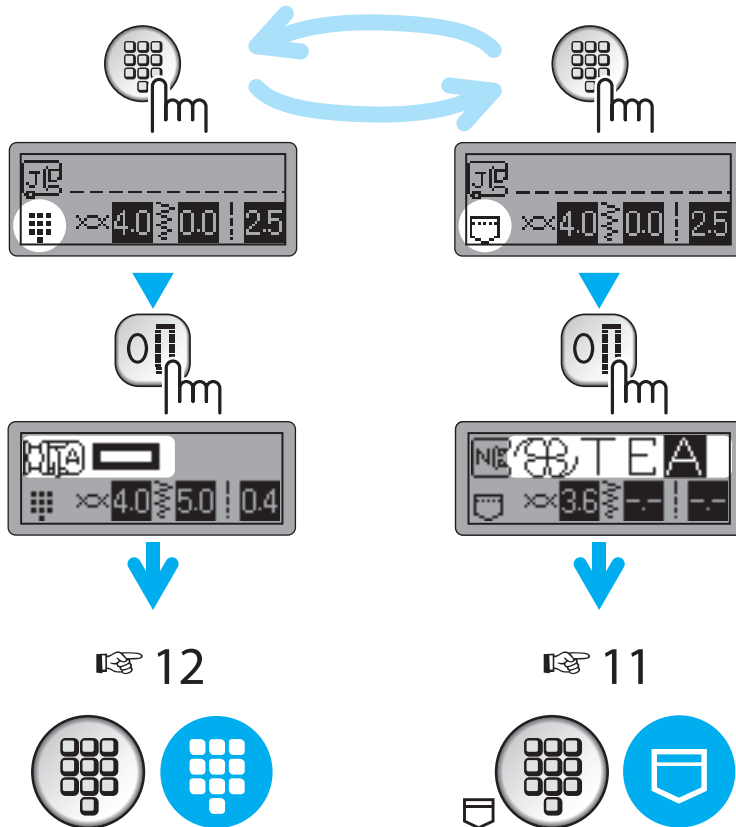
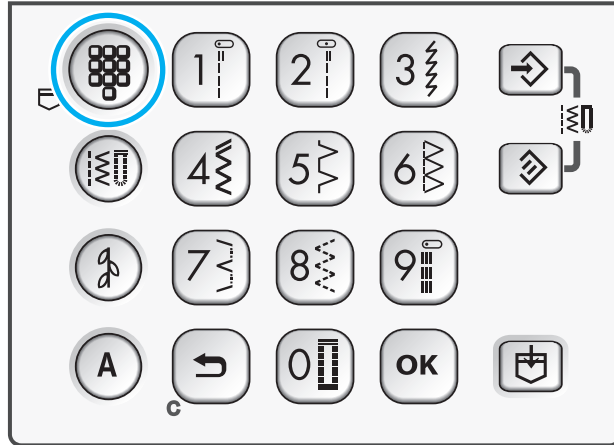


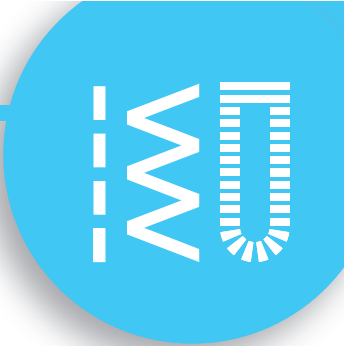
Selecting stitch patterns

재봉 패턴 선택하기

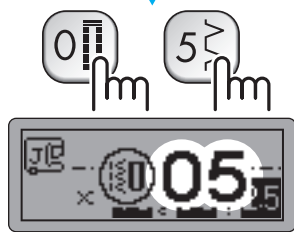
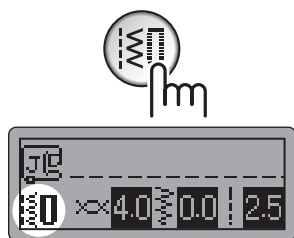
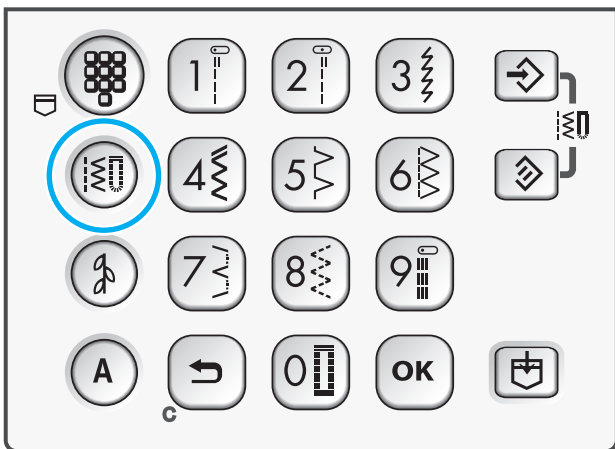
Preset utility stitch/
saved pattern

유용한 재봉 설정/
패턴 저장

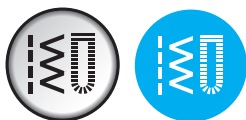




Utility stitches
유용한 재봉



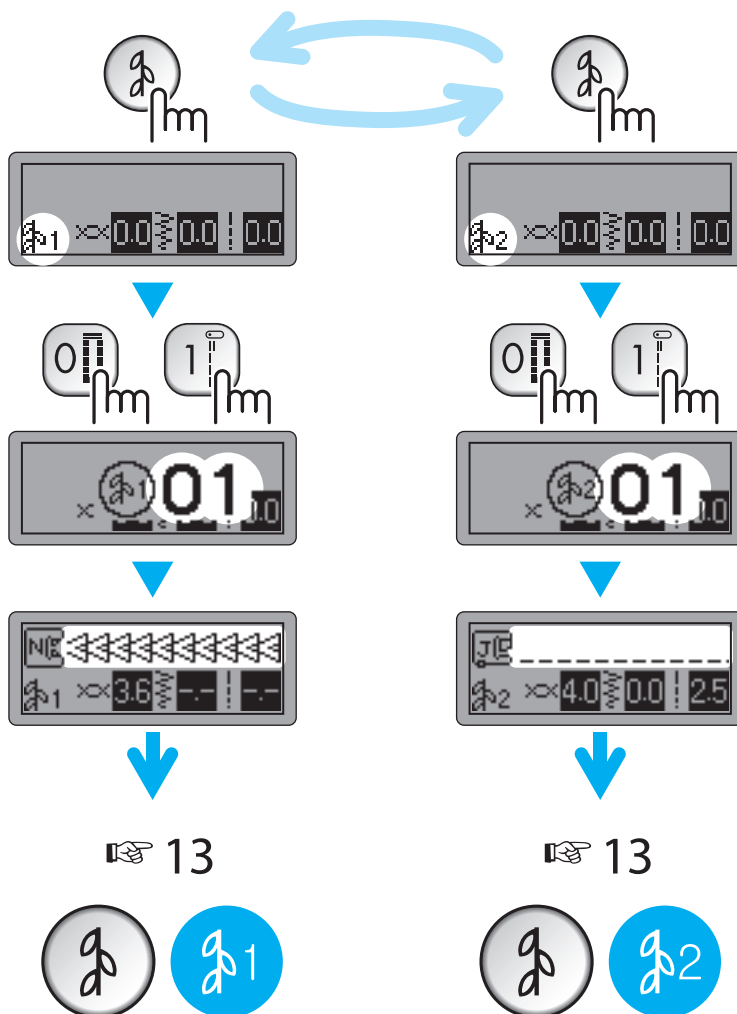
12





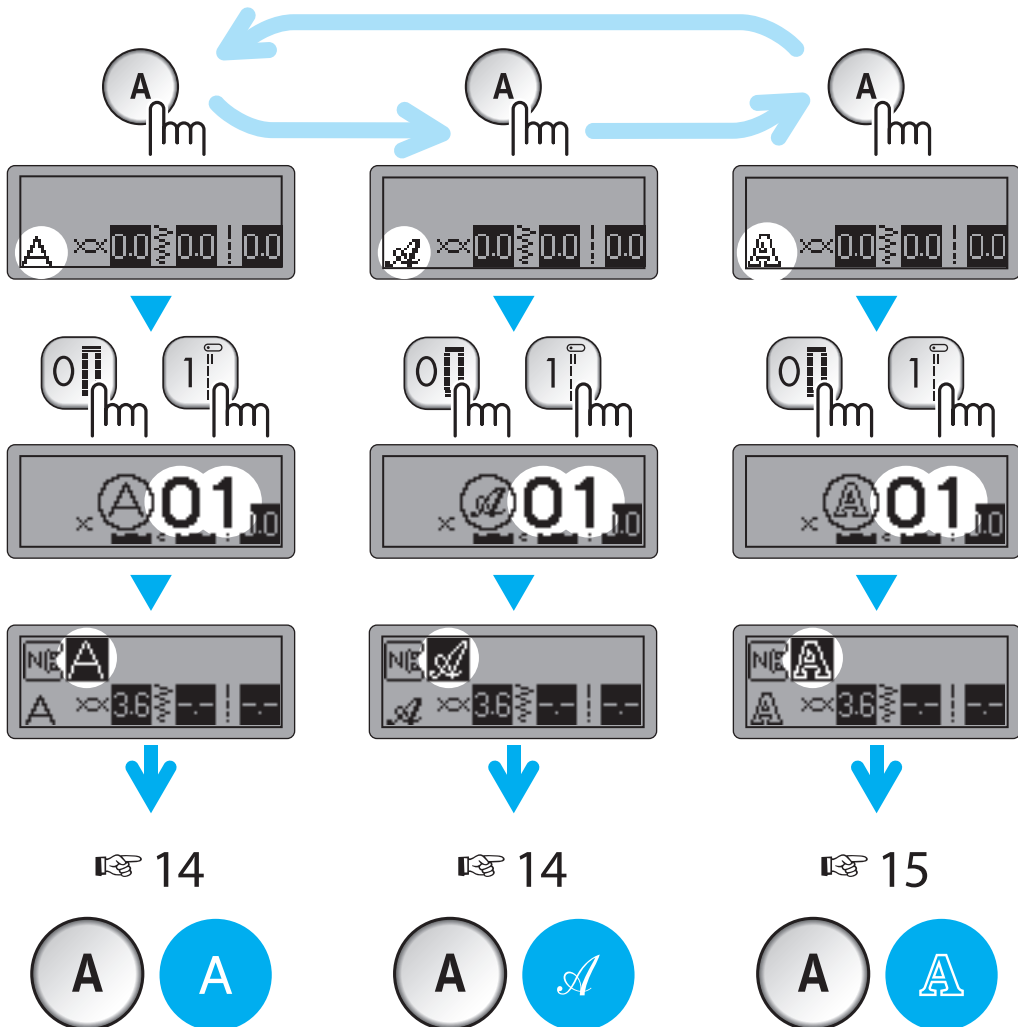
Decorative stitches

장식 재봉



A

Character stitches
캐릭터 재봉



Combining and saving patterns

결합과 패턴의 저장

예제 :

☸ TEA

Combining patterns 패턴의 연결

1

2

3

4

Saving patterns 패턴의 저장

5

6

7

Saved patterns' memo

저장된 패턴의 메모



Saved patterns
저장된 패턴

1	
2	
3	
4	
5	
6	
7	
8	
9	
0	

Summary of stitch patterns

재봉 패턴 요약



Preset utility stitch

유용한 재봉의 조절

1	2	3	4	5	6	7	8	9	0



Utility stitches

유용한 재봉

00	0	1	2	3	4	5	6	7	8	9
00										
01										
02										
03										
04										
05										
06										
07										
08										
09										



Decorative stitches

장식 재봉

00	0	1	2	3	4	5	6	7	8	9
00	01	02	03	04	05	06	07	08	09	
10	11	12	13	14	15	16	17	18	19	
20	21	22	23	24	25	26	27	28	29	
30	31	32	33	34	35	36	37	38	39	
40	41	42	43	44	45	46	47	48	49	
50	51	52	53	54	55	56	57	58	59	
60	61	62	63	64	65	66	67	68	69	
9										99



Decorative stitches

장식 재봉

00	0	1	2	3	4	5	6	7	8	9
00	01	02	03	04	05	06	07	08	09	
10	11	12	13	14	15	16	17	18	19	
20	21	22	23	24	25	26	27	28	29	
30	31	32	33	34	35	36	37	38	39	

A Character stitches (Gothic font)
캐릭터 재봉(고딕 문자)

00	01	02	03	04	05	06	07	08	09
01	01	02	03	04	05	06	07	08	09
10	11	12	13	14	15	16	17	18	19
20	21	22	23	24	25	26	27	28	29
30	31	32	33	34	35	36	37	38	39
40	41	42	43	44	45	46	47	48	49
50	51	52	53	54	55	56	57	58	59
60	61	62	63	64	65	66	67	68	69
70	71	72	73	74	75	76	77	78	79
80	81	82	83	84	85	86	87	88	89
90	91	92	93	94	95	96	97		

A Character stitches (Script font)
캐릭터 재봉(필기체)

00	01	02	03	04	05	06	07	08	09
01	01	02	03	04	05	06	07	08	09
10	11	12	13	14	15	16	17	18	19
20	21	22	23	24	25	26	27	28	29
30	31	32	33	34	35	36	37	38	39
40	41	42	43	44	45	46	47	48	49
50	51	52	53	54	55	56	57	58	59
60	61	62	63	64	65	66	67	68	69
70	71	72	73	74	75	76	77	78	79
80	81	82	83	84	85	86	87	88	89
90	91	92	93	94	95	96	97		

A

A

Character stitches (Outline style)

캐릭터 재봉(테두리 문자)

00	01	02	03	04	05	06	07	08	09
00	01	02	03	04	05	06	07	08	09
01	01	02	03	04	05	06	07	08	09
10	11	12	13	14	15	16	17	18	19
20	21	22	23	24	25	26	27	28	29
30	31	32	33	34	35	36	37	38	39
40	41	42	43	44	45	46	47	48	49
50	51	52	53	54	55	56	57	58	59
60	61	62	63	64	65	66	67	68	69
70	71	72	73	74	75	76	77	78	79
80	81	82	83	84	85	86	87	88	89
90	91	92	93	94	95	96	97		

