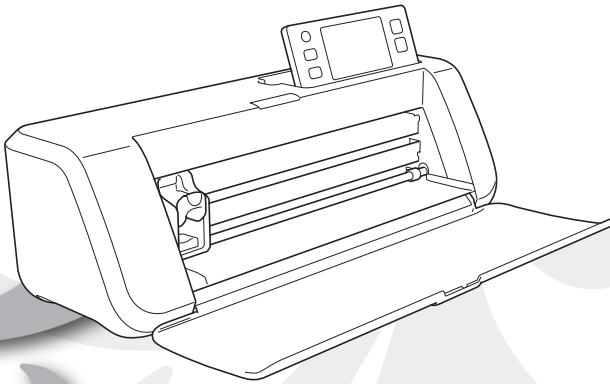


# Operation Manual Addendum

## Cutting Machine

Product Code: 891-Z01



Be sure to read this document before using the machine.  
We recommend that you keep this document nearby for future reference.

## Introduction

This manual provides additional information not described in the Operation Manual.  
Be sure to read this information before using the machine.

## Trademarks

IBM is a registered trademark or a trademark of International Business Machines Corporation.  
Microsoft, Windows and Windows Vista are registered trademarks or trademarks of Microsoft Corporation.

Each company whose software title is mentioned in this manual has a Software License Agreement specific to its proprietary programs.

All other brands and product names mentioned in this manual are registered trademarks of their respective companies.  
However, the explanations for markings such as ® and ™ are not clearly described within the text.

## Connecting the Machine to the Computer

### ■ Connecting Your Machine to the Computer

- Compatible models:  
IBM PC with a USB port as standard equipment  
IBM PC-compatible computer equipped with a USB port as standard equipment
- Compatible operating systems:  
Microsoft Windows Vista, Windows 7,  
Windows 8/Windows 8.1, Windows 10

### ■ USB cable (Sold separately)

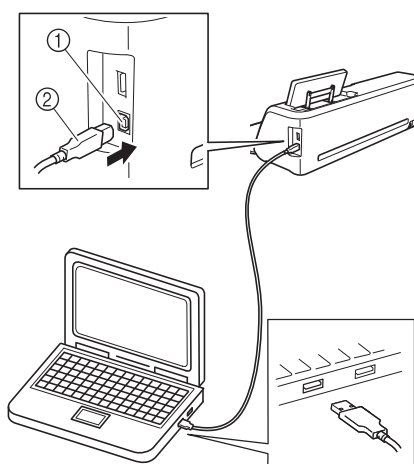
- We recommend using a USB 2.0 cable (Type A/B) that is no longer than 2 meters (6 feet).

## Saving Patterns in the Computer

Using the USB cable, the machine can be connected to your computer, and the patterns can be temporarily retrieved from and saved in the "Removable Disk" folder in your computer. The saved patterns are deleted when the machine is turned OFF.

For Computers and Operating Systems, see "Connecting Your Machine to the Computer".

- 1 Plug the USB cable connector into the corresponding USB ports for the computer and for the machine.
- 2 Turn on your computer and select "Computer (My computer)".



- ① USB port for computer
- ② USB cable connector

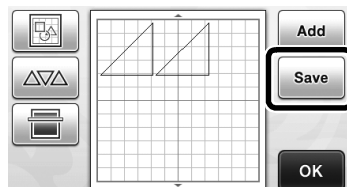
► The "Removable Disk" icon will appear in "Computer (My computer)" on the computer.



### Note


- The connectors on the USB cable can only be inserted into a port in one direction. If it is difficult to insert the connector, do not insert it with force. Check the orientation of the connector.

- 3 Touch the "Save" key to display the destination memory selection screen.



- 4 Touch

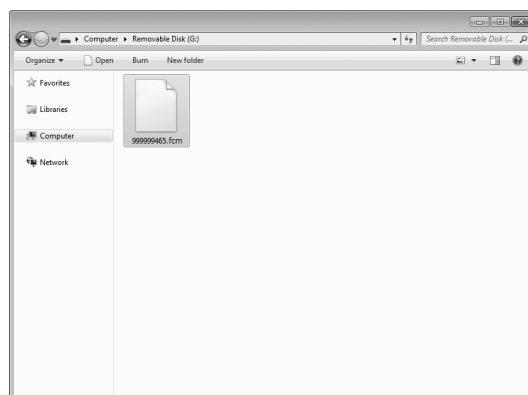


- \* Touch  to return to the original screen without saving.



- The pattern will be temporarily saved to "Removable Disk" under "Computer (My computer)".

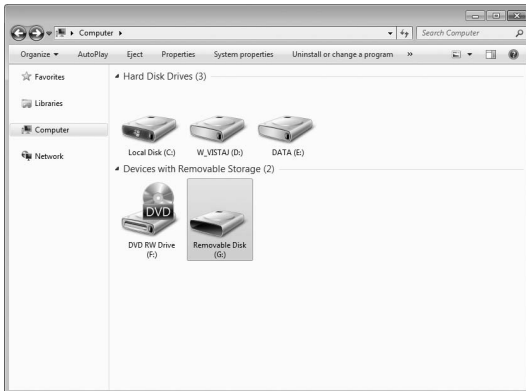
- 5 Select the pattern's .fcm file in "Removable Disk" and copy the file to the computer.



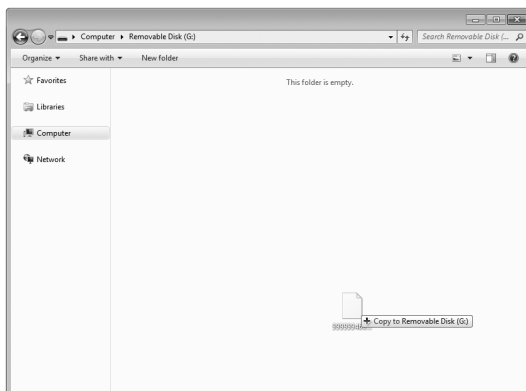
## Recalling from the Computer

For Computers and Operating Systems, see “Connecting Your Machine to the Computer” on page 2.

- 1 Plug the USB cable connector into the corresponding USB ports for the computer and for the machine.
- 2 On the computer, open “Computer (My computer)” then go to “Removable Disk”.



- 3 Move/copy the pattern data to “Removable Disk”.



- Pattern data in “Removable Disk” is written to the machine.



### Note

- While data is being written, do not disconnect the USB cable.
- Do not create folders within “Removable Disk”. Since folders are not displayed, pattern data within folders cannot be recalled.

- 4 Touch the “Saved Data” key to display the destination memory selection screen.



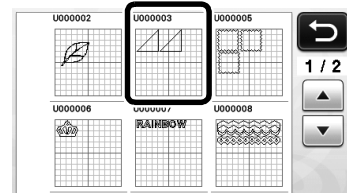
- 5 Touch



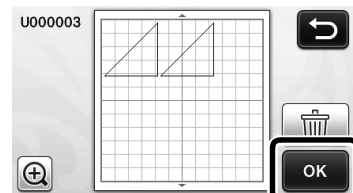
- The patterns in the computer are displayed on the selection screen.

- 6 Touch the key of the pattern you want to recall.

- \* Touch to return to the original screen.



- 7 Touch the “OK” key.




- The Pattern layout screen is displayed.

## Update Procedure Using Computer

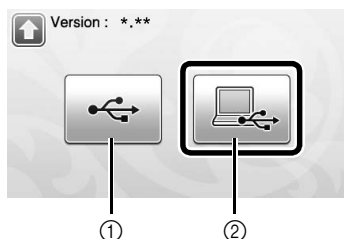
For Computers and Operating Systems, see “Connecting Your Machine to the Computer” on page 2.

### 1 While holding down in the operation

panel, press  to turn on the machine.

- ▶ The following screen will appear on the LCD.

### 2 Touch .



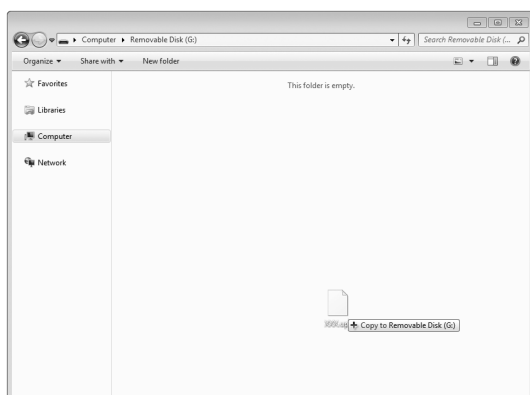
- ① Update using USB flash drive
- ② Update using computer

\* Update for using a USB flash drive, refer to the Operation manual.

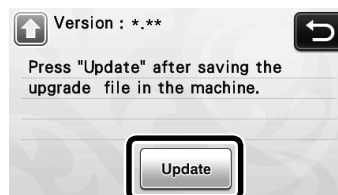
### 3 Plug the USB cable connector into the corresponding USB ports for the computer and for the machine.

- ▶ “Removable Disk” will appear in “Computer (My computer)”.

### 4 Copy the upgrade file to “Removable Disk”.



### 5 Touch the “Update” key to start the update.




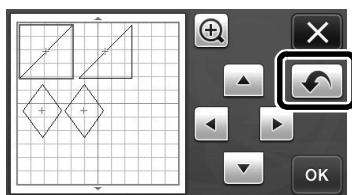
- ▶ When updating is finished, the completion message appears.

### 6 Unplug the USB cable, and turn the machine off and on again.

## Updated Operational Features

### Undoing an Operation


In the editing screen after patterns have been arranged in the mat, touch  to undo the previous operation.



#### Memo

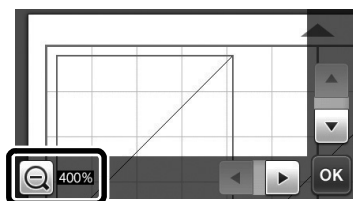
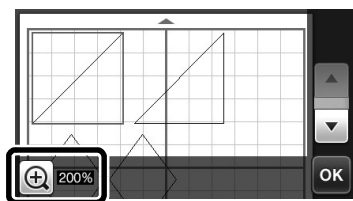
- Up to 10 of the previous operations can be undone.
- After an operation is undone, it cannot be redone.
- If the number of patterns has changed as a result of adding, removing, welding or unifying patterns, only operations after the number of patterns were changed can be undone.
- When patterns are automatically arranged, the operation cannot be undone.

### Enlarging the Pattern by 400%

Touch  to display the patterns enlarged. Then, touch




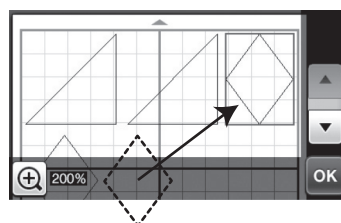
 to display the patterns enlarged by 400%.



### Moving Patterns After Displaying Enlarged

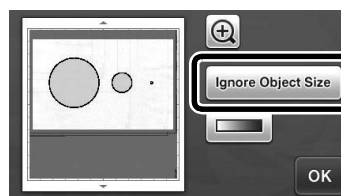
When patterns are displayed enlarged (200% or 400%), they can be dragged to a different location.

- Patterns can be moved in the screen displaying enlarged patterns with  in the lower-right corner.



### Change to Key Name

In the screen that appears after an image is converted to cutting lines in "Scan to Cut Data" mode, the name of the key for adjusting the pattern size has changed from "Delete Size" to "Ignore Object Size".




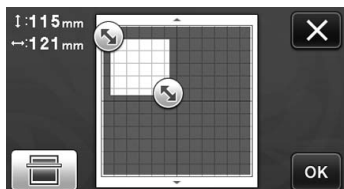
---

## Scan Settings

---

When saving a scanned image to a USB flash drive, the desired scanning area can be specified.

- 1 Follow steps 1 through 5 in “Scan Settings” of “Tutorial 5- Scanning to USB” in the Operation Manual.
- 2 Select “Custom”, and then touch the “OK” key.
- 3 Using the touch pen, drag  to select the scanning area, and then touch the “OK” key.




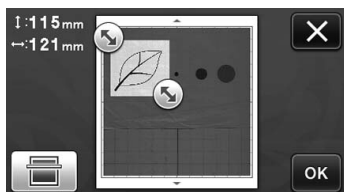
- The scanning area (white area) can also be dragged to move it.



### Memo

---

- Load the mat with the original to be scanned attached, and then touch  to display the mat in the screen. The scanning area can be selected while viewing the displayed image.



- 
- 4 Continue from step 7 in “Scan Settings” of “Tutorial 5- Scanning to USB” in the Operation Manual.

Please visit us at <http://support.brother.com> where you can get product support and answers to frequently asked questions (FAQs).