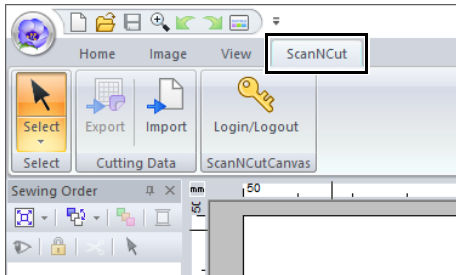


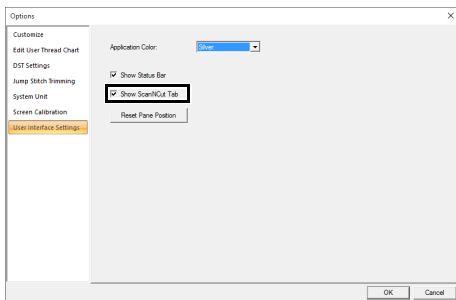
Compatibility with ScanNCut (Brother cutting machine)

About the [ScanNCut] tab (Layout & Editing)

ScanNCut (Brother cutting machine) can be compatible with PE-DESIGN by this tab.

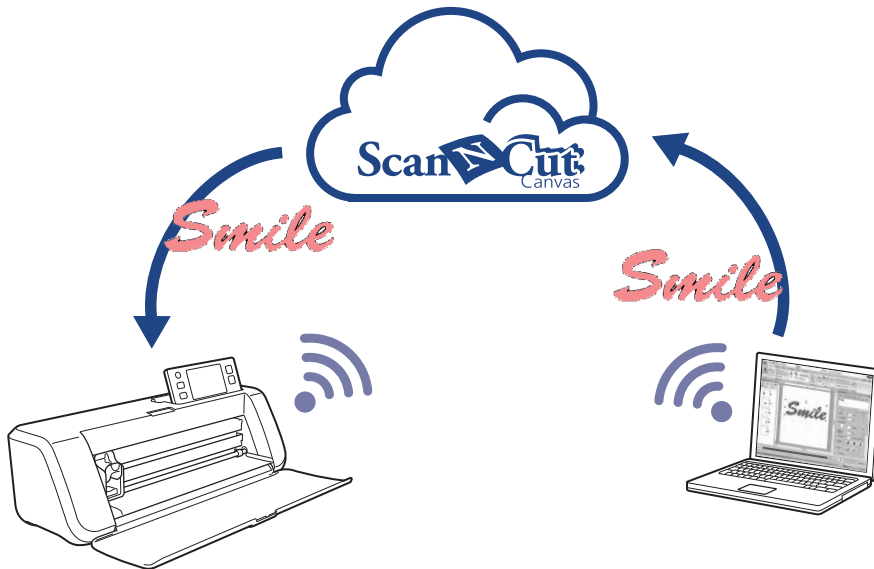


If the **[ScanNCut]** tab is no longer needed, click **[Options]** in the **[Option]** menu in the upper-right corner of the window, click **[User Interface Settings]**, and then clear the **[Show ScanNCut tab]** check box.



Tutorial: Sending an FCM File to ScanNCutCanvas

From this software, patterns can be sent to ScanNCutCanvas (online service for Brother cutting machines). In addition, patterns can be sent from ScanNCutCanvas to your ScanNCut machine (wireless network models only).



- ScanNCutCanvas is a pattern-editing application for Brother cutting machines. In order to use this function, create your free account from the following link.
<https://scanncutcanvas.brother.com>



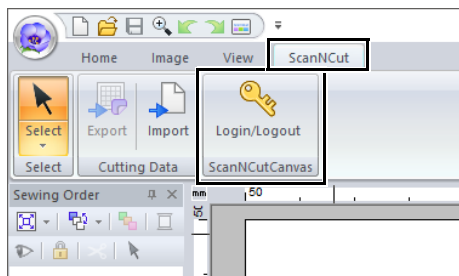
- Embroidered fabric cannot be cut with the ScanNCut machine.
- There are limitations on the thickness of fabric that can be cut by the ScanNCut machine.
- For details, refer to the Operation Manual for ScanNCut (Brother cutting machine).
- This function cannot be used if a pattern containing text with the **[Name Drop]** attribute applied is selected.

The sample file for this tutorial is located at
Documents (My documents)¥PE-DESIGN 10¥Tutorial¥TutorialSNC_1.

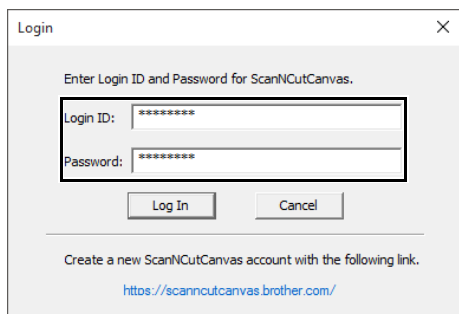
Step 1	Logging in to ScanNCutCanvas
Step 2	Selecting a pattern
Step 3	Sending a pattern to ScanNCutCanvas

Step 1 Logging in to ScanNCutCanvas

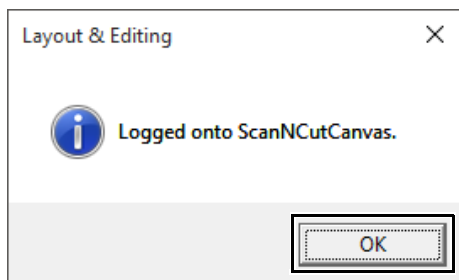
- 1 Click the **[ScanNCut]** tab, and then click **[Login/Logout]** in the **[ScanNCutCanvas]** group.



- 2 In the **[Login]** dialog box, type the login ID and password for ScanNCutCanvas.

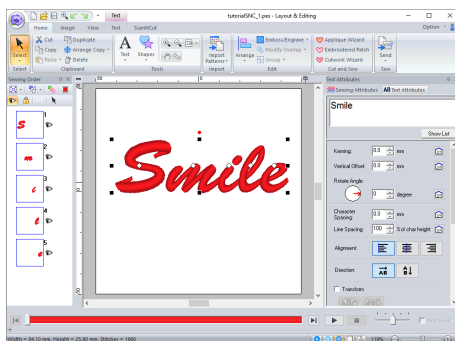


- 3 When login is finished, the following message appears. Click **[OK]**.



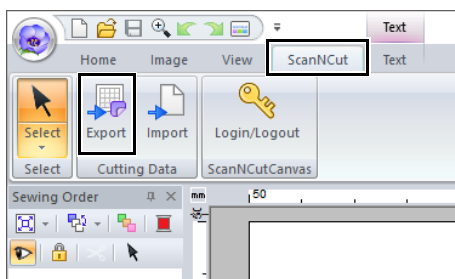
Step 2 Selecting a pattern

- 1 Select the **[Text]** tool, and then type in "Smile".

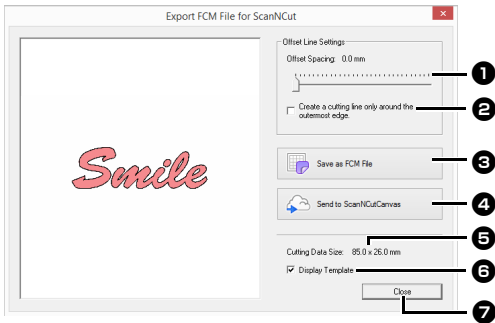


Step 3 Sending a pattern to ScanNCutCanvas

- 1 Click the **[ScanNCut]** tab, and then click **[Export]** in the **[Cutting Data]** group.



2 Specify the settings for the cutting line.



1 Offset Spacing

Set the **[Offset Spacing]** to specify the distance from the outline of the pattern to the cutting line.

For this example, set it to **[0.0]** mm.

- If **[Offset Spacing]** is set to 0.0 mm, the outline of the pattern will become the cutting line.



- If **[Offset Spacing]** is set to any setting other than 0.0 mm and the cutting lines overlap, they will be merged.



- ### 2
- Select this check box to draw the cutting line only around the outer edge of the pattern. Clear this check box to also draw cutting lines inside the pattern. For this example, clear this check box.

ON

OFF



3 Save as FCM File

Click this button to display the **[Save as FCM File]** dialog box, where the destination for saving the file can be specified.

4 Send to ScanNCutCanvas

Click this button to send the FCM file to ScanNCutCanvas.

5 Cutting Data Size

Displays the size of the cutting data.

6 Display Template

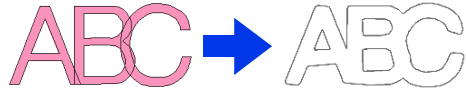
Select this check box to display a faint image of the original pattern.

7 Close

Click this button to close the dialog box.



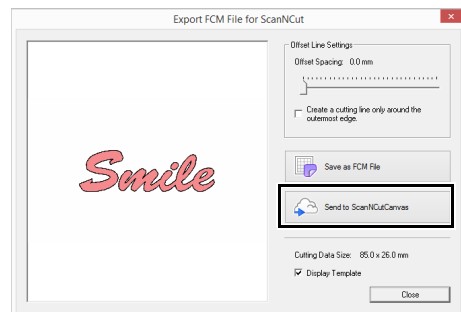
- If patterns overlap, they will be merged.



However, if **[Offset Spacing]** is set to 0.0 mm, the overlapped pattern may not be merged.

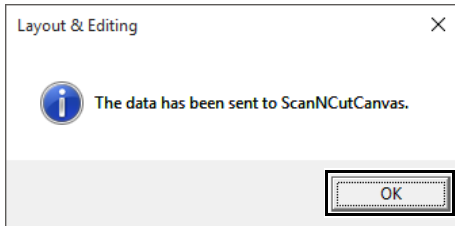
- Extremely small data will not be exported.
- The maximum size for cutting data fits within a 12 × 12 inch (305 × 305 mm) mat. If this maximum is exceeded, an error message appears.
- If more than 300 cutting data are contained in an embroidery design, the FCM file cannot be saved. If this maximum is exceeded, an error message appears.

3 Click the **[Send to ScanNCutCanvas]** button.

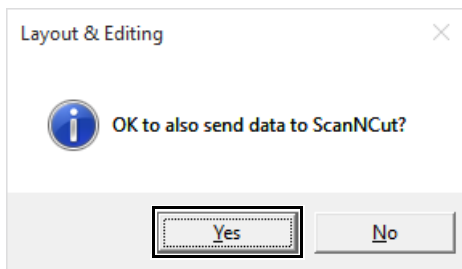


- The password input dialog box will appear if you have not logged into ScanNCutCanvas in [Step 1](#). Type in the login ID and password to log in.

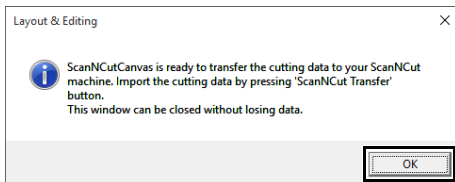
- 4 When the transfer is finished, the following message appears. Click **[OK]**.



- If you have registered your ScanNCut machine (wireless network models only) with your ScanNCutCanvas account, the following message appears.



- To also send the pattern to your ScanNCut machine, click **[Yes]**, and then click **[OK]** again when the following message appears.

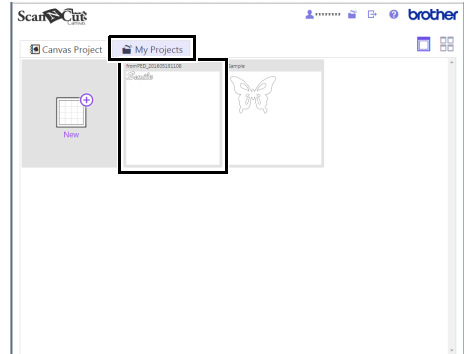


Then, touch the Transfer button on ScanNCut to import the sent pattern.

- To not send the pattern to your ScanNCut machine, click **[No]**.

- 5 The sent pattern appears in the “**My Projects**” screen of ScanNCutCanvas.

- The pattern is named as “fromPED_yyyymmddhhmm” automatically.

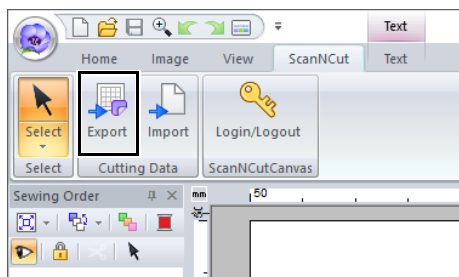


Exporting/Importing an FCM File

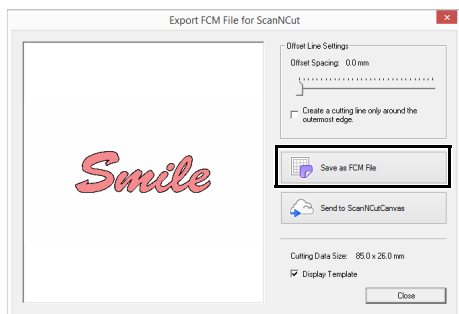
A created embroidery pattern can be exported/ imported as data in the .fcm format so that it can be cut out using ScanNCut (Brother cutting machine), or edit using PE-DESIGN.

Exporting an FCM File

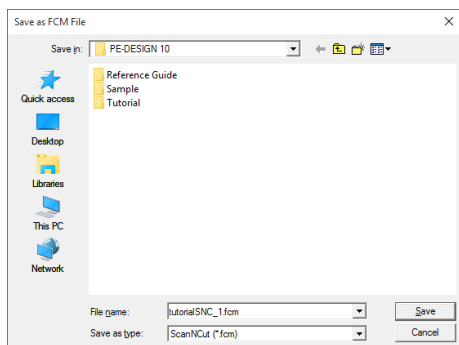
- 1 Select the pattern(s), and then click the **[ScanNCut]** tab.
- 2 Click **[Export]** in the **[Cutting Data]** group.



- 3 After the cutting line settings have been specified, click the **[Save as FCM File]** button.



- 4 Select the drive and the folder, and then type in the file name.

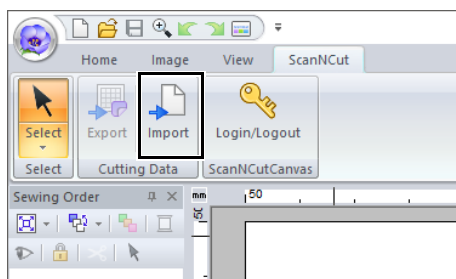


- 5 Click **[Save]** to save the data.

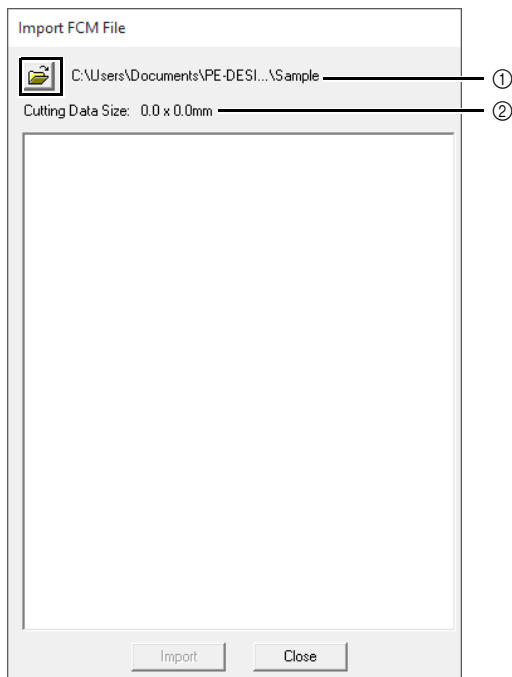
Importing an FCM File

An FCM file can be imported into PE-DESIGN as an embroidery pattern.

- 1 Click the **[ScanNCut]** tab.
- 2 Click **[Import]** in the **[Cutting Data]** group

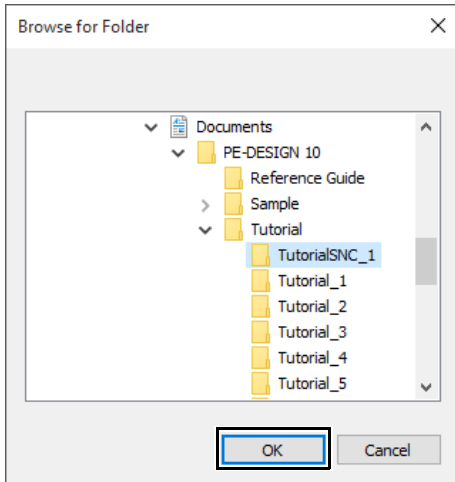


- 3 Click .

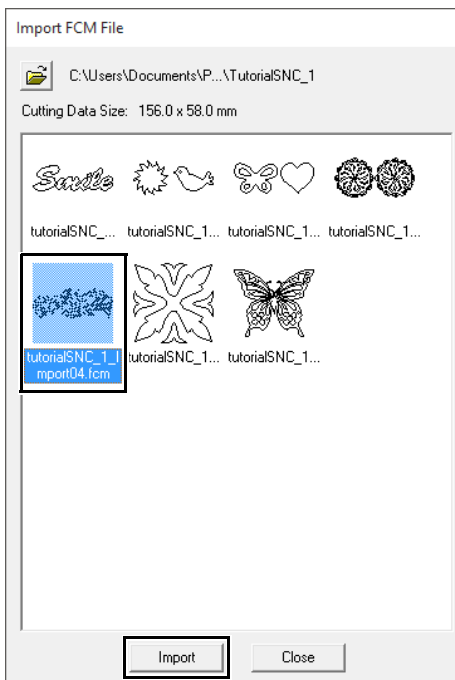


- ① Indicates the path to the currently selected folder.
- ② Displays the size of the cutting data.

- 4 Select a folder, and then click [OK].



- 5 Select a thumbnail, and then click [Import].



- 6 The imported embroidery pattern appears in the Design Page.

