

# EN Installation Guide

Thank you very much for purchasing our product. To obtain the best performance from this unit and to ensure safe and correct operation, please read this document carefully, and then keep it in a safe place together with your warranty.

## Product Agreement

Before installing this software, carefully read the following product agreement, which has been provided for this product. Use this software only if you agree to the terms of this agreement. By installing this software, you agree to the conditions of its use.

### 1) General terms

This is an agreement between you (the end-user) and our company for this product.

### 2) Use of this product

You may install and use this product on only one computer.

### 3) Limitations on duplications

You may not duplicate this product, except for backup purposes.

### 4) Limitations on modifications

You may not modify or disassemble this product in any way.

### 5) Limitations on transfer

This software may not be transferred to or used in any other way by a third party.

### 6) Warranty

We accept no responsibility for your choice or use of this product or for any damages that may arise out of its use.

### 7) Others

This product is protected by copyright laws.

## Please read before using this product

### For designing beautiful embroidery designs

This system allows you to create a wide variety of embroidery designs and supports a wider range of sewing attribute settings (thread density, sewing pitch, etc.). However, the final result will depend on your particular sewing machine model. We recommend that you make a trial sewing sample with your sewing data before sewing on the final material.

### For safe operation

- Do not save any files on the "PE-DESIGN Software Key" for transferring or storage.
- Do not plug the "PE-DESIGN Software Key" into your embroidery machine.

### For a longer service life

- When storing the "PE-DESIGN Software Key", avoid direct sunlight and high humidity locations.  
Do not store the "PE-DESIGN Software Key" close to a heater, iron or other hot objects.
- Do not spill water or other liquids on the "PE-DESIGN Software Key".
- Do not drop or hit the "PE-DESIGN Software Key".

### For repairs or adjustments

In the event that a malfunction occurs or adjustment is required, please consult your nearest service center.

### Notice

Neither this Installation Guide nor the Instruction Manual explains how to use your computer under Windows®. Please refer to the Windows® manuals.

## Trademarks

- Windows® and Windows Vista® are registered trademarks of Microsoft Corporation.
- Other product names mentioned in the Installation Guide and Instruction Manual may be trademarks of registered trademarks of their respective companies and are hereby acknowledged.

## Important

Using this unit for unauthorized copying of material from purchased embroidery data, newspapers and magazines for commercial purpose is an infringement of copyrights which is punishable by law.

## Caution

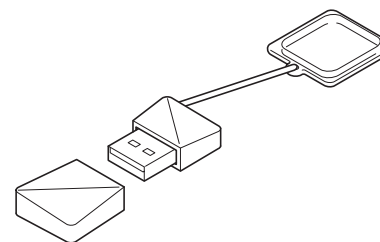
The software included with this product is protected by copyright laws. This software can be used or copied only in accordance with the copyright laws.

**SAVE THESE INSTRUCTIONS**  
**This product is intended for household use.**

**For additional product information and updates, visit our web site at:**  
**<http://www.brother.com/> or <http://support.brother.com>**

## Package contents

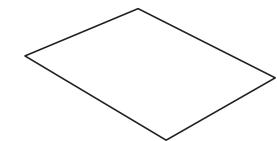
Check that the following items are included. If anything is missing or damaged, contact your authorized dealer or Brother Customer Service.



**PE-DESIGN Software Key\***

Containing the software and  
Instruction Manual (PDF format)

\* Design is subject to change.



**Installation Guide**

(this manual)

## Precautions for using the "PE-DESIGN Software Key"

- Since this "PE-DESIGN Software Key" device is required to run the software, its replacement value is the retail price of the software. Please keep in a safe place when not in use.
- The "PE-DESIGN Software Key" prevents unauthorized use of this software. The software cannot be started if the "PE-DESIGN Software Key" is not plugged in.
- The "PE-DESIGN Software Key" cannot be used as USB media. Do not save embroidery files on the "PE-DESIGN Software Key" for transferring or storage.
- Do not plug the "PE-DESIGN Software Key" into your embroidery machine.
- Do not format the "PE-DESIGN Software Key".
- Keep the "PE-DESIGN Software Key" away from high humidity, direct sunlight, static electricity and strong shocks. Furthermore, do not bend the "PE-DESIGN Software Key".
- Before installing, back up the installer stored on the "PE-DESIGN Software Key".
- If the installed application is not operating properly, perform the installation again.
- If the computer does not start with the "PE-DESIGN Software Key" plugged in, unplug the "PE-DESIGN Software Key", and then turn on the computer. Plug the "PE-DESIGN Software Key" in again to launch the program.



## Please Read Before Installation

- Before beginning the installation, check that the computer meets the system requirements.
- In order to install the software on Windows® operating system, you must log on to the computer using an account with administrator privileges. If you are not logged on with the administrator account, the password for the administrator account may be requested with Windows®. Type in the password to continue the procedure. For details on logging on to the computer using an account with administrator privileges, refer to the Windows® manual.
- The installation procedure is described for Windows® 10. The procedure and dialog boxes for other operating systems may be slightly different.
- If the installation is canceled before it is completed or if the procedure is not performed as described, the software will not be installed correctly.
- Do not remove the “PE-DESIGN Software Key” from the USB port of the computer while the installation is being performed. Remove the “PE-DESIGN Software Key” after the installation is completed.
- Before beginning the installation, follow the procedure below to back up the installer onto your computer.
  - 1) Create a backup folder on the computer.
  - 2) Copy the entire [PE-DESIGN PLUS2] folder from the “PE-DESIGN Software Key” into the folder created in step 1).
- Do not delete the data in the [PE-DESIGN PLUS2] folder on the “PE-DESIGN Software Key”.

## System Requirements

Before installing the software on your computer, make sure that the computer meets the following minimum PC requirements.

<b>Operating system</b>	Windows Vista®, Windows® 7, 8.1, 10 (32 or 64 bit)
<b>Processor</b>	1 GHz or more
<b>Memory</b>	512 MB (1 GB or more is recommended.)
<b>Hard disk free space</b>	300 MB
<b>Monitor</b>	XGA (1024 × 768), 16-bit color or higher
<b>Port</b>	Two or more USB ports (used for connecting the “PE-DESIGN Software Key” and for transferring embroidery data to an embroidery machine)
<b>Device</b>	Mouse
<b>Printer</b>	Graphic printer that is supported by your system (if you wish to print your images)
<b>Internet access</b>	Required for updating PE-DESIGN



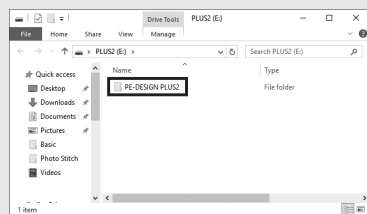
- This product may not operate correctly with some computers.

## Installing the Software

- 1 Plug the “PE-DESIGN Software Key” into the USB port on the computer.

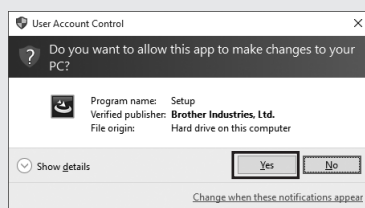


- 2 Open the [PE-DESIGN PLUS2] folder, and then double-click the [setup.exe] file.



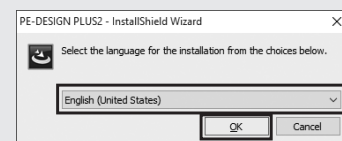
→ The [User Account Control] dialog box appears.

- 3 Click [Yes].



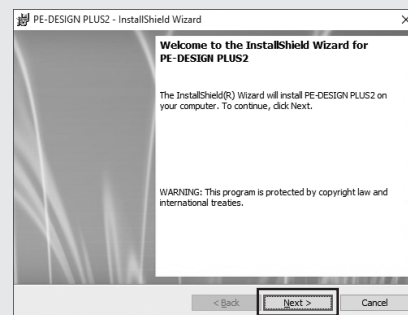
→ After a short while, the following dialog box automatically appears.

- 4 Select the desired language, and then click [OK].



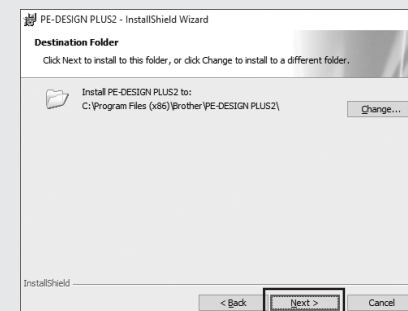
→ The [InstallShield Wizard] starts up, and the first dialog box appears.

- 5 Click [Next] to continue with the installation.



→ A dialog box appears, allowing you to select the folder where the software will be installed.

- 6 Check the installation location, and then click [Next].

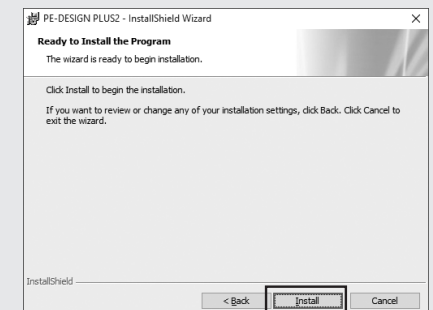


To install the application into a different folder:

- 1) Click [Change].
- 2) In the [Change Current Destination Folder] dialog box that appears, select the drive and folder. (If necessary, type in the name of a new folder.)
- 3) Click [OK].  
→ The [Destination Folder] dialog box of the [InstallShield Wizard] shows the selected folder.
- 4) Click [Next] to install the application into the selected folder.

→ A dialog box appears, indicating that preparations for installation are finished.

- 7 Click [Install] to install the application.



→ When the installation is completed, the following dialog box appears.

- 8 Select the [Launch PE-DESIGN PLUS2] check box, and then click [Finish]. This completes the installation and starts up PE-DESIGN PLUS2.

