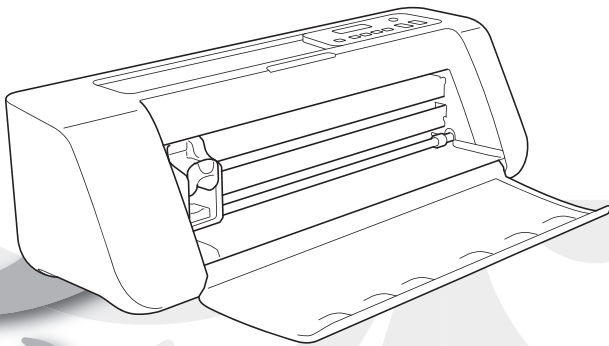


# Operation Manual

## Cutting Machine

Product Code: 891-Z08



Be sure to read this document before using the machine.

## INTRODUCTION

Thank you for purchasing this machine.

Before using this machine or attempting any maintenance, carefully read the “IMPORTANT SAFETY INSTRUCTIONS” on the Product Safety Guide, and then study the Operation Manual for the correct operation of the various functions. In addition, after you have finished reading this manual, store it where it can quickly be accessed for future reference. Failure to follow these instructions may result in an increased risk of personal injury or damage to property, including through fire, electrical shock, burns or suffocation.


## IMPORTANT NOTICE

- This machine is intended for household use.
- This machine is approved for use in the country of purchase only.
- Due to product quality improvements, the specifications or appearance of this machine may change without notice.
- The contents of this document are subject to change without notice.
- The actual operations and screens may differ, for example, after the application has been upgraded.
- The contents of this document may not be duplicated or reproduced, partially or in full, without permission.
- We assume no responsibility for damages arising from earthquakes, fire, other disasters, actions of third parties, the user's intentional or negligent operation, misuse or operation under other special conditions.
- For additional product information, visit our website at [www.brother.com](http://www.brother.com)

## IMPORTANT SAFETY INSTRUCTIONS

### Symbols Used in This Document

The following symbols are used in this document.

 <b>CAUTION</b>	Failure to observe instructions with this marking may result in serious injuries.
---	---

## TRADEMARKS

IBM is a registered trademark or a trademark of International Business Machines Corporation.

Microsoft and Windows are registered trademarks or trademarks of Microsoft Corporation.

Wi-Fi Protected Setup(WPS) is a trademark of Wi-Fi Alliance.

WPA™ and WPA2™ are trademarks of Wi-Fi Alliance®.

Mac, OSX, and Apple are trademarks of Apple Inc., registered in the United States and other countries.

App Store is a service mark of Apple Inc., registered in the United States and other countries.

Each company whose software title is mentioned in this manual has a Software License Agreement specific to its proprietary programs.

All other brands and product names mentioned in this manual are registered trademarks of their respective companies. However, the explanations for markings such as ® and ™ are not described within the text.

## CONTENTS

INTRODUCTION .....	1
IMPORTANT NOTICE .....	1
IMPORTANT SAFETY INSTRUCTIONS .....	1
Symbols Used in This Document .....	1
TRADEMARKS .....	1
MACHINE FEATURES .....	3
Devices That Can Connect to This Machine .....	3
About This Manual .....	3

## 1 GETTING STARTED.....4

PARTS AND FUNCTIONS .....	4
Unit Descriptions - Front .....	4
Unit Descriptions - Rear .....	4
Unit Descriptions - Operation Panel .....	5
Included Accessories .....	5
TURN ON THE MACHINE .....	6
Removing the Transport Packing Materials .....	6
Turning On/Off the Machine .....	6
DesignNCut Manager WINDOWS .....	7
SETTINGS SCREENS .....	9
Machine Settings .....	9
Auto Shut Down .....	9
DesignNCut Manager Settings .....	10
CONNECTING THE MACHINE AND COMPUTER .....	12
Selecting the Connection Method .....	12
Wireless Connection .....	12
Direct PC Connection Using USB Cable (Windows Only) .....	18
Resetting the Wireless Connection Setup .....	20
Checking the Wireless LAN Settings/Connection Status .....	20
Setting Up Manually .....	21
REGISTER DesignNCut ON ScanNCutCanvas .....	22
FIRST STEPS .....	24
Mat and Material Combinations .....	24
Attaching the material to the mat .....	26
Adjusting the Blade Extension .....	32
Installing and Uninstalling the Holder .....	34

## 2 BASIC OPERATIONS.....35

PATTERN CUTTING .....	35
Tutorial 1 - Cutting Patterns .....	35

## 3 ADVANCED OPERATIONS .....41

DRAWING FUNCTIONS .....	41
Drawing .....	41
Using Drawing Functions to Fill Patterns/Make Outlines Thicker .....	43
Cutting Around Drawings .....	45

CaptureMat FUNCTION .....	48
Tutorial 2 - Cutting Photographed Material .....	48

## 4 APPENDIX .....51

CONSUMABLES .....	51
Replacement Criteria .....	51
Replacing the Blade .....	51
CARE AND MAINTENANCE .....	53
Cleaning .....	53
Adjusting the Mark Sensors .....	55
TROUBLESHOOTING .....	56
Finding the Wireless LAN Security Information (Network Name (SSID) and Network Password (Key)) .....	56
If the Machine Stops Operating Correctly .....	56
ERROR MESSAGES .....	59
Cutting Machine Error .....	59
DesignNCut Manager Error .....	61
UPDATING THE SOFTWARE .....	66
Update Procedure Using DesignNCut Manager .....	66
Update Procedure Using Computer .....	66
OPTIONAL ACCESSORIES .....	67
PRODUCT SPECIFICATIONS .....	67
INDEX .....	68

## MACHINE FEATURES

With this machine, you can cut out or draw patterns created in ScanNCutCanvas and sent to it using DesignNCut Manager (DesignNCut application for operation options). ScanNCutCanvas is an online service that allows you to use a Web browser to download, edit and create cutting or drawing pattern data for the ScanNCut and DesignNCut cutting machines.



1. **Install DesignNCut Manager (DesignNCut application for operation options).**  
If you haven't downloaded the DesignNCut Manager application please go to:  
Windows, OS X (Mac): <http://s.brother/caqaa/>  
iOS (App Store): <http://s.brother/caqab/>  
Android (Google Play): <http://s.brother/caqac/>
2. **Machine network settings**  
Wireless network connection.....P. 12  
USB cable connection.....P. 18
3. **Register the cutting machine with ScanNCutCanvas.....P. 22**  
\* You must register with ScanNCutCanvas first.
4. **Send patterns to the machine and cut them out.....P. 35**

**ScanNCutCanvas website:** <http://ScanNCutCanvas.Brother.com/>

## Devices That Can Connect to This Machine

### ■ Computers

- Compatible operating systems:  
Windows 7 SP1, Windows 8.1, Windows 10  
OS X 10.10 or later  
\* For additional operating system information, visit our website (<http://s.brother/cpqaa/>).
- Compatible models:  
IBM PC or compatible computer that is wireless LAN-compatible or originally equipped with a USB port


### ■ Mobile Devices

Compatible operating systems:  
iPhone, iPad : iOS 9 or later  
Android : 5 or later  
\* For additional operating system information, visit our website (<http://s.brother/cpqaa/>).

## About This Manual

The icons at the beginning of each step indicate the following operation information.

: Operation performed on the machine

: Operation performed in DesignNCut Manager (DesignNCut application for operation options)

: Operation performed in ScanNCutCanvas

: Message displayed on the machine

### Memo

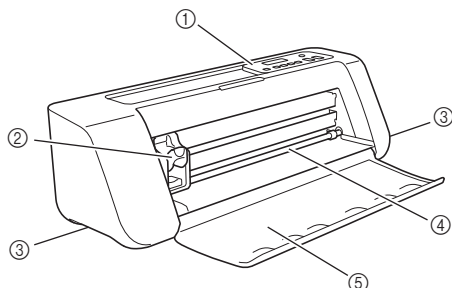
- The machine and screens shown in this manual may differ from the actual ones.
- This manual provides descriptions for using the computer version of the application.



# Chapter 1 GETTING STARTED

## PARTS AND FUNCTIONS

### Unit Descriptions - Front

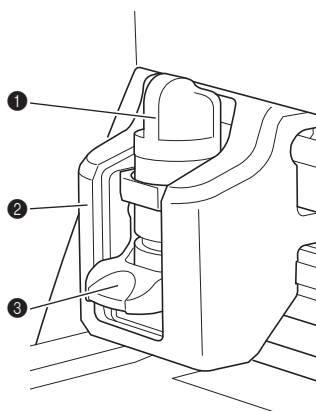


**① Operation Panel**

Allows you to view the current status of the machine and the various menus. Press a button on the operation panel to change the information displayed in the LCD panel. In addition, if there are problems with this machine, the error message relating to the problem is displayed. For details on the error messages, see "ERROR MESSAGES" on page 59.

**② Carriage**

Moves the installed holder for cutting or drawing.



**① Holder**

Installs in the carriage to cut or draw on craft paper or fabric. Use the holder designed specifically for cutting or drawing.

**② Holder Guide**

The guide secures the holder.

**③ Holder Lock Lever**

Releases the holder when the lever is raised. Locks the holder when the lever is lowered.

**③ Grips**

Grasped when moving the machine.

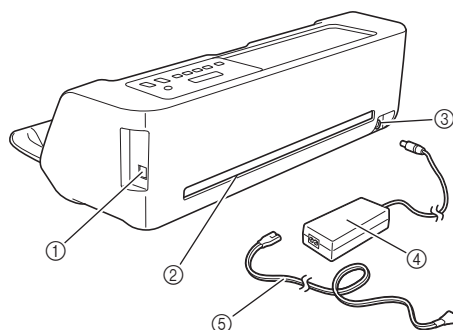
**④ Feed Slot Roller**

Feeds in or out a mat. The mat is fed by the feed rollers on both sides.

**⑤ Front Tray Cover**

Protects the feed rollers, carriage and holder. Open the cover while the machine is operating.

### Unit Descriptions - Rear



**① USB port (for PC Connectivity)**

When a wireless network is not available, use a USB cable to connect the machine to the computer. For Computers and Operating Systems, see "Devices That Can Connect to This Machine" on page 3.

**② Slot**

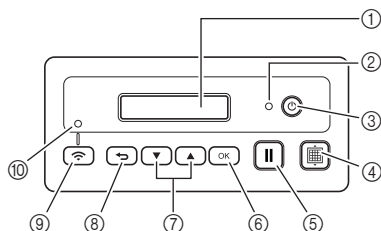
Allows a mat to be fed back and forth during an operation. Do not place any objects near the slot that would prevent the mat from being fed out.

**③ DC Power Jack**

**④ AC Adapter**

**⑤ AC Power Cord**

## Unit Descriptions - Operation Panel



### ① LCD Panel

Displays the current settings, instructions for performing operations and error messages. Long messages scroll in the LCD.

### ② Power indicator

Lights up when the machine is turned on, and flashes when the machine enters the sleep mode (power-saving mode).

### ③ Power Button

Turns the machine on/off.

### ④ Feed Button

Feeds the loaded mat in to or out from the feed slot. Be sure to press this button to feed the mat when loading or unloading it.

### ⑤ Pause/Stop Button

Stops cutting, drawing and other operations.

### ⑥ OK Button

Applies the displayed setting or finishes the operation.

### ⑦ Select Button

Display a menu or make a selection.

### ⑧ Back Button

Cancels the changes made to a setting or returns to the previous screen.

### ⑨ Wireless LAN Connect Button

Used to connect to a wireless network when using the push button method.

### ⑩ Wireless LAN Connect light

Lights up when connected to a wireless network.



### Memo

- For Wireless LAN Connection, once the machine has an established wireless network connection, the machine will automatically reconnect to the same access point/router that has been established. It will take about few seconds to few minutes depending on network environment before the wireless LAN connect light turns on. Please wait until the connect light turns on without pressing any buttons on the machine.

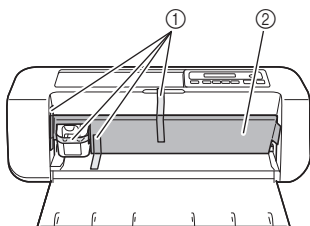
## Included Accessories

For details on the included accessories, refer to the "Included Accessories" insertion.

## TURN ON THE MACHINE

### Removing the Transport Packing Materials

Before turning on the machine, remove the shipping tape and the cardboard shock-absorbing material.



- ① Shipping tape
- ② Cardboard shock-absorbing material

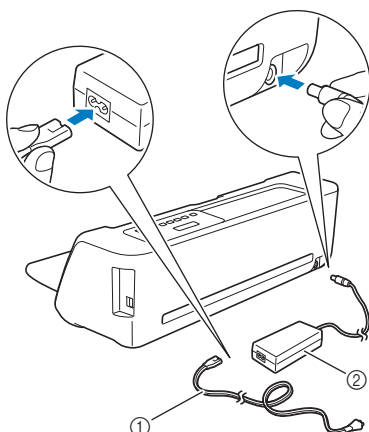


#### Note

- If the packing materials were removed after the machine was turned on, turn the machine off, then on again. Continuing to use the machine without restarting it may result in incorrect operation.

### Turning On/Off the Machine

- 1 Connect the power cord to the AC adapter, and then connect the AC adapter to the machine.



- ① Power cord
- ② AC adapter

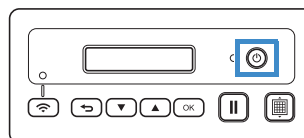


#### Memo

- When using the AC adapter, untie the bundled cord.


- 2 Plug the power cord into an electrical outlet.

- 3 Press  in the operation panel.



#### Note

- The carriage and mat move to their initial positions. Be sure to keep your hands away from the carriage.

- 4 To turn off the machine, press  in the operation panel.

- 5 Unplug the power cord from the electrical outlet.

- 6 Disconnect the AC adapter from the machine, and then disconnect the power cord from the AC adapter.



#### Note

- Do not wind the AC adapter cable around the adapter or bend the cable, otherwise the cable may be damaged.

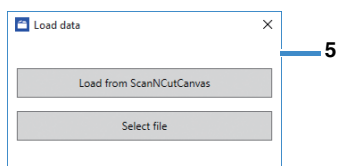
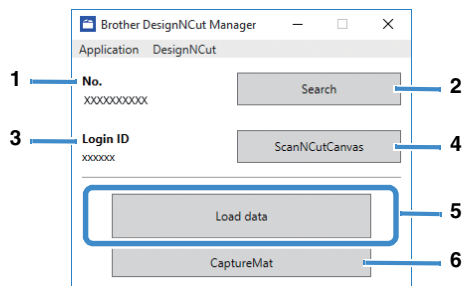


# DesignNCut Manager WINDOWS

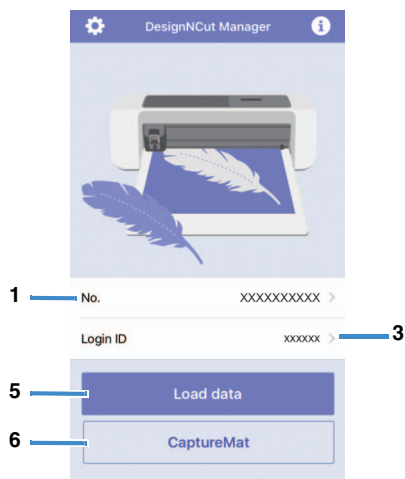
This section describes the windows of the dedicated control application used to cut out or draw patterns.

## ■ Main Window

### Computer

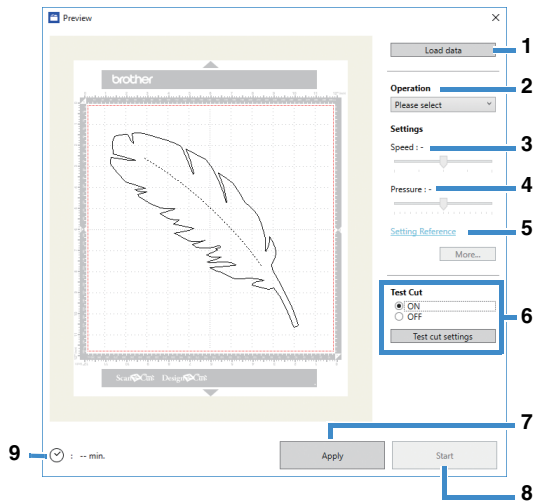


### Mobile device

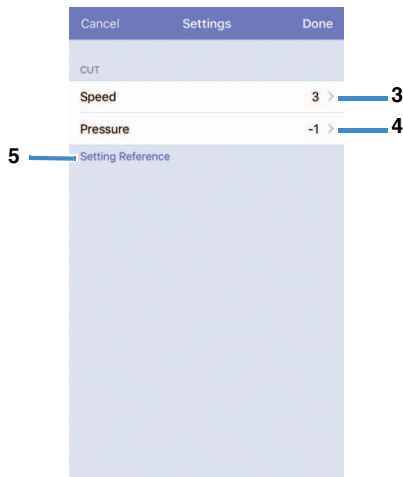
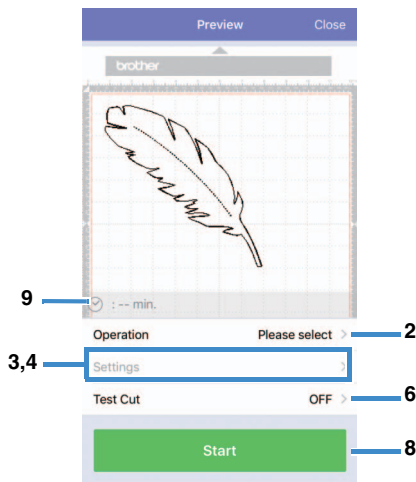


1. **No.**  
Displays the machine number of the connected machine.
2. **Search**  
Searches for connected machines.  
\* With the mobile device version, tap [No.] (1) to search for a machine.
3. **Login ID**  
Displays the ScanNCutCanvas user ID used for connecting to ScanNCutCanvas.
4. **ScanNCutCanvas**  
Displays the window for registering with ScanNCutCanvas.
5. **Load data**  
Selects the method for importing pattern data. Click to display a window for selecting how to import the data.  
\* With the mobile device version, a preview screen for the pattern sent to ScanNCutCanvas appears.
6. **CaptureMat**  
Using ScanNCutCanvas create pattern data from an image taken with a camera.

# Preview Window Computer



## Mobile device



### 1. Load data

Imports cutting/drawing patterns from ScanNCutCanvas or a computer.

### 2. Operation

Select [Cut] or [Draw] from the drop-down list.

- \* Other settings may appear in the drop-down list if a separately sold accessory kit is detected.
- \* With the mobile device version, tap [Operation] to display a screen for selecting [Cut] or [Draw].

### 3. Speed

With the slider, adjust the speed for cutting or drawing.

- \* With the mobile device version, tap [Settings] to display a settings screen.

### 4. Pressure

With the slider, adjust the pressure for cutting or drawing.

- \* With the mobile device version, tap [Settings] to display a settings screen.

### 5. Setting Reference

Displays a list of various settings. Refer to this table before changing the settings.

### 6. Test Cut

Select [ON] or [OFF].

If [ON] is selected, [Test cut settings] will be available and can be clicked to display a window allowing detailed settings for trial cutting to be selected. For details on displaying the window, see "Trial Cutting" on page 37.

- \* With the mobile device version, tap [Test Cut] to display a settings screen.

### 7. Apply

Applies the settings that were either selected or changed.

### 8. Start

Starts cutting or drawing. To stop the operation, see "Cutting the Pattern" on page 39.




### 9. min.

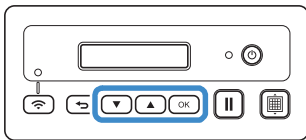
Displays the cutting/drawing time.

## SETTINGS SCREENS

Settings for various functions can be selected or changed.

### Machine Settings

Press  or  in the operation panel to display the settings screen. After changing the settings, press  to apply.



#### ■ 1. Network

##### 1. WLAN Enable

Select whether or not to connect to the wireless network.

##### 2. Setup Wizard

Uses a wizard for manually entering the network password (key) for the detected network name (SSID) to connect to the wireless network from this machine.

##### 3. WAW

Uses the dedicated application “WLAN Assistant Wizard” to connect to the wireless network from a computer.

##### 4. WAW <USB>

Uses the dedicated application “WLAN Assistant Wizard” to retrieve the wireless LAN settings file from the computer connected by the USB cable, then connect to the wireless network.

##### 5. Others


Displays the following parameters for other wireless network settings.

1. **TCP/IP:** TCP/IP settings can be manually entered.

2. **MAC Address:** Displays the MAC address.

3. **SSID:** Displays the network SSID when a wireless network connection is established.

4. **Network Reset:** Resets all network settings to their defaults. When the following message appears, press

 to select [Yes], and then turn the machine off, then on again.



Reset Network?

▼Yes ▲No

#### ■ 2. Machine Info

##### 1. No.

Displays the machine number for this machine.

##### 2. Ver.

Displays the version of this machine's software.

##### 3. Name

Displays the name that was specified for the machine connected to DesignNCut Manager (DesignNCut application for operation options).

#### ■ 3. Basic Setup

##### 1. Language

Select the machine's display language.

##### 2. Panel Contrast

Adjust the brightness of the LCD.

##### 3. Mark Sensor

In CaptureMat function, the cutting position can be manually adjusted if it has shifted.



#### Memo

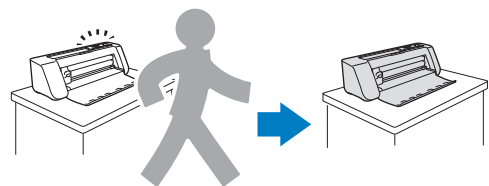
- “\*” appears to the right of the selected item.

#### ■ 4. Machine No.

Displays the machine number for this machine.

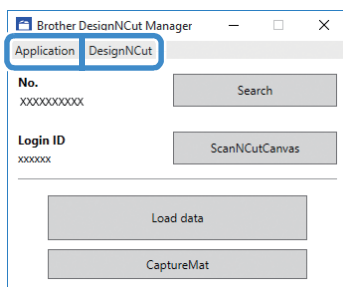
### Auto Shut Down

If the machine is not used for a specified length of time, it will automatically turn off. The length of time until the machine turns off can be specified in the Settings dialog box of DesignNCut Manager (DesignNCut application for operation options). For details on specifying the settings, see “DesignNCut Manager Settings” on page 10.



## DesignNCut Manager Settings

Click [Application] or [DesignNCut] in the main window to display the corresponding menu.




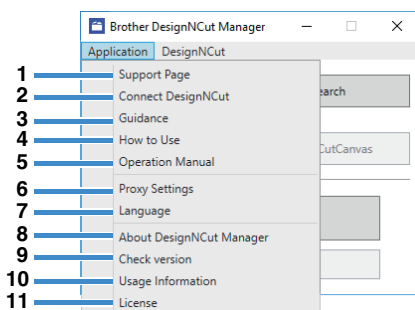
### ■ [Application] Menu

Settings for displaying DesignNCut Manager can be specified.



#### Memo

- With the mobile device version, tap  in the upper-right corner of the screen to display the menu.



#### 1. Support Page

Displays the website for the Brother Solutions Center.

#### 2. Connect DesignNCut

Displays the connection procedures.

#### 3. Guidance

Displays the setup procedures, from specifying network connection settings to registering with ScanNCutCanvas.

#### 4. How to Use

Displays overview how to use DesignNCut Manager and the machine.

#### 5. Operation Manual (PC only)

Displays the Operation Manual.

#### 6. Proxy Settings (PC only)

Manually specify the proxy settings.

#### 7. Language (PC only)

Displays the application's language selections.

#### 8. About DesignNCut Manager (PC only)

Displays information on the control application.

#### 9. Check version

Displays the version information.

#### 10. Usage Information

Displays the usage information.

#### 11. License


Displays information on the software license.

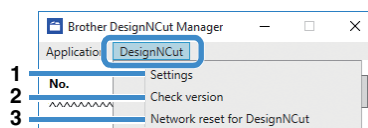
### ■ [DesignNCut] Menu

Settings can be specified for the various operations available when DesignNCut Manager and the machine are connected.



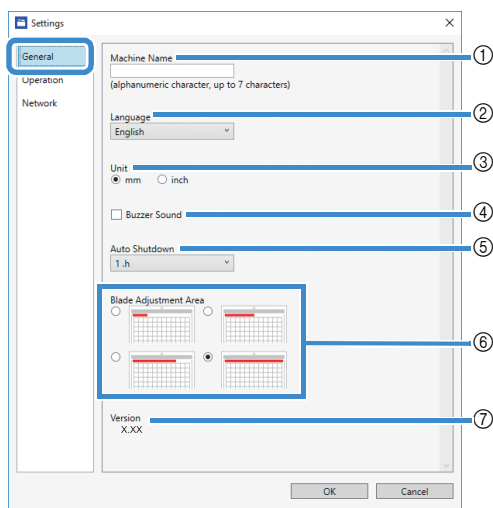
#### Memo

- With the mobile device version, tap  in the upper-left corner of the screen to display the menu.



#### 1. Settings (General)

Click [Settings], then [General]. After specifying the desired settings, click [OK] to apply the settings.



- You can specify a name for the connected machine.
- Select the machine's display language.
- Select the measurement units displayed in the windows.
- Select whether or not an operation sound is produced, for example, when a button on the machine is pressed.
- Select the length of time that the machine is not used until it automatically turns off. If the machine is not used for 20 minutes, regardless of the specified length of time, it will enter the sleep mode, and the power indicator flashes.

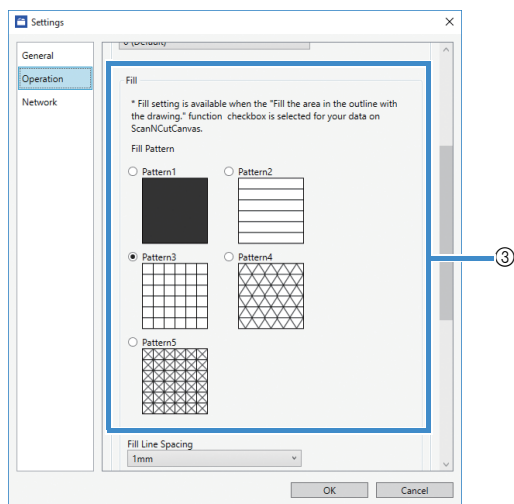
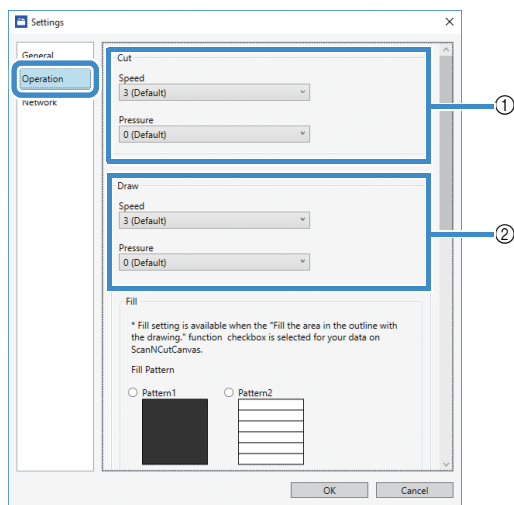
- ⑥ Select from 1/4, 2/4, 3/4 or all of the cutting area to be used for blade adjustment. Before cutting out a pattern, this machine performs an automatic blade adjustment, which adjusts the direction of the blade outside of the adhesive area of the mat.

- ⑦ Displays the version of this machine's software.

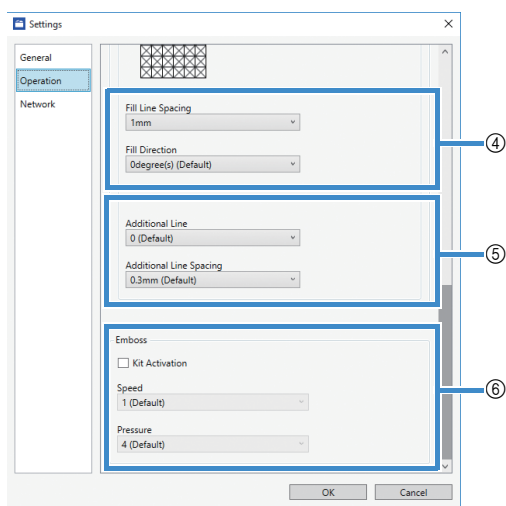
## 1. Settings (Operation)

Click [Settings], then [Operation].

After specifying the desired settings, click [OK] to apply the settings.



- ① Adjust the speed and pressure for cutting. For details on the appropriate cutting pressure, see "Cutting Settings" on page 32.
- ② Adjust the speed and pressure for drawing. For best results, adjust the drawing pressure to the appropriate setting. Drawing with pressure that is too strong may damage the pen tip.
- ③ Select the design that will be used to fill patterns. For details, see "Using Drawing Functions to Fill Patterns/Make Outlines Thicker" on page 43.

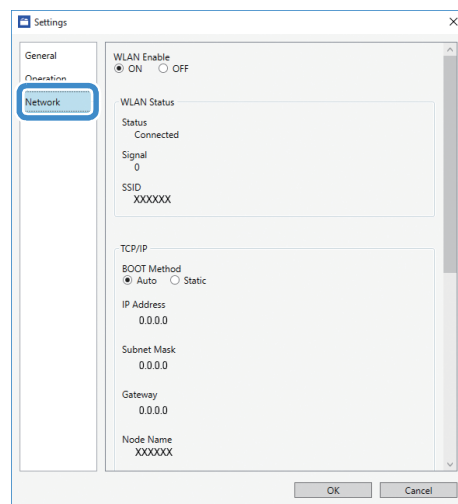


- ④ With [Fill Line Spacing], adjust the spacing of the lines filling the pattern. With [Fill Direction], adjust the direction of the lines filling the pattern.
- ⑤ With [Additional Line], specify the number of lines to be added. With [Additional Line Spacing], specify the spacing of the lines to be added.
- ⑥ When a separately sold accessory kit is used, select this check box to enable its functions.

## 1. Settings (Network)

Click [Settings], then [Network].

After specifying the desired settings, click [OK] to apply the settings. For details on the network settings, see "Setting Up Manually" on page 21.



## 2. Check version

Displays the status of the machine's software.

- \* This does not appear when the machine is connected with a USB cable.

## 3. Network reset for DesignNCut

Initializes the wireless network settings. For details on specifying the settings, see "Resetting the Wireless Connection Setup" on page 20.



### Selecting the Connection Method

#### ■ Step 1

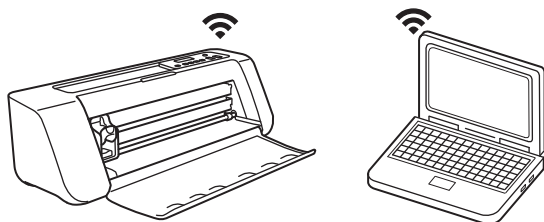
Open DesignNCut Manager (DesignNCut application for operation options), installed on the computer.

#### ■ Step 2

Connect the machine and the computer with the DesignNCut Manager (DesignNCut application for operation options).

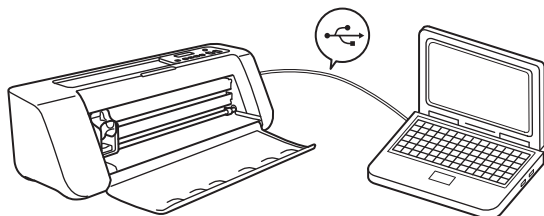
##### When using a wireless connection

⇒ Continue to "Wireless Connection" on page 12.



##### When using a USB cable

⇒ Continue to "Direct PC Connection Using USB Cable (Windows Only)" on page 18.



#### Memo

- For the mobile device version, follow the on-screen instructions to specify the settings.

### Wireless Connection

Select the connection method to the wireless network.

- Using Wireless Network Name (SSID) & Network Password (Key).....13
- Using Router's WPS button.....15
- Using WLAN Assistant Wizard.....16
- Using WLAN Assistant Wizard with USB Cable.....17

#### ■ Wireless Connection Conditions

The wireless network connection complies with IEEE 802.11 n/g/b standards and uses the 2.4 GHz frequency.

#### Memo

- A wireless network cannot be set up with WPA/ WPA2 Enterprise. For the authentication methods that this machine is compatible with, refer to "Err-03" on P. 60.

## ■ Using Wireless Network Name (SSID) & Network Password (Key)

Select your Wireless Network Name (SSID) and input the Network Password (Key) of your wireless LAN access point/router on your DesignNCut machine.

In order to connect the machine to a wireless network, the security information (SSID and network password) for your wireless LAN access point/router will be required. The network password may also be called a network key, security key or encryption key. First, find your security information and note it below.

Network Name (SSID)	Network Password (Network Key)

### Memo

- The wireless connection cannot be set up if you do not have the security information.
- Where to find the security information:
  - 1) Check your wireless LAN manual for your wireless LAN access point/router.
  - 2) The default SSID may be the manufacturer's name or the model name.
  - 3) If you cannot find the security information, contact the manufacturer of the router, your network administrator or your Internet provider.
  - 4) Some Wireless Network Name (SSID) and Network Password (Key) are case (upper case and lower case) sensitive. Please properly record your information.

**If you have already selected the connection method, please go to step 5**



: Operation performed in DesignNCut Manager

- 1 Click [Start Setup].
- 2 Click [Connect].
- 3 Select [Wireless LAN], and then click [Next].

\* Skip this step for mobile and Mac version.

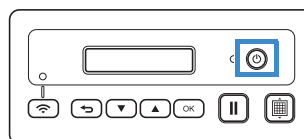
- 4 Select [Use Wireless Network Name (SSID) & Network Password (Key)], and then click [Next].





\* Mobile version will automatically go to the next screen.



: Operation performed on the machine

- 5 Turn off the DesignNCut machine, by pressing .






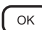
- 6 Press  and the  at the same time, once the power comes on release  while still pressing down .


- 7 When the message [Machine mode?] appears on your LCD, press  to select [WLAN].

- 8 The message, [Turn the machine off, then on again.] will appear on your LCD. Follow the machine's instruction.


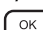
Once your machine is back on, the text [Standby (WLAN)] should display on your LCD.

- 9 Press  to go to [1. Network] and press .




- 10 Press  to go to [2. Setup Wizard] and press .

- 11 When the message [Enable WLAN?] appears on your LCD, press  to select [Yes]. The machine will search for SSID.

\* Give your machine time to search for SSID.

- 12 If you have multiple network names press  to select the SSID (network name) of the wireless network that your PC/Mobile is connected and press .

\* Your network name selection should match the wireless network that your PC is connected.


- 13** Enter your network password (key) using the  or  pressing  after each character. The characters on the DesignNCut LCD are listed in the order below.



When pressing 



0123456789abcdefghijklmnopqrstuvwxyz  
ABCDEFGHIJKLMNOPQRSTUVWXYZ  
!\"#\$%&'()\*+,-./:;<=>?@[\\]^\_





When pressing 

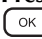
You must go through each one of these until your desired character shows up on the LCD. Press  after each character. To erase an entered character, press .

Make sure that you have the right password and note some password are case (upper case & lower case) sensitive.

Your DesignNCut machine and PC connection must be on the same network.

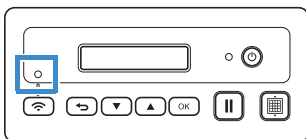
- 14** Press  once you completed entering your password.
- 15** When the message [Apply Settings?] appears on your LCD, press  to select [Yes]. Your machine will connect to WLAN.

\* Give your machine time to connect to your wireless network.

- 16** When the message [Connected to WLAN. Press [OK] button.] appears on your LCD, press  button on your machine.

- 17** The Wireless LAN Connect light will turn on.

\* Give the Wireless LAN Connect light time to turn on.





: Operation performed in DesignNCut Manager


- 18** Go back to DesignNCut Manager and click [Connect].

- 19** Select the machine number and then click [OK].

\* For mobile version, tap [Done].



- To check your machine's number, press  to display the [2. Machine Info] on the machine's LCD, and then press .

When [1. No.] appears on the LCD, press . Your machine's number will be displayed on the machine's LCD.

- 20** When [DesignNCut connection is successful.] appears in the dialog box, click [OK].

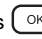
- For mobile version, this dialog box will not appear.
  - Continue the guidance instruction to register a new account on ScanNCutCanvas.
  - Go to "REGISTER DesignNCut ON ScanNCutCanvas" on page 22 to connect your machine to ScanNCutCanvas.



- If Wireless LAN connection failed and the following message appears:



Network Password (Key) error (Err-04). Press [OK] button.

an incorrect network password (key) may have been entered. Press , and then perform the procedure again starting with step 9 of "Using Wireless Network Name (SSID) & Network Password (Key)" on page 13.

- For details on other causes, see "ERROR MESSAGES" on page 59.

## ■ Using Router's WPS button

Use this connection method if your wireless LAN access point/router has a WPS button.

### Memo

- For details on the WPS button, check your wireless LAN manual for your wireless LAN access point/router.

## If you have already selected the connection method, please go to step 5



: Operation performed in DesignNCut Manager

- Click [Start Setup].
- Click [Connect].
- Select [Wireless LAN], and then click [Next].

\* Skip this step for mobile and Mac version.

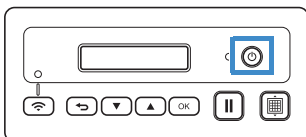
- Select [Use Router's WPS button], and then click [Next].


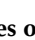
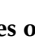

\* Mobile version will automatically go to the next screen.



: Operation performed on the machine

- Turn off the DesignNCut machine, by pressing .



- Press  and the  at the same time, once the power comes on release  while still pressing down .

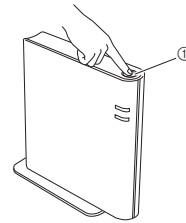
- When the message [Machine mode?] appears on your LCD, press  to select [WLAN].

- The message, [Turn the machine off, then on again.] will appear on your LCD. Follow the machine's instruction.

Once your machine is back on, the text [Standby (WLAN)] should display on your LCD.

- Press your router's WPS button.

Make sure your DesignNCut machine and PC connection are on the same network.

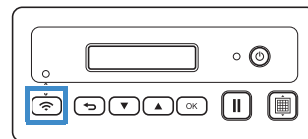



① WPS button

### Memo


- The location of the WPS button differs depending on your device.

- Press  on your DesignNCut machine.

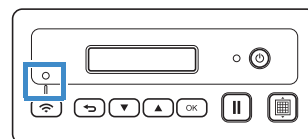


- When the message [Enable WLAN?] appears on your LCD, press  to select [Yes].

\* Give your machine time to connect to your wireless network.

- When the message [Connected to WLAN. Press [OK] button.] appears on your LCD, press  button on your machine.

- The Wireless LAN Connect light will turn on.



: Operation performed in DesignNCut Manager

- Go back to DesignNCut Manager and click [Connect].

- Select the machine number and then click [OK].

\* For mobile version, tap [Done].



## Note

- To check your machine's number, press to display the [2. Machine Info] on the machine's LCD, and then press .

When [1. No.] appears on the LCD, press . Your machine's number will be displayed on the machine's LCD.

### 16 When [DesignNCut connection is successful.] appears in the dialog box, click [OK].

- \* For mobile version, this dialog box will not appear.
  - ▶ After completing the network connection, see "REGISTER DesignNCut ON ScanNCutCanvas" on page 22 to connect your machine to ScanNCutCanvas.

## ■ Using WLAN Assistant Wizard

Apply wireless LAN settings of your computer to DesignNCut machine by using the wizard to connect your computer to WLAN.

### If you have already selected the connection method, please go to step 5

To perform this setting, your computer's firewall must be turned off.



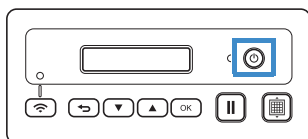
: Operation performed in DesignNCut Manager

- Click [Start Setup].
- Click [Connect].
- Select [Wireless LAN], and then click [Next].
- Select [Use WLAN Assistant Wizard], and then click [Next].



: Operation performed on the machine

### 5 Turn off the DesignNCut machine, by pressing .



- Press and the at the same time, once the power comes on release while still pressing down .
- When the message [Machine mode?] appears on your LCD, press to select [WLAN].

8

### The message, [Turn the machine off, then on again.] will appear on your LCD. Follow the machine's instruction.

Once your machine is back on, the text [Standby (WLAN)] should display on your LCD.



: Operation performed in DesignNCut Manager

9

### Go back to DesignNCut Manager and click [Wizard] and how to use WLAN Assistant Wizard dialog box appears. Follow the on-screen instruction to complete the setup.



: Operation performed on the machine

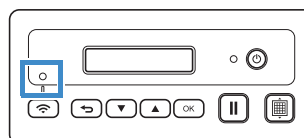
10

### When the message [Connected to WLAN. Press [OK] button.] appears on your LCD, press button on your machine.

11

### The Wireless LAN Connect light will turn on.

- \* Give the Wireless LAN Connect light time to turn on.



: Operation performed in DesignNCut Manager

12

### Go back to your PC and then click [OK] to complete the setup.

13

### Select the machine number and then click [OK].



## Note

- To check your machine's number, press to display the [2. Machine Info] on the machine's LCD, and then press .

When [1. No.] appears on the LCD, press . Your machine's number will be displayed on the machine's LCD.

- 14** When [DesignNCut connection is successful.] appears in the dialog box, click [OK].

- ▶ After completing the network connection, see "REGISTER DesignNCut ON ScanNCutCanvas" on page 22 to connect your machine to ScanNCutCanvas.

## ■ Using WLAN Assistant Wizard with USB Cable

Apply wireless LAN setting to DesignNCut machine with the wizard by temporarily connecting your machine and your computer with a USB cable\*.

### \* USB cable (sold separately)

- We recommend using a USB 2.0 cable (Type A/B) of 2.0 m or less.



#### Note

- The connectors on the USB cable can only be inserted into a port in one direction. If it is difficult to insert the cable connector, do not insert it with force and check the orientation of the connector.

## If you have already selected the connection method, please go to step **5**



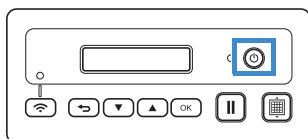
: Operation performed in DesignNCut Manager

- 1** Click [Start Setup].
- 2** Click [Connect].
- 3** Select [Wireless LAN], and then click [Next].
- 4** Select [Use WLAN Assistant Wizard (USB)], and then click [Next].



: Operation performed on the machine

- 5** Turn off the DesignNCut machine, by pressing



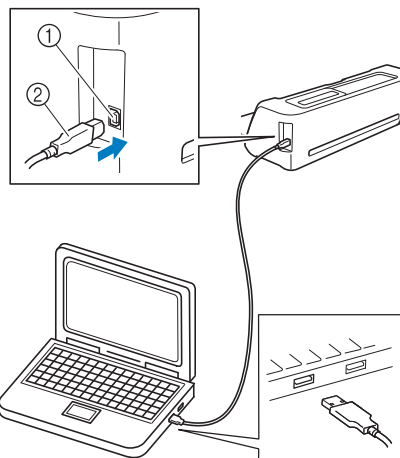
- 6** Press and the at the same time, once the power comes on release while still pressing down .

- 7** When the message [Machine mode?] appears on your LCD, press to select [WLAN].

- 8** The message, [Turn the machine off, then on again.] will appear on your LCD. Follow the machine's instruction.

Once your machine is back on, the text [Standby (WLAN)] should display on your LCD.

- 9** Plug the USB cable connector into the corresponding USB ports on the computer and on the machine.



- ① USB port for a computer
- ② USB cable



#### Note

- USB Cable is sold separately.



: Operation performed in DesignNCut Manager

- 10** Go back to DesignNCut Manager and click [Wizard].
- 11** The WLAN Assistant Wizard starts up. Follow the on-screen instructions to complete the setup.




#### Note

- The default settings for Authentication/Encryption methods are as follows:  
**Authentication methods: WPA/WPA2-PSK**  
**Encryption Mode: AES**

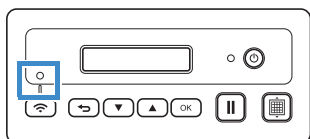
To select the correct method, please check the wireless security information of your wireless access point/router.


: Operation performed on the machine

**12** When the message [Connected to WLAN. Press [OK] button.] appears on your LCD, press  button on your machine.

**13** The Wireless LAN Connect light will turn on.

\* Give the Wireless LAN Connect light time to turn on.





: Operation performed in DesignNCut Manager


**14** Go back to your PC and then click [OK] to complete the setup.

**15** Select the machine number and then click [OK].



#### Note

- To check your machine's number, press  to display the [2. Machine Info] on the machine's LCD, and then press .

When [1. No.] appears on the LCD, press . Your machine's number will be displayed on the machine's LCD.

**16** When [DesignNCut connection is successful.] appears in the dialog box, click [OK].

- ▶ After completing the network connection, see "REGISTER DesignNCut ON ScanNCutCanvas" on page 22 to connect your machine to ScanNCutCanvas.

## Direct PC Connection Using USB Cable (Windows Only)

With a USB cable, directly connect the machine and the computer with DesignNCut Manager (DesignNCut application for operation options).

**If you have already selected the connection method, please go to step **4****



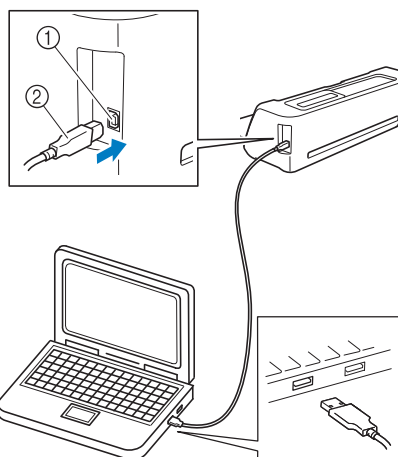
: Operation performed in DesignNCut Manager

- 1** Click [Start Setup].
- 2** Click [Connect].
- 3** Select [USB Cable], and then click [Next].



: Operation performed on the machine

**4** Plug the USB cable connectors into the corresponding USB ports on the computer and on the machine.



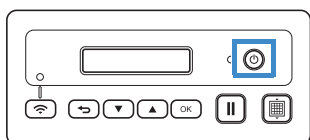
- ① USB port for a computer
- ② USB cable








#### Note

- USB Cable is sold separately.
- This connection is for Windows PC only and not available for Mac computers.

- 5 Turn off the DesignNCut machine, by pressing .



- 6 Press  and the  at the same time, once the power comes on release  while still pressing down .

- 7 When the message [Machine mode?] appears on your LCD, press  to select [USB].

- 8 The message, [Turn the machine off, then on again.] will appear on your LCD. Follow the machine's instruction.

Once your machine is back on, the text [Standby (USB)] should display on your LCD.





: Operation performed in DesignNCut Manager

- 9 Go back to DesignNCut Manager and click [Connect].
- 10 When [DesignNCut connection is successful.] appears in the dialog box, click [OK].
- 11 Click [ScanNCutCanvas] to access to <http://ScanNCutCanvas.Brother.com> to register a new account.
- 12 After registering, click [Next].
- ▶ All settings have been completed. Click [How to Use] on the DesignNCut Manager to see tutorial for the basic usage.
- 13 Click [Close].



## Note


- When connecting the machine and computer with a USB cable, the AutoPlay dialog box may appear repeatedly. To not display the dialog box, change the AutoPlay settings as described below.
  - Windows 7  
Click  > [Control Panel] > [Hardware and Sound] > [AutoPlay]. Uncheck [Use AutoPlay for all media and devices], then click [Save] to apply the settings.
  - Windows 8.1  
Move your mouse to the lower right corner of your desktop. When the menu bar appears, click [Settings] > [Control Panel] > [Hardware and Sound] > [AutoPlay]. Select [Take no action] from the [Removable drive] drop-down list, then click [Save] to apply the settings.
  - Windows 10  
Click  > [Windows System] > [Control Panel] > [Hardware and Sound] > [AutoPlay]. Select [Take no action] from the [Removable drive] drop-down list, then click [Save] to apply the settings.

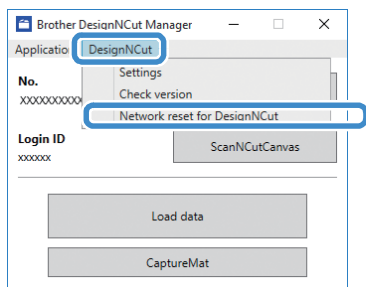


## Resetting the Wireless Connection Setup

- 1 From the [DesignNCut] menu, click [Network reset for DesignNCut].

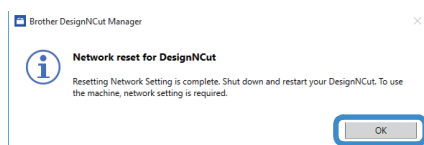
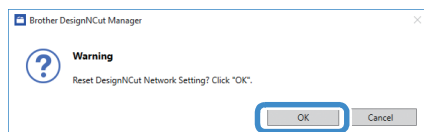
### Memo

- With the mobile device version:  
 → [Network reset for DesignNCut].



- 2 Click [OK] to begin initializing.

- Follow the on-screen instructions to complete the operation.
- See “Wireless Connection” on page 12 to connect to a wireless network.




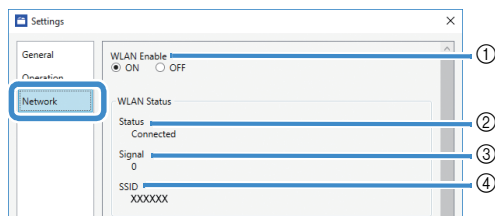
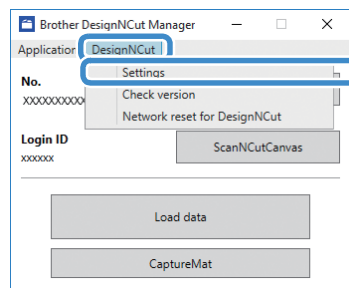
## Checking the Wireless LAN Settings/Connection Status

When a connection to the wireless network cannot be established.

- 1 Click [DesignNCut], then [Settings], and then select [Network].

### Memo

- With the mobile device version:  
 → [Settings] → [Network]



- ① Select whether or not the machine will connect to the wireless network.
- ② Displays the connection status.
- ③ Displays the machine's signal strength as one of four levels.  
The signal strength is indicated by a number.  
0 : No connected (\*When the USB cable connected)  
1 : Weak signal  
2 : Medium signal  
3 : Strong signal
- ④ Displays the SSID of the wireless router that the machine is connected to.

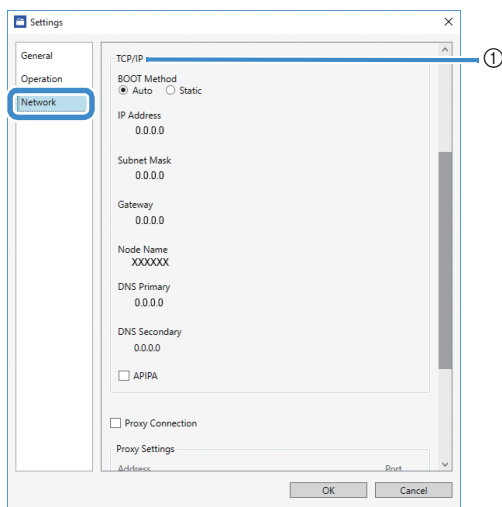
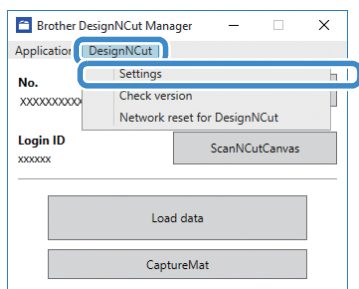
## Setting Up Manually

- 1 Click [DesignNCut] in the main window of DesignNCut Manager, click [Settings], and then select [Network].

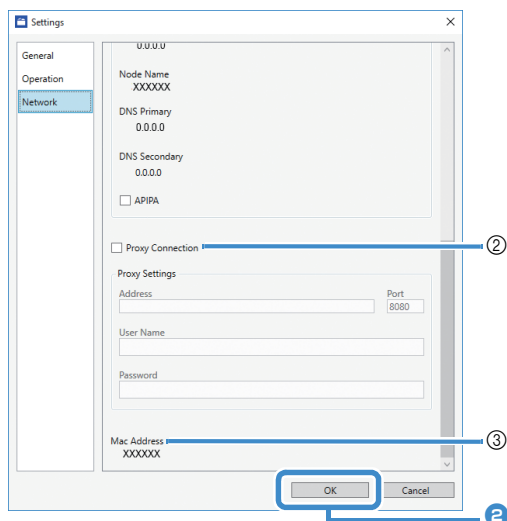
### Memo

- With the mobile device version:

 → [Settings] → [Network]



- ① If [Static] is selected, TCP/IP settings can be manually entered.



- ② Use when proxy settings are required.

- ③ Displays the MAC address.

- 2 After specifying the settings, click [OK].

## REGISTER DesignNCut ON ScanNCutCanvas

After the machine is registered with ScanNCutCanvas (<http://ScanNCutCanvas.Brother.com/>), various editing operations can be performed and data can be transferred.

This section describes the procedure for linking a machine with a specific number to a login ID.

If setup is not completed correctly or an error message appears, see “ERROR MESSAGES” on page 59.

### Note

- A computer or mobile device that can run ScanNCutCanvas and connect to the network is required.
- Before continuing with this procedure, the machine must be connected to the wireless network. If not, see “Wireless Connection” on page 12, and perform the setup.



: Operation performed in DesignNCut Manager

- 1 Click [ScanNCutCanvas] to access to <http://ScanNCutCanvas.Brother.com> to register a new account.

### Note

- If you have a ScanNCutCanvas account for your ScanNCut we recommend creating a new account for DesignNCut.

- 2 After registering, click [Next].


\* For mobile version, tap .

- 3 Click [Connect].

- 4 Register dialog box will appear. Type in the login ID and password registered with ScanNCutCanvas, and then click [Register].

- 5 When the [ScanNCut Online Settings has been completed.] dialog box appears, click [OK].

- 6 Click [Next].

- \* For mobile version, tap .
- Click [How to Use] on the DesignNCut Manager to see tutorial for the basic usage.

- 7 Click [Close].

### Note

- After the settings have been completed, your machine number and your ScanNCutCanvas login ID will be shown in the DesignNCut Manager's main window.

- First-time users must create a ScanNCutCanvas account.
- If an error occurs while sending or receiving data, see “ERROR MESSAGES” on page 59.

### Memo

- If you registered a new ScanNCutCanvas account for DesignNCut, you can also click [ScanNCutCanvas] in the main window of DesignNCut Manager to display the register dialog box.



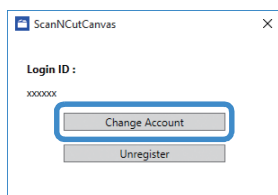
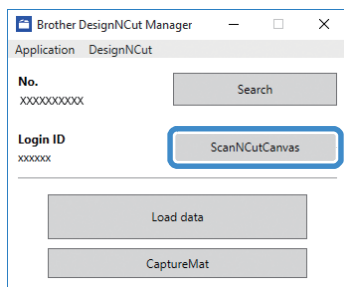
## ■ Changing to a Different ScanNCutCanvas Login ID

- 1 Click [ScanNCutCanvas] in the main window of DesignNCut Manager, and then click [Change Account].

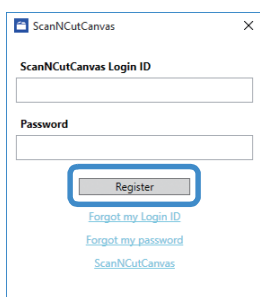


### Memo

- With the mobile device version:  
Main Window→[Login ID]→[Change Account]



- 2 Type in the login ID and password registered with ScanNCutCanvas, and then click [Register].



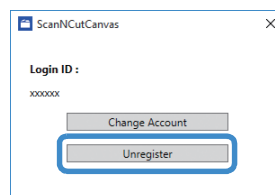
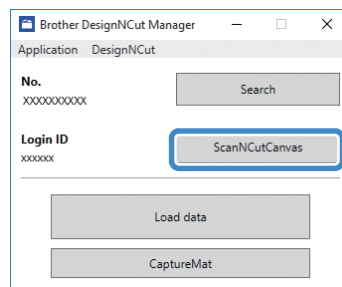
## ■ Deleting a Registered ScanNCutCanvas Login ID

- 1 Click [ScanNCutCanvas] in the main window of DesignNCut Manager, and then click [Unregister].



### Memo

- With the mobile device version:  
Main Window→[Login ID]→[Unregister]



## FIRST STEPS

The following procedures describe basic operations, from preparing the materials to cutting.

### Mat and Material Combinations

The recommended material thickness is 0.1 mm to 0.3 mm for paper and 0.2 mm to 1.5 mm for fabric. Refer to the following table for the appropriate mat and sheet for fabric cutting according to the material to be used for cutting or drawing. Depending on the machine model, some accessories listed in the chart may not be included. In that case, they must be purchased separately.

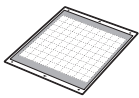
Material and its thickness			Mat		Sheet for fabric cutting	
			Standard mat	Low tack adhesive mat	Iron-on fabric appliqué contact sheet (white backing)	High tack adhesive fabric support sheet
Paper	Printer paper	80 g/m <sup>2</sup> (0.1 mm)	✗	✓		
	Scrapbook paper (thin)	120 g/m <sup>2</sup> (0.15 mm)		✓		
	Scrapbook paper (medium-thick)	200 g/m <sup>2</sup> (0.25 mm)	✓	✓*		
	Cardstock (thin)	200 g/m <sup>2</sup> (0.25 mm)	✓	✓*		
	Cardstock (medium-thick)	280 g/m <sup>2</sup> (0.35 mm)	✓	✓*		
	Vellum, tracing paper	0.07 mm		✓		
	Poster board (thin)	280 g/m <sup>2</sup> (0.35 mm)	✓	✓		
	Poster board (thick)	400 g/m <sup>2</sup> (0.5 mm)	✓	✓		
Fabric	Thin cotton fabric (for quilt piece)	0.25 mm	✓			✓
	Thin cotton fabric (except for quilt piece)	0.25 mm	✓		✓	
	Flannel (for quilt piece)	0.6 mm	✓			✓
	Flannel (except for quilt piece)	0.6 mm	✓		✓	
	Felt	1 mm	✓		✓	
	Denim 14 oz	0.75 mm	✓		✓	
Others	Plastic sheet (PP)	0.2 mm	✓			
	Vinyl	0.2 mm	✓			
	Magnet	0.3 mm	✓			
	Sticker or seal	0.2 mm	✓	✓		

✓\* When cutting smooth paper



#### Note

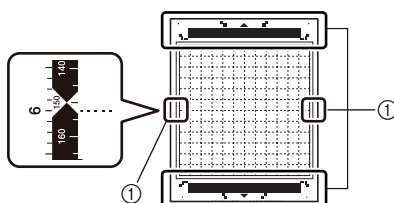
- This chart is only a guide, always test material and mat strength prior to beginning project.

 <b>Mat</b>		<b>Sheet for fabric cutting</b> Use one of the following two sheets for fabric cutting when cutting fabric.	
<b>Standard mat</b>	High adhesive strength mat; use with cutting fabric. * Use the low tack adhesive mat with copy paper and smooth paper. Since the standard mat has a high adhesive strength, materials may remain stuck to the mat, causing the mat to become unusable.	<b>Iron-on fabric appliqué contact sheet (white backing)</b> <b>(See page 27)</b>	<ul style="list-style-type: none"> <li>Reinforces the fabric so that various patterns can be cut out.</li> <li>The original texture may change because it remains attached to the back of fabric.</li> <li>For use with the standard mat.</li> <li>Do not place fabric backed with iron-on contact sheet directly onto a mat with high tack fabric support sheet.</li> </ul>
<b>Low tack adhesive mat</b>	Low adhesive mat; suitable for copy paper and smooth paper.	<b>High tack adhesive fabric support sheet</b> <b>(See page 29)</b>	<ul style="list-style-type: none"> <li>For best results when cutting fabric, attach the high tack adhesive fabric support sheet to the standard mat in order to increase the strength of the adhesive.</li> <li>Depending on the shape, the pattern may not be cleanly cut.</li> <li>We recommend attaching it to a new cutting mat.</li> </ul>



### Note

- Avoid using materials covered with a decorative layer that can easily peel off, such as lamé or foil. Otherwise, the peeled-off layer may attach to rollers or sensors during operation, resulting in damage to the machine or to the cutting blade.
- Do not affix masking tape, etc., over the scanning marks. Otherwise, the mat may not be correctly recognized or images may not be correctly scanned.



① Scanning marks



### Memo

- When using a 12" × 12" (305 mm × 305 mm) mat, the maximum work area for cutting/drawing is 11 3/4" × 11 3/4" (296 mm × 298 mm).
- When using an optional 12" × 24" (305 mm × 610 mm) mat, the maximum work area for cutting/drawing is 11 3/4" × 23 3/4" (296 mm × 603 mm).
- Some fabrics with uneven surfaces can be cut if turned upside down.

## Attaching the material to the mat

After preparing the mat and sheet (when cutting fabric) appropriate for the material, attach the material to the mat. For the mat and sheet appropriate for the material, see “Mat and Material Combinations” on page 24.

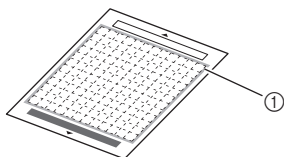


### Note

- Do not discard the protective sheet peeled off the mat; save it for later use.
- To maintain the adhesive strength, attach the protective sheet to the adhesive side of the mat after use.
- When the mat is not being used, clean the adhesive side and affix the protective sheet before storing it. For details, see “Cleaning the Mat” on page 53.

Material	Page
Paper	Page 26
Fabric (Other Than for Quilt Piecing)	Page 27
Fabric (for Quilt Piecing)	Page 29

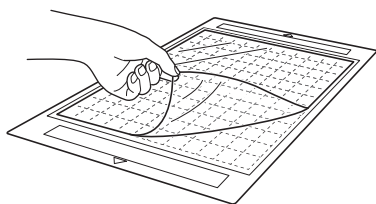
## ■ Paper



① Mat suitable for the material

## □ Attaching the Material (Paper)

- 1 Peel off the protective sheet from the adhesive side of the mat.

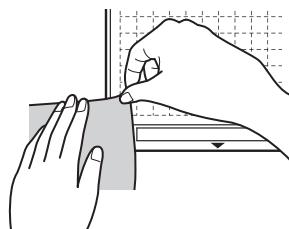


- 2 Test attaching the material.

Before attaching the material to the mat, use a corner of the adhesive side of the mat to test attaching it. Check for the following when testing attaching the material.

- The color does not come off the material when it is peeled off.
- The material is not torn or deformed when it is peeled off.

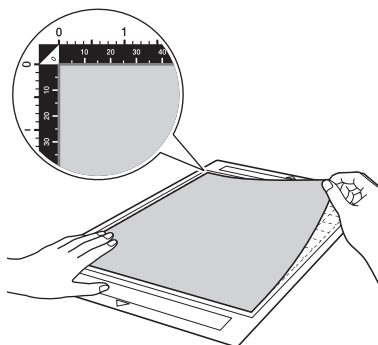
If any problems occur when testing attaching, use different material.



### Note

- Use the low tack adhesive mat with copy paper and smooth paper. Since the standard mat has a high adhesive strength, materials may remain stuck to the mat, causing the mat to become unusable.

- 3 Attach the material to the mat's adhesive side.



### Note

- Place the material within the attaching area (grid area) on the adhesive side. If the material extends from the attaching area, it may be damaged by the feed rollers when the mat is fed.

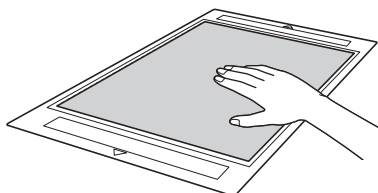


### Memo

- The mat does not have a top and bottom. It can be inserted into the feed slot from either end.

- 4** Firmly attach all of the material to the mat so that there are no wrinkles and no part can curl off.

- Otherwise, curls in the material may become caught when the mat is inserted.

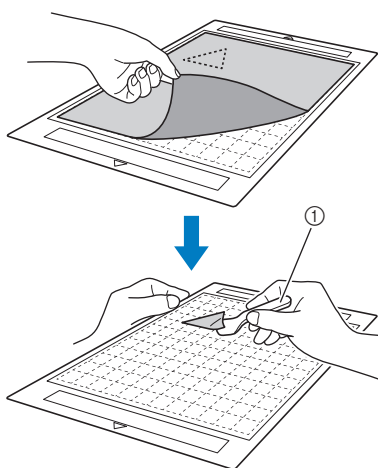


#### Note

- If the mat is dirty, clean it. For details, see "Cleaning the Mat" on page 53.

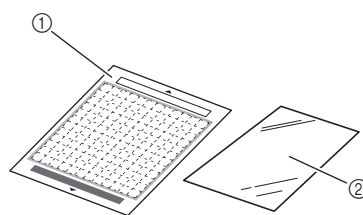
#### □ Peeling Off the Material (Paper)

After cutting the material, use a spatula to slowly peel off the paper.



① Spatula

## ■ Fabric (Other Than for Quilt Piecing)



- ① Standard mat
- ② Iron-on fabric appliqué contact sheet (white backing)

#### □ Attaching Fabric Material (Excluding Quilt Piecing)

Iron the specially designed contact sheet to the back of fabrics (excluding quilt piecing) and then attach them to the standard mat.

The double-faced adhesive type of the iron-on fabric appliqué contact sheet reinforces the fabric and enables any pattern to be cut easily, including appliqués.

The sheet cannot be removed once it has been attached to the back of fabrics.

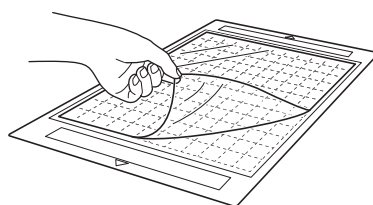
For Quilt Piecing, use the high tack adhesive fabric support sheet and avoid using the iron-on fabric appliqué contact sheet.



#### Note

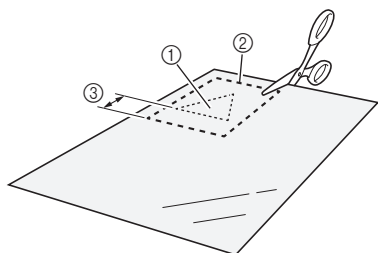
- The contact sheet may not adhere to a fabric surface that is rough that the two surfaces cannot be heat-set to adhere to each other.

- 1** Peel off the protective sheet from the adhesive side of the standard mat.





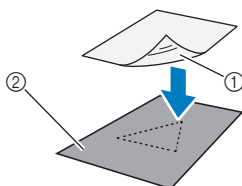
- 2** Cut the iron-on fabric appliqué contact sheet to a size 2 cm (3/4") or more larger than the outline of the pattern to be cut.



- ① Pattern to be cut
- ② Cutting line of sheet
- ③ Margin of 2 cm (3/4") or more

- 3** With the glossy side of the contact sheet facing down, place it on the wrong side of the fabric.

Be sure first to iron the fabric to remove any wrinkles. Before placing the contact sheet on the fabric, make sure that the fabric has been allowed to cool after ironing.

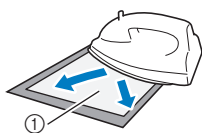


- ① Glossy side of contact sheet
- ② Wrong side of fabric

- 4** Evenly iron the entire contact sheet to affix it to the wrong side of the fabric.

With the iron on a medium temperature setting (140 °C to 160 °C (284 °F to 320 °F)), press each part of the sheet for about 20 seconds (the length of time differs depending on the material).

Be sure to apply pressure on the top of the backing and push out any air between the sheet and fabric.



- ① Backing

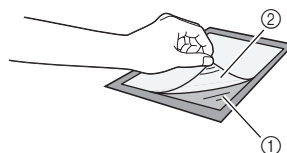


#### Note

- Before attaching the contact sheet to the fabric, use a piece of the sheet to test attaching it. If any problems occur when testing attaching, use different material.
- Leaving the iron in the same place for too long may scorch or melt the material.

- 5** Peel off the backing from the contact sheet.

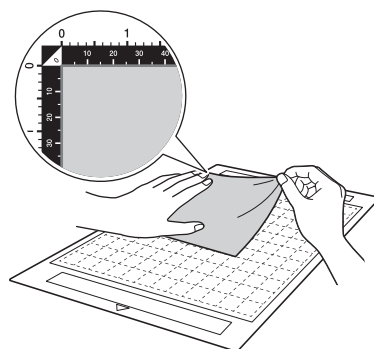
Before peeling off the backing, allow all parts to cool.



- ① Contact sheet
- ② Backing

- 6** With the side of the fabric that the contact sheet is attached to facing down, attach the material to the mat from its edges.

Slowly attach the material from its edges so that no air is trapped between it and the mat.



#### Note

- Place the material within the attaching area (grid area) on the adhesive side. If the material extends from the attaching area, it may be damaged by the feed rollers when the mat is fed.



#### Memo

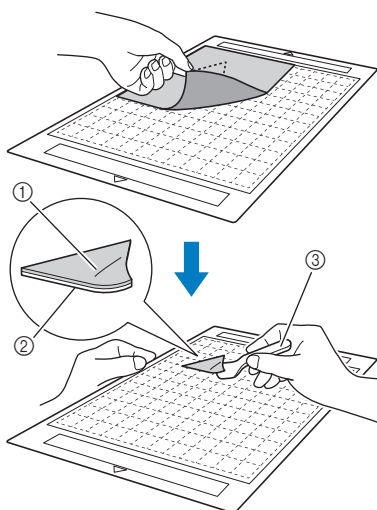
- The mat does not have a top and bottom. It can be inserted into the feed slot from either end.
- Be sure that the vertical grain of the attached fabric runs straight up and down.

- 7** Firmly attach all of the material to the mat so that there are no wrinkles and no part can curl off.

- Otherwise, curls in the material may become caught when the mat is inserted.

## ❑ Peeling Off the Material (Excluding Quilt Piecing)

After cutting the material, use a spatula to peel off the fabric together with the attached contact sheet.



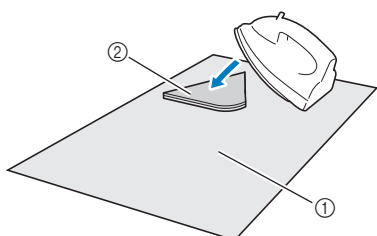
- ① Pattern that was cut out
- ② Contact sheet
- ③ Spatula

### Note

- Do not place anything heated on the fabric attached to a contact sheet. The adhesive will permeate any other pieces of fabric around.

## ❑ Attaching Fabrics With the Double-Sided Adhesive

Place a cutout on a base fabric and apply pressure on the top of the cutout using an iron. (The contact sheet may not adhere well to some fabrics.) Hand or machine stitch to ensure that the cutout stays in place.



- ① Base fabric
- ② Cutout with a contact sheet

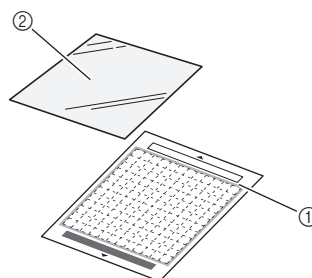
### Note

- Do not wash fabrics attached with a double-sided adhesive contact sheet.
- When attaching fabrics with the double-sided adhesive, iron carefully, being sure that the material and adhesive surfaces are properly heat-set.
- When attaching fabrics of different weights with the double-sided adhesive, first iron the lighter-weight fabric to affix the contact sheet.

## ❑ Notice on Use of Iron-on Fabric Appliqué Contact Sheet

- Store the contact sheet at room temperature and in a location not exposed to high temperatures, high humidity or direct sunlight.

## ■ Fabric (for Quilt Piecing)

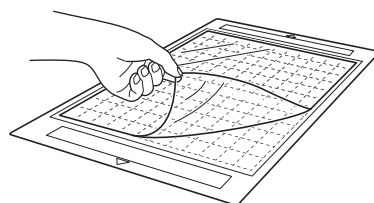


- ① Standard mat
- ② High tack adhesive fabric support sheet

## ❑ Attaching the Material (for Quilt Piecing)

Use the high tack adhesive fabric support sheet to attach fabrics for quilt piecing to the standard mat. These sheets should only be used with patterns that have a seam allowance. The high tack adhesive fabric support sheet can be repeatedly used until their adhesive strength has decreased. (Once the support sheet has been peeled off the mat, it can no longer be used.)

### 1 Peel off the protective sheet from the adhesive side of the standard mat.

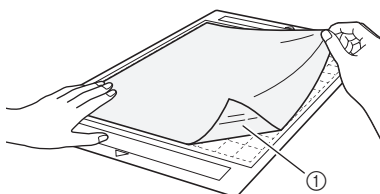


## Note

- Do not discard the protective sheet peeled off the mat; save it for later use.
- To maintain the adhesive strength, attach the protective sheet to the adhesive side of the mat after use.
- When the mat is not being used, clean the adhesive side and affix the protective sheet before storing it. For details, see “Cleaning the Mat” on page 53.

## 2 With the glossy side of the high tack adhesive fabric support sheet facing down, attach it to the mat's adhesive side.

Slowly attach the support sheet from its edges so that no air is trapped between the mat and the sheet.

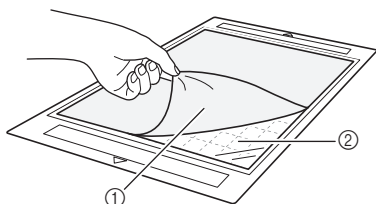


① Glossy side of support sheet

## Note

- Place the support sheet within the attaching area (grid area) on the adhesive side of the mat. If the sheet extends from the attaching area, it may be damaged by the feed rollers when the mat is fed.

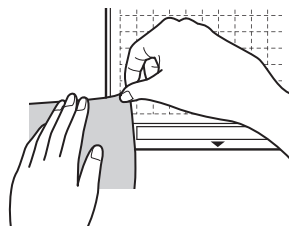
## 3 Peel off the backing from the top of the support sheet.



① Backing  
② Adhesive

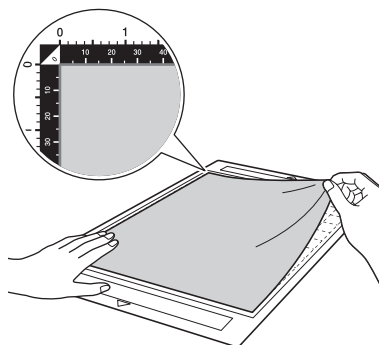
## 4 Test attaching the material.

Before attaching the material to the mat, use a corner of the adhesive side of the mat to test attaching it. If any problems occur when testing attaching, use different material.



## 5 From its edges, attach the material to the adhesive side of the mat so that there are no wrinkles in the material.

To remove wrinkles be sure to iron the fabric before attaching it to the mat.



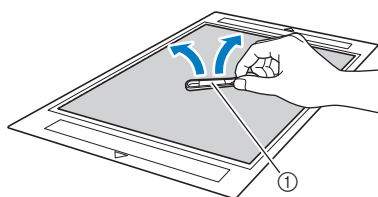
## Note

- Place the material within the attaching area (grid area) on the adhesive side. If the material extends from the attaching area, it may be damaged by the feed rollers when the mat is fed.

## Memo

- The mat does not have a top and bottom. It can be inserted into the feed slot from either end.
- Be sure that the vertical grain of the attached fabric runs straight up and down.
- When drawing a seam allowance, attach the fabric to the mat with its wrong side facing up.

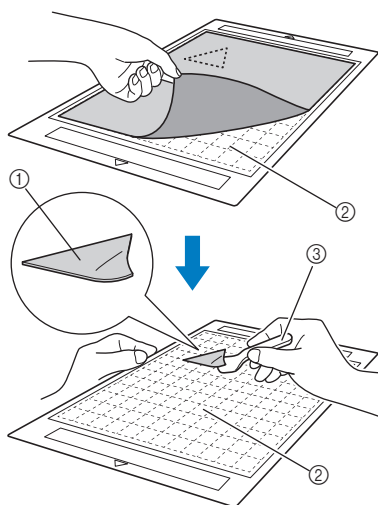
- 6 Firmly move the spatula handle across the surface of the fabric to remove any wrinkles and firmly attach the fabric to the mat.



① Spatula

### ❑ Peeling Off the Material (Fabric for Quilt Piecing)

After cutting the material, use a spatula to slowly peel off just the fabric. Try not to peel off the support sheet.



- ① Fabric cut out  
② Support sheet remaining on the mat  
③ Spatula



### Note

- The support sheet may be unintentionally peeled off while you are removing the fabric from the mat under the following conditions:
  - The adhesive between the mat and the support sheet is becoming weak after repeated uses.
  - The support sheet tends to be strongly attached to a certain type of fabrics.
- In this case, use the included spatula to hold the support sheet on the mat and remove the fabric using your hand.
- After cutting, carefully remove any fibers remaining on the support sheet.
- When attaching fabric with an iron-on sheet attached or paper to the mat, cleanly peel off the support sheet from the mat, or attach the material to a different standard mat without a support sheet attached.
- Do not leave material attached to a mat with a support sheet attached for a long period of time; otherwise, the adhesive will permeate the material.

### ❑ Notice on Use of High Tack Adhesive Fabric Support Sheet

- When the sheet's adhesive strength decreases or fabric becomes twisted while being cut, replace the sheet with a new one.
- When peeling the sheet off the mat or replacing the sheet, use the spatula to carefully remove the old sheet.
- Store the mat in between uses with the protective sheet affixed to the support sheet.
- If a mat with a support sheet attached is not to be used for a certain length of time, peel the support sheet off the mat and affix the protective sheet on the adhesive side of the mat before storing it.
- Do not reuse a support sheet that has been attached to the mat.
- Store the support sheet at room temperature and in a location not exposed to high temperatures, high humidity or direct sunlight.
- Do not bend the support sheet to store it.
- We recommend attaching it to a new cutting mat.

## Adjusting the Blade Extension

The appropriate blade extension differs depending on the material type and thickness. Before installing the holder in the carriage, turn the holder cap to adjust the blade extension, and then perform trial cutting. For details on trial cutting, see “Trial Cutting” on page 37.

### ■ Cutting Settings

Use the following table to select the appropriate settings according to the material that will be cut.

Material and its thickness			Blade scale setting *Half cut	Cut pressure setting	Cutting blade	
					Standard cut blade (turquoise)	Deep cut blade (purple)
Paper	Printer paper	80 g/m <sup>2</sup> (0.1 mm)	3	-1	✓	
	Scrapbook paper (thin)	120 g/m <sup>2</sup> (0.15 mm)	3.5	0	✓	
	Scrapbook paper (medium-thick)	200 g/m <sup>2</sup> (0.25 mm)	4	0	✓	
	Cardstock (thin)	200 g/m <sup>2</sup> (0.25 mm)	4	0	✓	
	Cardstock (medium-thick)	280 g/m <sup>2</sup> (0.35 mm)	5	0	✓	
	Vellum, tracing paper	0.07 mm	3	0	✓	
	Poster board (thin)	280 g/m <sup>2</sup> (0.35 mm)	5.5	0	✓	
	Poster board (thick)	400 g/m <sup>2</sup> (0.5 mm)	7.5	4	✓	
Fabric	Thin cotton fabric (for quilt piece)	0.25 mm	4	4	✓	
	Thin cotton fabric (except for quilt piece)	0.25 mm	4	4	✓	
	Flannel (for quilt piece)	0.6 mm	6.5	4	✓	
	Flannel (except for quilt piece)	0.6 mm	6.5	4	✓	
	Felt	1 mm	5	5		✓
	Denim 14 oz	0.75 mm	5.5	6		✓
Others	Plastic sheet (PP)	0.2 mm	4	0	✓	
	Vinyl	0.2 mm	4	0	✓	
	Adhesive Craft Vinyl (backing sheet : 0.1 mm)	0.07 mm	1.5 *	-1	✓	
	Magnet	0.3 mm	5.5	0	✓	
	Sticker or seal	0.2 mm	4	0	✓	
	Sticker Sheet (backing sheet : 0.15 mm)	0.15 mm	2 *	-1	✓	

- Adjust the cutting pressure from the settings screen in DesignNCut Manager. (→ See page 11)
- Use a high tack adhesive fabric support sheet or an iron-on fabric appliqué contact sheet when you cut a piece of fabric out.

For details, see “Mat and Material Combinations” on page 24.

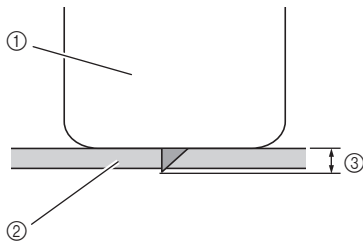


#### Note

- The settings indicated in the table are approximations. The setting will differ depending on the type and the thickness of the material to be cut. Be sure to perform a trial cutting first.

## Appropriate Blade Extension

Adjust the blade extension to slightly exceed the thickness of the material that will be cut. Use the markings on the holder to make the adjustment.



- ① End of holder cap
- ② Material that will be cut
- ③ Length of blade tip



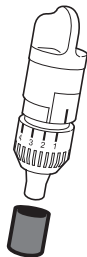
### Note

- Be careful that the blade does not extend too much. The blade can cut even though it only slightly extends from the holder. If too much of the blade extends, it may break.

## ■ Adjusting the Cutting Blade

### 1 Remove the protective cap.

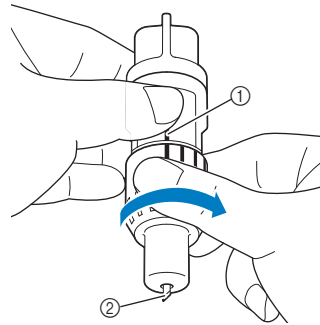
- After use, be sure to retract the blade into the holder and attach the protective cap.



## ! CAUTION

- Do not allow infants/children to put the protective caps in their mouths.

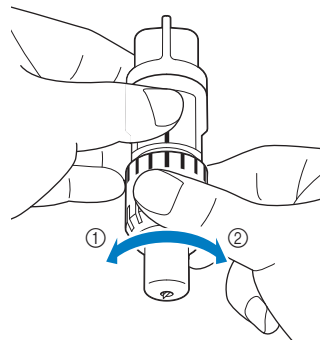
- 2** With the reference line on the holder facing toward you, fully turn the cap to the right to extend the blade tip to its maximum.



- ① Reference line
- ② Extend the blade tip to its maximum.

- 3** Check the thickness of the material, and then adjust the blade extension. See “Cutting Settings” on page 32.


The larger the holder scale setting, the further the blade extends.



- ① Turn to the left to decrease the blade extension.
- ② Turn to the right to increase the blade extension.

## Installing and Uninstalling the Holder

After adjusting the blade extension, install the holder in the machine. For the blade extension appropriate for the material, see “Adjusting the Blade Extension” on page 32.

- 1 Press  in the operation panel to turn on the machine.

For details, see “Turning On/Off the Machine” on page 6.

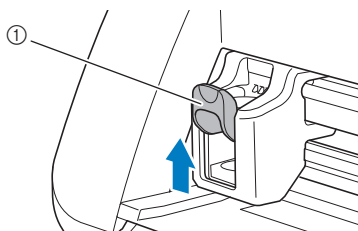


### Note

- Be sure to turn on the machine before installing the holder.
- If the holder is installed while the machine is off, the blade may break and material may not be cut cleanly.

- 2 If the holder lock lever is not raised, raise it.

The holder cannot be installed if the lever is lowered.

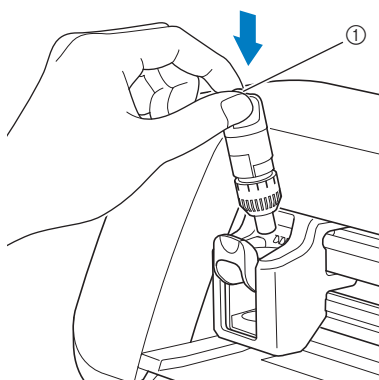


① Holder lock lever

## ! CAUTION

- Please remove protective cap from blade holder before placing it into the machine carriage.
- Do not allow infants/children to put the protective caps in their mouths.

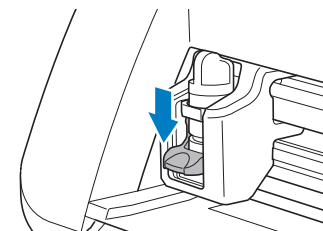
- 3 Grasp the holder grip, and then insert the holder into the carriage.



① Grip

- 4 Push down on the holder lock lever.

Firmly push down until the holder is locked in place.



- 5 Reverse the installation procedure to uninstall the holder.

## ! CAUTION

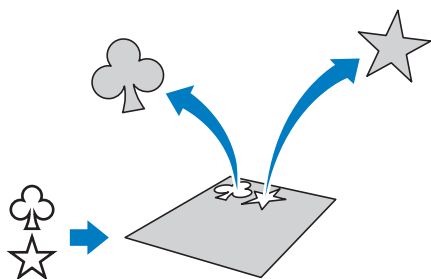
- After removing the blade holder from the machine, be sure to retract the blade into the holder and attach the protective cap.
- Do not leave the blade extended. Otherwise, injuries may result.
- Do not allow infants/children to put the protective caps in their mouths.

## Chapter 2 BASIC OPERATIONS

### PATTERN CUTTING

The following procedures use patterns to describe the entire series of operations, from selecting a pattern and editing it to cutting.

#### Tutorial 1 - Cutting Patterns




#### ■ Connecting the Machine and Computer

This machine and a computer installed with DesignNCut Manager (DesignNCut application for operation options) can be connected either wirelessly or with a USB cable.

- For details on the connection methods, see "CONNECTING THE MACHINE AND COMPUTER" on page 12.

#### ■ Turning On the Machine

Press  to turn on the machine.

- For details, see "Turning On/Off the Machine" on page 6.

#### ■ Setting the Holder

Install the cutting blade holder into the carriage of the machine.

- For details, see "Installing and Uninstalling the Holder" on page 34.

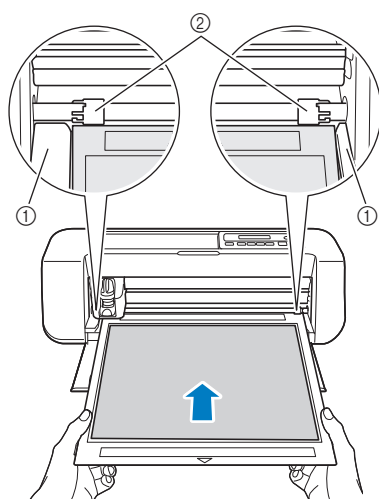
#### ■ Loading the Mat

##### 1 Attach the material that will be cut to the mat.

- For details on attaching material to the mat, see "Attaching the material to the mat" on page 26.

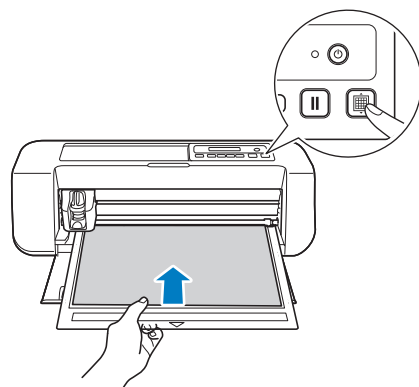
##### 2 While holding the mat level and lightly inserting it into the feed slot, press in the operation panel.

Lightly insert the mat so that it aligns with the guides on the left and right sides of the feed slot and is tucked under the feed rollers.



① Guides

② Feed rollers



- The mat is fed in to complete the preparations for cutting.



## ■ Sending Patterns to the Machine



### 1 Start up DesignNCut Manager.



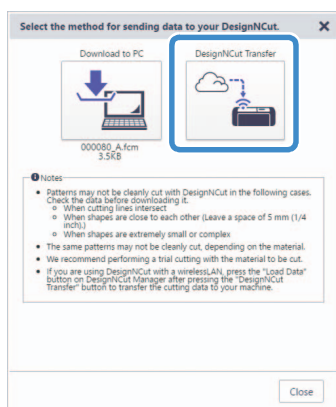
### 2 Log in to ScanNCutCanvas, and edit the pattern.




#### Note

- Make sure that the pattern to be cut fits the size of the material and fits within the cutting area. If the pattern does not fit within the cutting area, adjust the location of the pattern and/or the pattern size in ScanNCutCanvas.

### 3 Click [Download], then [DesignNCut Transfer] to send the pattern to the machine.



#### Memo

- For details on editing, transferring or downloading patterns, click  in ScanNCutCanvas, and then refer to "Downloading a Project" in the Help.
- When downloading a pattern using a USB cable (computer only), click [Download to PC] to send the pattern.

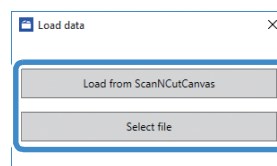
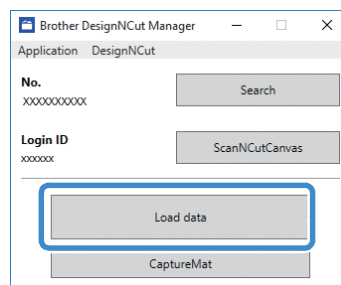


### 4 Click [Load data] in the main window of DesignNCut Manager, and then click [Load from ScanNCutCanvas] to import the pattern.



#### Memo

- With the mobile device version, tap [Load data] in the main screen. A preview screen appears.



- The pattern preview window appears.

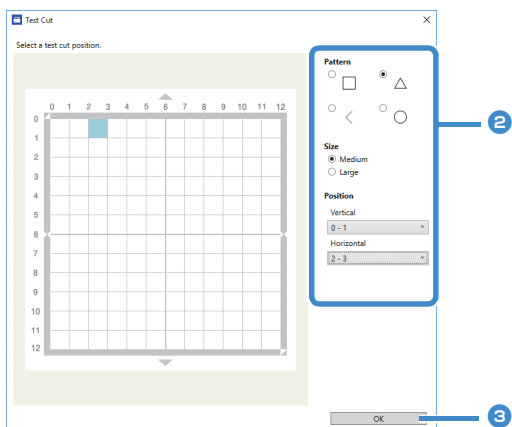
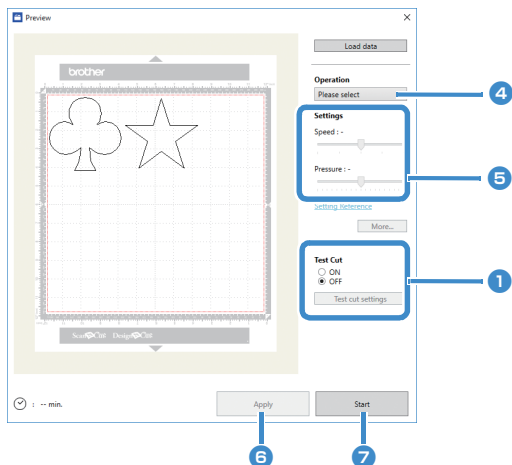


#### Memo

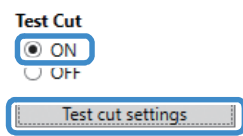
- To open a pattern saved on the computer, click [Select file].

## Trial Cutting

Adjust the blade extension according to the material, and then use the same material to be used in your project to perform trial cutting.



- 1 Set [Test Cut] to [ON], and then click [Test cut settings].



- A window for specifying detailed settings appears.

### Memo

- With the mobile device version:  
Preview window→[Test Cut].

- 2 Select the desired shape under [Pattern], and then select settings for [Size] and [Position].

Refer to the grid references on the mat, and select the location of the trial cutting shape from the drop-down lists.

Example: Settings when positioned in the lower-left corner of the mat  
Vertical: 11-12  
Horizontal: 0-1

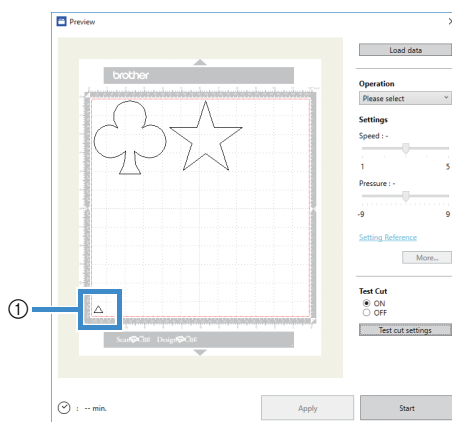
### Memo

- The trial cutting shape can also be positioned by clicking a cell (block) in the mat shown in the test cut setting window.

- 3 Click [OK], and then position the trial cutting shape.

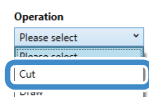
### Note

- Make sure that the location for the trial cutting shape does not overlap the location for the pattern and does not extend from the material.



- 1 Trial cutting shape at the location specified in step 2

- 4 In DesignNCut Manager, select [Cut] from the [Operation] drop-down list.



### Memo

- With the mobile device version:  
Preview window→[Operation]→[Cut]

- 5 With the sliders, specify settings for [Speed] and [Pressure] for cutting.

### Memo

- With the mobile device version:  
Preview window→[Settings]→[Speed]/[Pressure]

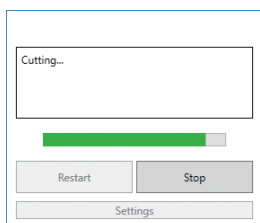
## Note

- Depending on the material being used, it may not be cut cleanly if the cutting pressure is not correctly adjusted. For details on the appropriate cutting pressure, see "Cutting Settings" on page 32.

6 Click [Apply].

7 Click [Start].

- The following window appears.




## Memo

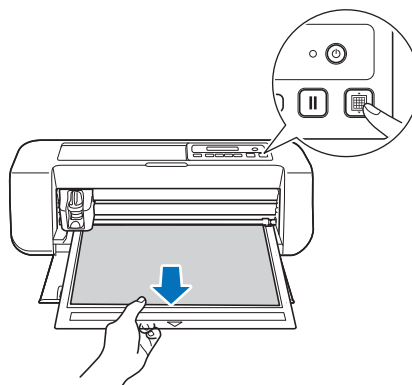
- If any machine button other than the power button is pressed, the machine pauses cutting.
- The following message appears on the machine's screen when cutting is paused. You can stop or resume cutting from the machine.



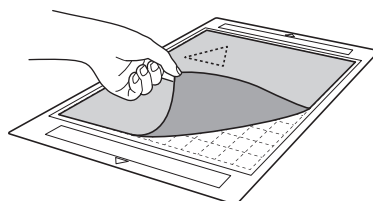
Cutting paused. Resume: [OK]  
Stop: [STOP]

## ■ Unloading the Mat

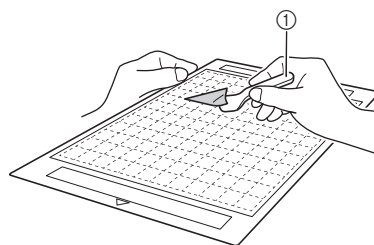
1 Press  on the operation panel to feed out the mat.



2 Peel off the material from an area that is easily removable, such as a corner, and then slowly peel while maintaining an even pressure.



3 Holding the mat with your hand, use the included spatula to peel off the cutout patterns carefully.



① Spatula

## Note

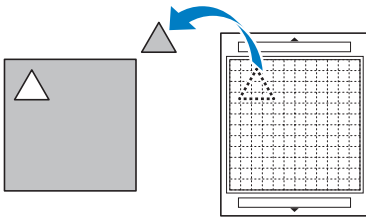
- For instructions on how to peel off the material, see page 27, 29, 31.

### ■ Checking the Trial Cutting Results

- Adjust the blade extension according to the trial cutting results.
- Repeatedly perform trial cutting and adjust the blade extension until the material is cut cleanly.
- Make sure that the location for the new trial cutting shape does not overlap the location for the previous trial cutting patterns.

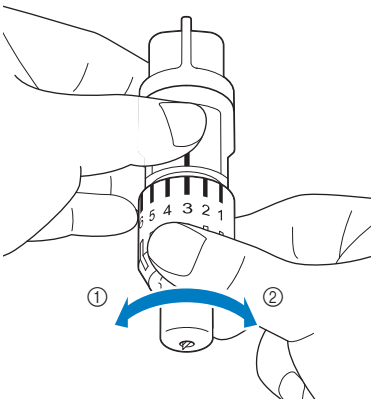
#### □ With an Appropriate Blade Extension

When the material is peeled off, a faint trace of the cut remains on the mat surface.



#### □ With a Blade Extension That Needs to be Adjusted

Trial cutting results	Tips for adjustment
Part of the cut material remains when it is peeled off.	Too Little of a Blade Extension: Turn the holder cap half a marking to the right. (②)
The material is not clearly cut.	Too Little of a Blade Extension: Turn the holder cap one marking to the right. (②)
There are deep cuts completely through the mat.	Too Much of a Blade Extension: Turn the holder cap one marking to the left. (①)

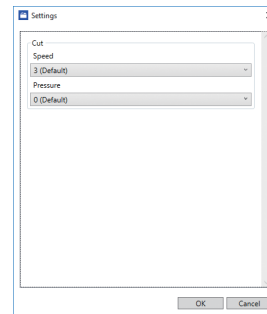
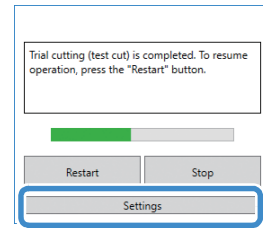


#### Note

- Be careful that the blade does not extend too much. Otherwise, the blade may break. If there is too much of a blade extension, some material may not be cut cleanly. In addition, the mat will deteriorate quicker.

### □ Adjusting the Cutting Speed/Pressure

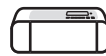
Click [Settings] in the DesignNCut Manager window that appears when cutting to display a window where settings can be adjusted.



#### Note

- After adjusting the setting, it will begin cutting the pattern when clicking [Restart]. To perform the trial cutting again, click [Stop] and then follow the procedure in "Trial Cutting" on page 37.

### ■ Cutting the Pattern

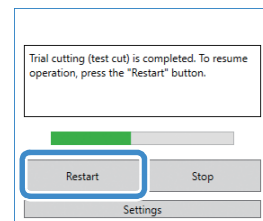



#### 1 If there is no problem with the trial cutting, load the mat with the material attached.

- For details, see "Loading the Mat" on page 35.



#### 2 Click [Restart] in the DesignNCut Manager window.



- To stop cutting, click [Stop]. If it is clicked again, the blade and the mat will return to their original positions.
  - When cutting is finished, press  to feed out the mat.
-

## Chapter 3 ADVANCED OPERATIONS

### DRAWING FUNCTIONS

With a pen and pen holder, you can draw patterns on material. Using the seam allowance settings also allows you to draw patterns with seam allowances on material and then cut them out. These drawing functions can be used to create quilt pieces.

#### ■ Preparation

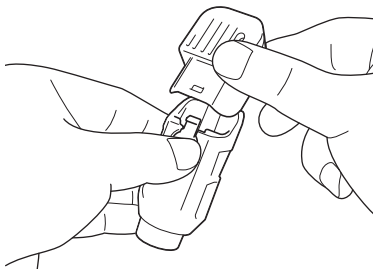
Prepare the following accessories for drawing. An additional purchase may be required depending on the machine model.

- Pen holder
- Erasable pen set or color pen set
- Mat appropriate for the material that will be drawn on.
- Blade and blade holder appropriate for the material that will be cut.
- Iron-on fabric appliqué contact sheet or high tack adhesive fabric support sheet appropriate for fabrics that will be cut or drawn on.

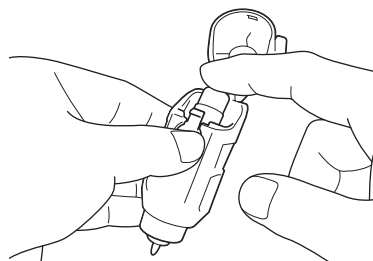
### Drawing

#### ■ Preparing the Pen Holder

- 1 Press the button at the center of the pen holder to unhook the lid and open it.



- 2 Remove the cap from the pen, and then insert the pen into the pen holder with the point down.



- 3 Close the lid of the pen holder.



#### Note

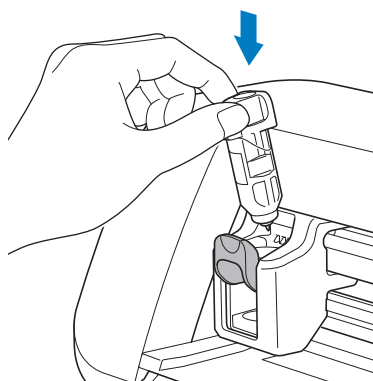
- After use, remove the pen from the pen holder, and then attach the cap to the pen before storing it.

#### ■ Drawing



- 1 Grasp the holder grip, and then install the pen holder in the carriage with its lid opening button facing against you.

- For details, see “Installing and Uninstalling the Holder” on page 34.



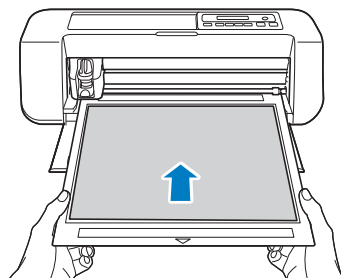
## 2 Load the mat with the material for drawing (cutting) attached.

- For details on attaching material to the mat, see “Mat and Material Combinations” on page 24.
- Lightly insert the mat into the feed slot, and press




in the operation panel.

- For details on inserting the mat, see “Loading the Mat” on page 35.



## 3 In ScanNCutCanvas, create the pattern to be drawn, and then send it to the machine.

- For details on editing, transferring or downloading patterns, click  in ScanNCutCanvas, and then refer to the Help.



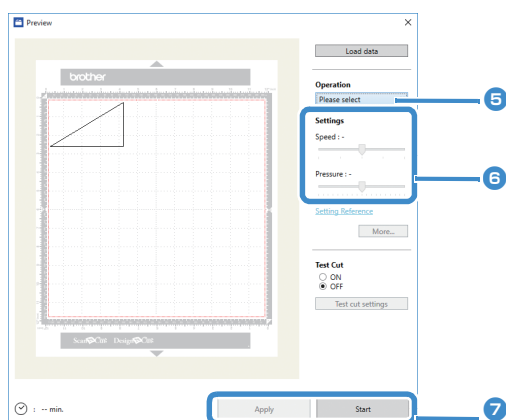
### Note

- Make sure that the pattern to be drawn fits the size of the material and fits within the drawing area. If the pattern does not fit within the drawing area, adjust the location of the pattern and/or the pattern size in ScanNCutCanvas.



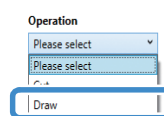
## 4 Open the pattern in DesignNCut Manager.

- For details on opening pattern data, see “Sending Patterns to the Machine” on page 36.



- ▶ The pattern appears in the drawing/cutting settings window of DesignNCut Manager.

## 5 Select [Draw] from the [Operation] drop-down list.



### Memo

- With the mobile device version:  
Preview windows→[Operation]→[Draw]

## 6 With the sliders, specify settings for [Speed] and [Pressure] for drawing.

Before drawing a pattern, specify the drawing speed and pressure.



### Note

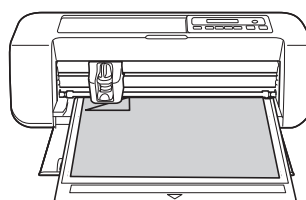
- If the drawing pressure is too high, the pen tip may be damaged. Adjust it to an appropriate setting.
- We recommend setting the drawing pressure to “0”.



### Memo

- Adjustments to the drawing pressure will affect the finished product. Use the same material that the pattern will be drawn on to make the adjustments.

## 7 After clicking [Apply], click [Start] to begin drawing.



- To perform trial drawing in order to adjust the drawing pressure, repeat steps 5 through 7.



### Note

- After use, remove the pen from the pen holder, and then attach the cap to the pen before storing it.

## Using Drawing Functions to Fill Patterns/Make Outlines Thicker



### Note

- Depending on the material and pen being used, material drawn with a filled pattern may be difficult to peel off or may tear. Perform trial drawing with the pattern to be used in your project.
- To fill in the pattern, select the [Fill the area in the outline with the drawing function] check box in the [Properties] dialog box in the ScanNCutCanvas, and then send the pattern to the machine.



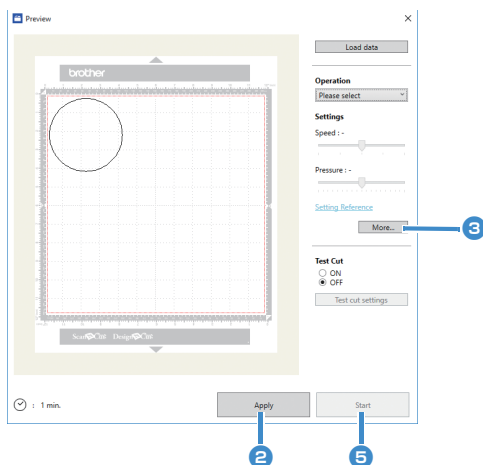
### Memo

- An open pattern cannot be filled.  
Example:



- The fill settings will be applied to all patterns in the pattern preview window.
- Fill and outline settings cannot both be specified for the same pattern.

## Filling Patterns



1 See steps 3 through 5 in "Drawing" on page 41 to specify the drawing settings.

2 Click [Apply].

► Various fill settings can be specified.

3 Click the [More...] to display the fill settings screen.

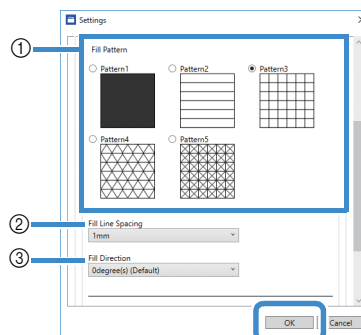
The settings can also be changed by clicking [Settings] in the [DesignNCut] menu of the main window.



### Memo

- With the mobile device version: Preview Window → [Settings] → [FILL / ADDITIONAL LINE] or Main window → → [Settings] → [Operation]

4 After selecting a design under [Fill Pattern], specify settings for [Fill Line Spacing] and [Fill Direction], and then click [OK].



1 **Fill Pattern**

Select the fill pattern.

2 **Fill Line Spacing**

Adjust the spacing of the lines filling the pattern.

3 **Fill Direction**

Adjust the direction of the fill pattern.

5 Click [Start] to begin drawing.



## ■ Making Pattern Outlines Thicker

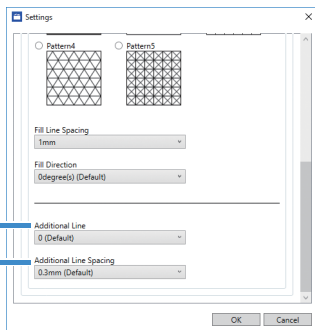
Additional lines can be drawn to make pattern outlines appear thicker.

- 1 See steps 2 through 3 in “Filling Patterns” on page 43 to specify the drawing settings.
- 2 After specifying settings for [Additional Line] and [Additional Line Spacing], click [OK].



### Note

- The settings for “Additional Line” and “Additional Line Spacing” will not be applied to patterns with fill settings applied. For details on the fill settings, see “Using Drawing Functions to Fill Patterns/Make Outlines Thicker” on page 43.



- 1 **Additional Line**  
Specify the number of lines to be added.
- 2 **Additional Line Spacing**  
Specify the spacing of the lines to be added.



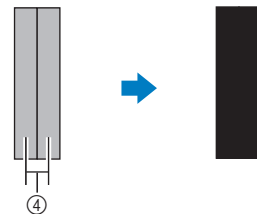
### Note

- Refer to the following examples when specifying settings for “Additional Line” and “Additional Line Spacing”.

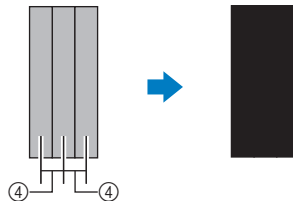
- 1 **Additional Line 0:** No lines added.



- 2 **Additional Line 1:** One line added.



- 3 **Additional Line 2:** Two lines added.



- 4 **Additional Line Spacing:** Adjusts the line spacing. Increasing the line spacing creates a space between the lines.



### Memo

- The drawing result differs depending on the thickness of the pen that is used. Make adjustments according to the pen thickness.

## Cutting Around Drawings

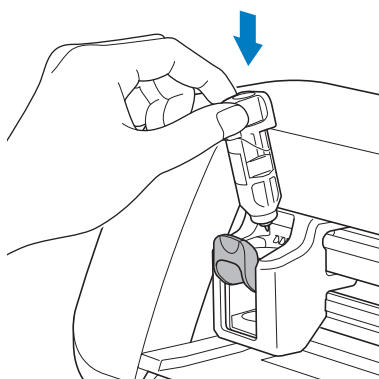
In this example, we will specify a seam allowance for a pattern and draw the pattern, then cut an outline around it.

### ■ Specifying the Seam Allowance



- 1 Grasp the holder grip, and then install the pen holder in the carriage with its lid opening button facing against you.

- For details, see “Installing and Uninstalling the Holder” on page 34.



- 2 Load the mat with the material for drawing (cutting) attached.

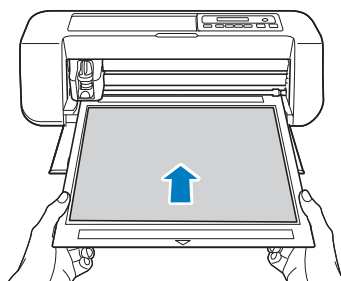
When drawing the seam allowance on the wrong side of the fabric, attach the material to the mat with its wrong side facing up.

- For details on attaching material to the mat, see “Mat and Material Combinations” on page 24.
- Lightly insert the mat into the feed slot, and press




in the operation panel.

- For details on inserting the mat, see “Loading the Mat” on page 35.



- 3 In ScanNCutCanvas, select the pattern to be drawn, and then specify the seam allowance.

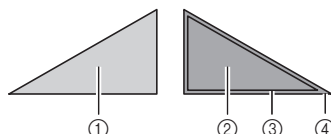
- For details on editing patterns, click  in ScanNCutCanvas, and then refer to “Creating Offset Lines” in the Help.



#### Memo


- To draw the seam allowance on the wrong side of the fabric, flip the pattern.

#### Image of Pattern Piece to be Created



- ① Right side of the fabric
- ② Wrong side of the fabric
- ③ Drawing line (stitching line)
- ④ Seam allowance line

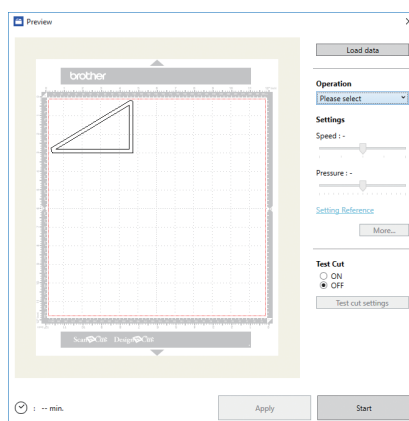
- 4 Send the pattern with the seam allowance specified to the machine.

- For details on editing, transferring or downloading patterns, click  in ScanNCutCanvas, and then refer to the Help.



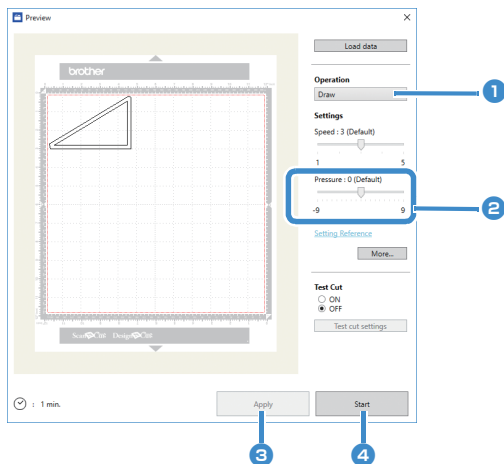
- 5 Open the pattern in DesignNCut Manager.

- For details on opening pattern data, see “Sending Patterns to the Machine” on page 36.

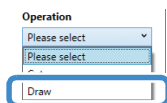


- The pattern appears in the drawing/cutting settings window of DesignNCut Manager.

## ■ Drawing



- 1 Select [Draw] from the [Operation] drop-down list.



### Memo

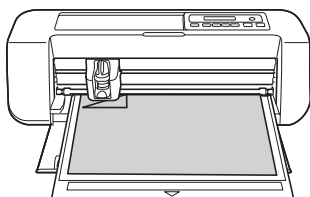
- With the mobile device version:  
Preview window→[Operation]→[Draw]


- 2 Adjust the drawing pressure.

For details on adjusting the drawing pressure, see step 6 in “Drawing” on page 41.

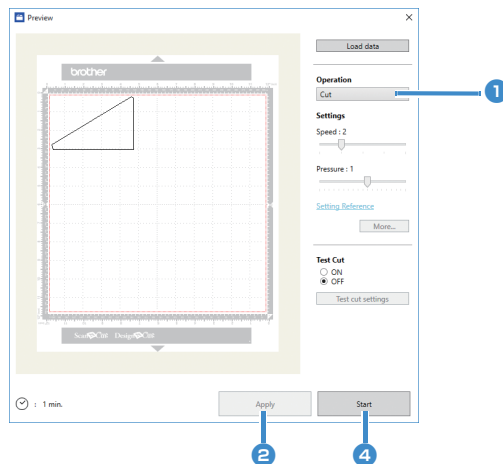
- 3 Click [Apply].

- 4 Click [Start] to begin drawing.

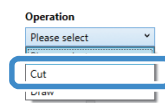


- To cut around the drawn patterns, keep the mat inserted into the slot without pressing , and continue with the following cutting procedure.

## ■ Cutting



- 1 Select [Cut] from the [Operation] drop-down list.



### Memo

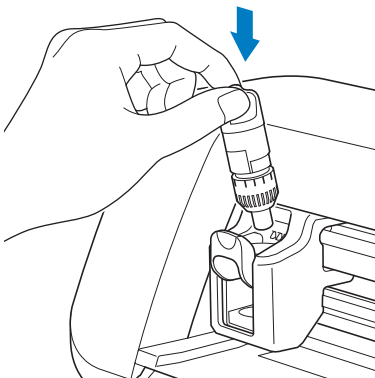
- With the mobile device version:  
Preview window→[Operation]→[Cut]

- 2 Click [Apply].

► A preview of the lines to be cut appears.



- 3 Remove the pen holder, and then install the blade holder.**



#### Note

- After use, remove the pen from the pen holder, and then attach the cap to the pen before storing it.



## CAUTION

- Before installing the blade holder in the machine, remove the protective cap.
- Do not allow infants/children to put the protective caps in their mouths.



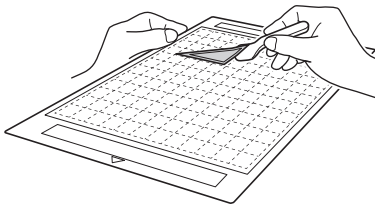
- 4 Click [Start] to begin cutting.**



- 5 Press  in the operation panel to feed out the mat.**

- 6 Peel the patterns off the mat.**

- For details, see “Unloading the Mat” on page 38.



## CaptureMat FUNCTION

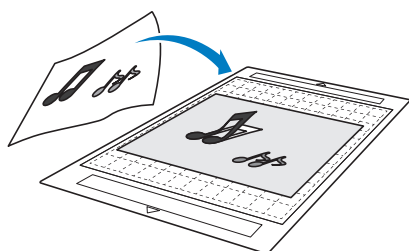
A printed image (paper or sticker), as stamped page or an original hand-drawn illustration can be captured and its outline can be cut out or drawn. This is useful for capturing images for paper crafts, then cutting them out.



### Note

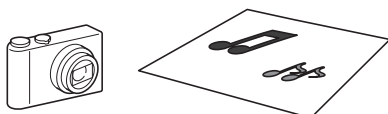
- Connect the machine and computer with Wireless Mode to use this function.

## Tutorial 2 - Cutting Photographed Material



### ■ Preparation

#### 1 Prepare the material and a camera.



When using "CaptureMat" function, prepare the following types of material.

- Patterns that are clearly drawn, with no gradation, fading or blurriness
- Not using an extremely intricate design



#### 2 Press to turn on the machine.

- For details, see "Turning On/Off the Machine" on page 6.

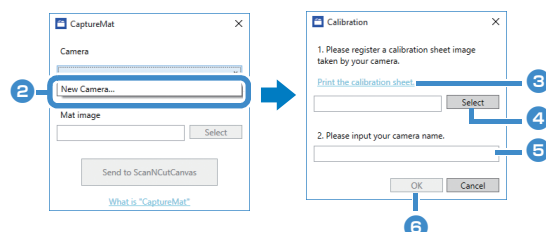
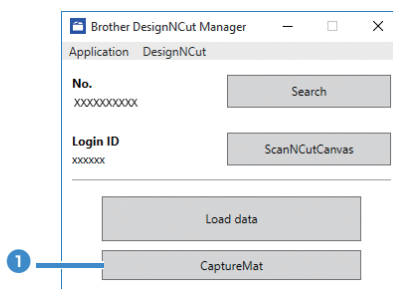
#### 3 Install the cutting blade holder into the carriage of the machine.

- For details, see "Installing and Uninstalling the Holder" on page 34.

### ■ Photographing Material and Importing the Data

#### □ Registering the Calibration Data of the Camera Used for Photographing

Data for adjusting the distortion, etc., of the camera used for photographing must first be registered with DesignNCut Manager.



#### 1 Click [CaptureMat].

- ▶ A window appears, allowing you to register photos and the camera to be used.



### Memo

- With the mobile device version: Tap [CaptureMat], and then go to step 3 to photograph the calibration sheet.

#### 2 Select [New Camera....] from the [Camera] drop-down list.


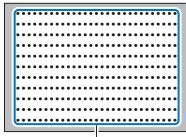

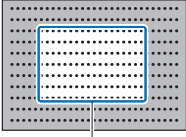

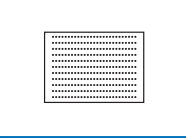

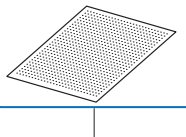
- ▶ The window for registering calibration data appears.

- 3 Place the included calibration sheet on a flat surface, and then photograph it from directly above.

Save the photo to the computer.

#### Memo

- You can print the calibration sheet with your printer by clicking [Print the calibration sheet.].
- With the mobile device version; tap [Calibration] and photograph the calibration sheet.

  <p>①</p>	<p>■ <b>Image correctly photographed</b></p> <p>Make sure to capture all of the dots in the calibration sheet and only capture the dots in the calibration sheets.</p>
  <p>①</p>	<p>■ <b>Camera too close to paper</b></p> <p>If the camera is too close to the paper, calibration will not be performed correctly.</p>
  <p>①</p>	<p>■ <b>Camera too far from paper</b></p> <p>If the camera is too far away from the paper, calibration will not be performed correctly.</p>
  <p>①</p>	<p>■ <b>Paper at an angle</b></p> <p>If the camera and paper are misaligned, calibration will not be performed correctly.</p>

\*① Photographed area

#### Note

- Take the photo in a well-lit location.
- Before taking the photo, wipe the camera lens with a soft dry cloth, and make sure that the lens is not dirty.
- When photographing, make sure that there are no objects or shadows on the paper.
- If the calibration sheet is dirty or folded, print a new copy of the calibration sheet and take a photo of the new sheet.
- When photographing, do not zoom or use a flash.

- 4 Click [Select], and then select the image saved in step 3.

- The name of the imported image appears in the box.

#### Note

- The only image files that can be used are JPG files.

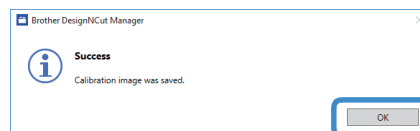
- 5 Under [2.Please input your camera name.], type in the name of the camera.

#### Memo

- Depending on your camera, its name may automatically be entered when the image is selected in step 4.

- 6 Click [OK].

- The following message appears.

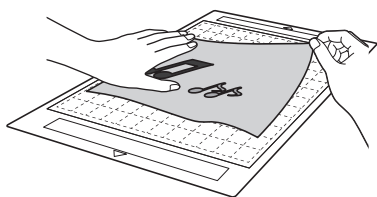


#### Memo

- The next time "CaptureMat" function is used, repeat steps 2 through 6 to register new camera (if the image that will be used was photographed with a camera different from the one that was registered).

## ❑ Importing an Image of Material

- 1 Attach the material to be photographed to the mat.

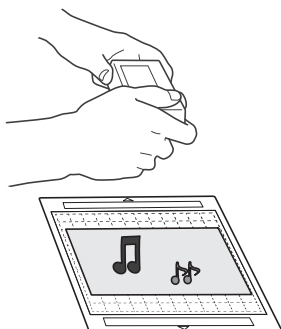


### Memo

- The 12" × 24" (305 mm × 610 mm) mat cannot be used.
- Before attaching the material to the mat, test attaching an edge of the material to the adhesive side of the mat.
- **Try to attach the part to be cut toward the middle of the mat.**

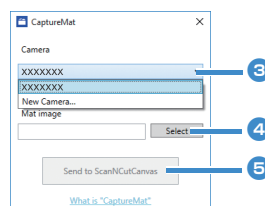
- 2 Place the material on a flat surface, and then photograph it from directly above so that the entire mat completely fills the camera screen.

Save the photo to the computer.



### Note

- Before photographing, attach the material so it does not cover any area outside of the adhesive area of the mat.
- Hold the camera as level as possible when taking the photo.
- When photographing, do not zoom or use a flash.
- Take the photo so that the entire mat completely fills the camera screen. If the entire mat does not completely fill the camera screen, cutting data cannot be created.
- Make sure that your mat fills the camera screen, and that surrounding area is not on your screen.
- When photographing, make sure that there are no other objects or shadows on the mat.
- When photographing a white solid object use a dark background.



- 3 Select the name of the registered camera from the [Camera] drop-down list.

- 4 Click [Select] beside [Mat Image].

When the dialog box for selecting the image appears, select the photo, and then click [Open].

### Note

- The only image files that can be used are JPG files.


- 5 Click [Send to ScanNCutCanvas].

► The image is imported into ScanNCutCanvas.




## ■ Creating Cutting Data

Cutting data can be created using the Image Tracing functions in ScanNCutCanvas.

- 1 Click  in the ScanNCutCanvas toolbar to display the [Image Tracing] dialog box.

- 2 Click [Select the image snapped by CaptureMat], and then import an image sent from DesignNCut Manager.

- For details on creating cutting data using the tracing functions, click  in ScanNCutCanvas, and then refer to "Tracing Images" in the Help.

### Memo

- For the criteria on replacing a worn mat when the cutting position is greatly misaligned, see "Replacing the Blade" on page 51.
- If the cutting position is misaligned, see "Adjusting the Mark Sensors" on page 55, and change the machine settings.
- Cut with the machine on a level desk, and do not allow the mat to hit any objects.

- 3 After creating the cutting data, click [Download], then [DesignNCut Transfer] to send the cutting data to the machine.

### CONSUMABLES

#### Replacement Criteria

For the safe operation of this machine, replace the following consumables according to the replacement criteria. To purchase parts, contact the retailer who sold you this machine or the nearest authorized service center. For details on the optional accessories, see “OPTIONAL ACCESSORIES” on page 67.

##### Mat

- When the mat's adhesive strength decreases
- When there are many cutting traces in the mat

##### Cutting blade

- When the cuts in the material become rough, reducing the quality of the finished product
- When the cutting edge becomes blunt
- When the blade is chipped (If it cannot cut even though the blade extension or cutting pressure is set higher than necessary, the blade may be chipped.)

##### High tack adhesive fabric support sheet

- When the sheet's adhesive strength decreases
- When fabric attached becomes twisted while being cut

##### Erasable pen

- When the ink is dry and not marking the fabric properly
- When the ink is used completely

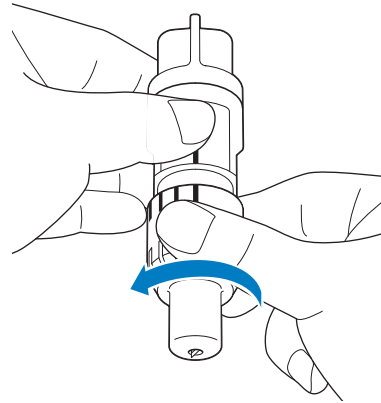
##### Color pen

- When the ink is dry and not marking the paper or material properly
- When the ink is used completely

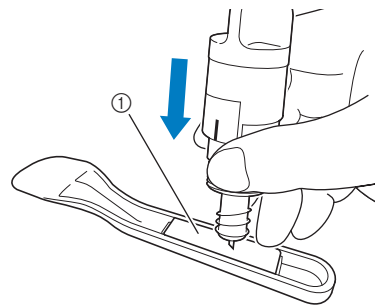
#### Replacing the Blade

##### ■ Removing

- 1 Twist off the holder cap to remove it.



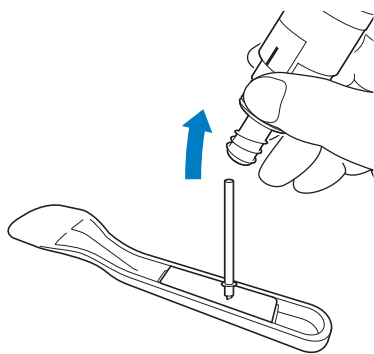
- 2 Stick the blade straight into the rubber area on the back of the included spatula.



① Rubber area



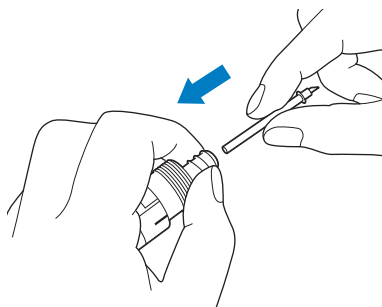
- 3** Pull up the holder to leave the blade in the rubber area.



## ■ Installing

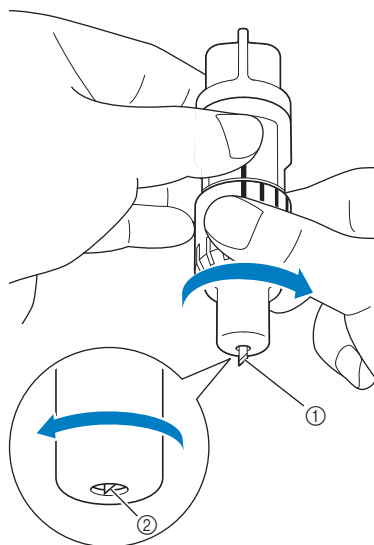
- 1** Grasp the shaft of the new blade, and then insert it into the blade slot at the end of the holder.

The blade shaft is held in place by a magnet in the holder. Slowly insert the blade shaft, and then slowly release it after the shaft snaps into place against the magnet.



- 2** Twist on the holder cap to attach it to the holder.

Fully tighten the cap until the blade extension reaches its maximum, and then loosen the cap until the blade is no longer visible.



- ① Tighten the cap until the blade extension reaches its maximum.  
② Loosen the cap until the blade becomes invisible from the cap end.



- Loosen the holder cap until the blade tip is no longer visible. The blade extension scale on the holder applies when the blade begins to be extended from the cap end. For details on the blade extension, see "Adjusting the Blade Extension" on page 32.

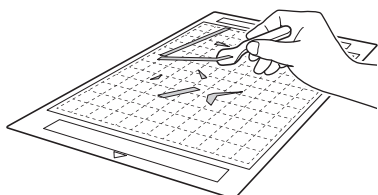
## ⚠ CAUTION

- After removing the blade holder from the machine, be sure to retract the blade into the holder and attach the protective cap.
- Do not leave the blade extended. Otherwise, injuries may result.
- Please remove the protective cap from blade holder before placing it into the machine carriage.
- Do not allow infants/children to put the protective caps in their mouths.

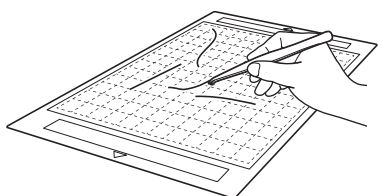
### Cleaning

#### ■ Cleaning the Mat

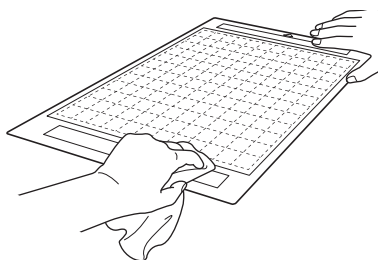
Cuttings and cut edges of patterns attached to the mat may reduce the mat's adhesive strength and prevent correct operation. Periodically clean the mat. Using the included spatula, lightly scrape off any cuttings attached to the mat.



Use commercially available tweezers to remove any fabric threads attached to the mat.



Clean the dotted marks on the mat and there surrounding area with a dry cloth.



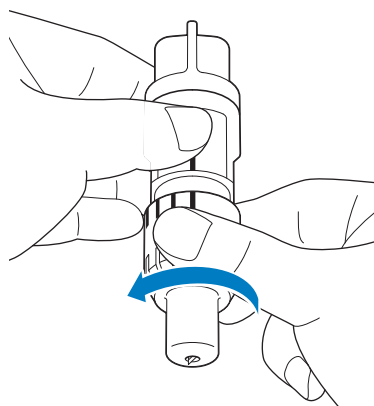
#### Note

- Do not use alcohol or water to clean the mat.
- When the mat is not being used, clean it, and then store it with the protective sheet affixed. If the protective sheet is not affixed, the mat's adhesive strength will decrease. At that time, do not affix the protective sheet while the mat is damp. Otherwise, the mat's adhesive strength will decrease.
- Do not fold or bend the mat to store it.
- Store the mat at room temperature and in a location not exposed to high temperatures, high humidity or direct sunlight.
- If the mat no longer has any adhesive strength, replace it with a new one. For details on optional mats, see "OPTIONAL ACCESSORIES" on page 67.

#### ■ Cleaning the Holder

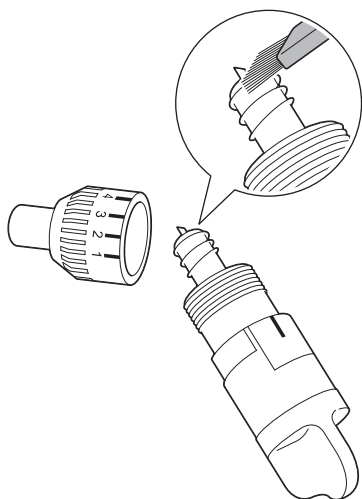
If material cuttings, lint or dust accumulate in the holder, it may not operate correctly. Clean the holder after every use.

- 1 Twist off the holder cap to remove it.



- 2** Using a commercially available brush, clean off cuttings, lint, and dust.

Specifically clean off lint and dust around the blade. If lint and dust accumulate between the blade and holder, the blade may no longer rotate or the cutting quality may become poor.



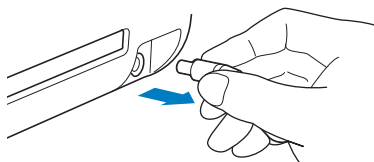
- 3** Attach the holder cap to the holder.

For details on attaching the holder cap, see “Installing” on page 52.

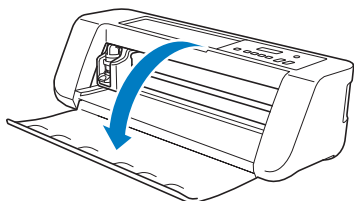
## ■ Cleaning Inside the Machine

The Lint may also attach to the surface of the feed rollers, preventing a mat to be loaded or unloaded correctly. Use a soft brush to clean it.

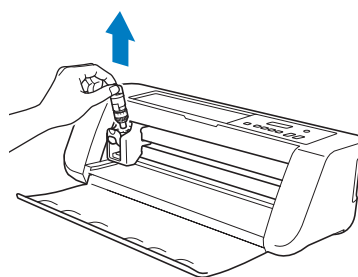
- 1** Turn off the machine and disconnect the power cord plug, and then disconnect the AC adapter plug from the DC power jack on the back of the machine.



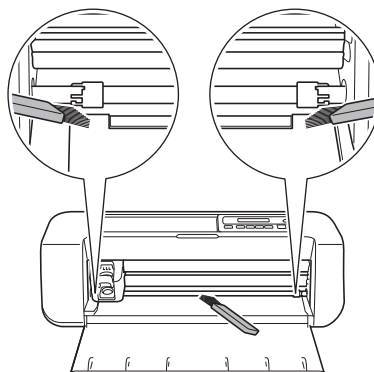
- 2** Open the cover on the front of the machine.



- 3** Remove the holder from the carriage.



- 4** Use a commercially available brush to clean around the feed slot and the carriage.



## Adjusting the Mark Sensors

If the cutting position is misaligned when cutting using the "CaptureMat" function, the machine can be manually adjusted.

- If the cutting position is shifted upward or downward from the actual pattern:  
Refer to step ②.
- If the cutting position is shifted right or left from the actual pattern:  
Refer to step ③.



### Note

- Check the shift of the cutting position with the mat in the same orientation as when it was fed out.

① From the machine's settings screen, select [3.Basic Setup], then [3.Mark Sensor].

② Press or to select the vertical adjustment value, and then press .

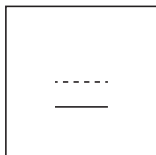
► The following message appears.



Vertical 0

Example: If the vertical adjustment value was changed from 0 to 2

(Before change --- After change — )



- If the cutting position is shifted upward, increase the value. If the cutting position is shifted downward, decrease the value.

③ Press or to select the horizontal adjustment value, and then press .

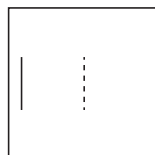
► The following message appears.



Horizontal 0

Example: If the horizontal adjustment value was changed from 0 to -5

(Before change --- After change — )



- If the cutting position is shifted to the left, increase the value. If the cutting position is shifted to the right, decrease the value.

## TROUBLESHOOTING

### Finding the Wireless LAN Security Information (Network Name (SSID) and Network Password (Key))

Please do not contact Brother Customer Service for assistance without the wireless security information. We cannot assist you in locating your network security settings.

- 1) You should see the documentation provided with your wireless access point/router.
- 2) The default SSID could be the manufacturer's name or the model name.
- 3) If you do not know the security information, please consult the router manufacturer, your system administrator, or internet provider.

- \* The Network Password may also be described as the Network Key, Security Key or Encryption Key.
- \* If the wireless access point/router is not broadcasting the SSID, the SSID will not automatically be detected. You will have to manually enter the SSID name.

### If the Machine Stops Operating Correctly

If the machine stops operating correctly, check the following possible problems before requesting service. You can solve most problems by yourself. If you need additional help, the Brother Solutions Center offers the latest FAQs and troubleshooting tips. Visit us at "<http://s.brother/cpqaa/>".  
If the problem persists, contact the retailer who sold you this machine or the nearest authorized service center.

#### Power Supply

Symptom	Possible Causes (or Results)	Solutions	Reference
The machine cannot be turned on.	The AC adapter is not correctly connected to the machine.	Check that the AC adapter is connected to the machine and that the power cord is connected to the AC adapter and electrical outlet.	page 6

#### Mat


Symptom	Possible Causes (or Results)	Solutions	Reference
The mat cannot be inserted.	When the mat was inserted, it was not placed under the feed rollers.	Insert the mat so that it is placed under the feed rollers on the left and right sides of the feed slot.	page 35
	The mat was not loaded using the "Feed" button.	Lightly insert the mat into the feed slot, and then press the "Feed" button.	page 35
The mat cannot be recognized.	The dotted marks on the part of the mat that is inserted are dirty.	Clean the dotted marks on the mat and their surrounding area.	page 53
	The dotted marks on the part of the mat that is inserted are hidden by material that was attached.	Attach the material while keeping it within the adhesive area of the mat.	page 26
	The mat was inserted so that the side with the material attached is facing down.	Insert the mat so that the side with the material attached is facing up.	page 35
	A mat designed specifically for DesignNCut is not being used.	Replace the mat with one designed specifically for DesignNCut.	—
The mat is fed in at an angle.	The mat was inserted into the feed slot at an angle.	Press the "Feed" button to feed out the mat, and then re-insert it straight in.	page 35 page 38
	The corners of the mat are deformed (bent).	Replace the mat with a new one.	page 51

Symptom	Possible Causes (or Results)	Solutions	Reference
The material to be cut/drawn cannot be attached to the mat.	The material extends from the adhesive area of the mat.	Attach the material while keeping it within the adhesive area of the mat.	page 26
	The mat's adhesive strength has decreased.	Replace the mat with a new one.	page 51
The mat cannot be fed out.	The material to be cut/drawn is jammed in the feeding mechanism in the machine.	Press the "Feed" button while the mat is being inserted to feed it out. If the mat does not feed out, turn off the machine, and then carefully pull out the mat.	page 38
When the mat is inserted, the attached material peels off.	The mat is not level due to the weight of the material.	With your hands, hold the mat level when inserting it.	page 35
	The mat's adhesive strength has decreased.	Replace the mat with a new one.	page 51

## Paper/Fabric Jam

Symptom	Possible Causes (or Results)	Solutions	Reference
The mat cannot be fed.	There is an obstruction around the slot at the back of the machine.	Maintain space around the slot at the back of the machine so that the mat can be fed out.	page 4
	The surface where the machine is installed is uneven.	Place the machine on a flat, even surface.	—
The mat or the material catches on a feed roller when the mat is being inserted.	The mat's adhesive strength has decreased, or the material is not secured.	Press the "Feed" button to feed out the mat, and then replace the mat with a new one.	page 38 page 51
	The material extends from the adhesive area of the mat.	Press the "Feed" button to feed out the mat, and then attach the material while keeping it within the adhesive area of the mat.	page 26 page 38
The mat or the material catches on a feed roller during cutting/drawing.	<ul style="list-style-type: none"> <li>- The mat's adhesive strength has decreased, or the material is not secured.</li> <li>- The material extends from the adhesive area of the mat.</li> </ul>	Press the "Pause/Stop" button to stop the operation. Follow the instructions on the screen, and press the "Feed" button to feed out the mat.	page 26 page 38 page 51
The mat is fed in at an angle and is not fed during cutting/drawing.		If the mat does not feed out, turn off the machine, remove the holder, and then manually feed out the mat.	
The material to be cut/drawn peels off during cutting/drawing.		After feeding out the mat, replace it with a new one or attach the material while keeping it within the adhesive area of the mat.	

## Cutting

Symptom	Possible Causes (or Results)	Solutions	Reference
The material being cut catches on the tip of the cutting blade.	Dust or lint has accumulated in the holder.	Clean the holder.	page 53
	The blade is worn.	Replace the blade with a new one.	page 51
	The material being cut is incompatible with this machine.	Replace the material with one compatible with this machine.	page 24
The machine stopped while an operation is being performed.	For safety, the machine stops operating if a button in the operation panel is pressed while cutting or drawing.	<p>Check that either of the following messages appear, and then press  to return the carriage to its original position. Insert the mat, and then try performing the operation again.</p> <ul style="list-style-type: none"> <li>- When cutting Cutting paused. Resume: [OK] Stop: [STOP]</li> <li>- When drawing Drawing paused. Resume: [OK] Stop: [STOP]</li> </ul>	—

Symptom	Possible Causes (or Results)	Solutions	Reference
<b>Not all of the material to be cut is cut. Some areas remain uncut.</b>	A blade appropriate for the material being cut is not used.	Use a blade appropriate for the material being cut.	page 32
	The blade extension from the blade holder is too little.	Remove the holder from the carriage, and then adjust the blade extension.	page 33
	If cutting is not possible even though the blade extension or cutting pressure is set higher than necessary, the blade may be chipped.	Replace the blade with a new one.	page 51
	The mat's adhesive strength has decreased, or the material is not secured.	Replace the mat with a new one.	page 51
	The blade is worn.	Replace the blade with a new one.	page 51
	The material is incompatible with this machine.	Replace the material with one compatible with this machine.	page 24
	The cutting pressure is incorrect.	Adjust the setting for cut pressure in the settings screen.	page 32 page 37
	Dust or lint has accumulated in the holder.	Clean the holder.	page 53
	The spacing between arranged patterns is too small.	Rearrange the patterns to slightly separate them.	—
	Neither a high tack adhesive fabric support sheet or iron-on fabric appliqué contact sheet is used for fabric cutting.	Attach a high tack adhesive fabric support sheet to a mat or affix an iron-on fabric appliqué contact sheet to a fabric before cutting it.	page 27 page 29
	A fabric is not firmly attached to a mat that has a high tack adhesive fabric support sheet on its adhesive side.	Firmly attach the fabric to the mat pressing the handle of the included spatula across the surface of the fabric.	page 31
<b>There are deep cuts completely through the mat.</b>	An iron-on fabric appliqué contact sheet is not firmly attached to a fabric.	Iron the entire contact sheet to affix it firmly to the wrong side of the fabric.	page 28
	The blade extension from the blade holder is too much.	Remove the holder from the carriage, and then adjust the blade extension.	page 33
	The cutting pressure is incorrect.	Adjust the setting for cut pressure.	page 32 page 37

## Drawing

Symptom	Possible Causes (or Results)	Solutions	Reference
<b>The drawn line is thicker (thinner) than intended.</b>	The drawing speed or drawing pressure is incorrect.	Adjust the settings of DesignNCut Manager for draw speed and draw pressure. To draw thicker lines, increase the drawing pressure. To draw thinner lines, decrease the drawing pressure. To draw thicker lines, reduce the drawing speed. To draw thinner lines, increase the drawing speed. After adjusting the settings, perform a trial drawing operation.	page 42

## ERROR MESSAGES

The following table lists some of the messages that may appear while the machine is operating as well as their corresponding solutions.

Perform the necessary operation according to the instructions in the message or the solution described here.

If the problem persists, contact the retailer who sold you this machine or the nearest authorized service center.




### Memo

- If an error occurred, either an error message or an error code will appear on the machine in the following cases.
  - Error message: An error occurred while only the machine is being operated (Example: Pressing the “Feed” button to insert the mat failed, establishing a wireless network connection failed, etc.)
  - Error code: An error occurred while DesignNCut Manager was being used, (Example: Retrieving cutting data failed, beginning to cut/draw failed, etc.)

## Cutting Machine Error

### When Operating the Machine

Error Messages (Cutting Machine)	Causes / Solutions
Blade initialization error. Turn off the machine.	Turn the machine off, then on again.
Head initialization error. Turn off the machine.	
Mat recognition error. Press [OK] button.	Possible Causes①: The dotted marks on the part of the mat that is inserted are dirty. Solutions①: Clean the dotted marks on the mat and their surrounding area. If the mat is still not recognized, replace the mat with a new one.
	Possible Causes②: The dotted marks on the part of the mat that is inserted are hidden by material that was attached. Solutions②: Attach the material while keeping it within the adhesive area of the mat.
	Possible Causes③: The mat was inserted so that the side with the material attached is facing down. Solutions③: Insert the mat so that the side with the material attached is facing up.
	Possible Causes④: A mat that cannot be recognized has been inserted. Solutions④: Use the specially designed mat for this machine.
	Possible Causes⑤: A mat was not inserted straight into the machine. Solutions⑤: While holding the mat level and lightly inserting it into the feed slot, press  in the operation panel.
Failed to unload mat. Turn off the machine.	The material to be cut/drawn is jammed in the feeding mechanism in the machine. Press the “Feed” button while the mat is being inserted to feed it out. If the mat does not feed out, turn off the machine, and then carefully pull out the mat.



## When Setting Up the Wireless Network

Error Messages (Cutting Machine)	Cause/Solution												
Connection failed (Err-01). Press [OK] button.	The wireless network setting is not activated. Activate the wireless network.												
Connection failed (Err-02). Press [OK] button.	<p>The wireless access point/router cannot be detected.</p> <ol style="list-style-type: none"> <li>Check the following 4 points. <ul style="list-style-type: none"> <li>Make sure that the wireless access point/ router is powered on.</li> <li>Move your machine to an area with no items which obstruct the wireless network signal, such as metal doors or walls, or closer to the wireless access point/router.</li> <li>Temporarily place your machine within about 1 m (3.3 feet) from the wireless access point when you are configuring the wireless settings.</li> <li>If your wireless access point/router is using MAC address filtering, confirm the MAC address of this machine is allowed in the filter.</li> </ul> </li> <li>If you manually entered the SSID and security information (SSID/ authentication method/encryption method/Network Password (Key)), the information may be incorrect. Reconfirm the SSID and security information and re-enter the correct information as necessary.</li> </ol>												
Connection failed (Err-03). Press [OK] button.	<p>The Authentication/Encryption methods used by the selected wireless access point/router are not supported by your machine.</p> <p>For infrastructure mode, change the authentication and encryption methods of the wireless access point/router.</p> <p>Your machine supports the following authentication methods:</p> <table border="1"> <thead> <tr> <th>Authentication method</th><th>Encryption method</th></tr> </thead> <tbody> <tr> <td rowspan="2"><b>WPA-Personal</b></td><td>TKIP</td></tr> <tr> <td>AES</td></tr> <tr> <td><b>WPA2-Personal</b></td><td>AES</td></tr> <tr> <td rowspan="2"><b>Open</b></td><td>WEP</td></tr> <tr> <td>None (without encryption)</td></tr> <tr> <td><b>Shared key</b></td><td>WEP</td></tr> </tbody> </table> <p>If your problem is not solved, the SSID or network settings you entered may be incorrect. Reconfirm the wireless network settings.</p>	Authentication method	Encryption method	<b>WPA-Personal</b>	TKIP	AES	<b>WPA2-Personal</b>	AES	<b>Open</b>	WEP	None (without encryption)	<b>Shared key</b>	WEP
Authentication method	Encryption method												
<b>WPA-Personal</b>	TKIP												
	AES												
<b>WPA2-Personal</b>	AES												
<b>Open</b>	WEP												
	None (without encryption)												
<b>Shared key</b>	WEP												
Network Password (Key) error (Err-04). Press [OK] button.	The security information (SSID/Network Password (Key)) is incorrect. Reconfirm the SSID and security information (Network Password (Key)).												
Connection failed (Err-05). Press [OK] button.	The wireless security information (Authentication method/Encryption method/Network Password (Key)) is incorrect. Reconfirm the wireless security information (Authentication method/Encryption method/Network Password (Key)) in the table of Err-03.												
Connection failed (Err-20). Press [OK] button.	<p>This machine is still trying to establish a connection with the wireless network.</p> <p>Wait a while, and then check the wireless LAN connection status.</p>												
Connection failed (Err-06). Press [OK] button.	<p>This machine cannot detect a wireless LAN access point/router with WPS enabled.</p> <p>Operations must be performed on both this machine and the wireless LAN access point/router in order to use WPS to set up the wireless connection.</p> <p>For details on using WPS with your wireless LAN access point/router, refer to its manual, or contact its manufacturer or your network administrator.</p>												
Connection failed (Err-07). Press [OK] button.	<p>Two or more wireless LAN access points/routers with WPS enabled have been detected.</p> <p>Make sure that there is only one wireless LAN access point/router with WPS enabled within the signal range, and then try performing setup again.</p>												
Connection failed. Press [OK] button.	<p>Turn off your wireless LAN router, and then turn it on again.</p> <p>Then, try again to set up the wireless connection.</p>												

Error Messages (Cutting Machine)	Cause/Solution
Cannot find SSID. Press [OK] button.	<p>As shown below, the cause and solution differ depending on when this message appeared.</p> <ul style="list-style-type: none"> <li>- Appeared after running [2.Setup Wizard] to search for an SSID</li> </ul> <p>Possible Cause: Failed to detect an SSID  Solution: Check the information described for 1. of (Err-02).</p> <ul style="list-style-type: none"> <li>- Appeared when [Saved SSID] is selected in the window listing the detected SSIDs</li> </ul> <p>Possible Cause: There is no SSID previously connected to the wireless network.  Solution: Select an SSID that appeared in the window, and then set up a wireless connection.</p>
PC connection error. Press [OK] button.	<p>Failed to connect to the computer when setting up the wireless connection using the dedicated application "WLAN Assistant Wizard" (WAW).</p> <p>Check the following, and then try performing the operation again.</p> <ul style="list-style-type: none"> <li>- Start up WAW on the computer, and then follow the on-screen instructions to complete the procedure.</li> <li>- Check that a wireless network connection has been established between the computer running WAW and the access point/router.</li> </ul>
WLAN connection failed. Press [OK] button.	<p>Failed to set up the wireless connection using the dedicated application "WLAN Assistant Wizard" (WAW &lt;USB&gt;).</p> <p>Check the following, and then try performing the operation again.</p> <ul style="list-style-type: none"> <li>- Start up WAW &lt;USB&gt; on the computer, and then follow the on-screen instructions to complete the procedure.</li> <li>- Check that the machine and computer are connected with a USB cable.</li> <li>- Check the possible causes and solutions for (Err-01) to (Err-05) and for (Err-20).</li> </ul>
Network error. Turn the machine off, then on again.	<p>An internal malfunction occurred.  Contact the retailer where you purchased this machine or the nearest authorized service center.</p>

## DesignNCut Manager Error

Error Code (Cutting Machine)	Error Messages (DesignNCut Manager)	Causes / Solutions
E002	DesignNCut is unavailable while it is connecting to another DesignNCut Manager. To cancel the connection, restart DesignNCut.	Turn off the machine, turn it on again, and then make the connection again.
E003	Cannot connect to machine. Select an appropriate connection mode for the settings on DesignNCut.	<p>Select the same connection method as that selected on the machine.</p> <p>For details on selecting the same connection method as that on the machine, see "CONNECTING THE MACHINE AND COMPUTER" on page 12.</p>
E004	The version of machine and DesignNCut Manager doesn't match. Confirm the versions and update.	DesignNCut Manager and the machine's software must be updated. (P. 66)
E204	No pattern in the effective area.	<p>There is no pattern(s) to be cut out or drawn within the cutting area.</p> <p>Edit the pattern in ScanNCutCanvas to position it within the cutting/drawing area.</p>
E207	Attach an appropriate holder.	A holder incompatible with the mode has been installed. Install a compatible holder. (P. 34)
E217	Data cannot be read on DesignNCut. The file size is too big.	The data file is too large. Simplify the pattern in ScanNCutCanvas to reduce the data to 1 MB or less.
E218	Cannot continue as the data has too many objects.	There are too many patterns. Reduce the number of patterns in ScanNCutCanvas to 300 or less.

Error Code (Cutting Machine)	Error Messages (DesignNCut Manager)	Causes / Solutions
E221	This data is too intricate to be converted to a filling pattern.	Try the following. <ul style="list-style-type: none"> <li>- Ungroup the pattern.</li> <li>- Change the fill settings.</li> <li>- Reduce the number of fill patterns.</li> </ul>
		Complex patterns cannot be filled. Simplify the pattern in ScanNCutCanvas.
E225	This pattern cannot be used on your DesignNCut.	Select a different pattern.
E227	Cannot recognize the mark of a mat. Clean the mat.	Possible Cause ①: The part of the mat that is inserted is dirty. Solution ①: Clean the part of the mat that is inserted and its surrounding area.
		Possible Cause ②: Material or masking tape has been attached outside of the adhesive area of the mat, preventing it from being recognized. Solution ②: Attach the material while keeping it within the adhesive area of the mat.
E304	DesignNCut could not read the data. Register the login ID for ScanNCutCanvas again.	<ul style="list-style-type: none"> <li>- This message appears when you try to send data to a cutting machine not registered with ScanNCutCanvas.</li> <li>- Registration of your machine has been deleted from ScanNCutCanvas. Register the machine again.</li> </ul>
E306	DesignNCut is not connected to a network. Confirm wireless LAN settings on DesignNCut.	When the SSID and security information (SSID/authentication method/encryption method/network password (key)) was manually entered, incorrect information may have been entered. Check the SSID and security information again, and then enter the correct information if necessary.
E307	DesignNCut is not connected to a network. Confirm network connection status.	The machine is not connected to the network. <ul style="list-style-type: none"> <li>- Check the network connection status.</li> <li>- A network connection may not yet be established. Wait a while, and then try again.</li> </ul>
E308	A network error occurred on DesignNCut.	A network error occurred during communication. Check the following. <ul style="list-style-type: none"> <li>- Check that your wireless access point/router is turned on.</li> <li>- Check that the network cable of your wireless access point/router is plugged in.</li> </ul>
E309	Connection from DesignNCut to a server failed. Confirm proxy settings.	The proxy settings are incorrect. Check the proxy settings of your wireless network and your machine.
E313	Failed to connect to the server.	A network error occurred during communication. <ul style="list-style-type: none"> <li>- Check the DNS server settings.</li> <li>- Wait a while, and then try connecting again.</li> </ul>
E500	Failed to connect to DesignNCut.	<ul style="list-style-type: none"> <li>- Make sure that the wireless LAN access point/router has been turned on.</li> <li>- Move the machine or computer installed with DesignNCut Manager so that no objects block the signals between them, or move them closer to the wireless LAN access point/router.</li> <li>- If the wireless LAN access point/router is filtering, check the settings.</li> </ul>
E501	Communication error. Confirm proxy and other settings.	The proxy settings are incorrect. Check the proxy settings of your wireless network and DesignNCut Manager.
E502	Failed to connect to DesignNCut.	<ul style="list-style-type: none"> <li>- Make sure that the machine has been turned on.</li> <li>- Check that the wireless LAN connection indicator is lit.</li> <li>- Check the status of the network connection. A connection may not be possible because of the communication environment such as a poor signal or network congestion from crosstalk.</li> </ul>

Error Code (Cutting Machine)	Error Messages (DesignNCut Manager)	Causes / Solutions
E507	Not connected to a network.	Check the following. - Check that your wireless access point/router is turned on. - Check that the network cable of your wireless access point/router is plugged in.
E508	Wireless LAN connection failed.	The wireless connection was incorrectly set up. Check the settings for the SSID and security information (SSID/authentication method/encryption method/network password (key)).
E510	DesignNCut machine is not connected to your device. If the Wireless LAN connect light is turned on (green) on your machine, please click "Retry". If the Wireless LAN connect light is off, please click "Connect".	Firstly, check the wireless LAN connection indicator on your machine.  • When the wireless LAN connection indicator is off: Wait a while until it is turned on (green). If it is still off after waiting for a while, click [Connect] to make the connection. Make sure that the machine and PC connection must be on the same network.  • When the wireless LAN connection indicator is on (green): Click [Retry] on the screen to search your machine again. If this error message is repeatedly displayed, the machine and PC may be on different networks. Check the SSID of the machine and PC respectively as follows.  - To check the machine's SSID: From the machine's settings screen, select [1.Network], [5.Others], and then select [3.SSID]. →The machine's SSID is displayed.  - To check the computer's SSID: Mouse over the wireless LAN signal icon on the desktop. If the SSIDs are different, click [Connect] on the screen to make the connection again. Make sure that the machine and PC connection must be on the same network.  The software version of your access point/router may be outdated. Please check your router's manufacturer's website for the latest software version, and update your router. After completing the update, try to set up the wireless connection.
E512	Failed to connect to server.	Check the following. - Check that the settings for the SSID and security information (SSID/authentication method/encryption method/network password (key)) have been correctly specified. - Check the status of the network connection. - A network connection has not yet been established. Wait a while, and then try connecting again.
E513	Failed to connect to server. Confirm proxy settings.	The proxy settings are incorrect. Check the proxy settings of your wireless network and your machine.
E514	An error occurred while connecting to ScanNCutCanvas. Please check your network settings or network condition. Make sure you are connected to the Internet.	A network error occurred during communication.  Check the following. - Check that your wireless access point/router is turned on. - Check that the network cable of your wireless access point/router is plugged in.
E518	Connecting to ScanNCutCanvas failed. Register the login ID for ScanNCutCanvas again.	This message appears when you try to transfer data with a machine different than the one registered with ScanNCutCanvas. Register the machine again.

Error Code (Cutting Machine)	Error Messages (DesignNCut Manager)	Causes / Solutions
E519	Connecting to ScanNCutCanvas failed. Register the login ID for ScanNCutCanvas again.	Registration of your machine has been deleted from ScanNCutCanvas. Register the machine again.
E527	Cannot connect to machine. Select an appropriate connecting mode for the settings on DesignNCut.	Select the same connection method as that selected on the machine. For details on selecting the same connection method as that on the machine, see "CONNECTING THE MACHINE AND COMPUTER" on page 12.
E529	Communication error.	Check the following. - The machine must be turned on. - The USB cable must be correctly plugged in.
E535	Cannot read the data. The data may be corrupted.	The selected photo cannot be used. Select an image photographed under the specified conditions.
E538	Loading the image file has been failed. This file cannot be used.	The file may be corrupted. Select a different image file.
E540	Failed to load the captured image.	Make sure enough space is available on the device.
E543	Failed to register calibration data. The calibration sheet was photographed too close. Without zooming in capture the calibration sheet again. The camera frame should be filled with calibration sheet dots.	The calibration data cannot be registered. The calibration sheet was photographed too close. Select an image photographed under the specified conditions.
E544	Failed to register calibration data. The calibration sheet was photographed too far. Capture the calibration sheet again. The camera frame should be filled with calibration sheet dots.	The calibration data cannot be registered. The calibration sheet was photographed too far. Select an image photographed under the specified conditions.
E548	Failed to load the captured image. The entire mat was not photographed. Please click on "Watch Video" for solution reference, then, without zooming in capture the entire mat with the image and make sure the entire mat is within the camera frame.	The entire mat was not photographed. Take the photo without zooming and so the entire mat completely fills the camera screen.
E549	Failed to load the captured image. The photo is too small. Please click on "Watch Video" for solution reference, then, without zooming in capture the entire mat with the image and make sure the entire mat is within the camera frame.	The photo is too small. Take the photo without zooming and so the entire mat completely fills the camera screen.
E550	Failed to load the captured image. Please click on "Watch Video" for guidelines, then, capture the image again according to guidelines.	Possible Cause ①: There is a reflection on the mat scanning marks (dots) in the part of the mat that is inserted, causing the marks not to appear in the photo. Solution ①: Take the photo so there is no reflection.  Possible Cause ②: An object outside of the mat appears in the photo. Solution ②: Take the photo so no objects appear outside of the mat.  Possible Cause ③: The dotted marks on the part of the mat that is inserted are dirty. Solution ③: Clean the mat scanning marks (dots) and their surrounding areas. If the mat is still not recognized, replace it with a new one.
E551	Failed to load the captured image. The angle of the image is incorrect. Please click on "Watch Video" for guidelines, then, capture the image again according to guidelines.	The mat is at an angle. Hold the camera level when taking the photo.

Error Code (Cutting Machine)	Error Messages (DesignNCut Manager)	Causes / Solutions
E552	Failed to load the captured image.	The selected photo cannot be used. Select an image photographed under the specified conditions.
E553	Failed to save the captured image.	The camera may be set so that photographed images are not saved. Check the camera's settings. If the camera settings are correct, delete some unnecessary files since there may be no space available.
E560	DesignNCut machine is not connected to your device. Click on "Connect" to connect your DesignNCut machine.	The network connection has not been completed yet. Click [Connect] on the screen to make the connection.
E561	DesignNCut machine is not connected to your device. Please check if DesignNCut and your computer is connected with USB cable. If you connect by Wireless LAN, please click "Change the connection method" and change connection method.	<ul style="list-style-type: none"> <li>- Check that the machine and computer are connected with a USB cable.</li> <li>- Check that the machine is in USB mode.</li> </ul> For details, see "Direct PC Connection Using USB Cable (Windows Only)" on page 18.
E562	DesignNCut machine is not connected to your device. Retry the connection and refer to the Connection Guide for instructions.	You tried to connect the machine to your device without the necessary procedures. Make the connection again referring to the Connection Guide or "CONNECTING THE MACHINE AND COMPUTER" on page 12.

## UPDATING THE SOFTWARE

The machine's software can be updated using either an Internet connection or a USB cable. For update information, refer to details posted on the Brother Solutions Center (<http://s.brother/cpqaa/>).

### Update Procedure Using DesignNCut Manager

- 1 Click [DesignNCut] in the main window, and then click [Check version].

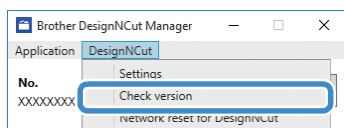


#### Note

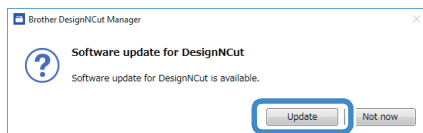
- With the mobile device version:



→ [Check version]



- 2 When the following message appears, click [Update] to retrieve the software.



#### Memo

- Do not turn off the machine while it is being updated.

- 3 When the following message appears on the machine, turn the machine off, then on again.



The update is finished. Turn the machine off, then on again.


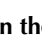


#### Memo

- If the update confirmation window appears when DesignNCut Manager is started up, update DesignNCut Manager and the machine according to the instructions that appear. If either is not updated to their most recent version, it will not be possible for DesignNCut Manager and the machine to communicate.

## Update Procedure Using Computer

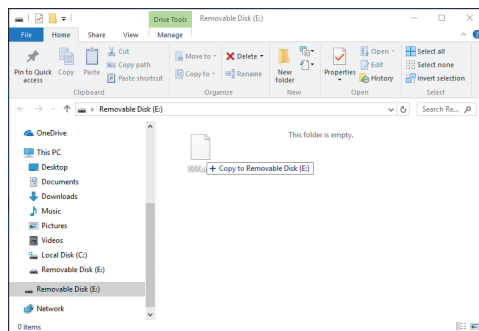
If an upgrade file is posted on the Brother Solutions Center (<http://s.brother/cpqaa/>), download the file, and then update the machine according to the following procedure.

- 1 While holding down  in the operation panel, press  to turn on the machine.
- 2 Plug the USB cable connectors into the corresponding USB ports on the computer and the machine.
  - ▶ Open the [This PC] folder on the computer, and then select [Removable Disk].
- 3 Copy the upgrade file to [Removable Disk], and then start it.

- ▶ When the following message appears, press



Prepare firmware upgrade, then press [OK] button.



#### Note

- Do not turn off the machine while it is being updated.

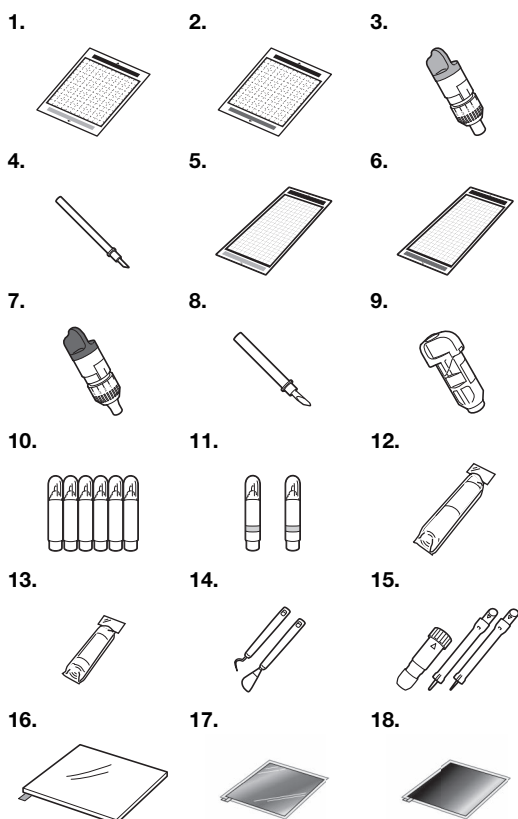
- 4 When the following message appears on the machine, turn the machine off, then on again.



The update is finished. Turn the machine off, then on again.

## OPTIONAL ACCESSORIES

The following are available as optional accessories to be purchased separately.



No.	Part Name	Part Code
1	Low tack adhesive mat 12" × 12" (305 mm × 305 mm)	CAMATLOW12
2	Standard mat 12" × 12" (305 mm × 305 mm)	CAMATSTD12
3	Standard cut blade holder (turquoise) (with no blade)	CAHLP1
4	Standard cut blade	CABLDP1
5	Low tack adhesive mat 12" × 24" (305 mm × 610 mm)	CAMATLOW24
6	Standard mat 12" × 24" (305 mm × 610 mm)	CAMATSTD24
7	Deep cut blade holder (purple) (with no blade)	CAHLF1
8	Deep cut blade	CABLDF1
9	Pen holder	CAPENHL1
10	Color pen set	CAPEN1
11	Erasable pen set	CAPEN2
12	Iron-on fabric appliqué contact sheet (white backing)	CASTBL1
13	High tack adhesive fabric support sheet	CASTBL2
14	Spatula and Hook Set	CASPHK1
15	Embossing Tool Set	CAEBSTLS1
16	Embossing Mat	CAEBSMAT1
17	Embossing Silver Metal Sheets	CAEBSSMS1

No.	Part Name	Part Code
18	Embossing Brass Metal Sheets	CAEBSBMS1

- \* Contact the retailer who sold you this machine or the nearest authorized service center.
- \* Use a mat designed specifically for this machine which has a "DesignNCut" logo. The machine will not operate correctly if any other mat is used.
- \* This product is only compatible with line embossing.
- \* For the complete list and newest information on optional accessories, refer to the Brother Solutions Center (<http://s.brother/cpqaa/>).

## PRODUCT SPECIFICATIONS

Items	Specifications
Dimensions	Approx. 497 mm (W) × 178 mm (D) × 146 mm (H) (Approx. 19.5 inches (W) × 7.0 inches (D) × 5.7 inches (H))
Weight	Approx. 3.3 kg (Approx. 7.3 lb)
Power Supply	AC100V 50/60Hz (AC adapter)
Maximum power consumption	30 W (When cutting)



# INDEX

<b>A</b>		Required material condition (capturing) .....	48
Adjusting the cut position (CaptureMat) .....	55		
Auto shut down .....	9		
<b>B</b>		<b>S</b>	
Basic pattern cutting .....	35	ScanNCutCanvas .....	3
Blade extension .....	32, 39	Registering/Changing/Deleting .....	22
<b>C</b>		Seam allowance .....	45
CaptureMat .....	48	Settings	
Carriage .....	4, 34	DesignNCut Manager .....	10
Cleaning .....	53	Machine .....	9
Cut pressure .....	32	Software update .....	66
Cutting around drawings .....	45	Speed (Cutting/Drawing) .....	11, 37
Cutting blade replacement .....	51	Standard cut blade .....	32
<b>D</b>		Standard mat .....	25
DC power jack .....	4, 54	Standard scale settings .....	32
Deep cut blade .....	32	<b>T</b>	
DesignNCut Manager .....	3	Test Cutting .....	37
Operations .....	7	Troubleshooting .....	56
Settings .....	10	<b>U</b>	
Drawing functions .....	41	USB cable connection .....	12, 18
<b>E</b>		USB port .....	66
Error messages .....	59	<b>W</b>	
<b>F</b>		Wireless LAN	
Feed slot .....	4, 35	Manual connection .....	13
Fill pattern .....	43	Resetting .....	20
<b>H</b>		WAW (USB cable) connection .....	17
High tack adhesive fabric support sheet .....	25, 29	WAW connection .....	16
Holder lock lever .....	4, 34	WPS connection .....	15
Holder setting .....	34	Wireless network .....	3, 12
<b>I</b>			
Iron-on fabric appliqué contact sheet .....	25, 27		
<b>L</b>			
Load Data .....	7, 36		
Low tack adhesive mat .....	25		
<b>M</b>			
Main power on/off .....	6		
Main power switch .....	5, 6, 35		
Main window .....	7		
Mat and material combinations .....	24		
Mat loading .....	35		
Mat unloading .....	38		
<b>O</b>			
Operation panel .....	5		
Optional accessories .....	67		
<b>P</b>			
Parts and functions .....	4		
Pressure (Cutting/Drawing) .....	11, 32, 37		
Preview window .....	8		
<b>R</b>			
Replacement criteria .....	51		

Please visit us at <http://s.brother/cpqaa/> where you can get product support and answers to frequently asked questions (FAQs).

This machine is approved for use in the country of purchase only. Local Brother companies or their dealers will only support machines purchased in their own countries.