

Be sure to first read the "Important Safety Instructions" in the Product Safety Guide.  
This Quick Reference Guide contains basic instructions and information for your Brother machine.

**Before starting up with this guide, be sure to read Setup Guide to setup your machine.**

For more advanced instructions and information see the Operation Manual at <http://s.brother/cpqaa/>

Store this Quick Reference Guide in a safe place, where it can be easily accessed for future reference.



XG8352-001

- **Use a blade and mat combination appropriate for the material to be cut, as indicated in the following table.**  
(Depending on your machine model, additional purchases may be required.) In addition, adjust the blade extension and cutting pressure.

## STEP1 Selecting the Mat that is Appropriate for the Material

- This table provides general guidelines. Before making your project, test by attaching the same material.

Material and its thickness		Mat		Sheet for fabric cutting	
		Standard mat	Low tack adhesive mat	Iron-on fabric appliqué contact sheet (white backing)	High tack adhesive fabric support sheet
Paper	Printer paper	80 g/m <sup>2</sup> (0.1 mm)	✓	✗	
	Scrapbook paper (thin)	120 g/m <sup>2</sup> (0.15 mm)	✓	✗	
	Scrapbook paper (medium-thick)	200 g/m <sup>2</sup> (0.25 mm)	✓	✗	
	Cardstock (thin)	200 g/m <sup>2</sup> (0.25 mm)	✓	✗	
	Cardstock (medium-thick)	280 g/m <sup>2</sup> (0.35 mm)	✓	✗	
	Vellum, tracing paper	0.07 mm	✓	✗	
	Poster board (thin)	280 g/m <sup>2</sup> (0.35 mm)	✓	✗	
	Poster board (thick)	400 g/m <sup>2</sup> (0.5 mm)	✓	✗	
	Thin cotton fabric (for quilt piece)	0.25 mm	✓	✗	✓
	Thin cotton fabric (except for quilt piece)	0.25 mm	✓	✗	✓
Fabric	Flannel (for quilt piece)	0.6 mm	✓	✗	✓
	Flannel (except for quilt piece)	0.6 mm	✓	✗	✓
	Felt	1 mm	✓	✗	✓
	Denim 14 oz	0.75 mm	✓	✗	✓
	Plastic sheet (PP)	0.2 mm	✓	✗	
Others	Vinyl	0.2 mm	✓	✗	
	Magnet	0.3 mm	✓	✗	
	Sticker or seal	0.2 mm	✓	✗	

## STEP2 Instructions for Attached the Material to the Mat

### Note: Important-Please Read

- Craft paper or fabric covered with a decorative layer (that can easily separate) such as lamé or foil is not recommended.
- Adhere only 1 layer of material to the mat.

### With Fabric

After referring to the table above, use a sheet for fabric cutting.  
Refer to the instructions included with the above sheet for details.

Iron-on fabric appliqué contact sheet:

- Reinforces the fabric so that various patterns can be cut out.
- Original texture may change because it remains attached to the back of fabric.

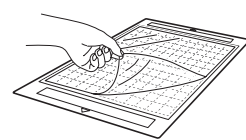
\* For use with the standard mat. Do not place fabric backed with iron-on contact sheet directly onto a mat with high tack fabric support sheet.

High tack adhesive fabric support sheet:

- By attaching this adhesive sheet to the standard mat, the adhesive strength of the mat is increased.
- Depending on the shape, the pattern may not be cleanly cut.

### With Paper

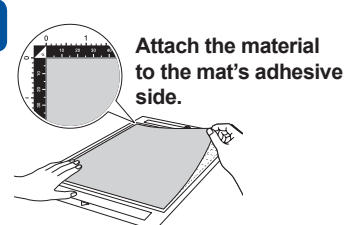
1



Peel off the protective sheet.

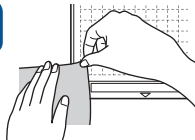
- \* Do not discard the protective sheet.
- \* In order to maintain the adhesive strength, attach the protective sheet to the adhesive side of the mat after use.

3



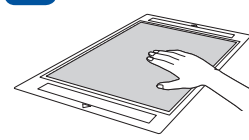
Attach the material to the mat's adhesive side.

2



Before attaching the material to the mat, use a corner of the adhesive side of the mat to test attaching it.

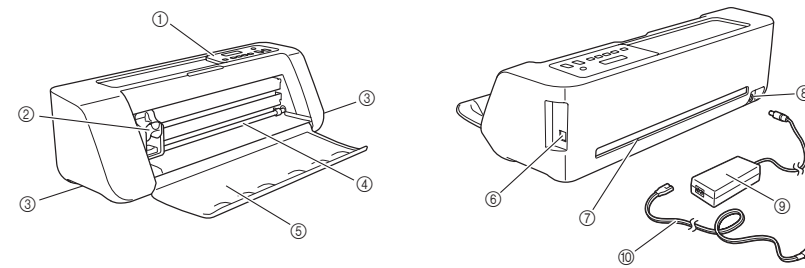
4



Firmly attach all of the material to the mat.

- \* Make sure that there are no wrinkles or bubbles in the material and all the material edges are secured to the mat.

## The Main Parts



- ① Operation Panel
- ② Carriage
- ③ Grips
- ④ Feed Slot Roller
- ⑤ Front Tray Cover
- ⑥ USB Port (for PC Connectivity)
- ⑦ Slot
- ⑧ DC Power Jack
- ⑨ AC Adapter
- ⑩ AC Power Cord

## STEP3 Selecting the Blade and a Holder Appropriate for the Material

- This table provides general guidelines. Before making your project, perform trial cutting with the same material.

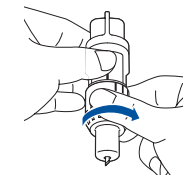
Material and its thickness		Blade scale setting	Cut pressure setting	Cutting blade	
				Standard cut blade (turquoise)	Deep cut blade (purple)
Paper	Printer paper	80 g/m <sup>2</sup> (0.1 mm)	3	-1	✓
	Scrapbook paper (thin)	120 g/m <sup>2</sup> (0.15 mm)	3.5	0	✓
	Scrapbook paper (medium-thick)	200 g/m <sup>2</sup> (0.25 mm)	4	0	✓
	Cardstock (thin)	200 g/m <sup>2</sup> (0.25 mm)	4	0	✓
	Cardstock (medium-thick)	280 g/m <sup>2</sup> (0.35 mm)	5	0	✓
	Vellum, tracing paper	0.07 mm	3	0	✓
	Poster board (thin)	280 g/m <sup>2</sup> (0.35 mm)	5.5	0	✓
	Poster board (thick)	400 g/m <sup>2</sup> (0.5 mm)	7.5	4	✓
	Thin cotton fabric (for quilt piece)	0.25 mm	4	4	✓
	Thin cotton fabric (except for quilt piece)	0.25 mm	4	4	✓
Fabric	Flannel (for quilt piece)	0.6 mm	6.5	4	✓
	Flannel (except for quilt piece)	0.6 mm	6.5	4	✓
	Felt	1 mm	5	5	✓
	Denim 14 oz	0.75 mm	5.5	6	✓
Others	Plastic sheet (PP)	0.2 mm	4	0	✓
	Vinyl	0.2 mm	4	0	✓
	Adhesive Craft Vinyl (backing sheet : 0.1 mm)	0.07 mm	1.5 *	-1	✓
	Magnet	0.3 mm	5.5	0	✓
	Sticker or seal	0.2 mm	4	0	✓
	Sticker Sheet (backing sheet : 0.15 mm)	0.15 mm	2 *	-1	✓

## STEP4 Adjusting the Blade Extension



Remove the protective cap.

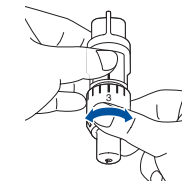
- \* After use, be sure to retract the blade into the holder and attach the protective cap.



Fully turn the cap to the right to extend the blade tip to its maximum.

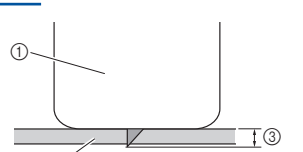
### Note

- After adjusting the blade extension, perform trial cutting (test cut) (Refer to the back of this sheet).



Adjust the blade extension to the appropriate setting within the red box in the table above.

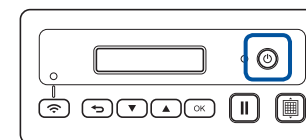
- \* If the material is not cut cleanly, even after adjusting the setting, increase the setting in increments of 0.5. If material is cut after increasing the setting by more than 0.5, too much of the blade may be extended, causing it to break. If the blade breaks, it may no longer be able to cut.



- ① End of holder cap
- ② Material that will be cut
- ③ Length of blade tip

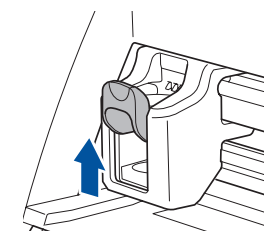
\* The blade can cut even though it only slightly extends from the holder. If too much of the blade extends, it may break.

## STEP5 Installing the Holder

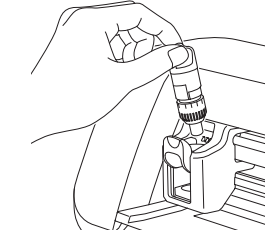


Turn on the machine.

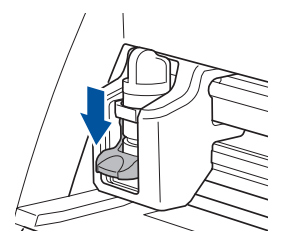
- \* Be sure to turn on the machine before installing the holder. If the holder is installed while the machine is off, the blade may break.



Raise the holder lock lever.



Insert the holder into the carriage.



Push down on the holder lock lever.

STEP6 Cutting (Trial Cutting)

Here, we will explain how to use DesignNCut Manager (application for selecting cut settings) to send patterns edited in ScanNCutCanvas to the machine as well as the basic cutting operation. In order to check that the material will be cut properly, be sure to first perform trial cutting (test cut).

The icons at the beginning of each step indicate the following operation information.

- : Operation performed on the machine
- : Operation performed in DesignNCut Manager (application for selecting cut settings)
- : Operation performed in ScanNCutCanvas

1

Hold the mat level and insert it.  
\* Insert the mat so that it is tucked under the feed rollers. Please make sure the mat is sitting in between the notches on the left and right side for even feeding.

2

Press "Feed Button" to load the mat.

Log in to ScanNCutCanvas.  
(<http://ScanNCutCanvas.Brother.com/>)  
\* New users must create a free ScanNCutCanvas account.

3

Click [New], and then select a pattern from the list and drag it into the editing area.  
\* For details on using ScanNCutCanvas, refer to the Help for ScanNCutCanvas. The Help can be displayed by clicking at the top of the screen when using a computer.

When you have finished editing the pattern, click [Download] to download it to the machine.  
\* Please check your material size before downloading the pattern to the DesignNCut Manager.  
\* The pattern can be downloaded in either of the following two ways.

**Downloading a pattern using a wireless connection**

1

Click [DesignNCut Transfer] to download the cutting data to the machine.

2

Click [Load data] in the main window, and then click [Load from ScanNCutCanvas] to import the pattern.

**Downloading a pattern using a USB cable**

For details on downloading a pattern using a USB cable, refer to the Operation Manual.

4

Select [ON] under [Test Cut], and then click [Test cut settings] in the pattern preview screen to display the trial cutting (test cut) settings screen. Select the pattern for trial cutting (test cut), reposition it so it will not overlap the project pattern, and then click [OK].

5

Select [Cut] for [Operation]. Check the table under "STEP3 Selecting the Blade and a Holder Appropriate for the Material" on the front of this sheet, set the cutting pressure, and then click [Apply].

6

Click [Start] to begin cutting.  
\* Before beginning to cut, make sure that there are no objects around the machine.

7

When cutting is finished, press "Feed Button" to feed out the mat.

8

Use the spatula to peel off the cutout pattern.

If there is a faint trace of the cut in the mat surface after peeling off material that has been cut, the blade extension is correct. If the material could be cut cleanly, load the mat with the material attached, click [Restart] in the application, or touch the "OK" key on the machine to cut the material.

If the material could not be cut cleanly, click [Stop] in the application, and then refer to "STEP4 Adjusting the Blade Extension" on the front of this sheet and adjust the blade extension. Next, return to step **5**, select a different trial cutting (test cut) pattern, and then perform trial cutting (test cut) again.

Cleaning the Holder

If fabric scraps or lint accumulates inside the holder, the machine may not operate correctly. Clean the holder after every use.

Twist off the holder cap to remove it.

Using a commercially available brush, clean off cuttings, lint and dust.  
\* Do not touch the blade.

Making Clean Cuts

■ Cutting process

This machine makes cuts by pressing a blade against the material through pressure applied to the end of the holder. **A**  
If the blade extension or cutting pressure is not set appropriately for the material, the following problems may occur.

Fig.	Cause	Problem
<b>B</b>	Blade extension too large	The blade penetrates the mat, damaging the blade and mat. When cutting flexible material, the material is crushed when pressure is applied. Adjust the blade so it does not extend too much.
<b>C</b>	Blade extension too small	The blade does not extend into the material, and the cut is not clean.
<b>D</b>	Pressure too light	Since the blade does not extend into the material, the cut is not clean.
<b>E</b>	Pressure too strong	When the blade is strongly pressed against the material, the material may lift off the mat.

■ Troubleshooting (cutting results)

Fig.	Cutting results	Adjustment procedure
<b>F</b>	Part of the material is not cut.	Adjust the cutting pressure. Increase the cutting pressure by 1, and then perform trial cutting.
<b>G</b>	The entire pattern is not cut.	Adjust the blade extension. Increase the blade extension by <b>0.5</b> a marking, and then perform trial cutting.

For additional information, refer to frequently asked questions (FAQs) on the Brother Solutions Center (<http://s.brother/cfqaa>). If the problem persists, contact the retailer who sold you this machine or the nearest authorized service center.

**A**

①Pressure  
②Cutting blade  
③Material  
④Mat

**B**

**C**

**D**

**E**

**F**

**G**

The illustrations are simply representative; the shapes of the actual parts may differ.