

EN Embossing Tool Set

About the Embossing Tool Set

By using the embossing tools with the cutting machine, you can create embossing by pressing a pattern into the material* for either a recessed effect or, by flipping over the material, a raised effect.

Use this kit to create custom embossed projects.

- * Use paper and metal sheet only for the material.

About region embossing

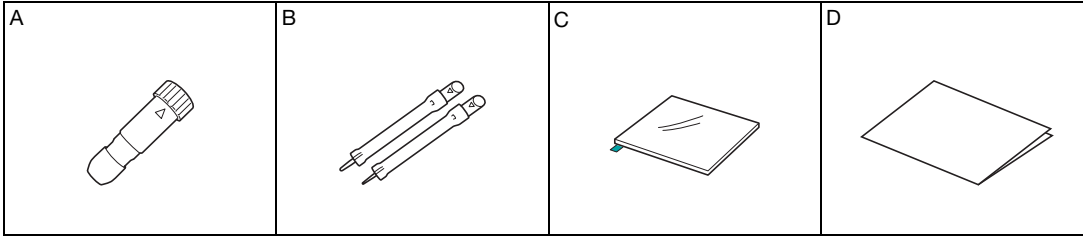
- For details on the region embossing procedure, refer to “Consumables & Options” at the Brother Solutions Center (<http://s.brother/ccoab/>).
- The following optional accessories will be necessary for region embossing.
 - Embossing template sheets (CAEBSTS1) (F)
 - Scanning support sheet (CASTCL1 (stencil sheet)) (G)

Precautions

- When embossing metal sheets, be sure to use genuine Brother metal sheets. Metal sheets can be purchased as optional accessories. CAEBSSMS1 (embossing silver metal sheets) or CAEBSBMS1 (embossing brass metal sheets). (E)
- Do not insert any object other than the embossing tools into the embossing tool holder.
- Do not cut while using the embossing mat.
- If the adhesive strength of the embossing mat is reduced, lightly wipe it with a wet wipe (recommended to use an alcohol-free wet wipe), to remove any dust or dirt. After wiping the mat, be sure to allow it to dry. If the mat becomes wet, its surface will become brittle.
- If material can no longer be attached to the embossing mat, replace the mat with a new one.
- Without peeling the embossing mat off the cutting mat, affix the protective sheet for the cutting mat before storing the mats.
- Do not store in a location exposed to direct sunlight, high temperatures or high humidity.
- Use in an environment between 10 °C and 35 °C (50 °F and 95 °F).
- For detailed instructions on using the cutting machine, refer to the Operation Manual supplied with it.
- The contents of this document are subject to change without notice.
- The screens in this manual are for illustration purposes only and may differ from the actual screens.

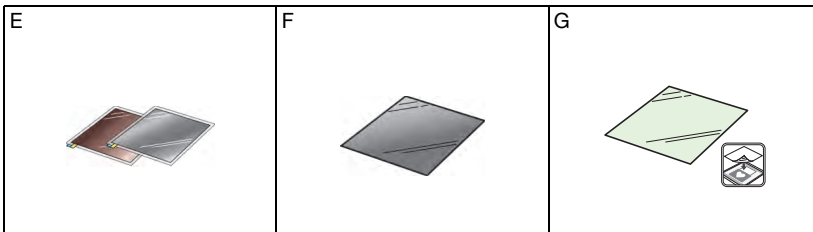
Accessories

After purchasing this kit, check the contents.



Name	
A	Embossing tool holder
B	Embossing tools (diameter 1.5 mm and 3 mm)
C	Embossing mat 12" × 9.5" (305 mm × 241 mm)
D	Insertion

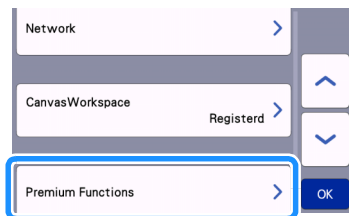
The following are available as optional accessories to be purchased separately. For purchase options, contact the retailer where this set was purchased.



Name	
E	Metal sheets with self-adhesive protective sheets (silver and brass color) 7.9" × 6.1" (200 mm × 155 mm) (thickness 0.1 mm)
F	Template sheet 12" × 12" (305 mm × 305 mm)
G	Scanning support sheet 12" × 12" (305 mm × 305 mm)

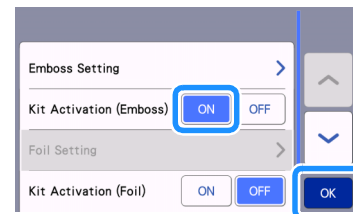
Activating the Embossing function on the machine

1 Touch "Premium Functions" on the settings screen.



2 Select "ON" beside "Kit Activation (Emboss)".

- As a default, this function is set to "OFF".



Line embossing

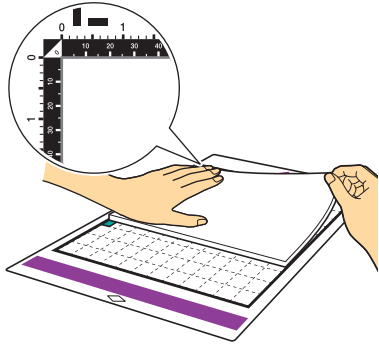
In this manual, the embossing effect created using the lines of a pattern is called line embossing.

■ Precautions

- With line embossing, only use paper with a thickness of 0.5 mm or less or metal sheets with a thickness of 0.2 mm or less.
- The procedure for metal sheets uses genuine Brother metal sheets.

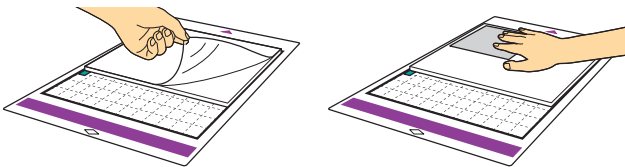
1 With the tab on the embossing mat at the bottom left, attach the green side to the standard tack adhesive mat or the low tack adhesive mat.

- We recommend attaching it to a new cutting mat.
- Attach the embossing mat so it does not extend from the attaching area of the cutting mat.



2 Peel the protective sheet from the embossing mat, and then attach the material (side to be embossed facing down) to the mat.

- Position the material so the area to be embossed fits within the embossing mat.

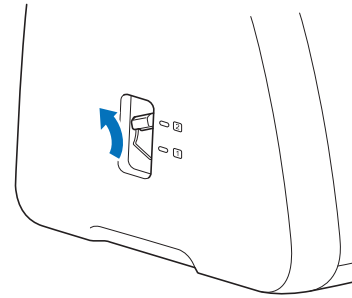



2 (With metal sheets) Peel the protective sheet from the embossing mat, and then attach the metal sheet (with the protective sheets attached and the tabs at the bottom) to the mat.

- Using a metal sheet without the protective sheets, may result in damage of the emboss tool or the cutting machine.
- Before cutting the metal sheet, emboss it, and then peel off both protective sheets. Before embossing the remainder of the metal sheet, affix a protective sheet to each side.

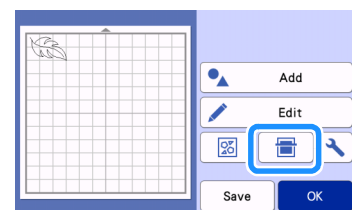
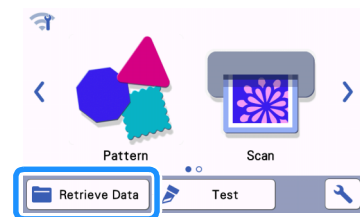


3 Set the elevation lever on the left side of the machine to the "2" position.



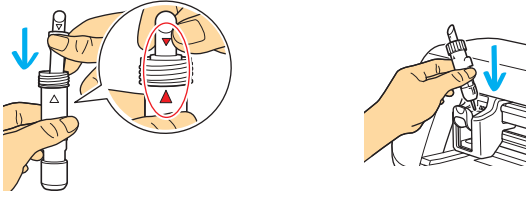
4 Retrieve the embossing pattern in the cutting machine, and then feed in the mat and touch  to scan the material.

- Flip asymmetrical (mirror image) patterns to create the embossed effect on the front surface of the material.
- Position the pattern so it does not extend from the material. If the embossing tool touches the embossing mat, the mat may be damaged.
- If the pattern extends out of the scanned material shown on the LCD display screen, touch the "Edit" key to adjust the position or size of the pattern.

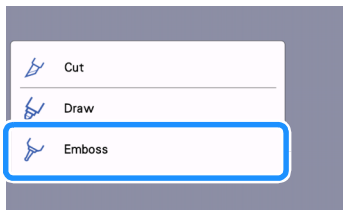
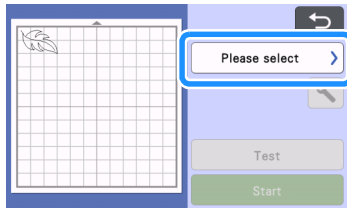



5 Remove the embossing tool holder cap. Select the embossing tool according to the line thickness that you want to emboss, and then insert the embossing tool into the embossing tool holder so that ▼ on the tool aligns with ▲ on the holder. After securing the holder cap, insert the holder into the cartridge.

- Before inserting the holder into the cartridge, check if the tool moves up and down in the holder. If the tool moves, remove the cap, and then attach it again.



6 Select "Emboss" on the preview screen.

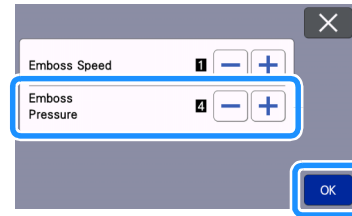
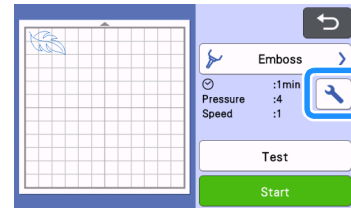


7 Touch , and then specify the setting for "Emboss Pressure".

- The recommended embossing pressure differs depending on the material and embossing tool diameter. Refer to the following table when adjusting the setting.

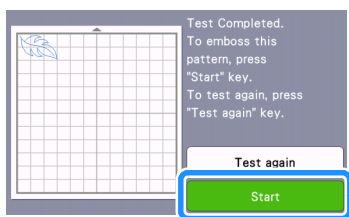
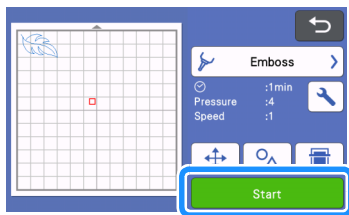
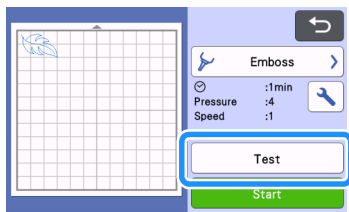
Material	Thickness	Embossing Pressure	
		1.5 mm tool	3 mm tool
Paper (thick)	0.25 mm	4	4
Metal sheets	-	0	0
Paper (thin)	0.1 mm	-6	-4

- This table of values provides general guidelines. Before making your project, perform trial embossing with the same material.



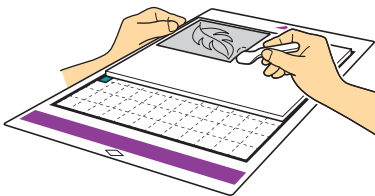
8 Touch the "Test" key to make a trial embossing. Check the result of the test embossing, and if there are no problems, touch the "Start" key.

- If the desired embossing effect is not achieved, adjust the embossing pressure. The embossing effect differs depending on the type and thickness of the material.
- Some materials may tear if the embossing pressure is too strong or the embossing speed is too fast.



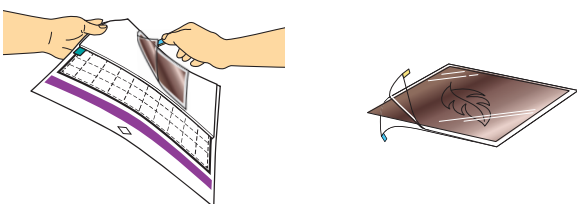
9 Use the spatula to carefully peel the material from the embossing mat.

- Always remove the embossing tool holder from the carriage after use and close the front tray of the machine.



9 (With metal sheets) Remove the metal sheet (with the protective sheets attached) from the embossing mat, and then peel both of the protective sheets from the metal sheet by using the tabs.

- When peeling the metal sheet from the protective sheets, do not touch the edges of the metal sheet, otherwise injuries may result.



Troubleshooting

1. Embossing is not clear.

- If the embossing depth is insufficient, increase the embossing pressure.
- If the edges are not clear, decrease the inward offset on the region emboss settings screen. However, if the offset is too small, embossing cannot be completed correctly.

2. The material tears.

- If the material tears, decrease the embossing pressure.

If you need additional help, the Brother Solutions Center offers the latest FAQs and troubleshooting tips. Visit us at "<http://s.brother/cfoag/>".