

Quick Reference Guide

Hızlı Referans Kılavuzu

คู่มืออ้างอิงฉบับย่อ

快速操作指南

快速導覽手冊

빠른 설정가이드

brother



Be sure to read this document before using the machine.
We recommend that you keep this document nearby for future reference.

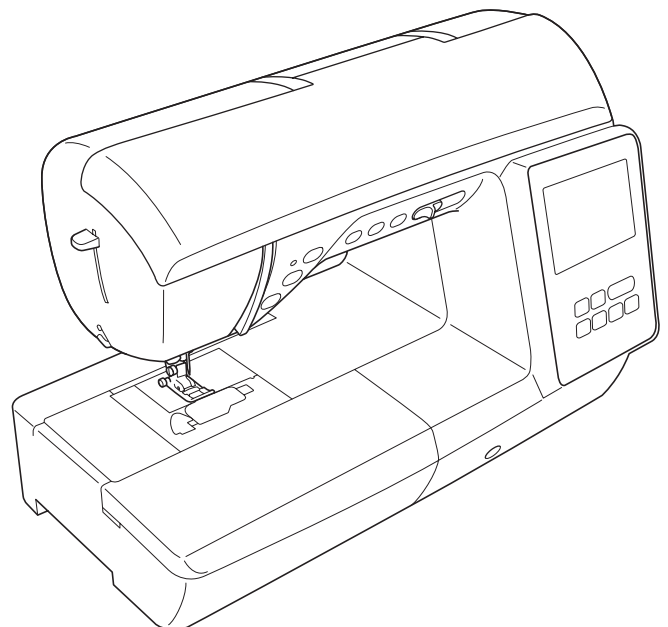
Makineyi kullanmadan önce bu belgeyi mutlaka okuyun.
Daha sonra referans olması açısından bu belgeyi saklamanızı öneririz.

โปรดอ่านเอกสารนี้ก่อนที่จะใช้เครื่อง
ขอแนะนำว่าคุณควรเก็บเอกสารนี้ไว้ใกล้มือเพื่อใช้อ้างอิงในอนาคต

使用机器前请务必阅读本资料。
我们建议就近保存本资料以供今后参考。

使用本機前，請務必仔細閱讀本文件。
建議妥善保管本文件，以供日後參考。

기기를 사용하기 전에 이 문서를 꼭 읽으세요.
이 문서는 나중에 참조할 수 있도록 제품 가까이 둘 것을 권장합니다.



Before using your machine for the first time please read the “IMPORTANT SAFETY INSTRUCTIONS” in the Operation Manual.

Refer to the Operation Manual for detailed instructions.

In this guide, English screens are used for basic explanations.

For details on the built-in embroidery patterns, refer to the Embroidery Design Guide.

Makinenizi ilk defa kullanmadan önce, Kullanım Kılavuzu’ndaki “ÖNEMLİ GÜVENLİK TALİMATLARI”nı lütfen okuyun.

Detaylı talimatlar için kullanım kılavuzuna bakın.

Bu kılavuzda, temel açıklamalar için İngilizce ekranlar kullanılmaktadır.

Dahili nakış desenleriyle ilgili detaylar için, Nakış Tasarım Kılavuzuna bakın.

ก่อนที่จะใช้เครื่องเป็นครั้งแรก โปรดอ่าน “คำแนะนำด้านความปลอดภัยที่สำคัญ” ในคู่มือการใช้
โปรดดูคู่มือการใช้เพื่อดูคำแนะนำโดยละเอียด ในคู่มือนี้ จะใช้หน้าจอ
ภาษาอังกฤษเพื่อการอธิบายขั้นพื้นฐาน สำหรับรายละเอียดเกี่ยวกับ
แพทเทิร์นลายปักที่มีในตัวเครื่อง โปรดดูคู่มือการออกแบบการปัก (Embroidery Design Guide)

在首次使用本机前，请仔细阅读使用说明书中的“安全须知”。

请参见使用说明书了解详细说明。

在本指南中，使用英语画面进行基本说明。

有关内置绣花花样的详细信息，请参见绣花设计指南。

第一次使用縫紉機之前，請閱讀使用說明書中的「安全須知」。

如需詳細指示，請參考使用說明書。

在本手冊中，基本說明均以英文畫面為準。

如需關於內建刺繡花樣的詳細資訊，請參考刺繡設計手冊。

기기를 처음 사용하기 전에 작동 설명서의 “중요 안전 수칙” 을 읽어보세요.

자세한 지침은 작동 설명서를 참조하세요.

본 안내서에서는 영어 화면이 기본 설명에 사용됩니다.

기본 제공 자수 패턴에 대한 자세한 내용은 자수 디자인 안내서를 참조하세요.

Contents

Bobbin Winding and Setting	3
Upper Threading.....	5
Selecting and Sewing Stitch Patterns	7
◆ Utility Stitches	7
◆ Decorative Stitches.....	8
◆ Character Stitches.....	8
Summary of Stitch Patterns.....	9
◆ Utility Stitches	9
◆ Decorative Stitches.....	10
◆ Character Stitches.....	11
Preparing to Embroider	17
Selecting Embroidery Patterns.....	19

สารบัญ

เครื่องม้วนกระสวยและพันจักร	3
การร้อยด้ายบน	5
การเลือกและแพทเทิร์นการเย็บ.....	7
◆ ตะเข็บใช้งาน.....	7
◆ ตะเข็บตกแต่ง.....	8
◆ ตะเข็บตัวอักษร	8
สรุปแพทเทิร์นตะเข็บ	9
◆ ตะเข็บใช้งาน.....	9
◆ ตะเข็บตกแต่ง.....	10
◆ ตะเข็บตัวอักษร	11
การเตรียมสำหรับการปัก	17
การเลือกแพทเทิร์นลายปัก.....	19

目錄

梭子繞線與設定	3
穿上線	5
選擇並縫紉花樣	7
◆ 實用針趾	7
◆ 裝飾性針趾.....	8
◆ 文字針趾	8
針趾花樣概要	9
◆ 實用針趾	9
◆ 裝飾性針趾.....	10
◆ 文字針趾	11
準備刺繡	17
選擇刺繡花樣	19

İçindekiler

Masura Sarma ve Ayarlar	3
Üst İpliğin Takılması	5
Desenlerin Seçimi ve Dikimi.....	7
◆ Yararlı Dikişler	7
◆ Dekoratif Dikişler	8
◆ Karakter dikişleri.....	8
Dikiş Desenlerinin Özeti	9
◆ Yararlı Dikişler	9
◆ Dekoratif Dikişler	10
◆ Karakter dikişleri.....	11
Nakış İşlemeye Hazırlanmak	17
Nakış Desenlerinin Seçimi.....	19

目錄

梭芯繞線和設置	3
面線穿線	5
選擇并縫制花樣	7
◆ 實用針趾	7
◆ 裝飾針趾	8
◆ 文字針趾	8
針趾花樣概述	9
◆ 實用針趾	9
◆ 裝飾針趾	10
◆ 文字針趾	11
準備绣花	17
選擇绣花花樣	19

목차

밀실 감기 및 설정	3
윗실 끼우기	5
패턴 선택 및 재봉.....	7
◆ 실용 재봉	7
◆ 장식 재봉	8
◆ 문자 재봉	8
재봉 패턴 요약.....	9
◆ 실용 재봉	9
◆ 장식 재봉	10
◆ 문자 재봉	11
자수 준비	17
자수 패턴 선택.....	19



Bobbin Winding and Setting

Masura Sarma ve Ayarlar

เครื่องม้วนกระสวยและพันจักร

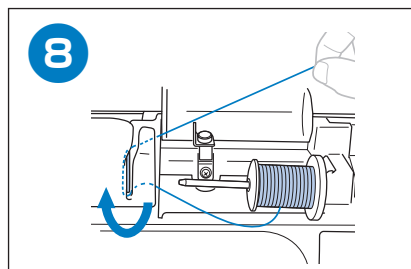
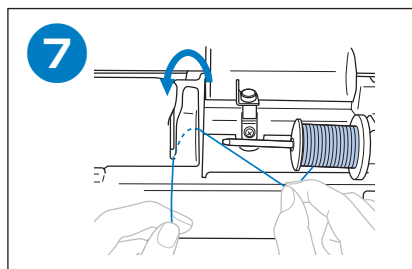
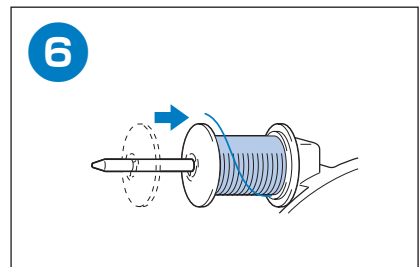
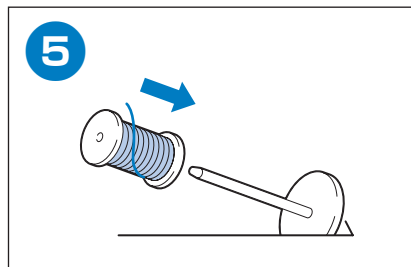
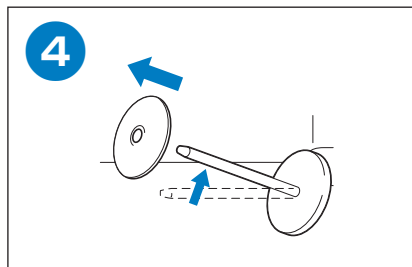
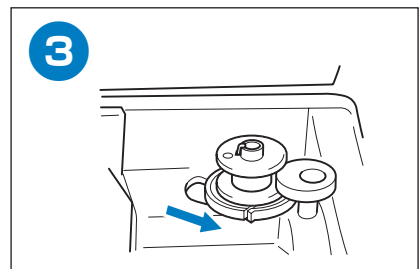
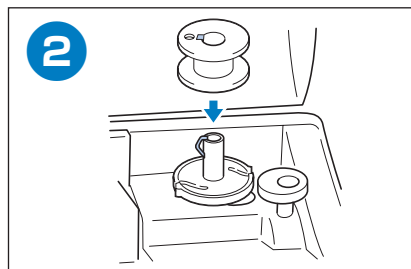
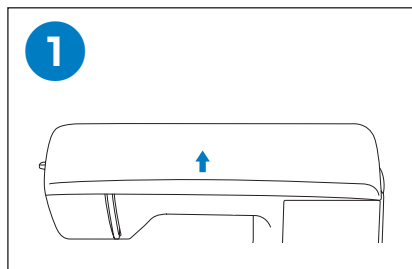
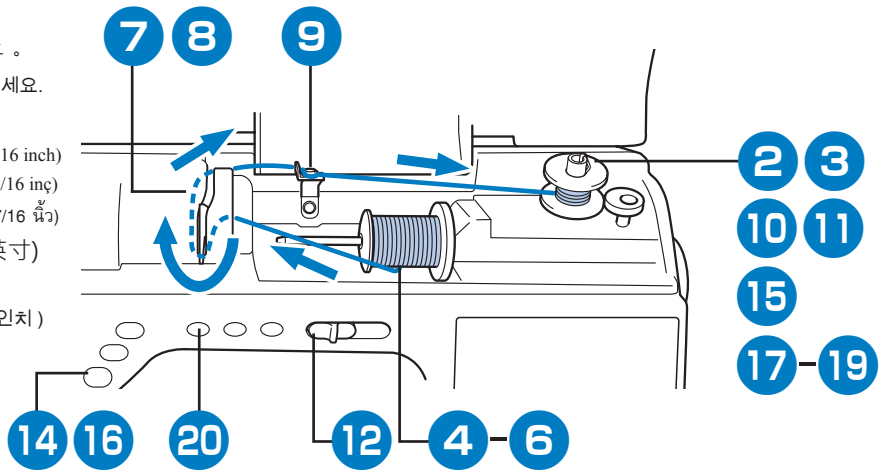
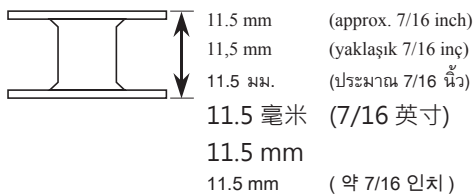
梭芯绕线和设置

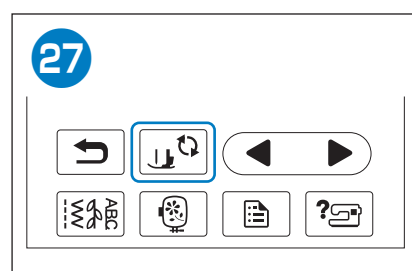
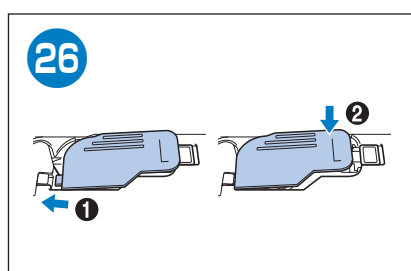
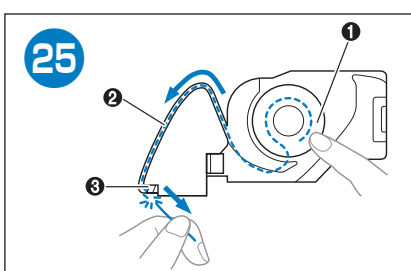
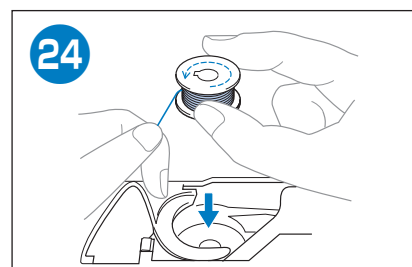
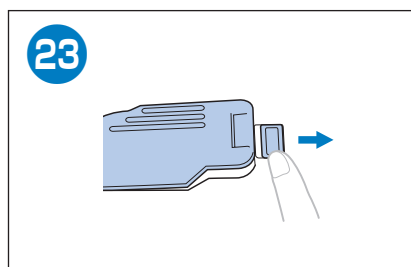
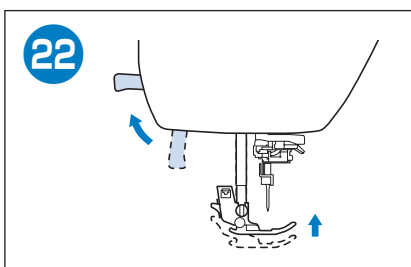
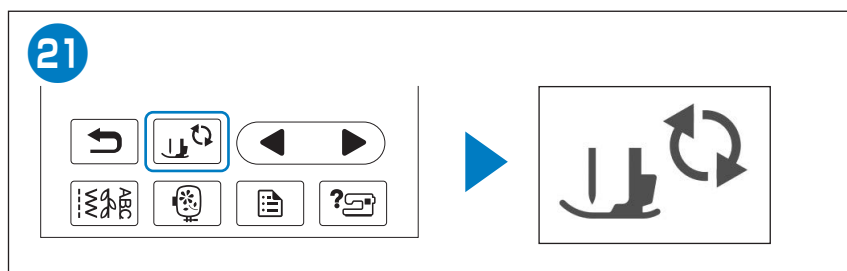
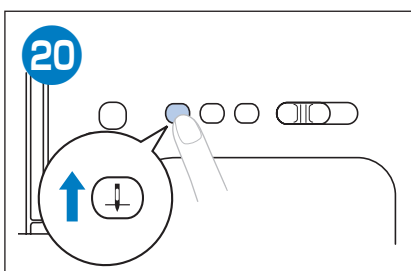
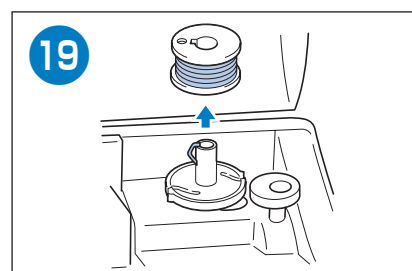
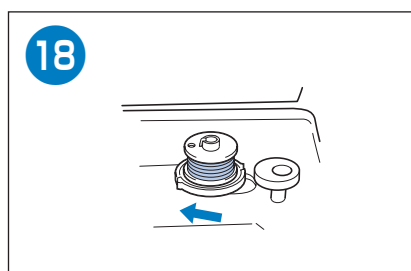
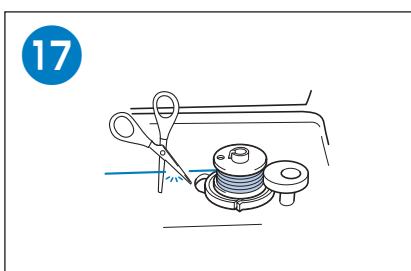
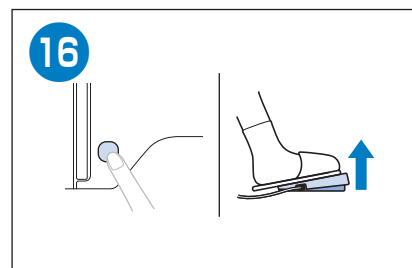
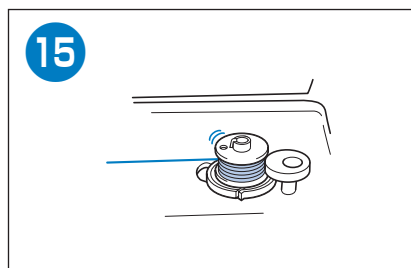
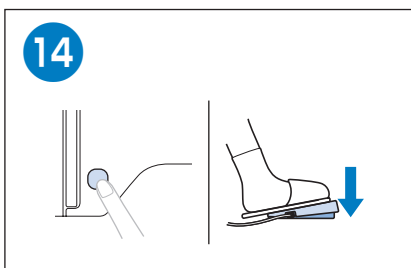
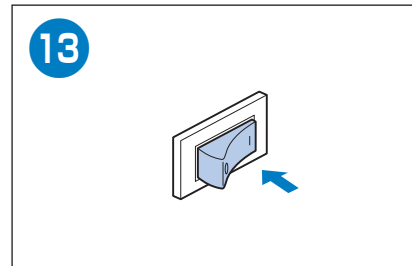
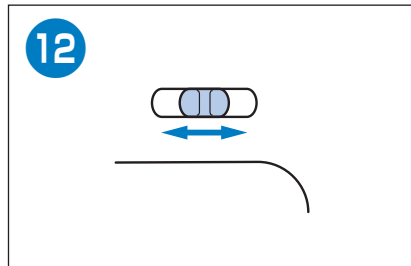
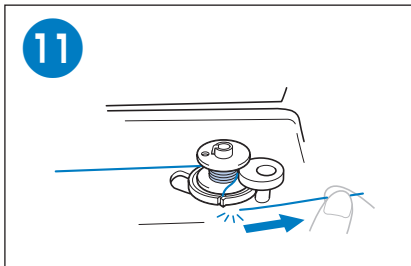
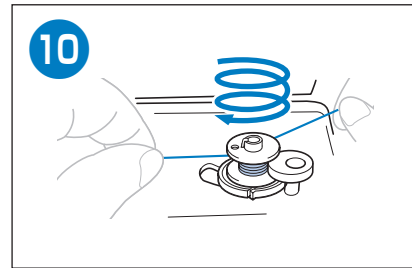
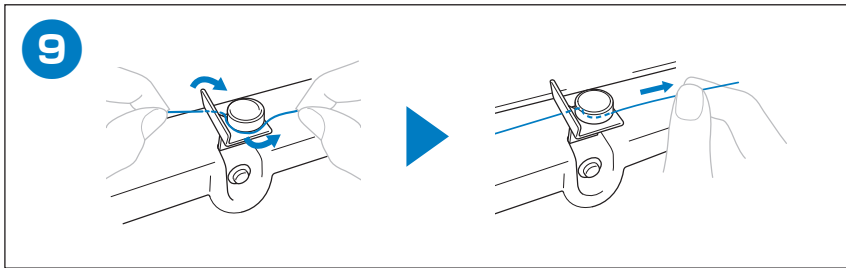
梭子繞線與設定

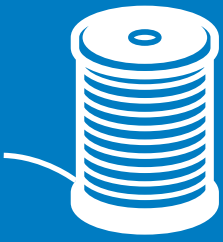
밀실 감기 및 설정

Follow the steps below in numerical order. Refer to the Operation Manual for detailed instructions.
 Sayısal olarak sıralanmış aşağıdaki adımları izleyin. Detaylı talimatlar için kullanım kılavuzuna bakın.
 ทำตามขั้นตอนด้านล่างตามลำดับหมายเลข โปรดดูคู่มือการใช้เพื่อดูคำแนะนำโดยละเอียด
 按照以下数字编号的顺序进行操作。请参见使用说明书了解详细说明。
 依序按下列編號步驟進行。如需詳細指示，請參考使用說明書。
 번호 순서대로 아래의 단계를 따르세요. 자세한 지침은 작동 설명서를 참조하세요.

Use only the included bobbin or bobbins of the same type.
 Sadece verilen masura ya da aynı tipteki masuraları kullanın.
 ใช้เฉพาะกระสวยที่มีให้หรือกระสวยประเภทเดียวกันเท่านั้น
 只能使用所附带的或同类型的梭芯。
 只能使用隨附的梭子或相同類型的梭子。
 포함된 실토리 또는 동일 유형의 실토리만 사용하세요.







Upper Threading

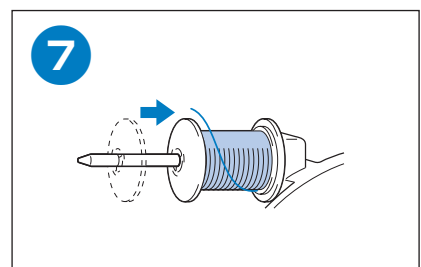
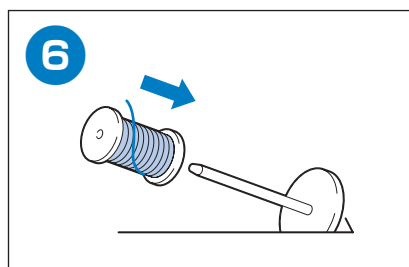
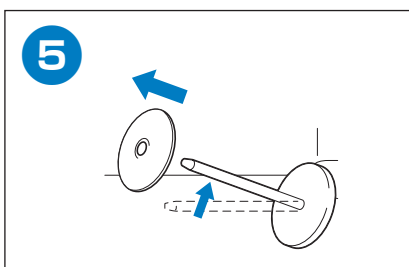
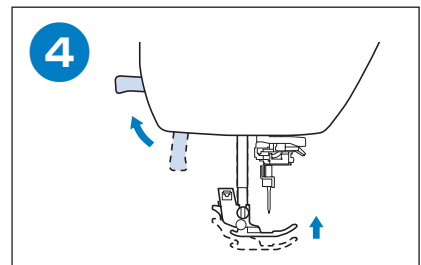
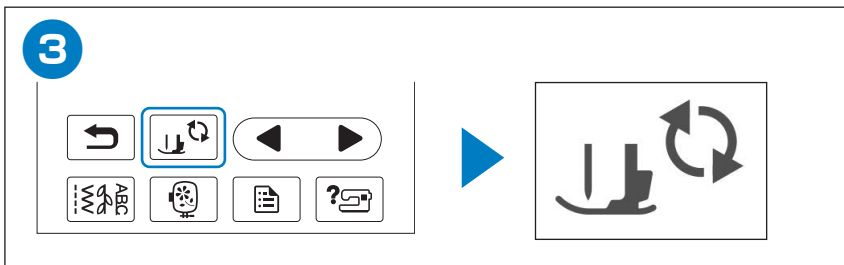
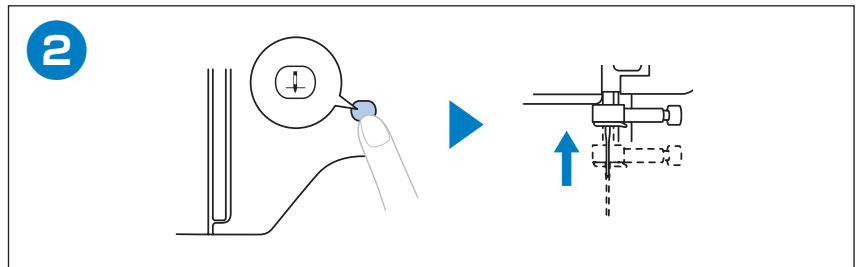
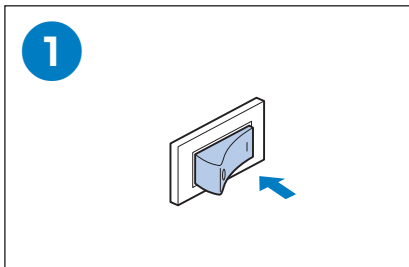
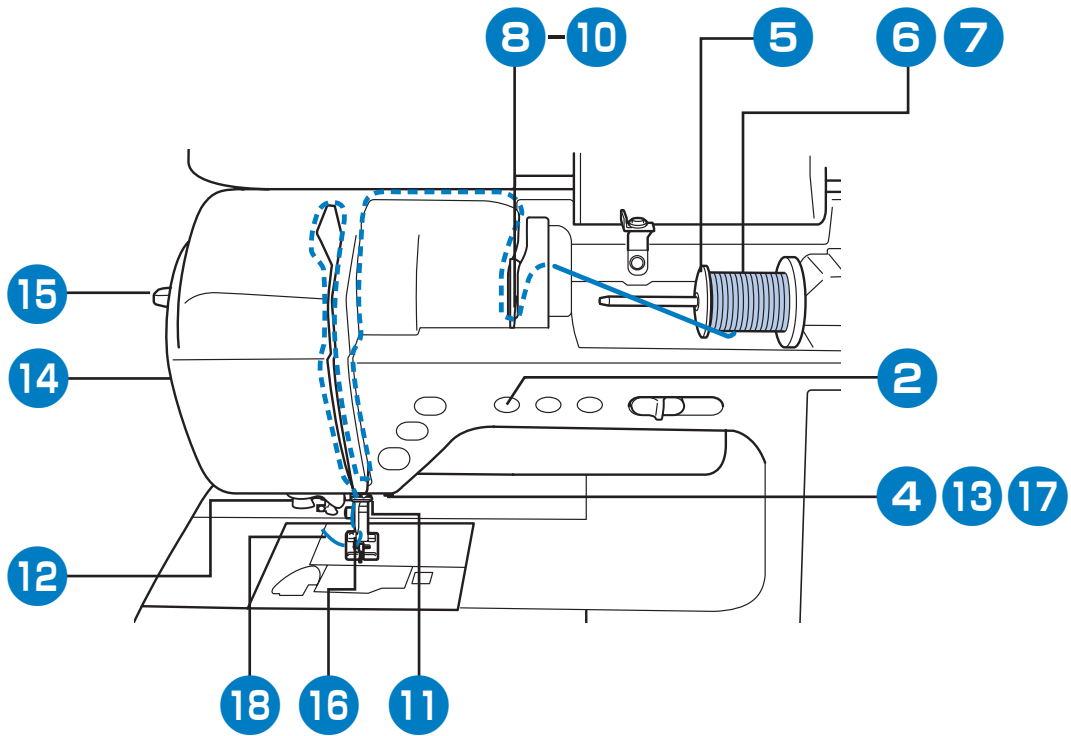
Üst İpliğin Takılması

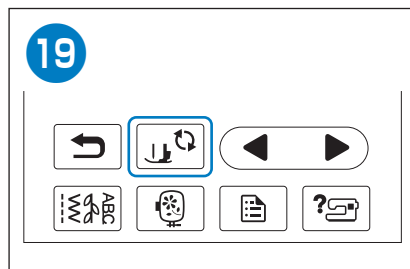
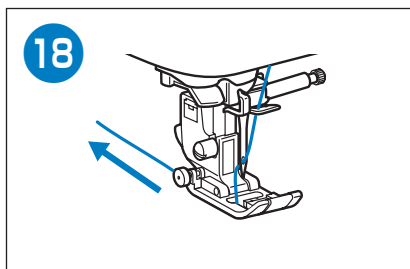
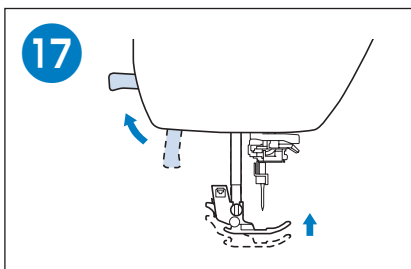
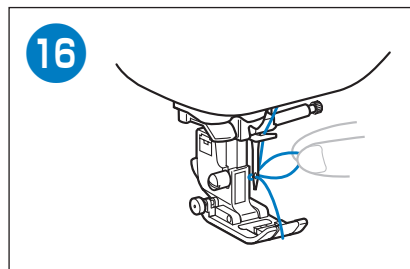
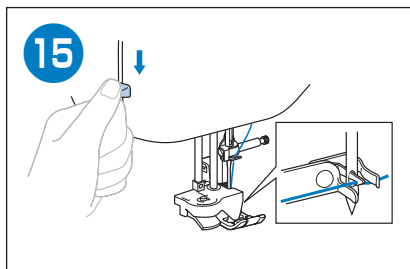
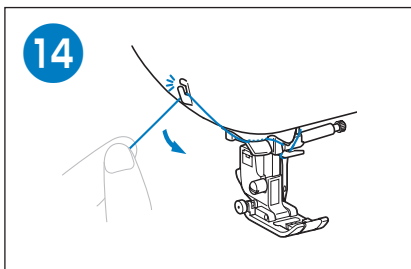
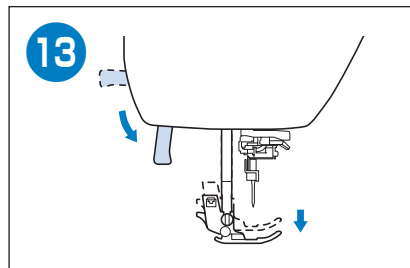
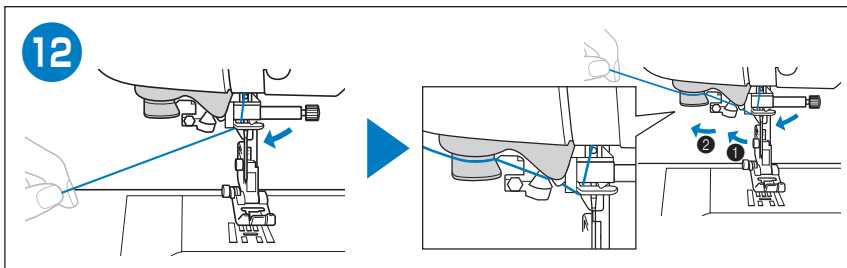
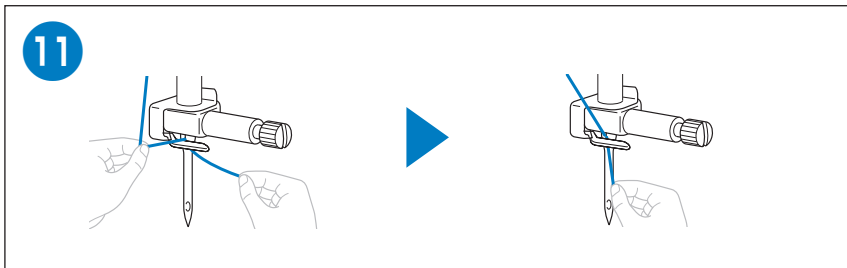
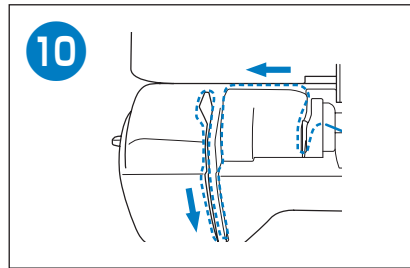
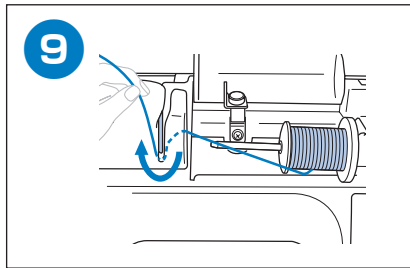
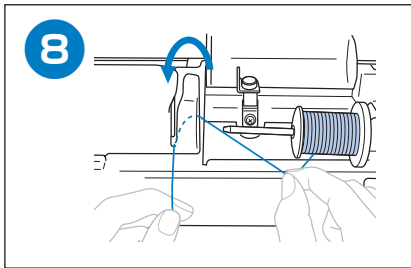
การร้อยด้ายบน

面线穿线

穿上線

윗실 끼우기





Selecting and Sewing Stitch Patterns

Desenlerin Seçimi ve Dikimi

การเลือกและแพทเทิร์นการเย็บ

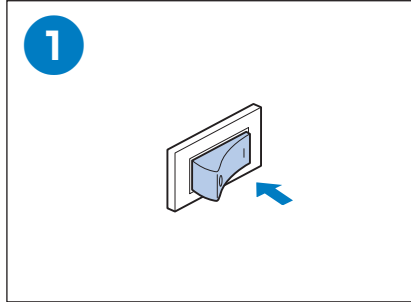
选择并缝制花样

選擇並縫紉花樣

패턴 선택 및 재봉

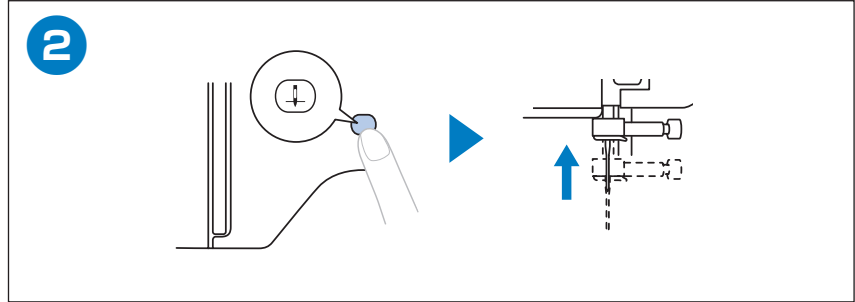
◆ Utility Stitches

◆ 实用针迹



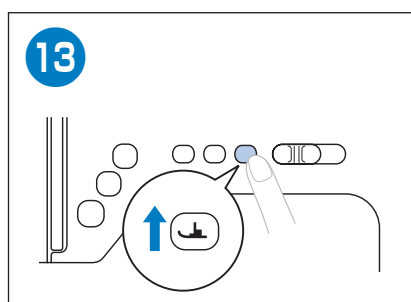
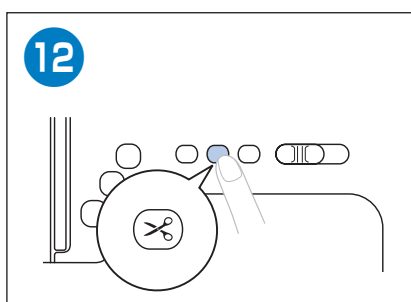
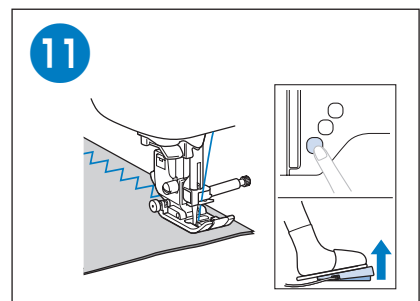
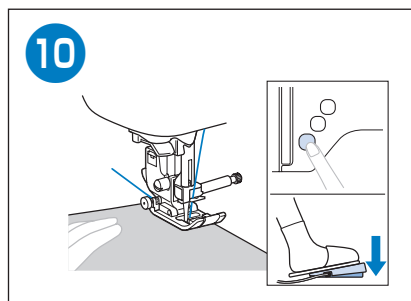
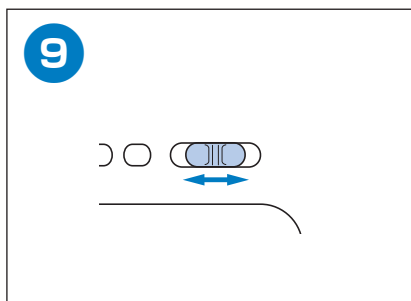
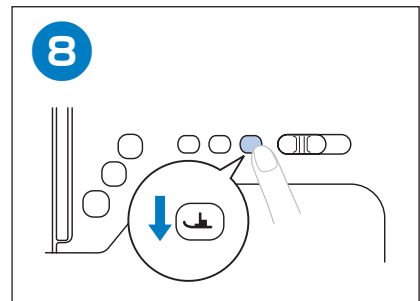
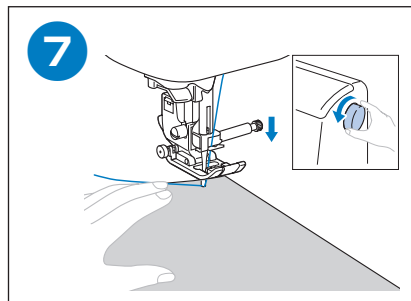
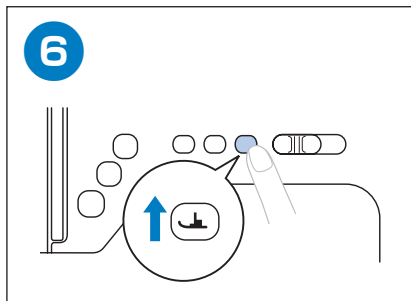
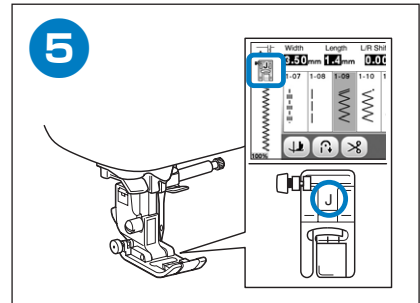
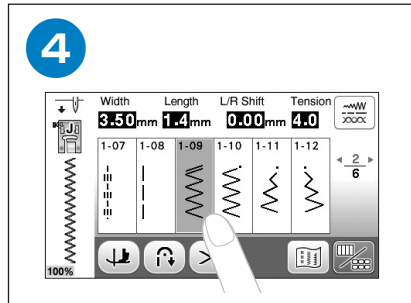
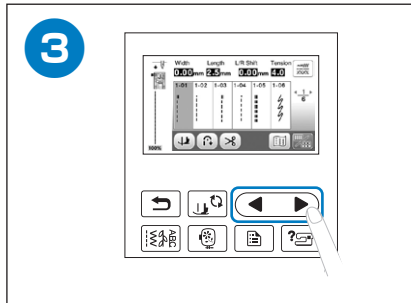
◆ Yararlı Dikişler

◆ 實用針趾



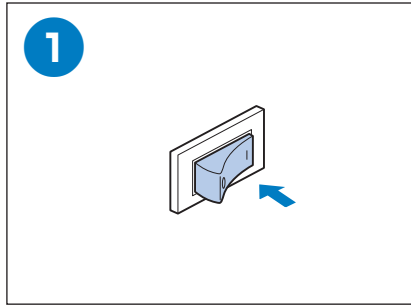
◆ ตะเข็บใช้งาน

◆ 실용 재봉



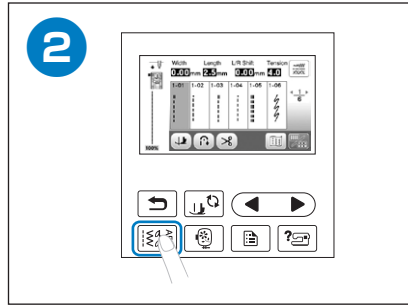
◆ Decorative Stitches

◆ 装饰针迹



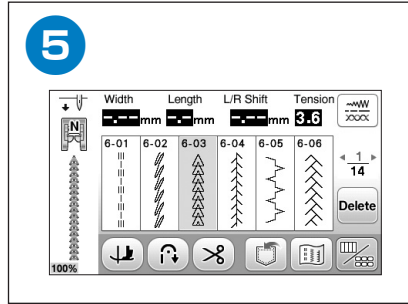
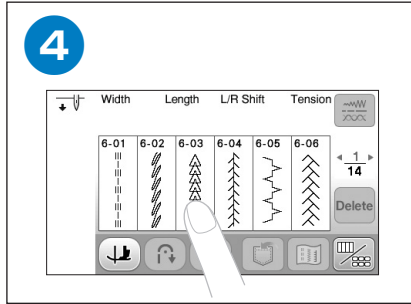
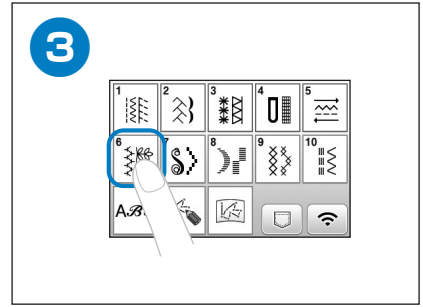
◆ Dekoratif Dikişler

◆ 装饰性针迹



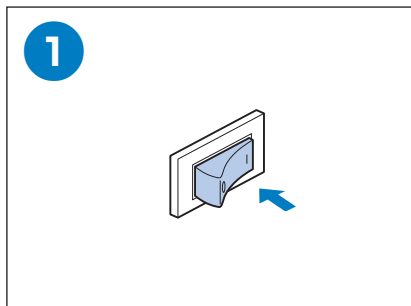
◆ ตะเข็บตกแต่ง

◆ 장식 재봉



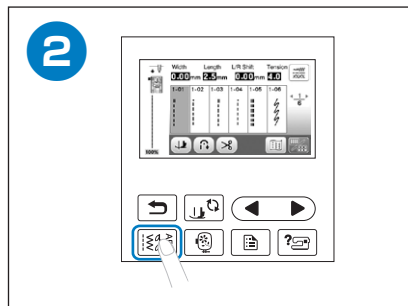
◆ Character Stitches

◆ 文字针迹



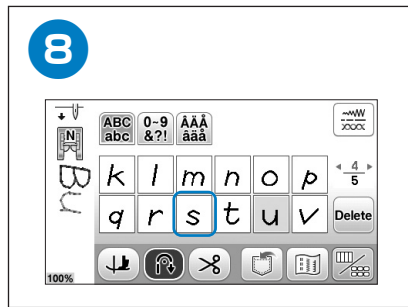
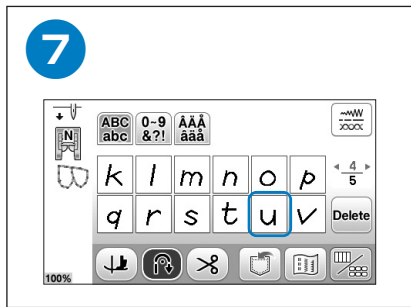
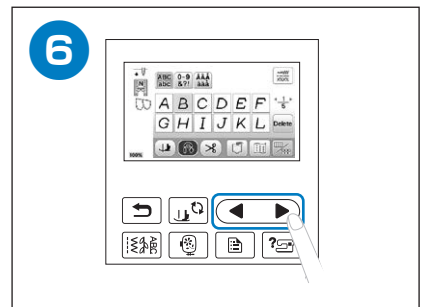
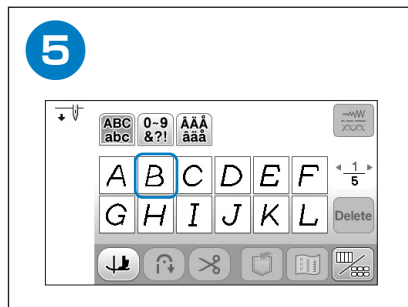
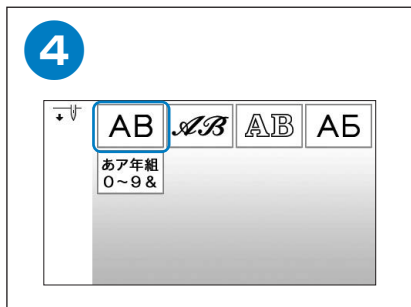
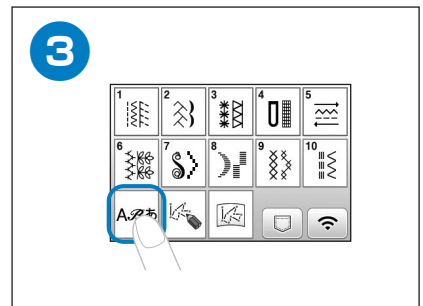
◆ Karakter dikişleri

◆ 文字针迹



◆ ตะเข็บตัวอักษร

◆ 문자 재봉





Summary of Stitch Patterns

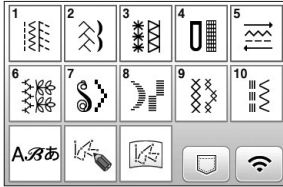
Dikiş Desenlerinin Özeti

สรุปแพทเทิร์นตะเข็บ

针迹花样概述

針跡花樣概要

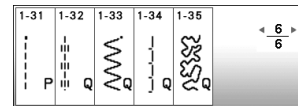
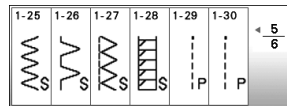
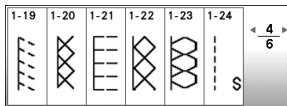
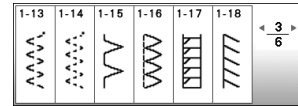
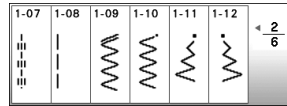
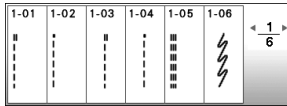
재봉 패턴 요약



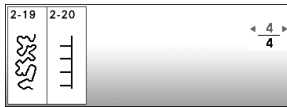
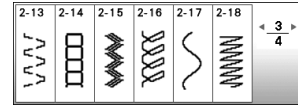
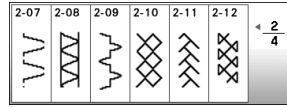
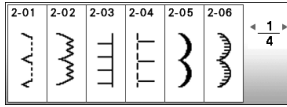
◆ Utility Stitches

◆ 实用针迹

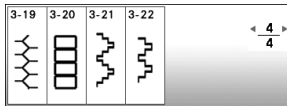
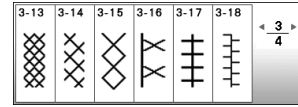
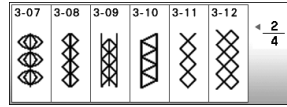
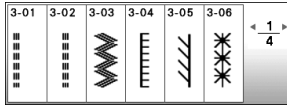
• 1-01~1-35



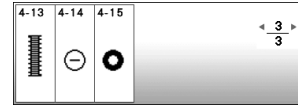
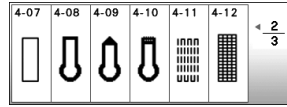
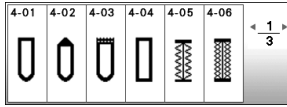
• 2-01~2-20



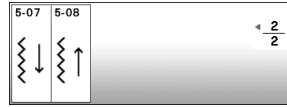
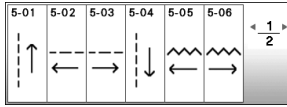
• 3-01~3-22



• 4-01~4-15



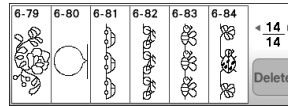
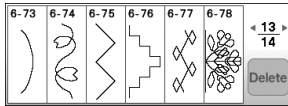
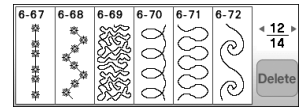
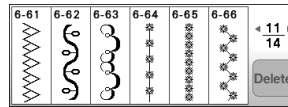
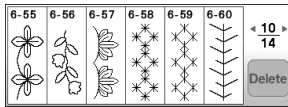
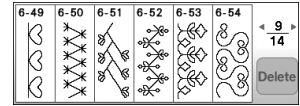
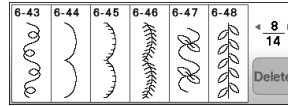
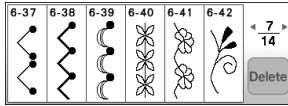
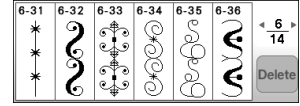
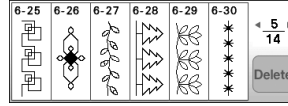
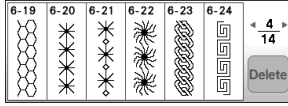
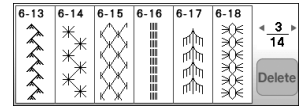
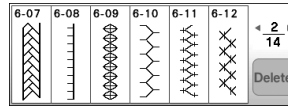
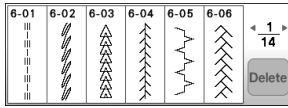
• 5-01~5-08



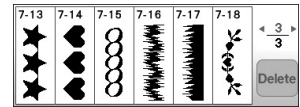
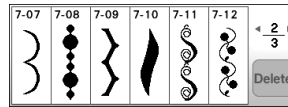
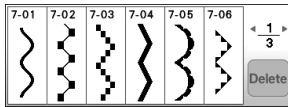
◆ Decorative Stitches

◆ 装饰针迹

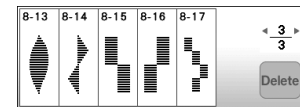
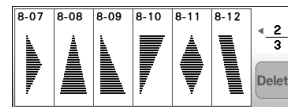
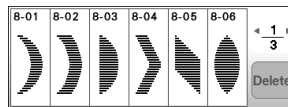
• 6-01~6-84



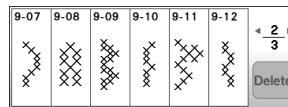
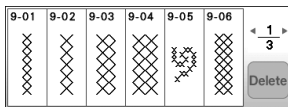
• 7-01~7-18



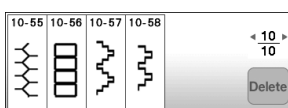
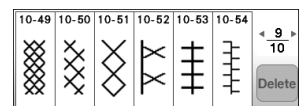
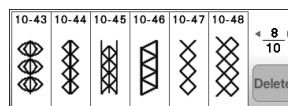
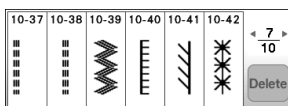
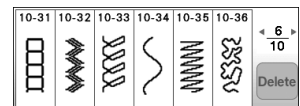
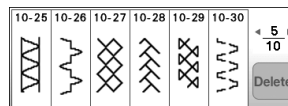
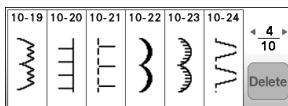
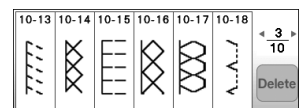
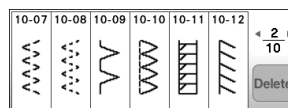
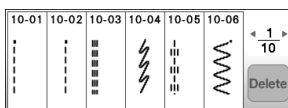
• 8-01~8-17



• 9-01~9-14



• 10-01~10-58



◆ Dekoratif Dikişler

◆ 装饰性针迹

◆ ตะเข็บตกแต่ง

◆ 장식 재봉

◆ Character Stitches

◆ 文字針迹

A.3あ ▶ AB

ABC abc	0-9 &?! aaa	AAA aaa	~W ~W			
A	B	C	D	E	F	← 1/5
G	H	I	J	K	L	Delete

ABC abc	0-9 &?! aaa	AAA aaa	~W ~W			
k	l	m	n	o	p	← 4/5
q	r	s	t	u	v	Delete

ABC abc	0-9 &?! aaa	AAA aaa	~W ~W			
\$	£	€	¥	-	+	← 2/5
X	÷	=	*	.	,	Delete

ABC abc	0-9 &?! aaa	AAA aaa	~W ~W			
_						← 5/5
Delete						

ABC abc	0-9 &?! aaa	AAA aaa	~W ~W			
İ	ı	ı	ı	ı	Ñ	← 3/5
Ñ	ñ	Ô	Ö	Ø	Õ	Delete

◆ Karakter dikişleri

◆ 文字針迹

ABC abc	0-9 &?! aaa	AAA aaa	~W ~W			
M	N	O	P	Q	R	← 2/5
S	T	U	V	W	X	Delete

ABC abc	0-9 &?! aaa	AAA aaa	~W ~W		
w	x	y	z	_	← 5/5
Delete					

ABC abc	0-9 &?! aaa	AAA aaa	~W ~W			
&	?	!	@	<	>	← 3/5
()	[]	/	\	Delete

ABC abc	0-9 &?! aaa	AAA aaa	~W ~W			
Â	Ä	Å	Æ	à	á	← 1/5
â	ã	ä	å	æ	ç	Delete

ABC abc	0-9 &?! aaa	AAA aaa	~W ~W			
Œ	ø	ó	ô	ö	ø	← 4/5
õ	œ	ŗ	ţ	Û	Ü	Delete

◆ ตะเข็บตัวอักษร

◆ 문자 재봉

ABC abc	0-9 &?! aaa	AAA aaa	~W ~W			
Y	Z	α	b	c	d	← 3/5
e	f	g	h	i	j	Delete

ABC abc	0-9 &?! aaa	AAA aaa	~W ~W			
0	1	2	3	4	5	← 1/5
6	7	8	9	#	%	Delete

ABC abc	0-9 &?! aaa	AAA aaa	~W ~W			
~	:	:	©	®	™	← 4/5
“	”	”	'	'	'	Delete

ABC abc	0-9 &?! aaa	AAA aaa	~W ~W			
ç	Đ	È	É	Ê	Ë	← 2/5
è	é	ê	ë	Í	Ï	Delete

ABC abc	0-9 &?! aaa	AAA aaa	~W ~W			
ù	ú	û	ü	z	ƒ	← 5/5
ƒ	B	_	Delete			

A.3あ ▶ AB

ABC abc	0-9 &?! aaa	AAA aaa	~W ~W			
A	B	C	D	E	F	← 1/5
G	H	I	J	K	L	Delete

ABC abc	0-9 &?! aaa	AAA aaa	~W ~W			
k	l	m	n	o	p	← 4/5
q	r	s	t	u	v	Delete

ABC abc	0-9 &?! aaa	AAA aaa	~W ~W			
\$	£	€	¥	-	+	← 2/5
X	÷	=	*	.	,	Delete

ABC abc	0-9 &?! aaa	AAA aaa	~W ~W			
_						← 5/5
Delete						

ABC abc	0-9 &?! aaa	AAA aaa	~W ~W			
İ	ı	ı	ı	ı	Ñ	← 3/5
Ñ	ñ	Ô	Ö	Ø	Õ	Delete

ABC abc	0-9 &?! aaa	AAA aaa	~W ~W			
M	N	O	P	Q	R	← 2/5
S	T	U	V	W	X	Delete

ABC abc	0-9 &?! aaa	AAA aaa	~W ~W		
w	x	y	z	_	← 5/5
Delete					

ABC abc	0-9 &?! aaa	AAA aaa	~W ~W			
&	?	!	@	<	>	← 3/5
()	[]	/	\	Delete

ABC abc	0-9 &?! aaa	AAA aaa	~W ~W			
Â	Ä	Å	Æ	à	á	← 1/5
â	ã	ä	å	æ	ç	Delete

ABC abc	0-9 &?! aaa	AAA aaa	~W ~W			
Œ	ø	ó	ô	ö	ø	← 4/5
õ	œ	ŗ	ţ	Û	Ü	Delete

ABC abc	0-9 &?! aaa	AAA aaa	~W ~W			
Y	Z	α	b	c	d	← 3/5
e	f	g	h	i	j	Delete

ABC abc	0-9 &?! aaa	AAA aaa	~W ~W			
0	1	2	3	4	5	← 1/5
6	7	8	9	#	%	Delete

ABC abc	0-9 &?! aaa	AAA aaa	~W ~W			
~	:	:	©	®	™	← 4/5
“	”	”	'	'	'	Delete

ABC abc	0-9 &?! aaa	AAA aaa	~W ~W			
ç	Đ	È	É	Ê	Ë	← 2/5
è	é	ê	ë	Í	Ï	Delete

ABC abc	0-9 &?! aaa	AAA aaa	~W ~W			
ù	ú	û	ü	z	ƒ	← 5/5
ƒ	B	_	Delete			

A.3.3 AB

ABC abc	0-9 &?! AAA aaa	~WV ~WV				
A	B	C	D	E	F	< 1/5 >
G	H	I	J	K	L	Delete

ABC abc	0-9 &?! AAA aaa	~WV ~WV				
M	N	O	P	Q	R	< 2/5 >
S	T	U	V	W	X	Delete

ABC abc	0-9 &?! AAA aaa	~WV ~WV				
Y	Z	a	b	c	d	< 3/5 >
e	f	g	h	i	j	Delete

ABC abc	0-9 &?! AAA aaa	~WV ~WV				
k	l	m	n	o	p	< 4/5 >
q	r	s	t	u	v	Delete

ABC abc	0-9 &?! AAA aaa	~WV ~WV			
w	x	y	z	_	< 5/5 >
Delete					

ABC abc	0-9 &?! AAA aaa	~WV ~WV				
0	1	2	3	4	5	< 1/5 >
6	7	8	9	#	%	Delete

ABC abc	0-9 &?! AAA aaa	~WV ~WV				
§	€	©	¥	□	+	< 2/5 >
×	÷	≡	✳	°	ρ	Delete

ABC abc	0-9 &?! AAA aaa	~WV ~WV				
&	?	!	⊙	<	>	< 3/5 >
()	[]	/	\	Delete

ABC abc	0-9 &?! AAA aaa	~WV ~WV				
~	°	°	⊙	⊙	™	< 4/5 >
σ	ρ	°	°	σ	ρ	Delete

ABC abc	0-9 &?! AAA aaa	~WV ~WV				
_						< 5/5 >
Delete						

ABC abc	0-9 &?! AAA aaa	~WV ~WV				
À	Ä	Å	Æ	à	ä	< 1/5 >
â	ã	ä	á	æ	Ç	Delete

ABC abc	0-9 &?! AAA aaa	~WV ~WV				
Ç	Ð	È	É	Ê	Ë	< 2/5 >
è	é	ê	ë	í	ï	Delete

ABC abc	0-9 &?! AAA aaa	~WV ~WV				
İ	ı	ı	ı	ı	Ń	< 3/5 >
Ń	ñ	Ō	ō	Ø	Ó	Delete

ABC abc	0-9 &?! AAA aaa	~WV ~WV				
œ	ò	ó	ô	ö	ø	< 4/5 >
ó	œ	ř	ť	Ů	ů	Delete

ABC abc	0-9 &?! AAA aaa	~WV ~WV				
ù	ú	û	ü	z	Ɔ	< 5/5 >
Ɔ	Ɔ	_	Delete			

A.3.3 AB

АБВ абв	0-9 &?! AAA aaa	~WV ~WV				
А	Б	В	Г	Д	Е	< 1/4 >
Ё	Ж	З	И	Й	К	Delete

АБВ абв	0-9 &?! AAA aaa	~WV ~WV				
Л	М	Н	О	П	Р	< 2/4 >
С	Т	У	Ф	Х	Ц	Delete

АБВ абв	0-9 &?! AAA aaa	~WV ~WV				
Ч	Ш	Щ	Ъ	Ы	Ь	< 3/4 >
Э	Ю	Я	Г	Е	І	Delete

АБВ абв	0-9 &?! AAA aaa	~WV ~WV				
İ	ÿ	ħ	ĥ	Ј	Љ	< 4/4 >
Њ	Ц	Ѓ	Ѕ	Ќ	_	Delete

АБВ абв	0-9 &?! AAA aaa	~WV ~WV				
а	б	в	г	д	е	< 1/4 >
ё	ж	з	и	й	к	Delete

АБВ абв	0-9 &?! AAA aaa	~WV ~WV				
Л	М	Н	О	П	Р	< 2/4 >
С	Т	У	Ф	Х	Ц	Delete

АБВ абв	0-9 &?! AAA aaa	~WV ~WV				
ч	ш	щ	ъ	ы	ь	< 3/4 >
э	ю	я	г	е	і	Delete

АБВ абв	0-9 &?! AAA aaa	~WV ~WV				
ı	ÿ	ħ	ĥ	Ј	Љ	< 4/4 >
Њ	Ц	Ѓ	Ѕ	Ќ	_	Delete

АБВ абв	0-9 &?! AAA aaa	~WV ~WV				
0	1	2	3	4	5	< 1/2 >
6	7	8	9	-	.	Delete

АБВ абв	0-9 &?! AAA aaa	~WV ~WV				
,	&	?	!	()	< 2/2 >
/	'	_	Delete			

Katakana characters: One of the Japanese character sets.

Katakana karakterleri: Japonca karakter setlerinden biri.

ตัวอักษรคาตากานะ: หนึ่งในชุดตัวอักษร

ภาษาญี่ปุ่น

片假名字符：日文字符集之一。

片假名字符：一種日文字符集。

가타카나 문자: 일본어 문자 세트 중 하나입니다.

Arabic numerals, Japanese Kanji numerals

Arapça rakamlar, Japonca Kanji rakamları

เลขอารบิก เลขคันจิของญี่ปุ่น

阿拉伯数字·日文汉字数字

阿拉伯數字、日文漢字數字

아라비아 숫자, 일본어 한자 숫자

Kanji characters: Often used in daily life / symbols.

Kanji karakterleri: Günlük hayatta sıklıkla kullanılır / semboller.

ตัวอักษรคันจิ: มักใช้ในชีวิตประจำวัน/สัญลักษณ์

日文汉字字符：通常用于日常生活/符号。

日語漢字：常用於日常生活/符號。

한자 문자: 일상 생활/기호에 종종 사용됩니다.

Hiragana characters: One of the Japanese character sets.

Hiragana karakterleri: Japonca karakter setlerinden biri.

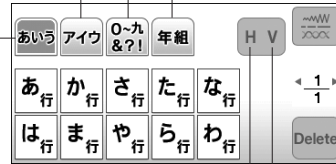
ตัวอักษรฮิรางานะ: หนึ่งในชุดตัวอักษร

ภาษาญี่ปุ่น

平假名字符：日文字符集之一。

平假名字符：一種日文字符集。

히라가나 문자: 일본어 문자 세트 중 하나입니다.

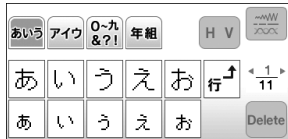


Horizontal
Yatay
แนวราบ
水平
水平
가로

Vertical
Dikey
แนวตั้ง
垂直
垂直
세로



あ行



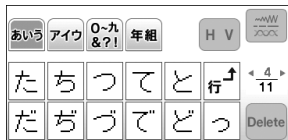
か行



さ行



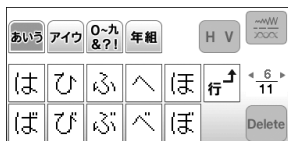
た行



な行



は行



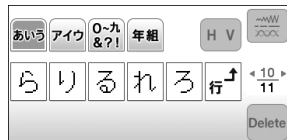
ま行



や行



ら行



わ行



あいう アイウ 0-9 & ? ! 年組 H V

ア	カ	サ	タ	ナ	→ 1
ハ	マ	ヤ	ラ	ワ	Delete

あいう アイウ 0-9 & ? ! 年組 H V

ア	イ	ウ	エ	オ	行 ↑ 11
ア	イ	ウ	エ	オ	ヴ Delete

ア行

あ	い	う	え	お	行 ↑ 11
ア	イ	ウ	エ	オ	ヴ Delete

カ行

カ	キ	ク	ケ	コ	行 ↑ 11
ガ	ギ	グ	ゲ	ゴ	Delete

サ行

サ	シ	ス	セ	ソ	行 ↑ 11
ザ	ジ	ズ	ゼ	ゾ	Delete

タ行

タ	チ	ツ	テ	ト	行 ↑ 11
ダ	ヂ	ヅ	デ	ド	ッ Delete

ナ行

ナ	ニ	ヌ	ネ	ノ	行 ↑ 11
Delete					

ハ行

ハ	ヒ	フ	ヘ	ホ	行 ↑ 11
バ	ビ	ブ	ベ	ボ	Delete

パ	ピ	プ	ペ	ポ	行 ↑ 11
Delete					

マ行

マ	ミ	ム	メ	モ	行 ↑ 11
Delete					

ヤ行

ヤ	ユ	ヨ	行 ↑ 11
ヤ	ユ	ヨ	Delete

ラ行

ラ	リ	ル	レ	ロ	行 ↑ 11
Delete					

ワ行

ワ	ヲ	ン	ン	行 ↑ 11
Delete				

0	1	2	3	4	5	→ 1
6	7	8	9	0	—	Delete

二	三	四	五	六	七	→ 2
八	九	十	&	?	!	Delete

()	-	_	→ 3
Delete				

生	年	月	日	才	保	→ 1
育	幼	稚	園	小	中	Delete

学	校	組	部	火	水	→ 2
木	金	土	_	Delete		

- Example of Kanji characters in daily life
- Günlük hayattaki Kanji karakterlerine örnekler
- ตัวอย่างตัวอักษรคันจิในชีวิตประจำวัน
- 日常生活日文汉字字符示例
- 日常生活中的日語漢字範例
- 일상 생활에 사용되는 한자 문자 예

一 二 三 四 五 六 七 八 九 十

1, 2, 3, 4, 5, 6, 7, 8, 9, 10

生 年 月 日

Date of birth

出生日期

Doğum tarihi

出生日期

วันเดือนปีเกิด

생년월일

一 才

1 year old

1岁

1 yaşında

1 歲

1 ขวบ

1살

保 育 園

Nursery school

幼儿园

Kreş

幼兒園

เนิร์สเซอรี

유아원

幼 稚 園

Kindergarten

学前班

Anaokulu

幼稚園

โรงเรียนอนุบาล

유치원

小 学 校

Elementary school

小学

İlkokul

小學

โรงเรียนประถมศึกษา

초등학교

中 学 校

Junior high school

初中

Ortaokul

中學

โรงเรียนมัธยมศึกษาตอนต้น

중고등학교

組

Group/Class

组/班

Grup/Sınıf

組別/班級

กลุ่ม/ชั้น

그룹/조

部

Club/Division

会所/部门

Kulüp/Şube

社團/部門

คลับ/แผนก

클럽/부



Moon/Monday
月亮/周一

Ay/Pazartesi
月/星期一

ดวงจันทร์/วันจันทร์
월/월요일



Fire/Tuesday
火/周二

Ateş/Salı
火/星期二

ไฟ/วันอังคาร
화/화요일



Water/Wednesday
水/周三

Su/Çarşamba
水/星期三

น้ำ/วันพุธ
수/수요일



Tree/Thursday
木/周四

Ağaç/Perşembe
木/星期四

ต้นไม้/วันพฤหัสบดี
목/목요일



Gold/Friday
金/周五

Altın/Cuma
金/星期五

ทอง/วันศุกร์
금/금요일



Soil/Saturday
土/周六

Toprak/Cumartesi
土/星期六

ดิน/วันเสาร์
토/토요일



Sun/Sunday
太阳/周日

Güneş/Pazar
日/星期日

ดวงอาทิตย์/วันอาทิตย์
일/일요일



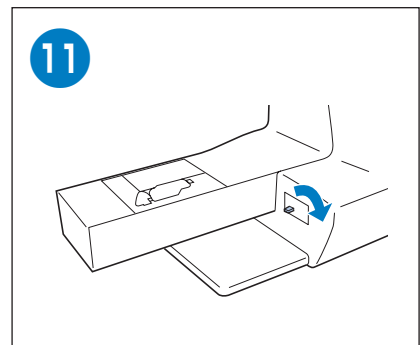
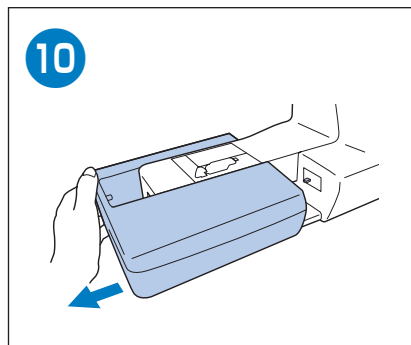
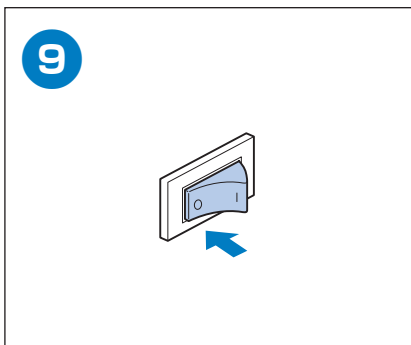
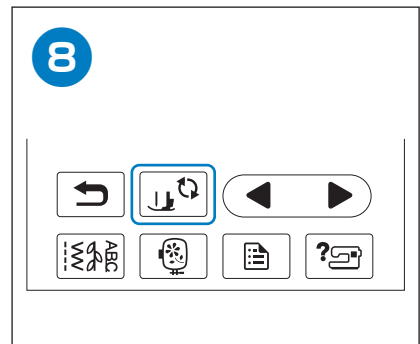
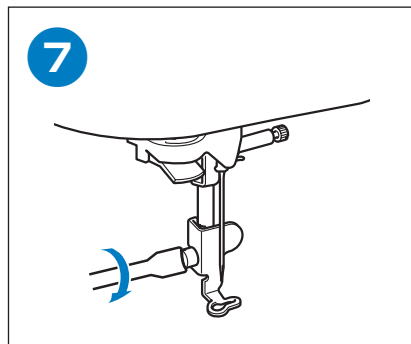
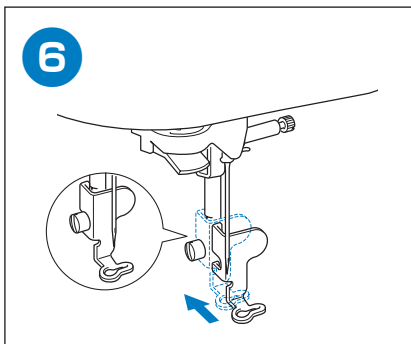
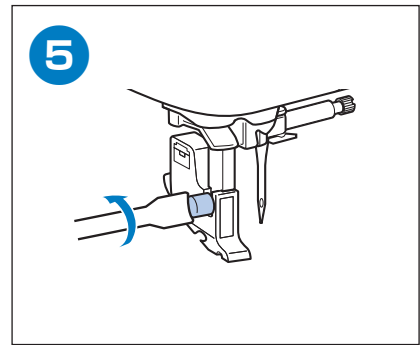
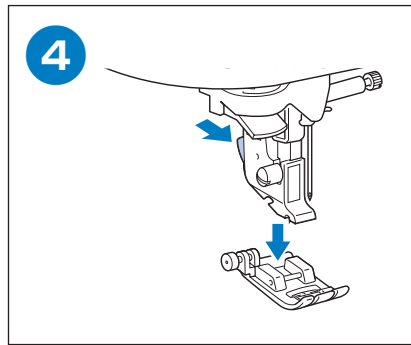
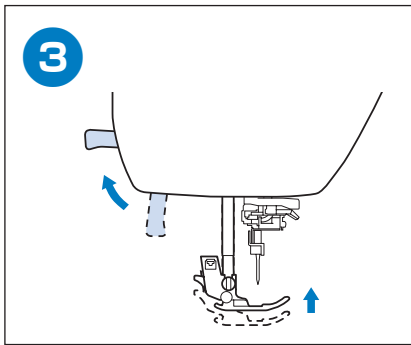
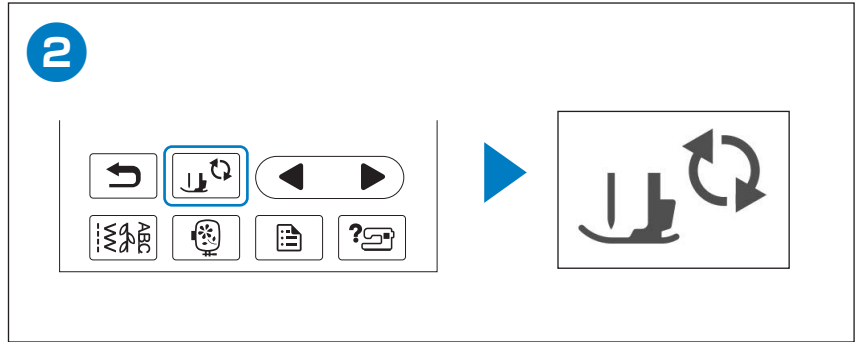
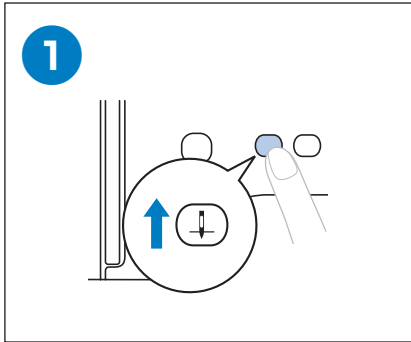
January 1st (Monday)
1月1日 (周一)

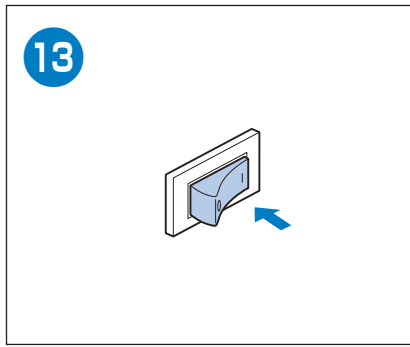
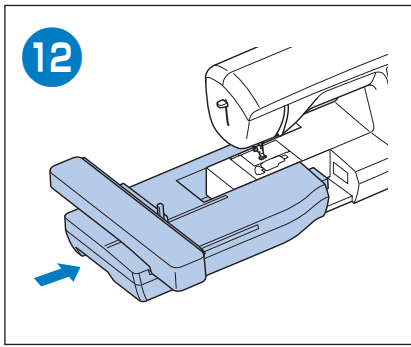
1 Ocak (Pazartesi)
1月1日 (星期一)

วันที่ 1 มกราคม (วันจันทร์)
1월 1일(월요일)



Preparing to Embroider
Nakış İşlemeye Hazırlanmak
การเตรียมสำหรับการปัก
准备绣花
準備刺繡
자수 준비



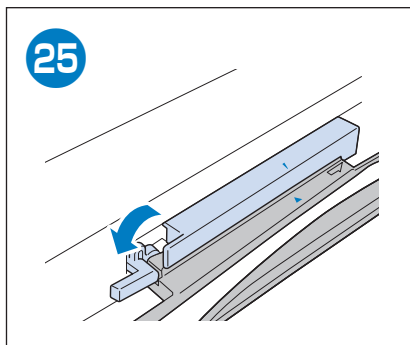
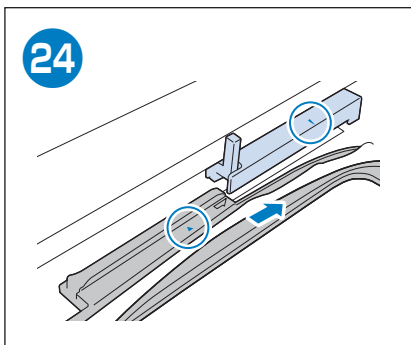
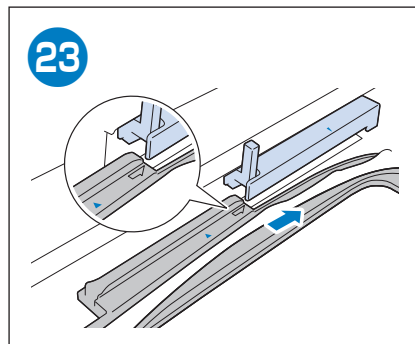
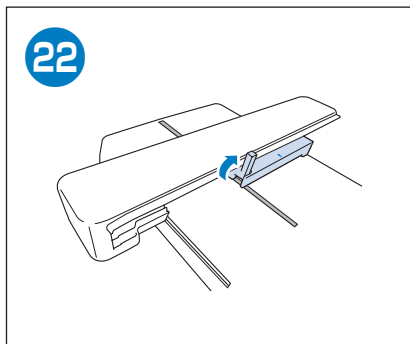
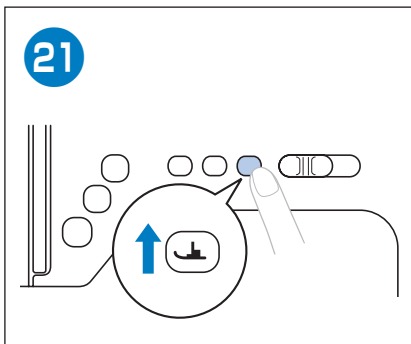
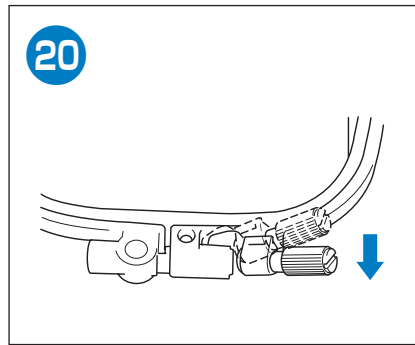
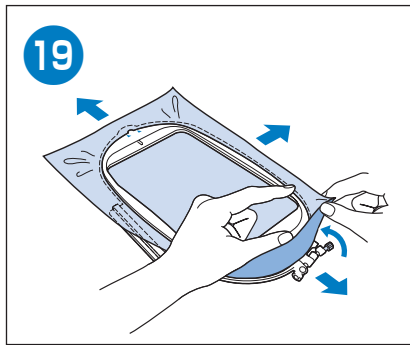
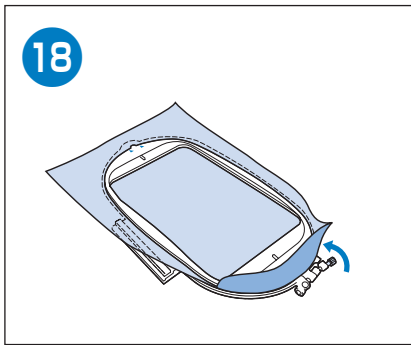
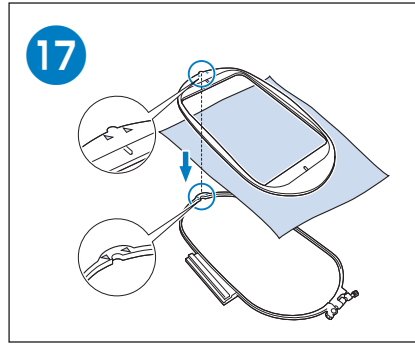
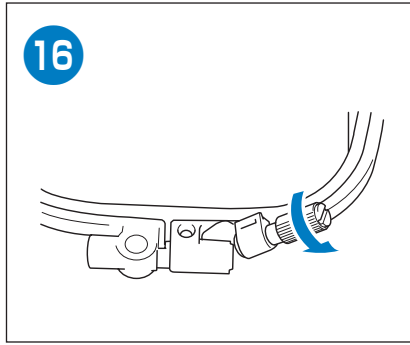
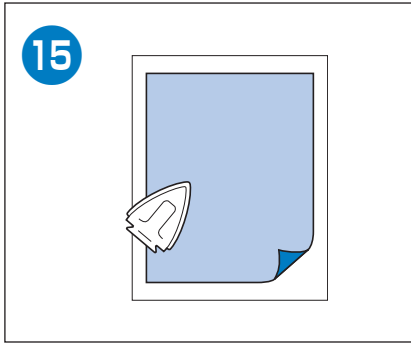


14

!

The carriage of the embroidery unit will move. Keep your hands etc. away from the carriage.

OK





Selecting Embroidery Patterns

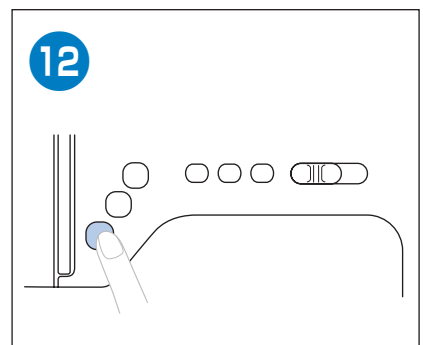
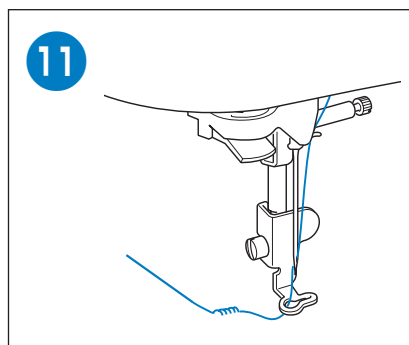
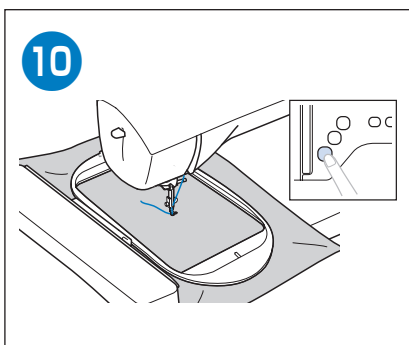
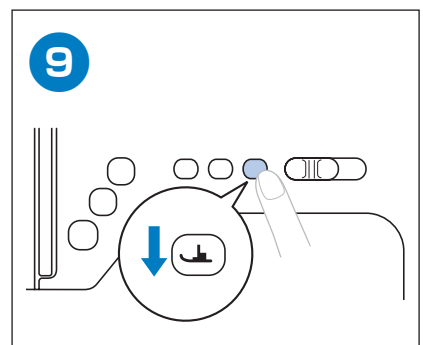
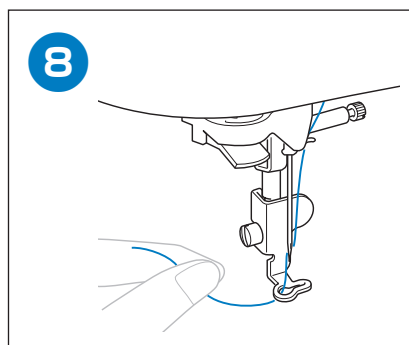
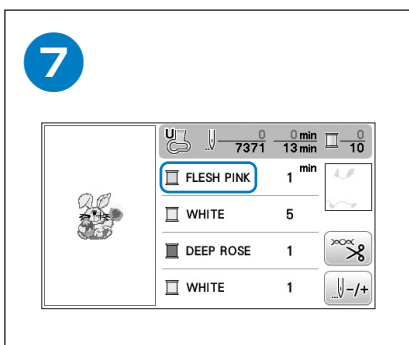
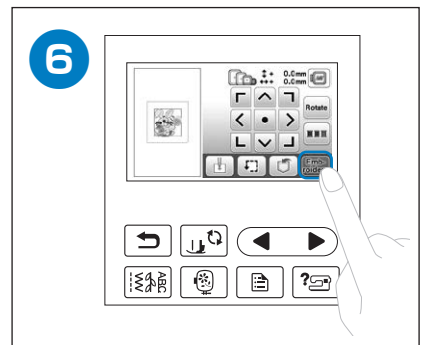
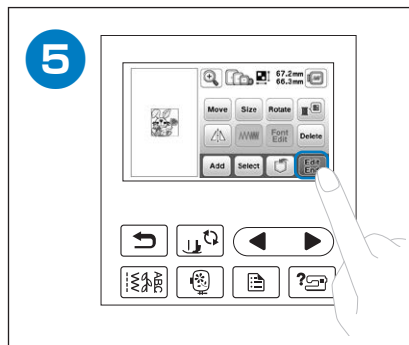
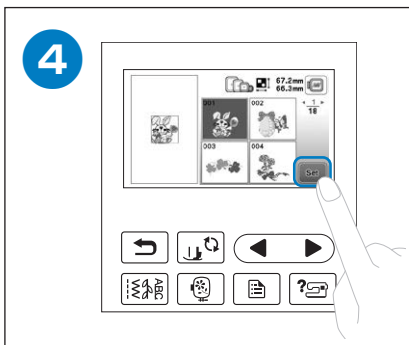
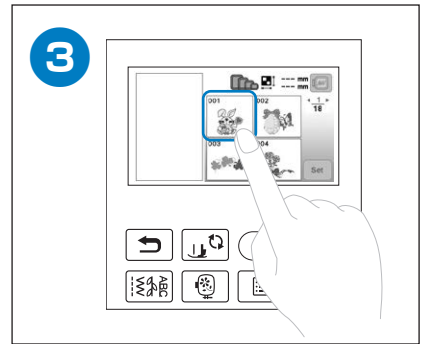
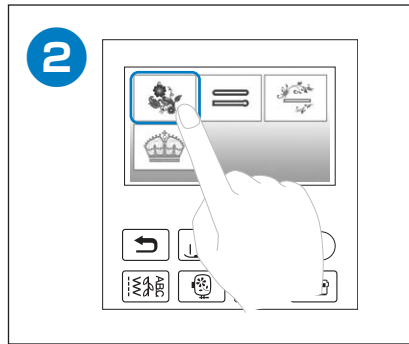
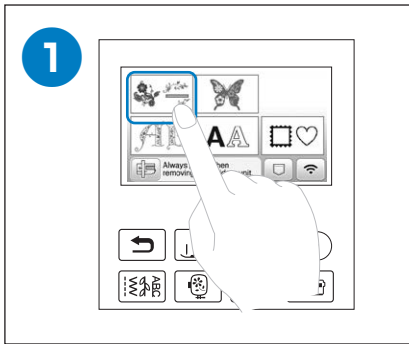
Nakış Desenlerinin Seçimi

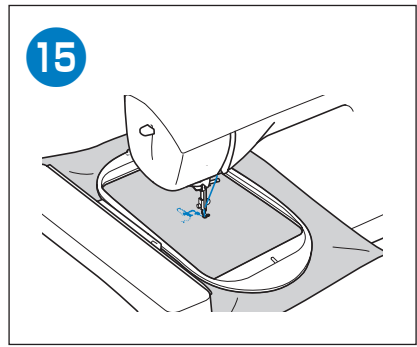
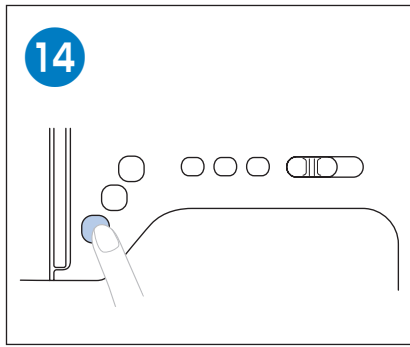
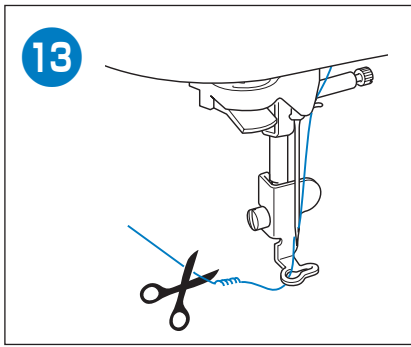
การเลือกแพทเทิร์นลายปัก

选择绣花花样

選擇刺繡花樣

자수 패턴 선택







English
Turkish
Thai
Chinese-simp
Chinese-trad
Korean
888-G30/G32/G34



D02672-001