

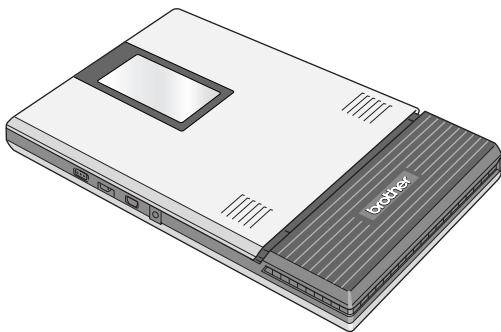
**brother**<sup>®</sup>  
At your side.

Software Guide

# **MPRINT**

## **MW-260**

### **Mobile Printer**



- Before using this printer, be sure to read this User's Guide.
- We suggest that you keep this manual in a handy place for future reference.

- Microsoft<sup>®</sup>, Windows<sup>®</sup>, Windows Mobile<sup>™</sup> and Windows Vista<sup>™</sup> are registered trademarks of Microsoft Corporation in the United States and other countries.
- The formal name for Pocket PC 2003 is Windows Mobile<sup>™</sup> 2003 Software for PocketPC.
- The Bluetooth<sup>®</sup> word mark and logos are owned by the Bluetooth<sup>®</sup> SIG, Inc. and any use of such marks by Brother Industries, Ltd. under license.
- Portion of graphics filter software are based in part on the work of Group 42, Inc.
- Portion of graphics filter software are based in part on the work of the Independent JPEG group.
- VS-FlexGrid Pro Copyright(C) 1999 VideoSoft Corporation.
- All other software and product names mentioned are trademarks or registered trademarks of their respective companies.

# Contents

<b>1 Operating Environment .....</b>	<b>2</b>
<b>2 Communication using Bluetooth technology .....</b>	<b>4</b>
<b>3 Printing Data from a Computer Running Windows .....</b>	<b>6</b>
Installing the software .....	6
Printing .....	14
Starting up P-touch Editor .....	15
Using P-touch Editor 4.2 .....	16
P-touch Editor 4.2 window structure and section functions .....	17
Database window .....	19
Printing from other applications .....	20
Uninstalling the software .....	21
<b>4 Printing Data From a Pocket PC .....</b>	<b>22</b>
Installing the software .....	23
Printing .....	26
Printing procedures .....	27
Uninstalling the software .....	42
<b>5 Changing Printer Settings .....</b>	<b>43</b>
Changing the settings .....	43

# 1 Operating Environment

This mobile printer can print data from a computer running Windows<sup>®</sup>, a Pocket PC (PDA running Pocket PC) or Windows Mobile<sup>™</sup>.

## Computer running Windows<sup>®</sup>

In order to use this printer, make sure that your system configuration meets the following requirements.

### ■ PC operating environment

Processor	Pentium 266 MHz or higher recommended
Operating system	Microsoft <sup>®</sup> Windows <sup>®</sup> 2000 Professional Windows <sup>®</sup> XP/Windows Vista <sup>™</sup>
Interface	Compliant with USB Ver.2.0(Full speed) Compliant with Bluetooth ver.1.1 serial port profile supports as standard <sup>*1</sup>
Available Memory	64 MB or more recommended
Hard disk free space	Minimum 70 MB

- A processor and memory greater than that recommended for each operating system is required.



**\*1** For information on computers running Windows<sup>®</sup> and Bluetooth adapters whose operation have already been verified, check our Web site at <http://www.brother.com>.

To print data from a computer running Windows<sup>®</sup> → Refer to page 6.

## Pocket PC (PDA running Pocket PC)

In order to use this printer, make sure that your Pocket PC meets the following requirements.

### ■ Pocket PC operating environment

Processor	ARM
Operating system	Microsoft® Pocket PC 2003 Microsoft® Pocket PC 2003 SE Microsoft® Windows Mobile® 5.0
Interface	Compliant with USB Ver.2.0(Full speed) Compliant with Bluetooth ver.1.1 serial port profile supports as standard*1 Compliant with IrDA ver.1.3

- When installing the software, a computer running Windows® that can connect to the Pocket PC will be needed.



**\*1** For information on Pocket PCs whose operation has already been verified, check our Web site at <http://www.brother.com>.

To print data from a Pocket PC → Refer to page 22.

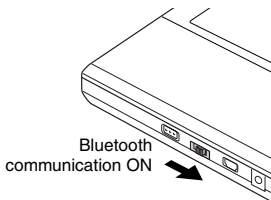
## 2 Communication using Bluetooth technology

In order for this printer to communicate using Bluetooth technology with the computer running Windows® or the Pocket PC, various Bluetooth settings must be specified.

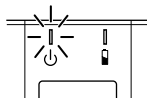


- The following instructions show you the basic procedures for make a Bluetooth communication. For details, refer to the instruction manual for your Bluetooth device.

### 1 Set the interface switch to “Bluetooth”.



→ The status indicator light will be blue.



### 2 Run the Bluetooth connection software on the computer running Windows® or PDA.

### 3 Use the Bluetooth connection software to search for Bluetooth devices.

→ “MW-260xxxx” is detected. “xxxx” is a last 4 digit of its serial number.

#### **4** Select this printer from the list of devices.

- The screen to enter the “PIN code” (or “Pass key”) appears only the first time that the computer running Windows® or PDA is connected to the printer.



- Depending on the Bluetooth device, you may be requested to enter the PIN code with subsequent connections.

#### **5** Enter the “PIN code” (or “Pass key” at the time of shipment, the PIN code is set to the last four digits of the serial number of the printer) and click/tap the Enter button.

- “Connected device Yes” appears on the Device information screen.

#### **6** Use the Bluetooth connection software to select the serial port as the method for connecting to this printer.



- Note the COM port number when it appears (The COM port number may be required when printing depending on the type of the computer or the pocket PC).

# 3 Printing Data from a Computer Running Windows


In order to use this printer to print data from a computer running Windows®, the software must be installed on the computer.

## Installing the software



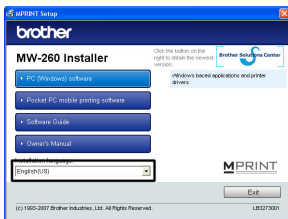
- Do not connect this printer to the computer until you are instructed to do so.

### 1 Insert the enclosed CD-ROM into the CD-ROM drive of the computer running Windows®.

- The installer automatically starts up and the Brother Select Language dialog box appears.
- If the installer does not automatically start up, double-click “My Computer”, and then choose the “CD drive”  and double-click the “setup.exe” file.

### 2 Select the language.

- The language is changed.

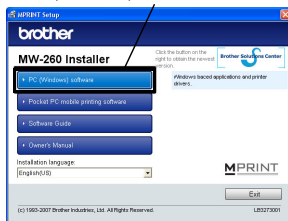




## 3 Click the top button (PC(Windows) software).

→ A dialog box appears, allowing you to select what to install.

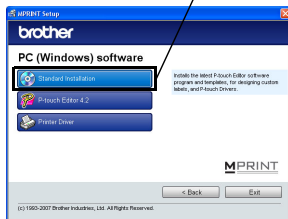
PC(Windows) software button



## 4 Click the button for the software that you wish to install. Here, click the button for the Standard Installation.

→ Installation of Standard Installation begins.

Standard Installation



## ■ Software packages that are installed

Software	Description
P-touch Editor 4.2	P-touch Editor 4.2
	P-touch Library 2.0
	P-touch Transfer Manager 2.0
	P-touch Printer Setting
	P-touch Editor 4.2 Add-Ins Utility
Printer driver	Printer driver (and driver utility)

With the standard installation, P-touch Editor 4.2, then the printer drivers will be installed. Continue with the installation according to the instructions that appear on the screen.

## 5 Follow the instructions that appear to finish the installation.

Next, the printer driver is installed.

The installation procedure for the printer driver differs depending on the operating system being used.

Select “USB” or “Bluetooth communication” and then click the OK button.



For Windows® 2000 Professional with USB



Go directly to the procedure on page 9.

For Windows® XP with USB



Go directly to the procedure on page 10.

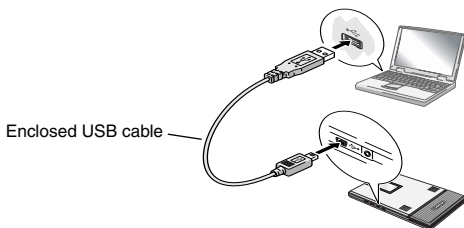
For Windows Vista with USB



Go directly to the procedure on page 11.

## For Windows® 2000 Professional, (USB connection)

- 6** When the message “Connect Brother MW-260, and then turn it on.” appears, use the enclosed USB cable to connect this printer to the computer running Windows®, and then turn on the printer.

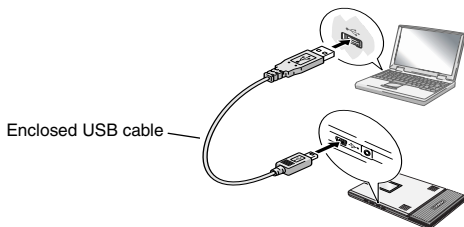


→ The printer driver is installed.

→ Continue with “Printing” on page 14.

## For Windows® XP (USB connection)

- 6** When the message “Connect Brother MW-260, and then turn it on.” appears, use the enclosed USB cable to connect this printer to the computer running Windows, and then turn on the printer.



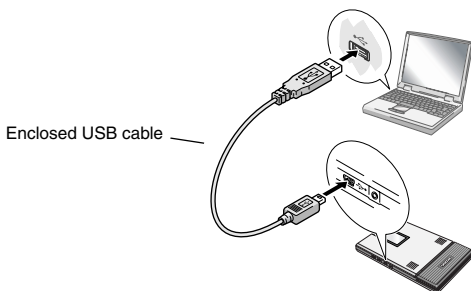
→ The Found New Hardware Wizard dialog box appears.



- Depending on the operating system being used, this may take some time.

## For Windows® Vista

- 6** When the message "Connect Brother MW-260, and then turn it on." appears in the computer screen, use the enclosed USB cable to connect this printer to the computer running Windows, and then turn on the printer.

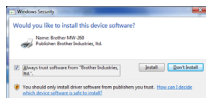


→ When the Plug and Play device is detected, the Found New Hardware Wizard. dialog box appears.



- Depending on the operating system being used, this may take some time.

## 7 Click the Install button.



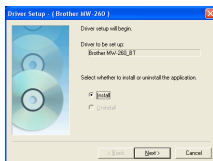
Finish the installation according to the instructions that appear on the screen.

→ Continue with “Printing” on page 14.

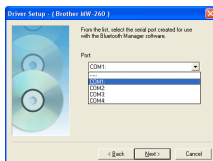
## For computer running Windows® (Bluetooth connection)

**8** Check the “Install”, and then click the next button.

→ Installing the printer driver is started.



**9** Select the COM number you are using as Bluetooth connection, and then click the next button.



→ Follow the instructions appeared on the screen, and finish installing.

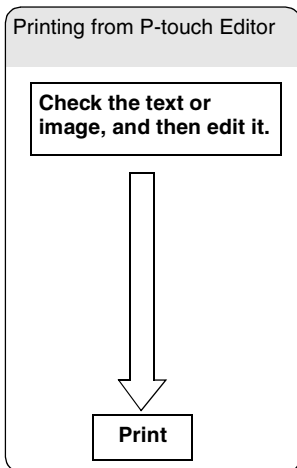
---

# Printing

---

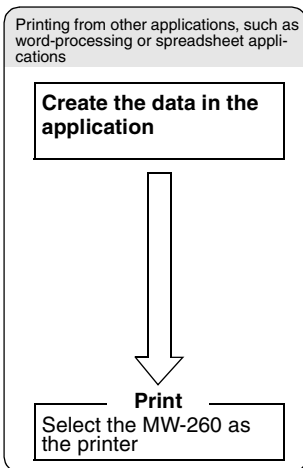
This printer can be used to print in two different ways.

## DIRECTLY FROM PC SCREEN

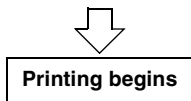


→ Refer to page 15.

## DIRECTLY FROM WINDOWS SOFTWARE PACKAGES



→ Refer to page 20.





---

## Starting up P-touch Editor

---

- 1** To start up P-touch Editor, click the Start button, and then click **All Programs - Brother P-touch - P-touch Editor 4.2**.



- P-touch Editor can also be started by double-clicking the shortcut on the desktop, or clicking the shortcut in the Quick Launch bar. (only if the shortcuts were created during installation)

→ When P-touch Editor is started, the startup dialog box appears.

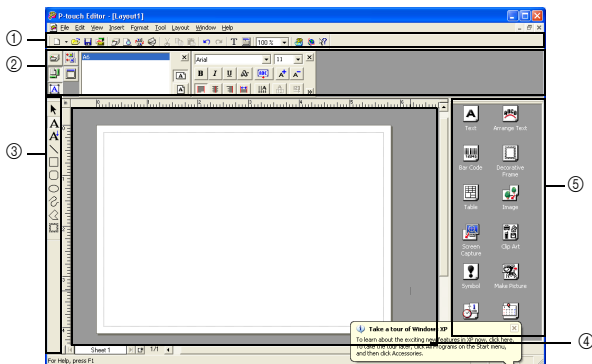
- 2** In the startup dialog box, select the desired operation, and then click the OK button.



- To specify the operation performed when P-touch Editor is started, click **Options** on the Tool menu, and then select **Display Startup Dialog Box** in the "Operations" group box on the General tab.

## Using P-touch Editor 4.2

When P-touch Editor 4.2 is started, the following appear in the main window.



- ① Standard toolbar
- ② Property dock
- ③ Draw toolbar
- ④ Layout window
- ⑤ Object dock

---

## **P-touch Editor 4.2 window structure and section functions**

---

### **① Standard toolbar**

This toolbar contains shortcuts to frequently used commands. The toolbar can be displayed or hidden by selecting it in the Toolbar submenu of the View menu.

### **② Property dock**

This dock contains the Print Properties, Page Properties, Text Properties, Layout Properties and Database Properties. Frequently used functions and settings appear in properties for each category. The number of properties that can be opened in this area depends on the width of the window. If all opened properties cannot be displayed in the property dock, properties that were previously opened are closed. The icon on the left side appears selected when the properties are open.

#### **■ Print Properties**

Specify print settings and print.

#### **■ Page Properties**

Specify the paper size and orientation.

#### **■ Text Properties**

Specify settings, such as those for the font, character size, style and color, for the selected text or the text to be created.

#### **■ Layout Properties**

Specify the alignment, enlargement/reduction, shift, rotation and grouping/ungrouping for the selected objects. All settings are available if objects are selected in the layout.

#### **■ Database Properties**

Change the database file, move, sort or search for records, change the merged fields, or switch between record view/form view.

### ③ Draw toolbar

This toolbar contains shortcuts to frequently used drawing tools. The toolbar contains various tools, including those for selecting objects, entering text and drawing.

### ④ Layout window

This is the edit window. Although the image is shown as close as possible to the final print result, there may be some differences, for example, when bar code values are recalculated. To see an image closer to the final print result, select **Print Preview** in the File menu to display a print preview. Since only one page (one sheet) can be displayed at a time, add a sheet with the lower-left icon (left side of horizontal scroll bar) to edit multiple pages.

### ⑤ Object dock

This dock contains icons for easily inserting various objects. Click an icon to display a dialog box for specifying the object settings. For example, since a dialog box with tabs for specifying the bar code protocol, the bar code data and other bar code settings appears when the "Bar Code" icon is clicked, specify the necessary settings, and then click the OK button. Dragging an icon into the layout window adds the object at the specified location.



- The "Screen Capture" icon in the object doc allows you to cut an image displayed in the screen and import it as an image object. This allows Web or e-mail content to simply be cut out and printed.

---

## Database window

---

This window appears when a database or the Label List is opened. When an add-in is started, the Label List automatically appears if the software is set to register text in the Label List. This is convenient when making labels with a format for a specific label printer.



- To use data, for example, from Excel, as a database, select **File - Database - Connect**. For details, refer to the software Help.

## Printing from other applications

If this printer is selected for printing, it can be used to print data from other applications, such as word-processing or spreadsheet applications.



- This printer is not compatible with some applications. For details on compatible applications and for information on the newest printer driver, check our Web site at <http://www.brother.com>.

## Selecting the MW-260 as the printer and printing

The procedure for Excel 2000 will be described as an example.

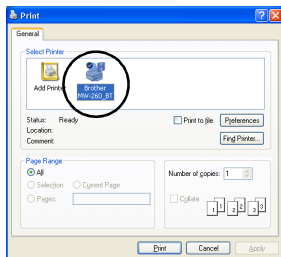
**1** Create the required data with Excel 2000.

**2** On the File menu, click **Print**.

**3** From the Printer list, select **Brother MW-260**.

**4** Click the Print button.

→ The data is sent to the printer and printed.



- The data that is to be printed should be adjusted to the size of the paper.

---

## Uninstalling the software

---

If this printer will no longer be used, P-touch Editor 4.2 and the printer driver can be removed (uninstalled).

### Removing (uninstalling) the printer driver

- 1** Click the Start button, select **Settings**, and then click **Printers and Faxes**.

→ Printers appears.

- 2** Click **Server Properties** on the File menu.

→ The Print Server Properties dialog box appears.

- 3** Click the Drivers tab, and then select “Brother MW-260”.

- 4** Click the Remove button.

→ The printer driver is removed.



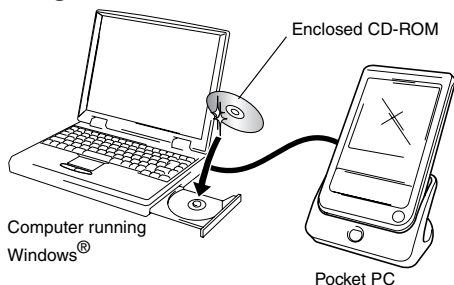
- The icon is simply removed from the list of printers; the printer driver is not deleted.

## 4 Printing Data From a Pocket PC

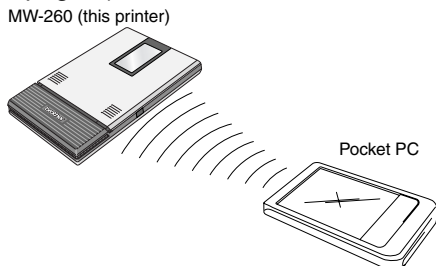
In order to use this printer to print data from a Pocket PC (PDA running Pocket PC), a computer running Windows® must be used to install the software onto the Pocket PC.

- For details on ActiveSync®, Bluetooth, or on connecting the Pocket PC to a computer running Windows®, refer to the instruction manual for the Pocket PC.

### ■ Installing the software onto a Pocket PC




### ■ Connecting the printer to the Pocket PC using Bluetooth/Printing (→ Refer to page 4)





## Installing the software

### 1 Insert the enclosed CD-ROM into the CD-ROM drive of the computer running Windows®.

- The installer automatically starts up and the Brother Select Language dialog box appears.
- If the installer does not automatically start up, double-click “My Computer”, and then choose the “CD drive”  and double-click the “setup.exe” file.

### 2 Select the language.

- The language is changed.



### 3 Click the second button (Pocket PC mobile printing software).

- The MPRINT Setup dialog box appears.



**4** Click the button for the operating system that you are using.

→ The InstallShield Wizard starts.

Continue the installation according to the instructions that appear on the screen.



## ■ Software packages that are installed


Software	Description
Common modules (The "MprintUtility" will be installed at the same time.)	Basic components of the software (The settings for this printer can be changed.)
Note Print	Prints memos saved with Notes
Schedule Print	Prints schedules saved with Schedule
Task Print	Prints tasks and appointments saved with Tasks
Contact Print	Prints names, addresses and telephone numbers saved with Contact
Clipboard Print	Prints images and text moved to the Clipboard
Screen Capture Print	Prints the currently displayed screen of the Pocket PC
Image File Print	Prints saved image files
E-mail Print	Prints saved e-mails
Help files	Operating guide that can be viewed on the screen of the Pocket PC

# Printing

This printer has eight different printing functions.

**1** Tap  on the Program screen.










→ The Brother MPrint screen appears.

**2** Check that  Note Print ,

 Schedule Print ,  E-mail Print ,  
 Task Print ,  Contact Print ,  
 Clipboard Print ,  Screen Capture Print ,  
 Image File Print and  MPrint Utility  
appear in the screen.



■ Refer to the pages indicated below for more details on the corresponding printing function.

	Note Print → page 27
	Schedule Print → page 33
	Task Print → page 36
	Contact Print → page 37
	Clipboard Print → page 38
	Screen Capture Print → page 39
	Image File Print → page 41
	E-mail Print → page 42
	MPrint Utility → page 44

## Printing procedures

First, we will describe the procedure for using the Note Print. This procedure contains the basic steps for printing.

### Note Print

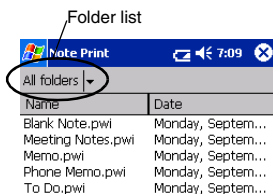
Memos saved with Notes can be printed.

**1** Tap  Note Print on the Brother MPrint screen.

→ A list of memos appears in the Note Print screen.

**2** Tap the memo that you wish to print. Only one memo can be selected.

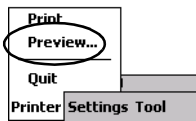
→ The selected memo is highlighted.



- To display the memos in each previously categorized folder, tap the folder list.

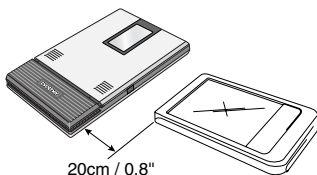
### 3 Tap **Preview** in the Printer menu.

→ The Print preview screen appears.



- If **Print** was tapped, printing will begin without the Print preview screen being displayed.

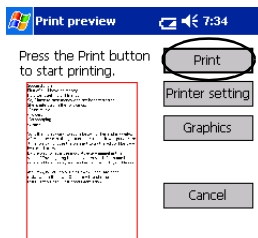
### 4 Position this printer and the Pocket PC so that their IrDA infrared ports are facing each other and within 20cm / 0.8" apart.



- Make sure that this printer is turned on.
- The IrDA infrared port is in the middle on the right side of the printer.
- Step 4 is not necessary when communicating with Bluetooth.

## 5 Tap the Print button.

→ After the Pocket PC detects this printer, printing begins.



Direct the infrared port to the printer correctly.



- The printed layout may differ depending on the size of paper selected with **Printer setting**.
- The Print preview screen allows you to view an image of the data as it will be printed. Text may be difficult to read.
- At first time using Bluetooth communication, set a port as "COM x" for using Bluetooth connection referring next page.

## Advanced settings

Precise print settings can be specified.

### ■ Printer settings

**1** Tap **Printer setting** in the Print preview screen.

→ The Printer setting screen appears.

**2** The following settings can be specified.

- **Printer:**  
MW-260 (this printer)/  
MW-100/MW-120/MW-140BT
- **Port:**  
IrDA(infrared port)/  
USB/FILE/COM1/  
COM2...COM9
- **Paper size:A6**  
The setting is adjusted  
according to the paper  
cassette that is loaded  
into the printer.
- **Printing orientation:** Portrait/Landscape
- **Print mode:** Normal/Global
- **Number of copies:** 1 through 50/Collate

ok button

Printer setting

Printer MW-260

Port COM8

Paper size A6

Printing Orientation ☒ Portrait ☐ Landscape

Print mode ☒ Normal ☐ Global

Number of copies 1

☐ Collate

Cancel



- Set a “COM x” as using Bluetooth connection.



**3** Tap .

→ The printer settings are applied.

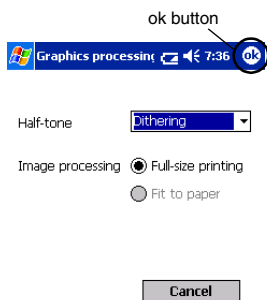
## ■ Graphics-processing settings

**1** Tap **Graphics** in the Print preview screen.

→ The Graphics processing screen appears.

**2** The following settings can be specified.

- Half-tone:  
Dithering/Error Diffusion/None
- Image processing:  
Full-size printing/Fit to paper



**3** Tap .

→ The graphics-processing settings are applied.

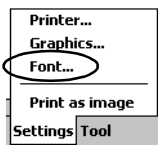


## ■ Text format settings

The font and size of the printed text can be changed.

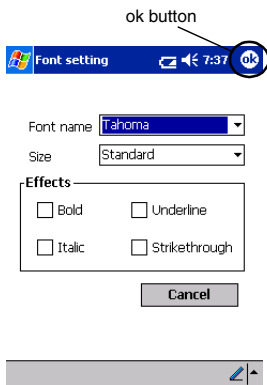
**1** Tap **Font** in the Settings menu of the Note Print screen.

→ The Font setting screen appears.



**2** The following text settings can be specified.

- Font name:  
Tahoma/Courier New/Frutiger Lino-type/Bookdings
- Size:  
Largest/Larger/Standard/Smaller/Smallest
- Effects:  
Bold/Underline/Italic/Strikethrough



**3** Tap .

→ The text format settings are applied.

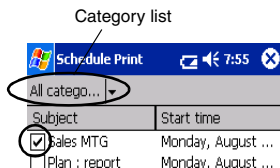
## Schedule Print

Schedules saved with Schedule can be printed.

**1** Tap  Schedule Print on the Brother MPrint screen.

→ A list of schedules appears in the Schedule Print screen.

**2** Tap the box to the left of the schedule that you wish to print.  
More than one schedule can be selected.



→ A check mark appears.



- The period of time to be printed can be specified.  
(→ “Printing a specified date” on page 35)
- To display the schedules in each previously specified category, tap the category list.

**3** Tap **Preview** in the Printer menu.

The procedure continues in the same way as with the Note Print (→ page 27).

## ■ Template setting

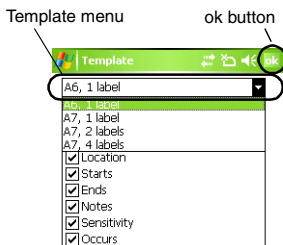
The layout in which data is printed can be specified.

- 1 Tap **Template** in the Settings menu of the Schedule Print screen.



→ The Template screen appears.

- 2 Select the template that you wish to use.



- 3 Tap .

→ The selected template is applied.

## • Examples of templates

### A6 portrait

**Welcome party**

**Location:** Pub 2nd street

**Starts:** 05 September, 2001 7:00 PM

**Ends:** 05 September, 2001 9:00 PM

**Notes:**  
contact ; john 012-345-6789

**Sensitivity:**Normal      **Occurs:**Pattern once

**Type:**Normal      **Categories:**Personal

## ■ Printing a specified date

The period of time to be printed can be specified.

- 1** Tap **Date** in the Settings menu of the Schedule Print screen.



→ The Date screen appears.

- 2** Change the date setting.

- Start date/End date/Inprogress
- Date



- 3** Tap .

→ The schedules included in the specified time period are displayed in the Schedule Print screen.



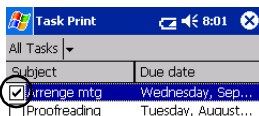
## Task Print

Tasks and appointments saved with Tasks can be printed.

**1** Tap  Task Print on the Brother MPrint screen.

→ A list of tasks appears in the Task Print screen.

**2** Tap the box to the left of the task that you wish to print.  
More than one task can be selected.



→ A check mark appears.



- The period of time to be printed can be specified.  
(→ “Printing a specified date” on page 35)
- The layout in which data is printed can be specified.  
(→ “Template setting” on page 34)

The procedure continues in the same way as with the Note Print (→ page 27).

## Contact Print

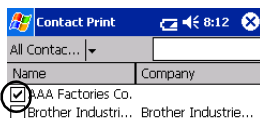
Names, address and telephone numbers saved with Contacts can be printed.

**1** Tap  Contact Print on the Brother MPrint screen.

→ A list of contacts appears in the Contact Print screen.

**2** Tap the box to the left of the contact that you wish to print.

More than one name can be selected.



→ A check mark appears.



- The layout in which data is printed can be specified.  
(→ “Template setting” on page 34)

The procedure continues in the same way as with the Note Print (→ page 27).

## Clipboard Print

The images and text moved to the Clipboard can be printed.



- The Clipboard is the name of the location where data that was cut or copied is stored.

**1** Tap  Clipboard Print on the Brother MPrint screen.


→ The contents of the Clipboard appear in the Clipboard Print screen.

The procedure continues in the same way as with the Note Print (→ page 27).



## Screen Capture Print

The currently displayed screen of the Pocket PC can be printed.

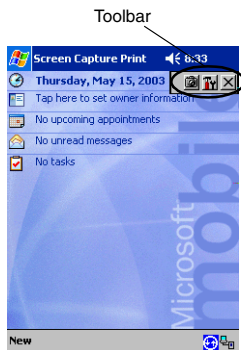
- 1** Tap  Screen Capture Print on the Brother MPrint screen.

→ A toolbar appears in the upper-right corner of the screen.

- 2** Display the screen that you wish to print.

- 3** Tap  on the toolbar.

→ The captured screen appears in the Print preview screen.



The procedure continues in the same way as with the Note Print (→ page 27).

## ■ Screen capture settings


The time until the data is imported and the size of the captured area can be specified.


- 1** Tap  on the tool-bar.

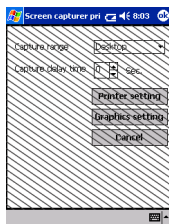
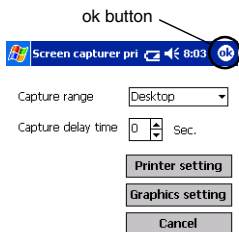


→ The Screen capture print settings screen appears.

- 2** The following text settings can be specified.

- Capture delay time:  
0 to 10 seconds  
Specifies the length of time until the image is imported after  is tapped.

- Capture range:
- Selection range (Use the stylus to select the desired area.)/Client  
(Area indicated by  in the illustration at the right)/Desktop (Entire screen)



- 3** Tap .

→ The screen capture settings are applied.

## Image File Print

Saved image files (in BMP, JPEG or PNG format) can be printed.

**1** Tap  Image File Print on the Brother MPrint screen.

→ The Image File Print screen appears.

**2** Select the file format of the image data to be searched for.

Select from the five available file formats.

- Image file (BMP, JPG or PNG)
- Bitmap file
- Jpeg file (JPG or JPEG)
- Png file
- All files

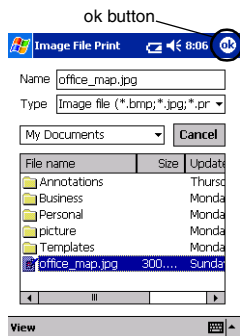
**3** Tap the image file that you wish to print.  
Only one file can be selected.

→ The selected file is highlighted.

**4** Tap .

→ The Print preview screen appears.

The procedure continues in the same way as with the Note Print (→ page 27).



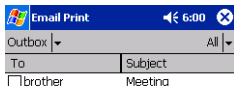
## E-mail Print

Saved e-mails can be printed.

**1** Tap  E-mail Print on the Brother MPrint screen.

→ A list of e-mails appears in the Email Print screen.

**2** Tap the e-mail that you wish to print.  
Only one e-mail can be selected.



→ The selected e-mail is highlighted.



- The layout in which data is printed can be specified.  
(→ “Template setting” on page 34)

The procedure continues in the same way as with the Note Print (→ page 27).

---

## Uninstalling the software

---

Uninstall (remove) the software using the Pocket PC functions. For details on uninstalling the software, refer to the instruction manual for the Pocket PC.

## 5 Changing Printer Settings

The following settings for this printer can be specified using the MW-260 Utility “MPrintUtility” on the both Pocket PC and Windows PC.

- Auto power-off time
- Auto sleep time
- Auto sleep/power-off time
- Power-saving setting
- Device name
- Pass key (PIN code)
- Initialize settings (resets all parameters to their default settings)

---

### Changing the settings

---

**With a computer running Windows®:**

- 1** Click the Start button, select **Settings**, and then click **Printers**.

→ The Printers dialog box appears.

- 2** Right-click  .

→ A pop-up menu appears.

- 3** Select **Properties**.

→ The Properties screen appears.

- 4** Click the MW-260 Utility button.

→ The Brother MW-260 Utility screen appears.

## With a Pocket PC:

**1** Tap  MPrint Utility on the Brother MPrint screen.

→ The Brother MW-260 Utility screen appears.

## Screens

### ■ General

The length of time [auto power-off time] until the printer automatically powers off can be specified. If “0” is specified, the printer will not automatically power off.



### ■ Bluetooth (1)

When the Bluetooth switch is set to ON, the length of time [auto sleep time] until the printer automatically enters the sleep mode and the length of time [auto sleep/power-off time] until the printer powers off after entering the sleep mode can be specified. If “0” is specified for the auto sleep time, the unit will not enter the sleep mode.

The power-saving setting can be specified.



## ■ Bluetooth (2)

The device name and the PIN code (or Passkey) can be changed.

For the device name, specify a name that contains 1-12 alphanumeric characters.

For the PIN code, specify a four-eight number only if “Activate PIN code” has been selected.

Search from Another Device

Select whether or not to search from another device.

Select this setting from the computer when the printer cannot be found.



## Closing the MW-260 Utility

**1** Tap the OK button.

→ The MW-260 Utility closes.

**brother**®