

English

Printed in China

LN9049001



www.brother.com

INTRODUCTION

With your P-touch 80, you can create labels for any application. Select from the many frames, character sizes and styles to design beautiful custom labels. In addition, the variety of tape cartridges available allows you to print labels with different widths and exciting colours. Read this manual carefully before starting and keep the manual in a handy place for future reference.

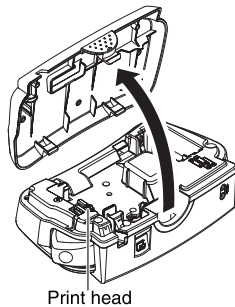
GENERAL PRECAUTIONS

- Use only Brother M tapes with this machine. Do not use tapes that do not have the mark.
- Do not clean the machine with alcohol or other organic solvents. Only use a soft, dry cloth.
- Do not touch the print head mechanism. Use a soft wipe (e.g. a cotton swab) when cleaning the print head.
- To avoid injuries, do not touch the cutter's edge.
- To prevent damage or breakage of the LCD glass, do not press on the display.
- Do not put any foreign objects into or heavy objects on the machine.
- Do not leave any rubber or vinyl on the machine for an extended period of time, otherwise the machine may be stained.
- Do not get the machine wet, such as by handling it with wet hands or spilling beverages on it.
- Do not expose the machine to extremely high temperatures or high humidity. Never leave it on the dashboard, in the back of your car, near heaters or other hot appliances. Keep it out of both direct sunlight and rain.
- Avoid using the machine in extremely dusty places.
- Depending on the environmental conditions and the applied settings, some characters or symbols may be difficult to read.
- Do not pull on the tape being fed from the P-touch, otherwise the tape cassette or P-touch may be damaged.
- Do not attempt to cut the tape while printing or feeding since this will damage the tape.
- Do not try to print labels using an empty tape cassette set in the P-touch. Doing so will damage the print head.
- Remove the batteries if you do not intend to use the machine for an extended period of time. (Note: When no power is supplied for more than two minutes, all text and format settings will be cleared. Language and clock settings will also be cleared.)
- Be sure to turn off the machine before replacing the batteries or the tape cassette.
- Do not use old and new batteries together or mix alkaline batteries with other type batteries, or set the positive and negative end in the wrong position. Otherwise the batteries may have leakage or fracture.

1 PREPARATION

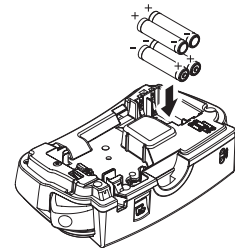
Power Supply & Tape Cassettes

- Remove the back cover by pressing in the rough area at the top end of the machine.
If a tape cassette is already installed, remove it by pulling it straight up. Also, if batteries are already installed, remove them.
 - Be sure to turn off the machine before replacing the batteries or the tape cassette.

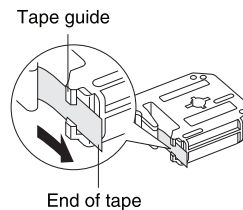


Print head

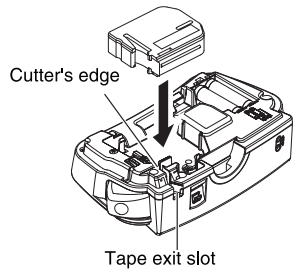
- Insert four new AAA-size alkaline batteries (LR03), making sure that their poles point in the correct directions. Always replace all four batteries at the same time using brand new ones.



- Insert a tape cassette, making sure that it snaps into place.



End of tape

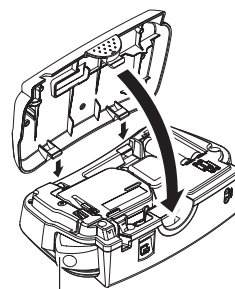


Tape exit slot

- Make sure that the end of the tape feeds under the tape guides.
- Use only Brother M tapes with this machine.

- Attach the back cover by inserting the two hooks at the bottom into the slots on the machine, then pushing down firmly on the cover until it snaps into place.

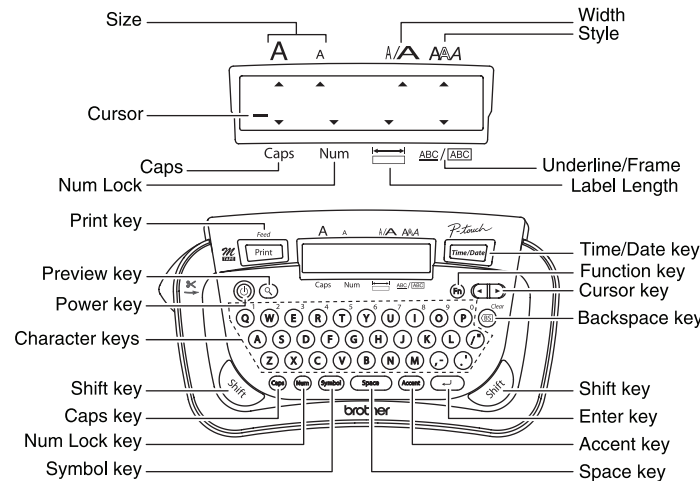
- After you have installed the tape, feed the tape (+) once and then push in the tape cutter lever to cut the tape.



Tape cutter lever

2 OPERATION

Keyboard & LCD



- The LCD shows one row of 12 characters; however, the text that you enter can be up to 80 characters in length, which will scroll across the display.
- Use Cursor key while holding down Shift key to go to beginning / end of the text.

Initial Setting

- Start your machine**
Provide power by installing four AAA batteries, and then press .
- Set your language (Language options depend on the country of purchase.)**

Choose a language with and press .
- Set Date (DD/MM/YY) and Time (hh:mm)**
Example: setting the clock to 20th March 2006, 15:30
Date (DD/MM/YY)

input "20" input "03" input "06"
Time (hh:mm)

input "15" input "30"
You can also confirm the current setting and continue to the next setting by pressing the right cursor key.

- The machine automatically turns off if no key is pressed within 5 minutes.
- To cancel operations, press .
- To return the P-touch to its factory settings, turn it off, and then while holding down and , press to turn the machine back on. Finally, release and .

3 REFERENCE

Troubleshooting

Error message

| Message | Cause/Remedy |
|----------|---|
| Battery | The batteries are weak. Replace them with new ones. |
| Invalid | An invalid number was specified as the Label Length setting. |
| No Text | <ul style="list-style-type: none">The Print key or Preview key is pressed when no text has been entered.A Copies (copy printing) setting was being specified, when no text is entered. |
| Line Lmt | Line Limit. You can have up to 2 printable lines. was pressed to enter a third line. |
| Full | The maximum number of characters (80 characters) have already been entered. |
| Text Lmt | Text Limit. The text length exceeds the selected label length or the selected Auto Format setting length. |

What to do when...

| Problem | Solution |
|---|---|
| The display stays blank after you have turned on the machine. | <ul style="list-style-type: none">Check that the batteries are correctly inserted.If the batteries are weak, replace them. |
| Language setting of the machine is incorrect. | <ul style="list-style-type: none">Turn off the machine and then while holding down and , press to turn the machine back on. Finally, release and .Note: The text and formats in the display are erased. Also, the language, unit and clock settings will be cleared. |
| The machine does not print, or the printed characters are not formed properly. | <ul style="list-style-type: none">Check that the tape cassette has been inserted correctly.If the tape cassette is empty, replace it.Make sure that the back cover is properly closed. |
| The setting has been lost. | <ul style="list-style-type: none">The batteries may be weak. Replace them.When no power is supplied for more than two minutes, all text and formats in the display will be lost. Language, unit and clock settings will also be cleared. |
| A blank horizontal line appears through the printed label. | <ul style="list-style-type: none">There may be some dust on the print head. Remove the tape cassette and use a dry cotton swab to gently wipe the print head with an up-and-down motion. |
| The machine has "locked up" (i.e., nothing happens when a key is pressed, even though the machine is on). | <ul style="list-style-type: none">Turn off the machine, and then while holding down and , press to turn the machine back on. Finally, release and .Note: The text and formats in the display are erased. Also, the language, unit and clock settings will be cleared. |
| The machine turns off when you try to print. | <ul style="list-style-type: none">The batteries may be weak. Replace them. |
| The tape does not feed properly or the tape gets stuck inside the machine. | <ul style="list-style-type: none">Make sure that the end of the tape feeds under the tape guides.The cutter lever was used while printing. Do not touch the cutter lever during printing. |
| All text and format settings need to be cleared to create a new label. | <ul style="list-style-type: none">Press while holding down , or press , then . |

Specifications

| Item | Specification |
|---------------|---|
| Dimensions | 172 mm (W) × 100 mm (D) × 58 mm (H) |
| Weight | 240 g (without batteries and tape cassette) |
| Power supply | Four AAA-size alkaline batteries (LR03) |
| Tape cassette | Brother M tape (width) : 9 mm, 12 mm |

1 MAKING TEXT

Switching Upper Case/Lower Case

Caps \rightarrow **A** **B** **C** **D**

Upper case (ON)

A **B** **C** **D** **_**

Caps

Lower case (OFF)

a **b** **c** **d** **_**

Entering Numbers

Num \rightarrow **Q**¹ **W**² **E**³

Num Lock ON

1 **2** **3** **_**

Num

Num Lock OFF

¶ **w** **e** **_**

Entering Symbols

Symbol \rightarrow **◀▶**

.,:;'"'•

01

↵

| Group | Symbols | Group | Symbols |
|-------|--|-------|-------------------------------------|
| 1 | . , : ; " ' • | 7 | \$ ¢ € £ ¥ ° ✓ |
| 2 | @ – & ~ _ \ / | 8 | ² ³ ● ○ ★ ♥ ♪ |
| 3 | # % ? ! ¡ ¢ £ ¤ | 9 | ⊙ ⚠ ☠ ☎ ☎ ☎ ☎ |
| 4 | + - × ÷ ± = | 10 | * ☼ ☼ ☼ ☼ ☼ ☼ ☼ |
| 5 | () [] < > | 11 | ☼ ☼ ☼ ☼ ☼ ☼ ☼ |
| 6 | \rightarrow \leftarrow \uparrow \downarrow | | |

- To go to the next group, press .
- To cancel operations, press .

Entering Accented Characters

A ~ **Z** \rightarrow **Accent** \rightarrow **Accent** / **◀▶** \rightarrow **↵**

| | Accented Characters | | Accented Characters |
|---|---------------------|---|-----------------------|
| A | Á Â Ã Ä Å Æ Æ Æ Æ Æ | a | á â ã ä å æ ã ã ã ã ã |
| C | Ç Ć Ć | c | ç ĉ ĉ |
| D | Đ Đ | d | đ đ đ |
| E | É Ê Ë Ë Ë Ë Ë Ë | e | é è ê ë ě ě ě ě |
| G | Ĝ Ĝ | g | ĝ ĝ |
| I | Í Î Ï Î Î Î Î Î | i | í î ï î î î î î |
| K | Ķ Ķ | k | ķ ķ |
| L | Ł Ł Ł Ł Ł | l | ł ł ł ł ł |
| N | Ń Ń Ń Ń Ń | n | ń ñ ñ ñ ñ |
| O | Ó Ô Õ Ø Õ Õ Õ Õ Õ | o | ó ô õ ø õ õ ð ð ð |
| R | Ř Ř Ř | r | ř ř ř |
| S | Š Š Š Š Š | s | š š š š š |
| T | Ť Ť Ť | t | ť ť ť |
| U | Ú Û Ü Ü Ü Ü Ü Ü | u | ú û ü ü ü ü ü ü |
| Y | Ý Ÿ | y | ý ŷ |
| Z | Ž Ž Ž | z | ž ž ž |

- To cancel operations, press .
- The order of accented characters differ by the selected LCD language.

Making Two-Line Text

Move the cursor to where the second line will start, and press **↵**.

Display

a**b****c****+****d****e****f****_**

Label image

abc
def

2 DESIGNING LABELS

Setting [Size]

(+ ¹)

\rightarrow **◀▶** [Size] **↵** \rightarrow **◀▶** [Large] **↵**

[Large]

J.SMITH

[Small]

J.SMITH

Setting [Width]

(+ ²)

\rightarrow **◀▶** [Width] **↵** \rightarrow **◀▶** [×2] **↵**

[Normal]

J.SMITH

[×2]

J.SMITH

[×1/2]

J.SMITH

Setting [Style] (Vertical)

(+ ³)

\rightarrow **◀▶** [Style] **↵** \rightarrow **◀▶** [Vertical] **↵**

[Normal]

J.SMITH

[Bold]

J.SMITH

[Outline]

J.SMITH

[Shadow]

J.SMITH

[Italic]

J.SMITH

[I+Bold] (Italic Bold)

J.SMITH

[I+Out] (Italic Outline)

J.SMITH

[I+Shadow] (Italic Shadow)

J.SMITH

[Vertical]

↵ · ∑ − − − −

Setting [Undl/Frm] (Underline/Frame)

(+ ⁴)

\rightarrow **◀▶** [Undl/Frm] **↵** \rightarrow **◀▶** [Undl] **↵**

[Off]

ABC

[Undl] (Underline)

ABC

[Round]

ABC

[Candy]

ABC

[Callout]

ABC

[Banner]

ABC

[Wooden]

ABC

Setting [Length] (Label Length)(Auto / 30 - 300mm)

(+ ⁵)

\rightarrow **◀▶** [Length] **↵** \rightarrow **◀▶** **30mm** **↵**

- You can also select the length by entering the length with ¹ ~ ⁰.
- To return to [Auto], press **Space**.

Setting [A/F](Auto Format)

(+ ⁶)

You can choose label length from five formats to create labels for various applications.

\rightarrow **◀▶** [A/F] **↵** \rightarrow **◀▶** [VCR VHS] **↵**

| LCD | Application | Length |
|----------|---------------------|--------|
| VCR VHS | Cassette spine | 140mm |
| MiniDV | Cassette spine | 42mm |
| Audio | Cassette case spine | 89mm |
| File Tab | File tab | 82mm |
| Divider | Divider Tab | 42mm |

To Clear

Entries will be deleted backwards. By pressing , you will delete a character. (To delete a whole line of text, keep pressing .)

To Clear All Text and Settings

(+ ⁹)

Shift +

\rightarrow **◀▶** **AllClear** **↵** \rightarrow **Clear?** **↵**

- This will not affect the clock or language settings.

3 PRINTING LABELS

Text Preview

You can preview the text before printing.

- The LCD shows the whole text and the label length (inch/mm), then returns to the original text.
- Only the text can be previewed, not the font, style, size, underline/frame or any additional features.

Feeding (Tape Feed)

Shift + **Print**

- The machine will feed 25 mm of tape, which should be done after installing a new tape cassette.

Printing

Print

- To cut off the label, push in the tape cutter lever on the upper-left corner of the machine.
- To prevent damage to the tape, do not try to cut while the message "Print" or "Feed" is displayed.

Using Copies

(+ ⁷)

You can print up to 9 copies of each label.

\rightarrow **◀▶** [Copies] **↵** \rightarrow **◀▶** **1-9? 5** **↵**

You can also select the number of copies by entering with ¹ ~ ⁰.

COMPLETED LABELS

00Z1E<0T0 0000

☎05(8632)-4112

♥New York 01/01/06

⊘ DO NOT TOUCH

<<<< Ken Sampson >>>> Ken.S@P-touch.com

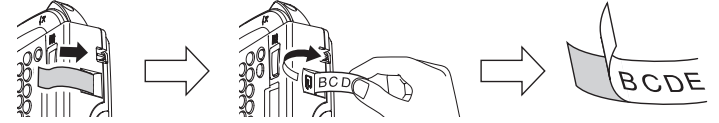
🌸 Merry Xmas 🌸

Peel the printed label from the backing and then apply the label.

Removing the Label Backing

This machine is equipped with a peeler that allows you to easily remove the backing from labels.

- Insert the label, with the printed surface facing down, as far as possible into the built-in peeler.
- Fold back the label to the right and quickly pull out the label. The end of the backing is separated from the label.



USEFUL FUNCTIONS

Time & Date Function

(+ ⁸)

You can insert the desired time and date into your text at the touch of a button. Time and Date can be printed in one of the 8 different formats. You can change the time/date by changing the clock setting.

To add the time and date to your text:

a**b****c** **_**

Time/Date

\Rightarrow

b**c** **20/03/06** **_**

The cursor should be positioned where you wish to insert the time and date.

To select the format of the time and date:

◀▶ **TimeDate** **↵** **◀▶** *** Format *** **↵**

◀▶ *** D/M/Y hm *** **↵**

| Format | Description | Example (20th March 2006, 15:30) |
|----------|----------------------|----------------------------------|
| D/M/Y | Date/Month/Year | 20/03/06 |
| D/M/Y hm | Date/Month/Year time | 20/03/06 15:30 |
| D.M.Y | Date.Month.Year | 20.03.06 |
| D.M.Y hm | Date.Month.Year time | 20.03.06 15:30 |
| Y-M-D | Year-Month-Date | 06-03-20 |
| Y-M-D hm | Year-Month-Date time | 06-03-20 15:30 |
| M/D/Y | Month/Date/Year | 03/20/06 |
| M/D/Y hm | Month/Date/Year time | 03/20/06 15:30 |

To change the Clock Setting:

Example: Setting the clock to 20th March 2006, 15:30

◀▶ **TimeDate** **↵** **◀▶** *** Clock *** **↵** \rightarrow

Setting Date (DD), Month (MM), Year (YY)

\rightarrow **DD/01/06** **↵** \Rightarrow **20/MM/06** **↵** \Rightarrow **20/03/YY** **↵** \rightarrow

input "20" input "03" input "06"

Setting Hour (hh) and Minute (mm)

\rightarrow **hh:00** **↵** \Rightarrow **15:mm** **↵**

input "15" input "30"

You can also confirm the current setting and continue to the next setting by pressing the right cursor key.

Function Shortcuts

(+ ¹ ~ ⁹)

In addition to the basic steps to search for a function, PT-80 provides you with function shortcuts so you can easily jump to a frequently used function just by pressing and the shortcut key shown in the table below. To confirm, press **↵**.

| Key | Function | Key | Function |
|--------------|-----------------|--------------|-------------|
| ¹ | Size | ⁶ | Auto Format |
| ² | Width | ⁷ | Copies |
| ³ | Style | ⁸ | Time & Date |
| ⁴ | Underline/Frame | ⁹ | All Clear |
| ⁵ | Label Length | | |