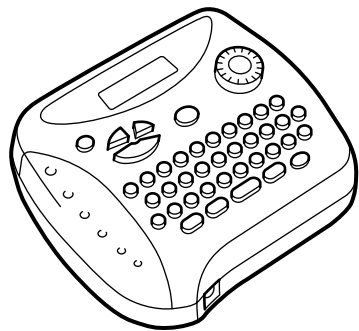


# P-touch 1260

## USER'S GUIDE



At your side.  
**brother**

LW1133001  
Printed in China

This equipment is marked with the above recycling symbol. It means that at the end of the life of the equipment you must dispose of it separately at an appropriate collection point and not place it in the normal domestic unsorted waste stream. This will benefit the environment for all.

Note: Marking is in compliance with EU Directive 2002/96/EC and EN50419.



**Declaration of Conformity**

We, BROTHER INDUSTRIES, LTD., 15-1, Naeshiro-cho, Mizuho-ku, Nagoya 487-8561, Japan declare that the Labelling System PT-1260 conforms with the following normative documents:

Safety: EN60950-1:2001 (AC adapter)  
EMC: EN55022:1998/A1: 2000/A2: 2003 Class B  
EN55024:1998/A1: 2001/A2: 2003  
EN61000-3-2: 2000  
EN61000-3-3: 1995/A1: 2001  
EN61000-3-3: 1995/A1: 2001

and follows the provisions of the Electromagnetic Compatibility Directive 89/336/EEC (as amended by 91/263/EEC and 92/31/EEC).

Issued by: BROTHER INDUSTRIES, LTD.

With your P-touch 1260, you can create labels for any application. Select from the many frames, character sizes and styles available to design beautiful to print labels with different widths and exciting colours. Read this manual carefully before starting and keep the manual in a handy place for future reference.

# INTRODUCTION

### GENERAL PRECAUTIONS

- Use only Brother TZ tapes with this machine. Do not use tapes that do not have the mark.
- Do not disassemble or modify the machine/AC adapter.
- Do not clean the machine with alcohol or other organic solvents. Only use a soft, dry cloth.
- Do not touch the print head mechanism. Use a soft wipe (e.g. a cotton swab) or the optional print head cleaning cassette (TZ-CL3) when cleaning the print head.
- To avoid injuries, do not touch the cutter's edge.
- To prevent damage or breakage, do not press on the LCD display.
- Do not put any foreign objects into or heavy objects on the machine.
- Do not leave any rubber or vinyl on the machine for an extended period of time, otherwise the machine may be stained.
- Do not get the machine/AC adapter/power plug wet, such as by handling them with wet hands or spilling beverages on to them.
- Do not expose the machine/AC adapter to extremely high temperatures or high humidity. Never leave them on the dashboard or in the back of your car, near heaters or other hot appliances. Keep them out of both direct sunlight and rain.
- Avoid using the machine in extremely dusty places.
- Depending on the environmental conditions and the applied settings, some characters or symbols may be difficult to read.
- Do not pull on the tape being fed from the P-touch labeler, otherwise the tape cassette or P-touch labeler may be damaged.
- Do not attempt to cut the tape while printing or feeding since this will damage the tape.
- Do not try to print labels using an empty tape cassette set in the P-touch labeler. Doing so will damage the print head.
- Remove the batteries and disconnect the AC adapter if you do not intend to use the machine for an extended period of time. (Note: When power is disconnected for more than three minutes, all text, format settings and any text files stored in the memory will be cleared.)
- Do not use old and new batteries together or mix alkaline batteries with other type batteries, or set the positive and negative end in the wrong position. Otherwise, the batteries may leak or be damaged.
- Do not use metallic articles, such as tweezers or metallic pen, when changing the batteries.
- Always use the specified voltage and the suggested AC adapter (MODEL-G1) for this machine to prevent any damage or failure.
- To prevent fire or electric shock, make sure that the plug of the AC adapter is fully inserted into the power outlet. Do not use an outlet that is loose.

### POWER SUPPLY

#### Batteries

Since this machine is compact and portable, it can be used anywhere by installing six AAA alkaline batteries (LR03). When changing the batteries, always replace all six at the same time.

- 1 Press in on the rough area at the top end of the machine and fold open the back cover.
- 2 If batteries are already installed, remove the tape cassette (if one is installed) by pulling it straight out, and then remove the batteries.
- 3 Insert the batteries into the battery compartment with the positive end of the bottom three batteries pointing toward the top end of the machine, and the positive end of the top three batteries pointing in the opposite direction.
 

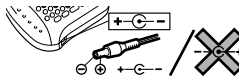
**Note:** When replacing the batteries, insert the new ones within three minutes of removing the old ones, otherwise all text shown in the display and any text files stored in the memory will be lost (unless the machine is plugged into an outlet with the AC adapter).
- 4 Securely close the back cover, making sure that it snaps into place.



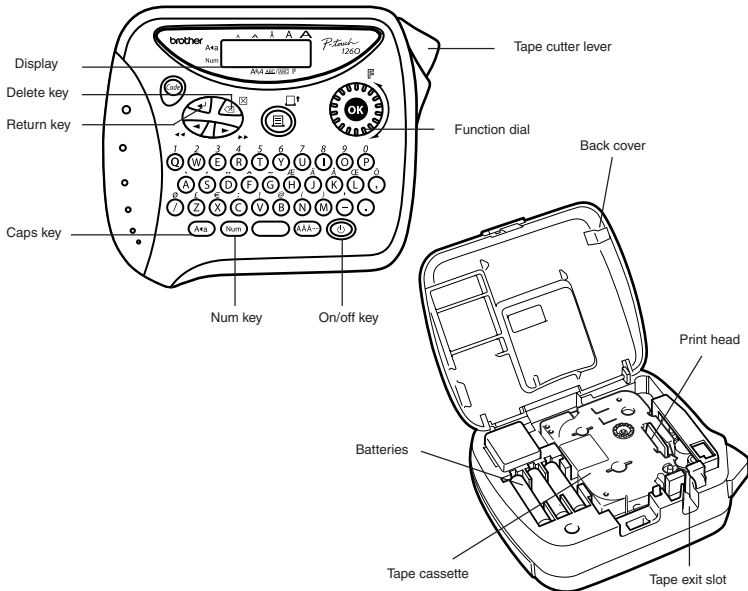
#### Optional AC adapter (Included in PT-1260VP)

The AC adapter allows you to use this machine wherever an electrical outlet is available.

- 1 Insert the plug on the adapter cord into the adapter socket on the bottom end of the machine.
- 2 Insert the plug into the nearest standard electrical outlet.



### OVERVIEW



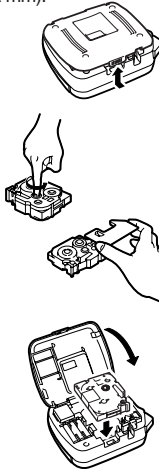
### TAPE CASSETTES

A TZ tape cassette is supplied with this unit. The Brother TZ tapes used with this machine are available in a variety of colours and three tape widths (6 mm, 9 mm and 12 mm).

- 1 Press in on the rough area at the top end of the machine and fold open the back cover.
- 2 If a tape cassette is already installed, remove it by pulling it straight up.
- 3 If the ink ribbon in the other tape cassette is loose, use your finger to wind the toothed wheel in the direction of the arrow on the cassette until there is no slack in the ribbon. Also, make sure that the end of the tape feeds under the tape guides.
 

**Note:** If you are using a new tape cassette provided with a stopper, be sure to remove the stopper.
- 4 Insert the tape cassette firmly into the compartment, making sure that the entire back of the cassette contacts the bottom of the compartment.
 

**Note:** When inserting a tape cassette, make sure that the inner ribbon does not catch on the corner of the metal guide.
- 5 Securely close the back cover, making sure that it clicks into place.
- 6 Feed the tape by holding down and pressing once, and then push in the tape cutter lever to cut the tape.



### STARTING

Press . If batteries have been installed or the machine has been plugged in using the optional AC adapter, the previous session's information is displayed when the machine is turned on. This feature allows you to stop work on a label and turn off the machine, then return to it later without having to re-enter the text. The machine automatically turns off if no key is pressed within five minutes. The current session's information is stored in the machine's internal memory and displayed when the machine is later turned on again.

### CODE KEY

By holding down and pressing a key with a function, character or accent written in blue above it, you can use the corresponding function or add the corresponding character to your text.

### CAPS KEY

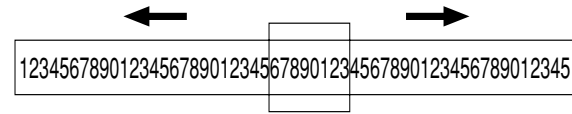
By pressing to enter **Caps** mode, you can add upper-case letters to your text by simply pressing the character keys. When this mode is on, the **Caps** indicator in the top-left corner of the display comes on. To exit **Caps** mode, press until the **Caps** indicator goes off.

### NUM KEY

By pressing to enter **Num** mode, you can add numbers to your text by simply pressing the corresponding keys. When this mode is on, the **Num** indicator in the bottom-left corner of the display comes on. To exit **Num** mode, press until the **Num** indicator goes off.

### DISPLAY

This machine's LCD shows one row of 8 characters; however, the text that you enter can be up to 55 characters in length. The 8-character display is like a window which moves across the text.



### CURSOR MOVEMENT

You can view and edit different parts of the text by moving the cursor backward and forward.

- To move the cursor one character at a time, press or .
- To move the cursor to the beginning of the text, hold down and press .
- To move the cursor to the end of the text, hold down and press .

### DELETE KEY

This key can be used to remove characters from your text, clear all of the text or cancel functions.

- To delete the character to the left of the cursor or to cancel a function (instead of pressing ) , press .
- To clear all of the text that is currently entered, hold down and press .

### SPACE KEY

As on a word processor, press to add a blank space to your text.

### RETURN KEY

Press when you wish to select a setting, or end the first line of text and start the second.

- To add a second line, press once. The return mark (↵) appears in the text to indicate the end of the first line and the beginning of the second.
 

**Note:** Two lines of text can only be entered if 9- or 12-mm-wide tape is installed.
- To select an item from a list, press once.

### COMPOSITE CHARACTERS

You can add composite characters, which consist of a letter and a diacritical mark (´, `; ^, ~, and ~).

Diacritical mark	Letters which can be combined
´	A E I O U a e i o u
`	A E I O U a e i o u
^	A E I O U a e i o u y
~	A E I O U a e i o u
~	A N O a n o

- 1 Hold down and press the key of the diacritical mark that you want to enter.
- 2 Press if you want the accented character to be an uppercase letter.
- 3 Press the key of the letter that you wish to combine with the diacritical mark. The letter and diacritical mark are added to the text.

### ACCENTED CHARACTERS

You can also choose from a list of other accented characters that can be added to your text.

Letter	Accented character	Letter	Accented character
A	Á Â Ã Ä Å Æ	a	á â ã ä å æ
C	Ç	c	ç
E	É Ê Ë	e	é ê ë
I	Í Î Ï	i	í î ï
N	Ñ	n	ñ
O	Ó Ô Õ Ö Ø	o	ó ô õ ö ø
U	Ú Û Ü	u	ú û ü
		y	ÿ

- 1 Press if you want the accented character to be an uppercase letter.
 

**Note:** To quit the following procedure at any time without making any changes, press .
- 2 Press . The message "A-Y?" appears in the display.
- 3 Turn the (Function) dial until the cursor is positioned under the desired accented character.
 

**OR**

Press the key for the letter in the accented character that you wish to add, and then press and until the cursor is positioned under the desired accented character.
- 4 Press the (or ) to add the selected character to your text.

### SYMBOLS

In addition to the letters, symbols, and numerals on and above the keys, there are 75 symbols available with the **Symbol** function. These symbols are divided into 10 groups, corresponding to the letters A to J.

Group	Symbols
A	+ ± ÷ × = \ [ ]
B	< > << >> # ? ¿ ¡
C	: ; " & # \$ % * B
D	° ° ∂ ∅ b b μ √
E	← → ↑ ↓ \$ £ DM Fr
F	ij ° % ★ ∞ ∫ ∫ ∫ ∫
G	☎ ☎ ∆ ∆ ∆ ∆ ∆ ∆ ∆ ∆
H	☎ ☎ ☎ ☎ ☎ ☎ ☎ ☎ ☎ ☎
I	↓ ∆ ∆ ∆ ∆ ∆ ∆ ∆ ∆
J	☎ ☎ ☎ ☎ ☎ ☎ ☎ ☎ ☎ ☎

- Note:**
- The use of certain symbols may be governed by local, national or European regulation. Therefore, check that any symbol printed conforms to these regulations before it is used.
  - To quit the following procedure at any time without making any changes, press .
- 1 Turn the until **SYMBOL** is displayed, and then press the (or ). The message "A-J?" appears in the display.
  - 2 Turn the until the cursor is positioned under the desired symbol.
 

**OR**

Press the key for the letter of the group containing the symbol that you wish to add, and then press and until the cursor is positioned under the desired symbol.
  - 3 Press the (or ) to add the symbol to the text.

