

P-touch  
QL-1050/1050N

# QUICK START GUIDE

## [Getting Started]

### Introduction

Thank you for purchasing the QL-1050/1050N. This guide briefly describes the steps to start using your QL-1050/1050N. Refer to the Software User's Guide for more detailed information. The Software User's Guide can be found in the Manuals folder of the CD-ROM included with the QL-1050/1050N.

Declaration of Conformity	
We	BROTHER INDUSTRIES, LTD. 15-1, Naeshiro-cho, Mizuho-ku, Nagoya 487-8561, Japan
declare that the Labelling System QL-1050 conforms with the following normative documents:	
Safety:	EN60950-1:2001/A11:2004
EMC:	EN55022:1998/A1:2000/A2:2003 Class B EN55024:1998/A1:2001/A2:2003 EN61000-3-2:2000 EN61000-3-3:1995/A1:2001
following the provisions of the Low Voltage Directive 73/23/EEC (as amended by 93/68/EEC) and Electromagnetic Compatibility Directive 89/336/EEC (as amended by 91/263/EEC and 92/31/EEC and 93/68/EEC).	
Issued by:	BROTHER INDUSTRIES, LTD. Quality Management Dept. Printing & Solutions Company
The enclosed interface cable should be used in order to ensure compliance with the limits for EMC.	

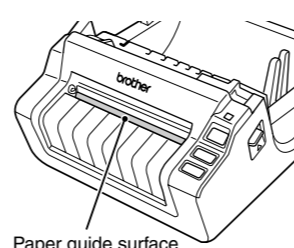


Note: Marking is in compliance with EU Directive 2002/96/EC and EN50419.

This equipment is marked with the above recycling symbol. It means that at the end of the life of the equipment you must dispose of it separately at an appropriate collection point and not place it in the normal domestic unsorted waste stream. This will benefit the environment for all. (European Union only)

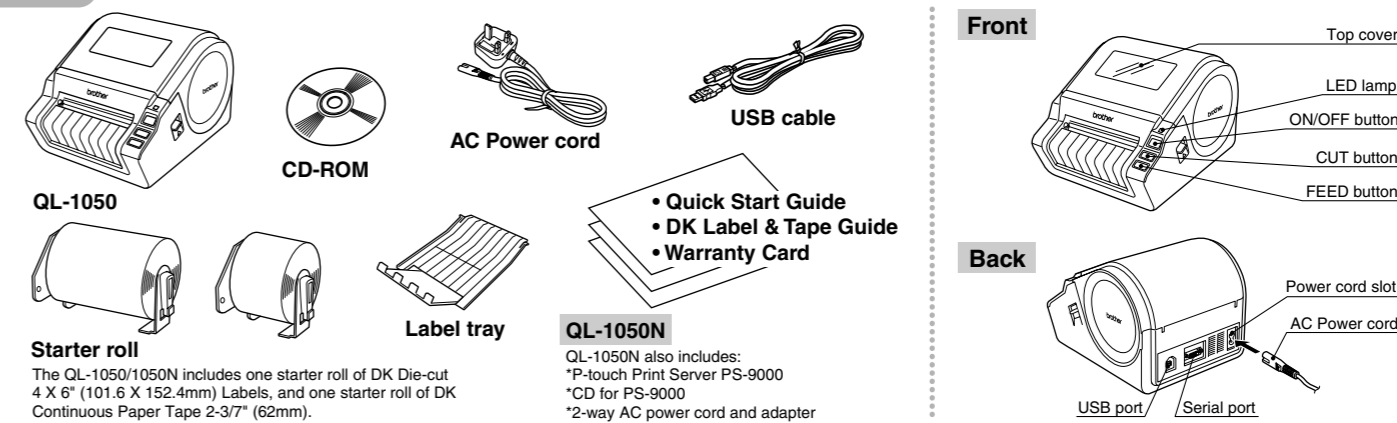
### Safety Precautions and Other Information

- Always hold the plug when removing the power cord from or inserting it into the outlet. Do not pull on the cord when removing it from the electrical socket. The wire in the cord may become damaged.
- Do not use included power cord with other products. Do not use a damaged power cord.
- Use only the authorized power source and USB cable for the QL-1050/1050N.
- Unplug the power cord immediately and stop using the printer if you notice any abnormal odor, heat, discoloration, deformation or anything unusual whilst the printer is in use or storage.
- Do not remove the power cord from nor insert it into the electrical outlet with wet hands.
- Be sure to disconnect the QL-1050/1050N from the power outlet when not using the QL-1050/1050N for any extended period of time.
- The standard electrical outlet should be installed near the printer and should be easily accessible.
- The internal parts of the printer become very hot after using the label printer. Never touch the printer head with bare hands since this could cause burns.
- Do not place the QL-1050/1050N in direct sunlight, near heaters or other hot appliances, in any location exposed to extremely high or low temperatures, high humidity, or dusty locations. Standard operating temperature range: 10°C to 35°C.
- When using the printer, do not place it in an unstable environment, such as on a dilapidated table or top shelf.
- Do not clean the machine with alcohol or other organic solvents. Only use a soft, dry cloth.
- If a paper jam should occur due to a build up of adhesive on the paper guide surface, unplug the power cord from the electrical outlet and wipe away the adhesive buildup on the paper guide surface with a swab dipped in ethanol or isopropyl (rubbing) alcohol.
- Do not touch nor push the QL-1050/1050N thermal head unnecessarily, otherwise it is possible that the thermal head will be damaged so you cannot print with accuracy.
- Do not insert any objects into or block the label output or USB port or a serial port.
- Do not place any heavy objects on top of the QL-1050/1050N. Do not use the QL-1050/1050N with a foreign object in it. If water, metallic substance or any foreign object enters the QL-1050/1050N, disconnect the machine from the power, and contact the retail outlet where the QL-1050/1050N was purchased or your local authorized service center.
- Do not disassemble the QL-1050/1050N. For inspection, adjustment, and repair of the QL-1050/1050N, contact the retail outlet where the QL-1050/1050N was purchased or your local authorized service center.
- Do not put plastic packing bag near face, mouth or nose as bag may present the choking hazard. Keep of keep the plastic bag out of reach of children.
- To prevent injury from cutter unit, follow these points: Close the top cover when operating the cutter unit.
- Cutter unit is not replaceable. The average number of cuts depends on the operating environment.
- Do not apply excessive pressure to the cutter unit.
- Do not touch the blade of the cutter unit.
- Do not connect the QL-1050/1050N to your personal computer until directed to do so when installing the printer driver.
- Be careful not to scratch the CD-ROM. Do not place the CD-ROM in any location exposed to high or low temperatures. Do not place heavy objects on the CD-ROM or bend it.
- The software on the CD-ROM is intended for use with the QL-1050/1050N and may be installed on more than one PC.
- Use only genuine Brother accessories and supplies (with DK LABEL, DK TAPE, and marks). Do not use any unauthorized accessories or supplies.
- Do not apply CD/DVD labels to CD/DVD disks designed for use with ink jet printers. Labels peel off these disks easily and using disks with peeled labels can result in loss or damage of data.
- When applying CD/DVD labels, use the applicator included with the CD/DVD label rolls. Failure to do so could cause damage to the CD/DVD player.
- Users shall take full responsibility for applying CD/DVD labels. Brother accepts no responsibility for any loss or damage of data caused by the inappropriate use of CD/DVD labels.
- This equipment should not be used by children.
- LED indication
  - Lights up in green- QL-1050/1050N is operating normally.
  - Flashes in green- QL-1050/1050N is receiving data. Please do not power off.
  - Lights up in orange- The cover is open.
  - Flashes in orange- Cooling.
  - Flashes in red- Errors (user solvable)
  - Lights up in red- System error (user unsolvable)
- Microsoft and Windows are registered trademarks of Microsoft Corporation, USA.
- Macintosh and Mac OS are registered trademarks of Apple Computer, Inc.
- The names of other software or products used in this document are trademarks or registered trademarks of the respective companies that developed them.



## 1 Unpacking Your QL-1050/1050N

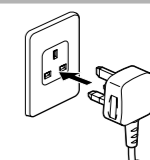
Check that the package contains the following before using your QL-1050/1050N. If any item is missing or damaged, please contact your Brother dealer.



## 2 Connecting to the Power Supply

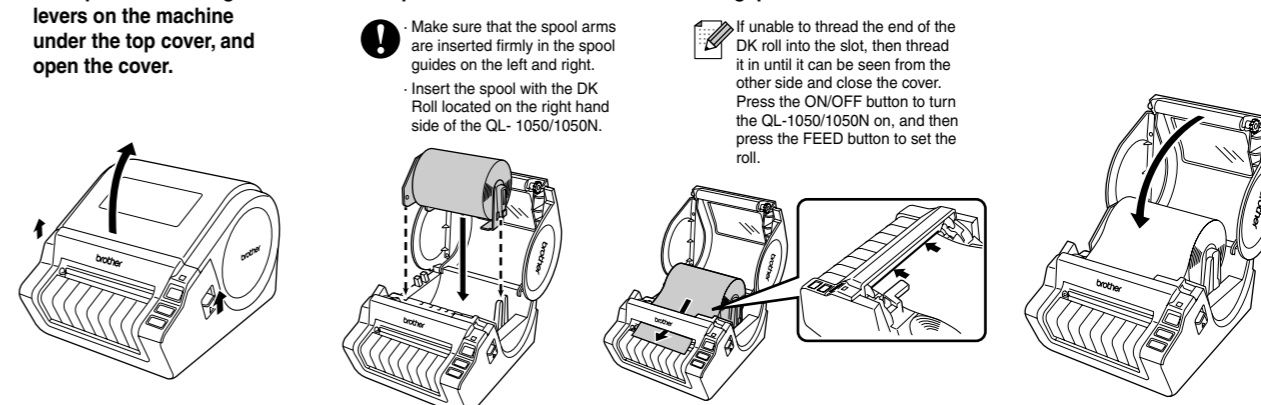
Connect the AC power cord to the QL-1050/1050N and then plug the power supply cord into a standard electrical outlet.

- Check that the electrical outlet is 220-240V AC before inserting the plug.
- Remove the power supply cord from the electrical outlet after you have finished using the QL-1050/1050N.
- Do not pull the cord when removing it from the electrical outlet. The wire in the cord may become damaged.
- Locate the printer near the outlet where the power plug can be pulled out easily.



## 3 Installing the DK Roll

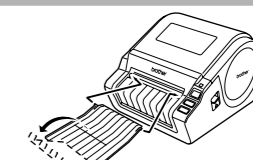
- 1 Press the ON/OFF button to turn the QL-1050/1050N off. Pull up the left and right levers on the machine under the top cover, and open the cover.
- 2 Place the spool into the spool guides in the DK Roll compartment.
- 3 Thread the end of the DK roll under the protruding portion and gap in the cutter unit.
- 4 Close the head cover until it clicks on both sides.



## 4 Installing the Label Tray

Attach the label tray to the front of the QL-1050/1050N as shown in the figure.

- Remove the label tray when printing more than 10 labels continuously and cutting each label automatically.
- When you print on a continuous roll more than 152mm in length, please close the label tray, otherwise it will cause a paper jam.



## 5 Installing the Software

The installation procedure differs depending on the operating system running on your personal computer. Refer to the installation procedure for the appropriate operating system to install the software. If you use the QL-1050N, please follow the instructions in the PS-9000 manuals.

### When using Microsoft® Windows® 2000 Professional/XP (Home/Professional)

- 1 Start up the PC and put the CD-ROM into the CD-ROM drive. The QL-Series Installer starts up and the P-touch Setup screen is displayed.
  - It may take a short time to display the screen.
  - If it does not start up automatically, double click the "Setup.exe" icon on the CD-ROM.
- 2 Click "Standard Installation". The preparation for installing the software starts and the License Agreement screen is displayed.
  - Each button selects the following operations.
    - 1 Standard Installation: P-touch Editor 4.2, P-touch Address Book 1.0, Printer Driver, and Software User's Guide are all installed.
    - 2 Custom Installation: P-touch Editor 4.2, P-touch Address Book 1.0, Printer Driver, and Software User's Guide can be installed individually.
    - 3 Display User's Guide: The Software User's Guide PDF manual can be viewed without actually installing the QL-1050/1050N software.
    - 4 Acrobat Reader will be installed. Adobe® Acrobat® Reader® can be installed so that you can view the Software User's Guide (PDF Manual).
  - Adobe® Acrobat® Reader® 5.1 will be installed. If you have this version or a later version already installed you do not have to install the program.
- 3 Read the license agreement carefully. If you agree with the terms and conditions of the license agreement, click [Yes] to continue the installation. The Customer Information screen is displayed.
- 4 Enter your user name and company name, then click [Next]. The Choose the Destination Location screen is displayed.
- 5 Click [Next]. The Add shortcut screen is displayed.
  - To install to a different folder click [Browse] and select another folder.
- 6 Check the locations where you want the installer to add the program shortcuts and click [Next]. The Start Copying Files screen is displayed.
- 7 If you are happy with your settings, click [Next].
  - It may take some time to display this screen.
  - If settings are incorrect, click [Back] and specify correct settings.
- 8 The Add-In settings screen is displayed.
  - Check the box for each Microsoft® Office® application that you want to install the Add-in for, then click [Next].
  - Make sure that you have closed all Microsoft® Office® applications.
  - For details on Add-In setting, see the "Software User's Guide (PDF Manual)".
- 9 The Driver Setup (Brother P-touch) screen is displayed.
- 10 Click [OK] on the Driver Setup (Brother P-touch) screen to start the installation.
- 11 Click [Next]. The installation of the driver is completed, the User Registration screen is displayed.
- 12 Select if you want to register your printer and then [Next].
  - If you select "Yes, display the page", you will be directed to the online user registration page. After user registration, continue with the installation (registration is recommended).
  - If you select "No, do not display the page", the installation will continue.
- 13 Click [Finish]. The software installation is now complete. Connect the printer to complete the driver installation.
  - When the installation is complete, you may be prompted to reboot the PC. To restart the PC, select "Restart" and click [Finish].
- 14 Starting up the installed software.
  - When starting P-touch Editor, click [Start] - [All Programs (Programs)] - [Brother P-touch] - [P-touch Editor 4.2].
  - When starting P-touch Address Book, click [Start] - [All Programs (Programs)] - [Brother P-touch] - [P-touch Address Book 1.0].

See the reverse side for an example of creating a label.

PS-9000 does not support Mac. So QL-1050N is not used in Mac environment.

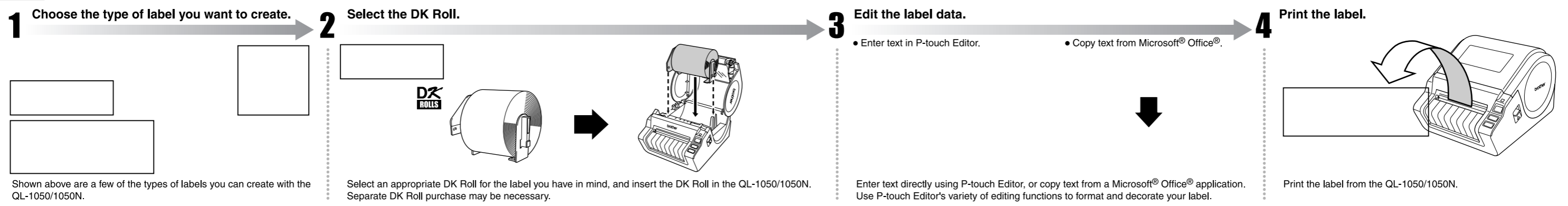
### When using Mac OS® X10.1~10.4.7

- 1 Start up your Mac® and put the CD-ROM into the CD-ROM drive. The QL-Series screen is displayed.
  - If it does not start up automatically, double click the QL-Series (CD-ROM) icon.
- 2 Click the [Mac OS X] folder and double click [P-touch Editor 3.2 Installer]. P-touch Editor 3.2 Installer starts up and the Introduction screen is displayed.
- 3 Check the content and click [Next]. The Important Information screen is displayed.
- 4 Check the content and click [Next].
- 5 Click [Next].
  - You can choose which programs are installed. Uncheck any programs that you do not want to install.
  - The Choose Alias Folder screen is displayed.
- 6 Select the location where you want to create the alias, and click [Next]. The Pre-Installation Summary screen is displayed.
- 7 Click [Install]. The installation starts. When the installation is complete, click [Done]. The software installation is now complete. Next, install the printer driver.
- 8 Double click [QL-1050 Driver.pkg] in the [Mac OS X] folder. The Driver Installer starts up and the Driver Setup screen is displayed.
- 9 Click [Continue]. The Important Information screen is displayed.
- 10 Click [Continue]. The Software License Agreement screen is displayed.
- 11 Check the content and click [Continue]. The License agreement screen is displayed. When continuing the installation, click [Agree]. The Select a Destination screen is displayed.
- 12 Select the destination you want to install, and click [Continue]. The Easy Install screen is displayed.
  - Select the drive where the Mac OS® X is installed.
- 13 Click [Install]. The screen in which the name and password of the administrator is now displayed. Input the "Name" and the "Password" of the administrator and click [OK]. The screen to check the installation is displayed. When continuing the installation, click [Continue Installation]. The installation starts.
- 14 When the installation is completed and the message "The software was successfully installed" is displayed, click [Restart]. Your Mac® will restart. The installation of the printer driver is now complete.
- 15 After rebooting, connect the USB cable and power cord to the printer.
  - Remove the caution label before connecting the USB cable.
- 16 Connect the USB cable to the USB port of the Mac®. Press the ON/OFF button (⏻) of the printer to turn on the power. If you are using a USB hub and your Mac® has problems recognizing the printer, try connecting the printer directly to your Mac®.
- 17 Double click the drive where Mac OS® X is installed, and click in order [Applications]-[Utilities]-[Printer Setup Utility (Print Center)]. The Printer List screen is displayed.
- 18 Click [Add] (Add Printer).
- 19 Click [USB]-"QL-1050" or "QL-1050N", and [Add]. The screen returns to Printer List screen.
- 20 Check that "QL-1050" or "QL-1050N" is added, and close the Printer List screen. You can start using your Brother QL-1050/1050N.
- 21 Double click the drive where P-touch Editor is installed, click in order [Applications]-[P-touch Editor 3.2] and double click P-touch Editor 3.2 icon. P-touch Editor will start.

See the reverse side for an example of creating a label.

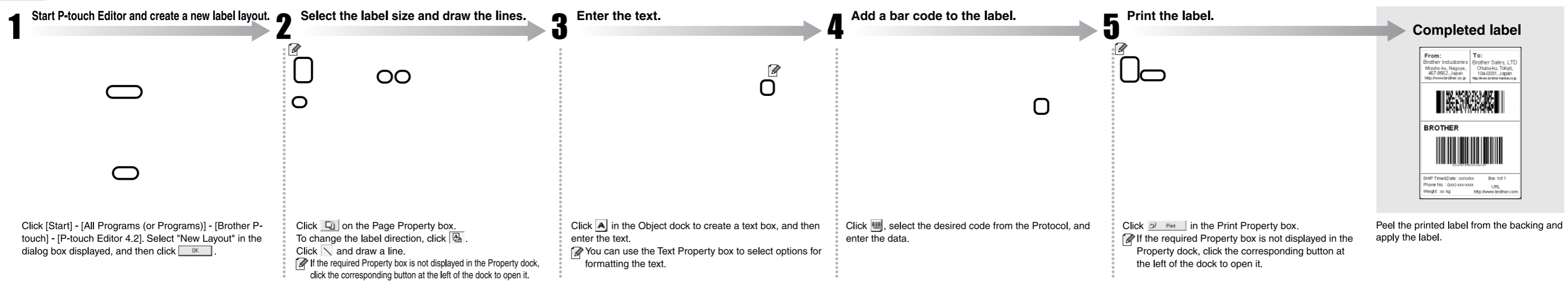
### I Label Creation Outline

This section describes the general procedure for creating labels using your QL-1050/1050N.



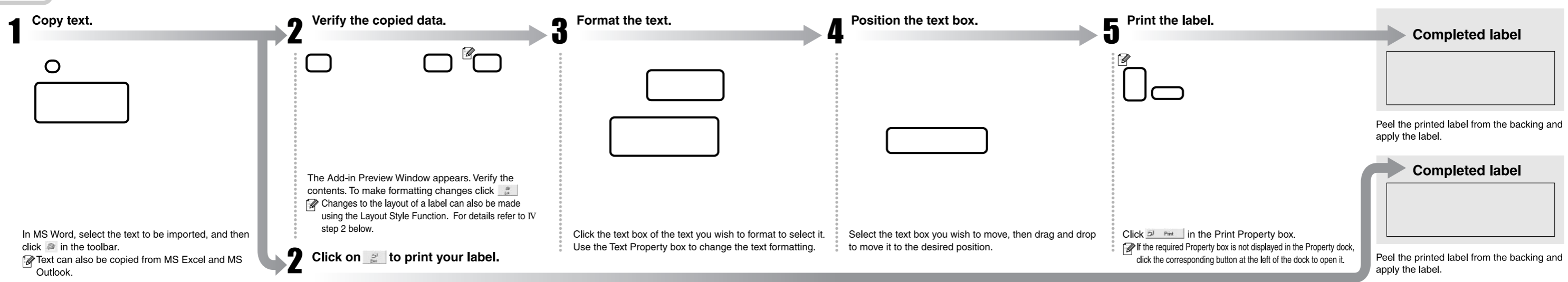
### II Creating a Shipping Label using P-touch Editor

Learn the basic workflow of P-touch Editor while creating a shipping label.



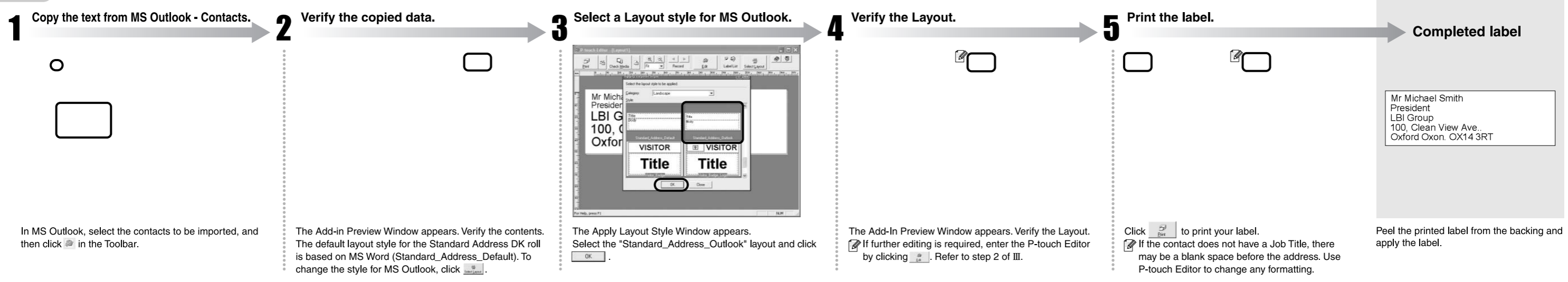
### III Creating an Address Label using Microsoft Word Add-In

Copy text from Microsoft Word and create an address label.



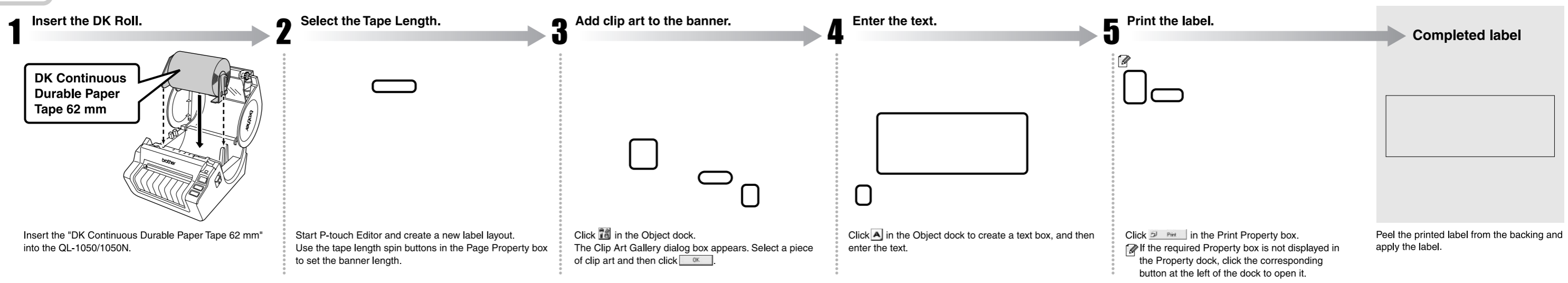
### IV Creating an Address Label using Microsoft Outlook Add-In

Create an address label using data from Microsoft Outlook, taking advantage of the Layout Style Function.



### V Creating a Banner Label

Create a banner using DK Continuous Durable Paper Tape.



### VI Creating a Name Badge Label using Auto Format Wizard function

Create a name badge label quickly and easily using the Auto Format Wizard.

