

Introduction

With your PT-1290, you can create labels for any application. Select from the many frames, character sizes, widths and styles to design beautiful custom labels. In addition, the variety of tape cartridges available allows you to print labels with different widths and exciting colours. Read this manual carefully before starting and keep the manual in a handy place for future reference.

Declaration of Conformity (Europe only)

We, **BROTHER INDUSTRIES, LTD.**
15-1, Naeshiro-cho, Mizuho-ku,
Nagoya, 467-8561, Japan

declare that this product and AC adapter are in conformity with the essential requirements of all relevant directives and regulations applied within the European Community. The Declaration of Conformity (DoC) can be downloaded from our website.

Visit <http://solutions.brother.com> -> choose region (eg. Europe) -> choose country -> choose your model -> choose "Manuals" -> choose Declaration of Conformity (*Select Language when required).

Safety Precautions

Warning

Follow these guidelines to avoid fire, burn, injury, electric shock, rupture, heat, abnormal odour and smoking.

- Always use the specified voltage and the suggested AC adapter (AD-24ES) for this machine to prevent any damage or failure.
- Unplug the adapter cord immediately and stop using the P-touch during an electrical storm.
- Do not use the machine/AC adapter in places of high humidity such as bathrooms.
- Do not overload the adapter cord.
- Do not place heavy objects on, or damage the adapter cord or plug. Do not forcibly bend or pull the adapter cord. When disconnecting the adapter cord from the power outlet, always hold the plug.
- Make sure that the plug is fully inserted in the power outlet. Do not use an outlet that is loose.
- Do not swallow the cutter stopper.
- Do not get the machine/AC adapter/adapter plug wet, such as by handling them with wet hands or spilling liquids on to them.
- Do not disassemble or modify the P-touch/AC adapter/batteries.
- Do not use metallic objects, such as tweezers or a metallic pen, when changing the batteries.
- Do not throw the batteries into fire or expose to heat.
- Disconnect the AC adapter, remove batteries immediately and stop using the machine if you notice abnormal odour, heat, discolouration, deformation or anything unusual while using or storing it.

Caution

Follow these guidelines to avoid personal injury, battery leakage, burn and heat.

- Do not touch the cutter blade or any metal parts near the print head.
- Remove the batteries and disconnect the AC adapter if you do not intend to use the P-touch for an extended period of time.
- Do not use old and new batteries together or mix alkaline batteries with other type batteries, or set the positive and negative end in the wrong position.

General Precautions

- Depending on the location, material, and environmental conditions, the label may peel or become irremovable, the colour of the label may change or be transferred to other objects. Before applying the label, check the environmental condition and the material.
- Do not use the P-touch in any way or for any purpose not described in this guide. Doing so may result in accidents or damage to the machine.
- Use Brother TZe tapes with this machine.
- Only use a soft, dry cloth to clean the machine; never use alcohol or other organic solvents.
- Use a cotton swab to clean the print head; never touch the print head.
- Do not put any foreign objects into the tape exit slot or AC adapter connector, etc.
- Do not place the P-touch/battery/adapter in direct sunlight or rain, near heaters or other hot appliances, in any location exposed to extremely high or low temperatures (e.g. on the dashboard or in the back of your car), high humidity, or dusty locations.
- Do not apply excessive pressure to the cutter lever.
- Do not try to print if the cassette is empty; it will damage the print head.
- Do not pull the tape while printing or feeding; it will damage the tape and machine.
- Any data stored in memory will be lost due to failure or repair of the P-touch, or if the battery expires and no adapter is connected.
- When power is disconnected for more than three minutes, all text settings and any text files stored in the memory will be cleared.

TZe
TAPE

P-touch

1290

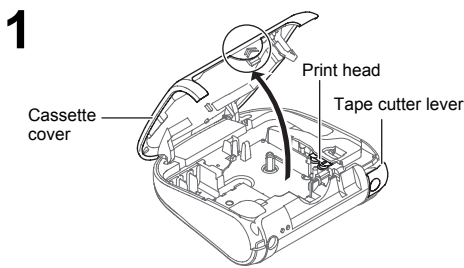
User's Guide

English

Printed in China
LAD177001

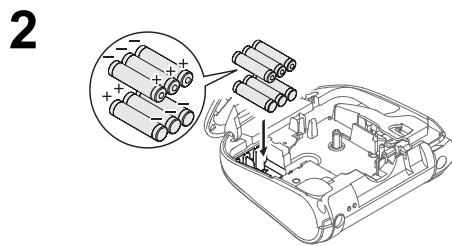


Power Supply and Tape Cassette

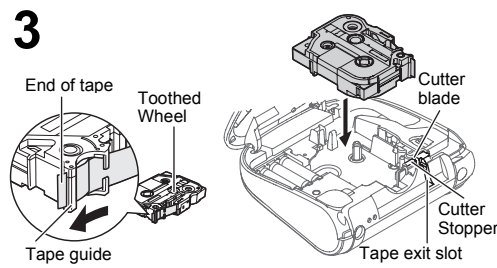


1 Open the cassette cover by pressing the indicated area at the back of the machine. If a tape cassette is already installed, remove it by pulling it straight up. Also, if batteries are already installed, remove them.

- Make sure that the power is turned off when replacing batteries or tape cassettes.

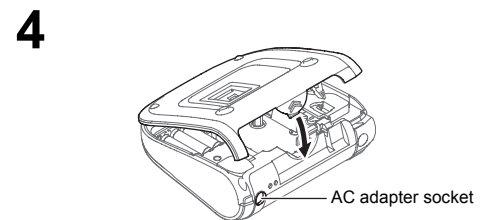


2 Insert six new AAA alkaline batteries (LR03), making sure that their poles point in the correct directions. Always replace all six batteries at the same time using brand new ones of the same type.



3 Insert a tape cassette, making sure that it snaps into place.

- Make sure that the end of the tape feeds under the tape guides.
- If the ink ribbon is loose, use your finger to wind the toothed wheel in the direction of the arrow on the cassette.
- Use Brother TZe tapes with this machine.



4 Securely close the cassette cover, making sure that it snaps into place.

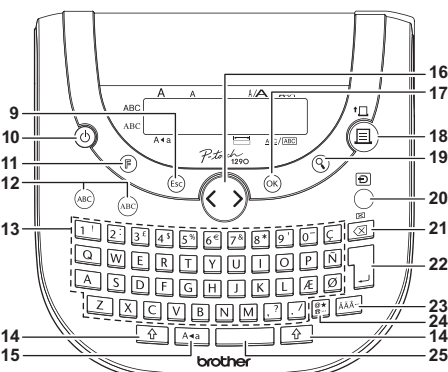
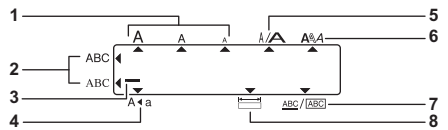
After you have installed the tape, press + to feed the tape once and then push in the tape cutter lever to cut the tape.

NOTE

When using optional AC adapter (AD-24ES)

1. Insert the small plug on the adapter cord into the AC adapter socket on the top end of the machine.
 2. Insert the power plug into the nearest standard electrical outlet.
- For memory back up, we recommend using AAA alkaline batteries (LR03) together when using the AC adapter.

LCD Display & Keyboard



1. Size
2. Font
3. Cursor
4. Caps
5. Width
6. Style
7. Underline/Frame
8. Label Length
9. Escape key
10. Power key
11. Function key
12. Font keys
13. Character keys
14. Shift key
15. Caps key
16. Cursor key (Use with Shift key to go to start/end of the text.)
17. OK key
18. Print/Feed key
19. Preview key
20. DECO MODE key
21. Backspace key
22. Enter key
23. Accent key
24. Symbol key
25. Space key

NOTE

The LCD shows one row of 15 characters; however, the text that you enter can be up to 80 characters in length.

Initial Settings

- 1 Start your machine.**
Supply power by using six AAA alkaline batteries (LR03) or the optional AC adapter, and then press .
- 2 Set the language.**
The default setting is [English].
 [English/Español/Français/Hrvatski/Italiano/Magyar/Nederlands/Norsk/Polski/Português/Română/Slovenski/Slovenský/Suomi/Svenska/Türkçe/Česky/Dansk/Deutsch]
- 3 Set the unit of measurement.**
The default setting is [mm].
 [mm/inch]

NOTE

- The machine automatically turns off if no keys are pressed within five minutes.
- To cancel operations, press .

Troubleshooting

Error message

Message	Cause/Remedy
Battery Weak!	The batteries are weak. Replace them with new ones.
Check Battery!	The installed batteries are running low.
Invalid!	<ul style="list-style-type: none"> • There is no text above the cursor when you selected [Numbering]. • Invalid character is selected for [Numbering]. • Invalid number is selected for [Tab Length] or [Label Length].
No Text!	<ul style="list-style-type: none"> • You tried to print a text file when there is no data stored in the memory. • is pressed when no text is entered. • You tried to select [Copies], [Numbering], [Mirror], or Text Preview when no text is entered.
Line Limit!	<ul style="list-style-type: none"> • You tried to enter a 3rd line by pressing . • You tried to print a 2 line text with 3.5mm or 6mm tape installed.
No Cassette!	You tried to print a label with no cassette installed.
Cutter Error!	The tape cutter lever was used while printing.

Message	Cause/Remedy
Full!	The maximum number of characters (80 characters, for DECO MODE 50 characters) have already been entered.
Text Too Long!	The text length exceeds the selected label length, Auto Format setting length and DECO MODE setting length.
No Frame OK?	Printing on 3.5mm tape with invalid Frame setting ON. (Select to print with no Frame, to cancel.)
OK to Feed?	Feeding tape after printing when [Chain print] is selected. Refer to "Setting Margin".
Cooling	If the print head becomes too hot, your machine will stop printing and automatically start to cool down. The cool down time will be displayed. Once the print head is cool, printing will automatically continue. Do not touch the P-touch while cooling.
Insert 12mm!	12mm tape is required for DECO MODE.

What to do when...

Problem	Solution
The display stays blank after turning on the machine.	<ul style="list-style-type: none"> • Check that the batteries are correctly inserted. • If the batteries are weak, replace them. • Check that the optional AD-24ES adapter is correctly connected.
When the label is printed out, there is too much margin (space) on both sides of the text.	• See "Setting Margin" and select [Half] or [Narrow] to have smaller margins for your label.
The machine does not print, or the printed characters are not formed properly.	<ul style="list-style-type: none"> • Check that the tape cassette has been inserted correctly. • If the tape cassette is empty, replace it. • Check the cassette cover is properly closed.
The settings and texts have cleared on their own.	<ul style="list-style-type: none"> • The batteries may be weak. Replace them. • When power is disconnected for more than three minutes, all texts, settings and any text files stored in the memory will be cleared.
A blank horizontal line appears through the printed label.	• There maybe some dust on the print head. Remove the tape cassette and use a dry cotton swab to gently wipe the print head with an up-and-down motion.

Problem	Solution
The machine has "locked up" (i.e., nothing happens when a key is pressed, even though the machine is on.)	• Refer to "Resetting the P-touch".
The power turns off when you try to print.	<ul style="list-style-type: none"> • The batteries may be weak. Replace them. • Check that the batteries are correctly inserted.
The tape does not feed properly or the tape gets stuck inside the machine.	<ul style="list-style-type: none"> • Check that the end of the tape feeds under the tape guides. • The tape cutter lever was used while printing. Do not touch the cutter lever during printing.
How can I delete all text and format settings to create a new label?	• Press + and select [Text&Format].
How can I change the language setting?	• Refer to "Initial Settings".

Entering Text

▶ Setting Font



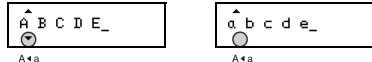
Label image (Helsinki) Label image (Bohemia)



▶ Switching Upper Case/Lower Case



Upper case (A+a) ON Lower case (A+a) OFF

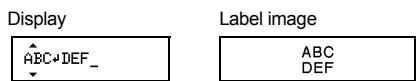


▶ Entering Two Lines of Text

Move the cursor to where the second line starts and press



Use either 9mm or 12mm wide tape for two line text.



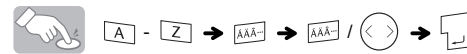
▶ Entering Symbols

Choose a symbol with and

press

- Refer to the table of symbols (A) on the enclosed insertion sheet for a list of available symbols.
- To go to the next group, press
- To cancel operations, press

▶ Entering Accented Characters



Refer to the table of accented characters (B) on the enclosed insertion sheet for a list of available accented characters.

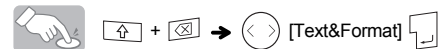
- To cancel operations, press
- The order of accented characters differs by the selected LCD language.

▶ To Clear

By pressing, the letters will be deleted one by one.



To delete all text and settings :



To delete text only :



Printing Labels

▶ Text Preview

You can preview the text before printing.

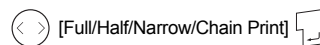


- The LCD shows the whole text and the label length (mm/inch), then returns to the original text.
- Only the text can be previewed, not the font, style, size, underline/frame or any additional features.

▶ Feeding (Tape Feed)

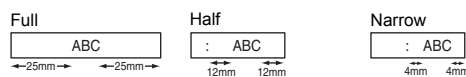


▶ Setting Margin (+)



[Full]/[Half]/[Narrow]

For leaving equal margins on both sides of the text.

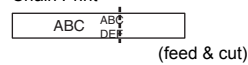


[Chain Print]

For creating a label containing text in various styles.

- Enter text.
- Press, then [OK to Feed?] appears.
- Press to enter more text. Press to feed and print.

Chain Print



NOTE

- When [Half] or [Narrow] is set, feed the tape before using the cutter otherwise a part of the text may be cut off. Also, cut along the printed dots (·) with scissors so the text is centered in the label.
- To print more than 1 copy of a label with minimum margin, set the margin to [Narrow] and select [Copies] in the [Print Options] menu.
- Do not try to pull the tape since this may damage the tape cassette.

▶ Printing



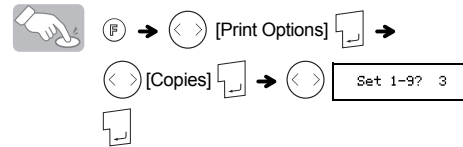
- To prevent damage to the tape, do not touch the cutter lever while the message "Print" or "Feed" is displayed.
- To cut off the label, push in the tape cutter lever on the upper-right corner of the machine.
- Peel the printed label from backing and apply the label.

▶ Using Print Options (+)

[Copies]

You can print up to 9 copies of each label.

- To print more than 1 copy of a label with minimum margin, set the margin to [Narrow] and select [Copies] for [Print Options] function.

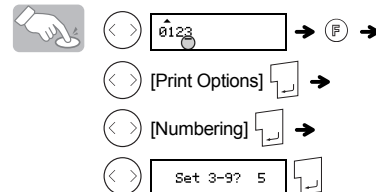


- You can also select the number of copies by entering it with the Number keys.

[Numbering]

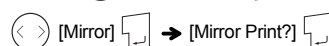
You can print many copies of the same text while increasing a selected number by 1 after each label is printed.

Example: To print copies of a label containing a serial number (0123, 0124 and 0125)



- Select the highest number you wish to be printed when setting the number.

[Mirror]



- Use clear tape with [Mirror], so the labels can be read correctly from the opposite side when attached on glass, windows or other transparent surfaces.

Resetting the P-touch

You can reset the P-touch when you want to initialize the settings, or in the event the P-touch is not working properly.

- Turn off the P-touch and then while holding down and R, press to turn the P-touch back on.

- Release and R. The P-touch turns on with the internal memory reset.

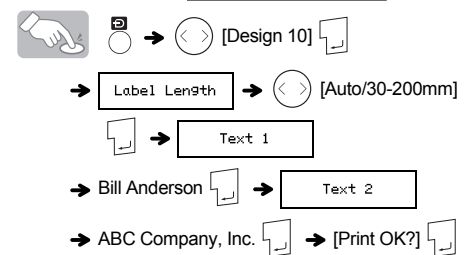
NOTE

All text, settings and stored files are cleared.

DECO MODE

This function allows you to create unique labels by using some built-in templates. Refer to the DECO MODE format table (C) on the enclosed insertion sheet.

Example: Design 10 Bill Anderson



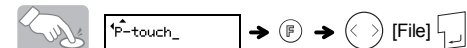
NOTE

- The formats marked in column [C] of the insertion sheet's DECO format table can require cooling. If the print head becomes too hot, your machine will automatically stop printing and begin to cool down. Once the print head has cooled, printing will automatically continue. Do not touch the P-touch while cooling.
- If you select a format that is one line (Design 1 - Design 9), only enter the text once.
- Printing and formatting of entered text may depend on the template style you have selected.
- The format of DECO MODE templates cannot be changed.
- The highlighted symbols in the table of symbols (A) on the enclosed insertion sheet are available in DECO MODE.
- To clear all text, press and, then "Clear?" appears. Press to clear. Press to cancel.
- When you access DECO MODE, your most recently printed DECO MODE text and label length will be recalled.
- Press to return to the previous step.
- To exit DECO MODE, press until the display shows the text entry screen.
- DECO MODE feature is only available when using 12mm wide tape cassettes.
- The maximum label length is 200mm for DECO MODE.
- When [Auto] is selected for "Label Length", the label will automatically adjust to the correct size for printing the text one time.
- Press to return to the [Auto] setting for "Label Length" mode.

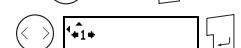
Saving Label Files

▶ Memory (+)

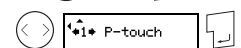
You can save your original labels on to your machine. Up to nine labels can be saved and recalled for printing at a later date. You can also edit and overwrite the stored label.



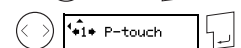
To Save: → [Save] →



To Print: → [Print] →



To Open: → [Open] →



NOTE

If you try to store a label when there is already a label stored to that number, the message "Overwrite?" will appear. Press to save your new label. Press to cancel.

Specifications

Dimensions: (W x D x H)	Approx. 159 x 157 x 61.7mm
Weight:	Approx. 485 g (without batteries and tape cassette)
Power supply:	Six AAA alkaline batteries (LR03) Optional AC adapter (AD-24ES)
Tape cassette:	Brother TZe tape (width) 3.5mm, 6mm, 9mm, 12mm TZe tape is also supported.

Accessories

Tape Cassettes:	See the included "Tape Catalog".
AC Adapter:	AD-24ES
Cutter Unit:	TC-5 (replacement)

If the cutter blade becomes blunt after repetitive use and the tape cannot be cut cleanly, replace with a new cutter unit (stock no. TC-5) from an authorized Brother reseller.

CAUTION

- Do not touch the cutter blade directly with your fingers.
- Do not swallow the cutter stopper.

Contact Information

Contact may differ by country.
See the Web <http://www.brother.eu/>

Designing Labels

- Press, use to select a function under column [A], and then press. (The function can also be selected with the shortcut keys listed under column [C]. (+ 1 to 8))

- Use to select a setting listed under column [B], and then press.

Design	[A]	[B]	Label image	[C]
Size	Size	Large* ¹	J.SMITH	1 !
		Medium	J.SMITH	
		Small	J.SMITH	
Width	Width	Normal* ¹	J.SMITH	2 :
		x 2	J.SMITH	
		x 1/2	J.SMITH	
Style	Style	Normal* ¹	J.SMITH	3 €
		Bold	J.SMITH	
		Outline	J.SMITH	
		Shadow	J.SMITH	
		Italic	J. SMITH	
		Italic Bold	J. SMITH	
		Italic Outl (Italic Outline)	J. SMITH	
		Italic Shadow	J. SMITH	
		Vertical	∩ ∙ ∞ ∑ - ∓ ∓	
		Underline/Frame* ²	Underline/Frame	
Underline	ABC			
Round	ABC			
Leaf	ABC			
Tile	ABC			
Star	ABC			
Heart	ABC			
Square	ABC			
Clip	ABC			
Tab	Tab			The cursor should be positioned where you set a tab.
Tab length	Tab Length	Auto* ¹ / 0-100mm ³	The tab is set with the specified length.	6 €
Label length	Label Length	Auto* ¹ / 30-300mm ³	The label is printed with the specified length.	7 &
Auto format	Auto Format	Off* ¹	—	8 *
		VHS Spine	140mm	
		MiniDV Spine	42mm	
		Audio Tape	89mm	
		CD Case Spine	113mm	
		File Tab	82mm	
		Divider Tab	42mm	

*¹ These are the default settings. To return to the default setting, press.

*² Frames can not be printed on 3.5mm tapes.

*³ You can also select the length by entering the length with the number keys. To turn to [Auto], press.