

Introduction

With your PT-90, you can create labels for any application. Select from the many frames, character sizes and styles to design beautiful custom labels. In addition, the variety of tape cartridges available allows you to print labels with different widths and exciting colours.

Read this manual carefully before starting and keep the manual in a handy place for future reference. The contents of this guide and the specifications of this product are subject to change without notice.

Declaration of Conformity (Europe/Turkey only)

We, Brother Industries, Ltd.
15-1, Naeshiro-cho, Mizuho-ku,
Nagoya 467-8561 Japan
declare that this product and AC adapter are in conformity with the essential requirements of all relevant directives and regulations applied within the European Community.
The Declaration of Conformity (DoC) can be downloaded from our website. Visit support.brother.com and:
• select "Europe"
• select your country
• select "Manuals"
• select your model
• select "Declaration of Conformity"
• click "Download"
Your Declaration will be downloaded as a PDF file.

Safety Precautions

Warning

Follow these guidelines to avoid the risk of fire, burn, injury, electric shock, damage, overheating, abnormal odours or smoking.

- Always use the specified voltage and the suggested AC adapter (AD-24ES) for this machine to prevent any damage or failure.
- Unplug the adapter cord immediately and stop using the P-touch during an electrical storm.
- Do not use the machine/AC adapter in places of high humidity such as bathrooms.
- Do not overload the adapter cord.
- Do not place heavy objects on, or damage the adapter cord or plug. Do not forcibly bend or pull the adapter cord. When disconnecting the adapter cord from the power outlet, always hold the plug.
- Make sure that the plug is fully inserted in the power outlet. Do not use an outlet that is loose.
- Do not swallow the cutter stopper.
- Do not get the machine/AC adapter/adapter plug wet, such as by handling them with wet hands or spilling liquids on to them.
- Do not disassemble or modify the P-touch/AC adapter/batteries.
- Do not use metallic objects, such as tweezers or a metallic pen, when changing the batteries.
- Do not throw the batteries into fire or expose to heat.
- Disconnect the AC adapter, remove batteries immediately and stop using the machine if you notice abnormal odour, heat, discoloration, deformation or anything unusual while using or storing it.

Caution

Follow these guidelines to avoid personal injury, battery leakage, burn and heat.

- Do not touch the cutter blade near the print head.
- Remove the batteries and disconnect the AC adapter if you do not intend to use the P-touch for an extended period of time.
- Do not use old and new batteries together or mix alkaline batteries with other type batteries, or set the positive and negative end in the wrong position.

General Precautions

- Depending on the location, material, and environmental conditions, the label may peel or become irremovable, the colour of the label may change or be transferred to other objects. Before applying the label, check the environmental condition and the material.
- Do not use the P-touch in any way or for any purpose not described in this guide. Doing so may result in accidents or damage to the machine.
- Use only Brother M tapes with this machine. Do not use tapes that do not have the mark.
- Only use a soft, dry cloth to clean the machine; never use alcohol or other organic solvents.
- Use a cotton swab to clean the print head; never touch the print head.
- Do not put any foreign objects into the tape exit slot or AC adapter connector, etc.
- Do not place the P-touch/battery/adapter in direct sunlight or rain, near heaters or other hot appliances, in any location exposed to extremely high or low temperatures (e.g. on the dashboard or in the back of your car), high humidity, or dusty locations.
- Do not apply excessive pressure to the cutter lever.
- Do not try to print if the cassette is empty; it will damage the print head.
- Do not pull the tape while printing or feeding; it will damage the tape and machine.
- When power is disconnected for more than three minutes, all text settings and any text files stored in the memory will be cleared.
- Any data stored in memory will be lost due to failure or repair of the P-touch, or if the battery expires and no adapter is connected.

M
TAPE

P-touch

90

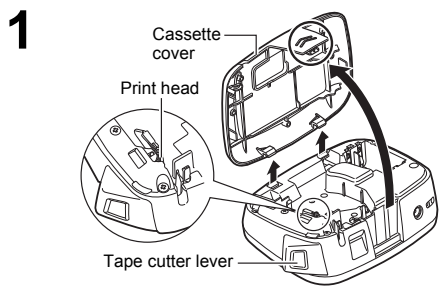
User's Guide

English



Printed in China
D00FRZ001

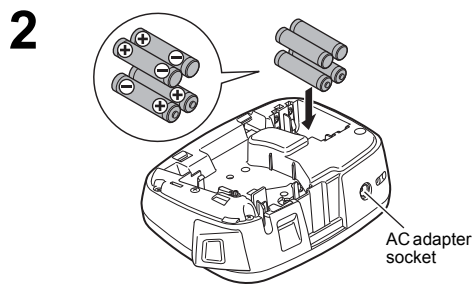
Power Supply and Tape Cassette



1 Remove the cassette cover by pressing the above indicated area.

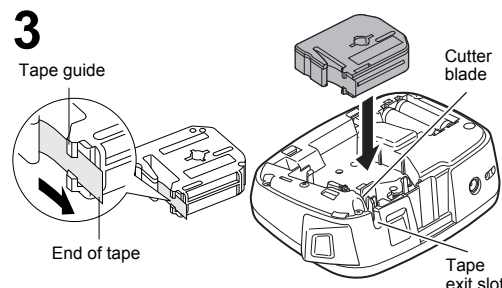
If a tape cassette is already installed, remove it by pulling it straight up. Also, if batteries are already installed, remove them.

- Make sure that the power is turned off when replacing batteries or tape cassettes.



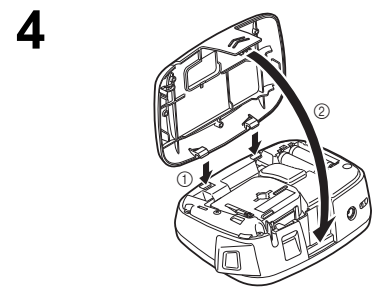
2 Insert four new AAA alkaline batteries (LR03), making sure that their poles point in the correct directions.

- Always replace all four batteries at the same time using brand new ones.
- For using optional AC adapter (AD-24ES), refer to "Using Optional AC Adapter".



3 Insert a tape cassette, making sure that it snaps into place.

- Make sure that the end of the tape feeds under the tape guide.
- Use only Brother M tapes with this machine.

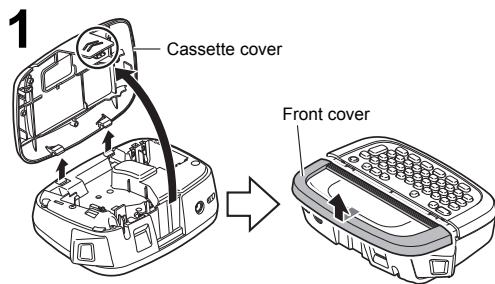


4 Insert the two hooks at the bottom of the cassette cover into the slots on the machine (1), and then close the cover securely until it snaps into place (2).

After you have installed the tape, feed the tape (see "Feeding") once and then push in the tape cutter lever to cut the tape.

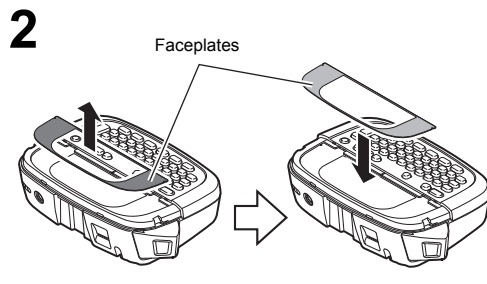
Changeable Faceplates

The PT-90 comes with a variety of different faceplates - enabling users to customize the machine. To change the faceplates, follow the steps below.



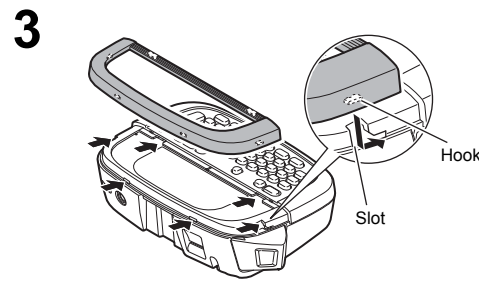
1 Remove the cassette cover by pressing the above indicated area. Slide the front cover back and lift up from machine.

- Make sure that the power is turned off when replacing the faceplate.

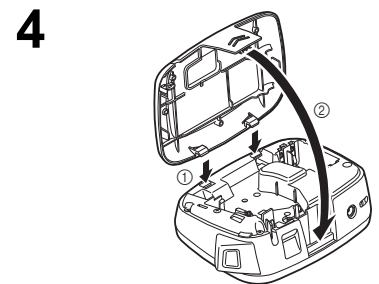


2 Remove the inserted faceplate, and then replace it with another one.

- Be sure to remove the protective film from the front side of the faceplate before replacing.
- Do not insert more than one faceplate at a time. This can damage the faceplates and cause the front cover to fit incorrectly.

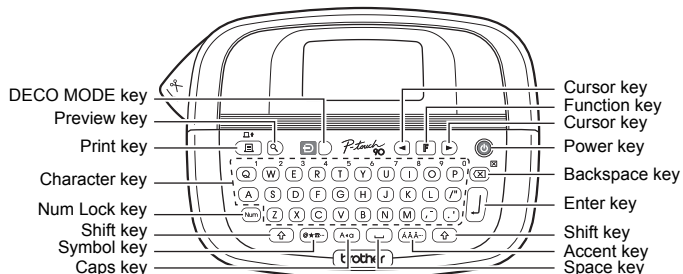
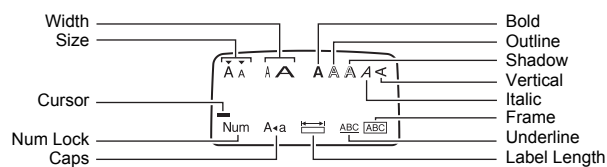


3 Insert the hooks on the front cover into the slots on the machine, and slide the cover back into place.



4 Insert the two hooks at the bottom of the cassette cover into the slots on the machine (1), and then close the cover securely until it snaps into place (2).

LCD Display & Keyboard



NOTE

The LCD shows one row of 12 characters; however, you can enter up to 80 characters in length.

Initial Settings

1 Start your machine.

Supply power by using four AAA alkaline batteries (LR03) or the optional AC adapter, and then press .

2 Set the language.

The default setting is [English].

[Language]
 [English/Español/Français/
 Italiano/Nederlands/Norsk/Português/
 Svenska/Dansk/Deutsch]

- You can also display [Language] by pressing and .

3 Set the unit of measurement.

The default setting is [mm].

[Unit]
 [mm/inch]

- You can also display [Unit] by pressing and .

NOTE

- The machine automatically turns off if no keys are pressed within five minutes.
- To cancel operations, press .
- To initialize the P-touch back to factory settings, see "Resetting the P-touch".

Troubleshooting

Error messages

Message	Cause/Remedy
Low Battery!	The batteries are weak. Replace them with new ones.
Full!	The maximum number of characters (80 characters for regular text, or 50 characters for DECO MODE) have already been entered.
No Text!	<ul style="list-style-type: none"> • You tried to print a text file when there was no data stored in the memory. • was pressed when no text was entered. • was pressed when no text was entered. • You tried to select [Copies] when no text was entered. • was pressed when no text was entered in the text entry screen of DECO MODE.

Message	Cause/Remedy
Line Limit!	• You tried to enter a 3rd line by pressing (Maximum printable lines is 2).
Invalid!	Invalid number is selected for [Label Length].
Text Limit!	<ul style="list-style-type: none"> • The text length exceeds the selected label length. • The text length exceeds 200mm when [Label Length] is set to [Auto] in DECO MODE. • If the minimum label length (30mm) is selected, some frame types (Leaf or Star) will not allow you to enter additional text.
Cooling XXX	If the print head becomes too hot, your machine will stop printing and automatically start to cool down. The cool down time will be displayed. Once the print head is cool, printing will automatically continue. Do not touch the P-touch while cooling.

What to do when...

Problem	Solution
The display stays blank after you have turned on the machine.	<ul style="list-style-type: none"> • Check that the batteries are correctly inserted. • If the batteries are weak, replace them.
The machine does not print, or the printed characters are not formed properly.	<ul style="list-style-type: none"> • Check that the tape cassette has been inserted correctly. • If the tape cassette is empty, replace it. • Check the cassette cover is properly closed. • The batteries may be weak. Replace them. • When power is disconnected for more than three minutes, all texts, settings and any text files stored in the memory will be cleared. Language and Unit settings will also be cleared.
The settings and texts have cleared on their own.	When power is disconnected for more than three minutes, all texts, settings and any text files stored in the memory will be cleared. Language and Unit settings will also be cleared.
A blank horizontal line appears through the printed label.	There may be some dust on the print head. Remove the tape cassette and use a dry cotton swab to gently wipe the print head with an up-and-down motion.

Problem	Solution
The machine has "locked up" (i.e., nothing happens when a key is pressed, even though the machine is on.)	Refer to "Resetting the P-touch".
The power turns off when you try to print.	<ul style="list-style-type: none"> • The batteries may be weak. Replace them. • Check that the batteries are correctly inserted.
The tape does not feed properly or the tape gets stuck inside the machine.	<ul style="list-style-type: none"> • Check that the end of the tape feeds under the tape guides. • The cutter lever is used while printing. Do not touch the cutter lever during printing.
All text and format settings need to be cleared to create a new label.	Press while holding down , or go into Function mode and select .
To change language setting	Refer to "Initial Settings".

Entering Text and Symbols

Switching Upper Case/Lower Case

Upper case (A+ ON) Lower case (A+ OFF)

Entering Numbers

Num Lock ON Num Lock OFF

Making a Two Line Label

- Enter the text for the first line and press [J].
 - Enter the text for the second line and press [E].
- Do not press [J] after the second line; otherwise the "Line Limit" error message will appear.
 - Use either 9mm or 12mm wide tape for two line text.

Display Label image

Entering Symbols

Example: Entering ☎

Display Label image

- Pictographs are displayed on the LCD display with the corresponding alphabet and number of the Pictograph table. For the Pictograph table and Pictograph List, refer to "Symbols".

Entering Accented Characters

Accented Characters	Accented Characters
A Á Â Ã Ä Å Æ Æ Æ Æ Æ	a á â ã ä å æ å å å å
C Ç Ç Ç	c ç ç ç
D Đ Đ	d đ đ đ
E É Ê Ë Ì Í Î Ï	e é ê ë ì í î ï
G Ğ Ğ	g ğ ğ
I Ì Í Î Ï	i ì í î ï
K Ķ Ķ	k ķ ķ
L Ł Ł Ł	l ł ł ł
N Ñ Ñ Ñ	n ñ ñ ñ
O Ó Ô Õ Ö Ø Ç Ö	o ó ô õ ö ø ç ö ö
R Ř Ř Ř	r ř ř ř
S Ś Ś Ś Ś	s ś ś ś
T Ŧ Ŧ	t ŧ ŧ
U Ú Û Ü Ü Ü Ü	u ú û ü ü ü ü
Y Ÿ Ÿ	y ÿ ÿ
Z Ž Ž Ž	z ž ž ž

- To cancel operations, press [X].
- The order of accented characters differs by the selected LCD language.

To Clear (F + Y)

By pressing [X], the letters will be deleted one by one.

To delete all text and settings : [F] + [X] → [A7] [Ttxt&Format]

To delete text only : [F] + [X] → [A7] [Text Only]

Printing Labels

Text Preview

You can preview the text before printing.

- The LCD shows the whole text and the label length (mm/ inch), then returns to the original text.
- Only the text can be previewed, not the style, size, underline/frame or any additional features.

Feeding (Tape Feed)

The machine will feed 25mm of tape, which may be needed when installing a new tape cassette.

Printing

- To prevent damage to the tape, do not touch the cutter lever while the message "Printing..." or "Feeding..." is displayed.
- To cut off the label, push in the tape cutter lever on the upper-left corner of the machine.
- Peel the printed label from backing and apply the label.

Making Copies (F + E)

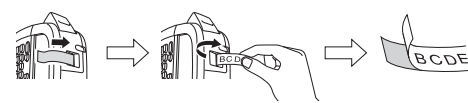
You can print up to 9 copies of each label.

- You can also select the number of copies by entering with the Number Keys [0]~[9].

Removing the Label Backing

This machine is equipped with a peeler that allows you to easily remove the backing from labels.

- Insert the label, with the printed surface facing down, as far as possible into the built-in peeler.
- Fold back the label to the right and quickly pull out the label. The end of the backing is separated from the label.



Resetting the P-touch

You can reset the P-touch when you want to initialize the settings, or in the event that the P-touch is not working properly.

- Press [P] to turn off the power.
- While holding down [F] and [R], press [P] to turn on the power.
- Release [P], and then release [F] and [R]. The internal memory is reset, and all text, settings and stored files are cleared.

DECO MODE

This function allows you to create unique labels by using some built-in templates. You can choose from 8 types of templates.

Design	Label Image	Cooling
1	ABC ABC ABC ABC	
2	ABC ABC ABC ABC	
3	ABC ABC ABC ABC ABC ABC ABC ABC	
4	ABC ABC ABC ABC ABC ABC ABC ABC	
5	ABC ABC ABC ABC ABC ABC ABC ABC	
6	ABC ABC ABC ABC ABC ABC ABC ABC	✓
7	ABC ABC ABC ABC ABC ABC ABC ABC	✓
8	ABC ABC ABC ABC ABC ABC ABC ABC	✓

Example: Design 8

Label Length → [Auto/ 30-200mm] → [Print]

NOTE

- Some Deco Mode formats may require cooling (indicated on the above table). If the print head becomes too hot, your machine will stop printing and automatically start to cool down. The cool down time will be displayed. Once the print head is cool, printing will automatically continue. Do not touch the P-touch while cooling.
- Only one line of text can be entered in DECO MODE.
- Depending on the selected format, the entire text entered may not be printed.
- The formats of the DECO MODE templates cannot be changed.
- Symbols surrounded by a box in the Basic table are available in DECO MODE. For the Basic table, refer to "Symbols".
- To clear all the entered text, press [F] and [X]. "Clear?" is displayed. Press [J] to clear the text, or [X] to cancel this operation.
- When you access DECO MODE, your most recently printed DECO MODE text and label length will be recalled.
- Press [X] to return to the previous step.
- To exit DECO MODE, press [X] until the display returns to the text entry screen. You can also exit this mode by pressing [A7] when [Print] is displayed, and selecting [Quit].
- 12mm wide tape cassettes are recommended when using the DECO MODE feature.
- The maximum label length is 200mm for DECO MODE.
- When [Auto] is selected for [Label Length], the label will automatically adjust to the correct length for printing the text one time.
- Press [A7] to return to [Auto] for [Label Length] mode.

Saving Label Files

Memory (F + U)

You can save your original labels on to your machine. Up to three labels can be saved and recalled for printing at a later time. You can also edit and overwrite the stored label.

To Save: [F] → [U] → [File]

To Print: [F] → [Print]

To Open: [F] → [Open]

NOTE

If you try to store a label when there is already a label stored to that number, a message "Overwrite?" will appear. Press [J] to save your new label. Press [X] to cancel.

Symbols

The following symbols are available.

Basic
01 . , : ; " ' °
02 @ - & ~ _ \ /
03 # % ? ! ¡ ¢ £ ¤
04 + - × ÷ ± = ✓
05 () [] < > \$
06 → ← ↑ ↓ ® © ™
07 \$ ¢ € £ ¥ °
08 α β γ δ μ Ω
09 0 1 2 3 4 5 6
10 7 8 9 0 1 2 3
11 4 5 6 7 8 9
12 ● ○ ■ □ ☆ ★ ♣
13 ♠ ♥ ♦ ♣

Pictograph

	1	2	3	4	5	6	7
A	☎	☎	☎	☎	☎	☎	☎
B	☎	☎	☎	☎	☎	☎	☎
C	☎	☎	☎	☎	☎	☎	☎
D	☎	☎	☎	☎	☎	☎	☎
E	☎	☎	☎	☎	☎	☎	☎
F	☎	☎	☎	☎	☎	☎	☎
G	☎	☎	☎	☎	☎	☎	☎
H	☎	☎	☎	☎	☎	☎	☎
I	☎	☎	☎	☎	☎	☎	☎
J	☎	☎	☎	☎	☎	☎	☎
K	☎	☎	☎	☎	☎	☎	☎
L	☎	☎	☎	☎	☎	☎	☎

- To display the next group, press [P].
- To cancel operations, press [X].
- Symbols surrounded by a box in the Basic table are available in DECO MODE.
- The rows of symbols (A to L) in the Pictograph table can be selected by pressing the corresponding character.

Printing the Pictograph List

Label image

Using Optional AC Adapter

- Insert the small plug on the adapter cord into the AC adapter socket on the top end of the machine.
- Insert the power plug into the nearest standard electrical outlet.

NOTE

For memory back up, we recommend using AAA alkaline batteries (LR03) together when using the AC adapter.

Specifications

Dimensions: (W × D × H)	Approx. 156 × 111 × 56.5mm
Weight:	Approx. 255 g (without batteries and tape cassette)
Power supply:	Four AAA alkaline batteries (LR03) Optional AC adapter (AD-24ES)
Tape cassette:	Brother M tape (width) : 9mm, 12mm

Contact Information

Contact may differ by country. See the website www.brother.eu/

Designing Labels

- Press [F], use [A] to select a function under column [A], and then press [J]. (The function can also be selected with the shortcut keys listed under column [C]. ([F] + [Q] to [T]))
- Use [B] to select a setting listed under column [B], and then press [J].

Design	[A]	[B]	Label image	[C]
Size	Size	Large* ¹	J.SMITH	[F] + [Q]
		Small	J.SMITH	
Width	Width	Normal* ¹	J.SMITH	[F] + [W]
		×2	J.SMITH	
		×1/2	J.SMITH	
Style	Style	Normal* ¹	J.SMITH	[F] + [E]
		Bold	J.SMITH	
		Outline	J.SMITH	
		Shadow	J.SMITH	
		Italic	J.SMITH	
		Italic Bold	J.SMITH	
		Italic Outline	J.SMITH	
		Italic Shadow	J.SMITH	
		Vertical	J.SMITH	
Underline/Frame	Undl/Frame	Off* ¹	ABC	[F] + [R]
		Underline	ABC	
		Round	ABC	
		Leaf	ABC	
		Tile	ABC	
		Star	ABC	
		Heart	ABC	
		Square	ABC	
		Bubble	ABC	
Label length	Label Length	Auto* ¹ /30mm - 300mm* ²	The label is printed with the specified length.	[F] + [T]

*¹ Default setting. To return to the default setting, press [A7].

*² You can select the length by entering the length with the Number Keys [0]~[9]. To return to [Auto], press [A7].