

# brother®

## MPrint-series Mobile Printer

# Software User's Guide

Introduction

Creating Designs

Appendix

The contents of this guide and the specifications of this product are subject to change without notice. Brother reserves the right to make changes without notice in the specifications and materials contained herein and shall not be responsible for any damages (including consequential) caused by reliance on the materials presented, including but not limited to typographical and other errors relating to the publications. The screen images in this guide may differ depending on your OS or printer.

Version 0

# Contents

|                                                                    |           |
|--------------------------------------------------------------------|-----------|
| <b>Contents</b> .....                                              | <b>2</b>  |
| <b>Introduction</b> .....                                          | <b>3</b>  |
| Trademarks .....                                                   | 3         |
| About this Guide .....                                             | 3         |
| Symbols used in this Guide .....                                   | 3         |
| <b>Creating Designs</b> .....                                      | <b>4</b>  |
| How to use P-touch Editor for Windows® .....                       | 4         |
| Starting P-touch Editor .....                                      | 4         |
| Start P-touch Editor Help .....                                    | 9         |
| How to use Brother Mobile Printing Software (Brother MPrint) ..... | 11        |
| Printing .....                                                     | 11        |
| Changing Printer Settings .....                                    | 20        |
| Changing the settings .....                                        | 20        |
| <b>Appendix</b> .....                                              | <b>23</b> |
| Printing directly from other applications .....                    | 23        |
| Setting the Printer Driver .....                                   | 23        |
| Printing from other applications .....                             | 24        |

The Brother mobile printer (hereafter referred to as "the machine") enables you to quickly and easily print custom designs created with the software, P-touch Editor.

## ▶ Trademarks

The Brother logo is a registered trademark of Brother Industries, Ltd.

Brother is a registered trademark of Brother Industries, Ltd.

© 2009 Brother Industries, Ltd. All rights reserved.

Microsoft, Windows, Windows Mobile and Windows Vista are registered trademarks of Microsoft Corporation in the United States and other countries.

The Bluetooth word mark and logos are owned by the Bluetooth SIG, Inc. and any use of such marks by Brother Industries, Ltd. under license.

BarStar Pro Encode Library (PDF417) Copyright © 2007 AINIX Corporation. All rights reserved.

QR Code is registered trademark of DENSO WAVE INCORPORATED in JAPAN and other countries.

Portion of graphics filter software are based in part on the work of Group 42, Inc.

Portion of graphics filter software are based in part on the work of the Independent JPEG group.

VS-FlexGrid Pro Copyright © 2002 VideoSoft Corporation.

The names of other software or products used in this document are trademarks or registered trademarks of the respective companies that developed them.


Each company whose software title is mentioned in this guide has a Software License Agreement specific to its proprietary programs.

All other brand and product names mentioned in this Software User's Guide are registered trademarks of their respective companies.

## ▶ About this Guide

This guide (PDF) is included on the CD-ROM.



In this guide, when the mouse pointer changes to  you can just click to jump to the corresponding pages. For the basic functions of Adobe® Reader®, see the Adobe® Reader® Help files.

## ▶ Symbols used in this Guide

The symbols used throughout this guide are as follows:



This symbol shows information or directions that should be followed. Ignoring them may result in injury, damage, or failed operations.



This symbol shows information or directions that can help you better understand and use the machine more efficiently.

# Creating Designs

## How to use P-touch Editor for Windows®

This section explains the procedure for starting P-touch Editor. With P-touch Editor, you can create various kinds of designs.

See the P-touch Editor Help for samples of various kinds of designs and details on creating, printing, and saving the designs. The following is the example for Windows Vista®. Read the printer name in each image as your purchased machine model name.

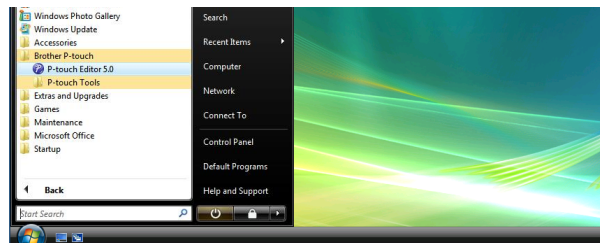
### ▶ Starting P-touch Editor

#### 1 Click [Start]-[All Programs (Programs)]- [Brother P-touch]-[P-touch Editor 5.0].



You can also start P-touch Editor using the following methods (only if you created the shortcut during installation):

- Double-click the shortcut icon on the desktop.
- Click the shortcut icon on the Quick Launch bar.



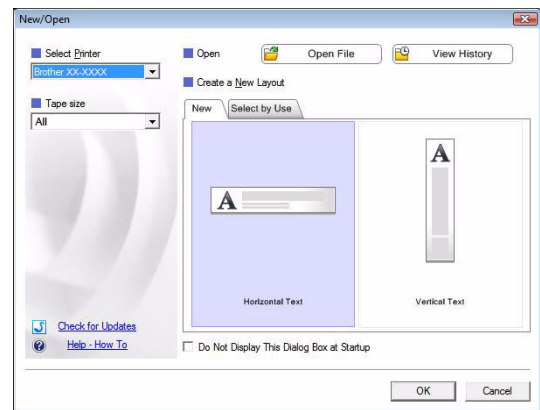
When P-touch Editor is launched, the [New/Open] dialog box appears, allowing you to choose whether you want to create a new layout or open an existing design.



To specify how the P-touch Editor works when it starts, click [Tools]-[Options] of the menu bar on the P-touch Editor to display the [Options] dialog box. In the [General] tab, you can choose the setting in the [Operations] list box in the [Startup Settings]. Normally, choose [Display New/Open Dialog Box].

## 2 Choose an option in the [New/Open] dialog box and click .

- You can choose the printer and media size.
- When you choose [Open File], the [Open] dialog box appears. You can choose and open the file you have created and stored previously.
- When you choose [View History], the [History] dialog appears. You can choose from recently created designs.
- When you choose [New], choose either vertical writing style or horizontal writing style.
- When you choose [Select by Use], you can choose by applications.
- When you choose [Help-How To], the P-touch Editor Help appears.  
The Help files allow you to learn step by step how to create a layout.
- When you choose [Check for Updates] with a computer connected to the Internet, you will be taken to the Brother Solutions Center. Use the Brother Solutions Center to check for the latest software downloads and FAQs.

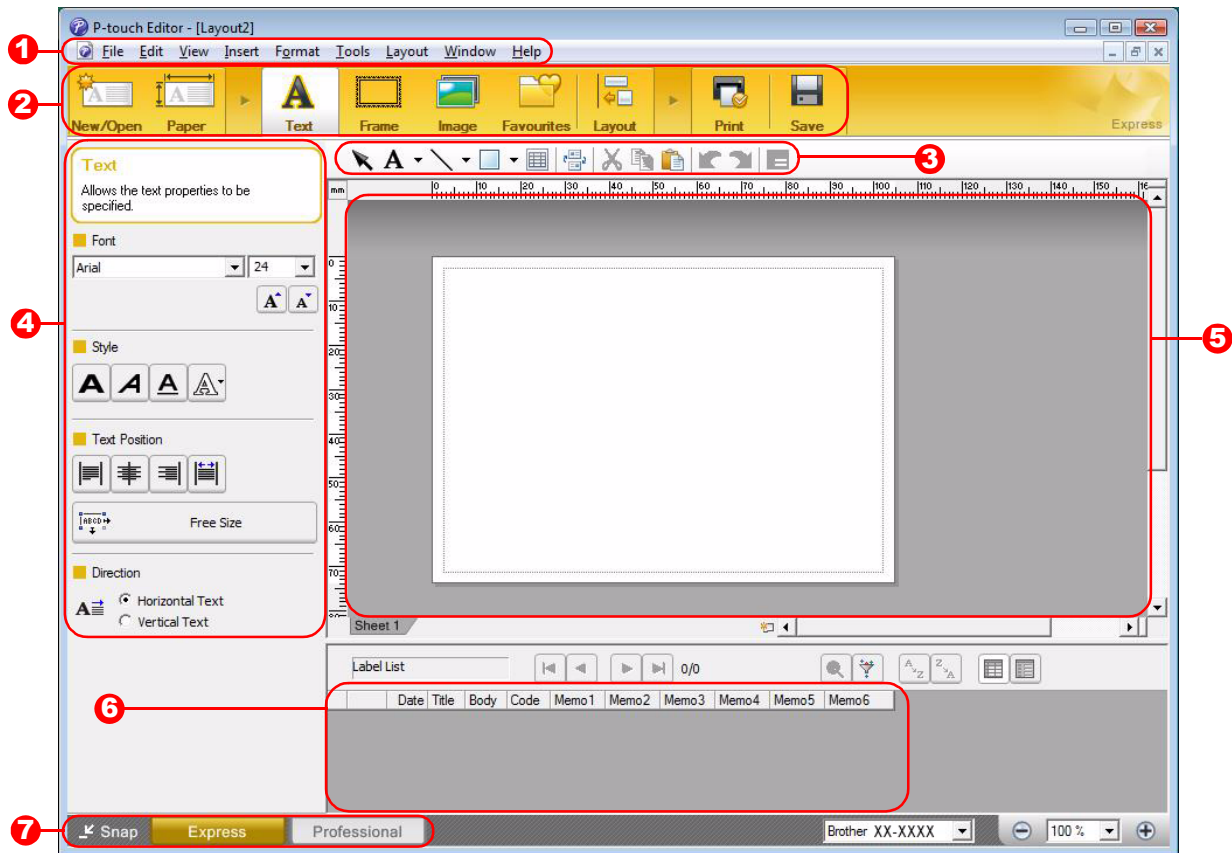


## Layout window

### ■ Express Mode

This mode provides easy design creation with text and images.

The layout window consists of the following sections:



#### 1 Menu bar

Commands are categorized under each menu (File, Edit, View, and Insert, etc.) by function.

#### 2 Command bar

The command bar contains New/Open, Paper, Text, Frame, Image, etc.

#### 3 Draw/Edit toolbar

Provides tools for choosing an object, entering text, drawing graphics, etc.

#### 4 Property bar

You can easily insert and format text, images, etc.

#### 5 Layout window

The layout window is used to display and edit objects.

#### 6 Database window

Displays a connected database.

#### 7 Mode selection buttons

Switch between the Editor's modes.

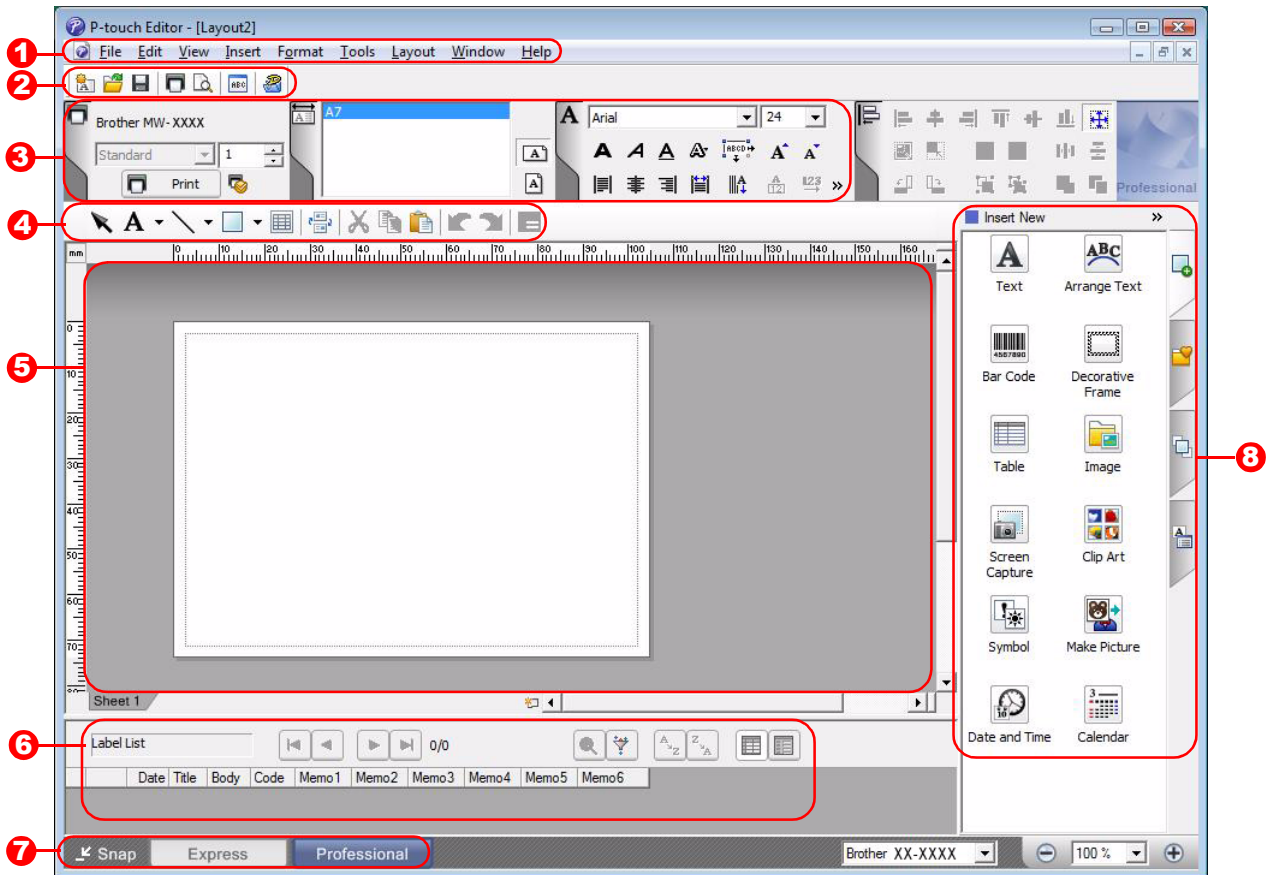


- The [View] menu allows you to show/hide the toolbars and windows.
- See the P-touch Editor Help for details.

## Professional Mode

This mode provides full-scale design creation.

The layout window consists of the following sections:



### 1 Menu bar

Commands are categorized under each menu (File, Edit, View, and Insert, etc.) by function.

### 2 Standard toolbar

A group of frequently used commands (New Layout, Open, Save, Print, etc.) are provided in this toolbar.

### 3 Property palette

The property palette contains the Print, Paper, Text, and Layout property boxes. Click on the left side of each palette to show/hide the box.

### 4 Draw/Edit toolbar

Provides tools for choosing an object, entering text, drawing graphics, etc.

### 5 Layout window

The layout window is used to display and edit objects.

### 6 Database window

Displays a connected database.

### 7 Mode selection buttons

Switch between the Editor's modes.

### 8 Side bar

By selecting the tab, you can easily insert and format text, bar codes, tables, etc., change the order of the objects to create a template, or change the advanced settings.



- The [View] menu allows you to show/hide the toolbars, palettes, and windows.
- See the P-touch Editor Help for details.

## ■ Snap Mode

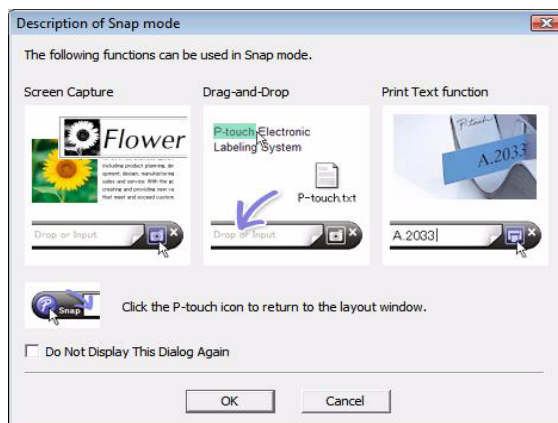
With this mode, you can capture the screen, print it as an image, and save it for future use. To start Snap mode, follow the steps below.

### 1 When you select [Snap] from the mode selection buttons, the Snap mode description dialog box appears. Click

OK.



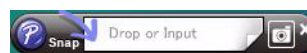
- If you put a checkmark in [Do Not Display This Dialog Again], you can go to Snap mode directly from next time.
- You can also start from [Start]-[All Programs (Programs)]-[Brother P-touch]-[P-touch Editor 5.0 (Snap mode)].



### 2 Snap mode appears.



See the P-touch Editor Help for details.



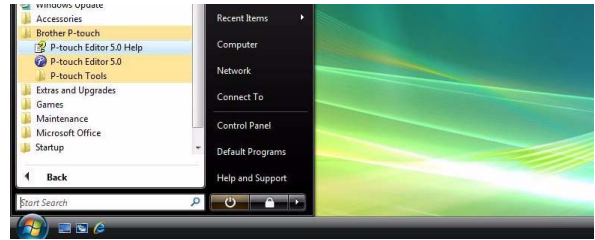


## ▶ Start P-touch Editor Help

This section explains how to start P-touch Editor Help for Windows®. The following is the example for Windows Vista®.

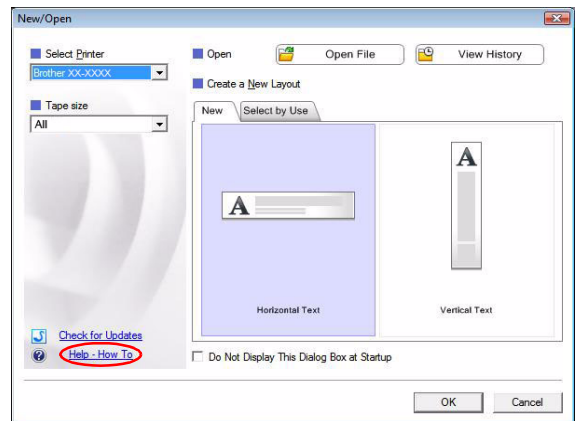
### ■ Start from Start button

To start P-touch Editor Help, click the Start button on the task bar, point to [All Programs] (or Programs)]. Click [Brother P-touch] and [P-touch Editor 5.0 Help].



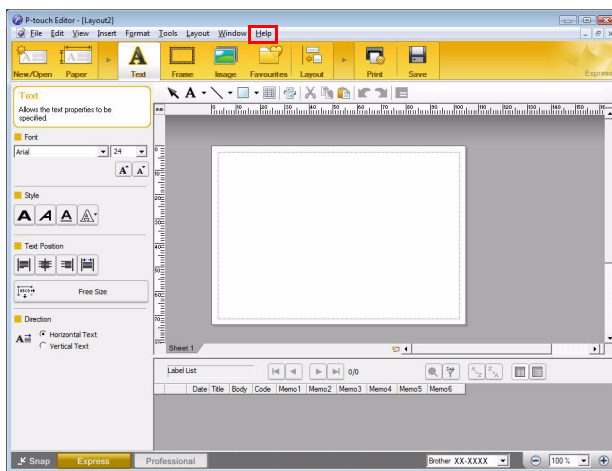
### ■ Start from [New/Open] dialog

When you start the P-touch Editor 5.0 and the [New/Open] dialog box appears, click **Help-How To**.

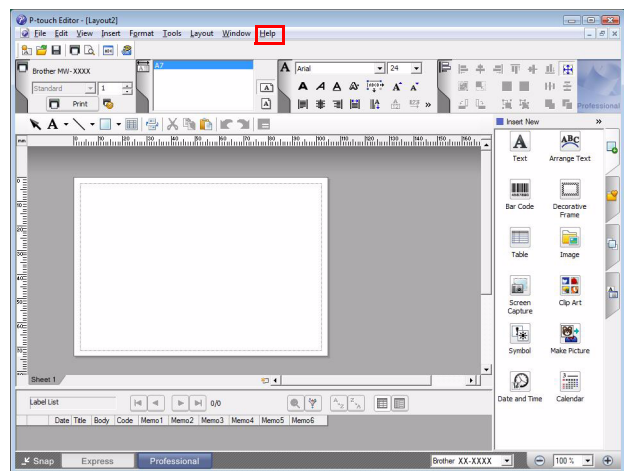


### ■ Start from P-touch Editor

Click Help menu and choose P-touch Editor Help.

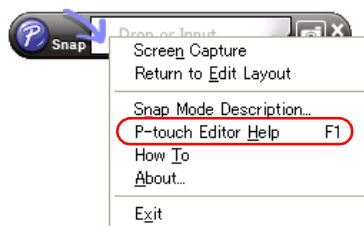


Express Mode



Professional Mode

Right click the mouse and choose P-touch Editor Help.



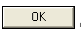
Snap Mode

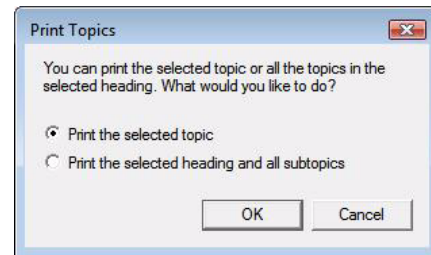
## ● Printing the Help description

The information given in P-touch Editor Help can be printed. Use your normal printer to print the P-touch Editor Help information.


**1** In the [Contents] tab, choose any topic you want to print.

**2** Click  on the Toolbar.

**3** Choose the range of topics to be printed, and click .



**4** Specify the [Printer] and click .

 Choose a normal printer that supports general paper sizes, such as A4.

# How to use Brother Mobile Printing Software (Brother MPrint)










## ▶ Printing

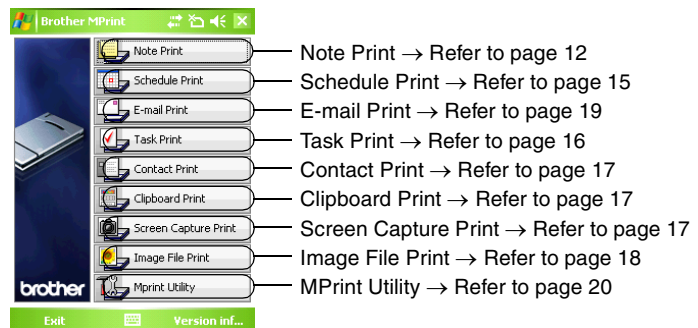
This printer has eight different printing functions.

### 1 Select on the [Program] screen.







The [Brother MPrint] screen appears.

#### ■ Windows Mobile® 5.0 / 6 Professional / 6 Classic

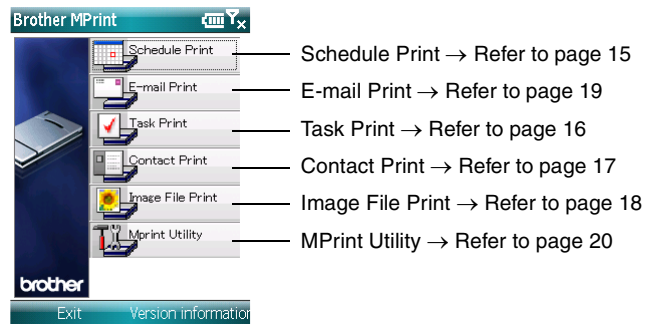
2 Check that , , , , , , ,  and  appear on the screen.



#### ■ Windows Mobile® 6 Standard

2 Check that , , , ,  and  appear on the screen.

- Note Print, Clipboard Print and Screen Capture Print is not available with Windows Mobile® 6 Standard.



## Note Print

Memos saved with Notes can be printed.

### 1 Select on the [Brother MPrint] screen.

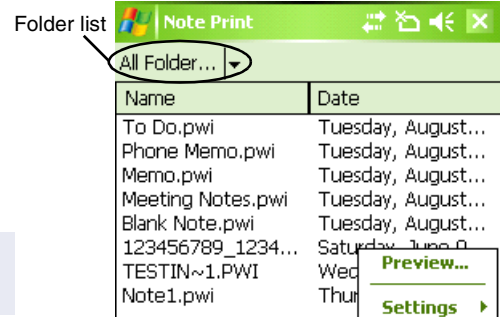
A list of memos appears in the [Note Print] screen.

### 2 Select the memo that you wish to print. Only one memo can be selected.

The selected memo is highlighted.



To display the memos in each previously categorized folder, select the folder list.

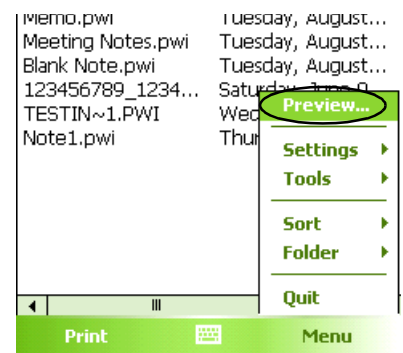


### 3 Select [Preview] in the Printer menu.

The [Print preview] screen appears.



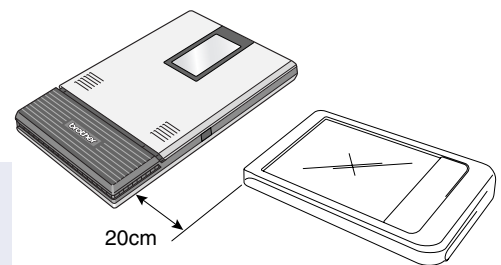
If [Print] was selected, printing will begin without the [Print preview] screen being displayed.



### 4 Position the printer and the device running Windows Mobile® so that their IrDA infrared ports are facing each other less than 20 cm apart (MW-120/260 only).



- Make sure that the printer is turned on.
- The IrDA infrared port is in the middle on the right side of the printer (MW-120/260 only)
- Step 4 is not necessary when communicating with Bluetooth.

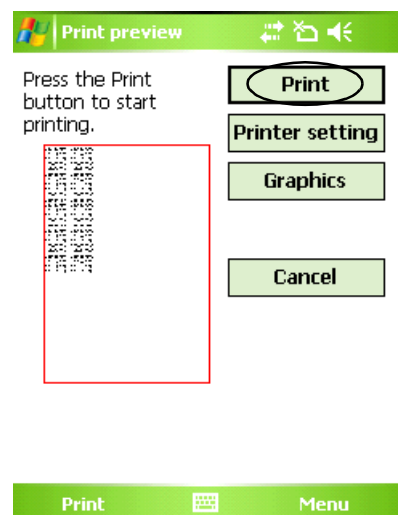


### 5 Select the Print button.

After the Windows Mobile® device detects the printer, printing begins.



- The printed layout may differ depending on the size of paper selected with [Printer setting].
- The [Print preview] screen allows you to view an image of the data as it will be printed. Text may be difficult to read.
- The first time you use Bluetooth communication, select a COM port for the printer, as shown on the next page.



## Advanced settings

Precise print settings can be specified.

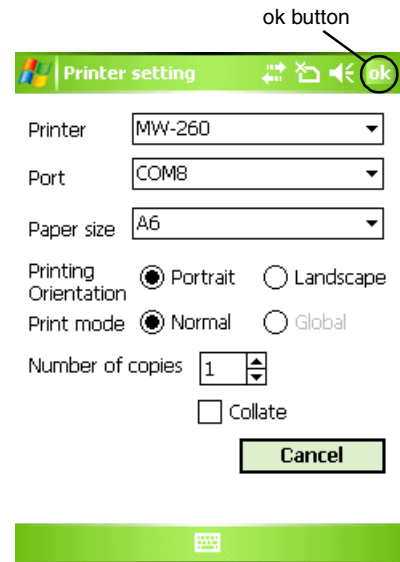
### Printer settings

#### 1 Select [Printer setting] in the [Print preview] screen.

The [Printer setting] screen appears.

#### 2 The following settings can be specified.

- Printer:  
Select the printer model which you are using.
- Port:  
Specify the settings depending on the COM port where the Bluetooth connection was established.  
(For details, refer to the User's Guide.)
- Paper size:  
Select the paper size which you want to use.  
The setting is adjusted according to the paper cassette that is loaded into the printer.
- Printing orientation: Portrait/Landscape
- Print mode: Normal/Global
- Number of copies: 1 through 50/Collate



#### 3 Select **ok**.

The printer settings are applied.

### Graphics-processing settings

#### 1 Select Graphics in the [Print preview] screen.

The [Graphics process setting] screen appears.

#### 2 The following settings can be specified.

- Half-tone:  
Dithering/Error Diffusion/None
- Image processing:  
Full-size printing/Fit to paper



#### 3 Select **ok**.

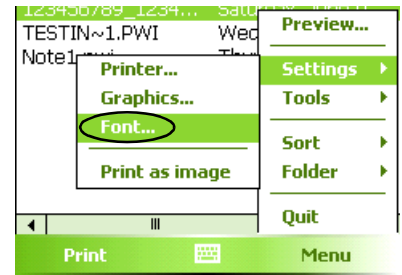
The graphics-processing settings are applied.

## ■ Text format settings

The font and size of the printed text can be changed.

### 1 Tap [Font] in the Settings menu of the [Note Print] screen.

The [Font setting] screen appears.



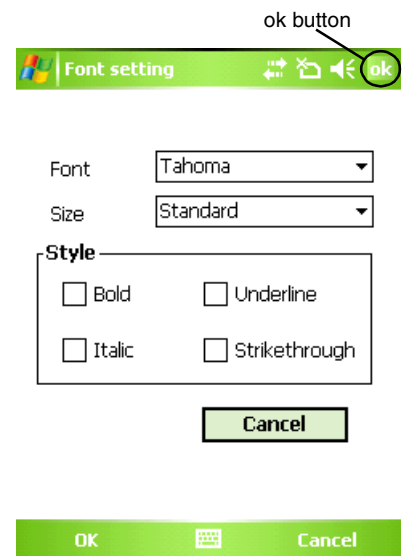
### 2 The following text settings can be specified.

- Font name:  
Tahoma/Courier New/Frutiger Linotype/Bookdings



The fonts that can be used differ depending on the device.

- Size:  
Largest/Larger/Standard/Smaller/Smallest
- Effects:  
Bold/Underline/Italic/Strikethrough



### 3 Select **ok**.

The text format settings are applied.

## Schedule Print

Schedules saved with Calendar can be printed.

### 1 Select on the [Brother MPrint] screen.

A list of schedules appears in the [Schedule Print] screen.

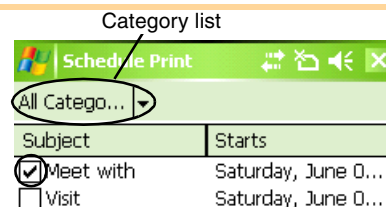
### 2 Select the box to the left of the schedule that you wish to print.

- More than one schedule can be selected.

The selected file is indicated by a check mark.



- The period of time to be printed can be specified. (→ “Printing a specified date” on page 16)
- To display the schedules in each previously specified category, tap [Filter] in the menu.



### 3 Select [Preview] in the Printer menu.

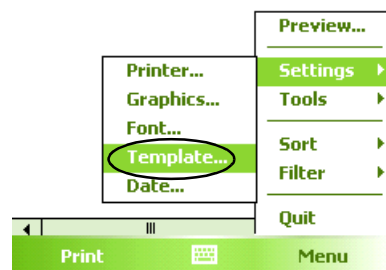
The procedure continues in the same way as with the Note Print (→ page 12).

#### ■ Template setting

The layout in which data is printed can be specified.

### 1 Select [Template] in the Settings menu of the [Schedule Print] screen.

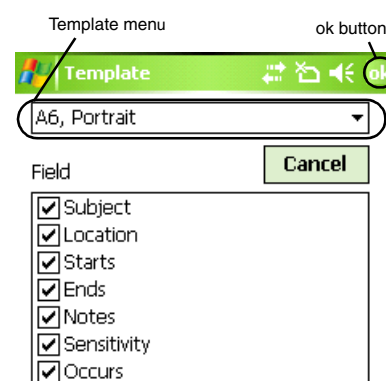
The [Template] screen appears.



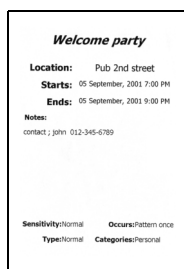
### 2 Select the template that you wish to use.

### 3 Select .

The selected template is applied.



### Example of an A6 portrait template



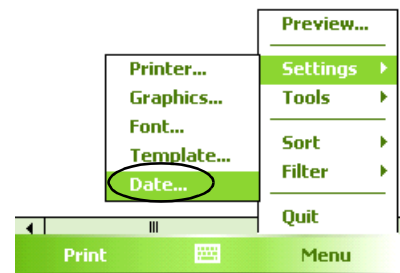
Various templates are available for A7-size paper.

## ■ Printing a specified date

The period of time to be printed can be specified.

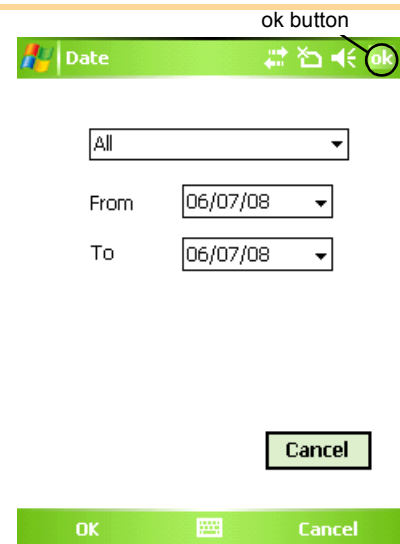
### 1 Select [Date] in the Settings menu of the [Schedule Print] screen.

The [Date] screen appears.



### 2 Change the date setting.

- Start date/End date/In progress
- Date



### 3 Select **ok**.

The schedules included in the specified time period are displayed in the [Schedule Print] screen.

## ● Task Print

Tasks and appointments saved with Tasks can be printed.

### 1 Select Task Print on the [Brother MPrint] screen.

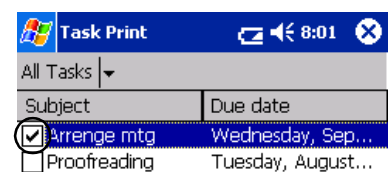
A list of tasks appears in the [Task Print] screen.

### 2 Select the box to the left of the task that you wish to print. More than one task can be selected.

A check mark appears.



- The period of time to be printed can be specified. (→ “Printing a specified date” on page 16)
- The layout in which data is printed can be specified. (→ “Template setting” on page 15)



The procedure continues in the same way as with the Note Print (→ page 12).



## Contact Print

Names, address and telephone numbers saved with Contacts can be printed.

### 1 Select Contact Print on the [Brother MPrint] screen.

A list of contacts appears in the [Contact Print] screen.

### 2 Select the box to the left of the contact that you wish to print. More than one name can be selected.

A check mark appears.



The layout in which data is printed can be specified.  
(→ "Template setting" on page 15)

The procedure continues in the same way as with the Note Print (→ page 12).

## Clipboard Print

The images and text moved to the Clipboard can be printed.



The Clipboard is the name of the location where data that was cut or copied is stored.

### 1 Select Clipboard Print on the [Brother MPrint] screen.

The contents of the Clipboard appear in the [Clipboard Print] screen.

The procedure continues in the same way as with the Note Print (→ page 12).

## Screen Capture Print

The currently displayed screen of the Pocket PC can be printed.

### 1 Select Screen Capture Print on the [Brother MPrint] screen.

A toolbar appears in the upper-right corner of the screen.

### 2 Display the screen that you wish to print.

### 3 Select on the toolbar.

The captured screen appears in the [Print preview] screen.

The procedure continues in the same way as with the Note Print  
(→ page 12).



## ■ Screen capture print settings



The time until the data is imported and the size of the captured area can be specified.

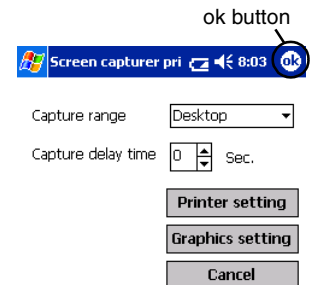
### 1 Select on the toolbar.

The [Screen capture print settings] screen appears.



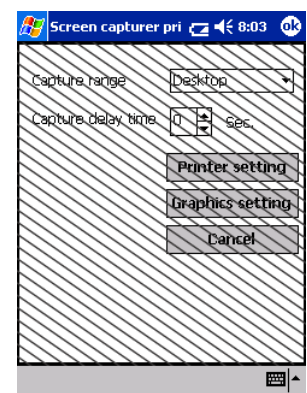
### 2 The following settings can be specified.

- Capture delay time:  
0 to 10 seconds  
Specifies the length of time until the image is imported after  is selected.
- Capture range:  
Selection range (Use the stylus to select the desired area.)/Client (Area indicated by  in the illustration at the right)/Desktop (Entire screen)



### 3 Select .

The screen capture settings are applied.



## ● Image File Print

Saved image files (in BMP, JPEG or PNG format) can be printed.

### 1 Select Image File Print on the [Brother MPrint] screen.

The [Image File Print] screen appears.

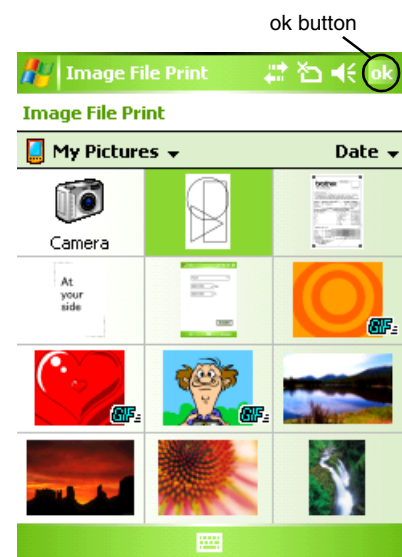
### 2 Tap the image file that you wish to print. Only one file can be selected.

The selected file is highlighted.

### 3 Select .

The [Print preview] screen appears.

The procedure continues in the same way as with the Note Print (→ page 12).



## ● E-mail Print

Saved e-mails can be printed.

---

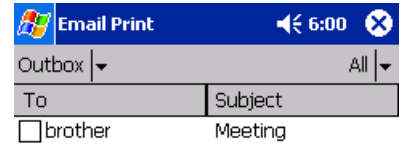
### 1 Select on the [Brother MPrint] screen.

A list of e-mails appears in the [Email Print] screen.

---

### 2 Select the e-mail that you wish to print. Only one e-mail can be selected.

The selected e-mail is highlighted.



The layout in which data is printed can be specified.  
(→ "Template setting" on page 15)

The procedure continues in the same way as with the Note Print (→ page 12).

# Changing Printer Settings

The following settings for this printer can be specified through the printer driver on a Windows® PC, or using the MPrint Utility on a Windows Mobile® device.

- Auto power-off time
- Print command setting (default)
- Auto sleep time
- Auto sleep/power-off time
- Power-saving setting
- Device name
- Pass key (PIN code)
- Communications Security Settings


## ▶ Changing the settings

### ■ Windows® PC:

---

**1** Click the [Start] button, and then click [Printers and Faxes].

---

**2** Right-click  Brother MW-145BT .  
A menu appears.

---

**3** Select [Properties].

---

**4** Click [Device Settings] tab and click Properties button on [Utility...].  
The [Brother MW-XXX Utility] screen appears.

---

**5** Change the settings referring to "Setting Items" on pages 21 to 22.


---

**6** Click [Close] button to complete the setting changes.  
The [Brother MW-XXX Utility] screen will close.

---

### ■ Windows Mobile® device:


---

**1** Select  MPrint Utility on the [Brother MPrint] screen.  
The [Brother MPrint Utility] screen appears.

---

**2** Change the settings referring to "Setting Items" on pages 21 to 22.

---

**3** Select the  button to complete the setting changes.  
The MPrint Utility will close.

---

The screens may vary depending on the model. The following is the example for the MPrint Utility on a Windows Mobile® device.

## ● Setting Items

### ■ General

#### ① Auto power-off time

The length of time [auto power-off time] until the printer automatically powers off can be specified. If "0" is specified, the printer will not automatically power off.



The available parameters differ depending on the printer model being used.

#### ② Print command setting (default)

You can select the default print setting, from 3 options, "ESC/P", "Raster" and "P-touch Template". You should not need to change this setting. "ESC/P" is selected by default, although "Raster" will be automatically chosen by the Brother mobile printing software when appropriate.

### ■ Bluetooth (1)

#### ③ Auto sleep time

When the Bluetooth switch is set to ON, the length of time [auto sleep time] until the printer automatically enters the sleep mode can be specified.

#### ④ Auto sleep/power-off time

When the Bluetooth switch is set to ON, the length of time [auto sleep/power-off time] until the printer powers off after entering the sleep mode can be specified. If "0" is specified for the auto sleep time, the unit will not enter the sleep mode.

#### ⑤ Power-saving setting

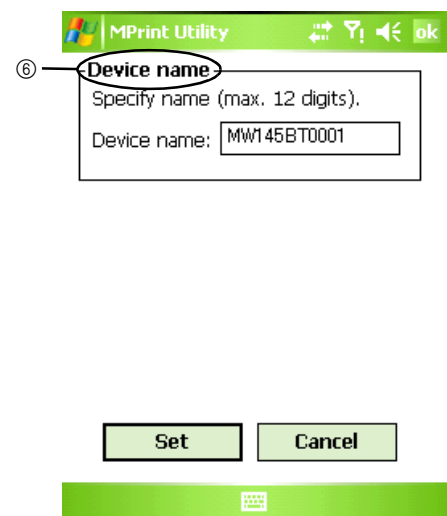
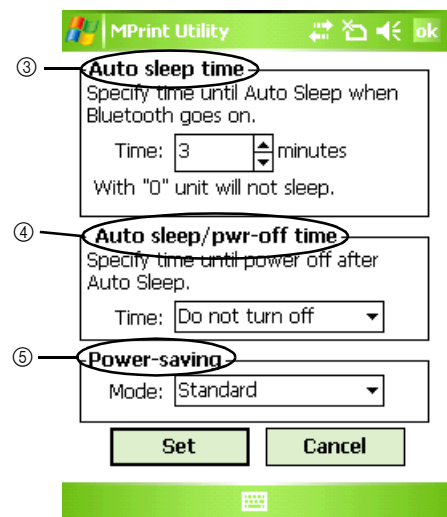
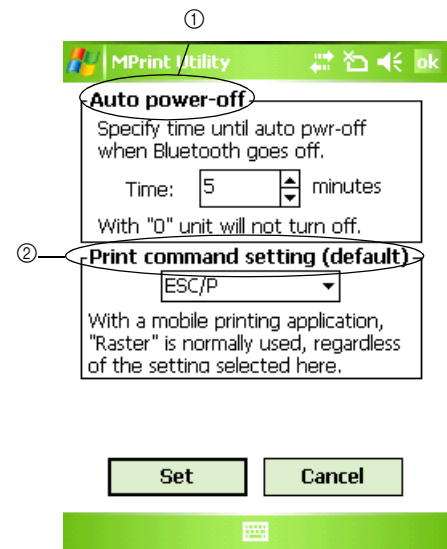
The power-saving setting can be specified.

### ■ Bluetooth (2)

#### ⑥ Device name

The device name can be changed.

Specify a name that contains 1-12 alphanumeric characters.



## ■ Bluetooth (3)

### ⑦ Communications Security Settings

Select required communications security settings.

Specify a four to sixteen digit alphanumeric code only if "PIN code: Enable" has been selected.

Select whether or not to enable Secure Simple Pairing.

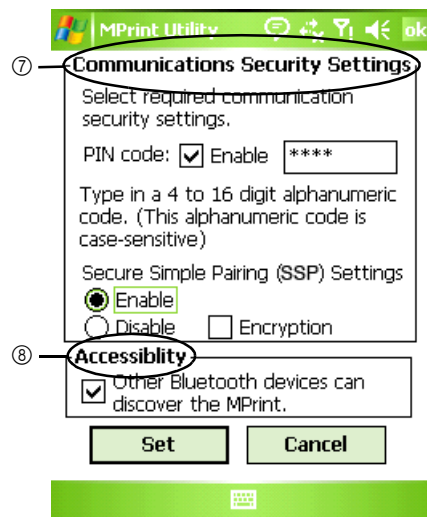


Secure Simple Pairing (SSP) is a feature for establishing a connection via Bluetooth ver. 2.1 without entering a PIN code. Between SSP-compatible devices, it is not necessary to enter the PIN code for establishing a connection with a Bluetooth device. However, security is not particularly high since there are no limitations on compatible devices establishing a connection. To prohibit printing by others, select "Disable". In addition, devices incompatible with SSP or where SSP is disabled will require pairing with PIN codes specified and encryption enabled.

### ⑧ Accessibility

Select whether or not to search from another device.

Select this setting from the computer when the printer cannot be found.



## Printing directly from other applications

You can use this machine to print directly from most Windows® applications, by installing the printer driver.

### ▶ Setting the Printer Driver

In the following steps, you will see XX-XXXX. Read "XX-XXXX" as your printer name. The printer names in the following screens may differ from your printer name.

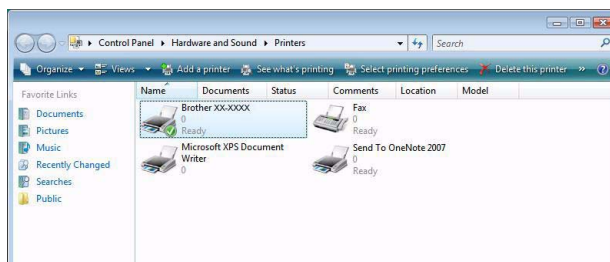
The screens may vary depending on the model. The following is the example for Windows Vista®.

- 1 ■ For Windows Vista®  
From [Control Panel], go to [Hardware and Sound] and open [Printers].  
■ For Windows® 2000/XP  
From [Control Panel], go to [Printers (2000) / Printers and Faxes (XP)].



For details, see Windows® Help.

- 2 ■ For Windows Vista®  
Choose "Brother XX-XXXX", and click [Select printing preferences].  
The [Brother XX-XXX printing preferences] dialog box appears.

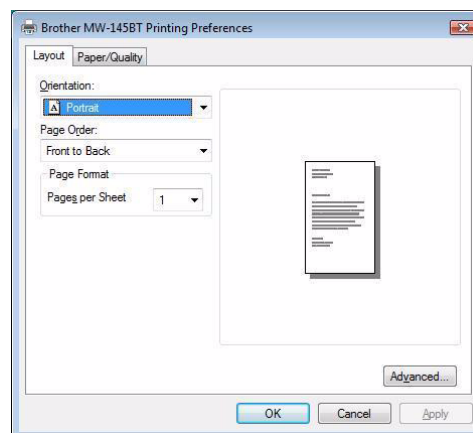


- For Windows® 2000/XP  
Choose "Brother XX-XXXX", and click [File] - [Printing Preferences].  
The [Printer Properties] dialog box appears.

- 3 Choose each item and click  .

- [Layout] Tab  
This tab is used to set the Format and Width.

You can change the paper orientation and page order.



- 4 Close the [Printers] window.

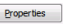
## ▶ Printing from other applications

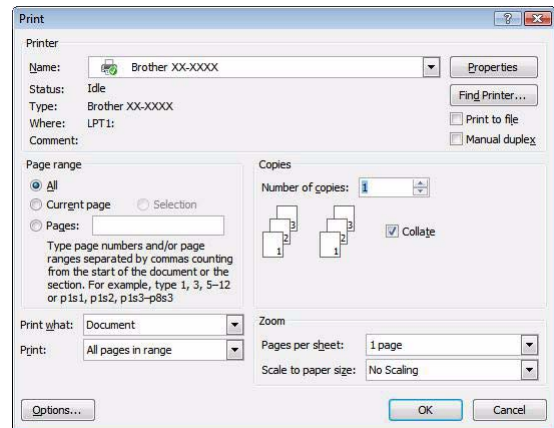
We will use Microsoft® Word 2007 as an example.

### 1 Click and .

The [Print] dialog box appears.

### 2 Choose "Brother XX-XXXX".

You can change the settings of the Printer Driver from the [Properties] dialog box which appears by clicking .



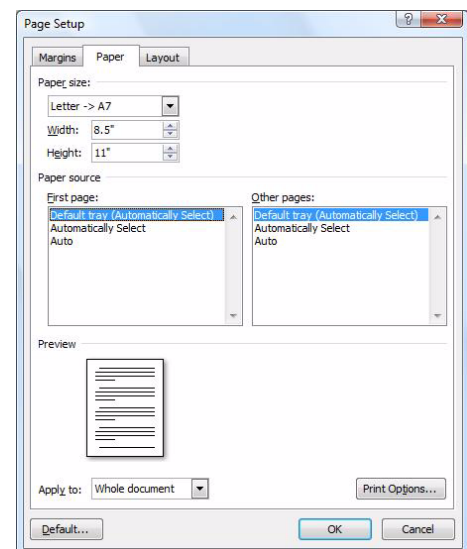
### 3 Click to close the [Print] dialog box.

### 4 When you click [Page Layout] the ribbon appears. Then click the mark to the right of Page Setup.

The [Page Setup] dialog box appears.

### 5 Click the [Paper] tab, and choose the paper size that you want to print.

Set page margins and layout in the [Margins] and [Layout] tab as well.



### 6 Click .

The size of the Microsoft® Word window is adjusted to the paper size that you have just chosen. Edit the document as needed.

### 7 Click and , then click .

The specified designs are printed.



**brother**®