

brother®

QL-580N
QL-1060N



Software installation guide

English Windows
Mac

LB9161001

Introduction

■ Features

P-touch Editor	Makes it easy for anyone to create a wide variety of custom labels in complex layouts by using fonts, templates, and clip art.
Printer Driver	Lets you print labels from the connected Brother label printer when using P-touch Editor on your PC.
P-touch Address Book (Windows® Only)	The P-touch Address Book is a software program for creating a computer based address book and printing durable pre-sized labels. With this easy-to-use software, address labels and visitor name badges can quickly be created. Data from other applications (CSV files or Microsoft Outlook contact data) can also be imported. A predefined set of label layout styles are available. Additionally users may create their own layouts.

■ CD-ROM Precautions

- Do not scratch the CD-ROM.
- Do not subject the CD-ROM to extremely high or extremely low temperatures.
- Do not put heavy objects on the CD-ROM or apply force to the CD-ROM.
- The software contained on the CD-ROM is meant for use with your purchased machine only. It may be installed on multiple PCs for use at an office, etc.
- **Do not connect the USB cable to your PC until the software has been installed and you are instructed to connect.**

System Requirements

■ Operating environment

Before installation, check that your system configuration meets the following requirements.

Operating System (OS)	Windows®*1	Windows® XP/Windows Vista®/Windows® 7/ Windows Server® 2003/2008/2008 R2
	Macintosh®	Mac OS® X 10.3.9 - 10.6
Hard Disk	Windows®*1	Disk space 70 MB or more*2
	Macintosh®	Disk space 100 MB or more*2
Interface	Windows®*1	RS-232C*3, USB port (USB Spec. 1.1 or 2.0 protocol), 10/100 BASE-TX Wired Ethernet
	Macintosh®	USB port (USB Spec. 1.1 or 2.0 protocol), 10/100 BASE-TX Wired Ethernet
Other	CD-ROM drive	

*1 The computer should meet the Microsoft® recommendations for the OS.

*2 Required available space when installing the software with all of the options.

*3 The RS-232C interface is required when printing with ESC/P commands.



- Microsoft, Windows Vista, Windows Server and Windows are either registered trademarks or trademarks of Microsoft Corp. in the United States and/or other countries.
- Apple, Macintosh and Mac OS are trademarks of Apple Inc., registered in the United States and other countries.
- The names of other software or products used in this document are trademarks or registered trademarks of the respective companies that developed them.


1 Installing the Software

The printer names in the following screens may differ from your printer name. The procedure for installing them varies depending on the OS of the computer. The installation procedure is subject to change without notice.

⚠ Do not connect the printer to the computer until directed to do so.

1. When using Microsoft® Windows®

This section explains how to install P-touch Editor 5.0, P-touch Address Book 1.1, the Printer Driver, Software User's Guide (PDF), and Network User's Guide (PDF) as a whole. The following is the example for Windows Vista®.

- 1** Start the computer and put the CD-ROM into the CD-ROM drive.
 If it does not start up automatically, open the files on the CD-ROM and double click on "Setup.exe".

- 2** Click "Standard Installation".

 Installation items:

- ① Standard Installation**

P-touch Editor 5.0,
P-touch Address Book 1.1,
Printer Driver, Software User's
Guide (PDF), and Network User's
Guide (PDF).

- ② Custom Installation**

P-touch Editor 5.0,
P-touch Address Book 1.1,
Printer Driver, Software User's Guide (PDF), and Network User's Guide (PDF)
can all be installed separately.

- ③ Utility Installation**

BRAdmin Light.

- ④ User's Guide**

Software User's Guide (PDF), Network User's Guide (PDF), and link to the
download page for Adobe® Reader®.



- 3** Read the licence agreement and click [Yes] if you agree with the terms and conditions.

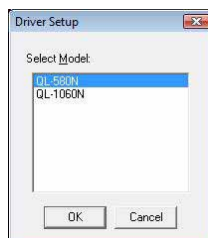
- 4** Follow the on-screen instructions.

- 5** Put a check mark in the box next to the Add-In programs you want to install, and click [Next].

! Make sure that all Microsoft® Office applications are closed.
 For details of the Add-in, see the "Software User's Guide (PDF)".

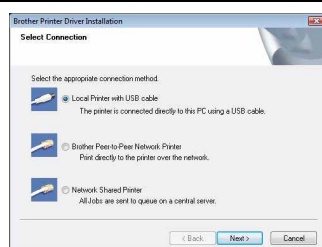


- 6** Select the desired model, and then click [OK]. Follow the on-screen instructions of the driver installation.



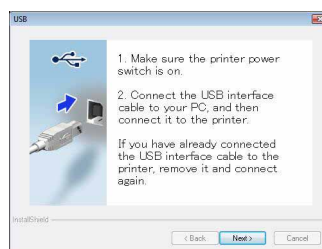
■For USB interface cable users

- 7-1** Choose Local Printer with USB cable and click [Next].




- 7-2** Follow the on-screen instructions. When this screen appears, make sure to turn on the power. Connect the USB interface cable to your computer, and then connect it to the machine.

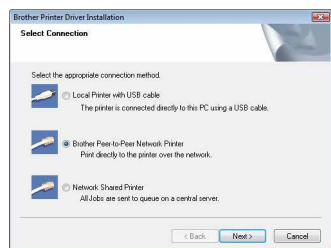
Now, go to step 8 on page 5.




■For Network interface cable users

7-1 Choose Brother Peer-to-Peer Network Printer, and then click [Next].

 Check that the machine is connected to the network by a LAN cable.



7-2 Choose Search the network for devices and choose from a list of discovered devices (Recommended). Or enter your machine's IP address or its node name. Click [Next].


 You can find your printer's IP address and the node name by printing out the Printer Settings Page, please refer to the Network User's Guide (PDF) for details.

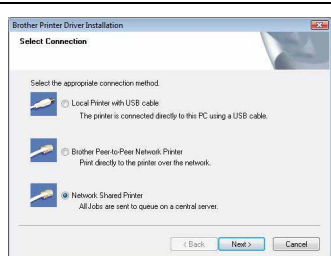
7-3 Choose your printer.

Now, go to step 8 on page 5.


■For shared network printer users

7-1 Choose Network Shared Printer, and then click [Next].

 Check that the machine is connected to the network by a LAN cable.



7-2 Choose your printer's queue, and then click [OK].

 Contact your administrator if you do not know the location or the name of the printer in the network.

8 Click [Next].

- If you choose "Yes, display the page", you will go to the online user registration page before finishing the installation. (recommended)
- If you choose "No, do not display the page", you will continue the installation.

9 Click [Finish].

10 Start the software.

- Click [Start] - [All Programs] - [Brother P-touch] - [P-touch Editor 5.0] to start P-touch Editor.
- Click [Start] - [All Programs] - [Brother P-touch] - [P-touch Address Book 1.1] to start P-touch Address Book.



For details on software, see → "Software User's Guide (PDF)".

You can find the User's Guide (PDF) by clicking [Start] - [All Programs] - [Brother P-touch] - [Manuals] - [QL-Series-N] - [Software User's Guide].

■ Installing the BRAdmin Light configuration utility for Windows

BRAdmin Light is a utility for the initial setup of Brother network connected devices. It can also search for Brother products on your network, view the status and configure basic network settings, such as IP address.

For more information on BRAdmin Light, visit us at <http://solutions.brother.com>

The following is the example for Windows Vista®.



- If you require more advanced printer management, use the latest Brother BRAdmin Professional utility version that is available as a download from <http://solutions.brother.com>
- If you are using personal firewall software (e.g. Windows Firewall), BRAdmin Light may fail to detect the unconfigured device. In that case, disable your personal firewall software, and try BRAdmin Light again. Re-start your personal firewall software after the address information is set.

1 Click "Utility Installation".



This screen is the same screen as you see when you insert the CD-ROM.



2 Click "BRAdmin Light" and follow the on-screen instructions.




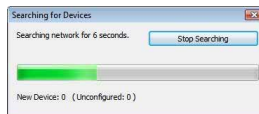
If Windows Firewall is enabled on your PC, the message "Do you wish to add this application to the list of exceptions?" appears. Check your PC environment and choose [Yes] or [No].




■ Setting your IP address, Subnet Mask and Gateway using BRAdmin Light

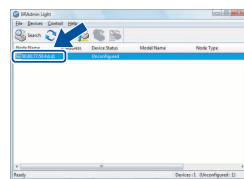
- 1** Click [Start] - [All Programs] - [Brother] - [BRAdmin Light]. BRAdmin Light will search for new devices automatically.

 If you have a DHCP/BOOTP/RARP server in your network, you don't have to do the following operation, as the print server will automatically obtain its IP address.

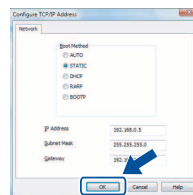


- 2** Double-click the unconfigured device.

 The default password is "access."



- 3** Choose STATIC for the Boot Method. Enter the IP Address, Subnet Mask and Gateway, and then click [OK].



- 4** The address information will be saved to the printer.

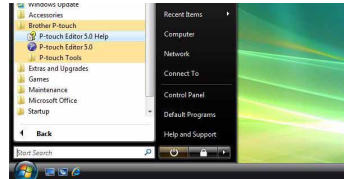
How to use the P-touch Editor Help (for Windows®)

Start P-touch Editor Help

The following is the example for Windows Vista®. The printer names in the following screens may differ from your printer name.

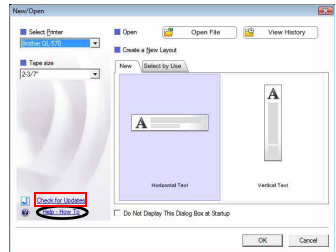
■ Start from Start () button

To start P-touch Editor Help, click the Start () button on the task bar, point to [All Programs]. Click [Brother P-touch] and [P-touch Editor 5.0 Help].



■ Start from New/Open dialog

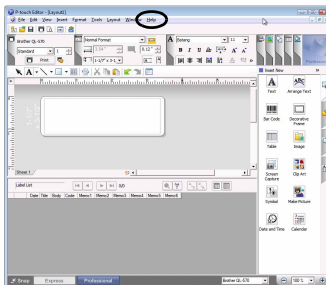
When you start the P-touch Editor 5.0 and the New/Open dialog box appears, click "Help - How To".



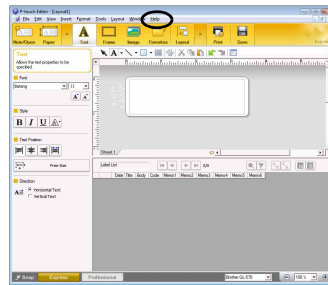
If you select "Check for Updates" from the checkbox shown on the right, you can check if there is an update available for P-touch Editor from the web site.

■ Start from P-touch Editor

Click the Help menu and choose P-touch Editor Help.



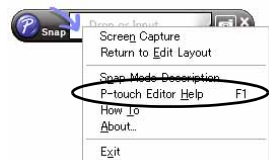
Professional Mode



Express Mode

■ Start from Snap mode

Right-click the mouse and choose P-touch Editor Help.



2. When using Mac OS®

This section explains how to install P-touch Editor 5.0, Fonts, Auto Format Templates, Clip Art, and the printer driver. After installing the Printer Driver, it also explains how to configure it for the machine.

- ❗ • Until the installation of printer driver is completed, do not connect the machine to your Macintosh®. If it has been connected to it, pull out the USB interface cable/ Network interface cable from your Macintosh®.
- ✍ • When installing the machine, log in as the administrator.

The following is the example for Mac OS® X 10.5.7. In the following steps, you will see QL-XXX. Read "XXX" as your printer name. The printer names in the following screens may differ from your purchased printer name.

- 1** Start up your Macintosh®, and insert the CD-ROM into the CD-ROM drive.

Double click the "QL_Series" (CD-ROM) icon.

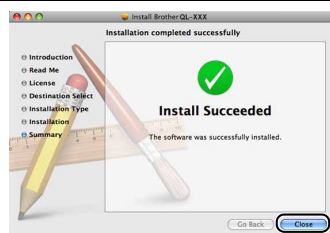


- 2** Click [Mac OS X] folder and double click [QL-XXX Driver.pkg]. Follow the on-screen instructions.



- 3** After the installation is completed and the screen shown right is displayed, click [Close].

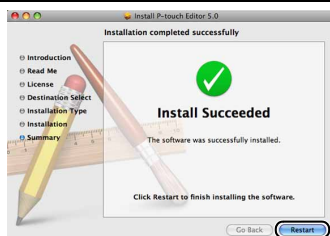
The installation of the printer driver is completed. Next, install P-touch Editor 5.0.



- 4** Double click [P-touch Editor 5.0 Installer.mpkg] in [Mac OS X] folder. The P-touch Editor 5.0 Installer starts up. Follow the on-screen instructions.


- 5** When the installation is completed and the message "Click Restart to finish installing the software." is displayed, click [Restart].

The Macintosh® is restarted.
The installation of software is completed.




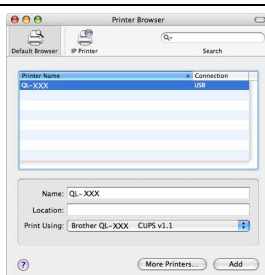
- 6** After restarting the computer, connect the USB/LAN cable to the machine.
- ! As the caution label is covering the USB port of the machine, remove it and then connect the USB cable.

- 7** Connect the USB/LAN cable to the USB/LAN port of the Macintosh®. Press the ON/OFF button (⏻) on the machine to turn on the power.
- ✎ When connecting the machine to the Macintosh® via a USB hub, it may not be connected correctly. At that time, connect the machine directly to the USB port of your Macintosh®.

- 8** (Mac OS® X 10.3.9 - 10.4.x) Double click the drive where Mac OS® X is installed, and click in order of [Applications] - [Utilities] - [Printer Setup Utility].
- (Mac OS® X 10.5.x - 10.6) Click in order of [Apple menu] - [System Preferences], and click "Print & Fax". Then click .

■For USB interface cable users

- 9** (Mac OS® X 10.3.9) Click [Add] and choose USB at the top of the screen. Choose QL-XXX from the list and click [Add] again to add the printer to the Printer Setup Utility.
- (Mac OS® X 10.4.x - 10.6) Click [Add]/.
- Choose QL-XXX from the list and click [Add] to add the printer to the Printer Setup Utility/Print & Fax.



✎ For Mac OS® X 10.4.x, click [Add] and add the printer with the BRPTUSB connection. (If you do so, an error dialog appears when an printing error occurs.) Set the appropriate printer name.

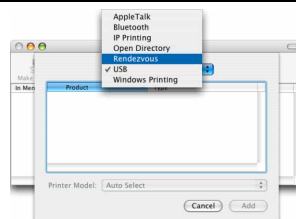
Now, go to step 10.

■For Network interface cable users (Simple Network Configuration)

9-1 Click [Add].

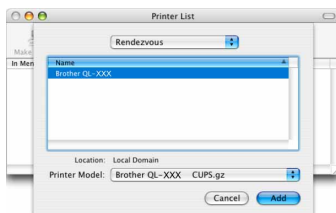
(Mac OS® X 10.3.9) Make the selection shown right.

(Mac OS® X 10.4.x - 10.6) Go to the next step.

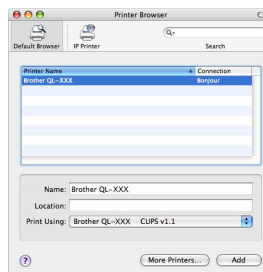


9-2 Choose QL-XXX from the list and click [Add] again to add the printer to the Printer Setup Utility.

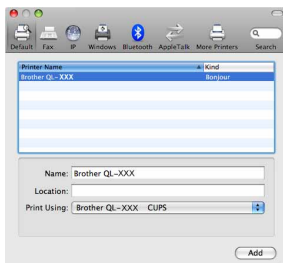
(Mac OS® X 10.3.9)



(Mac OS® X 10.4.x)



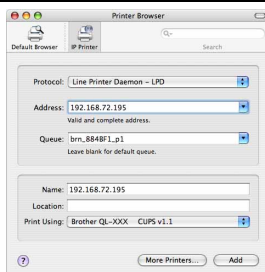
(Mac OS® X 10.5)




Now, go to step 10.

■For Network interface cable users (Manual Network Configuration)

9 (Mac OS® X 10.3.9) Click [Add] and choose IP Printing at the top of the screen. Enter the IP address of the printer into the Printer Address box. Choose QL-XXX from the list and click [Add] again to add the printer to the Printer Setup Utility.




(Mac OS® X 10.4.x - 10.6) Click [Add] and choose IP Printer / IP at the top of the screen. Enter the IP address of the printer into the Address box. Choose QL-XXX from the list and click [Add] again to add the printer to the Printer Setup Utility.

 When specifying the Queue Name, use the value BRNxxxxxxxxxxxx where xxxxxxxxxxxx is the Ethernet address.

10 When the screen returns to the Printer List / Print & Fax screen, check that "QL-XXX" is added, and close the Printer List / Print & Fax screen.


Now you can use the machine.

 For details on software, see the P-touch Editor Help.

■Installing the BRAdmin Light configuration utility for Mac®

BRAdmin Light is a utility for the initial setup of Brother network connected devices. It can also search for Brother products on your network, view the status and configure basic network settings, such as IP address.

For more information on BRAdmin Light, visit us at <http://solutions.brother.com>

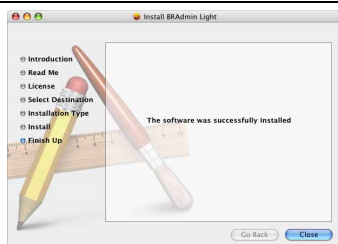
 If you are using personal firewall software, BRAdmin Light may fail to detect the unconfigured device. In that case, disable your personal firewall software, try BRAdmin Light again. Re-start your personal firewall software after the address information is set.

1 Double click "BRAdmin Light.pkg" in the [Mac OS X] folder.


The BRAdmin Light Installer starts up. Follow the on-screen instructions.




- 2** When the installation is completed and the message "The Software was successfully installed." is displayed, click [Close].
The installation of BRAdmin Light is completed.

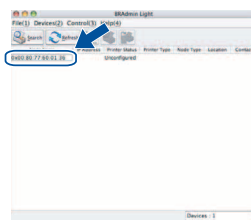


■Setting your IP Address, Subnet Mask and Gateway using BRAdmin Light

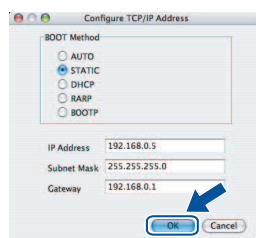
- 1** Click [Library] - [Printers] - [Brother] - [P-touch Utilities] - [BRAdmin Light.jar].
BRAdmin Light will search for new devices automatically.
 If you have a DHCP/BOOTP/RARP server in your network, you don't have to do the following operation, as the print server will automatically obtain its IP address.



- 2** Double-click the unconfigured device.
 The default password is "access."



- 3** Choose STATIC for the Boot Method. Enter the IP Address, Subnet Mask and Gateway, and then click [OK].



- 4** The address information will be saved to the printer.

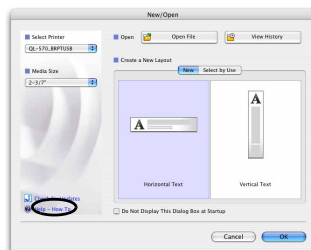
How to use the P-touch Editor Help (Mac OS®)

Start P-touch Editor Help

The following is the example for Mac OS® X 10.4.9. The printer names in the following screens may differ from your printer name.

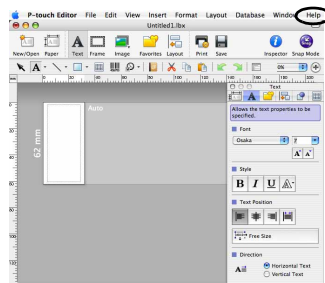
■ Start from New/Open dialog

In the New/Open dialog, click "Help - How To".



■ Start from P-touch Editor

To start the P-touch Editor Help, click the Help menu and choose "P-touch Editor Help".



1 Label Variety

Here are the sample labels that you can create with the Brother QL-570/580N. There is a variety of labels to choose from.

Choose the type of label you want to create.

Meeting Minutes Project Alpha

Mr Michael Smith
LBI Group
100, Clean View Ave.,
Oxford, Oxon. OX14 3RT

Visitor



Laura Johnson

DATE: 05/09/2008
TIME: 14:15



Family Trip

New York



JAZZ

TO:

Ms. Donna Lewis
LBI Corporation
100 Somerset Corp Blvd
Bridgewater, NJ 08807-0911

Mr Michael Smith
LBI Group
100, Clean View Ave.,
Oxford, Oxon. OX14 3RT



Mr Robert Goodman
15, Meadow Road,
Aberdeen AB8 3GR

NO SMOKING

M. Smith

DANGER!
 DANGER!

06/05/2008
No. 10023
M 34



Emergency Exit

Mr. Walter Freeman
4555 Cumberland Pkwy.
Dallas TX 95053



Department	Planning Dept.
Serial No.	0011154
Device No.	E6200-A4C



Best Hit Songs Jan. - Aug.

Best Hit Songs Jan. - Aug.



Laura Johnson

Information File 1

IP Address:

192.168. 1. 1

IP Address:

192.168. 1. 2



Mary



Pat



Chris



John



LB7468001

USB Cable
CB-001



111111-001

AC Adapter
AC-123



222222-001

2 General Procedures

This section describes the general procedure for creating labels.

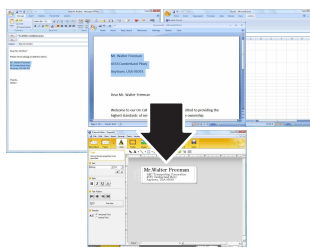
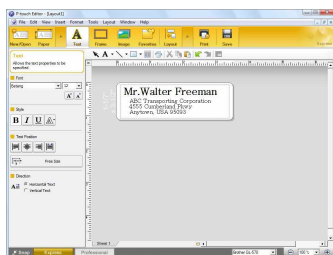
■ Connect to the PC

1 Create the label data.

Enter text directly using P-touch Editor, or copy text from a Microsoft® Office application.

Use P-touch Editor's variety of editing functions to format and decorate your label.

- Enter text in P-touch Editor.
- Copy text from Microsoft® Office.
(for Windows®)

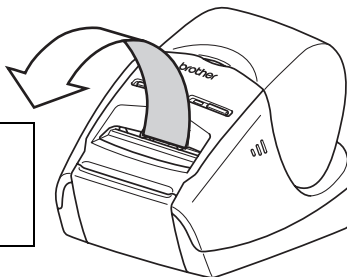


For details on how to create the labels, see the Help.

2 Print the label.

Print the label from the Brother QL printer.

Mr. Walter Freeman
ABC Transporting Corporation
4555 Cumberland Pkwy
Anytown, USA 95093



For details on how to print the labels, see the Help.

⚠ Remove labels from the label output slot to prevent paper jams.

■ Use the machine without connecting to the PC (QL-580N only)

1 Create the label data and transfer it to the printer. (See the P-touch Transfer Manager chapter of the Software User's Guide (PDF).)

2 Use the P-touch Template command to print the transferred template. (For details of the P-touch Template function, see the manuals in the CD-ROM.)

Introduction

STEP
1

Installing the Software

For Windows®

For Macintosh®

STEP
2

Label Overview

brother®